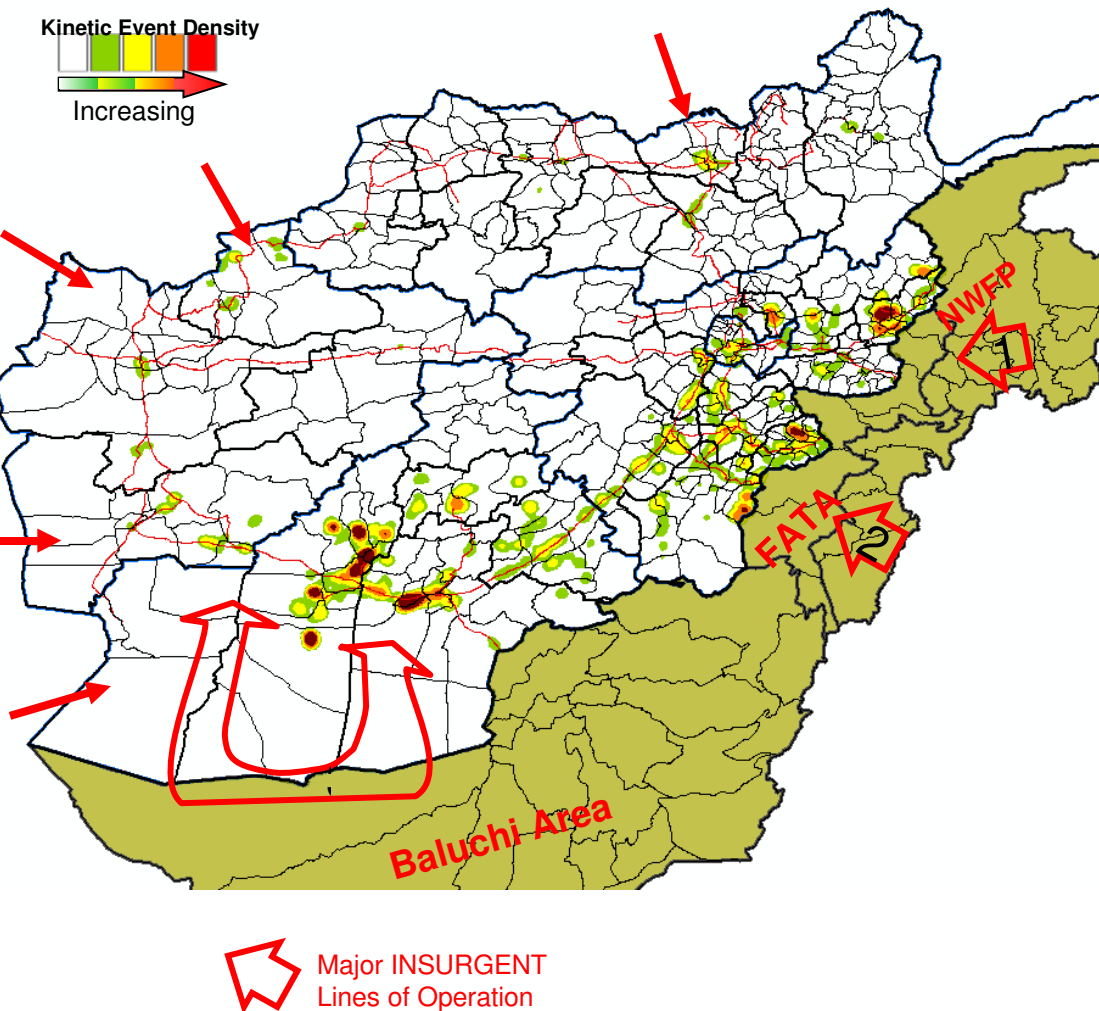





Metrics Brief 2007 - 2008



 Major INSURGENT Lines of Operation

2008

24% Afghans perceive improvement,
19% perceive worsening (Sep 08 poll)

70% of kinetic events continue to occur
in 10% of the districts

33% increase in Kinetic Events

IED events up 27%....single largest
cause of casualties

119% more attacks on GI/RoA
5% less Suicide Attacks
50% more Kidnappings/Assassinations

ISAF/OEF Deaths: up 35%
Civilian Deaths: up 40% - 46%*

Building Host Nation Capacity:
ANA: 13 more Kandak BNs formed
46 Kandaks capable of BN Ops

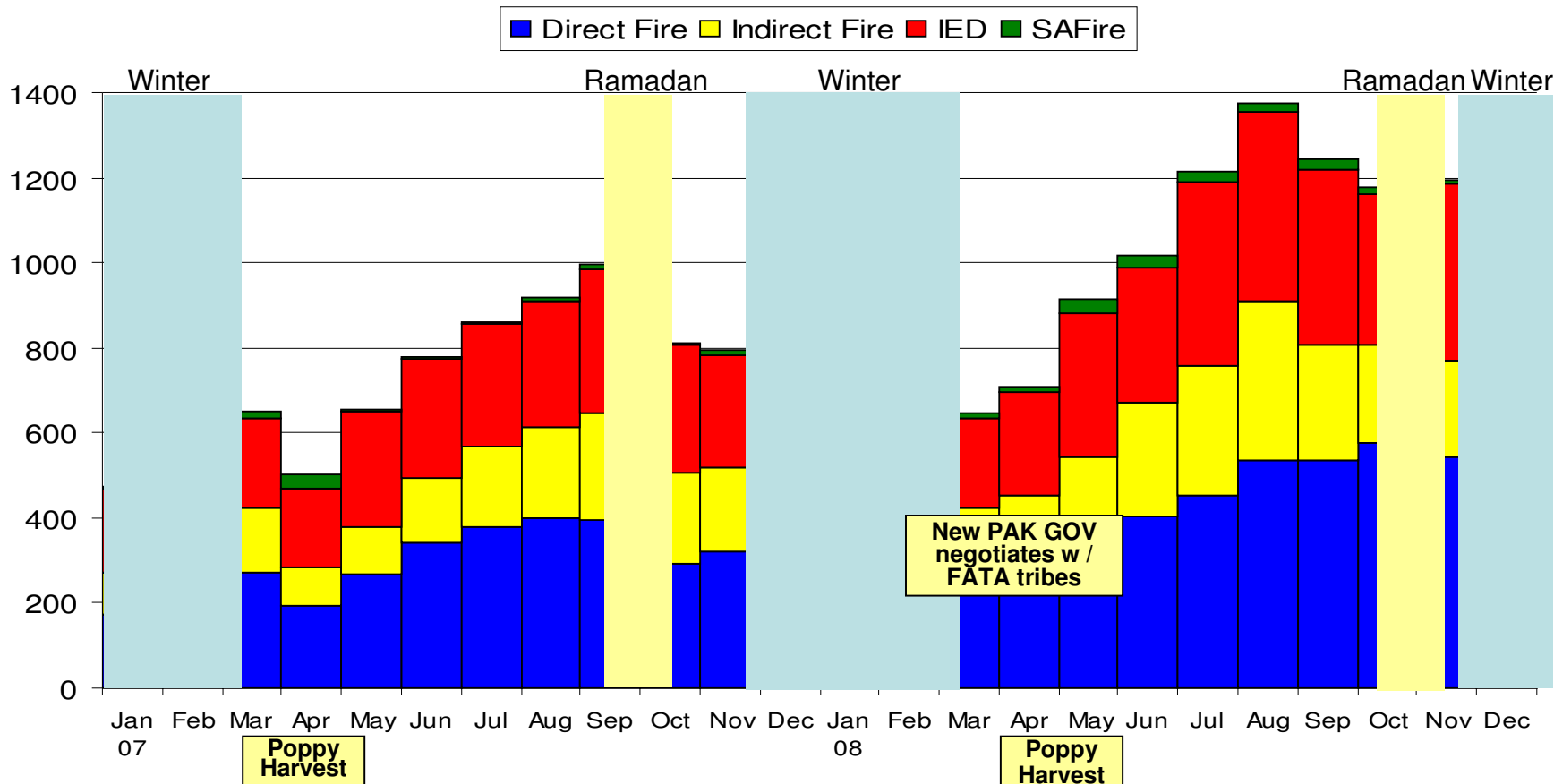
ANP: 52 districts undergoing FDD
13 of 20 Civil Order Police BNs
fielded

*Range based on UNAMA and ISAF/NATO data collection.2

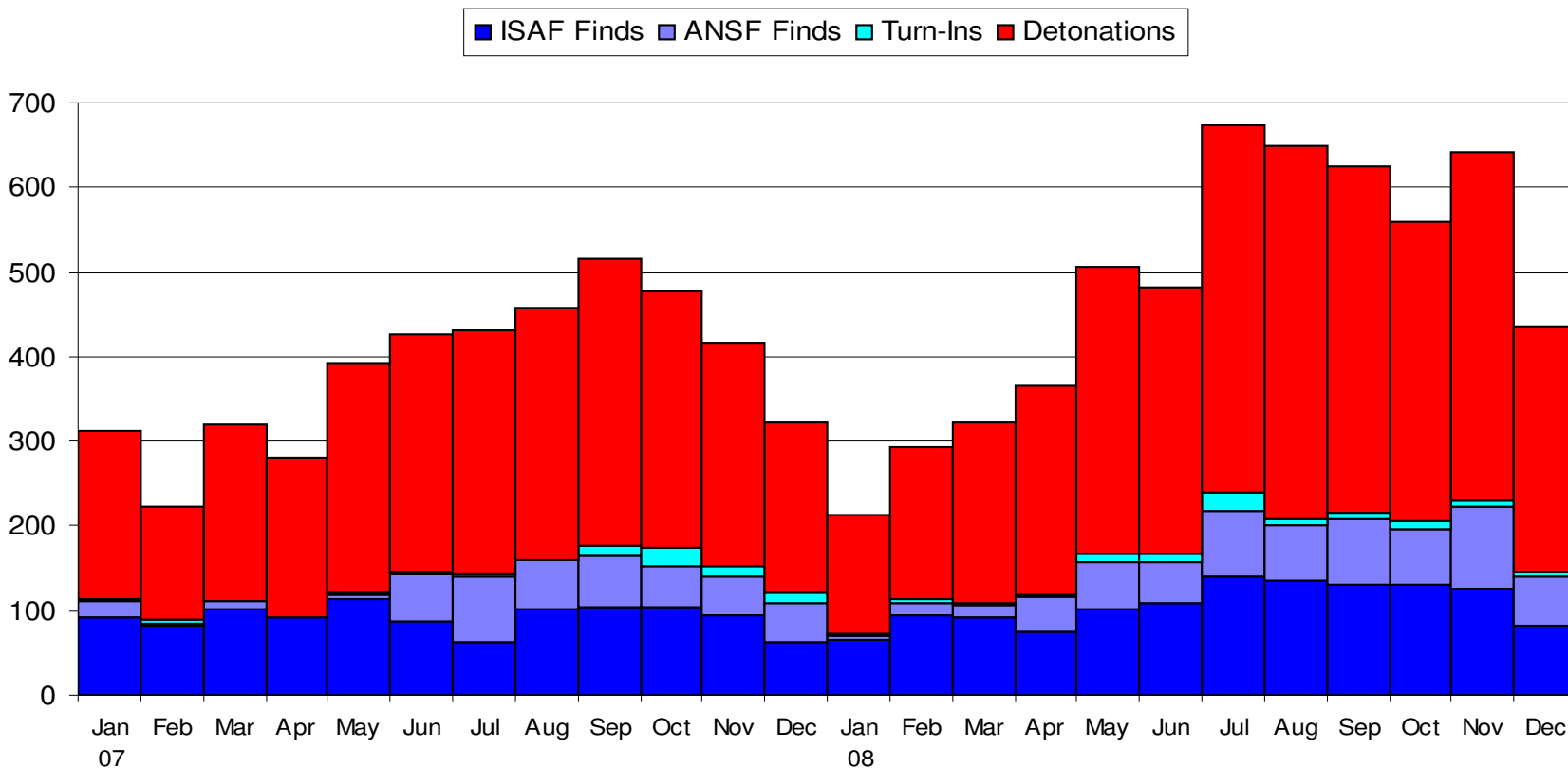
- INS attacks up 33% in 2008

- Direct Fire up 40%
- Indirect Fire up 27%
- IEDs up 27%
- Surface to Air Fire up 67%

• INS remains seasonal
• More asymmetric



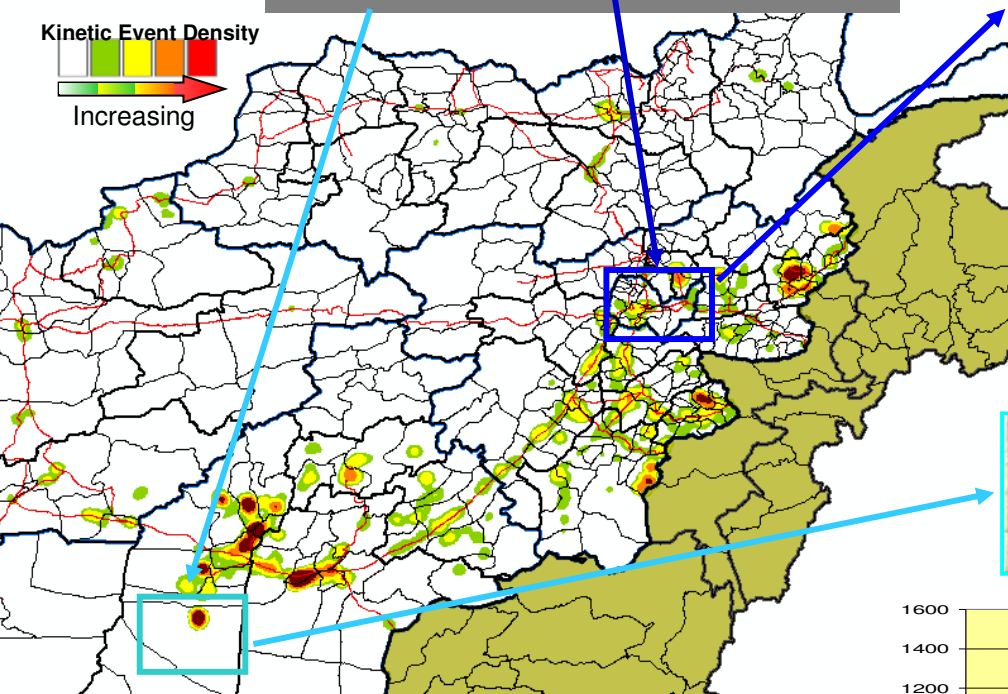
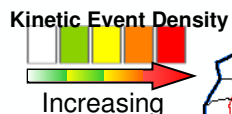
- **27%** increase in IED events / **29%** increase in casualties
- **24%** increase in discoveries* (by volume)
 - 2007 / 2008 discoveries* = 35% of all IED events
- **21%** increase in civilian turn-ins



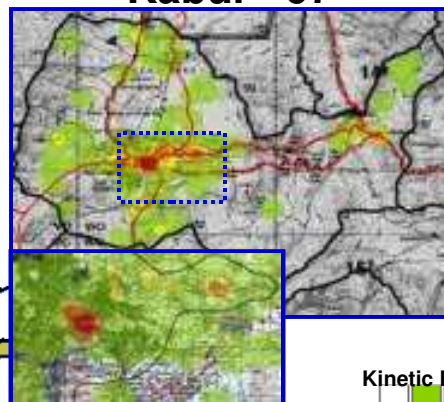
*discoveries = IED finds + turn-ins 4

Change In Kinetic Event Density 1 Jan - 28 Dec 07 and 08

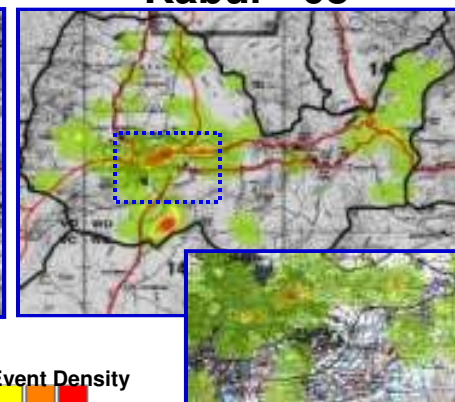
- Decreased events in select areas
- Kabul: City 47%; Province 15%
- ANSF deaths down 61%
- Garmsir: 43%



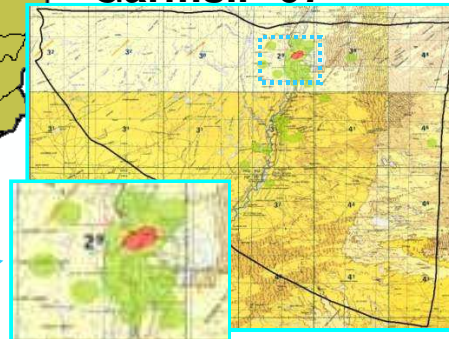
Kabul* '07



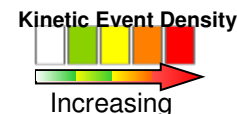
Kabul* '08



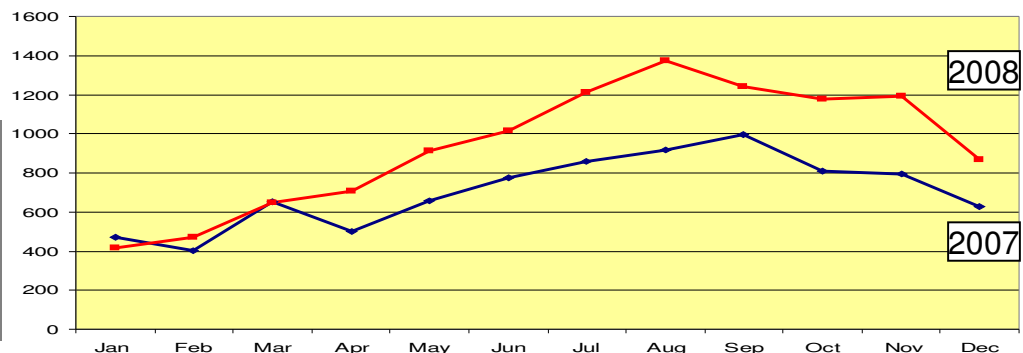
Garmsir '07



Garmsir '08

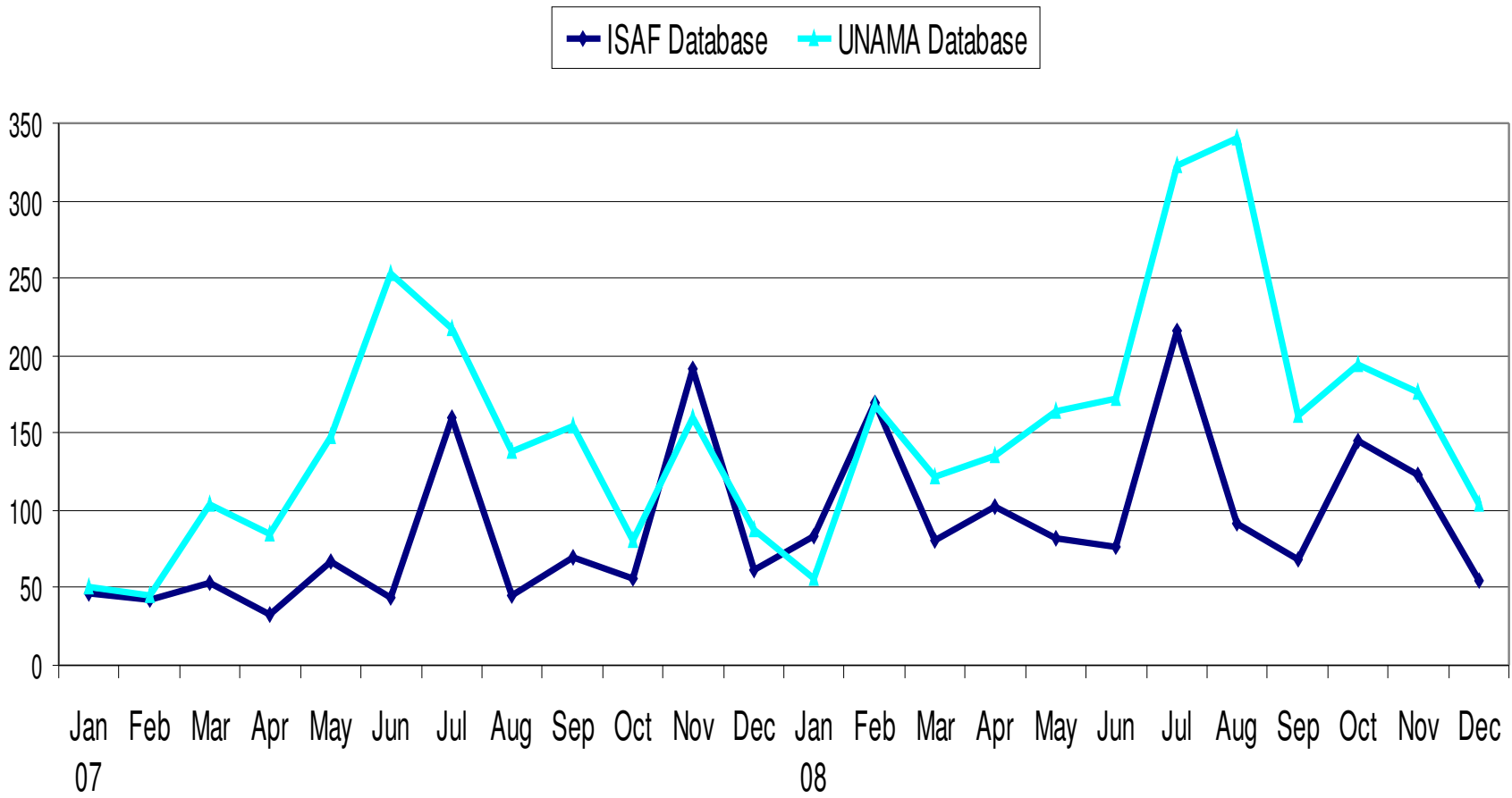


- 33% more kinetic events in '08 - same areas
- Increased event levels due to:
 - More ISAF / ANSF operating in more areas
 - Increased asymmetric methods
 - Continued sanctuary in PAK



*Density range / calibration differs from province to district in order to show differences

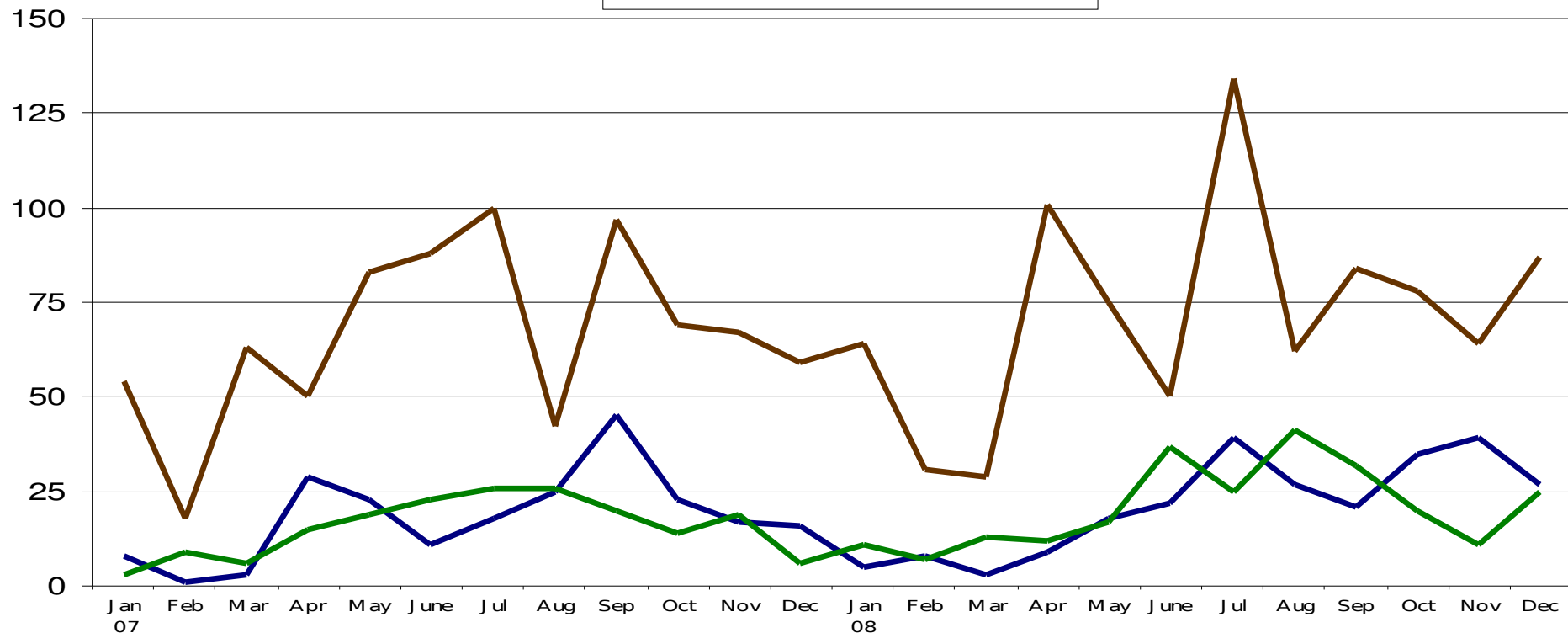
- **Up 46%** according to ISAF (JOIIS/NATO) database
- **Up 40%** according to UNAMA database
- **INS cause 80% of civilian casualties****



*does not include criminal events
 ** according to ISAF reports / investigations

- Overall Trend **up 12%**
 - ISAF/OEF: **up 35%**
 - ANA: **up 16%**
 - ANP: **up 9%**
- ANP - over 60% of total since Jan 2007

— ANA — ANP — ISAF

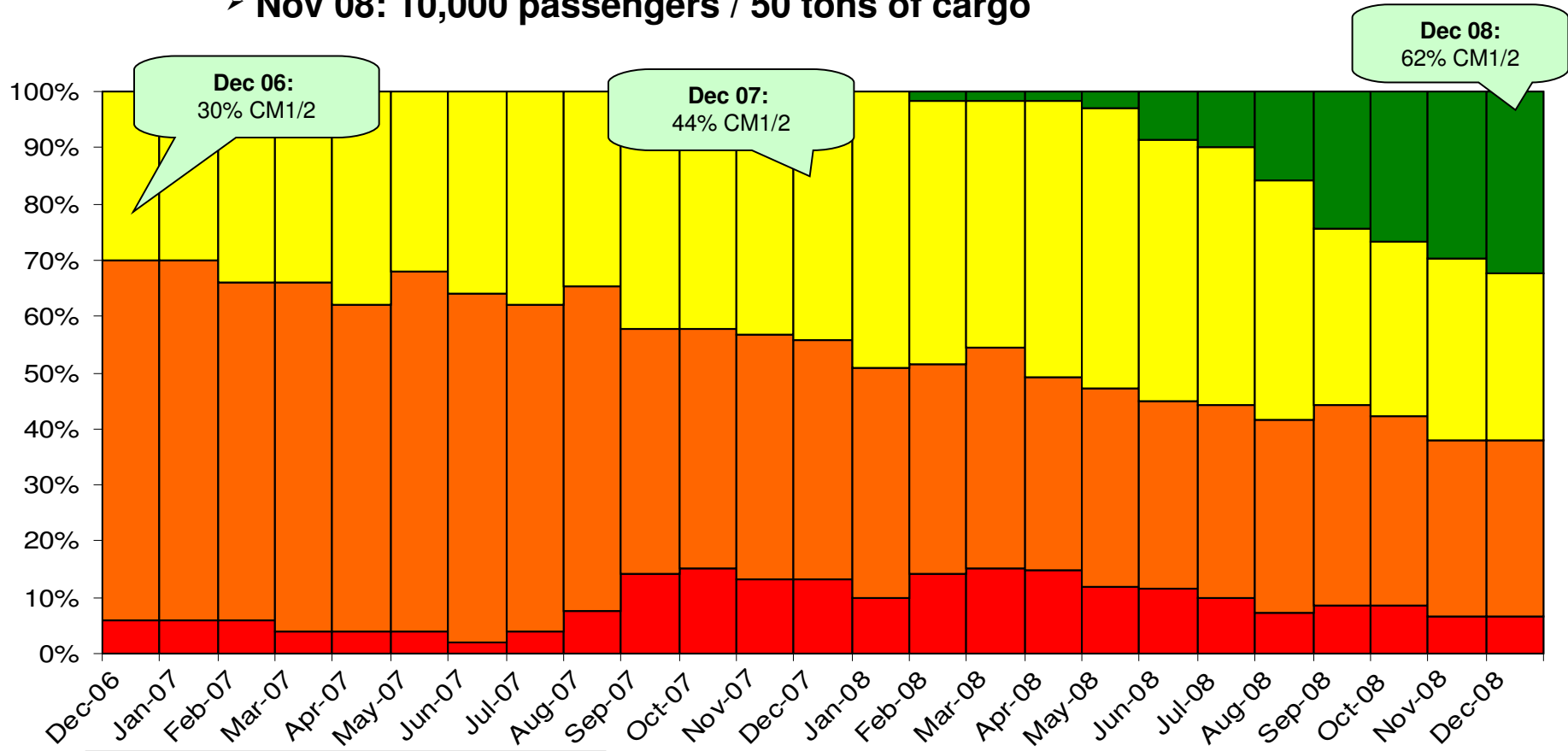


*Attributed to "Big 8"



ANA Size and Capability

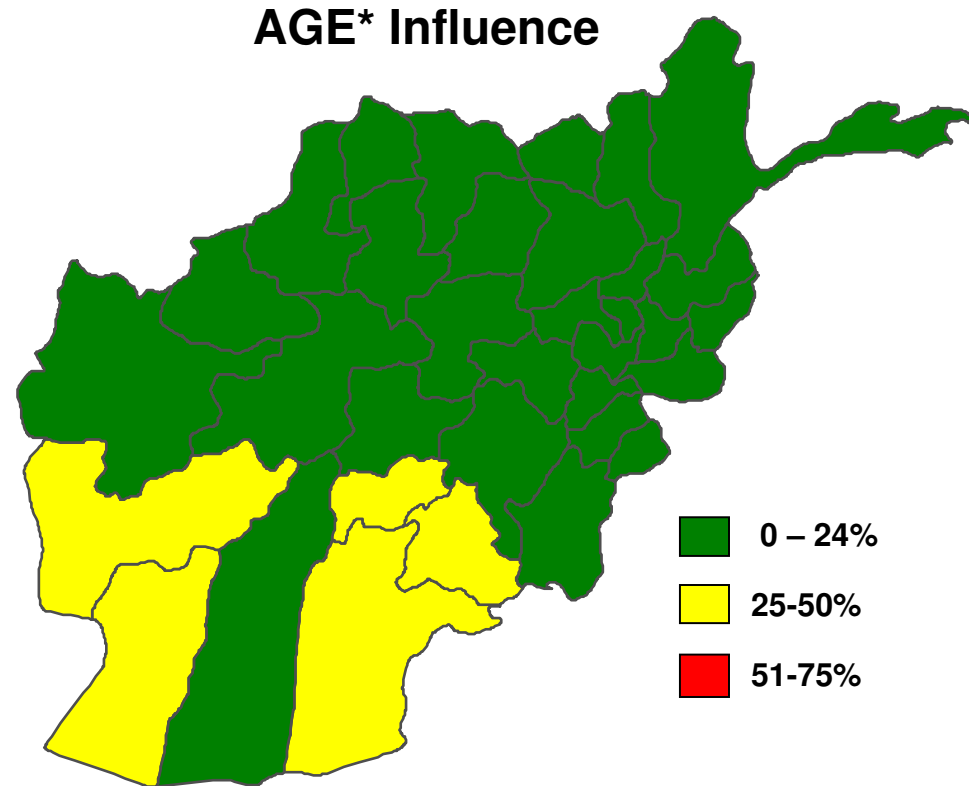
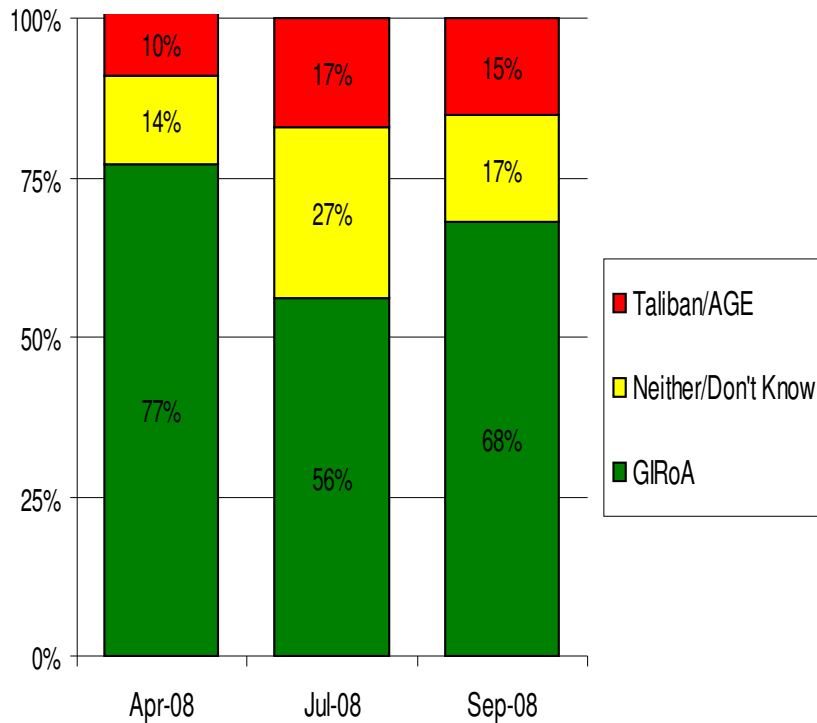
- ANA Increasingly Conducting and Leading Operations (62% of total)
- ANA Air Corps have over tripled monthly troop and cargo capacity since Feb 08
 - Feb 08: 3,000 passengers / 10 tons of cargo
 - Nov 08: 10,000 passengers / 50 tons of cargo



CM ¹ Level	Description
CM 1	BN Level Ops, IF ² Enables
CM 2	BN Level Ops with IF Spt
CM 3	Co Level Ops with IF Spt
CM 4	Unit Formed, No Capability

¹CM = Capability Milestone Rating
²IF = International Forces

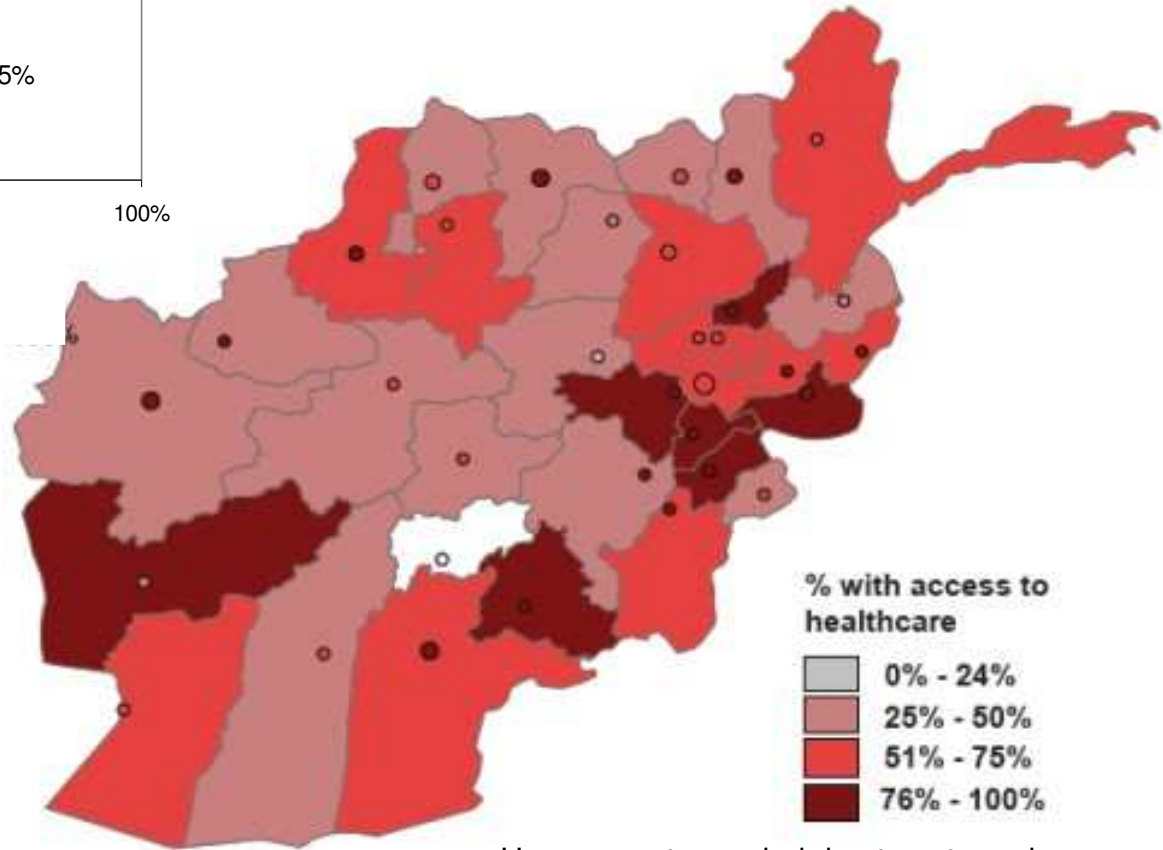
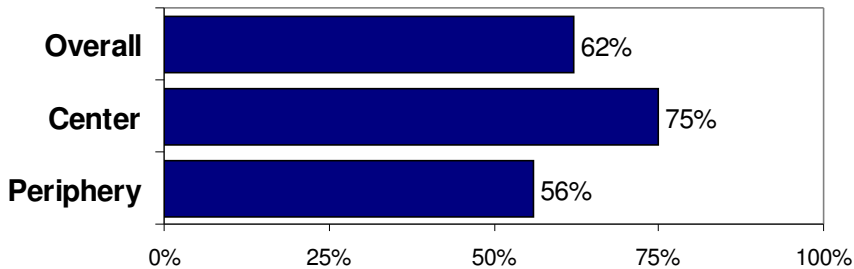
"Between the AGE* and the Government, who has more influence in your area?"



* Anti-Government Elements, word used in Dari & Pashto

Major issues related to healthcare assessment arise from the lack of a basic acceptable standard of "healthcare." Many Afghans deem simple items such as vaccination as "healthcare."

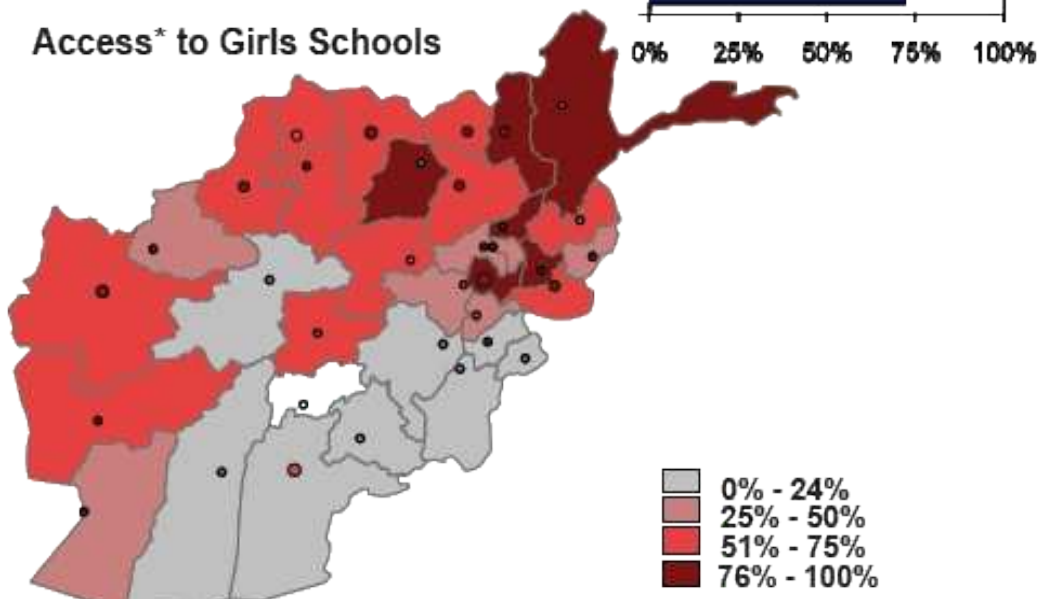
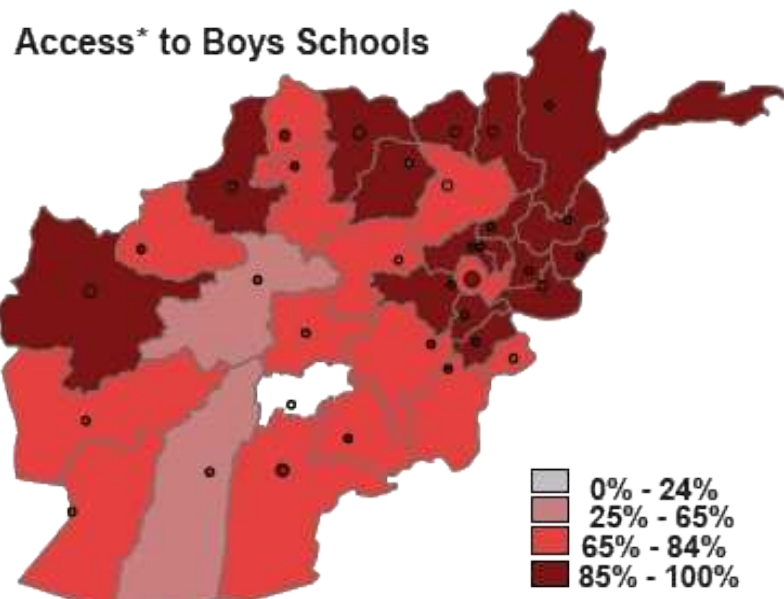
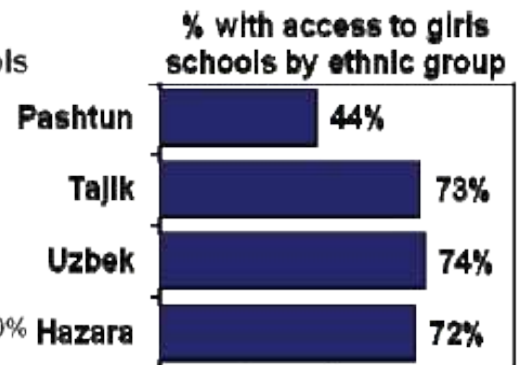
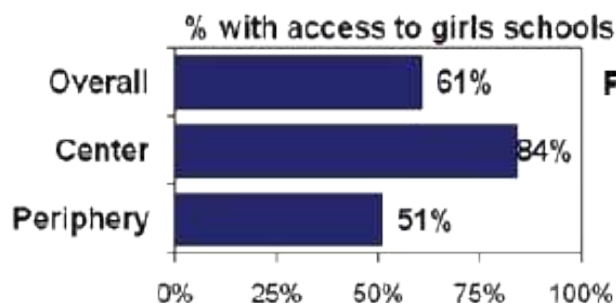
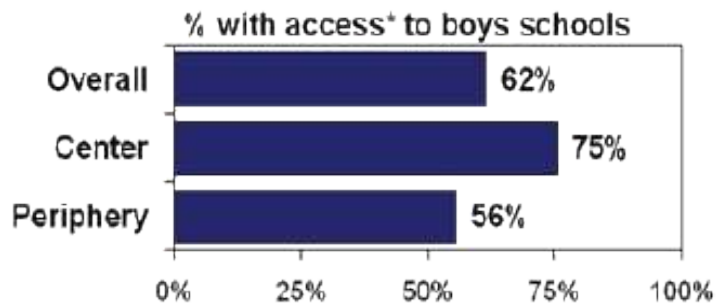
% with access to a clinic or Hospital



Uruzgon not sampled due to extremely poor security & high risk

Population approx. 300k; 1% of Afghanistan

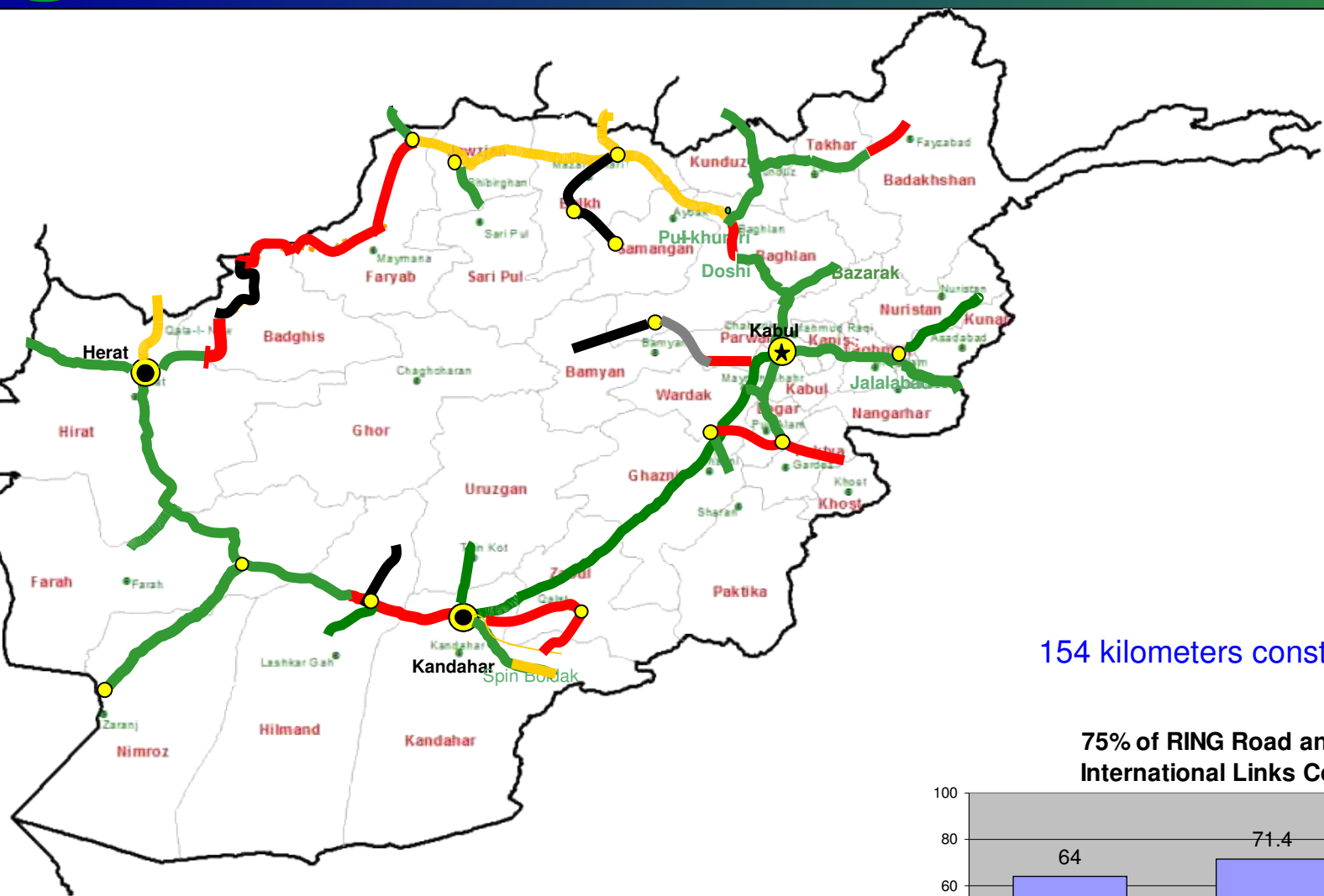
Access* to schools for both girls and boys varies across the country and is tightly linked to security. Degree of access to girls schools is also an ethno-geographic factor.



Uruzgon not sampled due to extremely poor security & high risk
Population approx. 300k; 1% of the Afghanistan's population



Ring Road & International Links (Dec 08)



154 kilometers constructed in 2008

75% of RING Road and 44% of International Links Completed

