

See discussions, stats, and author profiles for this publication at: <https://www.researchgate.net/publication/332469913>

Oceanographic barriers, divergence, and admixture: Phylogeography and taxonomy of two putative subspecies of short-finned pilot whale

Article in *Molecular Ecology* · April 2019

DOI: 10.1111/mec.15107

CITATIONS

11

READS

586

16 authors, including:



Amy M Van Cise

Northwest Fisheries Science Center

17 PUBLICATIONS 146 CITATIONS

[SEE PROFILE](#)



Robin William Baird

Cascadia Research Collective

272 PUBLICATIONS 7,917 CITATIONS

[SEE PROFILE](#)



C. Scott Baker

Oregon State University

712 PUBLICATIONS 12,095 CITATIONS

[SEE PROFILE](#)

Some of the authors of this publication are also working on these related projects:



Population structure, abundance and reproductive parameters of bottlenose dolphins (*Tursiops truncatus*) in the Bay of Islands (Northland, New Zealand) [View project](#)



DwH NRDA [View project](#)



Oceanographic barriers, divergence, and admixture: Phylogeography and taxonomy of two putative subspecies of short-finned pilot whale

Amy M. Van Cise^{1,2,3} | Robin W. Baird⁴ | Charles Scott Baker⁵ | Salvatore Cerchio⁶ | Diane Claridge⁷ | Russell Fielding⁸ | Brittany Hancock-Hanser² | Jacobo Marrero^{9,10} | Karen K. Martien² | Antonio A. Mignucci-Giannoni¹¹ | Erin M. Oleson¹² | Marc Oremus⁵ | M. Michael Poole¹³ | Patricia E. Rosel¹⁴ | Barbara L. Taylor² | Phillip A. Morin²

¹Scripps Institution of Oceanography, La Jolla, California

²Southwest Fisheries Science Center, National Marine Fisheries Service, NOAA, La Jolla, California

³Woods Hole Oceanographic Institution, Woods Hole, Massachusetts

⁴Cascadia Research Collective, Olympia, Washington

⁵Marine Mammal Institute, Hatfield Marine Science Center, Oregon State University, Newport, Oregon

⁶New England Aquarium, Boston, Massachusetts

⁷Bahamas Marine Mammal Research Organisation, Abaco, Bahamas

⁸Department of Earth & Environmental Systems, University of the South, Sewanee, Tennessee

⁹Asociación Tonina, Investigación y Divulgación del medio natural Marino, San Cristóbal de La Laguna, Spain

¹⁰BIOECOMAC, Department of Animal Biology, La Laguna University, La Laguna, Tenerife, Canary Islands, Spain

¹¹Centro de Conservación de Manatíes de Puerto Rico, Universidad Interamericana, Bayamón, Puerto Rico

¹²Pacific Islands Fisheries Science Center, National Marine Fisheries Service, NOAA, Honolulu, Hawaii

¹³Marine Mammal Research Program, Moorea, French Polynesia

¹⁴Southeast Fisheries Science Center, National Marine Fisheries Service, NOAA, Lafayette, Louisiana

Correspondence

Amy M. Van Cise, Woods Hole Oceanographic Institution, Woods Hole, MA.
Email: avancise@gmail.com

Funding information

Commander; U.S. Pacific Fleet Environmental Readiness Division and NMFS Pacific Islands Fisheries Science Center; NMFS West Coast Region; Scripps Institution of Oceanography Edna Bailey Sussman Research Fellowship; Woods Hole Oceanographic Institution

Abstract

Genomic phylogeography plays an important role in describing evolutionary processes and their geographic, ecological, or cultural drivers. These drivers are often poorly understood in marine environments, which have fewer obvious barriers to mixing than terrestrial environments. Taxonomic uncertainty of some taxa (e.g., cetaceans), due to the difficulty in obtaining morphological data, can hamper our understanding of these processes. One such taxon, the short-finned pilot whale, is recognized as a single global species but includes at least two distinct morphological forms described from stranding and drive hunting in Japan, the “Naisa” and “Shiho” forms. Using samples ($n = 735$) collected throughout their global range, we examine phylogeographic patterns of divergence by comparing mitogenomes and nuclear SNP loci. Our results suggest three types within the species: an Atlantic Ocean type, a western/central Pacific and Indian Ocean (Naisa) type, and an eastern Pacific Ocean and northern Japan (Shiho) type. mtDNA control region differentiation indicates

these three types form two subspecies, separated by the East Pacific Barrier: Shiho short-finned pilot whale, in the eastern Pacific Ocean and northern Japan, and Naisa short-finned pilot whale, throughout the remainder of the species' distribution. Our data further indicate two diverging populations within the Naisa subspecies, in the Atlantic Ocean and western/central Pacific and Indian Oceans, separated by the Benguela Barrier off South Africa. This study reveals a process of divergence and speciation within a globally-distributed, mobile marine predator, and indicates the importance of the East Pacific Barrier to this evolutionary process.

KEYWORDS

cetacean, *Globicephala macrorhynchus*, phylogeography, population structure, taxonomy

1 | INTRODUCTION

Genomic phylogeography is the modern continuation of classic taxonomic disciplines, and as such has an important role in the description of evolutionary processes such as isolation, selection, and speciation (Bowen et al., 2016). Marine phylogeography attempts to evaluate these processes in an environment with few obvious barriers and many widely distributed species, some with large home ranges and long migratory routes. However, meta-analyses of phylogeography across several marine taxa reveal some common, large-scale barriers between what may be considered biogeographic provinces. These include the Isthmus of Panama, separating the Pacific and Atlantic Oceans; the East Pacific Barrier, which is the large, oligotrophic, deep open ocean that limits the dispersal of many tropical species between the eastern Pacific Ocean and the central/western Pacific Ocean; the Indo-Pacific Barrier (the Indo-Malay Archipelago), separating the western Pacific and Indian Oceans; the Benguela Barrier, separating the Indian and Atlantic Oceans; and the equatorial tropics, separating temperate species in the northern and southern hemispheres (Bowen et al., 2016; Davies, 1963; Gaither, Bowen, Rocha, & Briggs, 2016; Lessios, 2008; Perrin, 2007).

These barriers often cause genetic divergence that gives rise to populations, subspecies, or species. However, taxonomic under-classification can limit our understanding of evolutionary processes such as isolation and divergence, inhibit our understanding of the ecological drivers of species evolution, and undermine conservation efforts (Bowen et al., 2016; Taylor, Archer, et al., 2017; Taylor, Perrin, et al., 2017). Taxonomic species delineation based on morphological characteristics sometimes overlooks the existence of cryptic species, subspecies, or evolutionarily important population structure (Rosel et al., 2017; Taylor, Perrin, et al., 2017). Recent advances in genomic techniques allow researchers to describe species' taxonomy and population structure with higher resolution than was previously possible (Cammen et al., 2016), oftentimes revealing cryptic speciation in the absence of physical barriers to dispersal, driven by local adaptation and/or social behaviour (Leslie & Morin, 2016; Morin et al., 2015; Pazmiño et al., 2018; Podos, 2010; Rendell, Mesnick, Dalebout, Burtenshaw, & Whitehead, 2012; Rocha, Craig, & Bowen, 2007; Smith & Friesen, 2007; Yoshino, Armstrong, Izawa, Yokoyama, & Kawata, 2008).

This is especially true for some cetaceans, which, despite being highly mobile, often exhibit high site fidelity and adaptation to local environments (Andrews et al., 2010; Bowen et al., 2016; Foote et al., 2016; Hamner et al., 2012; Mahaffy, Baird, McSweeney, Webster, & Schorr, 2015). Others have ranges that cover entire ocean basins, yet exhibit socially-driven population structure (Balcazar et al., 2015; Carroll et al., 2015; Rendell et al., 2012; Witteveen et al., 2011). In this study, we use genetic data to understand the evolutionary phylogeography and propose taxonomic revision of a data-deficient cetacean species, the short-finned pilot whale, in order to improve our ability to understand evolutionary processes within this taxonomic unit.

Short-finned pilot whales (*Globicephala macrorhynchus*) are recognized as a single species with a pan-tropical and pan-temperate distribution, strong social structure (Alves et al., 2013; Mahaffy et al., 2015; Whitehead, 1998), site fidelity (Mahaffy et al., 2015), and low mtDNA diversity with widely distributed mtDNA control region haplotypes (Oremus et al., 2009; Van Cise et al., 2016). Two morphologically and genetically distinct types, originally described off Japan (Kasuya, Miyashita, & Kasamatsu, 1988; Oremus et al., 2009; Yamase, 1760), have largely nonoverlapping distributions throughout the Pacific Ocean based on samples examined to date (Van Cise et al., 2016), as well as distinct vocal repertoires in tested regions (Van Cise, Roch, Baird, Mooney, & Barlow, 2017). These two types, called "Naisa" and "Shiho" types, were originally described in 1760 based on morphological characteristics (Yamase, 1760). Their parapatric distributions around Japan remain segregated due to differing habitat preferences associated with thermally differentiated currents (Kasuya et al., 1988).

The Naisa and Shiho types differ in body size, melon and skull shape, colour pattern (specifically the brightness of the saddle patch), and number of teeth (Kasuya et al., 1988; Miyazaki & Amano, 1994; Polisini, 1980; Yonekura, Matsui, & Kasuya, 1980). Naisa-type individuals are the smaller of the two types (females 316–405 cm, males 422–525 cm [Chivers, Perryman, Lynn, West, & Brownell, 2018]), with square-shaped melons and a dark, barely visible saddle patch. Shiho-type individuals are larger by 1–2 m, with rounded melons and a bright saddle patch.

Based on morphological data and mtDNA control region sequences from outside Japan, the Shiho type has been found in the eastern Pacific Ocean from the northern to southern extent of the

short-finned pilot whale range, while the Naisa type has been found in the central/western Pacific Ocean and in the Indian Ocean (Chen et al., 2014; Chivers et al., 2018; Oremus et al., 2009; Polisini, 1980; Van Cise et al., 2016). A single skull collected from Alaska indicates that the historical range of the Shiho type may have extended between the eastern North Pacific Ocean and northern Japan. Nuclear sequences from samples collected in Hawaii, the Mariana Islands, and the eastern Tropical Pacific Ocean (ETP) suggest that the two types may be genetically distinct in their nuclear DNA, with no male-mediated gene flow between them (Van Cise, Morin, Baird, Oleson, & Martien, 2016). This evidence suggests that Naisa- and Shiho-type short-finned pilot whales may be subspecies or species, but further genetic sampling and analyses from throughout the global range of the species is needed to determine the correct taxonomic delimitation of these two types.

To date, a global taxonomic study of short-finned pilot whales has been inhibited by a lack of samples from the Indian and Atlantic Oceans. The limited data that are published suggest that the distribution of the Naisa type may extend into the Indian Ocean (Van Cise et al., 2016), while samples from the Atlantic Ocean have not yet been classified. These data are insufficient to resolve how short-finned pilot whales from these two ocean basins are related to the two types described in the Pacific Ocean. In this study we examine the global phylogeography of short-finned pilot whales, and present a formal proposal to recognize two subspecies of short-finned pilot whale.

2 | MATERIALS AND METHODS

2.1 | Sample collection and sequencing

Samples were obtained from NOAA's SWFSC Marine Mammal and Sea Turtle Research (MMASTR) Collection ($n = 268$) and from other

contributors and collections throughout the world ($n = 53$). The majority of tissue samples were collected by dart-biopsy of free-ranging whales, using an 8 mm diameter biopsy dart deployed from a crossbow. All samples were collected under permit and according to protocol to minimize disturbance to the animals. When possible, sampling was limited to one to two individuals per encounter in order to minimize the effect of related individuals on population structure. Additional samples were obtained from stranded animals. Sampling locations are shown in Figure 1, and sample details in Table S1.

DNA was extracted from tissue samples using the methods described by Martien, Chivers, et al. (2014). Genomic libraries were prepared and pooled for separate capture enrichment of mitogenome and nuclear SNP loci according to the methods described in Hancock-Hanser et al. (2013) with minor modifications. The libraries used for nuclear locus enrichment were prepared using 400 ng of DNA per sample, pooled in equimolar amounts prior to capture enrichment on capture arrays containing nuclear loci only. The nuclear SNP capture array was modified from Van Cise et al. (2017) to include 54 targeted loci, rather than the original 78 targeted loci, based on results from capture arrays used in Van Cise et al. (2017). Single-end 100 bp reads were sequenced on an Illumina HiSeq500.

2.2 | Mitogenome assembly

Mitogenome sequences were assembled using custom R scripts (R Core Team, 2016) written at SWFSC (Dryad data repository <https://doi.org/10.5061/dryad.cv35b>), which call on the Burrows-Wheeler alignment program (BWA; Li & Durbin, 2009). The reference sequence used to assemble mitogenome sequences (GenBank

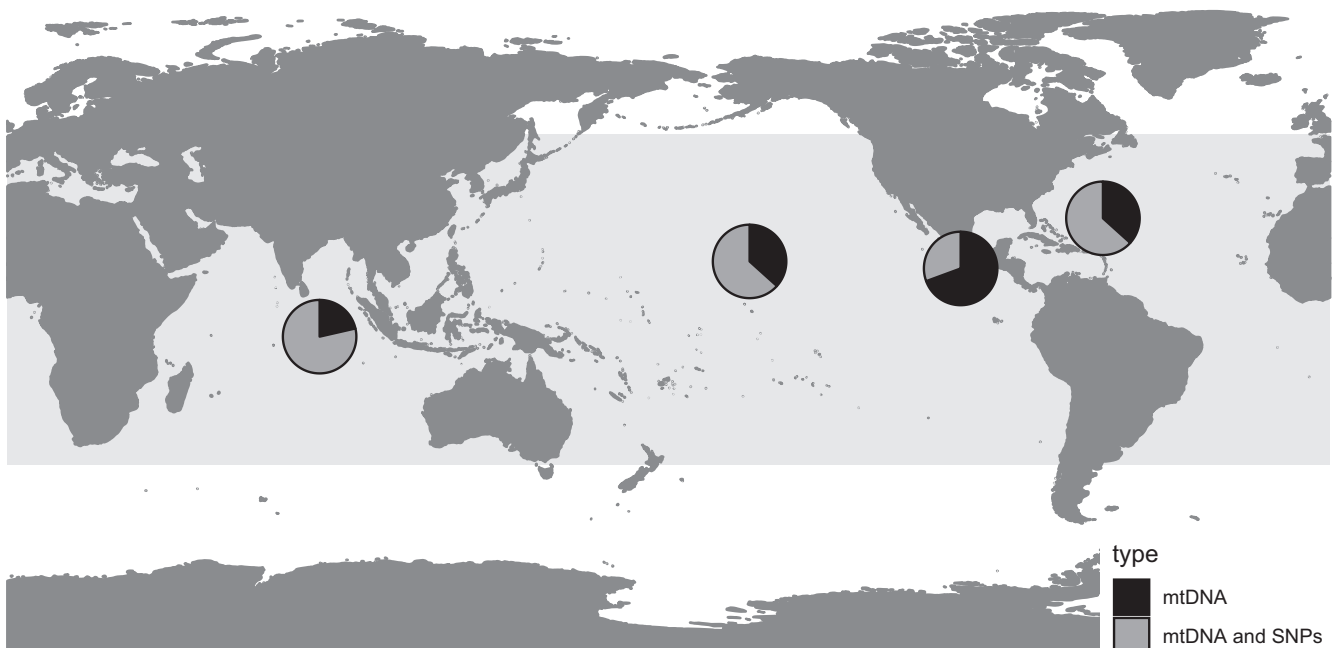


FIGURE 1 Global sampling locations of samples used to generate mitogenome and SNP sequences used in this study. The shaded region indicates the general global distribution of short-finned pilot whales. A detailed map of sample distribution can be found in Figure S6

Accession No. JF339976) was modified at the ends to include 40 bp from the opposite end, in order to improve coverage in these regions across the artificial break point in the linearized sequence.

In most cases, nucleotides were called at a locus if there were at least 10 reads and that nucleotide was called in >80% of the reads, or if a locus had at least five reads with 100% agreement in nucleotide calling. Due to the possibility of “index-hopping” during library amplification and by Illumina sequencers (Jun et al., 2012; Kircher, Sawyer, & Meyer, 2012), the R scripts were modified to include additional quality control steps. If the 80% threshold was not met, an additional filtering step was used to probabilistically call the nucleotide at that locus. First, we determined the “common” nucleotide at each locus across all samples in the data set, which was defined as the nucleotide that was represented in >50% of the samples at the locus. We also determined the “rare” nucleotide at each locus, or the nucleotide(s) represented in <50% of the samples at that locus. Next, for each locus in each sample we calculated the number of reads that matched the common nucleotide, and the number of reads that matched one or more rare nucleotides. The common nucleotide was called if the proportion of common reads at that locus in the sample (common read proportion, crp) was greater than the common read proportion at that locus across the entire sample pool (pooled common read proportion, pcrp). In other words, if $crp > pcrp$, the final call for that site went to the common nucleotide. Finally, rare nucleotides were called using a conservative, two-step approach that required (a) a high ratio of rare reads at that position in that sample versus the pooled data set, and (b) a high binomial probability of the rare nucleotide at that site. If the proportion of rare nucleotide reads at that locus in the sample (rare read proportion, rrp) was greater than the proportion of the rare read at that site across all samples (pooled rare read proportion, prrp) by a ratio of at least $rrp = (prrp + 0.25)/1.25$, then the locus in question was passed to the binomial probability test based on the frequency of each nucleotide at that site across the entire sample set. The rare read at each locus had to pass the binomial probability test with a binomial probability greater than 95%. If the rare nucleotide passed each of these tests at a given locus for a given sample, the final call for that site went to the rare nucleotide. The modified R script is included as Appendix S1. Finally, consensus sequences for each individual were aligned and visually inspected in GENEIOUS (V. 7.1.5; Biomatters), and unique variants were verified by visual comparison with the BAM files.

2.3 | Nuclear assembly and SNP genotyping

Nuclear sequences containing 112 SNPs in 54 previously selected and quality controlled loci (Van Cise et al., 2017) were assembled as in Morin et al. (2015). Sequences were assembled using custom scripts (Dryad data repository <https://doi.org/10.5061/dryad.cv35b>) and reference sequences previously obtained from a draft genome of the common bottlenose dolphin (*Tursiops truncatus*; assembly turTru1, Jul 2008; database version 69.1) as described elsewhere (Hancock-Hanser et al., 2013; Van Cise et al., 2017). For each individual, SNP genotypes were called only if there were a minimum of

10 reads at each position, to minimize genotyping error (Fountain, Pauli, Reid, Palsbøll, & Peery, 2016). SNPs within the same locus were combined into multi-SNP genotypes using PHASE (Morin et al., 2012; Stephens & Donnelly, 2003). Phasing was based on allele frequencies across all samples, with a cutoff threshold of 0.5 to minimize bias against rare heterozygotes (Garrick, Sunnucks, & Dyer, 2010), and the MCMC was run with a burn-in of 10,000, followed by 10,000 iterations, and thinned by 100 iterations.

2.4 | Data analysis: Phylogeography

The published literature uses the terms “Naisa type” and “Shiho type” to refer to two groups identified using mitochondrial and morphological data. Because multiple genetic data sets are used in this study (mitogenomes, nuclear SNPs, and control region sequences), we use specific nomenclature to orient the reader to the data set being used in each analysis. When discussing structure derived using mitogenome sequences, we refer to mitogenomic “clades”. Similarly, when discussing nuclear SNP data we refer to nuclear “groups”. Finally, we combine the mitogenome and nuclear SNP results to form a hypothesis of phylogeographic structure within short-finned pilot whales based on geographically defined strata, and refer to these as “strata”, which we test using control region sequences. Control region sequences are used to test strata, rather than mitogenomes, in order to include a larger number of samples from the geographic range of the species, and to allow for comparison with published guidelines on taxonomic delimitation in marine mammals (Taylor, Archer, et al., 2017).

Mitogenome sequences were assigned haplotype labels using the STRATA-G package (Archer, Adams, & Schneiders, 2017) implemented in the R computing environment. Tree topology was determined based on those haplotypes using a Bayesian maximum-clade-credibility (MCC) phylogenetic approach implemented in BEAST v. 1.8.4 (Drummond, Suchard, Xie, & Rambaut, 2012), rooted using a long-finned pilot whale mitogenome as the outgroup (GenBank Accession #HM060334.1). We used an HKY substitution model (Hasegawa, Kishino, & Yano, 1985) with gamma + invariant sites, which was selected using jMODELTEST (Darriba, Taboada, Doallo, & Posada, 2012; Guindon & Gascuel, 2003) for the complete mitochondrial genome haplotype alignment. We used an average substitution rate of 6.24×10^{-9} substitutions/site/year, based on recent analyses of killer whales (*Orcinus orca*) (Morin et al., 2015). Low mtDNA control region diversity (Van Cise et al., 2016) indicates a shallow tree; therefore, we do not expect variability in the substitution rate among branches. We therefore used a strict clock with a normal distribution and a standard deviation of 1×10^{-7} . Finally, we used a constant-size coalescent tree prior (Kingman, 1982) and 10 million MCMC steps sampled every 1,000 steps. Convergence of four replicate runs was checked using TRACER v1.6 (Rambaut, Suchard, Xie, & Drummond, 2014) and RWTY (Warren, Geneva, & Lanfear, 2017). TREEANNOTATOR (v1.8.1) in the BEAST software cluster (Drummond et al., 2012) was used to generate the maximum clade credibility tree after removal of the first 10% of trees. Additionally, a haplotype median joining

network (MJN; Bandelt, Forster, & Röhl, 1999) was generated using the program PopArt with default parameter settings (Leigh & Bryant, 2015).

We examined population structure in the nuclear genotypes using STRUCTURE (Pritchard, Stephens, & Donnelly, 2000), implemented in R using the STRATAG package. We used settings for correlated allele frequencies, 10,000 MCMC steps with a burn-in of 1,000 steps, and a k -range of one to six with five runs for each k . For each value of k , runs were combined into a single output using CLUMPP (Jakobsson & Rosenberg, 2007), and the optimum k value was selected by calculating the modal Δk using Evanno metrics (Evanno, Regnaut, & Goudet, 2005; Verity et al., 2016). In order to ensure that strong signals did not hide more localized population structure, additional STRUCTURE analyses were performed within mitogenome clades and within the geographic regions defined in the mitogenome population structure analyses below. We further used STRATAG to calculate the number of alleles in each of the nuclear groups when $K = 2$ (Naisa and Shiho groups), as well as the proportion of private alleles in each. We also analyzed nuclear differentiation using a Discriminant Analysis of Principal Components (DAPC), implemented in R using the ADEGENET package (Jombart, 2008; Jombart & Ahmed, 2011). We first ran an unsupervised k -means DAPC to determine the number of clusters in the data by minimizing BIC. We then ran a supervised DAPC, choosing the optimum number of PCs with a 10-fold cross-validation test using a random selection of 90% of the data for training and 1,000 repetitions, to minimize root mean square error (RMSE) in classification when compared with STRUCTURE classifications.

2.5 | Data analysis: Taxonomy and the subspecies hypothesis

We tested the subspecies hypothesis by calculating divergence and diagnosability according to guidelines established by Taylor, Perrin, et al. (2017). According to these guidelines, when using mtDNA control region sequences to quantify differentiation, taxonomic categories for cetaceans (populations, subspecies, and species) are best characterized using Nei's d_A (subspecies: >0.004 , species: >0.02) and percent diagnosability (PD) using a bootstrapped Random Forest analysis (subspecies and species: $>95\%$). Morphological data were not available for all samples, and therefore could not be used to stratify control region sequences for hypothesis testing. Therefore, we used the independent, unsupervised clustering of SNP data into nuclear groups to stratify samples into three groups, which were then tested for divergence and diagnosability using control region sequences. Using control region sequences for this analysis allows us to integrate a larger number of samples into this test, and to compare our results with established guidelines for taxonomic delimitation in marine mammals. This test was conducted in two steps: in the first, only samples that were grouped a priori based on STRUCTURE analysis of SNP data were included ($n = 105$); in the second, all samples from the current study and previous studies for which we had mtDNA control region sequences (Hill et al., 2015; Martien, Hill, et al., 2014;

Oremus et al., 2009; Van Cise et al., 2017, 2016) were included, resulting in a total of 725 samples. The additional samples were assigned to a type based on sampling location, corresponding with the STRUCTURE-derived nuclear group stratification. In order to account for the potential effect of social structure on pairwise estimates of divergence and diagnosability, we subsampled the full control region data set to include no more than three samples from each encounter with a group of pilot whales ($n = 619$), then re-ran these analyses and included the results in the Appendix S2.

Molecular diversity indices were calculated for all samples, and for each stratum, for mitogenomes (Theta [θ_H], mean nucleotide diversity [π], haplotype diversity, and number of haplotypes) and SNP genotypes (average number of alleles per locus, expected and observed heterozygosity [H_e , H_o]), using the STRATAG package in R.

Pairwise differentiation was calculated to test the hypotheses that the STRUCTURE-derived stratification represents distinct populations, subspecies, or species, according to guidelines for subspecies delimitation presented by Taylor, Archer, et al. (2017), Archer, Martien and Taylor (2017), and Rosel et al. (2017). Because each pairwise comparison tested a unique hypothesis, corrections for multiple pairwise tests are inappropriate for this analysis and were therefore not conducted (Armstrong, 2014; Perneger, 1998). In order to compare our results with guidelines on subspecies and species (Taylor, Archer, et al., 2017), we extracted 345 bp of the mitochondrial control region sequence from all mitogenomes, and combined these with previously published control region sequences throughout the global distribution of short-finned pilot whales (Oremus et al., 2009; Van Cise et al., 2016). We estimated Φ_{ST} ; net nucleotide divergence, or d_A (Nei, 1987); and PD based on a random forest classification algorithm following Archer, Martien, et al. (2017). Φ_{ST} was calculated using a Tamura–Nei model with invariant sites and without a gamma correction (Tamura & Nei, 1993), which was identified by JMODELTEST2 (Darriba, et al., 2012) as the substitution model that best fit the data; p -values were calculated based on 1,000 permutations. d_A was calculated using p -distance without a correction factor, with pairwise deletion of sites with indels, using a bootstrap approach with 1,000 replications. We estimated the magnitude of nuclear F_{ST} among STRUCTURE-assigned nuclear groups using SNP genotypes, but did not test the significance of this estimate because the nuclear groups are not a priori hypotheses. Mitochondrial F_{ST} was not calculated because it has been found to be an unreliable indicator of taxonomic classification, exhibiting broad overlap in values among taxonomic classes within the order Cetartiodactyla (Rosel et al., 2017).

3 | RESULTS

Full mitogenome sequences (16,390 bp) were successfully assembled for 181 samples. Ninety-seven unique mitogenome haplotypes were found. Sixty-two haplotypes had no unknown nucleotides, and all but four mitogenome sequences had 10 or fewer Ns; haplotypes mtGen13, mtGen80, mtGen81, mtGen89 had 21, 111, 38, and 12 Ns,

TABLE 1 Molecular diversity indices for mitogenomes, mtDNA control region (345 bp), and nDNA SNP ($n = 47$) data sets

Stratum	N	θ_H	π	Haplotype diversity	No. haplotypes	Average no. alleles	H_o	H_e
Mitogenome sequences								
All samples	181	0.73	0.002	0.98	97	–	–	–
Naisa clade	77	0.69	0.0008	0.92	35	–	–	–
Shiho clade	43	0.68	0.0003	0.91	26	–	–	–
Clade 3	36	0.71	0.0005	0.96	22	–	–	–
Atlantic clade	25	0.69	0.0007	0.92	14	–	–	–
Control region sequences								
STRUCTURE-derived nuclear group samples only								
All samples	105	0.69	0.007	0.93	46	4.4	0.40	0.46
Naisa group	69	0.66	0.007	0.88	28	4.1	0.43	0.45
Shiho group	14	0.38	0.002	0.51	5	2.2	0.27	0.27
Atlantic group	22	0.72	0.003	0.97	17	2.7	0.36	0.37
Proposed type								
All samples	725	0.62	0.008	0.83	64	–	–	–
Naisa type	485	0.54	0.006	0.72	38	–	–	–
Shiho type	190	0.28	0.002	0.38	13	–	–	–
Atlantic type	50	0.60	0.002	0.081	17	–	–	–

Note: The SNP data set includes 112 SNPs at 47 unique loci.

Abbreviations: N , mtDNA and SNP sample size; θ_H , Theta; π , nucleotide diversity; H_o , observed heterozygosity; H_e , expected heterozygosity.

respectively. Control region sequences were extracted from these samples and aligned to previously sequenced control regions, resulting in 725 control region sequences from throughout the global distribution of short-finned pilot whales. Genotypes from 112 SNPs were generated at 47 unique loci for 245 samples (Tables S2 and S3); samples were only included if they had genotypes for at least 70% of the 112 SNPs in the data set. A total of 105 samples had both mitogenome sequences and SNP genotypes. Figure S1 shows the number of samples in each data set and overlap between data sets.

3.1 | Phylogeography

Mitochondrial nucleotide diversity and number of haplotypes was greatest within the Naisa nuclear group and the Naisa geographic stratum, while haplotype diversity was greatest within the Atlantic nuclear group and Atlantic stratum (Table 1). Expected and observed heterozygosity, and average number of alleles, were also greatest in the Naisa nuclear group, followed by the Atlantic nuclear group.

The global phylogenetic tree (Figure 2) and mitogenome haplotype MJN (Figure 3) both identify four mitogenomic clades; the previously described Shiho and Naisa types are contained within two of those clades. Mitogenome haplotype frequencies within each clade can be seen in Table S4. The Shiho clade is distinguished from the other three mitogenome clades by 15 substitutions (Figure 3). Shiho-clade short-finned pilot whales are primarily found in the eastern Pacific Ocean and northern Japan, largely separated from the Naisa clade (Figure 4a). The third Pacific clade has a geographic

distribution that largely overlaps the Naisa clade in the Pacific and Indian Oceans, and is referred to as Clade 3 in this study. Clade 3 extends into the eastern Pacific, where it overlaps the distribution of the Shiho clade (Figure 4a). The fourth clade is found only in the Atlantic Ocean, and will therefore be called the Atlantic clade, although there are also three Atlantic Ocean sample haplotypes that were placed within the Naisa clade. Based on the combined BEAST analysis log files, we estimate a mean rate of 7.88×10^{-8} (95% HPD: 5.48×10^{-10} – 2.0×10^{-7}) substitutions/site/year across the entire short-finned pilot whale mitogenome, and the median divergence time of the Shiho clade from all other short-finned pilot whales to be approximately 17.5 Kya (95% HPD: 3–176 Kya). Posterior support for each mitogenomic clade is shown in Figure 2; mitogenome haplotype labels and coalescent time distributions are shown in Figure S2.

Based on ΔK (Evanno et al., 2005; Verity et al., 2016), the STRUCTURE analysis of nuclear SNPs indicated $k = 3$ as the best supported number of groups (Figure S3), and differentiated Naisa, Shiho, and Atlantic nuclear groups, corresponding closely with Naisa, Shiho, and Atlantic mitogenome clades, but did not support the differentiation of mitogenome Clade 3; all but one of the Clade 3 whales grouped with the Naisa nuclear group (Figure 5a). The unsupervised DAPC also returned an optimum group size of $k = 3$. Using 20 PCs (optimized by minimizing RMSE in classification), we achieved 100% classification agreement with the STRUCTURE analysis (Figure 5b).

Some disparity was found between nuclear classifications and mitogenomic clades. One sample from the ETP had a Clade 3 mitogenome but clustered with the Shiho group in its nuclear DNA.

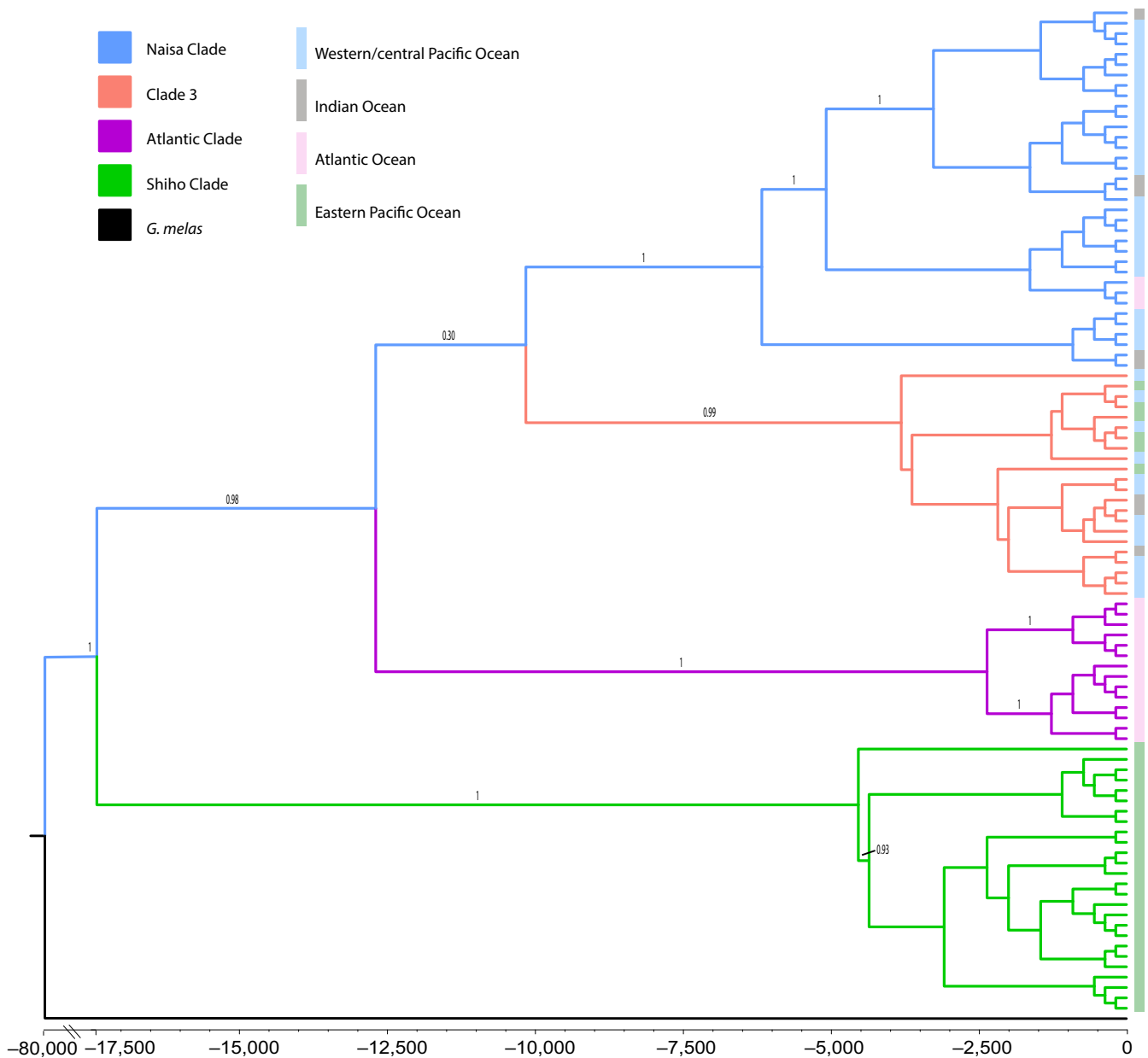


FIGURE 2 BEAST phylogenetic tree of mitogenome data, rooted with *Globicephala melas*, showing four distinct clades. The x-axis is Kya. The posterior probability of each branch is shown above the branch, on a scale from 0 to 1. Each branch represents a mitogenome haplotype, which may be shared by multiple individuals. Mitogenome haplotype labels can be seen in Figure S2, and mitogenome haplotype frequencies can be found in Table S4. The vertical bar on the far right shows the ocean basin where each haplotype was found

Seven samples had Naisa clade mitogenomes but clustered with the Atlantic group in their nuclear DNA; of these, three were collected in the Atlantic Ocean and four were collected in the western/central Pacific and Indian Oceans. One sample, collected in the Bahamas, had an Atlantic clade mitogenome but clustered with the Naisa group in its nuclear DNA (Figure 4b). Additional STRUCTURE analyses (results not shown) did not indicate differentiation within the Shiho or Naisa nuclear groups, or mitogenome Clade 3.

Based on the concordance between mitogenomic clades and nuclear groups (Figures 2 and 4a,b), we define three distinct geographic strata within the short-finned pilot whale species (Figure 4a,b): an Atlantic Ocean stratum, a Naisa stratum (encompassing the western/

central Pacific and Indian Oceans), and a Shiho stratum (occupying the eastern Pacific Ocean with a potentially relic population in northern Japan). Stratifying individual samples based on this hypothesis allows us to use geography as a proxy for genetic assignment in the absence of full mitogenome or nuclear SNP data, so that much larger data sets of mtDNA control region sequences can be used for phylogeographic and taxonomic analysis.

3.2 | Taxonomy and the subspecies hypothesis

We estimated divergence and diagnosability among the three geographic strata using 345 bp of the mtDNA control region, based

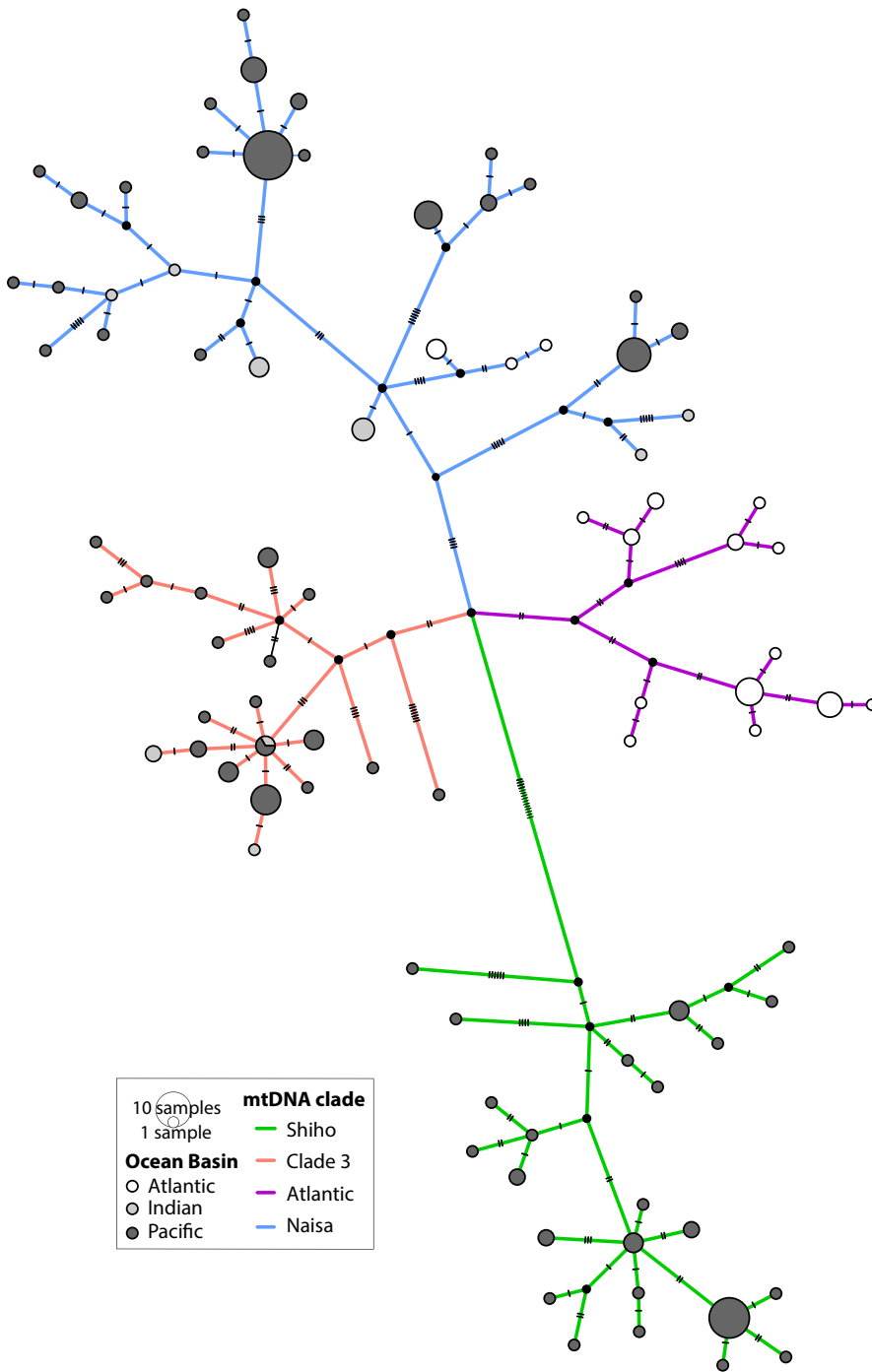
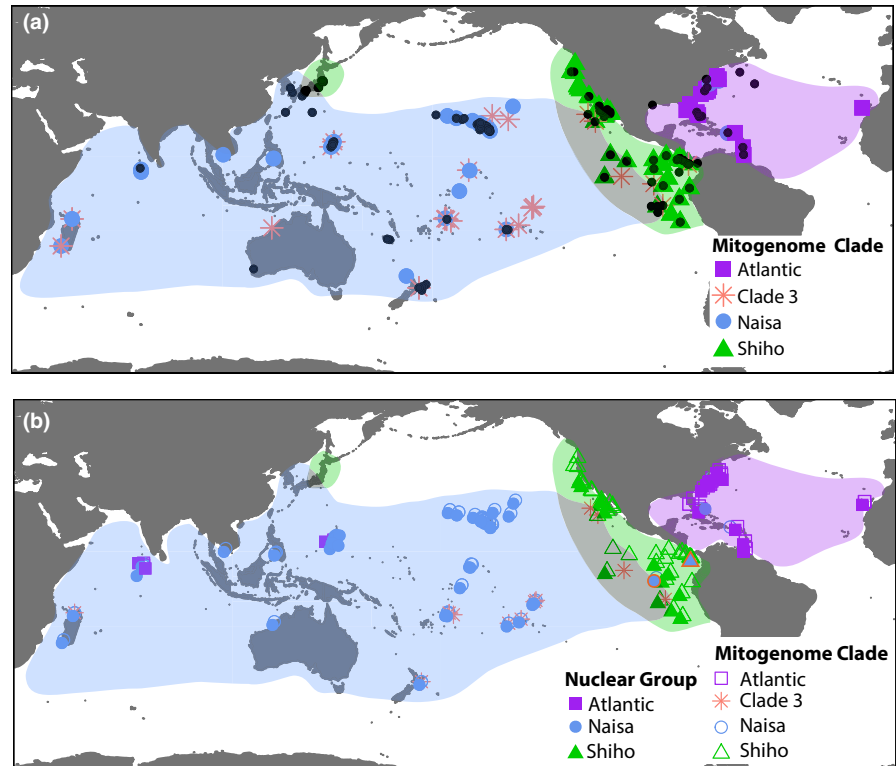


FIGURE 3 Median joining network (MJN) displaying the relationships among whole mitogenome haplotypes by ocean basin and mtDNA clades. Circles are proportional in size to the number of samples with each haplotype. Cross hatches on lines indicate the number of differences between haplotypes. Missing haplotypes are indicated by a black node

on guidelines established to improve subspecies delineation using genetic data (Taylor, Archer, et al., 2017). Those guidelines suggested lower limits for two measures of mtDNA control region differentiation at the subspecies and species boundaries: d_A (0.004, 0.02) and Random Forest Percent Diagnosibility, or PD (95% for both). In addition to these two metrics, we also report Φ_{ST} (Table 2), for which subspecies were found to generally fall between 0.2 and 0.6, but this measure is not recommended for use in the guidelines because it can result in overclassification (Rosel et al., 2017), therefore we did not use it in our taxonomic evaluation.

We examined pairwise net divergence (d_A) and PD of control region sequences for both the nuclear groups ($N = 105$) and the geographic strata ($N = 725$, Table 2). For the smaller data set based on the nuclear groups, the Naisa versus Shiho comparison met the subspecies threshold proposed by Taylor, Archer, et al. (2017) in their guidelines for both metrics ($d_A > 0.004$, PD > 95%). The Atlantic-Shiho nuclear group comparison met the threshold for PD but not d_A , while the Atlantic-Naisa comparison did not meet either threshold. When using the larger data set from the geographically defined strata, both the Naisa versus Shiho geographic strata comparison and the Atlantic versus Shiho geographic strata comparison met the

FIGURE 4 Distributions of (a) four mitogenomic clades (black points represent samples for which we have control region samples but no mitogenome or SNP data), and (b) three nuclear groups (open shapes represent samples for which we have mitogenome but no nuclear data). Two samples in panel b, outlined in red, are the only eastern Pacific Clade 3 samples with nuclear DNA data; one grouped with Naisa, and the other grouped with Shiho. Coloured areas in each panel encompass regions of general geographic concordance between the mitogenome and nuclear data sets, which were used to stratify samples into three regions for the estimation of divergence and differentiation among the three hypothesized types. Grey areas show regions of possible sympatry, or regions of recent or historical introgression between types



subspecies thresholds for both PD and d_A , while the Atlantic versus Naisa geographic strata comparison met the d_A threshold, but not the PD threshold. Using a subsampled data set to control for the potential effects of social structure did not appreciably change the results (Table S5).

Within the STRUCTURE-defined, $K = 2$ nuclear groups (Figure S4), the Naisa/Atlantic nuclear group had 104 private alleles (50%), while the Shiho nuclear group had seven private alleles (4%). In total, 54% of the alleles in the dataset were private to either the Naisa or Shiho nuclear group.

Although not supported by the nuclear SNP analyses, two mitogenomic clades (Naisa and Clade 3; Figures 2 and 3) were found in the western/central Pacific Ocean, with Clade 3 extending into the eastern Pacific Ocean. Using only the control region sequences, differentiation between these two mitogenome clades within the western/central Pacific/IO region met the threshold for subspecies ($d_A = 0.01$, Table 3). We additionally examined control region differentiation between the eastern Pacific Ocean and the western/central Pacific/IO within Clade 3, which was the only clade to span multiple geographic regions, and found significant Φ_{ST} differentiation and high diagnosability (96%), but net divergence did not meet the subspecies threshold.

4 | DISCUSSION

4.1 | Phylogeography

Our results indicate that there are at least three divergent types of short-finned pilot whale throughout their global distribution (Figures

2, 4 and 5). Rather than directly conforming with ocean basins, the three types are distributed predominantly in the Atlantic Ocean (Atlantic type), western/central Pacific and Indian Oceans (Naisa type), and eastern Pacific Ocean (Shiho type). The Shiho clade diverged earliest, approximately 17.5 Kya, corresponding with the last glacial maximum (c. 18 Kya). The Atlantic clade was the next to diverge from Naisa/Clade 3. Although the timing of this split had little support in the mitogenome tree (0.30), it was further supported by nuclear DNA, which did not support a split between the Naisa mitogenome clade and Clade 3.

The distributions of these three types correlate with geographic and oceanographic boundaries that are found among multiple globally-distributed species (Figure 4). The Eastern Pacific Barrier is a known barrier to many shallow, coastally-distributed fishes, corals, and other invertebrates (Bowen et al., 2016; Chow et al., 2011; Rocha et al., 2007). Increasing evidence suggests it may also be an important barrier separating mobile trans-Pacific or globally-distributed species, such as Galapagos sharks (*Carcharhinus galapagensis*) (Pazmiño et al., 2018), tope sharks (*Galeorhinus galeus*) (Chabot, 2015), Risso's dolphins (*Grampus griseus*) (Chen et al., 2018), and spinner dolphins (*Stenella longirostris*) (Leslie & Morin, 2018). Some evidence suggests that the barrier may be semi-permeable to some species (Lessios & Robertson, 2006), allowing occasional migration and mixing between the eastern and western Pacific Ocean. Similarly, the Eastern Pacific Barrier seems to be a semi-permeable barrier between Shiho- and Naisa-type short-finned pilot whales. The exact boundaries of their ranges in this area remain undefined due to lack of data, and it may be a region of occasional geographic overlap or temporal segregation. The

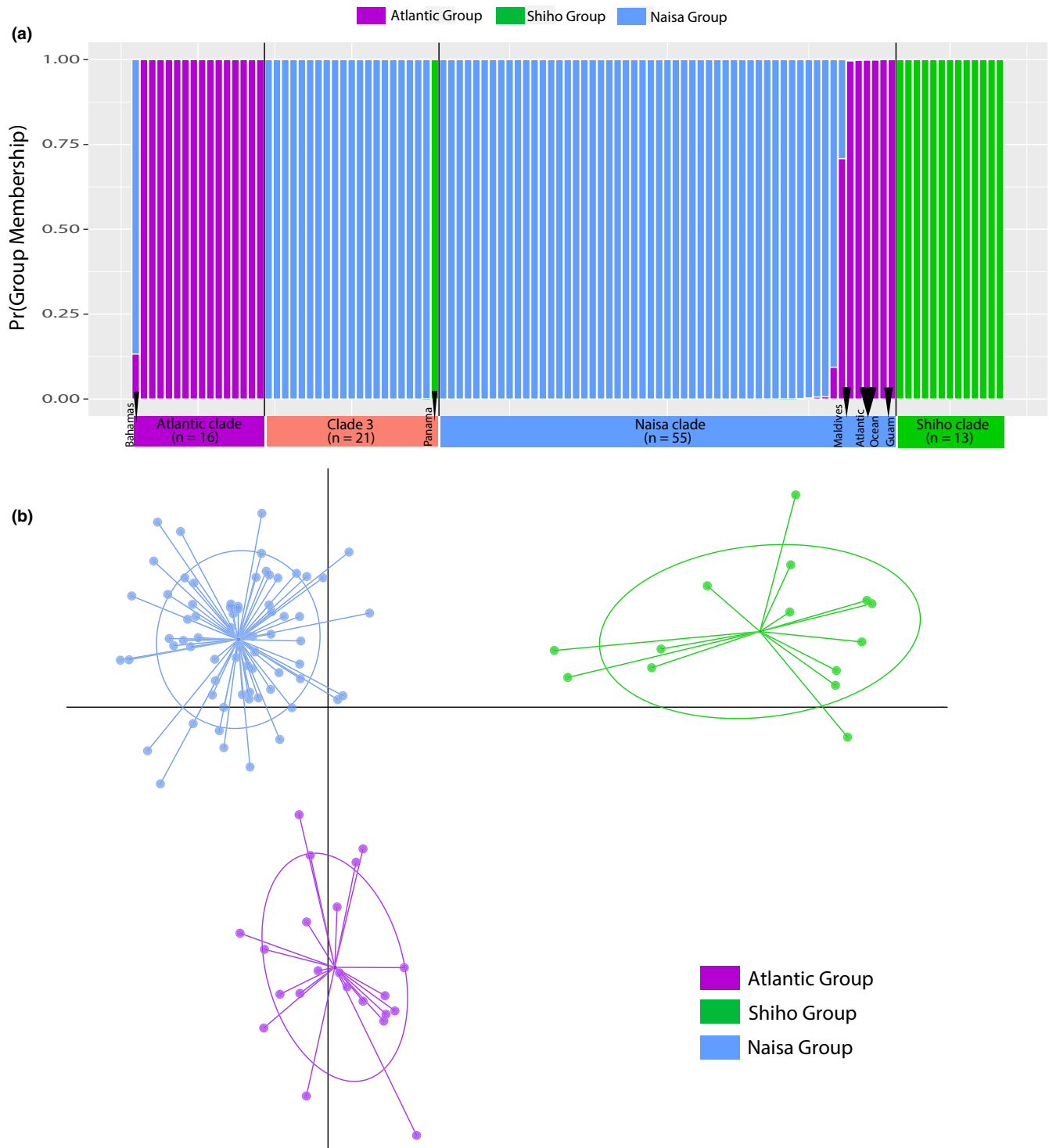


FIGURE 5 (a) Assignment plot based on STRUCTURE analyses, with $k = 3$. Mitogenome clade stratification is on the x-axis, and probability of assignment on the y-axis. (b) Supervised Discriminant Analysis of Principal Components, coloured according to the nuclear groups defined in the STRUCTURE analysis in (a)

species has been found distributed throughout this oligotrophic region (Hamilton et al., 2009), though their density is lower there. The concordance across taxa of isolation and divergence along the East Pacific Barrier indicates this barrier, although not formed by a land mass, may be as important as more obvious barriers in driving evolutionary processes within marine taxa.

The Atlantic type is bordered to the west by the Isthmus of Panama, which separated the Atlantic Ocean from the eastern Pacific Ocean approximately 3.5 Mya (Lessios, 2008), long before the estimated radiation of short-finned pilot whales began. To the east, mixing between the Atlantic and Naisa types is limited by the cold Benguela Current on the southwest side of Africa.

TABLE 2 Estimates of pairwise genetic differentiation between STRUCTURE-derived nuclear groups and geographically-defined hypothesized types

Stratum	F_{ST}	Φ_{ST}	Φ_{ST} p-value	d_A	d_A 95% CI	PD (%)
Control region sequences						
STRUCTURE-derived nuclear group samples only						
Naisa (69) versus Shiho (22)	–	0.32	<0.001	0.004	0.003–0.005	98.75
Atlantic (14) versus Shiho (22)	–	0.10	0.04	0.003	0.002–0.003	96.6
Atlantic (14) versus Naisa (69)	–	–0.01	0.47	0.002	0.001–0.003	73.17
Proposed type						
Naisa (485) versus Shiho (190)	–	0.46	<0.001	0.006	0.005–0.006	97.9
Atlantic (50) versus Shiho (190)	–	0.31	<0.001	0.004	0.003–0.004	99.2
Atlantic (50) versus Naisa (485)	–	0.15	<0.001	0.005	0.004–0.005	82.3
SNPs						
STRUCTURE-derived nuclear group samples only						
Naisa (69) versus Shiho (14)	0.3	–	–	–	–	–
Atlantic (22) versus Shiho (14)	0.4	–	–	–	–	–
Atlantic (22) versus Naisa (69)	0.1	–	–	–	–	–

Note: mtDNA control region differentiation was estimated using Φ_{ST} , net divergence (d_A), and percent diagnosability (PD). The magnitude of nuclear SNP differentiation was estimated using F_{ST} . Sample sizes for each stratum are shown in parentheses. Significant p-values are shown in bold. The lower bounds of the subspecies threshold for d_A and PD are 0.004 and 95%, respectively. The lower bounds of the species threshold for d_A and PD are 0.02 and 95%, respectively.

The long-finned pilot whale, the subarctic sister species to the short-finned pilot whale, inhabits the Benguela Current, while short-finned pilot whales prefer the warmer Agulhas Current, based on stranding records (Findlay, Best, Ross, & Cockcroft, 1992; van Bree, Best, & Ross, 1978). The Benguela Barrier has limited dispersal between the Atlantic and Indian Ocean species for approximately 2.5 My (Dwyer et al., 1995). Similar to the East Pacific Barrier, the Benguela Barrier is semi-permeable, preventing dispersal in temperate mobile species such as whale sharks (Castro et al., 2007), sailfish (Graves & McDowell, 1995) and blue marlins (Buonaccorsi, McDowell, & Graves, 2001), but permitting occasional migrations of tunas and other pelagic fishes (Viñas, Alvarado Bremer, & Pla, 2004). These occasional dispersal events are likely driven by southward incursions of the warm Agulhas Current from the southeast, providing a potential warm-water route for sporadic gene flow between the Atlantic Ocean and western/central Pacific and Indian Oceans (Hutchings et al., 2009). In most species, mixing is to be unidirectional, following the prevailing current westward from the Indian to the Atlantic Ocean (Bowen et al., 2016). Large, globally distributed whales also exhibit restricted gene flow between ocean basins, although they are not restricted to tropical or temperate waters (Baker et al., 1993).

The Indo-Pacific Barrier is a common barrier for many tropical and coastally-distributed species (Bowen et al., 2016), but our data do not show that this is a barrier to gene flow in short-finned pilot whales. It is possible, rather, that the complicated bathymetry in the region provides a rich prey base and habitat for short-finned pilot whales, which are often found along shelf breaks and slopes where

they are thought to hunt deep water squid species. Similarly, we found no evidence of differentiation across the equatorial tropics.

There is evidence of limited historical or continued gene flow between the Atlantic and Naisa types, as well as the Naisa and Shiho types (Figures 2 and 5). Our data support the migration of males and females from the Pacific or Indian Oceans to the Atlantic Ocean; it is possible that males and females migrated separately, but due to their social nature it is likely these animals migrated as social units across the Benguela Barrier. We also found evidence for male migration in the other direction, from the Atlantic Ocean to the western/central Pacific and Indian Oceans. Finally, we found evidence of female migration from the western/central Pacific and Indian Oceans to the eastern Pacific Ocean. Although these samples suggest the potential for historical or ongoing gene flow across barriers, it is important to note that there are several artifacts that might affect genetic clustering. We were able to rule out missing SNPs, high homozygosity, or large numbers of unknown mitogenome nucleotides as potential drivers of nongeographic clustering among samples. Genotype errors may also be caused by potential cross-contamination among samples sequenced in the same lane (Jun et al., 2012), miscalled genotypes, errors introduced during the phasing of genotypes into haplotypes, or errors introduced by the STRUCTURE algorithm (e.g., violation of model assumptions). Because the number of samples indicating gene flow between these types is small, we caution against drawing specific conclusions about gene flow among geographic regions without additional sampling.

Mitogenome Clade 3 was not supported in the nuclear DNA (Table 3 and Figure 5), and its distribution overlaps the Naisa clade throughout its range. In the Mariana Islands, Clade 3 and Naisa

TABLE 3 Estimates of pairwise genetic differentiation among mitogenomic clades within geographic regions with multiple clades, and vice versa. The magnitude of SNP differentiation was estimated using F_{ST} . Mitochondrial control region differentiation was estimated using Φ_{ST} , Nei's d_A , and PD

Strata	F_{ST}	Φ_{ST}	Φ_{ST} p-value	d_A	d_A 95% CI	PD (%)
Control region sequences						
Clades within geographic regions						
W. Pacific/IO: Naisa (398) versus Clade 3 (62)	-	0.03	0.020	0.010	0.009–0.011	99.3
E. Pacific: Shiho (172) versus Clade 3 (17)	-	0.84	<0.001	0.006	0.006–0.006	99.5
Regions within Clades						
Clade 3: E. Pacific (17) versus W. Pacific/Indian Ocean (62)	-	0.73	<0.001	0.002	0.002–0.003	96.0
SNPs						
Clades within geographic regions						
W. Pacific/Indian Ocean: Naisa (52) versus Clade 3 (19)	0.008	-	-	-	-	-

Note: Sample sizes for each stratum are shown in parentheses. Significant values are shown in bold. SNP comparisons with Clade 3 in the eastern Pacific could not be conducted due to small sample size within that region ($n = 2$).

Abbreviations: IO, Indian Ocean; PD, percent diagnosability.

individuals have been found in the same social groups (Hill et al., 2018). Within Clade 3, the eastern Pacific Ocean regions and western/central Pacific and Indian Oceans regions were significantly differentiated, mimicking the patterns seen in the Naisa and Shiho types. These patterns could be caused by historically divergent clades with recent mixing or by lineage sorting within a widely distributed population, and may be better understood with additional nuclear and morphological data from Clade 3.

Genetic phylogeography has often been based on mitochondrial (mtDNA) control region diversity. Yet this single locus can, under certain conditions (e.g., low genetic diversity, large effective population size), misrepresent underlying patterns of isolation, divergence or speciation. Low mtDNA diversity may arise for a number of reasons, including recent population bottlenecks (Hoelzel, Fleischer, Campagna, Alvord, & Le Boeuf, 2002; Morin et al., 2018; Weber, Stewart, & Lehman, 2004), variation in mutation rates across the mitogenome (Aris-Brosou & Excoffier, 1996; Nabholz, Glémin, & Galtier, 2009; Nabholz, Glémin, Galtier, Glémin, & Galtier, 2008), or selection on mtDNA (Foote et al., 2011; Finch, Zhao, Korkin, Frederick, & Eggert, 2014). In some social species, low mtDNA diversity may be caused by cultural hitchhiking, a phenomenon in which mtDNA variation changes through selection on maternally-transmitted cultural traits (Whitehead, 1998). Due to low mtDNA diversity in short-finned pilot whales, the use of additional lines of data (mitogenomes and SNPs) has improved our understanding of phylogeographic patterns and evolutionary divergence within the species.

4.2 | Taxonomy and the subspecies hypothesis

Following the guidelines for subspecies delineation summarized in Figure 3 of Taylor, Archer, et al. (2017), we find support for two subspecies: a Shiho subspecies in the eastern Pacific Ocean, and a

Naisa subspecies encompassing the central/western Pacific and Indian Oceans as well as the Atlantic Ocean. We propose a nominate subspecies, *G. macrorhynchus macrorhynchus*, with the common name “Naisa short-finned pilot whale” (currently called “ma-gondo” in Japan), distributed throughout the central/western Pacific, Indian, and Atlantic Oceans, and an unnamed subspecies with the common name “Shiho short-finned pilot whale” (currently “tappa-naga” in Japan), found in the eastern Pacific Ocean and northern Japan (Figure S5). See the Appendix S2 for further considerations of the proposed common names. The holotype for *G. macrorhynchus macrorhynchus* would be that previously designated for *G. macrorhynchus*.

We recommend the unnamed subspecies be designated according to one of the previously synonymized names for *G. macrorhynchus* (see Appendix S2 for further consideration). *Globicephala scammonii* (Cope, 1869) is likely to be the earliest taxonomic designation for this subspecies, based on morphology and sample location, but this should be confirmed through genetic sequencing. We recommend that the holotypes for *G. macrorhynchus* (U.K. Natural History Museum, Accession #1846.8.9.2), *G. scammonii* (U.S. Natural History Museum, Accession #USNM A 9074), and *G. sieboldii* (Naturalis Biodiversity Centre, Accession #RMNH.MAM.21648) be sequenced and compared with the Shiho and Naisa subspecies to resolve their taxonomic nomenclature.

There are two known regions of potential sympatry and/or introgression between the two subspecies: coastal Japan and the ETP. Off the coast of Japan, the two subspecies are spatio-temporally and ecologically isolated, with the Naisa subspecies using the warmer Kuroshio Current and the Shiho subspecies using the colder Oyashio Current (Kasuya et al., 1988). Less information is available from the ETP. Because of this, we tested mitochondrial control region differentiation between the Naisa and Shiho geographic strata in two ways—we first stratified Clade 3 samples according to geography,

to test the hypothesis of geographically-separated subspecies with some degree of admixture (Table 2). Second, we stratified the Clade 3 samples with the Naisa samples according to their mitogenomic classification, to test the hypothesis of genetically-differentiated subspecies with an area of sympatric distribution in the ETP and no genetic exchange (Table S6). Both stratification schemes support subspecies delimitation.

In addition to control region support, our analysis of nuclear SNPs independently clustered samples into Naisa and Shiho groups. The high proportion of private alleles (54%) indicates that contemporary gene flow between the two strata is very low, or possibly zero (Slatkin, 1985). Although this analysis is representative of the global range of short-finned pilot whales, there are geographic areas where sampling is scant or missing, such as the southern Atlantic Ocean, pelagic Indian Ocean, and the eastern central Pacific Ocean area of potential sympatry.

Additional data from other studies further support this recommendation. Morphological data collected off the coast of Japan show that the Shiho and Naisa types differ in skull shape, body length, and color pattern (Kasuya, 2017; Kasuya et al., 1988; Miyazaki & Amano, 1994). Skull size (length and width) may be considered a diagnostic difference between the two types (Kasuya, 2017; Miyazaki & Amano, 1994), but the limited sample size and geographic coverage outside Japan (Polisini, 1980) prohibit the use of this trait for taxonomic analysis. There is a considerably greater sample size for body length measurements, expanding the range of geographic coverage to include Hawaii and the ETP (Chivers et al., 2018). However, there is some overlap between the two types in the range of body length measurements; therefore body length cannot be considered a diagnostic trait (Cracraft, 1983; De Queiroz, 2007; Helbig, Knox, Parkin, Sangster, & Collinson, 2002; Sites & Marshall, 2004). However, length measurements do indicate a high level of concordance in geographic distribution between morphologically recognized forms and mitochondrial haplotypes (Chivers et al., 2018; Oremus et al., 2009; Polisini, 1980; Van Cise et al., 2016). Where genetic samples have been sequenced from individuals of known morphological form (Japan, Hawaii, and the eastern Pacific Ocean), concordance is 100% between the two (Oremus et al., 2009; Van Cise et al., 2016).

Finally, a few localized studies indicate the potential for additional differences between the two proposed subspecies. Where the two subspecies have allopatric distributions off the coast of Japan, there are differences in their life-history parameters, such as peak mating season (Kasuya, 2017). Similarly, a study of vocal repertoires in the eastern Pacific Shiho subspecies and the Naisa subspecies found in Hawaii indicated acoustic differentiation between the two (Van Cise et al., 2017).

A conservative taxonomic approach requires additional data, particularly from regions of sympatry, supporting complete diagnosability of the two subspecies in order to classify them as distinct species. Although we adhere to this conservative approach to species delimitation within this study, it is important to remember the risk involved in the under-classification of taxonomic units, especially with regard to conservation implications, as well as our

scientific understanding of basic biological and evolutionary processes (Bowen et al., 2016; Daugherty, Cree, Hay, & Thompson, 1990; Leslie, 2015; Mace, 2004). In the case of short-finned pilot whales, and many other cetaceans, the difficulty in obtaining a sufficient data set of morphological or genetic samples covering the entire range of the species may perpetuate taxonomic under-classification, with consequences that range from failing to properly characterize the evolutionary trajectory within a specific taxon or failing to detect recent speciation events, to the extinction of under-classified species and loss of the associated evolutionary potential of that species (Allendorf & Luikart, 2011; Daugherty et al., 1990; Taylor, Perrin, et al., 2017; Wang, Frasier, Yang, & White, 2008). It is therefore our responsibility to consider, as we characterize and classify diversity, the potential for under- or over-classification of certain taxa due to logistical or biological constraints, as well as the trade-offs and consequences that may occur if our classification is not correct. In the case of Naisa and Shiho short-finned pilot whales, we recommend that priority be given to generating nuclear sequence data from areas of potential sympatry or introgression (i.e., coastal Japan and the ETP, see Figure 4), which can be used to assess gene flow and migration between the two taxa and determine whether there is support to formally elevate these two subspecies to species. Alternative methods for collecting morphological data, for example using drone photography to determine body length or melon shape, should also be explored.

Within the Naisa subspecies, two populations in the Atlantic Ocean and central/western Pacific and Indian Oceans may also be sufficiently distinct to be considered subspecies with further sampling. We suggest that delimitation of an Atlantic Ocean subspecies would require additional mitogenomic and nuclear data, or expanded morphological analyses, from the Atlantic and Indian Oceans.

ACKNOWLEDGEMENTS

We are grateful to the many people and organizations who collected and contributed samples for this study, and specifically to: Jooke Robbins, Provincetown Center for Coastal Studies; Jay Barlow, Susan Chivers, Tim Gerodette, Lisa Ballance, Robert Pitman, Louella Dolar, Marine Mammal and Sea Turtle Research (MMASTR) Collection, SWFSC; Tony Martinez and field crews of the NOAA Ship Gordon Gunter, SEFSC and Delaware II, NEFSC; Jeff Jacobsen, Humboldt State University; Natacha Aguilar Soto, Emma Carroll, Scottish Oceans Institute, University of St. Andrews; Kenny Travouillon & Rebecca Bray, Western Australian Museum; Charles Anderson, Marine Research Section, Ministry of Fisheries and Agriculture, Republic of the Maldives; Isabel Beasley, James Cook University. Leigh Hickmott and John Durban collected samples contributed by the Bahamas Marine Mammal Research Organization. Samples were collected under the following permits: NMFS MMPA permit 774-1714 issued to the SWFSC and CNMI-DFW permit, license No. 01721-10 (2010 samples); NMFS MMPA permit 14097 issued to the SWFSC and CNMI-DFW permit, license No. 02260-11 (2011 samples); NMFS MMPA permit 15240 issued to PIFSC and CNMI-DFW permit, license

Nos. 02444-12 and 02694-13 (2012 and 2013 samples). We thank NOAA's SWFSC Marine Mammal Genetics Group, especially Kelly Robertson, Gabriela Serra-Valente, and Vicki Pease for the curation and processing of samples used in this study. Samples provided by C.S. Baker were curated by Debbie Steel in Oregon and Rochelle Constantine in Auckland. We thank Bill Perrin and Bob Brownell for their expert advice regarding the taxonomic interpretation of results from this study. Funding for this project was provided by Commander, U.S. Pacific Fleet Environmental Readiness Division and NMFS Pacific Islands Fisheries Science Center; NMFS West Coast Region; Scripps Institution of Oceanography Edna Bailey Sussman Research Fellowship; and Woods Hole Oceanographic Institution.

AUTHOR CONTRIBUTIONS

A.M.V.C. contributed to research design, laboratory analyses, data analysis, and paper writing. P.A.M. contributed to research design and paper writing. Samples integral to the study were contributed by R.W.B., C.S.B., S.C., D.C., R.F., J.M., K.K.M., A.A.M.G., E.M.O., M.O., M.M.P., P.E.R., and B.L.T., all of whom also read and provided feedback on manuscript drafts. B.H.H. contributed to laboratory analyses and manuscript editing. Significant editorial contributions were made by C.S.B., K.K.M., P.E.R., and B.L.T.

DATA ACCESSIBILITY

All mitogenome, control region, and nuclear sequences are archived at NCBI GenBank. Mitogenome accession numbers are MK790686–MK790782. Control region accession numbers are FJ513329–FJ513341, KM624040–KM624062, DQ145032, and MH425574. Nuclear sequence accession numbers are MG023261–MG023309. SNP data are archived in the Dryad data repository: <https://doi.org/10.5061/dryad.78521>.

ORCID

Amy M. Van Cise  <https://orcid.org/0000-0002-0613-4072>

Phillip A. Morin  <https://orcid.org/0000-0002-3279-1519>

REFERENCES

- Allendorf, F. W., & Luikart, G. (2011). *Conservation and the genetics of populations*. Malden, MA: Blackwell Publishing Ltd.
- Alves, F., Quérouil, S., Dinis, A., Nicolau, C., Ribeiro, C., Freitas, L., ... Fortuna, C. (2013). Population structure of short-finned pilot whales in the oceanic archipelago of Madeira based on photo-identification and genetic analyses: Implications for conservation. *Aquatic Conservation: Marine and Freshwater Ecosystems*, 23(5), 758–776. <https://doi.org/10.1002/aqc.2332>
- Andrews, K. R., Karczmarski, L., Au, W. W. L., Rickards, S. H., Vanderlip, C. A., Bowen, B. W., ... Toonen, R. J. (2010). Rolling stones and stable homes: Social structure, habitat diversity and population genetics of the Hawaiian spinner dolphin (*Stenella longirostris*). *Molecular Ecology*, 19(4), 732–748. <https://doi.org/10.1111/j.1365-294X.2010.04521.x>
- Archer, F. I., Adams, P. E., & Schneiders, B. B. (2017). stratag: An R package for manipulating, summarizing and analysing population genetic data. *Molecular Ecology Resources*, 17(1), 5–11. <https://doi.org/10.1111/1755-0998.12559>
- Archer, F. I., Martien, K. K., & Taylor, B. L. (2017). Diagnosability of MtDNA with random forests: Using sequence data to delimit subspecies. *Marine Mammal Science*, 33, 101–131. <https://doi.org/doi.org/10.1111/mms.12414>.
- Aris-Brosou, S., & Excoffier, L. (1996). The impact of population expansion DNA and mutation rate heterogeneity on DNA sequence polymorphism. *Molecular Biology and Evolution*, 13(3), 494–504.
- Armstrong, R. A. (2014). When to use the Bonferroni correction. *Ophthalmic and Physiological Optics*, 34(5), 502–508. <https://doi.org/doi.org/10.1111/opo.12131>
- Baker, C. S., Perry, A., Bannister, J. L., Weinrich, M. T., Abernethy, R. B., Calambokidis, J., ... Vasquez, O. (1993). Abundant mitochondrial DNA variation and world-wide population structure in humpback whales. *Proceedings of the National Academy of Sciences of the United States of America*, 90(17), 8239–8243. <https://doi.org/10.1073/PNAS.90.17.8239>
- Balcazar, N. E., Tripovich, J. S., Klinck, H., Nieukirk, S. L., Mellinger, D. K., Dziak, R. P., & Rogers, T. L. (2015). Calls reveal population structure of blue whales across the southeast Indian Ocean and southwest Pacific Ocean. *Journal of Mammalogy*, 96(6), 1184–1193. <https://doi.org/10.1093/jmammal/gyv126>
- Bandelt, H. J., Forster, P., & Röhl, A. (1999). Median-joining networks for inferring intraspecific phylogenies. *Molecular Biology and Evolution*, 16(1), 37–48. <https://doi.org/10.1093/oxfordjournals.molbev.a026036>
- Bowen, B. W., Gaither, M. R., DiBattista, J. D., Iacchi, M., Andrews, K. R., Grant, W. S., ... Briggs, J. C. (2016). Comparative phylogeography of the ocean planet. *Proceedings of the National Academy of Sciences*, 113(29), 7962–7969. <https://doi.org/10.1073/pnas.1602404113>
- Buonaccorsi, V. P., McDowell, J. R., & Graves, J. E. (2001). Reconciling patterns of inter-ocean molecular variance from four classes of molecular markers in blue marlin (*Makaira nigricans*). *Molecular Ecology*, 10(5), 1179–1196. <https://doi.org/10.1046/j.1365-294X.2001.01270.x>
- Cammen, K. M., Andrews, K. R., Carroll, E. L., Foote, A. D., Humble, E., Khudyakov, J. I., ... Van Cise, A. M. (2016). Genomic methods take the plunge: Recent advances in high-throughput sequencing of marine mammals. *Journal of Heredity*, 107(6), 481–495. <https://doi.org/10.1093/jhered/esw044>
- Carroll, E. L., Baker, C. S., Watson, M., Alderman, R., Bannister, J., Gaggiotti, O. E., ... Harcourt, R. (2015). Cultural traditions across a migratory network shape the genetic structure of southern right whales around Australia and New Zealand. *Scientific Reports*, 5(1), 16182. <https://doi.org/10.1038/srep16182>
- Castro, A. L. F., Stewart, B. S., Hueter, R. E., Meekan, M. G., Motta, P. J., Bowen, B. W., & Karl, S. A. (2007). Population genetic structure of Earth's largest fish, the whale shark (*Rhincodon typus*). *Molecular Ecology*, 16(24), 5183–5192. <https://doi.org/10.1111/j.1365-294X.2007.03597.x>
- Chabot, C. L. (2015). Microsatellite loci confirm a lack of population connectivity among globally distributed populations of the tope shark *Galeorhinus galeus* (Triakidae). *Journal of Fish Biology*, 87(2), 371–385. <https://doi.org/10.1111/jfb.12727>
- Chen, I., Nishida, S., Chou, L.-S., Tajima, Y., Yang, W.-C., Isobe, T., ... Hoelzel, A. R. (2018). Concordance between genetic diversity and marine biogeography in a highly mobile marine mammal, the Risso's dolphin. *Journal of Biogeography*, 45, 2092–2103. <https://doi.org/10.1111/jbi.13360>
- Chen, I., Yu, H., Yang, W., Nishida, S., Isobe, T., & Tanabe, S. (2014). The “Southern form” of short-finned pilot whale (*Globicephala macrorhynchus*) in tropical west Pacific Ocean off Taiwan. *Raffles Bulletin of Zoology*, 62, 188–199.
- Chivers, S. J., Perryman, W. L., Lynn, M. S., West, K., & Brownell, R. L. (2018). “Northern” form short-finned pilot whales (*Globicephala*

- macrorhynchus*) inhabit the eastern tropical Pacific Ocean. *Aquatic Mammals*, 44(4), 357–366. <https://doi.org/10.1578/AM.44.4.2018.357>
- Chow, S., Jeffs, A., Miyake, Y., Konishi, K., Okazaki, M., Suzuki, N., ... Sakai, M. (2011). Genetic isolation between the Western and Eastern Pacific populations of pronghorn spiny lobster *Panulirus penicillatus*. *PLoS ONE*, 6(12), e29280. <https://doi.org/10.1371/journal.pone.0029280>
- Cracraft, J. (1983). Species concepts and speciation analysis. In Johnston R. F. (ed) *Current ornithology* (Vol. 1). Boston, MA: Springer.
- Darriba, D., Taboada, G., Doallo, R., & Posada, D. (2012). jModelTest 2: More models, new heuristics and parallel computing. *Nature Methods*, 9(8), 772. <https://doi.org/10.1038/nmeth.2109>
- Daugherty, C. H., Cree, A., Hay, J. M., & Thompson, M. B. (1990). Neglected taxonomy and continuing extinctions of tuatara (*Sphenodon*). *Nature*, 347(6289), 177–179. <https://doi.org/10.1038/347177a0>
- Davies, J. L. (1963). The antitropical factor in cetacean speciation. *Evolution*, 17(1), 107–116. [https://doi.org/10.1016/0011-7471\(64\)90215-3](https://doi.org/10.1016/0011-7471(64)90215-3)
- De Queiroz, K. (2007). Species concepts and species delimitation. *Systematic Biology*, 56(6), 879–886. <https://doi.org/10.1080/10635150701701083>
- Drummond, A. J., Suchard, M. A., Xie, D., & Rambaut, A. (2012). Bayesian phylogenetics with BEAUti and the BEAST 1.7. *Molecular Biology and Evolution*, 29(8), 1969–1973. <https://doi.org/10.1093/molbev/mss075>
- Dwyer, G. S., Cronin, T. M., Baker, P. A., Raymo, M. E., Buzas, J. S., & Corrège, T. (1995). North Atlantic deepwater temperature change during late Pliocene and late quaternary climatic cycles. *Science*, 270(5240), 1347–1351. <https://doi.org/10.1126/science.270.5240.1347>
- Evanno, G., Regnaut, S., & Goudet, J. (2005). Detecting the number of clusters of individuals using the software STRUCTURE: A simulation study. *Molecular Ecology*, 14(8), 2611–2620. <https://doi.org/10.1111/j.1365-294X.2005.02553.x>
- Finch, T. M., Zhao, N., Korkein, D., Frederick, K. H., & Eggert, L. S. (2014). Evidence of positive selection in mitochondrial complexes I and V of the African elephant. *PLoS ONE*, 9(4), e92587. <https://doi.org/10.1371/journal.pone.0092587>
- Findlay, K. P., Best, P. B., Ross, G. J. B., & Cockcroft, V. G. (1992). The distribution of small odontocete cetaceans off the coasts of South Africa and Namibia. *South African Journal of Marine Science*, 12(1), 237–270. <https://doi.org/10.2989/02577619209504706>
- Foote, A. D., Morin, P. A., Durban, J. W., Pitman, R. L., Wade, P., Willerslev, E., ... da Fonseca, R. R. (2011). Positive selection on the killer whale mitogenome. *Biology Letters*, 7(1), 116–118. <https://doi.org/10.1098/rsbl.2010.0638>
- Foote, A. D., Vijay, N., Avila-Arcos, M., Baird, R., Durban, J., Morin, P., ... Wolf, J. (2016). Genome-culture coevolution promotes rapid divergence in the killer whale. *Nature Communications*, 7(11693), 1–12. <https://doi.org/10.1101/040295>
- Fountain, E. D., Pauli, J. N., Reid, B. N., Palsbøll, P. J., & Peery, M. Z. (2016). Finding the right coverage: The impact of coverage and sequence quality on single nucleotide polymorphism genotyping error rates. *Molecular Ecology Resources*, 16(4), 966–978. <https://doi.org/10.1111/1755-0998.12519>
- Gaither, M. R., Bowen, B. W., Rocha, L. A., & Briggs, J. C. (2016). Fishes that rule the world: Circumtropical distributions revisited. *Fish and Fisheries*, 17(3), 664–679. <https://doi.org/10.1111/faf.12136>
- Garrick, R. C., Sunnucks, P., & Dyer, R. J. (2010). Nuclear gene phylogeography using PHASE: Dealing with unresolved genotypes, lost alleles, and systematic bias in parameter estimation. *BMC Evolutionary Biology*, 10(1), 118. <https://doi.org/10.1186/1471-2148-10-118>
- Graves, J. E., & McDowell, J. R. (1995). Inter-ocean genetic divergence of istiophorid billfishes. *Marine Biology*, 122(2), 193–203. <https://doi.org/10.1007/BF00348932>
- Guindon, S., & Gascuel, O. (2003). A simple, fast and accurate method to estimate large phylogenies by maximum-likelihood. *Systematic Biology*, 52, 696–704.
- Hamilton, T. A., Redfern, J. V., Barlow, J., Ballance, L. T., Gerrodette, T., Holt, R. S., Taylor, B. L. (2009). *Atlas of cetacean sightings for Southwest Fisheries Science Center cetacean and ecosystem surveys: 1986–2005*. NOAA Technical Memorandum NOAA-TM-NMFS-SWFSC-440 U.S. (NOAA-NMFS, Ed.).
- Hamner, R. M., Oremus, M., Stanley, M., Brown, P., Constantine, R., & Baker, C. S. (2012). *Estimating the abundance and effective population size of Maui's dolphins using microsatellite genotypes in 2010–11, with retrospective matching to 2001–07* (p. 44). Auckland, New Zealand: Department of Conservation.
- Hancock-Hanser, B. L., Frey, A., Leslie, M. S., Dutton, P. H., Archer, F. I., & Morin, P. A. (2013). Targeted multiplex next-generation sequencing: Advances in techniques of mitochondrial and nuclear DNA sequencing for population genomics. *Molecular Ecology Resources*, 13(2), 254–268. <https://doi.org/10.1111/1755-0998.12059>
- Hasegawa, M., Kishino, H., & Yano, T. A. (1985). Dating of the human–ape splitting by a molecular clock of mitochondrial DNA. *Journal of Molecular Evolution*, 22(2), 160–174. <https://doi.org/10.1007/BF02101694>
- Helbig, A. J., Knox, A. G., Parkin, D. T., Sangster, G., & Collinson, M. (2002). Guidelines for assigning species rank. *Ibis*, 144(3), 518–525. <https://doi.org/10.1046/j.1474-919X.2002.00091.x>
- Hill, M. C., Bendlin, A. R., Van Cise, A. M., Milette-Winfree, A., Ligon, A. D., Ü, A. D., ... Oleson, E. M. (2018). Short-finned pilot whales (*Globicephala macrorhynchus*) of the Mariana Archipelago: Individual affiliations, movements, and spatial use. *Marine Mammal Science*, <https://doi.org/10.1111/mms.12567>
- Hill, M. C., Oleson, E. M., Ligon, A. D., Martien, K. K., Archer, F. I., Baumann-Pickering, S., Woodman, S. M. (2015). *Cetacean monitoring in the Mariana Islands Range Complex, 2014*. Prepared for the U.S. Pacific Fleet Environmental Readiness Office. PIFSC Data Report DR-15-003.
- Hoelzel, A. R., Fleischer, R. C., Campagna, C., Alvord, G., & Le Boeuf, B. J. (2002). Impact of a population bottleneck on symmetry and genetic diversity in the northern elephant seal (*Mirounga angustirostris*). *Journal of Evolutionary Biology*, 15, 567–575. <https://doi.org/10.1046/j.1420-9101.2002.00419.x>
- Hutchings, L., van der Lingen, C. D., Shannon, L. J., Crawford, R., Verheye, H., Bartholomae, C. H., ... Monteiro, P. (2009). The Benguela current: An ecosystem of four components. *Progress in Oceanography*, 53(1–4), 15–32. <https://doi.org/10.1016/j.pocean.2009.07.046>
- Jakobsson, M., & Rosenberg, N. A. (2007). CLUMPP: A cluster matching and permutation program for dealing with label switching and multimodality in analysis of population structure. *Bioinformatics*, 23(14), 1801–1806. <https://doi.org/10.1093/bioinformatics/btm233>
- Jombart, T. (2008). adegenet: A R package for the multivariate analysis of genetic markers. *Bioinformatics*, 24(11), 1403–1405. <https://doi.org/10.1093/bioinformatics/btn129>
- Jombart, T., & Ahmed, I. (2011). adegenet 1.3-1: New tools for the analysis of genome-wide SNP data. *Bioinformatics*, 27(21), 3070–3071. <https://doi.org/10.1093/bioinformatics/btr521>
- Jun, G., Flickinger, M., Hetrick, K. N., Romm, J. M., Doheny, K. F., Abecasis, G. R., ... Kang, H. M. (2012). Detecting and estimating contamination of human DNA samples in sequencing and array-based genotype data. *The American Journal of Human Genetics*, 91(5), 839–848. <https://doi.org/10.1016/j.ajhg.2012.09.004>
- Kasuya, T. (2017). *Small cetaceans of Japan: Exploitation and biology*. Boca Raton, FL: CRC Press Inc.
- Kasuya, T., Miyashita, T., & Kasamatsu, F. (1988). Segregation of two forms of short-finned pilot whales off the Pacific coast of Japan. *The Scientific Reports of the Whales Research Institute*, 39, 77–90.

- Kingman, J. F. C. (1982). The coalescent. *Stochastic Processes and their Applications*, 13(3), 235–248. [https://doi.org/10.1016/0304-4149\(82\)90011-4](https://doi.org/10.1016/0304-4149(82)90011-4)
- Kircher, M., Sawyer, S., & Meyer, M. (2012). Double indexing overcomes inaccuracies in multiplex sequencing on the Illumina platform. *Nucleic Acids Research*, 40(1), e3. <https://doi.org/10.1093/nar/gkr771>
- Leigh, J. W., & Bryant, D. (2015). popart: Full-feature software for haplotype network construction. *Methods in Ecology and Evolution*, 6(9), 1110–1116. <https://doi.org/10.1111/2041-210X.12410>
- Leslie, M. S. (2015). Impacts of phylogenetic nomenclature on the efficacy of the U.S. Endangered Species Act. *Conservation Biology*, 29(1), 69–77. <https://doi.org/10.1111/cobi.12375>
- Leslie, M. S., & Morin, P. A. (2016). Using genome-wide SNPs to detect structure in high-diversity and low-divergence populations of severely impacted Eastern Tropical Pacific Spinner (*Stenella longirostris*) and Pantropical Spotted Dolphins (*S. attenuata*). *Frontiers in Marine Science*, 3, 1–12. <https://doi.org/10.3389/fmars.2016.00253>
- Leslie, M. S., & Morin, P. A. (2018). Structure and phylogeography of two tropical predators, spinner (*Stenella longirostris*) and pantropical spotted (*S. attenuata*) dolphins, from SNP data. *Royal Society Open Science*, 5, 171615.
- Lessios, H. A. (2008). The Great American Schism: Divergence of marine organisms after the rise of the Central American Isthmus. *Annual Review of Ecology, Evolution, and Systematics*, 39(1), 63–91. <https://doi.org/10.1146/annurev.ecolsys.38.091206.095815>
- Lessios, H. A., & Robertson, D. R. (2006). Crossing the impassable: Genetic connections in 20 reef fishes across the eastern Pacific barrier. *Proceedings. Biological Sciences*, 273(1598), 2201–2208. <https://doi.org/10.1098/rspb.2006.3543>
- Li, H., & Durbin, R. (2009). Fast and accurate short read alignment with Burrows-Wheeler transform. *Bioinformatics*, 25(14), 1754–1760. <https://doi.org/10.1093/bioinformatics/btp324>
- Mace, G. M. (2004). The role of taxonomy in species conservation. *Philosophical Transactions of the Royal Society of London. Series B, Biological Sciences*, 359(1444), 711–719. <https://doi.org/10.1098/rstb.2003.1454>
- Mahaffy, S. D., Baird, R. W., McSweeney, D. J., Webster, D. L., & Schorr, G. S. (2015). High site fidelity, strong associations, and long-term bonds: Short-finned pilot whales off the island of Hawai'i. *Marine Mammal Science*, 31(4), 1427–1451. <https://doi.org/10.1111/mms.12234>
- Martien, K. K., Chivers, S. J., Baird, R. W., Archer, F. I., Gorgone, A. M., Hancock-Hanser, B. L., ... Taylor, B. L. (2014). Nuclear and mitochondrial patterns of population structure in North Pacific False killer whales (*Pseudorca crassidens*). *Journal of Heredity*, 105, 611–626. <https://doi.org/10.5061/dryad.2pq32>
- Martien, K. K., Hill, M. C., Van Cise, A. M., Roberston, K. M., Woodman, S. M., Dolar, L., Oleson, E. M. (2014). Genetic diversity and population structure in four species of cetaceans around the Mariana Islands. In (Vol. NMFS-SWFSC, pp. 14). La Jolla, CA: SWFSC.
- Miyazaki, N., & Amano, M. (1994). Skull morphology of two forms of short-finned pilot whales off the Pacific coast of Japan. *Reports of the International Whaling Commission*, 44, 499–508.
- Morin, P. A., Archer, F. I., Pease, V. L., Hancock-hanser, B. L., Kelly, M., Huebinger, R. M., ... Taylor, B. L. (2012). An empirical comparison of SNPs and microsatellites for population structure, assignment, and demographic analyses of bowhead whale populations. *Endangered Species Research*, 19(2), 1–27. <https://doi.org/10.3354/esr00459>
- Morin, P. A., Foote, A. D., Baker, C. S., Hancock-Hanser, B. L., Kaschner, K., Mate, B. R., ... Alexander, A. (2018). Demography or selection on linked cultural traits or genes? Investigating the driver of low mtDNA diversity in the sperm whale using complementary mitochondrial and nuclear genome analyses. *Molecular Ecology*, 27(11), 2604–2619. <https://doi.org/10.1111/mec.14698>
- Morin, P. A., Parsons, K. M., Archer, F. I., Ávila-Arcos, M. C., Barrett-Lennard, L. G., Dalla Rosa, L., ... Foote, A. D. (2015). Geographical and temporal dynamics of a global radiation and diversification in the killer whale. *Molecular Ecology*, 24(15), 3964–3979. <https://doi.org/10.1111/mec.13284>
- Nabholz, B., Glémin, S., & Galtier, N. (2009). The erratic mitochondrial clock: Variations of mutation rate, not population size, affect mtDNA diversity across birds and mammals. *BMC Evolutionary Biology*, 9(1), 1–13. <https://doi.org/10.1186/1471-2148-9-54>
- Nabholz, B., Glémin, S., Galtier, N., Glémin, S., & Galtier, N. (2008). Strong variations of mitochondrial mutation rate across mammals – The longevity hypothesis. *Molecular Biology and Evolution*, 25(1), 120–130. <https://doi.org/10.1093/molbev/msm248>
- Nei, M. (1987). *Molecular evolutionary genetics*. New York, NY: Columbia University Press.
- Oremus, M., Gales, R., Dalebout, M. L., Funahashi, N., Endo, T., Kage, T., ... Baker, S. C. (2009). Worldwide mitochondrial DNA diversity and phylogeography of pilot whales (*Globicephala* spp.). *Biological Journal of the Linnean Society*, 98, 729–744. <https://doi.org/10.1111/j.1095-8312.2009.01325.x>
- Pazmiño, D. A., Maes, G. E., Green, M. E., Simpfendorfer, C. A., Hoyos-Padilla, E. M., Duffy, C. J. A., ... van Herwerden, L. (2018). Strong trans-Pacific break and local conservation units in the Galapagos shark (*Carcharhinus galapagensis*) revealed by genome-wide cytonuclear markers. *Heredity*, 120(5), 407–421. <https://doi.org/10.1038/s41437-017-0025-2>
- Perneger, T. V. (1998). What's wrong with Bonferroni adjustments. *BMJ*, 316(7139), 1236–1238. <https://doi.org/10.1136/bmj.316.7139.1236>
- Perrin, W. F. (2007). *The South African species gate*. La Jolla, CA: NMFS Southwest Fisheries Science Center.
- Podos, J. (2010). Acoustic discrimination of sympatric morphs in Darwin's finches: A behavioural mechanism for assortative mating? *Philosophical Transactions of the Royal Society of London. Series B, Biological Sciences*, 365(1543), 1031–1039. <https://doi.org/10.1098/rstb.2009.0289>
- Polisini, J. (1980). *A comparison of Globicephala macroryncha (Gray, 1846) with the pilot whale of the North Pacific Ocean: An analysis of the skull of the broad-rostrum pilot whales of the genus Globicephala*. PhD Thesis, University of Southern California, Los Angeles, CA.
- Pritchard, J. K., Stephens, M., & Donnelly, P. (2000). Inference of population structure using multilocus genotype data. *Genetics*, 155(2), 945–959.
- R Core Team (2016). *R: A language and environment for statistical computing*. Vienna, Austria: R Core Team.
- Rambout, A., Suchard, M., Xie, D., & Drummond, A. (2014). *Tracer v1.6*. Retrieved from <http://tree.bio.ed.ac.uk/software/tracer/>
- Rendell, L., Mesnick, S. L., Dalebout, M. L., Burtenshaw, J., & Whitehead, H. (2012). Can Genetic Differences Explain Vocal Dialect Variation in Sperm Whales, *Physeter macrocephalus*? *Behavior Genetics*, 42(2), 332–343. <https://doi.org/10.1007/s10519-011-9513-y>
- Rocha, L. A., Craig, M. T., & Bowen, B. W. (2007). Phylogeography and the conservation of coral reef fishes. *Coral Reefs*, 26(3), 501–512. <https://doi.org/10.1007/s00338-007-0261-7>
- Rosel, P. E., Hancock-hanser, B. L., Archer, F. I., Robertson, K. M., Martien, K. K., Leslie, M. S., ... Taylor, B. L. (2017). Examining metrics and magnitudes of molecular genetic differentiation used to delimit cetacean subspecies based on mitochondrial DNA control region sequences. *Marine Mammal Science*, 33(51), 76–100. <https://doi.org/10.1111/mms.12410>
- Sites, J. W., & Marshall, J. C. (2004). Operational criteria for delimiting species. *Annual Review of Ecology, Evolution, and Systematics*, 35(1), 199–227. <https://doi.org/10.1146/annurev.ecolsys.35.112202.130128>
- Slatkin, M. (1985). Rare alleles as indicators of gene flow. *Evolution*, 39(1), 53–65. <https://doi.org/10.2307/2408516>
- Smith, A. L., & Friesen, V. L. (2007). Differentiation of sympatric populations of the band-rumped storm-petrel in the Galapagos Islands: An examination of genetics, morphology, and vocalizations. *Molecular Ecology*, 16(8), 1593–1603. <https://doi.org/10.1111/j.1365-294X.2006.03154.x>

- Stephens, M., & Donnelly, P. (2003). A comparison of Bayesian methods for haplotype reconstruction from population genotype data. *American Journal of Human Genetics*, 73(2002), 1162–1169. <https://doi.org/10.1086/379378>
- Tamura, K., & Nei, M. (1993). Estimation of the number of nucleotide substitutions in the control region of mitochondrial DNA in humans and chimpanzees. *Molecular Biology and Evolution*, 10(3), 512–526.
- Taylor, B. L., Archer, F. I., Martien, K. K., Rosel, P. E., Hancock-Hanser, B. L., Lang, A. R., ... Baker, C. S. (2017). Guidelines and quantitative standards to improve consistency in cetacean subspecies and species delimitation relying on molecular genetic data. *Marine Mammal Science*, 33(S1), 132–155. <https://doi.org/10.1111/mms.12411>
- Taylor, B. L., Perrin, W. F., Reeves, R. R., Rosel, P. E., Wang, J. Y., Cipriano, F., ... Brownell, R. L. (2017). Why we should develop guidelines and quantitative standards for using genetic data to delimit subspecies for data-poor organisms like cetaceans. *Marine Mammal Science*, 33(S1), 12–26. <https://doi.org/10.1111/mms.12413>
- van Bree, P. J. H., Best, B. B., & Ross, G. J. B. (1978). Occurrence of the two species of pilot whales (genus *Globicephala*) on the coast of South Africa. *Mammalia*, 42(1872), 323–328.
- Van Cise, A. M., Martien, K. K., Mahaffy, S. D., Baird, R. W., Webster, D. L., Fowler, J. H., ... Morin, P. A. (2017). Familial social structure and socially driven genetic differentiation in Hawaiian short-finned pilot whales. *Molecular Ecology*, 26(23), 6730–6741. <https://doi.org/10.1111/mec.14397>
- Van Cise, A. M., Morin, P. A., Baird, R. W., Lang, A. R., Robertson, K. M., Chivers, S. J., ... Martien, K. K. (2016). Redrawing the map: mtDNA provides new insight into the distribution and diversity of short-finned pilot whales in the Pacific Ocean. *Marine Mammal Science*, 32(4), 1177–1199. <https://doi.org/10.1111/mms.12315>
- Van Cise, A. M., Morin, P. A., Baird, R. W., Oleson, E. M., Martien, K. K. (2016). *Relatedness and genetic structure in island-associated and pelagic short-finned pilot whales*. Appendix in Hill et al. 2016. Cetacean Monitoring in the Mariana Islands Range Complex, 2015. Prepared for the U.S. Pacific Fleet Environmental Readiness Office.
- Van Cise, A. M., Roch, M. A., Baird, R. W., Mooney, T. A., & Barlow, J. (2017). Acoustic differentiation of Shiho- and Naisa-type short-finned pilot whales in the Pacific Ocean. *The Journal of the Acoustical Society of America*, 141(2), 737–748. <https://doi.org/10.1121/1.4974858>
- Verity, R., Nichols, R. A., Baele, G., Lemey, P., Bedford, T., Rambaut, A., ... Wright, S. (2016). Estimating the number of subpopulations (K) in structured populations. *Genetics*, 203(4), 367–374. <https://doi.org/10.1534/genetics.115.180992>
- Viñas, J., Alvarado Bremer, J. R., & Pla, C. (2004). Inter-oceanic genetic differentiation among albacore (*Thunnus alalunga*) populations. *Marine Biology*, 145(2), 225–232. <https://doi.org/10.1007/s00227-004-1319-5>
- Wang, J. Y., Frasier, T. R., Yang, S. C., & White, B. N. (2008). Detecting recent speciation events: The case of the finless porpoise (genus *Neophocaena*). *Heredity*, 101(2), 145–155. <https://doi.org/10.1038/hdy.2008.40>
- Warren, D. L., Geneva, A. J., & Lanfear, R. (2017). RWTY (R We There Yet): An R package for examining convergence of Bayesian phylogenetic analyses. *Molecular Biology and Evolution*, 34(4), 1016–1020. <https://doi.org/10.1093/molbev/msw279>
- Weber, D. S., Stewart, B. S., & Lehman, N. (2004). Genetic consequences of a severe population bottleneck in the Guadalupe fur seal (*Arctocephalus townsendi*). *Journal of Heredity*, 95(2), 144–153. <https://doi.org/10.1093/jhered/esh018>
- Whitehead, H. (1998). Cultural selection and genetic diversity in matrilineal whales. *Science*, 282(5394), 1708–1711. <https://doi.org/10.1126/science.282.5394.1708>
- Witteveen, B. H., Straley, J. M., Chenoweth, E., Baker, C. S., Barlow, J., Matkin, C., ... Hirons, A. (2011). Using movements, genetics and trophic ecology to differentiate inshore from offshore aggregations of humpback whales in the Gulf of Alaska. *Endangered Species Research*, 14, 217–226. <https://doi.org/10.3354/esr00351>
- Yamase, H. (1760). *Geishi [natural history of whales]*. Osaka, Japan: Osakashorin.
- Yonekura, M., Matsui, S., & Kasuya, T. (1980). On the external characters of *Globicephala macrorhynchus* off the Taiji, Pacific coast of Japan. *Scientific Reports of the Whales Research Institute*, 32(32), 67–95.
- Yoshino, H., Armstrong, K. N., Izawa, M., Yokoyama, J., & Kawata, M. (2008). Genetic and acoustic population structuring in the Okinawa least horseshoe bat: Are intercolony acoustic differences maintained by vertical maternal transmission? *Molecular Ecology*, 17(23), 4978–4991. <https://doi.org/10.1111/j.1365-294X.2008.03975.x>

SUPPORTING INFORMATION

Additional supporting information may be found online in the Supporting Information section at the end of the article.

How to cite this article: Van Cise AM, Baird RW, Baker CS, et al. Oceanographic barriers, divergence, and admixture: Phylogeography and taxonomy of two putative subspecies of short-finned pilot whale. *Mol Ecol*. 2019;00:1–17. <https://doi.org/10.1111/mec.15107>