

SAHGB 2016 Annual Symposium. 21 May 2016

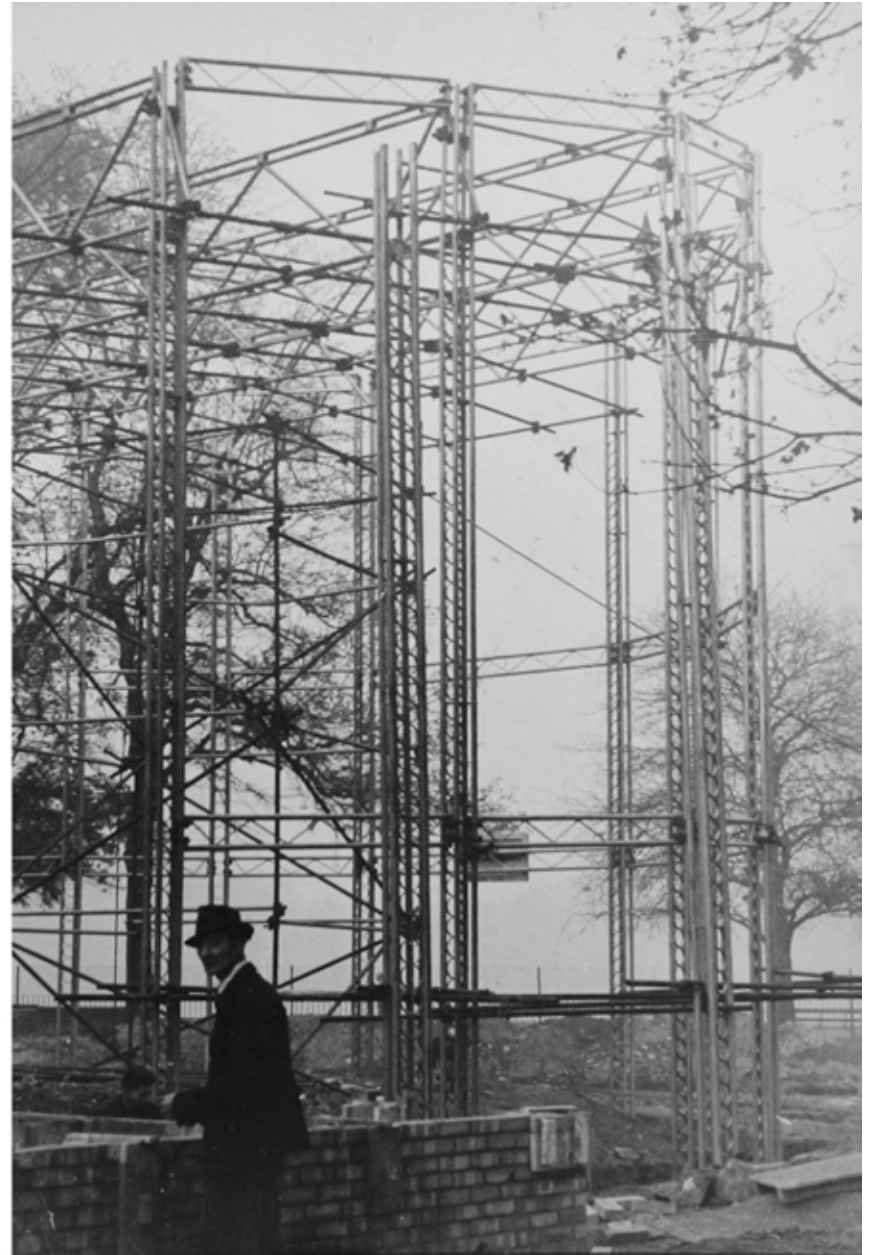
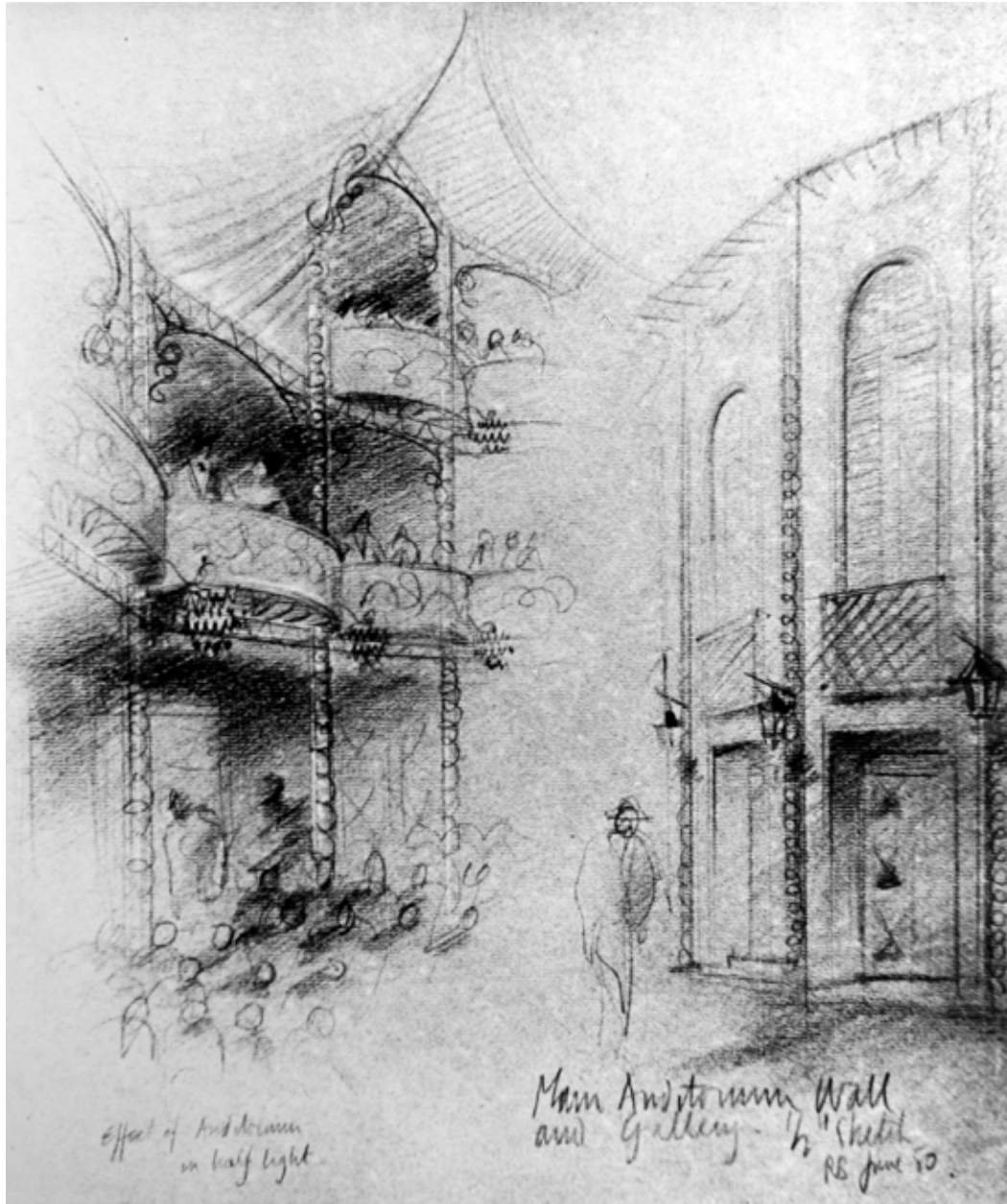
The Official Architect; missing chapters in the history of the profession

Roger Booth, Lancashire County Architect, 1962-83

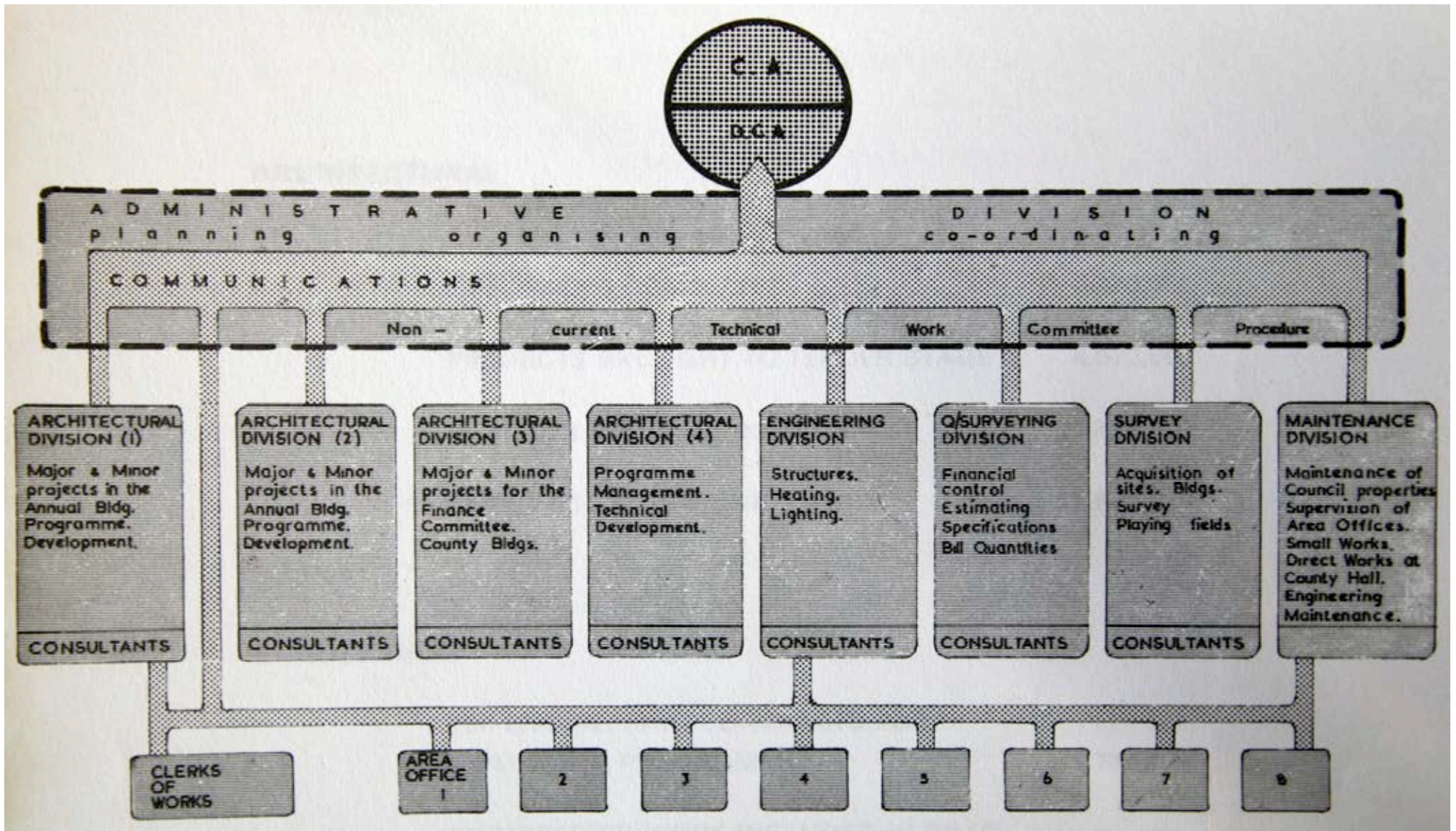


Richard Brook
Manchester School of Architecture
r.brook@mmu.ac.uk

Morecambe Library, 1967



Sketches for the Riverside Theatre by Roger Booth and photograph of construction.
Source: Author's photograph of archive material held by Mrs. Dorothy Booth.



Organisational structure of Lancashire County Architects' Department

Source: Extract from *County Architect's Report 1963-64*. Copy held at Lancashire County Record Office



Designs for school furniture.

Source: Extracts from *County Architect's Report April 1963 – March 1964*. Copy held at Lancashire County Record Office.



Chorley Police Station and Magistrate's Court, 1968.
Source: Author's photograph, May 2011.



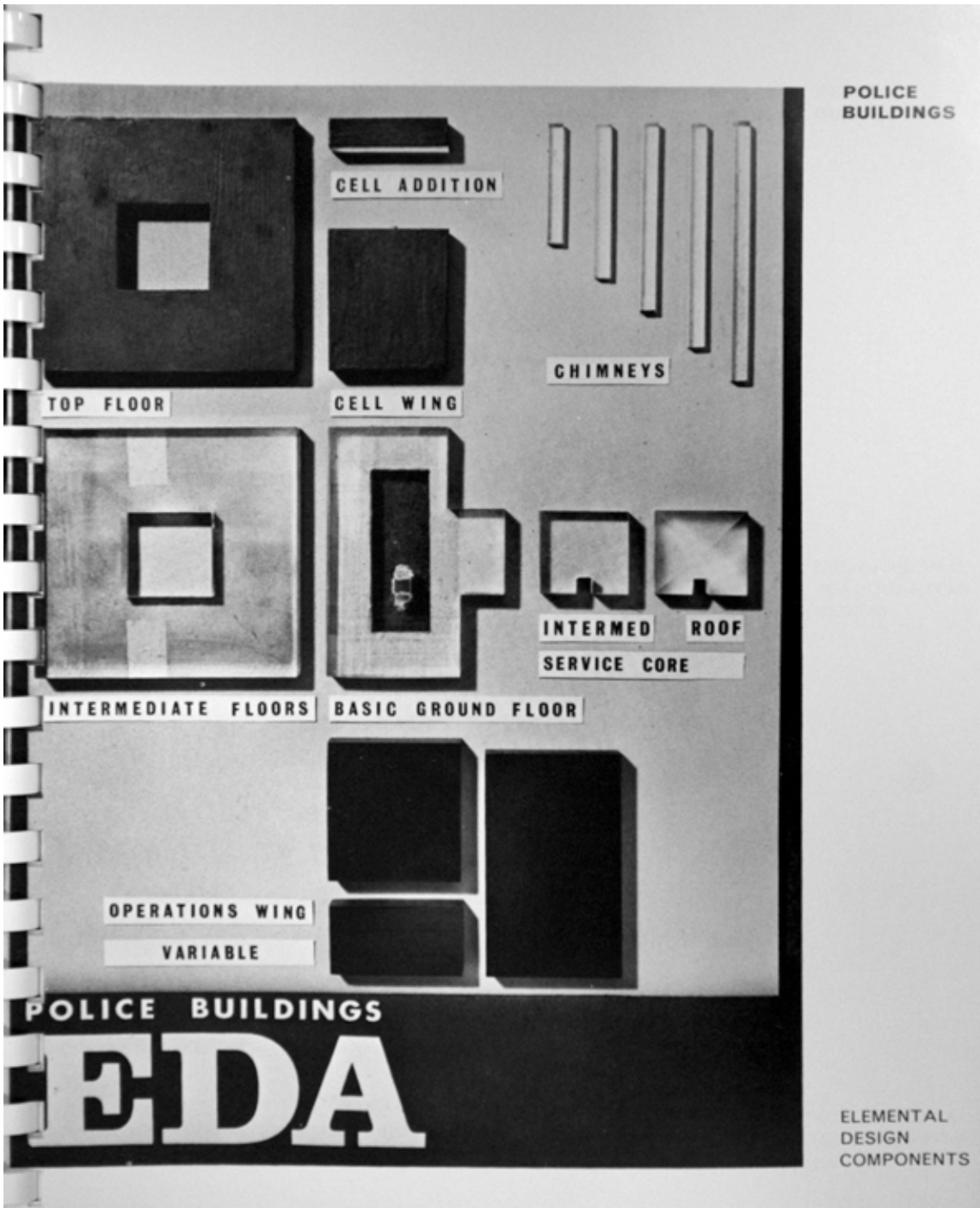
Bury Police Station, 1969.
Source: Author's photograph, November 2010.



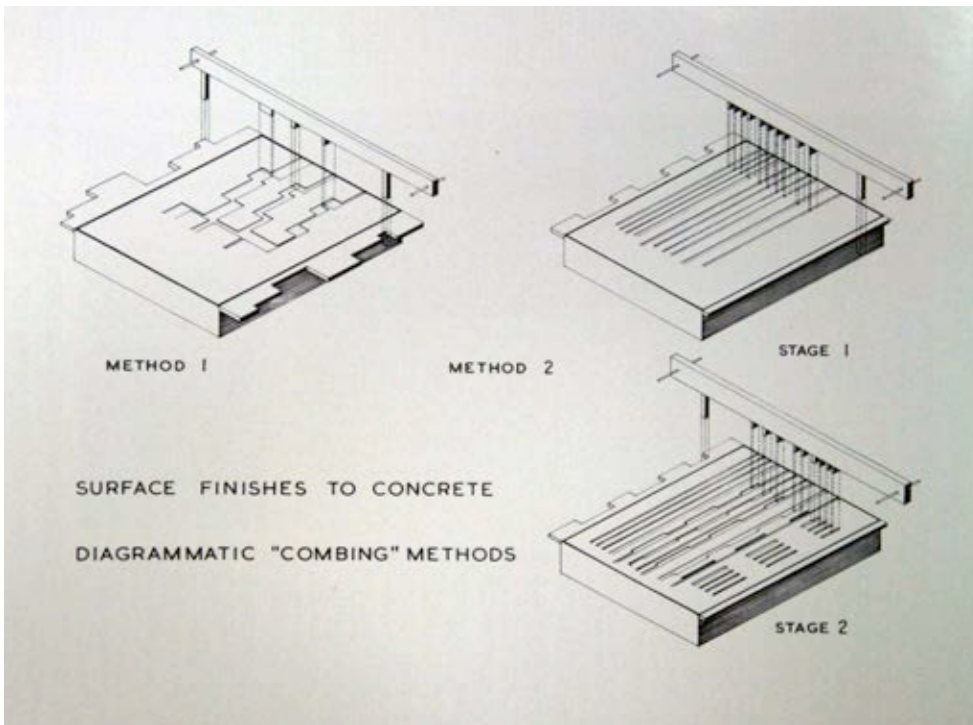
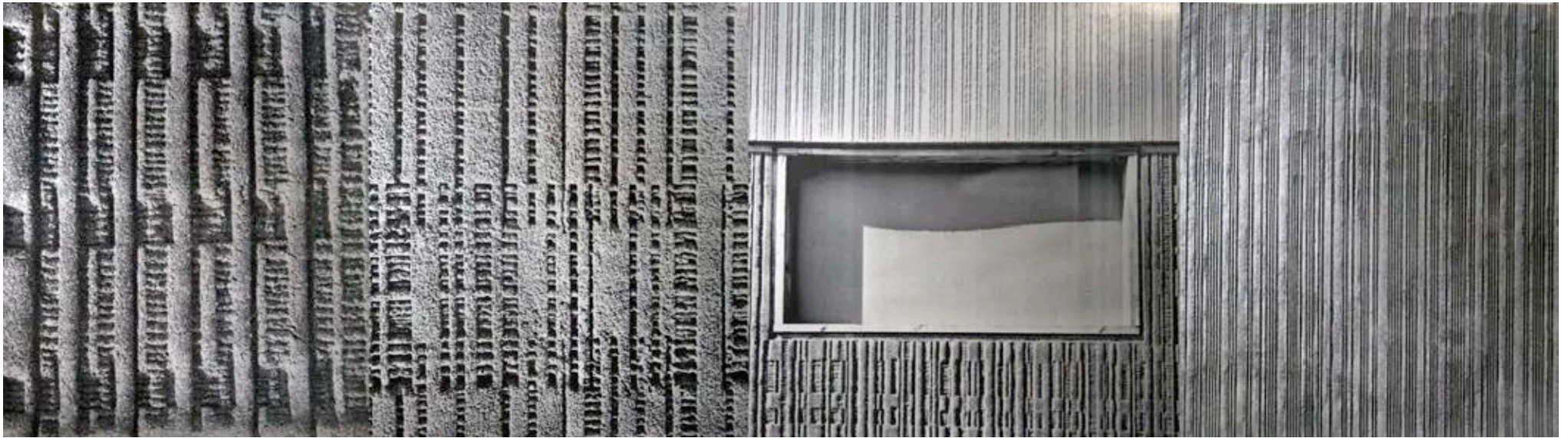
Lancaster Divisional Police HQ, 1962.



Rochdale Police Station & Magistrates' Court, 1964.



Elemental Design Components for police stations. Source: Author's photograph, extract from County Architect's Report, 1966-67.



Development and testing of concrete finishes.
Source: Extracts from *County Architect's Report April 1963 – March 1964*. Copy held at Lancashire County Record Office.



Model of scheme as proposed in Blackpool.
Source: Author's photograph, extract from County
Architect's Report, 1971-73.



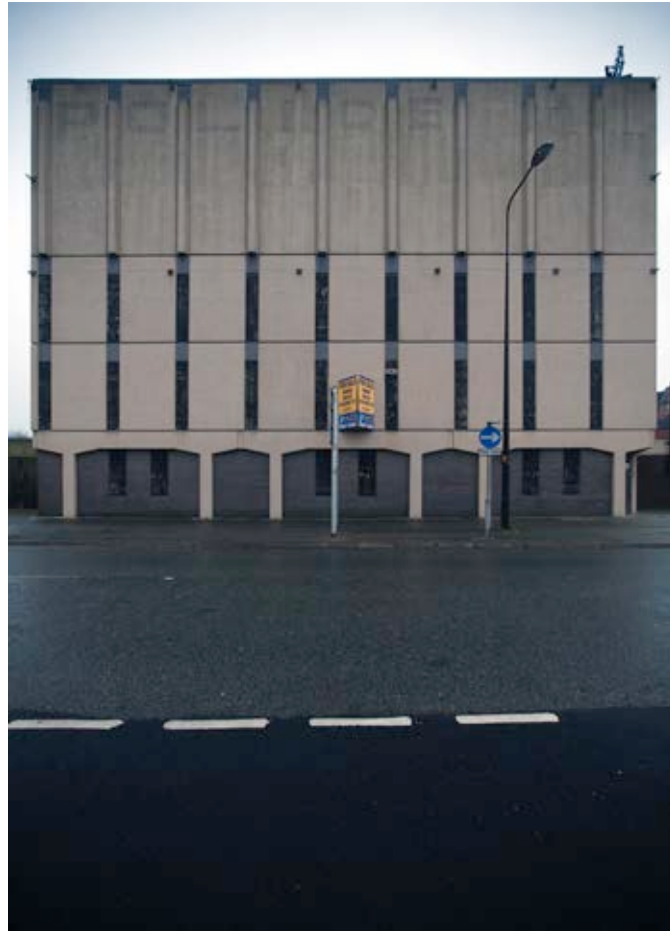
Prototype concrete panel assembly on school playing field, Accrington. Source: Author's photograph, January 2012.



Blackpool Divisional Police HQ and Magistrates' Court. Source: Author's photograph, June 2011.



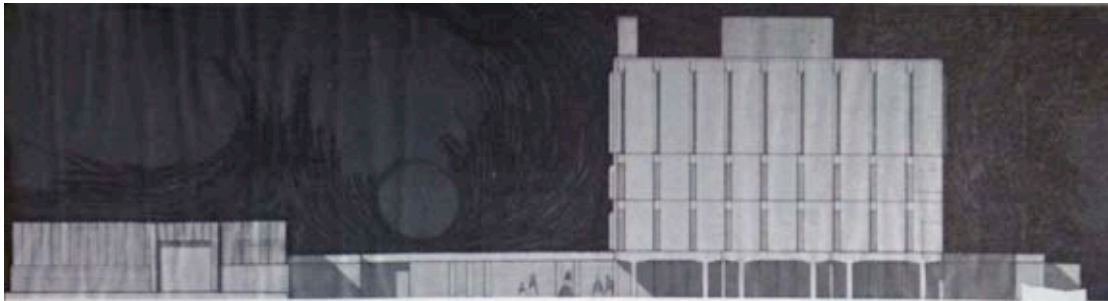
Morcambe Police Station, 1971.



Wigan Police Station, 1972.



Preston Police Station, 1971.



Wigan Divisional Police Headquarters.

An area of great potential. Some excellent landscaping with play in levels by the Local Authority is rapidly creating a new and exciting urban environment.

Large-scale planting of trees and shrubs, hard paved areas and the use of paving slabs throughout for pavements. This is a pattern that could well be followed by other authorities, busily engaged in creating a 'tarmacadam jungle'.

The solid character of this headquarters fits well into the development and closes the vista from Millgate.



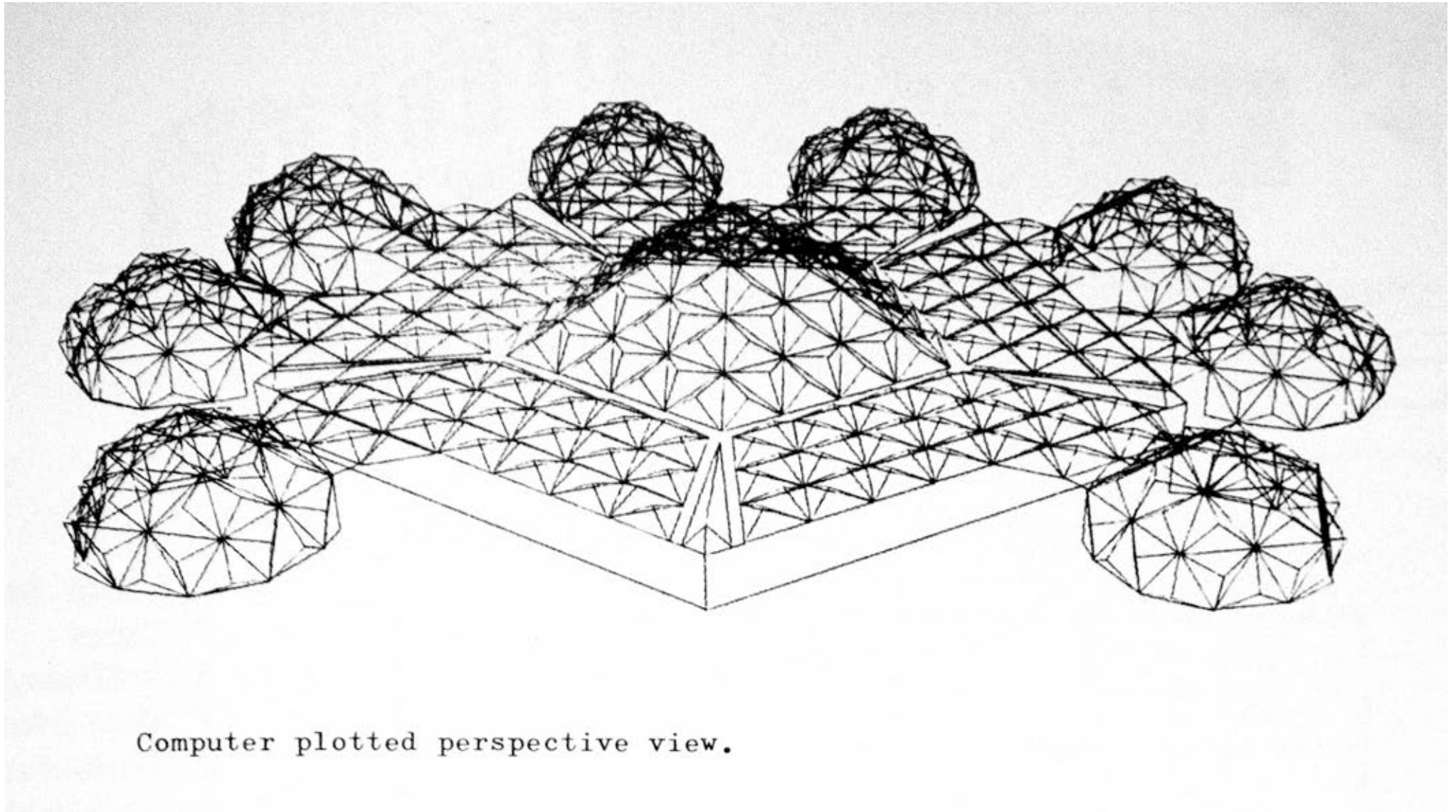
View from Millgate

Approach from Harrogate Street



'The Solid character of this headquarters fits well into the development of Long Millgate'

Wigan Police Station, 1972.
Source: Extract from *County Architect's Report*, April 1971 –
March 1973. Copy held at Lancashire County Record Office.



Computer plotted perspective view.

3D CAD representation of full plastic primary school.

Source: Extract from County Architect's Report, 1974-75. Copy held at Lancashire County Record Office



The Fulwood 'Bubble' at Kennington Road Primary School.
Source: Author's photograph, April 2012.



Interior of classroom

Source: Extract from County Architect's Report, 1974-75. Copy held at Lancashire County Record Office

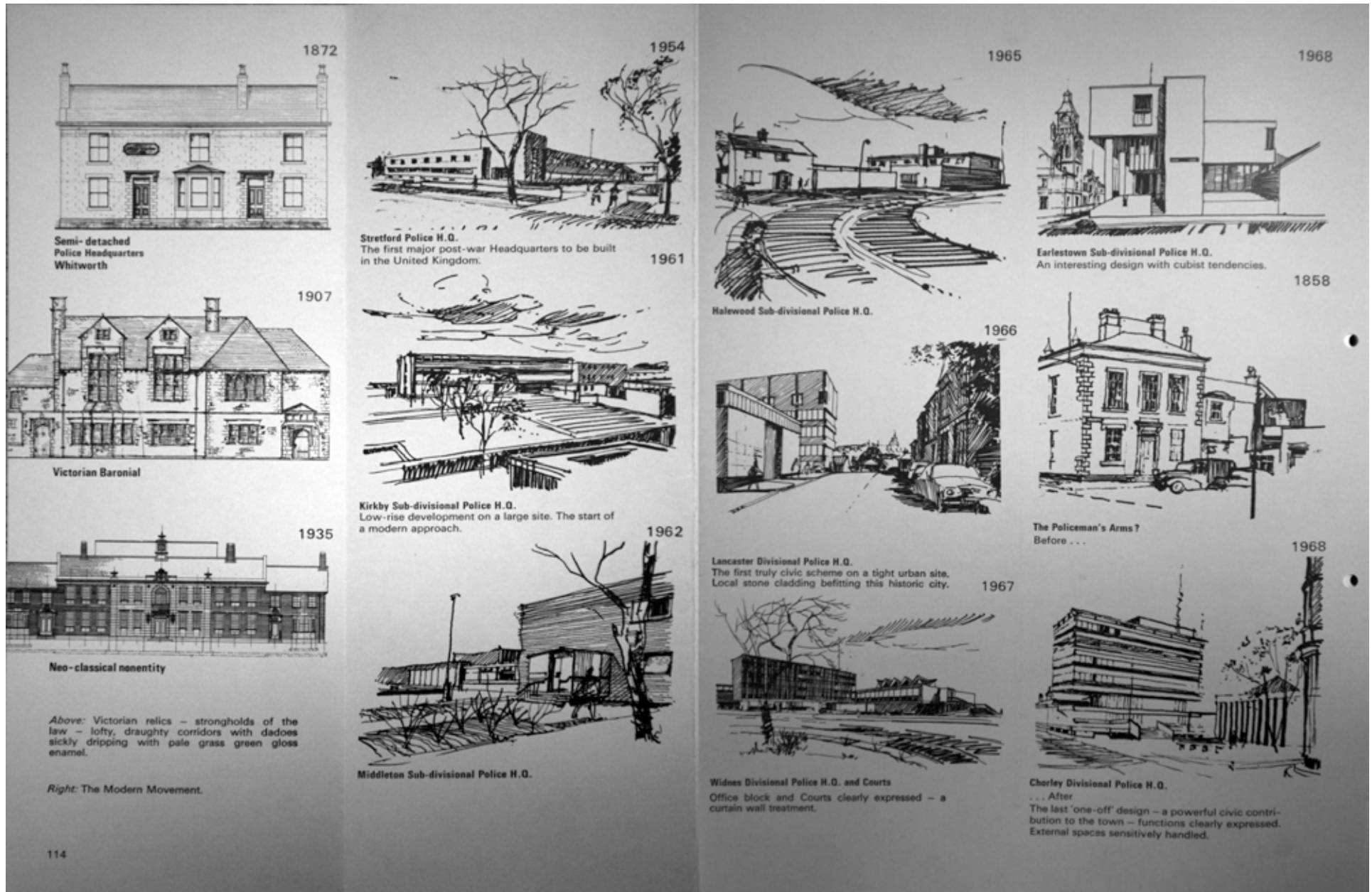
6 new *metropolitan county councils* with populations of 1.5 – 2.5 million.

36 new *metropolitan district councils* with populations from 180,000 – 1 million +.

304 new *district councils*



Revised map of English counties.
Source: *Surveyor*, 19 February 1971



Lancashire Police Stations

Source: Extract from *County Architect's Report, April 1971 – March 1973*. Copy held at Lancashire County Record Office.

'Pace of change and the scale of technological control over that change is such that men and women in local government can influence the environment'

Redcliffe Maud Report, 1969.

'One must hope that architects will be regarded as experts in the field of local authority building...'

Derek Senior, 'Local Government Reform: the outlook for the built environment', *RIBA J*, April 1971, p.154.

'The built environment professions could lose out unless they are willing to embrace new disciplines, such as cost benefit and management accountancy, and adopt more flexible attitudes in their areas of interest.'

'Local government reorganisation', *Built Environment*, June 1972, p.163.

'Most elected members and new chief officers will overnight become responsible for services on a scale much larger than they have known before.'

'Lancashire County Council is involved with five new counties and ten metropolitan districts [and] will be transferring staff in a number of different directions'

A.L. Norton, 'Local Government Reorganisation. When the bill becomes law' *RIBA J*, July 1972, pp.291-296.

'A district council, even in a large town, where housing was virtually the only area of any significant development would almost certainly find great difficulty in recruiting architectural staff of design ability and managerial capacity.'

'Architects and reorganisation', *Built Environment*, September 1972, p.410.

'...if you are a dedicated professional you will be given less opportunity for senior office than one who will subordinate his professional interests to management priorities.'

'...the reaction to the mention of quality in a period when the emphasis is on growth, productivity and effectiveness is that it is visionary, idealistic or a prelude to asking for money to spend.'

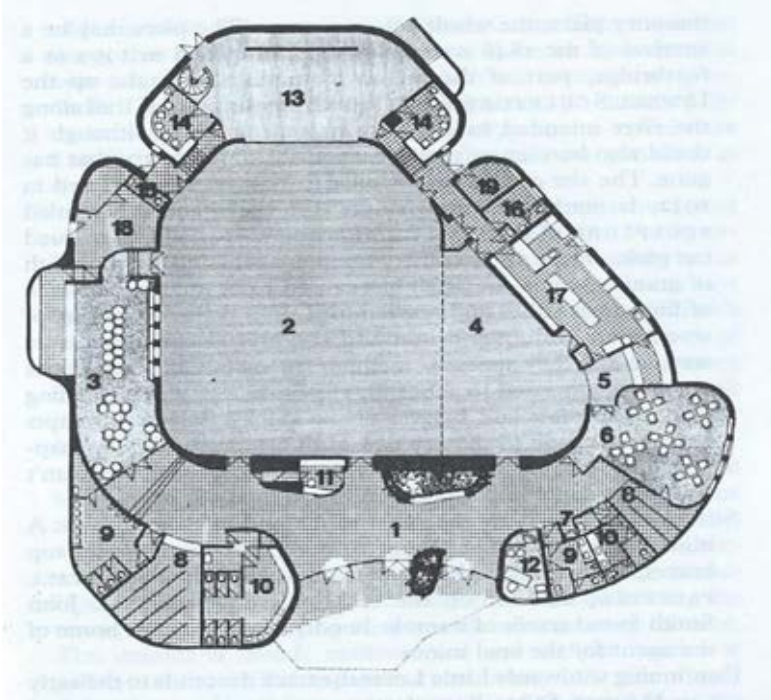
Jack Whittle, Cheshire County Architect, *AJ*, 2 May 1973, p.1031.

'...it's almost impossible to find any one officer or member, who has a good word to say about the changes, ie in comparison with what *could* have happened'

Tony Eddison, 'The great job carve up', *Building*, 25 Jan 1974, p.82.



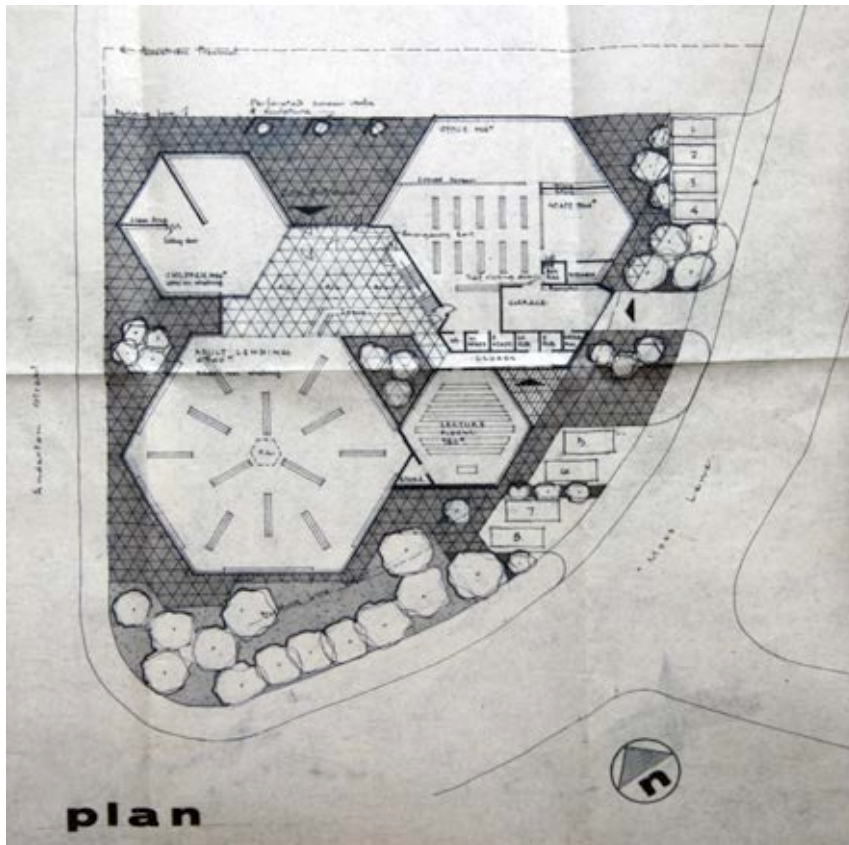
Radcliffe Civic Suite, John Sheard for Cruickshank & Seward, 1974.
Sources: Author's photographs; Pevsner.



'Hardly anyone can by now be aware of the slump in the Building Industry and, inter-alia, those of the several Professions connected with it – notably Architects. The actual facts of it are not so well known but, indeed, are stark enough – almost one-quarter of the Construction Industry now unemployed and, according to a recent official statement from the RIBA, a proportion of over one in every three Architects, if not actually unemployed, then not employed in Architecture.

It is too early to say whether the nadir has yet been reached, although it is not too early to say that the public sector portion of National construction (about one-half of it) has taken the biggest blow and, with it of course, all Public Architect's Departments – County, City or District.'

Roger Booth, Foreword, *Report of the County Architect, 1975-77*.



Morecambe Library plan.
Source: Author's photo from drawing held on site at Morecambe Library



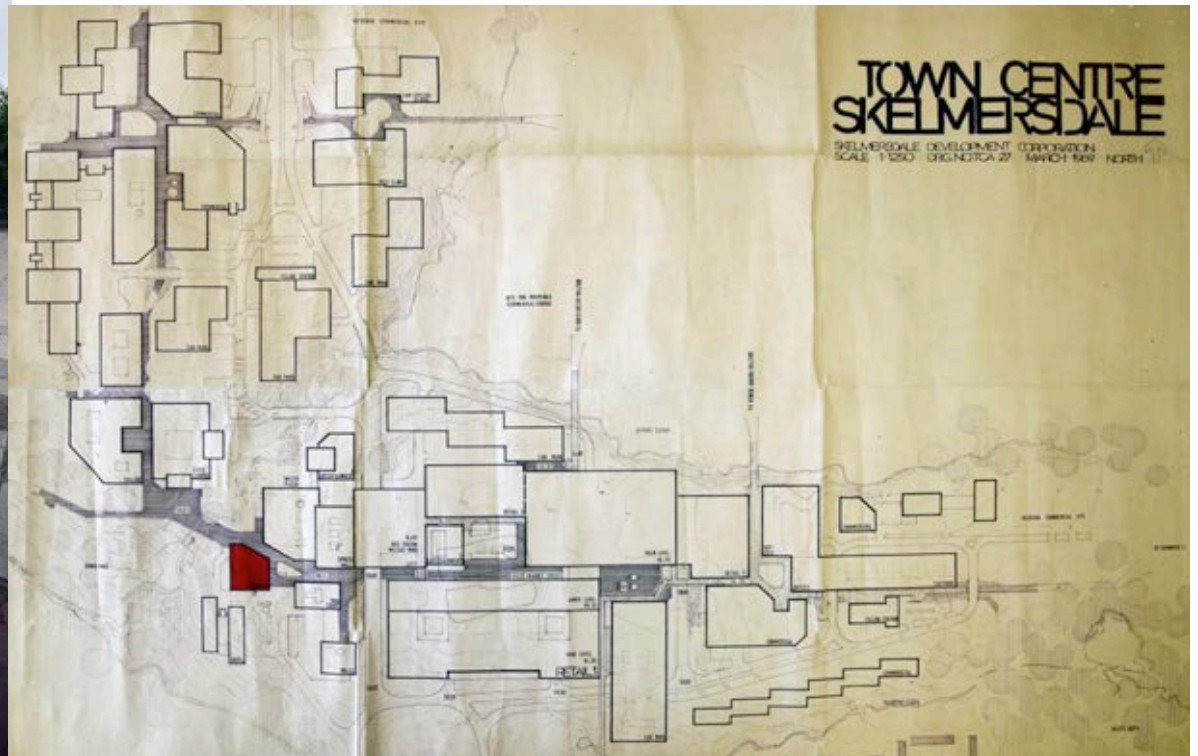
Police Station and Library, Skelmersdale, 1976. Source: Author's photograph, June 2011.



Skelmersdale Library, North Elevation.
Source: Author's photo from drawing held on site at Skelmersdale Library



Skelmersdale Town Centre, 1969. Drawing from the office of Skelmersdale Development Corporation.
Source: Author's photo from drawing held on site at Skelmersdale Library



Skelmersdale Library, 1976.
Source: Author's photo June 2011

Widnes Police Station and Magistrates' Court, 1967.



Fleetwood Radar Station, 1961-62. Grade II



Leyland Magistrates' Court, 1970.



County College, Lancaster University, 1969.

Roger Booth was given the title, 'North-West Pacemaker', and, as reported in 1970, his work was 'little known outside the north-west, but the quality of building achieved deserves recognition'.