



CURRENT STATUS OF CONFIRMED CASES

7,060

Total cases

99

Total deaths

6,389

Cases recovered

12

CURRENT CASES
INTENSIVE CARE UNITS (ICU)

ACT	NSW	NT	QLD	SA	TAS	VIC	WA
0	6	0	1	0	0	5	0

45

CURRENT CASES
ADMITTED TO HOSPITALS

ACT	NSW	NT	QLD	SA	TAS	VIC	WA
0	22	2	4	1	6	9	1

1,062,034

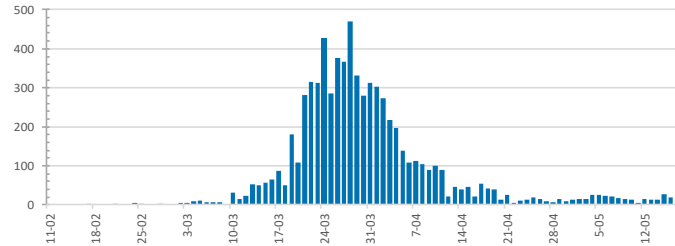
0.7% POSITIVE

TOTAL TESTS
CONDUCTED

ACT	NSW	NT	QLD
14,290	371,881	6,417	155,755
POSITIVE	POSITIVE	POSITIVE	POSITIVE
0.7%	0.8%	0.5%	0.7%

SA	TAS	VIC	WA
79,616	22,246	345,290	66,539
POSITIVE	POSITIVE	POSITIVE	POSITIVE
0.6%	1.0%	0.5%	0.8%

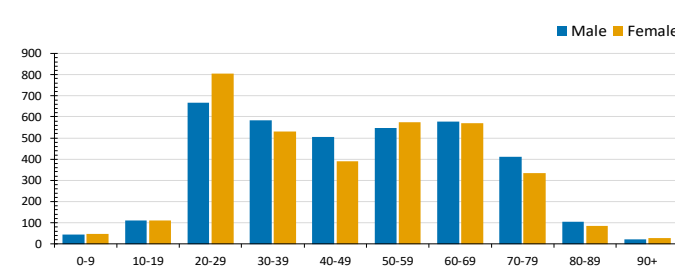
DAILY NUMBER OF REPORTED CASES



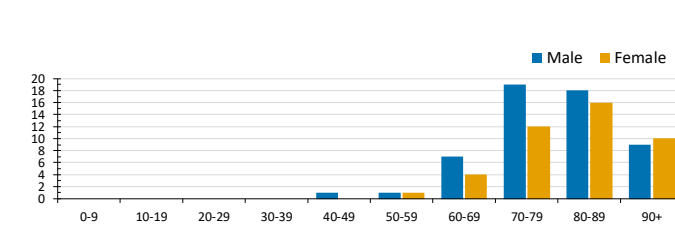
CASES IN AGED CARE SERVICES

Confirmed Cases	Australia	ACT	NSW	NT	Qld	SA	Tas	Vic	WA
Residential Care Recipients	64 [22] (26)	0	61 [22] (24)	0	1 (1)	0	1 (1)	1	0
In Home Care Recipients	31 [25] (3)	0	13 [13]	0	8 [7]	1 [1]	5 [1] (2)	3 [3]	1 (1)
Cases in care recipients [recovered] (deaths)									

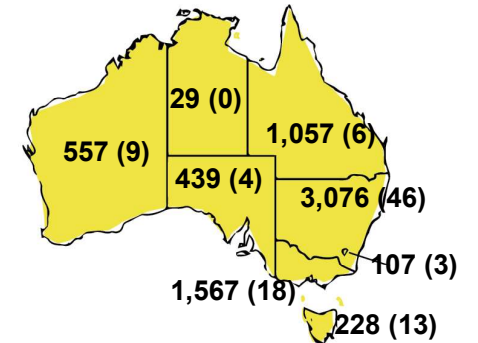
CASES BY AGE GROUP AND SEX



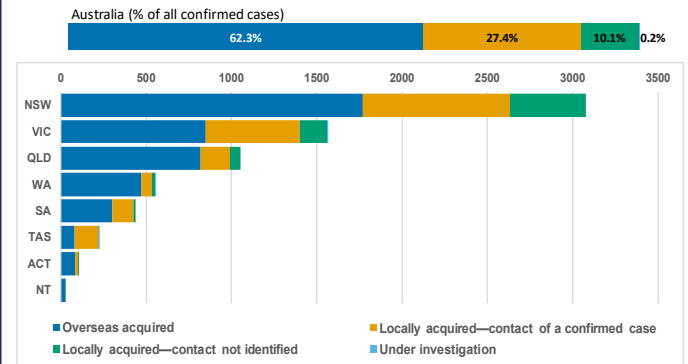
DEATHS BY AGE GROUP AND SEX



CASES (DEATHS) BY STATE AND TERRITORIES



CASES BY SOURCE OF INFECTION



PUBLIC HEALTH RESPONSE MEASURE

Proportion of total cases under investigation

