

50 / 50 "beam-splitter" or "2 way mirror" usually used as a teleprompter. Reflects image from monitor over camera lens while still allowing camera optics to see through non-reflective side of mirror and see an un-obscured image of the subject.

Video camera feeds image of Director into film camera's "teleprompter."

Beam-splitter (teleprompter) same as over film camera.

Flat video monitor receiving video feed from film camera.

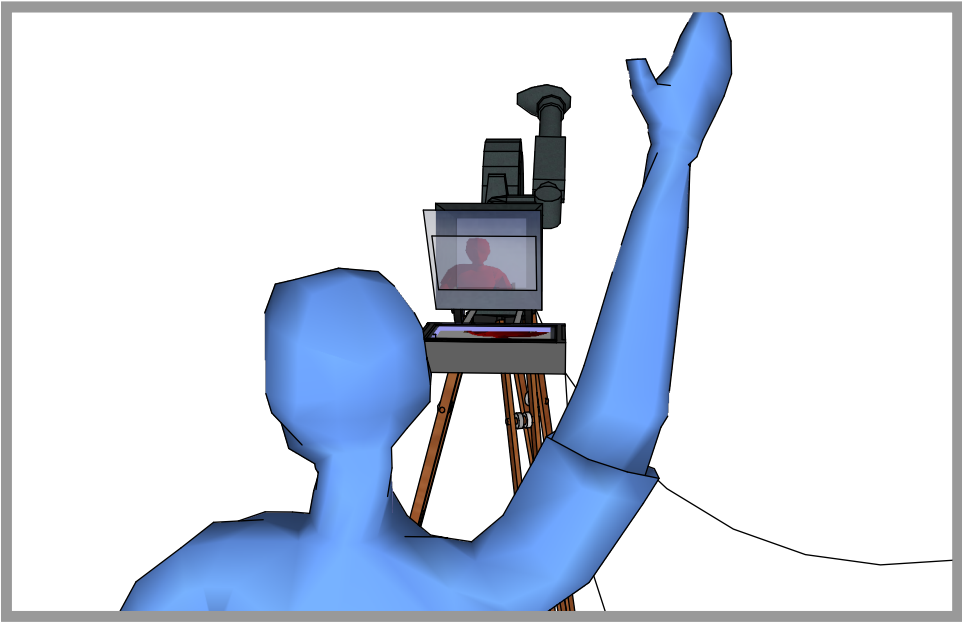
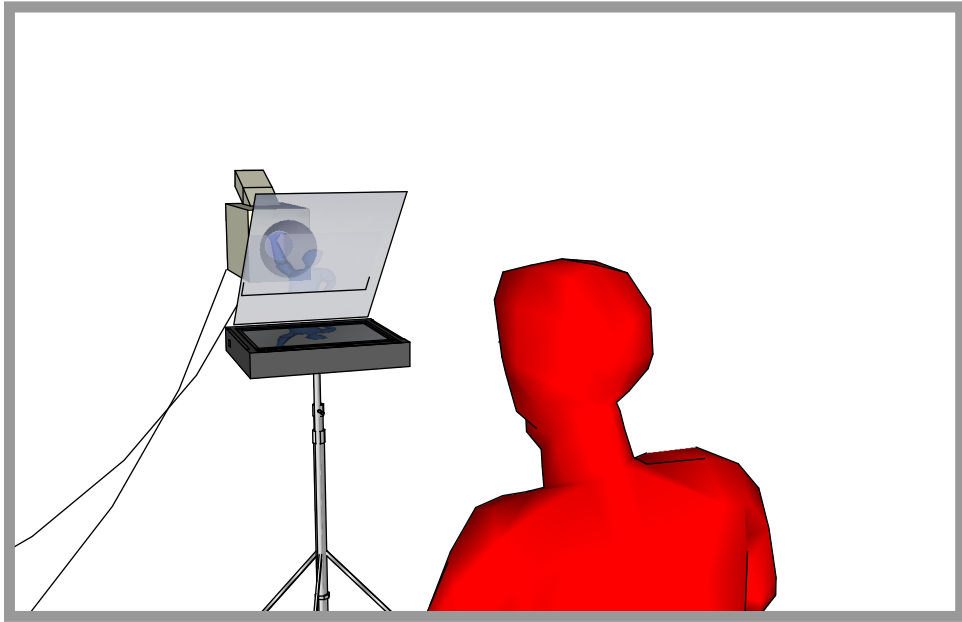
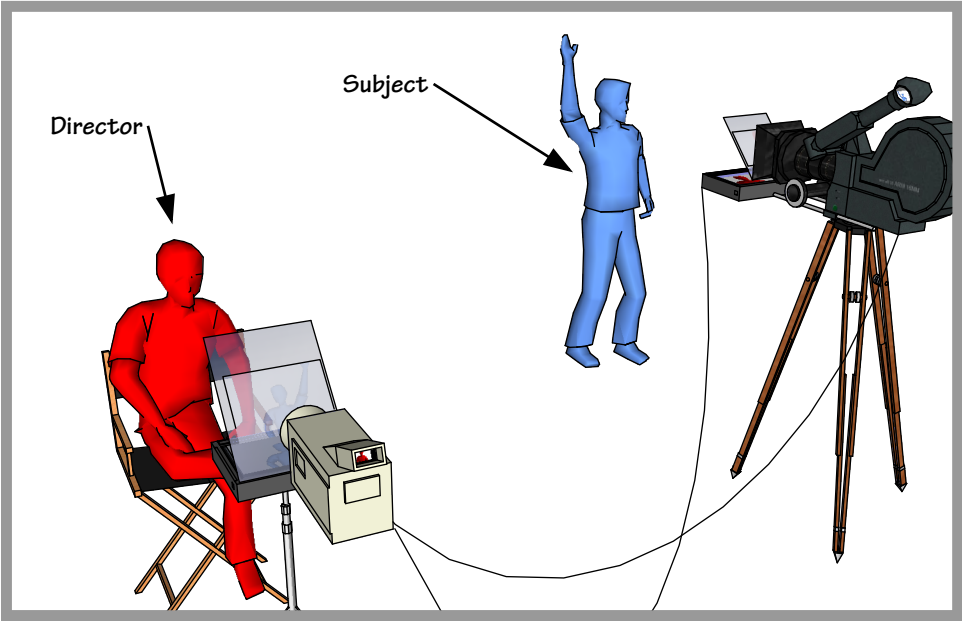
Film camera's internal video tap (which sees same image as exposed film) OR digital camera's video output signal sends video signal to Director's video monitor. Director is able to see the "blue" man on his monitor through the reflection on his "teleprompter." The "blue" subject is able to see a projected reflection of director on "teleprompter" over the film camera lens. This allows for "virtual" eye contact between Director and subject while still allowing subject to be looking directly into the lens of the film camera.

Flat video monitor receiving video signal from video camera behind director's "teleprompter."

Director is able to see the the subject via the video tap from the film camera OR Digital camera's output projected onto the teleprompter while simultaneously sending his own image back to the subject's teleprompter for a "virtual" eye to eye exchange. As well as being able to engage the subject directly face-to-face, the Director is also seeing exactly what will be recorded on film.

Setting this up requires special attention to aligning eyes correctly. Director has to be lit independently as well as be mic'd to get his voice with a small speaker placed near Blue subject. Director wears headphones fed from sound mixer.

Interrotron overview ( lighting and hoods around teleprompters not shown for clarity ) - Illustrations by Steve Hardie



50 /50 "beam-splitter" or "2 way mirror" usually used as a teleprompter. Reflects image from monitor over camera lens while still allowing camera optics to see through non-reflective side of mirror and see an un-obscured image of the subject.

Film camera's internal video tap (which sees same image as exposed film) sends video signal to Directors video monitor. Director is able to see the "blue" man on his monitor through the reflection on his "teleprompter." The "blue" subject is able to see projected reflection of director on "teleprompter" over the film camera lens. This allows for "virtual" eye contact between Director and subject while still allowing subject to be looking directly into the lens of the film camera.

Flat video monitor receiving video signal from video camera behind director's "teleprompter."

50 /50 "beam-splitter" or "2 way mirror" Usually used as a teleprompter.

Video camera feeds image of Director into film camera's "teleprompter."

Beam-splitter (teleprompter) same as over film camera.

Flat video monitor receiving video feed from film camera.

Director is able to see the the subject via the video tap from the film camera projected onto the teleprompter while simultaneously sending his own image back to the subject's teleprompter for a "virtual" eye to eye exchange. As well as being able to engage the subject directly face-to-face, the Director is also seeing exactly what will be recorded on film.

Interrotron overview ( lighting and hoods around teleprompters not shown for clarity)

