



doltone house

HYDE PARK
SYDNEY CBD

**MANHATTAN
& AVENUE**

**NEW YORK
INSPIRED**

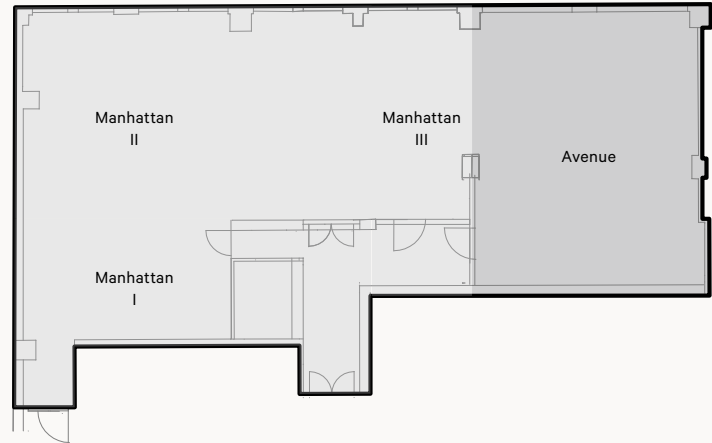
Brand new purpose built meeting and event space that are multifunctional, diverse and designed as the ultimate place for conducting executive meetings, elegant cocktail affairs, intimate dinners or a fresh view on breakfast.

WINNER

**MEETINGS AND EVENTS INDUSTRY HALL OF FAME
SPECIALTY MEETING VENUE**

Hyde Park - MANHATTAN & AVENUE

- Sydney CBD location
- Pillarless, fully carpeted floor space
- Blend of contemporary and old world Manhattan ambience
- High ceilings & architectural features
- Intimate space for small groups designed for a variety of events
- Abundance of natural light with fresh colour palette
- Equipped with the latest state-of-the-art technology and WiFi internet access



FOOD & CATERING

- AWARD WINNING -

Serving Sydney's best quality produce, from the freshest of seafoods, and the premium cut of meats, we source only the highest standard for you.

CAPACITIES

	Manhattan 147m ²	Manhattan I & II 118m ²	Manhattan + Avenue 225m ²	Avenue 78m ²
DINNER	100	80	170	60
DINNER DANCE	100	60	150	40
COCKTAIL	150	150	180	60
THEATRE	150	95	155	78
CABARET	55	40	80	42
CLASSROOM	60	45	90	48
U-SHAPE	42	30	-	24
BOARDROOM	42	24	-	24

Not to scale, capacities subject to event set up requirements



PARKING

Sheraton on the Park Parking
138 Castlereagh Street

Secure Parking Piccadilly
137 Castlereagh Street
(02) 8912 4900

Wilson Parking
175 Liverpool Street
1800 727 546

Domain Car Park
2 St Marys Road
(02) 9232 6165

The Cathedral Street Car Park
2 Cathedral Street
(02) 9380 8850

**Doltone House
Hyde Park**

3/181 Elizabeth Street,
Sydney, 2000

LOCATION

Superbly located within a prestigious sector of Sydney's CBD precinct and exclusive retail outlets, Doltone House Hyde Park is also directly adjacent to the 5-Star Sheraton on The Park Hotel.