

# CUNY NEWSWIRE

Vol. XVIII, No. 311

Thursday, August 14, 2014

\$1.25

## The New NYCCT New Academic Building



### Project Details

24.8 Acre Addition East Side Academic Building  
 A Seven-Story Building with Training  
 Laboratories, Classrooms and Office Space  
 Located South of the Campus  
 New York City Community College  
 Federated Project Group  
 Start of Construction - January 2015  
 End of Construction - Spring 2017  
 MBP Investment - 24.8 Acre Addition  
 WPP Management - 24.8 Acre Addition  
 Project Value - \$100,000,000

### THREE SITE PLAN



Site Plan  
 24.8 Acre Addition  
 WPP Management



### CONSTRUCTION PHASE BIM PLAN

24.8 Acre Addition  
 WPP Management

### CONSTRUCTION PHASE BIM PLAN

24.8 Acre Addition  
 WPP Management

### CONSTRUCTION PHASE BIM PLAN



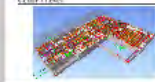
### DESIGN MODEL



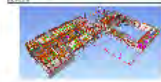
### DESIGN MODEL



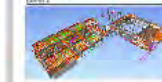
### DESIGN MODEL



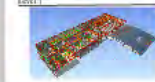
### DESIGN MODEL



### DESIGN MODEL



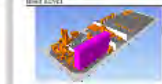
### DESIGN MODEL



### DESIGN MODEL



### DESIGN MODEL



### PRELIMINARY PROCESS

24.8 Acre Addition  
 WPP Management

## PRELIMINARY BID / AWARD SCHEDULE

Fall / Winter 2014 & Spring 2015

- Site Security Guard
- Medical, Lab Equipment & Casework
- Theater Rigging, Draperies, Platforms & Lighting
- Paintings & Coatings
- Flooring
- Food Service Equipment
- Parking Control & LD Equipment
- Signage
- Exterior Site Work



# CUNY NEWSWIRE

Vol XCIII, No. 311

Thursday, August 14, 2014

\$1.25

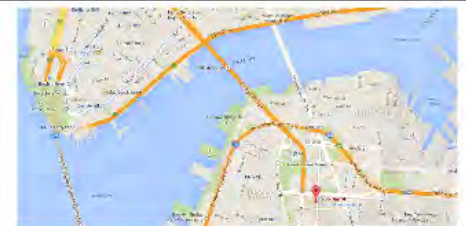
## The New NYCCT New Academic Building

### Project Details

- 356,839 Square Foot New Academic Building
- 8-Story Building with Training

### PROJECT SITE PLAN

Jay Street & Tillary Street, Brooklyn, NY



# The New NYCCT New Academic Building

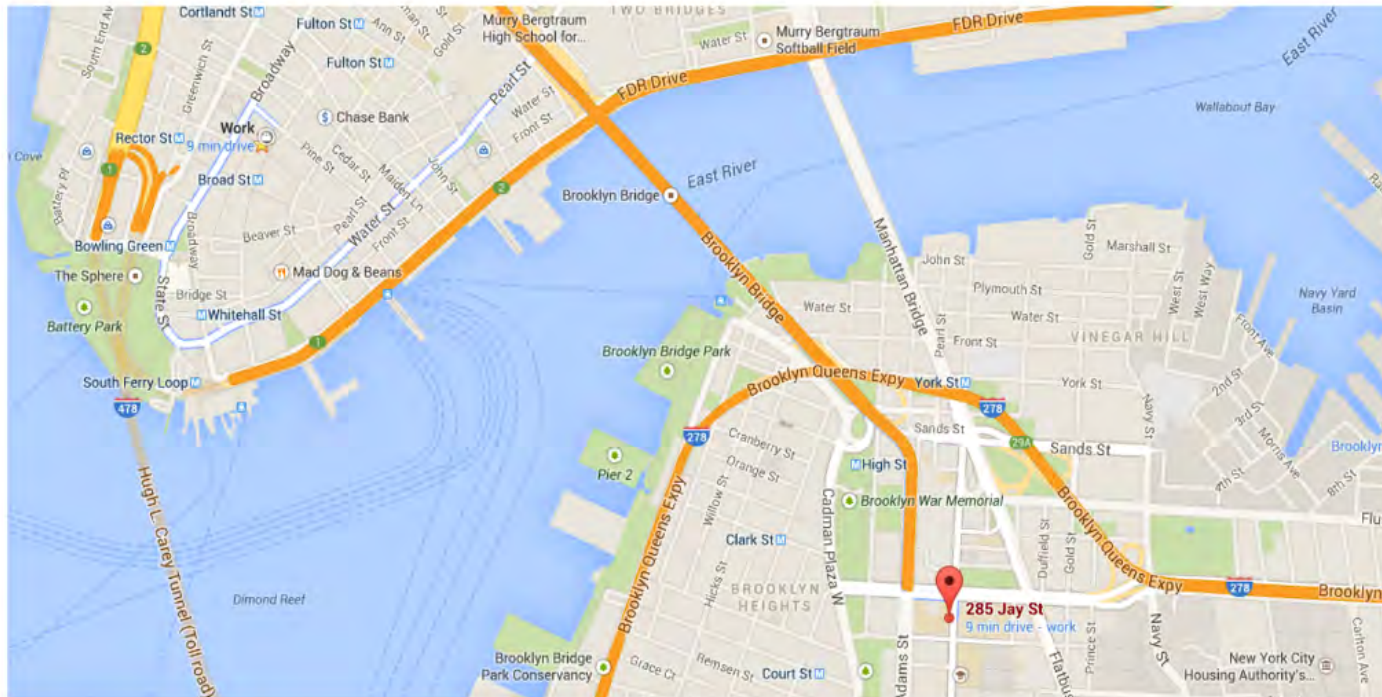


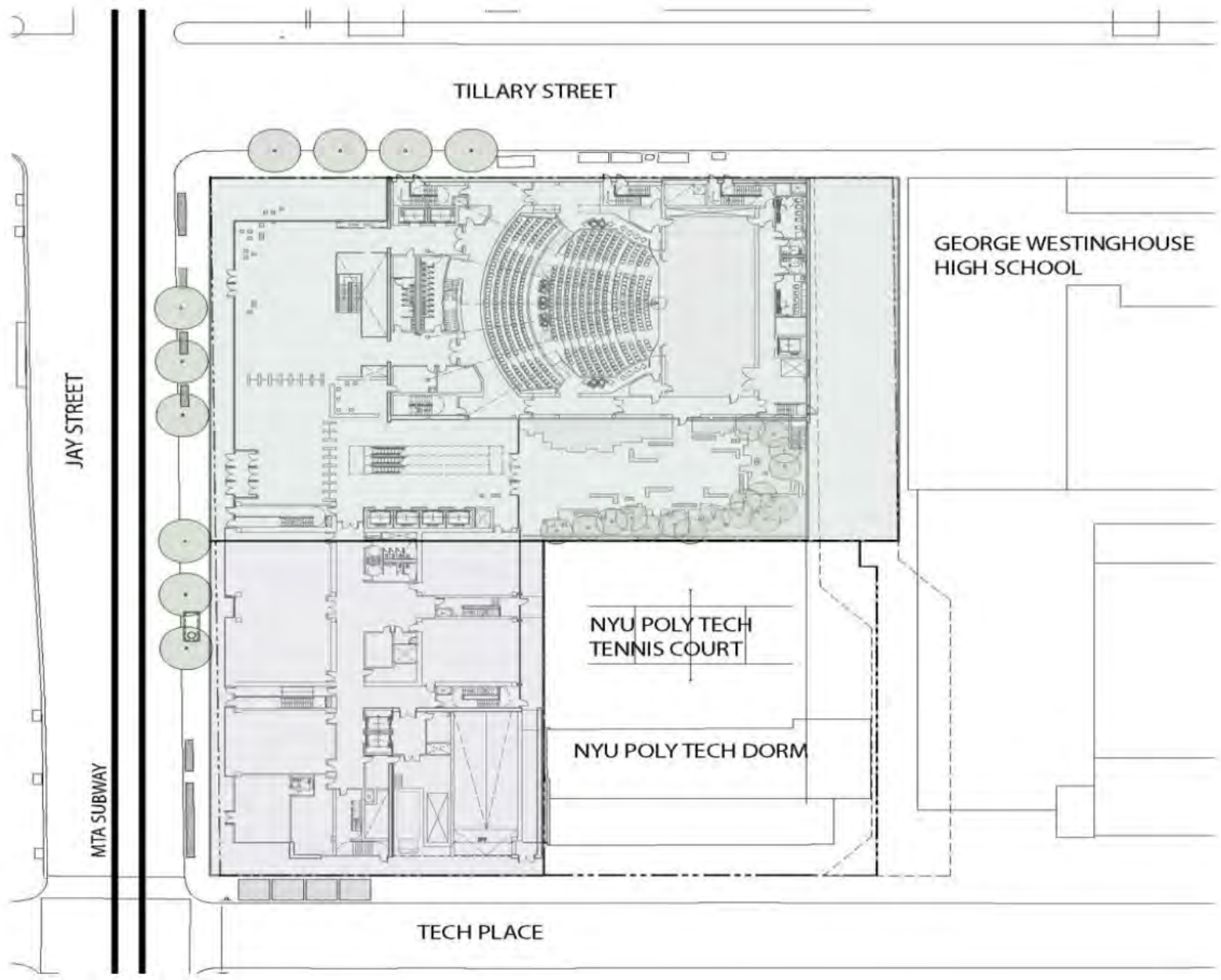
## Project Details

- 356,839 Square Foot New Academic Building
  - 8-Story Building with Training Laboratories, Classrooms and Office Spaces
  - 1,000 Seat Auditorium
  - 800 Seat Gymnasium
- Underground Parking Garage
- Start of Construction – January 2013
- End of Construction – Spring 2017
- MBE Requirement = 12% (NY State Certified)
- WBE Requirement = 8% (NY State Certified)
- Project Labor Agreement (PLA)

# PROJECT SITE PLAN

## Jay Street & Tillary Street, Brooklyn, NY





TILLARY STREET

GEORGE WESTINGHOUSE  
HIGH SCHOOL

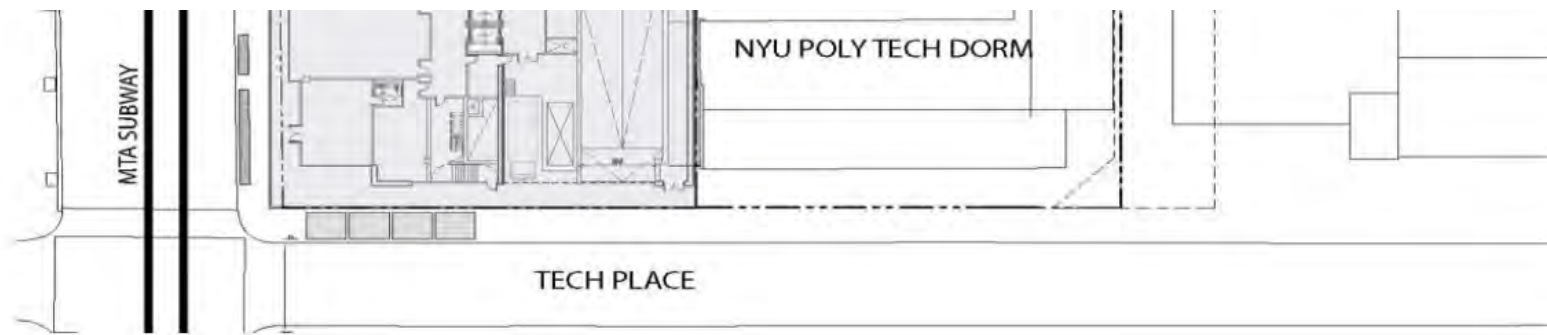
JAY STREET

MTA SUBWAY

NYU POLY TECH  
TENNIS COURT

NYU POLY TECH DORM

TECH PLACE



**Structural Steel: 4,600 Tons**

**Steel Stairs: 18**

**Superstructure Concrete: 9,000+ cu yds**

**Masonry (CMU): 79,000 SF**

**Exterior Wall System: 139,000 SF**

**Tile Roofing: 43,000 SF**

**Kemper / EPDM Roofing: 47,000 SF**

**Laboratory Casework: 7,000 LF**

**Hollow Metal & Wood Doors: 651**

**Dental Chairs / Equipment: 24**

**GWB Walls & Ceilings: 877,000 SF**

**Acoustical Tile Ceilings: 8,000 SF**

**Ceramic Tile: 61,000 SF**

**Wood Flooring: 44,000 SF**

**Terrazzo Flooring: 35,000 SF**

**Carpeting: 4,500 SY**

**Resilient Tile Flooring: 35,000 SF**

**Painting: 806,000 SF**

**Elevators: 9**

**Escalators: 14**





**Perkins Eastman**  
115 FIFTH AVENUE T 212 2057600  
NEW YORK, NY 10003 F 212 2057626

**CITY TECH ACADEMIC BUILDING**  
(NORTH WEST ELEVATION)

AUGUST 26, 2008





**Perkins Eastman**  
110 FIFTH AVENUE T. 212 303 7800  
NEW YORK, NY 10003 F. 212 303 7876

**CITY TECH ACADEMIC BUILDING**  
(EAST ELEVATION)

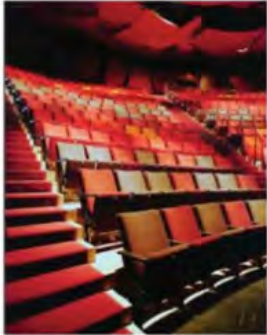
AUGUST 26, 2004



**Perkins Eastman**  
115 FIFTH AVENUE T. 212 512 7100  
NEW YORK, NY 10003 F. 2 12 553 7676

**CITY TECH ACADEMIC BUILDING**  
(SOUTH EAST ELEVATION)

AUGUST 26, 2008



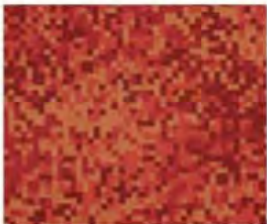
1 Guthrie Theater, Minneapolis, MN



2 Ferguson Rec. Hall, Minneapolis, MN



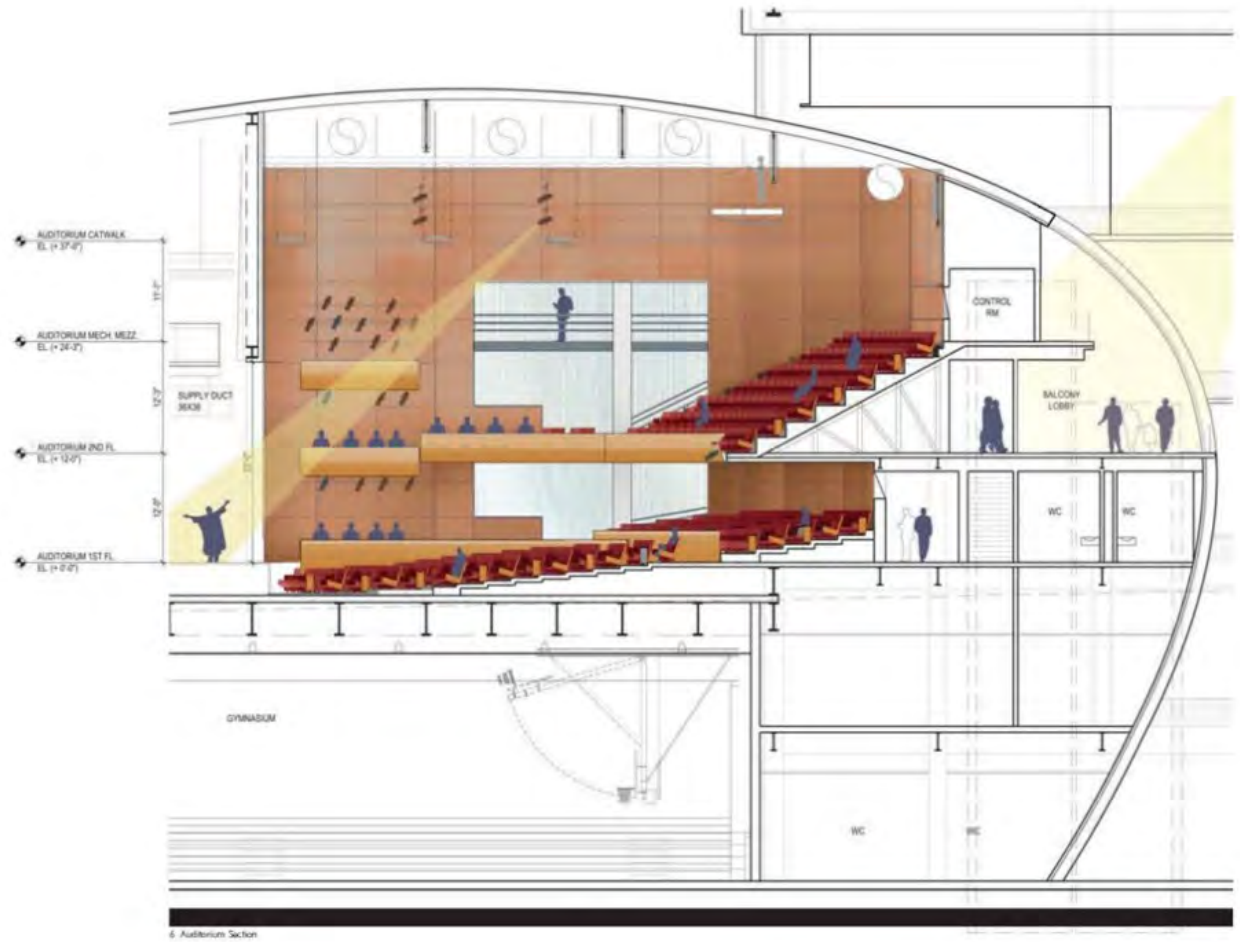
3 Auditorium Seating



4 Seat Upholstery



5 Carpet

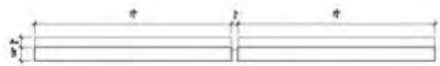


## Auditorium

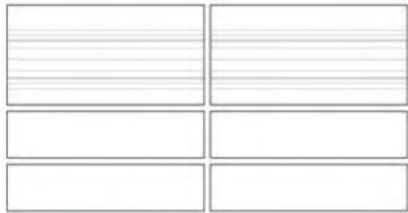
City Tech Academic Building

Scale NTS  
17 November 2011

Perkins Eastman



1 Horizontal Section



2 Plan



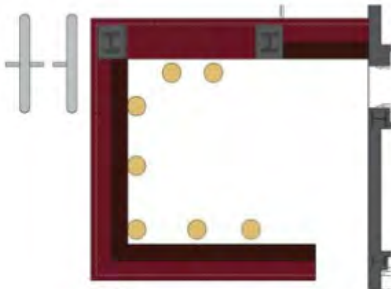
3 Vertical Section



4 Detail View



5 Axonometric View



6 Desk Plan



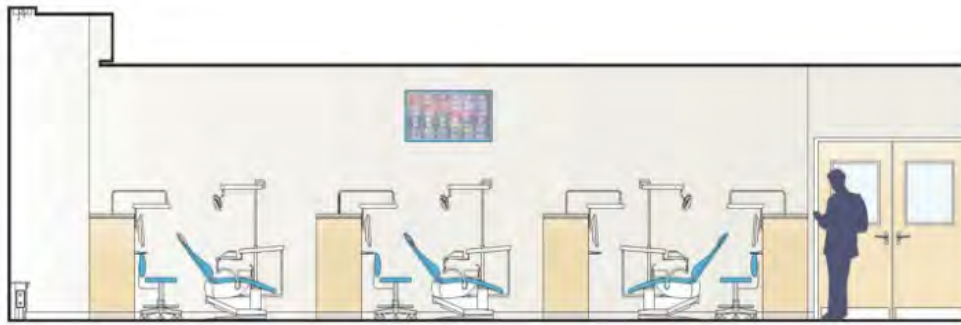
7 Main Lobby View

## Main Lobby

City Tech Academic Building

Scale NTS  
17 November 2011

Perkins Eastman



1 Dental Lab Elevation



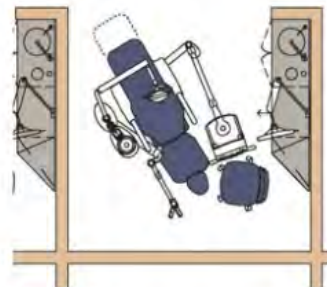
2 Dental Lab Elevation



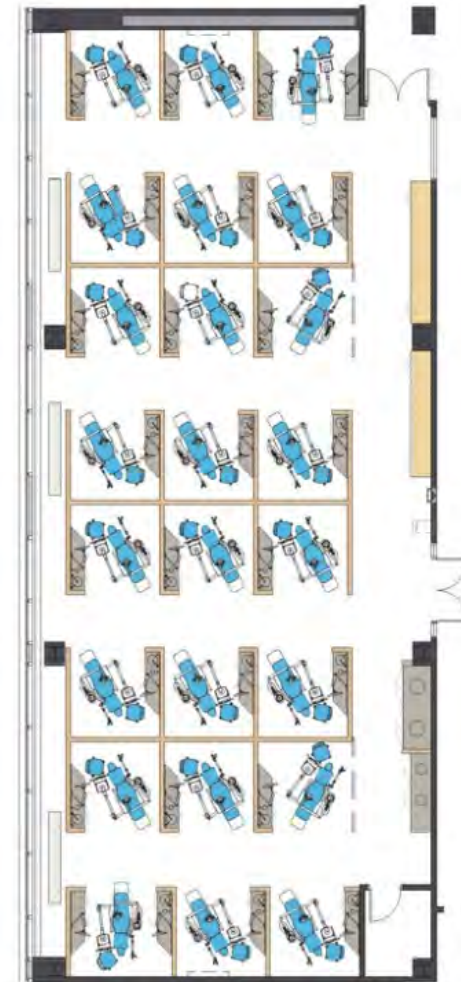
3 Dental Chair



4 Dental Cabinet



5 Typical Workstation



6 Floor Plan

Dental Labs

City Tech Academic Building

Scale NTS  
17 November 2011

Perkins Eastman

---

# CONSTRUCTION PHASE BIM PLAN

## Models to be generated

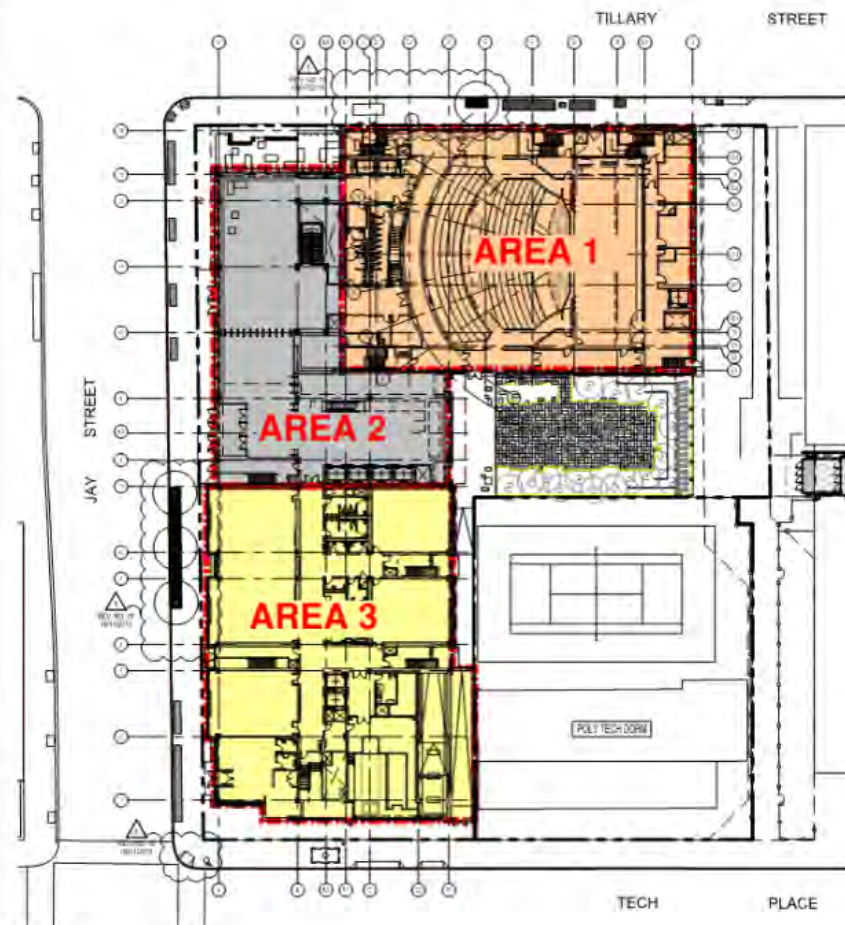
---

- **Architectural Model**
- **Steel Fabrication Model**
- **HVAC – Duct model**
- **HVAC – Piping Model**
- **Plumbing Model**
- **Electrical Model which includes Lighting, Power, Routing, Lightning Protection, Fire Alarm, Security, Communication, Audio Visual, IT & Building Automation Systems (BAS) Models**
- **Fire Sprinkler Model**
- **Specialty Model(s)**
- **Carpentry Model - Drywall & Ceilings**

# CONSTRUCTION PHASE BIM PLAN

## Coordination Sequence

1	Sub Slab	Auditorium
2		North Section
3		South Section
4	Level C2	North Mechanical Plan - Gymnasium
5		North Mechanical Plan - Fitness Centre
6		South Mechanical Plan - Mechanical Rooms
7	Level C1	North Mechanical Plan - Gymnasium
8		North Mechanical Plan - Athletic Offices
9		South Mechanical Plan - Parking & Mechanical Services
10	Level 01	North Mechanical Plan - Auditorium
11		South Mechanical Plan - Auditorium support areas
12		South Mechanical Plan - Classrooms and Loading Dock
13	Level 02	North Mechanical Plan - Auditorium
14		North Mechanical Plan - Auditorium support areas
15		South Mechanical Plan - Labs
16	Level 03	North Mechanical Plan - Auditorium
17		North Mechanical Plan - Auditorium support areas
18		South Mechanical Plan - Labs
19	Level 03 Mexx	Auditorium Mechanical - Auditorium
20	Level 04	North Mechanical Plan - Auditorium Roof
21		North Mechanical Plan - Classrooms and Labs
22		South Mechanical Plan - Classrooms and Labs
23	Level 05	North Mechanical Plan - Classrooms and Faculty Rooms
24		South Mechanical Plan - Classrooms and Faculty Rooms
25	Level 06	North Mechanical Plan - Classrooms and Faculty Rooms
26		South Mechanical Plan - Classrooms and Faculty Rooms
27	Level 07	North Mechanical Plan - Faculty Rooms & Dental Clinic
28		South Mechanical Plan - Classrooms and Faculty Rooms
29	Level 08	North Mechanical Plan - Faculty Rooms & Classrooms
30		South Mechanical Plan - Vision Lab & Classrooms
31	Roof	North Mechanical Roof
32		South Mechanical Roof

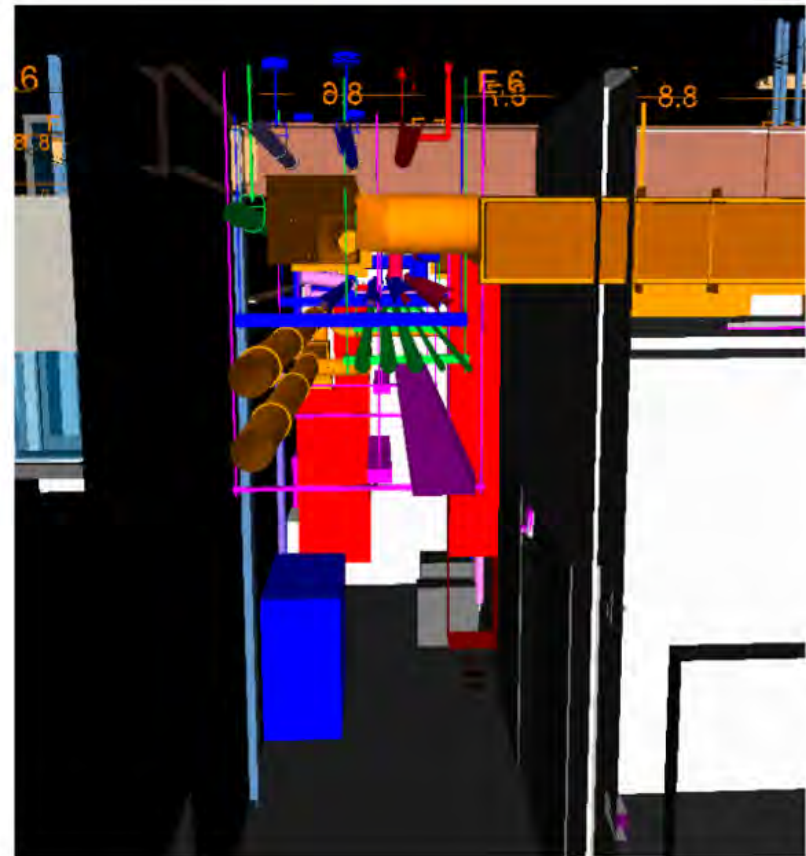
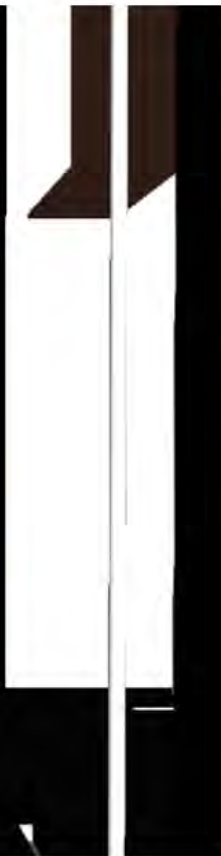
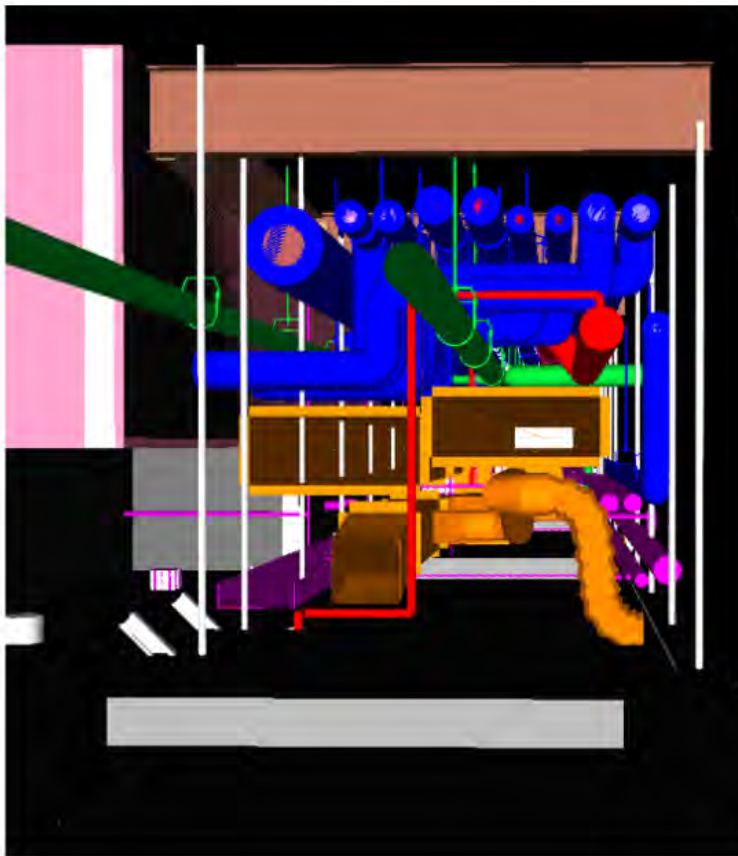


---

# CONSTRUCTION PHASE BIM PLAN

Performing Phase Allocations Above Ceiling

---



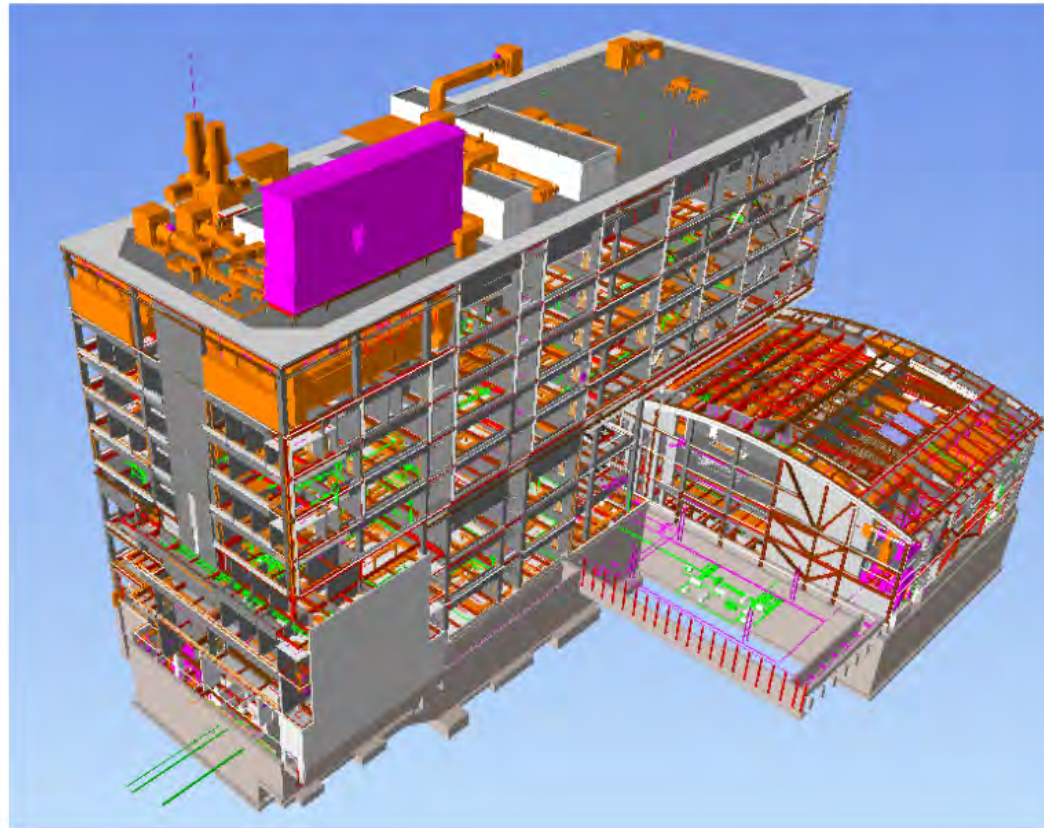


---

# DESIGN MODEL

## CUNY City Tech Academic Building

---

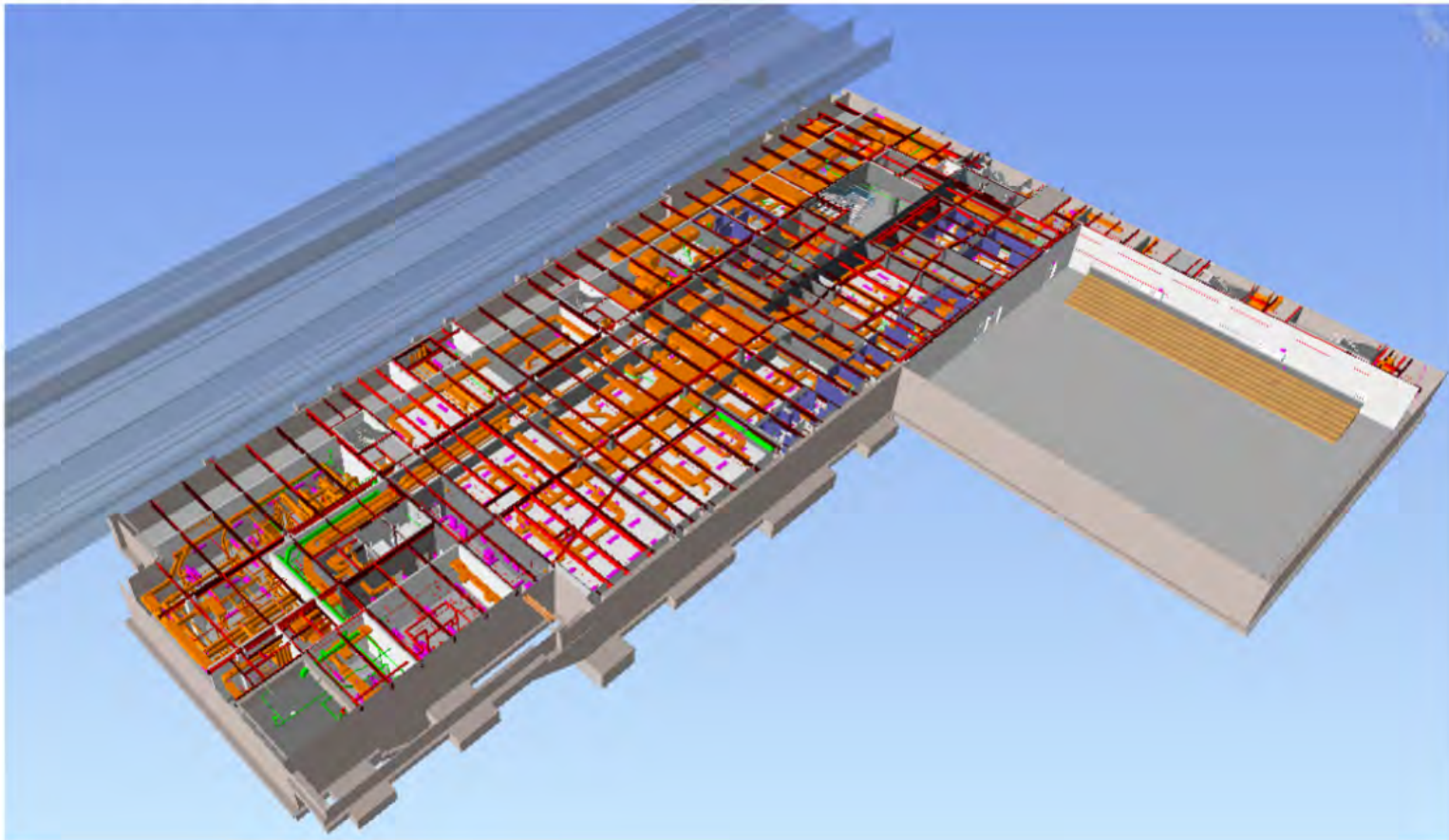


---

# DESIGN MODEL

## Cellar 2 Level

---

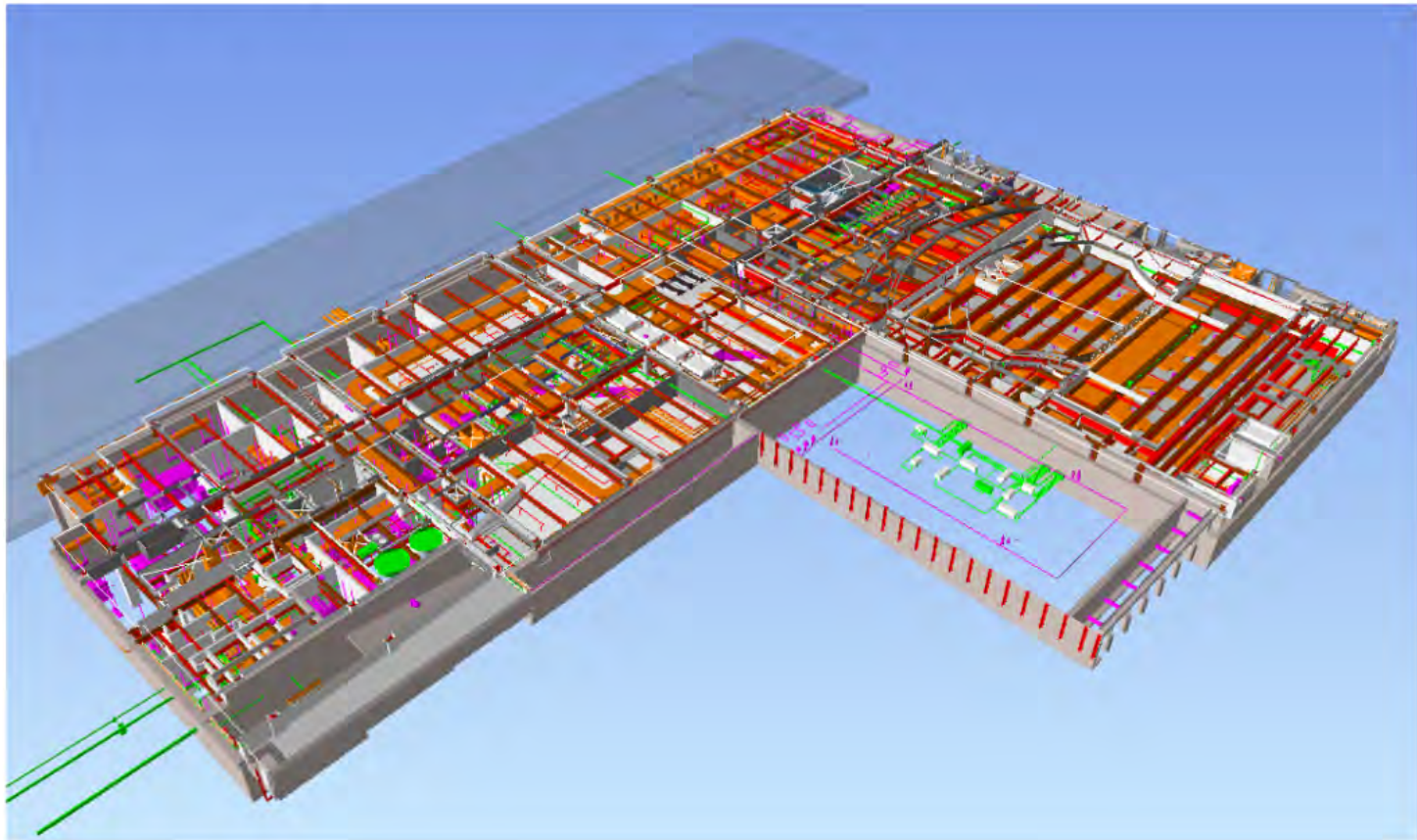


---

# DESIGN MODEL

## Cellar 1 Level

---

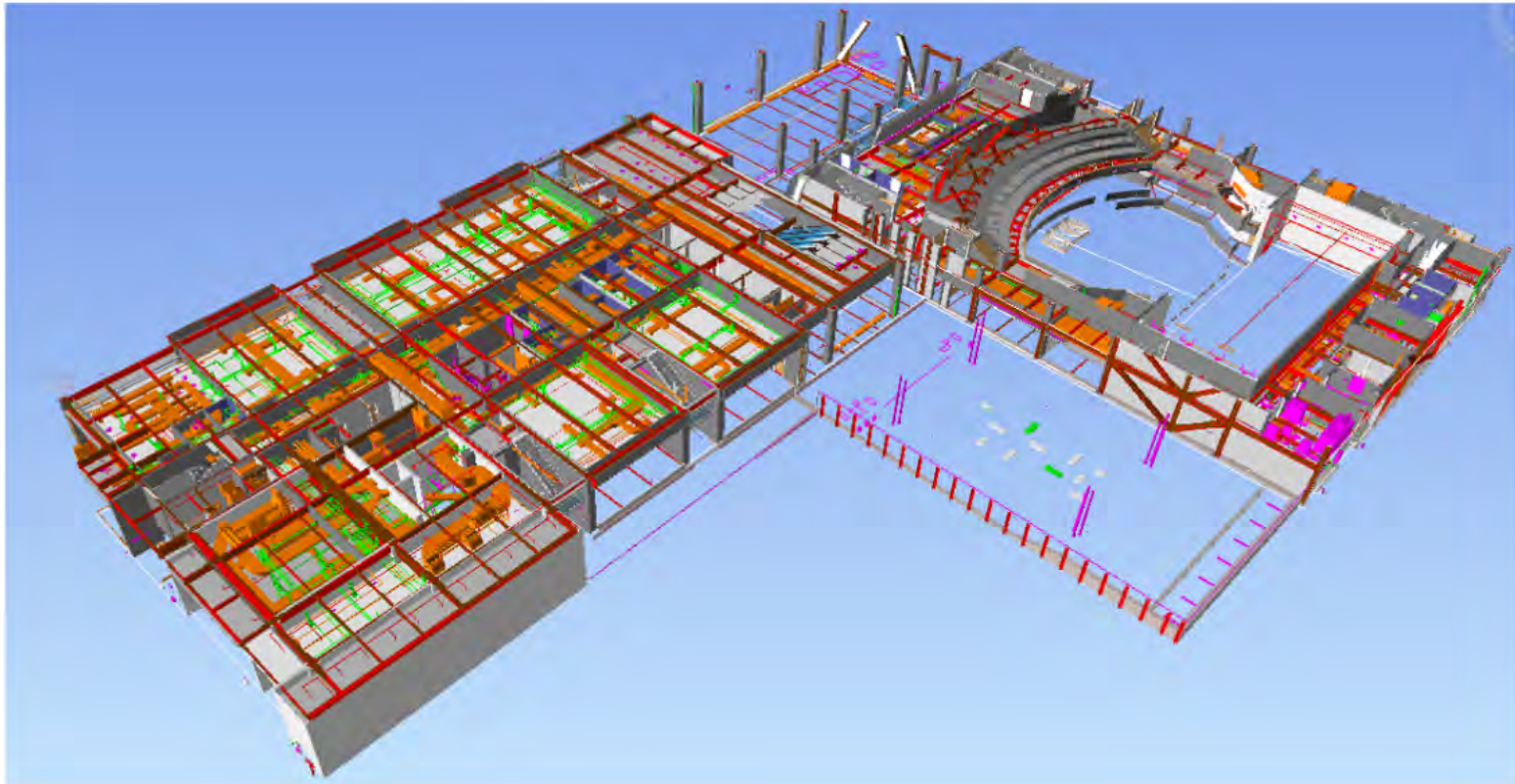


---

# DESIGN MODEL

## Level 1

---

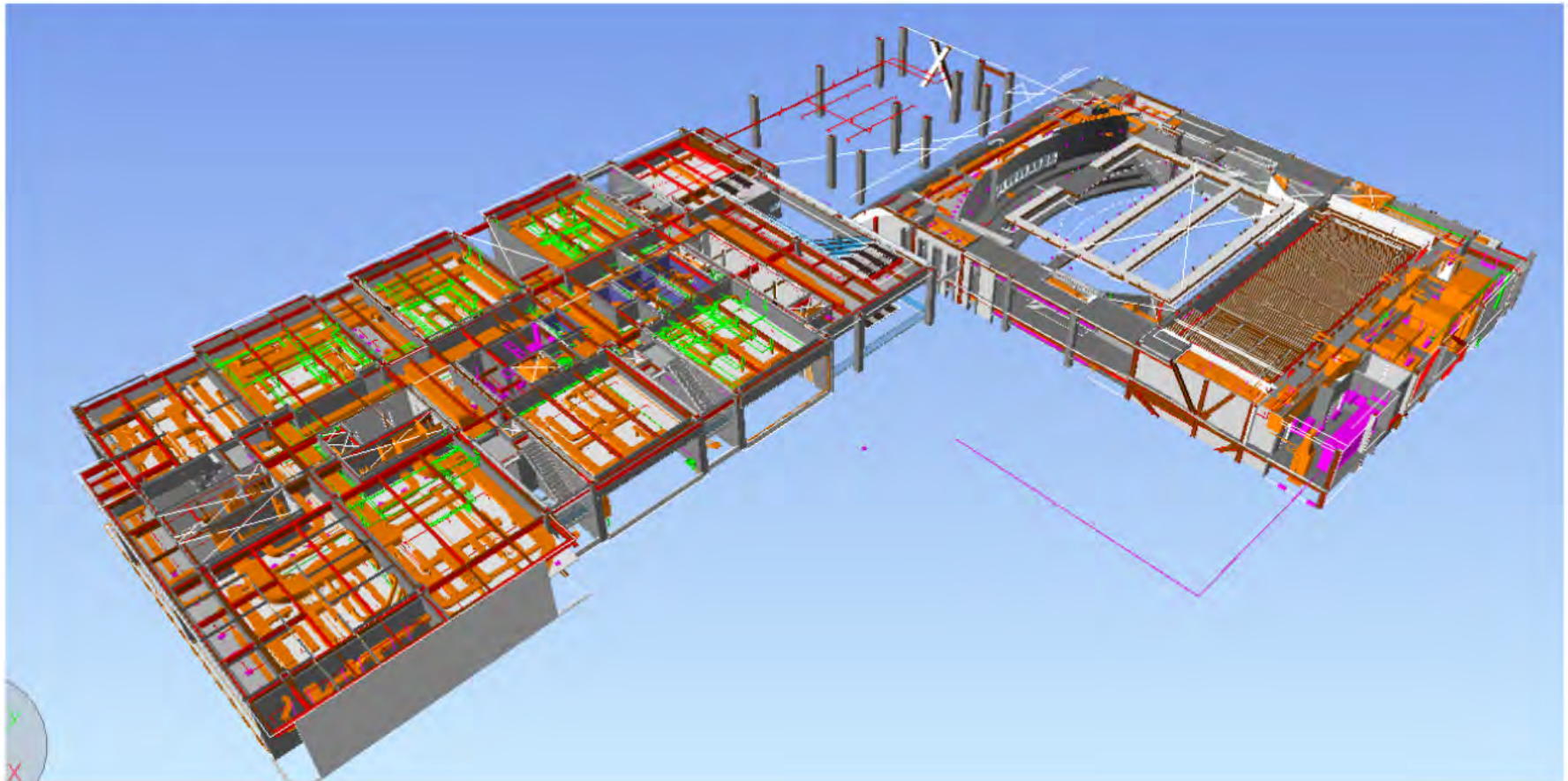


---

# DESIGN MODEL

## Level 2

---

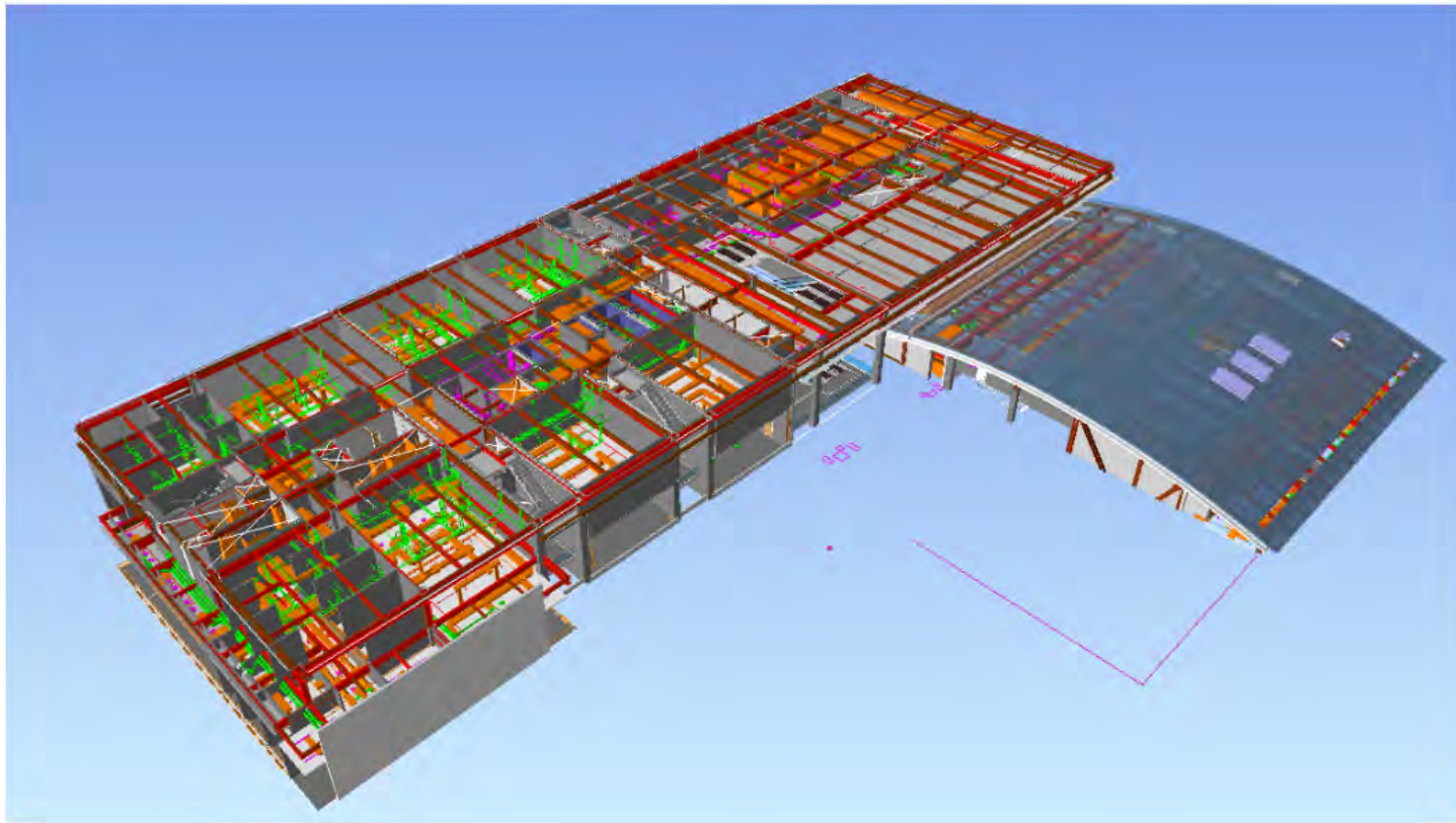


---

# DESIGN MODEL

## Level 3

---

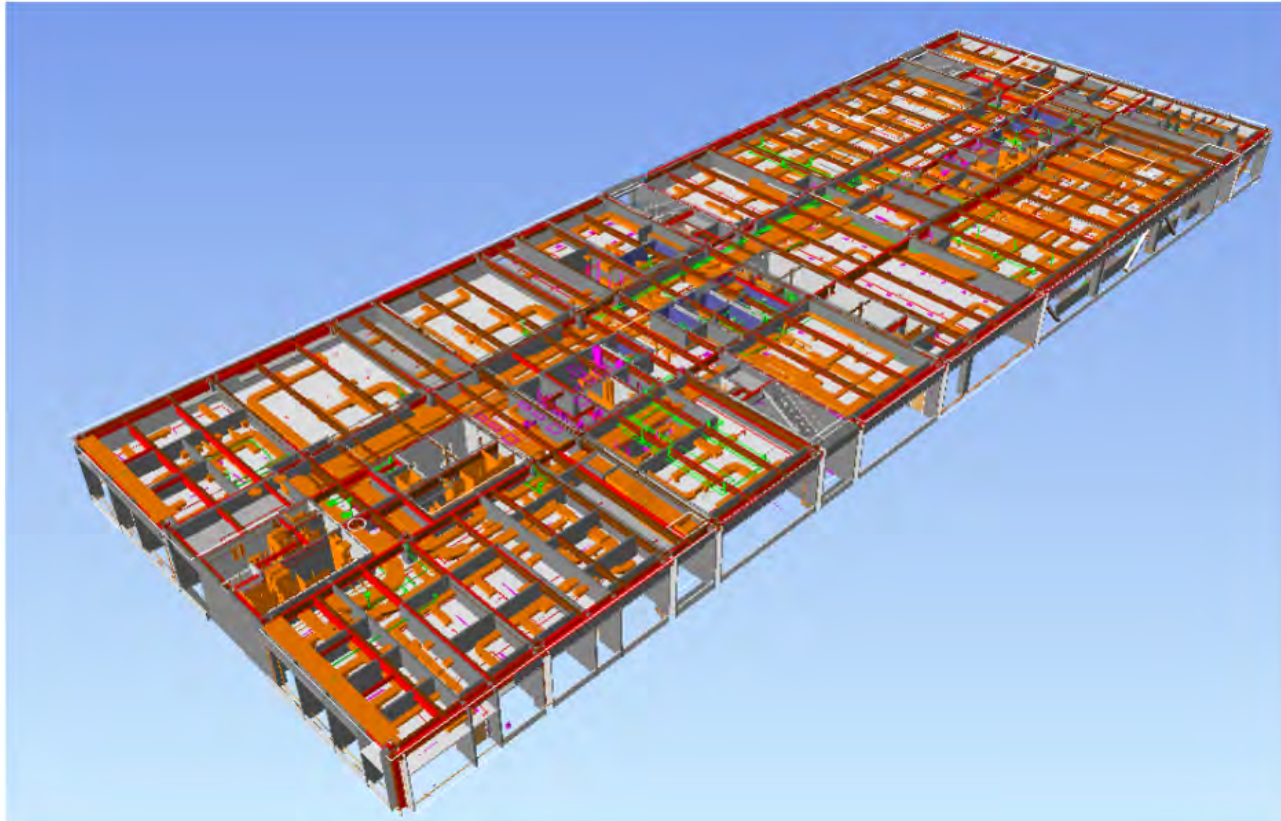


---

# DESIGN MODEL

## Level 7

---

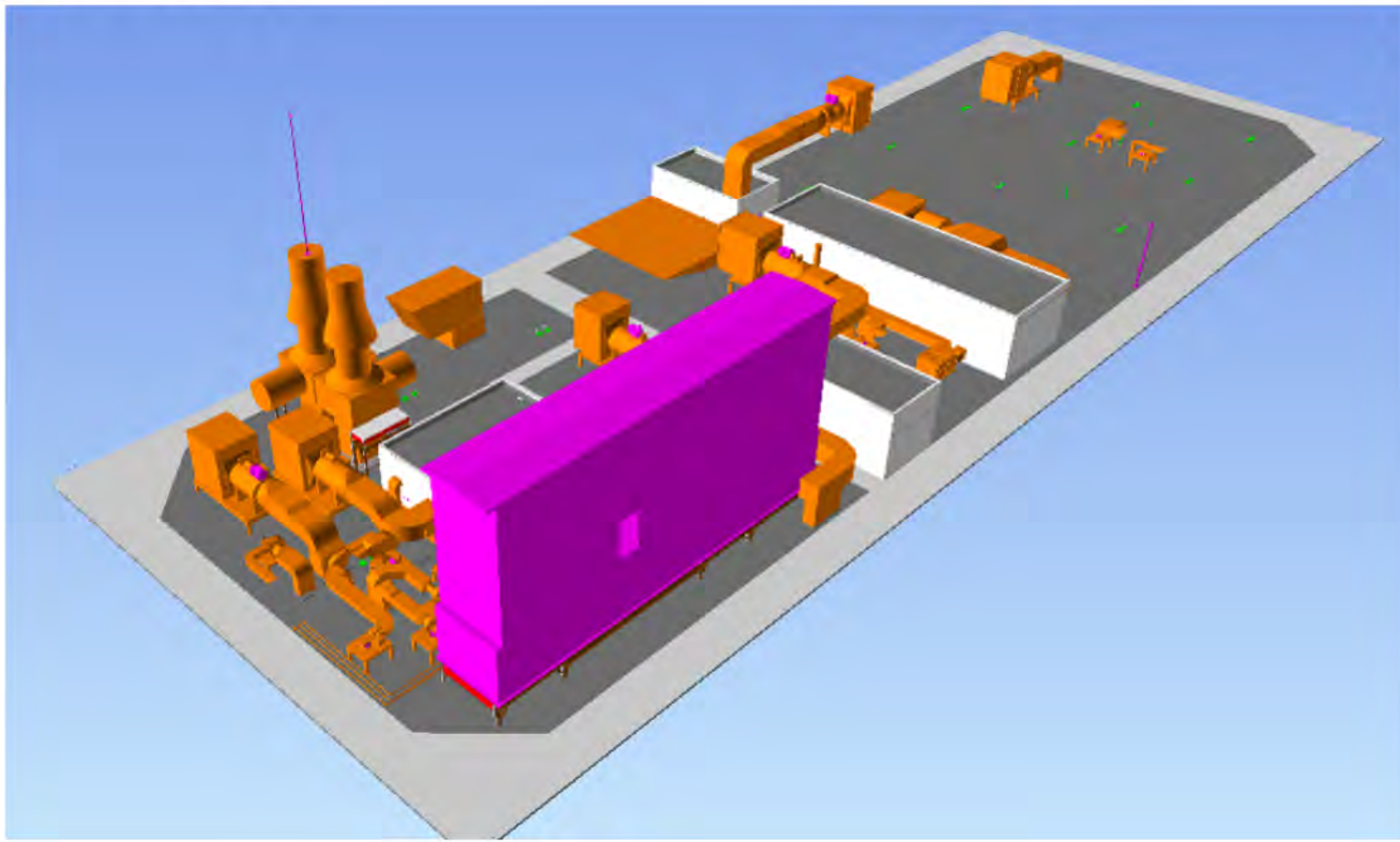


---

# DESIGN MODEL

## Roof Level

---





---

# PROCUREMENT PROCESS

---

- Competitive Public Bidding Process
- Awarded to Lowest Responsive & Responsible Bidder
- Multiple Bid Packages
- Bidding & Partnering Opportunities for Prime Contractors, Subcontractors, Vendors & Suppliers
- CUCF/CUNY Advertises all Prime Contracts on:
  - New York State Contract Reporter <http://nyscr.org>
  - New York City Record <http://a856-internet.nyc.gov/nycvendoronline/home.asp>
  - Minority Commerce Weekly <http://mcwbids.com>
- Register on our F. J. Sciame Website to Download Bid Packages & Bidder Lists for NYCCT New Academic Building Project at <http://cuny.sciame.com/>
- Register for CUNY/CUCF's Solicitation Outreach List at [www.cuny.edu/cunybuilds](http://www.cuny.edu/cunybuilds)



- Minority Commerce Weekly <http://newbus.com>
- Register on our E.J. Sciamé Website to Download Bid Packages & Bidder Lists for NYCT New Academic Building Project at <http://enr.sciamé.com/>
- Register for CUNY/CUCF's Solicitation Outreach List at [www.cuny.edu/enrbuilds](http://www.cuny.edu/enrbuilds)

---

# PRELIMINARY BID / AWARD SCHEDULE

## Fall / Winter 2014 & Spring 2015

---

- Site Security Guard
- Medical, Lab Equipment & Casework
- Theater Rigging, Draperies, Platforms & Lighting
- Paintings & Coatings
- Flooring
- Food Service Equipment
- Parking Control & LD Equipment
- Signage
- Exterior Site Work