

Logging of Glossy Black Cockatoo (*Calyptorhynchus lathami lathami*) habitat and Long-flower Beard-heath (*Leucopogon juniperinus*) plants - Colquhoun State Forest

Within the Colquhoun State Forest, VicForests' scheduled logging coupes 743-513-0006 and 743-506-0002 are currently (and have largely) been logged and coupe 743-506-0001 (adjacent to coupes 743-505-0002 and 743-505-0003) is currently "taped out" in preparation for logging (with coupe demarcation flagging tape placed in the forest) (**the Colquhoun coupes**).

Glossy Black Cockatoo feed trees and species records

Within and/or adjacent to each of these coupes likely Glossy Black-Cockatoo feed trees (with large clusters of discarded Sheoak cones scattered on the ground) have been recorded. Specifically, a site was recorded within a now logged area of coupe 743-513-0006 and numerous potential feeding trees have been recorded within coupe 743-506-0001 that will be destroyed, damaged and/or disturbed by logging operations.

Within coupe 743-506-0001 Glossy Black Cockatoo has been recorded by a Department of Environment, Land, Water and Planning staff member in 2015 and additional records of the species are also detailed nearby on the Victorian Biodiversity Atlas (VBA_FAUNA25) which, together with the record and habitat within coupe 743-506-0001, forms part of the species' most south-western global distribution.

Refer to Appendix A, B and C of this document for further details of Glossy Black Cockatoo species records and likely feeding sites at the Colquhoun coupes.

Long-flower Beard-heath plants

Within coupe 743-506-0002, which is currently been logged, and "taped out" coupe 743-506-0001, numerous Long-flower Beard-heath plants have been recorded in locations that will be destroyed, damaged and/or disturbed by logging operations in a manner that does not ensure the species is to be adequately protected during logging operations.

The Code of Practice for Timber Production 2014, Department of Environment and Primary Industries, The State of Victoria, 2014, through its incorporated documents, requires that Long-flower Beard-heath plants and population extents are identified "prior to roading, harvesting, tending and regeneration" and for each record and population extent of this species a 200m SMZ be established, as well as the mandatory requirement that the species is adequately protected from logging operations. Publicly available information indicates that no such SMZ's have been established and the species is not adequately protected at the Colquhoun coupes.

Refer to Appendix A, B and C of this document for further details of Long-flower Beard-heath plant locations at the Colquhoun coupes.

As a result of the apparent failure to identify these Long-flower Beard-heath plants and the full extent of the population of this species within 200m of the Colquhoun coupes, no SMZ's for this species appear to have been established within the Colquhoun coupe extents and logging has now occurred within the SMZ's that should have been established for this species.

VicForests must refrain from and the Department must restrain any further logging within 200m of Long-flower Beard-heath plants, the Department must ensure that VicForests and the logging contractors operating in the Colquhoun coupes are prosecuted if logging has occurred within 200m of Long-flower Beard-heath plants without the relevant SMZ's having been established, and VicForests and the Department should ensure that no further logging occurs within Glossy Black Cockatoo habitat including near the likely feed tree locations identified within the Colquhoun coupes.

APPENDIX A

Table 1. Biodiversity Conservation Values within/adjacent to coupes 743-513-0006, 743-506-0002, 743-506-0001, 743-505-0002 and 743-505-0003

Date	Type	Name	Map ID	Location
24/06/18	Sheoak cone castings	OB01CAC	OB01	55 H 584189 5817793
24/06/18	Sheoak cone castings	OB02CAC	OB02	55 H 584212 5817951
24/06/18	Sheoak cone castings	OB03CAC	OB03	55 H 584193 5817929
24/06/18	Sheoak cone castings	OB04CAC	OB04	55 H 584176 5817887
24/06/18	Sheoak cone castings	OB05CAC	OB05	55 H 584153 5817888
24/06/18	Sheoak cone castings	OB06CAC	OB06	55 H 584132 5817819
22/07/18	Sheoak cone castings	UNC01ACC	UNC01	55 H 583280 5819155
22/07/18	Sheoak cone castings	683	683	55 H 583286 5819299
22/07/18	Sheoak cone castings	UNC02ACC	UNC02	55 H 583261 5819316
22/07/18	Sheoak cone castings	UNC03ACC	UNC03	55 H 583356 5819373
22/07/18	Sheoak cone castings	UNC04ACC	UNC04	55 H 583364 5819392
22/07/18	Sheoak cone castings	684	684	55 H 583321 5819436
22/07/18	Sheoak cone castings	685	685	55 H 583371 5819449
22/07/18	Sheoak cone castings	UNC08ACC	UNC08	55 H 583407 5819387
22/07/18	Sheoak cone castings	686	686	55 H 583402 5819419
22/07/18	Sheoak cone castings	UNC09ACC	UNC09	55 H 583377 5819469
22/07/18	Sheoak cone castings	688	688	55 H 583394 5819453
22/07/18	Sheoak cone castings	UNC10ACC	UNC10	55 H 583437 5819464
22/07/18	Sheoak cone castings	694	694	55 H 583478 5819417
22/07/18	Sheoak cone castings	699	699	55 H 583368 5819170
22/07/18	Sheoak cone castings	700	700	55 H 583348 5819221
24/06/18	Long-flower Beard Heath	LOB01LJU	LOB01	55 H 584585 5818537
24/06/18	Long-flower Beard Heath	LOB02LJU	LOB02	55 H 584572 5818495
24/06/18	Long-flower Beard Heath	LOB03LJU	LOB03	55 H 584578 5818478
24/06/18	Long-flower Beard Heath	LOB04LJU	LOB04	55 H 584556 5818368
24/06/18	Long-flower Beard Heath	LOB05LJU	LOB05	55 H 584563 5818357
24/06/18	Long-flower Beard Heath	LOB07LJU	LOB07	55 H 584723 5818269
22/07/18	Long-flower Beard Heath	UNC05LJP	UNC05	55 H 583366 5819388
22/07/18	Long-flower Beard Heath	UNC06LJP	UNC06	55 H 583343 5819430
22/07/18	Long-flower Beard Heath	UNC07LJP	UNC07	55 H 583381 5819418
22/07/18	Long-flower Beard Heath	UNC11LJP	UNC11	55 H 583485 5819337
22/07/18	Long-flower Beard Heath	UNC12LJP	UNC12	55 H 583475 5819347
22/07/18	Long-flower Beard Heath	UNC15LJP	UNC15	55 H 583297 5819299
22/07/18	Orchid Species	UNC13OSP	UNC13	55 H 583610 5819034
22/07/18	Orchid Species	UNC14OSP	UNC14	55 H 583422 5819103



APPENDIX B

Figure 1(a). Likely Glossy Black Cockatoo Sheoak cone castings and feed tree at "OB01CAC" 55 H 584189 5817793



Figure 1(b). Likely Glossy Black Cockatoo Sheoak cone castings and feed tree at "UNC02ACC" 55 H 583261 5819316



Figure 1(c). Likely Glossy Black Cockatoo Sheoak cone castings at "UNC04ACC" 55 H 583364 5819392



Figure 1(d). Likely Glossy Black Cockatoo feed tree location at "UNC01ACC" 55 H 583280 5819155



Figure 1(e). Likely Glossy Black Cockatoo feed tree at "UNC01ACC" 55 H 583280 5819155



Figure 1(d). Long-flower Beard-heath (*Leucopogon juniperinus*) at "LOB01LJU" 55 H 584585 5818537



Figure 1(e). Long-flower Beard-heath (*Leucopogon juniperinus*) at "LOB07LJU" 55 H 584723 5818269

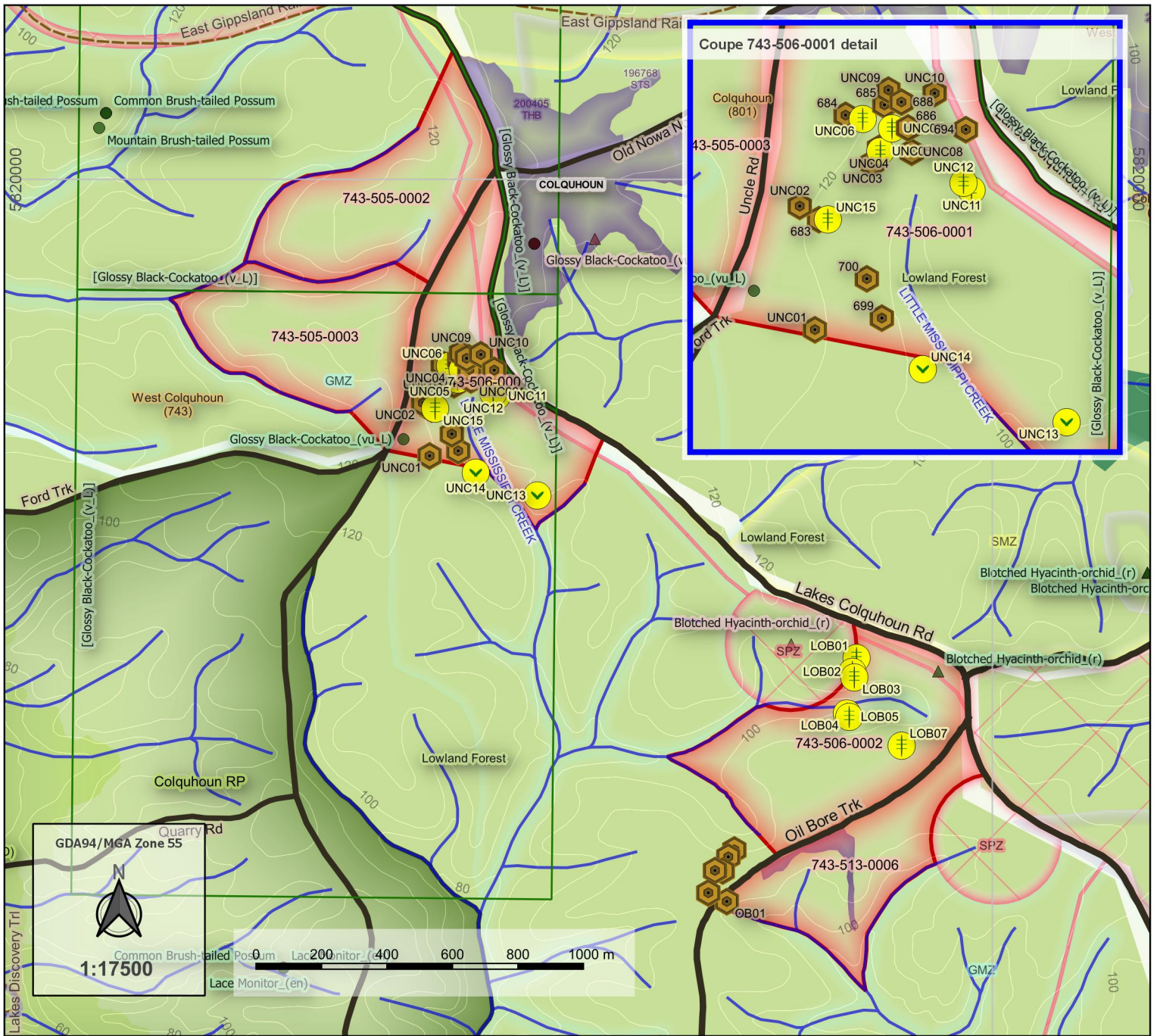


Figure 1(f). Long-flower Beard-heath (*Leucopogon juniperinus*) at "UNC05LJP" 55 H 583366 5819388



APPENDIX C

Figure 2. Colquhoun State Forest - Glossy Black Cockatoo and Long-flower Beard Heath investigation



Current Investigation

- Sheak cone castings
- Long-flower Beard Heath
- Orchid Species

Victorian Biodiversity Atlas

- VBA_FAUNA25
- VBA_FLORA25
- VBA_FAUNA100
- VBA_FLORA100
- VBA_FAUNA_1M_GRID

Logging Coupes

- Approved_TRP_Boundaries_January_2017

Prior Logging History (LOG_SEASON)

- 200405
- 200910

Forest Management Zones (FMZ100_V_ZONE [180711])

- SPZ
- SMZ
- GMZ
- Parks and Reserves (PARKRES)

Ecological Vegetation Classes (NV2005_EVCBCS)

- Damp Forest
- Lowland Forest
- Lowland Herb-rich Forest
- Localities

Roads

- Road

Watercourses

- Watercourse
- Contours

