

Annual Report 2013

About CERES	3
CERES Organisation Structure	4
Chairperson's Report	6
CEO's Report	8
Social Enterprises	10
Farm & Food	13
Education and Training	14
Site	16
Partnerships & Governance	18
Financials	20
Our People	22
Acknowledgements	24

CERES is a place where people come together to share ideas about living well together, and directly participate in meeting their social and material needs in a sustainable way. Through social enterprises, education and training, employment and community engagement, CERES provides the means by which people can build awareness of current local and global issues, meet some of their own economic needs, build resilience and create new ways of being.

Once a desolate wasteland, today CERES is a place of nature and beauty, inhabited by a vibrant and diverse community. We attract around over 400,000 visits to our site each year through our on-site education and training programs, Permaculture and Bushfood Nursery, Organic Market and Shop, Organic Café and the Merri Table. CERES provides opportunities for the community to come together in site groups or as volunteers, through community programs, venue hire and events.

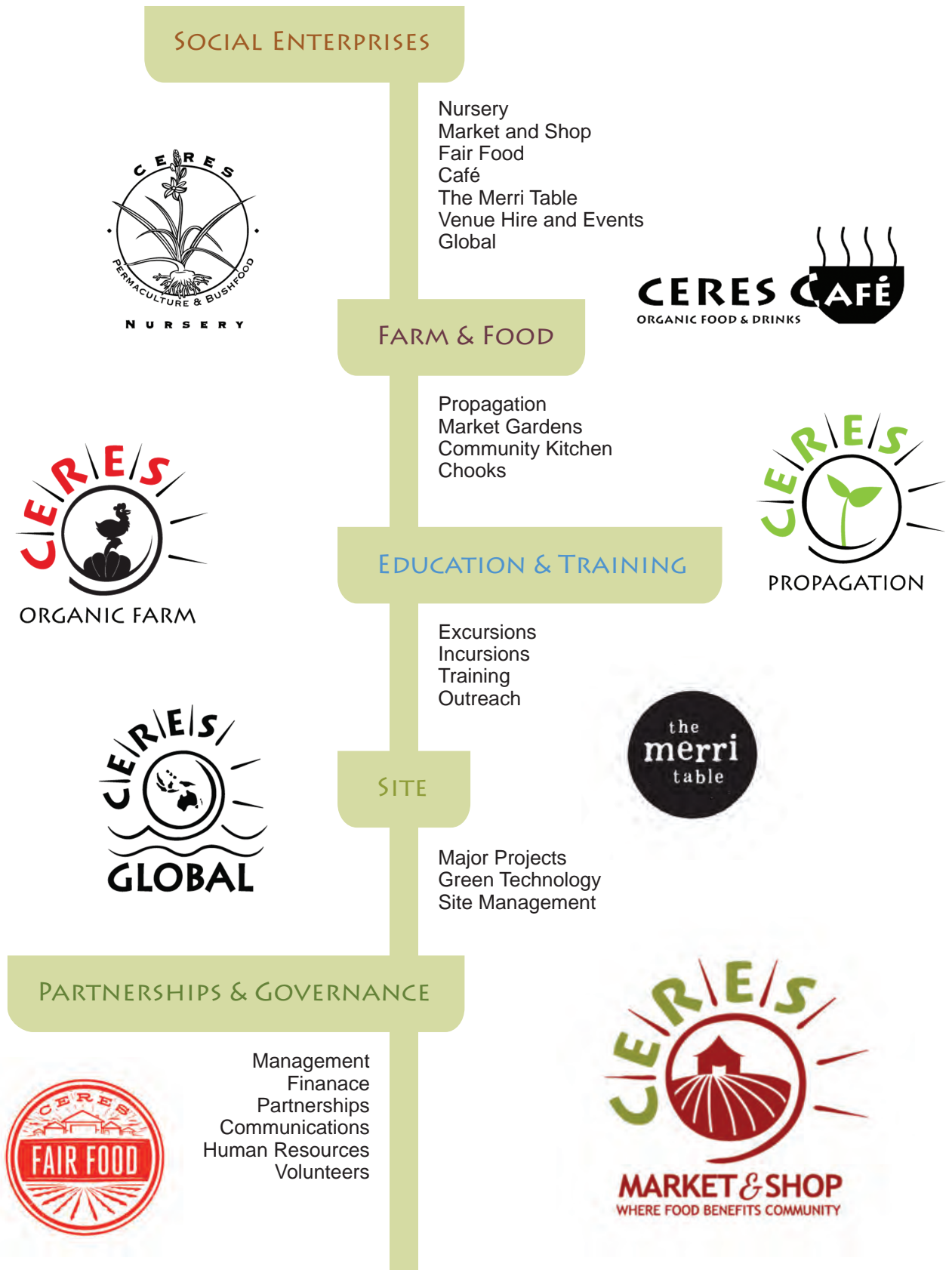


Photo: Locke Morley

We reach out to over 200,000 people through our work in schools across metropolitan Melbourne, and regional and rural Victoria. We have a growing following on social media, which further widens our audience and reach. CERES Fair Food delivers organic food and the sustainable food message across metropolitan Melbourne. CERES also reaches across the planet with CERES Global taking groups to India, Indonesia, Cuba and Aboriginal communities. CERES partners with a wide variety of organisations to bring about mutually beneficial outcomes.

CERES is a not-for-profit incorporated association that is managed by a voluntary Board of Management with representatives elected from the membership. The Board appoints a CEO to oversee the activities of the organisation. CERES activities are divided into seven portfolios, each with a senior Group Manager. Each portfolio includes a number of enterprises and projects, many of which are overseen by an Area Manager. Senior Managers and Area Managers oversee a number of different social enterprises and projects.







We made some significant and large decisions this year at CERES. The Board chose to seek an external operator for the Café. This is something that has been discussed around CERES for as long as I have been involved so it's interesting to consider why we took the step now.

Over the past few years the Board has learnt that we need to be very focused about what CERES devotes its precious energy to. What we have at CERES is unique and poor decision making by the Board or management can imperil its existence. We learnt that only too clearly with the attempt to run a restaurant. For many reasons the restaurant made a lot of sense, it aligned with many of our values and spoke to our desire to showcase organic produce. But we were ill equipped to compete in the intensely difficult hospitality trade. Ongoing losses from that at a poor time resulted in an unsustainable financial performance.

Since then we have thought very hard about what we are meant to be focusing our energy on. Consulting the 1,168 words in our formal purposes unfortunately does not make the choice any clearer.

The Board formed the view that CERES was here to show how the world can be a more sustainable place and we need to do everything we can to invest in that idea. Years ago that included running an organic Café and now it means doing everything we can to make Fair Food an even greater success.

A cursory glance at the Intergovernmental Panel on Climate Change's Fifth Assessment Report makes it clear that urgent action is still needed to address this threat to our society.

In light of that is running a café the right use of our resources? We decided that if we could find a special operator who would be faithful to our purpose, who could devote their skills and take the risk off us of running a café then that would be a better strategic decision for CERES in the long run.

This has caused much debate about what CERES is. This is an issue that is timely for us and our community to revisit. We will do that over the next year as we look at how to revisit and distil out purposes into a unifying vision that can guide the organisation into the future.

Hopefully through these actions we can lay the foundation for a financially sustainable organisation which has the resources and drive to change the world.



Robert Larocca
Chairperson

CERES has had another year of evolution as we continue to search for a sustainable business model that will support CERES' purpose and identity. As CEO, one of my responsibilities is to bring forth a business model that can deliver a secure financial position, in order to underpin the many delightful and important things that happen at CERES.

In order to make sense of this, in recent months I have been thinking about CERES as having three interrelated but distinct components:



Photo: Marianne Mills

Our community place where people can come together to seek sanctuary and connect with nature and each other;

Our sustainability education both formal and informal, which profoundly changes visitors' hearts and minds; and

Our enterprises which provide education, meet people's material needs in a sustainable way, and also generate the bulk of the funds on which CERES depends for our day-to-day survival.

Our place, education and enterprises together weave a complex web of interactions and involve many stakeholders, all of whom have their own notions of what CERES is, what it could be and perhaps also should be. And so, while considering organisational changes to strengthen finances, I have found that some proposals have directly confronted some people's deeply-held views about how a community-based not-for-profit organisation should behave and operate. This has been both interesting and challenging. Debates and differences of view are part of what makes CERES strong.

Unfortunately, a long term problem is that CERES' financial position is poor and limits what CERES can achieve. The management team and staff have worked hard to shift us from a loss-making position into break-even. Nevertheless, CERES continues to carry a significant historic working capital shortfall which hinders our ability to adequately resource some critical areas of the organisation.

Building our working capital is a slow process. CERES is a former landfill site that is covered in complex infrastructure which is expensive to maintain and subject to unexpected breakdowns on a regular basis, and our Site Team is under-resourced, and so, too, is our Communications Team. We have dreams and ambitions - the sustainability projects we would love to work on - if only we had spare resources! As a result, managing the flows of finances through CERES is a delicate balancing act. It seems that every dollar we earn through our enterprises could easily be spent four times over on making the site beautiful, or improving wages, or telling our story, or changing the world.

The CERES Board and senior management team have begun a journey of examining all of this complexity with the intention of renewing the relationship between our community place, our sustainability education and our social enterprises, so that CERES can prioritise activities in order to have the greatest possible impact. As Australia continues on the path toward dangerous climate change and our government fails to provide leadership, I have been reflecting on CERES' unique role in facilitating change. I would like to increase our reach and impact and make more change towards sustainability, but first we need to clarify what that unique contribution is and how it can be most powerfully engaged. I look forward to this ongoing conversation.

CERES' relationship with Moreland City Council has strengthened over the year. In August 2012 Council resolved to deliver some capital works on the site. The recent removal of the 'mound' in front of the CERES Van Raay Centre is the first stage of this work, with the Cafe reconstruction to follow in the first half of 2014. Council has also agreed to support a range minor capital works at CERES over the next few years, so we will see upgrades in several parts of the site to improve visitor amenity and enterprise efficiency. In addition, we have been working through a fairly lengthy list of regulatory issues, and I am pleased to report that many of these are either resolved or in progress. Our partnership with Council was celebrated at the recent Keep Australia Beautiful Victoria Sustainable Cities Awards, at which Moreland City Council (in partnership with CERES and MEFL) was awarded *Sustainable City of the Year* - very well-deserved by all!

That award was a clear reminder that the effort is worth it. CERES is many things to many people, and this year I have found CERES to be variously complex, challenging, delightful and magical. I am looking forward to furthering our transition to a sustainable business model so that CERES can continue to change the world, one seedling/organic food box/education program at a time.



Cinnamon Evans
CEO

CERES is in the business of change and has been for 30 years.
 What sets CERES apart is the way we steadfastly
 present positive climate change solutions.

CERES has found ways to engage ordinary people, doing every day things to contribute to a cleaner, fairer future. Our social enterprises demonstrate that new ways of doing things is affirming on an individual, household and community level. They also provide a crucial point of contact for CERES visitors and allow the general public to experience a working model of sustainability. CERES enterprises include:

- Permaculture and Bushfood Nursery
- Market and Shop
- Fair Food
- Café
- The Merri Table
- Venue Hire and Events

Permaculture and Bushfood Nursery

The Nursery is one of CERES most consistent performers. Over the past few years it has gone from strength to strength with the 2012 spring season proving to be the busiest in the Nursery's history. The Nursery provides a unique alternative to mainstream horticulture, with a carefully considered range of products and a commitment to community education from the skilled and passionate horticultural team. The staff work with customers to enable them to create sustainable, productive and inspirational gardens and provide accurate, reliable and current advice. The loyalty of our customers is testament to our great service.

The Market and Shop

The Market and Shop have continued to source and supply the best organic produce, primarily from Victoria but some from interstate (e.g. bananas). The Market in particular was adversely affected by the lead contamination issue and spent all of 2012 trying to regain customer loyalty. The second half of the financial year (early 2013) saw an improvement for market with a lift in both customer numbers and average ticket sales. Due to a DHS grant the Market was able to replace the mulch with a sleeper and lilydale topping surface and a new fence along the chicken coop, giving the Market space a much needed aesthetic improvement. The Market extended trading hours to match the Shop, both enterprises now trading Wednesday – Saturday.

Fair Food

Fair Food, our organic food delivery business, is at another very exciting stage of its development. Three years after it's launch and nine months after introducing carbon-neutral direct-to-your-door home delivery Fair Food met its budget targets and made its first yearly profit. Delivering to over 850 households each week Fair Food is now one of the largest buyers/retailers of organic produce in Victoria. We are strongly local and have great relationships with our farmers who we stay with throughout the growing seasons. Employing 20 workers from 11 different nationalities, many who have come to Australia as asylum seekers, Fair Food is an exciting and diverse yet highly cohesive workplace. We're proud of our communications with our customers via social media and email and our strong customer service. In the next year Fair Food is working to strengthen our logistics capability and our customer retention in order to keep growing our social enterprise.



Photo: Marianne Mills

Café

The Café has had another solid year with large numbers of people being served. However, for many years the Cafe has operated at break even or at a loss, despite the best efforts of staff. Further, the existing Cafe infrastructure is deteriorating and in need of major repair. Moreland City Council will contribute some funds for reconstruction, and the CERES Board is partnering with an independent operator who will invest in the fit out of the new building, operate the business in line with CERES core principles and return funds to support CERES. The new Cafe, opening in Spring 2014, will be a beautiful, sustainable facility that will provide excellent local, seasonal, organic food to our visitors and community.

Merri Table

The Merri Table continues to grow into its role as a valuable space for the community to engage and celebrate in a way that is in line with the values that CERES espouses; linking growing, cooking, eating and learning - to put food back at the centre of our lives in a way that benefits the community and enriches lives.

Being a unique organic catering and venue service, this year The Merri Table has hosted everything from christenings to wakes, with birthdays, weddings, corporate lunches and community dinners in between. With over 7,000 people engaging with our catering service this past year, The Merri is steadily becoming the venue of choice for other community, not for profit and corporate organisations, as well as being an invaluable space for CERES hosted events and celebrations.

Some highlights for the year include a beautiful Harvest Festival community dinner, a 'Twisted Tucker' native bushfoods event hosted by Sustainable Table, Gene Ethics celebrating their 20th birthday with us and the Merri's Picnic in the Park - the premier event for 2012's Melbourne Food and Wine Festival's Spring Graze season.

Venue Hire & Events

Venue Hire continues to be a strong performer. Many community organisations, businesses and individuals use spaces at CERES for meetings, planning days, movie nights, book launches and workshops. The CERES Van Raay Centre has been used for both community-hosted and CERES-hosted events. The Learning Centre, Multicultural Classroom, Village Green and Namalata Willem are all popular venues for cultural, spiritual, music and film events, family gatherings, weddings and fundraising fêtes. This year has seen an increase in use by internal bookings, with students participating in permaculture, urban farmer and other training courses benefitting from using the spaces. Other highlights for the year include the prestigious Melbourne Food and Wine Festival Masterclass and 243 different community user groups.

The iconic CERES Harvest Festival was once again a great success this year, made so by the (mostly) voluntary commitment of staff. We discussed and took the decision to rethink how we remember the Return of the Sacred Kingfisher and have scaled down the size of the one day festival, but further embedded the story into onsite education programs and beautiful signage. Simultaneously we have increased the number of food based and other inclusive community events on site, such as dinners in the Merri. Continuing and evolving these events plays an important role in bringing the community together to celebrate the achievements of environmental action.

CERES Global

Building on our existing relationships with communities in India, Indonesia, and Arnhem Land, CERES Global has added trips to Timor and Cuba which have received great interest from our local CERES community. Our commitment to return to each of these communities annually provides greater cross-cultural understanding, develops friendship and rapport, and enables everyone involved the ability to share skills to meet social and sustainability challenges faced both locally and internationally.



The CERES Community Food System demonstrates how an urban city farm can anchor a community and contribute to the local economy, provide an ethical market place as well as employment and income opportunities for farmers, producers, teachers and food workers.



CERES Propagation continues to grow and supply organic vegetable seedlings to CERES Market Gardens, CERES Nursery and several external nurseries. **Honey Lane and Merri Creek Market Gardens** provide inspiring examples of urban agriculture and a resource for training groups, with the produce sold weekly to our Organic Market, Café and Fair Food. Each of our Farm enterprises operate a thriving and highly valued volunteer program, hosting a growing number of passionate community and corporate volunteers each week.

Recent funding has seen the completion of our disused farm paddocks into the beginnings of an edible food forest, with the installation of new boundary fencing, runs for our flock of chickens and a hand painted 'Food Forest' sign completed by local primary school students.

Some highlights for the year on the farm include local food champion and chef, Matt Wilkinson (Pope Joan) using produce grown in Honey Lane Market Garden and freshly laid CERES eggs for his talk and cooking demonstration at the Melbourne Food and Wine Festival; and being the proud recipients of a Highly Commended Green Lifestyle Award (Food - Company) for our Community Food System. **The Seven Stars** women continue to share their food culture with the CERES community through our catering menus and their house-made products, which are available at the CERES Shop, Market and Fair Food. This year saw an increase in demand for their traditional pastries and dips.

CERES Community Kitchen provides opportunities for diverse groups from the community to cook and share food through education, skill sharing and celebration. The kitchen is used by CERES Training Programs and community groups for social cooking, team building workshops, celebrations and classes. The Community Kitchen exists within a growing network of community and sustainable food organisations and projects and has a particular focus on teaching people cooking skills to develop self reliance, joy and greater independence from an industrialised food system.

The Community Kitchen has grown enormously since it opened in May 2012. Highlights of the last year include the highly successful Community Food Projects Forum, the initiation of a regular Mamabake group, CERES facilitated team building days for corporate and not for profit organisations, the first CERES member's Community Dinner, our Winter Solstice dinner and growing interest from the community. We look forward to seeing some local and ethical micro-enterprises start-up in the kitchen next year.

CERES Education has transformed in the past twelve months to bring together CERES

- Excursions
- Incursions
- Training
- Outreach

Our dedicated and highly-experienced team of educators provide a range of inspiring programs for early childhood centres, schools, tertiary institutions and individuals.

CERES Excursions delivers innovative environmental, sustainability and cultural programs to over 60,000 school students, TAFE and university students and adult tour groups each year. We focus on delivering programs that directly relate to the Victorian and National Curriculum, but also push student's awareness, knowledge and actions towards a more sustainable world, both culturally and environmentally. In a nutshell we aim to change lives, and from the feedback we get, we often do.

2012-13 has seen an increase in our cultural programs, which we are very excited about. It re-affirms that we are delivering programs and services that are directly relevant to the school curriculum, and proves that we continue to be a leading provider of unique and engaging cultural exchanges. The success and growth of our Cultural Programs culminated in CERES Excursions winning the Keep Australia Beautiful Victoria (KABV) Award for "Cultural Heritage: Indigenous Program - living heritage".

2013-14 will see CERES Excursions start to ramp up our programs around food waste and food production, E-Waste, energy independence and base load renewable technology. We look forward to an exciting year ahead.

CERES Incursions offers a wide range of sustainability education workshops that are carefully designed to engage and motivate students from early childhood to upper secondary school. In 2012-2013, Incursions reached over 9500 students in schools across Victoria, while the Energy Trailer reached a further 8900 people through community events. Piloted in late 2009, our 'Do More with LESS' student leadership program received significant funding for development. It is anticipated this program will become our flagship program for 2014. This year, in partnership with Tomorrow's Leaders for Sustainability we delivered a fully subsidised Community Leadership Course - empowering 23 participants to make their community project ideas a reality.

CERES Training embraces life-long learning and is strongly committed to providing access for all. We run accredited vocational training in horticulture and hospitality for disadvantaged youth and deliver tailored programs to young people with a disability. CERES Training is part of the Learn Local network, providing training pathways and re-skilling opportunities to marginalised individuals.

Our Spring and Autumn workshop programs continue to grow in popularity with over 600 people engaging and learning new skills. This year saw an expansion of our cooking workshops due to access to our new Community Kitchen, and our Permaculture Design Course and the Complete Urban Farmer short course continue to gain in popularity each year.

30 asylum seekers successfully completed the 'Putting Down Roots' program - a 14 week gardening and food security program for vulnerable migrants to develop their sustainable gardening knowledge delivered in partnership with the Red Cross and Cultivating Community. Many participants have gone onto create their own community food sharing and growing network, with one participant gaining employment at our Fair Food enterprise.

CERES Outreach takes the CERES message directly to the community, primarily through the ResourceSmart AuSSI Vic framework. ResourceSmart AuSSI Vic provides a holistic approach to sustainability by integrating educational, environmental, social and economic outcomes. Schools are supported to develop a 'whole school approach' to sustainability by weaving it into the fabric of everyday school and community life. In 2012-2013, CERES delivered ResourceSmart AuSSI Vic to over 300, reaching over 128000 students and over 10000 teachers. We also engaged with a number of partners including local government, education organisations and other eco centers to create a regional consortia that supports school sustainability programs.

The Outreach team have shared the story and message of CERES on a state and national level by presenting workshops at major environmental education conferences. We lectured at universities, gave presentation at teacher networks and gave consultation advice to other organisations. Our Outreach educators have also shared knowledge and skills on an international level with visits to Thailand and South Korea plus hosting visitors from India and Indonesia.

The upgrade of the CERES Sustainability Hub means the website is now a one-stop-shop for schools to access CERES Education services, resources and stories that support sustainability programs and projects in schools.



Nestled in a bend of the Merri Creek, CERES provides a natural oasis for our many visitors. CERES also demonstrates innovative landscape design, ecological building practice and green technology in action.

The site is managed by a small team of staff who all supervise volunteers in the areas of horticulture, maintenance, green technology and design. All staff at different times also manage corporate volunteers. A great big thankyou to all volunteers who help look after and improve the CERES site.

Major landscape improvements this year have included:

- Earthworks in the CERES Square (to be planted out by next June);
- A graded pathway beside Honey Lane Farm;
- Rough earth shaping of the area north of the Merri Table; and
- Garden beds in the Resource Hub area



Plants are being propagated on site for our gardens, and this year approximately 3000 plants were planted. The Village Green is the greenest it has been for many years through some turf management changes. The Playspace adjacent to the Cafe has a new look through the implementation of the winning design of the 13 Logs competition, clearly appreciated by our younger visitors. This project was coordinated by volunteers, and we thank them.



The Market area has been paved, improving access for people with mobility issues and movement of goods by trolley. We received a donation of 300 railway sleepers which were installed by CERES staff and an earth moving contractor and numerous volunteers. The CERES Cafe enjoyed a minor upgrade to their front of house including opening up the customer service area, a new counter and equipment.

CERES hosted an artist in residence this year and we enjoyed an exhibition of his work in the new Synergy Gallery.

At the beginning of the year we launched a number of new green technologies, and since then we have been working on commissioning some of the more experimental and complex projects including the biogas system, solar thermal dish, solar cooker and village green grey water treatment system.

Partnership activities are substantial. We continue to participate in an electric vehicle trial and installed a second charge point in response to demand. We are working with energy partners to improve the Energy Park performance and install LED carpark lights. We trialed a commercial coffee machine switch designed to save energy. We hosted a number of design students who explored and interpreted our solar thermal, solar cooking, composting and biogas systems. We are in conversation with further partners regarding strategies and technologies to reduce our environmental impact, and in the future we hope to demonstrate a domestic scale geothermal heating and cooling system. Over the next two years we will be implementing a major upgrade of water projects on the site, with new funding from the Victorian State Government.

We have updated our OH&S policy this year, and improvements on site include several new barrier fences, fencing around the Recycle Yard, a safer pathway down Honey Lane and improved exterior lighting. A key focus in the coming year will be the Environmental Management Plan with attendant improvement plans. This will enable CERES to report on our own sustainability performance.

The Governance area provides the glue that keeps all the many and varied parts of CERES working together productively and harmoniously. This area includes management, finance, partnerships, communications, human resources, volunteers & CERES Global and events.

Management

CERES Board has met regularly throughout the year and continues to provide high-level leadership for the organisation. All Board members are actively involved in subcommittees which facilitate the day-to-day operations of CERES..

Finance

The Finance Team continue to keep track of CERES finances, ensure compliance with requirements and provide regular reports to the Board and CERES managers. We have successfully migrated to a new accounting software, which has improved visibility for managers.

Partnerships

The key activities of this role are fundraising, managing corporate volunteering, grant and funding proposal writing and working with partners on in-kind projects and support. Highlights of this year include hosting 700 corporate volunteers, being successful in a grant application to the Victorian Government's Living Victoria Fund to enable the full implementation of Integrated Water Cycle Management at CERES, wonderful messages of support from donors to our annual appeal and continuing to work with our partners Delta Energy Systems and EcoStore.

Over and over again we encounter goodwill towards CERES. We are increasingly recognised in the broader community and connection to us is seen as relevant and desirable. Partners bring enthusiasm and respect for CERES and it is our pleasure to be able to facilitate this connection.





Communications

For financial reasons, CERES Communications Team is much reduced once again this year, with only one person part-time from July. Her focus has been on gaining an overview of organisation-wide internal and external communications, overseeing skilled volunteers and increasing engagement with the CERES community via email updates, the website and Facebook. The Farm and Training team, SEOG and Fair Food are actively engaged in communication as part of their regular operations.

Human resources

CERES continues to be supported by a legal firm to develop our HR management capability. The CERES Enterprise Agreement 2010 continues to be the foundation of our HR system, and we continue to build our HR information, policies and practices.

Volunteers

For financial reasons, CERES does not currently employ a dedicated Volunteer Coordinator. The regular unskilled volunteering activities are being managed by the areas providing the trainers for those activities. Skilled volunteers are being sourced through our website and Facebook with good success. We regularly host corporate groups for skilled and unskilled volunteering, and these volunteers have made significant contributions to the implementation of site projects and business improvements.

Assets and Liabilities Statement
as at 30 June 2013

	2012	2013
Current Assets		
Cash and Cash Equivalents	387,103	319,550
Receivables	90,641	152,467
Inventories	148,000	168,140
Prepayments	15,337	11,630
Total Current Assets	<u>641,081</u>	<u>651,787</u>
Non Current Assets		
Plant and Equipment	3,396,486	3,374,673
Total Non Current Assets	<u>3,396,486</u>	<u>3,314,673</u>
Total Assets	<u>4,037,567</u>	<u>3,966,460</u>
Current Liabilities		
Payables	687,831	875,431
Provisions	344,000	381,000
Hire Purchase Commitments	28,259	34,185
Other	332,278	163,154
Total Current Liabilities	<u>1,392,368</u>	<u>1,453,770</u>
Non Current Liabilities		
Payables	103,400	0
Provisions	29,000	10,000
Hire Purchase Commitments	47,511	29,169
Total Non Current Liabilities	<u>179,911</u>	<u>36,169</u>
Total Liabilities	<u>1,572,279</u>	<u>1,492,939</u>
Net Assets	<u><u>\$ 2,465,288</u></u>	<u><u>\$ 2,473,521</u></u>
Members' Funds		
Retained Surplus	2,465,288	2,473,521
Total Members' Funds	<u><u>\$ 2,465,288</u></u>	<u><u>\$ 2,473,621</u></u>

**Income and Expenditure Statement
 for the year ended 30 June 2013**

	2012	2013
Revenue from Ordinary Activities	8,155,322	8,247,497
Expenses from Ordinary Activities before Depreciation	<u>8,070,252</u>	<u>8,143,815</u>
Surplus (Deficit) from Ordinary Activities before Depreciation	85,070	103,682
Less Depreciation	124,254	135,713
Surplus (Deficit) from Ordinary Activities after Depreciation	<u>(39,184)</u>	<u>(32,031)</u>
Grant Funded Capital Improvements (included in Expenses above) transferred to Non Current Assets	142,000	40,264
Surplus (Deficit) for year	<u>\$102,816</u>	<u>\$8,233</u>

(Extract from audited financial report)

Treasurer's Report

The past 12 months have seen significant improvements behind-the-scenes at CERES with the new finance system in place and more timely reporting available to Managers and Board members. We continue to monitor results closely and more frequently thanks to the new systems.

Another challenging year is evidenced in these figures and in the Auditor's report. Despite an increase in revenue and surplus (before depreciation) our cash balance has declined and our working capital position has not improved as quickly as we had hoped. The seasonality of the enterprise revenue streams is an important consideration from a cashflow perspective as we manage tax obligations and loan repayments.

We are looking forward to great results again from our enterprises including the continued growth of Fair Food.



Thomas Dobson
 Treasurer



CERES Board

Robert Larocca	Chairperson
Josh Floyd	Deputy Chairperson/ Public Officer
Thomas Dobson	Treasurer
Sue Lewis	Secretary
Peter Cock	General Member
Anne Herbert	General Member
Davis Stone-Resneck	General Member
Cr Meghan Hopper	Moreland City Council Representative
Erin Saar	Site Group Representative
Sieta Beckwith	Staff Representative
Cinnamon Evans	CEO

Senior Managers

Cinnamon Evans (CEO)
Sieta Beckwith
Kirsty Costa
Nick Curmi
Chris Ennis
Judy Glick
Melissa Lawson
Lorna Pettifer
Nicolas Porter

Area Managers

Eric Bottomley
Luisa Brown
Laurel Coad
Barbara Cimino
Shane French
Belinda Kennedy
Kieran Kilmartin
Lydia McPartlin
Kate Mills
Beck Morley

130 Staff
300 + Volunteers



CERES thanks all partners who have provided financial support to many of the projects and activities mentioned in this report.

Leading Partners

Moreland City Council

Sustainability Victoria

Principal Partners

Catholic Education Office

Delta Energy Systems

Victorian Government Department of Education and Early Childhood Development

Victorian Government Department of Human Services

Key Partners

Ansvar Insurance

BlueSun Group

Caterpillar Foundation

EcoStore

Holding Redlich

Inner North Community Foundation

Jack Brockhoff Foundation

John T Reid Charitable Trusts

Lord Mayors Charitable Foundation

Sidney Myer Fund

Scanlon Foundation

Trawalla Foundation

Victorian Government Department of Planning and Community Development

Victorian Government Electric Vehicle Trial

Supporting Partners

Carbonetix

ChargePoint

Marian & EH Flack Trust

Moreland Energy Foundation Limited

Planet Savers

Slater and Gordon

Tomorrow's Leaders for Sustainability Inc.

Victorian Association of Environmental Education (VAEE)



Thanks to all those who supplied images.

CERES Membership

Individual \$60 Individual concession \$30*

*Students, pensioners or Health Care Card holders

Card number:

Household \$80

Not-for-profit organisation \$150 Business \$300

Lifetime \$750 (one-off payment)



Donate to CERES

I would also like to support CERES by making a one off tax deductible donation:

\$20 \$50 \$100 \$250 \$500 Other \$

To set up regular donations or to make an online donation visit www.ceres.org.au/donate

My details

Name:

If a household member, second name on card:

Address:

Postcode: Suburb/Town:

Email:

Phone: (Home/Work/Mobile)

DOB:

I authorise CERES to debit \$ from my: Visa Card Mastercard

Card number: ---

Expiry: / (MM / YY)

Name on card: Signature:

Please make cheques payable to CERES Community Environment Park

OFFICE USE ONLY

Date paid:

Processed and sent:

EFT/CC Number:

Initials:

design:
Christine Cooke
Create Caring Communities
email: ccooke@optusnet.com.au
phone: 614 1255 1846

CERES COMMUNITY ENVIRONMENT PARK

Corner. Roberts and Stewart Streets,

Brunswick East, Victoria, 3057

phone: (03) 9389 0100 | fax: (03) 9389 0101

web: www.ceres.org.au

email: ceres@ceres.org.au

facebook: www.facebook.com/CERES.Environment.Park

twitter: [@ceresbrunswick](https://twitter.com/ceresbrunswick)