

AUT

AUT 2016

HIGHLIGHTS & ACHIEVEMENTS



CELEBRATING SUCCESS AT
AUCKLAND UNIVERSITY OF TECHNOLOGY

AUT 2016

HIGHLIGHTS & ACHIEVEMENTS

Edited by

Gemma Brooks | Vice-Chancellor's Office
09 921 9617 | gemma.brooks@aut.ac.nz

CONTENTS

OUR RESEARCH	08
OUR TEACHING AND LEARNING	28
OUR STUDENTS	40
OUR ENGAGEMENT	52
OUR STAFF	68
OUR PLACES AND SPACES	76



WELCOME



Since AUT was established as a university on 1 January 2000, we have undergone remarkable change and development. Over the last 16 years we have become the second largest and fastest growing university in New Zealand, and we are now ranked amongst the top 3% of universities world-wide, and in the top 60 international universities aged under 50 years.

This is remarkable progress, but it doesn't tell the real story of the University's development. That story is about the people at AUT who have made this progress possible.

This, the first yearbook for AUT, tells that story. It provides snapshots of a selection of the activities and achievements, and people behind them, that have shaped our university's reputation during the year.

The six sections: Our Research, Our Teaching and Learning, Our Students, Our Engagement, Our Staff, and Our Places and Spaces illustrate a rich variety of successes and the people who have contributed to them.

2016 was a successful year for AUT. We are proud of our achievements, our staff and our students, and remain committed to providing challenging, useful and accessible advanced education underpinned by relevant and applied research.

I hope you find reading about our highlights and achievements for 2016 informative and enjoyable.

Derek McCormack
Vice-Chancellor

KEY FACTS & FIGURES

29,000
STUDENTS

2ND

LARGEST UNIVERSITY
IN NEW ZEALAND &
FASTEST GROWING

TOP **3%**
(TOP 500)

WORLD UNIVERSITIES

TOP **60**

UNIVERSITIES
AGED UNDER 50

2500
STAFF



17 SCHOOLS
5 FACULTIES

\$385M
REVENUE

7600
QUALIFICATIONS AWARDED

5000+
INDUSTRY, EDUCATION &
RESEARCH PARTNERS
WORLDWIDE

4200
INTERNATIONAL STUDENTS

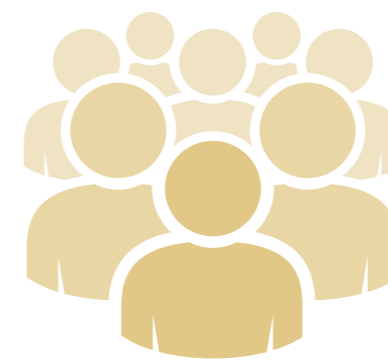
850
DOCTORAL STUDENTS

STUDENTS BORN IN
141 COUNTRIES



3 **CAMPUSES ACROSS AUCKLAND**
MANUKAU, AUCKLAND CBD, NORTH SHORE

3 **SPECIALIST LOCATIONS**
AUT MILLENNIUM, WARKWORTH RADIO ASTRONOMICAL
OBSERVATORY, AUT CENTRE FOR REFUGEE EDUCATION



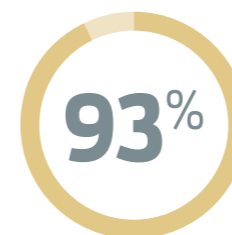
TOP **20** IN THE
WORLD

5/5 QS STARS

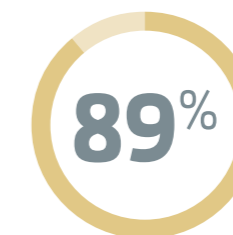
- ★ OVERALL
- ★ TEACHING
- ★ EMPLOYABILITY
- ★ INTERNATIONALISATION
- ★ INCLUSIVENESS

& **1ST** IN AUSTRALASIA

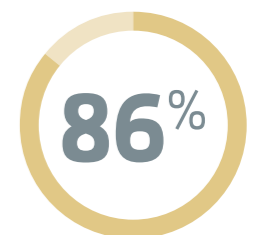
FOR INTERNATIONAL OUTLOOK



STUDENTS IN DEGREE AND
POSTGRADUATE STUDY



UNDERGRADUATE STUDENTS
COMPLETE WORK PLACEMENT
OR INTERNSHIP



GRADUATES EMPLOYED
FULL TIME AFTER 9 MONTHS



OUR RESEARCH

In 2016 AUT's quality-assured research outputs increased by 9%, and external research income for the university increased by 24%.

University research benefitted from 850 doctoral students across a full spectrum of disciplines, and individual staff were acknowledged through a wide range of university, national and international awards.

The following pages provide some rich illustration for this story of success and growth. It comprises a selection of our research achievements that illustrate the breadth and variety of AUT's research endeavours, and the people behind them.

HIGHLIGHTS

NATIONAL GEOGRAPHIC

An AUT Unmanned Aerial Vehicle research team, led by Associate Professor Barbara Bollard Breen, featured on the National Geographic series *Continent 7: Antarctica*. The 'Science of Survival' episode documented the group's work using drones to map the protected area surrounding Scott's Hut in Cape Evans, including the interior of the historic hut, which has since been transformed into a virtual 3D experience.

ASSOCIATE PROFESSOR BARBARA BOLLARD BREEN

Barbara Bollard Breen teaches and researches in AUT's School of Science and became an associate professor in 2016. Her research interests are in geographic information system (GIS) applications, ecosystem management and spatial ecology. Her recent research focus has been the identification and selection of Marine Protected Areas, using remote sensing technology to map habitats and landscapes for conservation planning and integrating social data with environmental and biological information.

Continent 7: Antarctica captured Barbara's team's research during the time they spent there in the 2015/2016 summer season. Of her trip to Antarctica, Barbara says: "It's a huge privilege to have been to Antarctica, let alone to have had the opportunity to research there."

"It made us realise the urgency of providing good quality data to protect the areas we were working in, and it was very empowering – we feel we're making an important contribution to management of these Antarctic regions."



850 DOCTORAL STUDENTS

AUT's postgraduate student body grew 8% in 2016 to reach 3500 equivalent full-time students (EFTS), including 850 doctoral students. Seventeen percent of the University's EFTS are now in postgraduate study.

DR NGAIRE HART

When Ngaire Hart graduated in July, she became the first Māori woman at AUT, and second in New Zealand, to receive a PhD in Engineering, completing a thesis on the habitats of New Zealand's native bees.

Ngaire says a book about contributions women have made to mathematics throughout history saved her giving up on her studies. *Women in Mathematics* helped her draw inspiration from the likes of female Greek philosopher Hypatia, who helped develop the scientific method.

She also realised that engineering was not necessarily about maths, it was just problem solving – "women do engineering all the time without even knowing it".

Ngaire says her interest in bees came about during her undergraduate studies when she was asked to design a tracking device for insects, which proved impossible given there was virtually no information on any of the 27 native New Zealand species.

So for her PhD she created special image-processing software which monitored the habitats of the bees to see if there was a drop in nests at three sites in Parihaka and Northland.



Dr Ngaire Hart with supervisor Associate Professor Loulin Huang and Head of AUT's School of Engineering, Computer and Mathematical Sciences Professor Enrico Haemmerle

EARTHQUAKE SIMULATION

Colab lecturer Dr Stefan Marks created a virtual reality simulation that shows the size and location of the earthquakes that struck in and around Kaikoura in November, as well as every earthquake in New Zealand since 1900. The simulation uses GeoNet data on magnitude, location and depth, with the 3D space allowing the depth of the quake to be represented in a way that 2D maps can't.

NOTHING ELSE BAR

Developed over four years, the Nothing Else snack bar was commercialised in 2016 through AUT Enterprises Ltd, and is being manufactured and distributed by South Auckland company AB Foods. The healthier muesli bar, which is preservative and additive free, has eight simple ingredients and a low glycaemic index, so consumers stay fuller for longer.

Advertising Creativity lecturer Dave Brown and Professor of Nutrition Elaine Rush are two of the brains behind Nothing Else.

"Globally, there is a call for better value food. Yet there's no shortage of unhealthy food on the market, so we need to work harder to improve the nutrition of New Zealanders – one bar at a time," Elaine says.

Dave, who created the Nothing Else brand, says it was designed specifically to be transparent about the ingredients.

"Consumers are surrounded by labels with tempting yet questionable health claims. By being upfront and displaying the familiar, natural ingredients, we're making it easier for customers to make choices."



1. The earthquake simulation uses dots to represent the magnitude and depth of each quake

2. Nothing Else bar

NUCLEAR MAGNETIC RESONANCE SPECTROMETER



Laboratory Officer Frank Muller explains how the spectrometer works to Tertiary Education, Skills and Employment Minister Steven Joyce

In February Tertiary Education, Skills and Employment Minister Steven Joyce launched the country's newest nuclear magnetic resonance spectrometer in AUT's School of Applied Sciences.

The spectrometer conducts complex chemical analysis and provides students with access to the latest chemistry research data, technology and techniques.

WORLD JOURNALISM EDUCATION CONGRESS

AUT won the bid to host the three-yearly World Journalism Education Congress over Brazil, recognising the University's leading teaching and research in this field. Two-hundred-and-thirty participants from 43 countries attended the conference to discuss journalism ethics, the future of journalism, and media and society.

SPORT SCIENCE RANKING



Shanghai JiaoTong's Academic Ranking of World Universities (ARWU) recognised AUT as New Zealand's top university for Sport Science, and number six in Australasia and number 29 in the world. ARWU is a research-focused ranking, with the criteria being number of publications and citations, papers in top journals and percentage of publications with an international co-author.

COLLABORATIONS

NEW ZEALAND INSTITUTE FOR PACIFIC RESEARCH

AUT partnered with the University of Otago and the University of Auckland to establish the New Zealand Institute for Pacific Research. Funded by the Ministry of Foreign Affairs and Trade, the centre will deliver a research programme focused on Pacific development, investment and foreign-policy issues.

INTERACT

The INTERACT Centre of Technology Excellence, launched in July, aims to create a quantum leap forward for New Zealand's ability to be a leading developer of data technologies and to retain IT and data science graduates in local industries.

The INTERACT centre is a collaboration of experts and researchers from New Zealand universities, local organisations and multinational partners.

The opportunities for networking and collaboration provided by INTERACT will work in support of AUT's Centre for Social Data Analytics to provide innovative solutions to social problems by applying strong data science to linked administrative data.

The areas of research being undertaken by other members of INTERACT include motion capture and virtual reality technologies, improving the safety of driverless cars and using drones to create 3D maps.

SCRIPT

The Design for Health and Wellbeing (DHW) Lab – a collaboration between AUT and the Auckland District Health Board – developed its first smartphone app in 2016. 'Script' provides clinicians quick and simple access to real-time antibiotic guidelines. Doctors enter patient symptoms into the app, which formulates the recommended antibiotic treatment plan and immediately highlights any drug reactions or conflicts a patient may have.

DHW LAB

Opened in 2015, the DHW Lab, located at Auckland City Hospital, is a collaboration between the Auckland District Health Board and AUT's Faculty of Design and Creative Technologies. It brings together AUT students, graduates and staff, design industry collaborators, patients and DHB staff to develop products, services, systems

and experiences for the improved health and wellbeing of hospital users.

In 2015 the lab won the top award at the Best Awards, run by the Designers Institute of New Zealand, and in 2016 it received Royal Society of New Zealand support to explore design opportunities for people living with dementia in hospitals and the community.



The 'Script' app

BIODESIGN LAB

AUT's BioDesign Lab opened in 2016, bringing together biomedical engineering methodologies and expertise in human physiology with industrial and engineering design to deliver new and innovative therapeutic devices and treatments.

With a current emphasis on the human upper airway, breathing and the nose, the BioDesign Lab has developed a new air-pressure treatment for obstructive sleep apnoea, which is thought to affect up to 25% of the world's adult population. The innovative breathing treatment platform offers the potential for a non-pharmaceutical treatment option for a range of physiological and neurological ailments.



1. INTERACT was launched during the third AUT Research and Innovation Showcase 'Transformational Digital Futures' which demonstrated what the University is doing in data science and technologies research

2. The BioDesign Lab's sleep apnoea treatment machine

GRANTS

EARTHQUAKE TECHNOLOGY

Technology co-designed by Structural Engineering lecturer Dr Pouyan Zarnani that improves earthquake resilience in buildings was awarded \$3M in government funding. Pouyan and two members of Auckland University's Civil and Environmental Engineering department designed the Resilient Slip-Friction Joint, which has the capacity of dissipating earthquake energy as well as self-centring with no post-event maintenance to minimise the damage and residual drift of structures.

LANGUAGE REVITALISATION

Te Ipukarea, the National Māori Language Institute at AUT, was awarded \$998k by the Centre of Research Excellence, Ngā Pae o te Māramatanga, for two language revitalisation projects. 'Te Reo o te Pā Harakeke' will examine what factors contribute to the successful intergenerational transmission of the Māori language in the home, and 'Te Whare Matihiko o te Reo' will create an online digital portal comprising a range of te reo Māori and mātauranga created through documentary research, wānanga and interviews.

PACIFIC ISLANDS FAMILIES STUDY

AUT's Pacific Islands Families (PIF) Study received funding of \$430k from the Ministry of Business, Innovation and Employment to allow it to be translated into an international context to help determine how and why child development environments change and which environments are supportive.



Dr El-Shadan Tautolo

AUT also received funding of \$940k through the government's 'Ageing Well' National Science Challenge for the Healthy Pacific Grandparents Study, which will recruit participants from the PIF Study and examine the factors that older Pacific people consider to be important to their health and wellbeing.

The PIF Study, which is run from AUT's South Campus by Dr El-Shadan Tautolo, is a longitudinal study following 1400 Pacific children for the first 13 years of their lives to help inform Pacific child and family health practice.

FIRST SMART IDEAS GRANT

Dr Andrew Lowe received AUT's first successful grant through the Ministry of Business, Innovation and Employment's Smart Ideas fund. Andrew's team will use the \$999k of funding for its 'Smart long-term bio-potential sensors' project – in which they will develop a vest that uses a new sensor system that detects electrical activity of the brain and heart.

"There is a growing interest in sensing electrical activity of the brain and heart for rehabilitation, fitness, consumer electronics and long-term healthcare. However, current sensors don't work long term because they irritate skin, dry out or are affected by movement. Our research will look at ways to solve these problems."

— Dr Andrew Lowe

NATIONAL SCIENCE CHALLENGE

Professor Jarrod Haar was awarded \$236k for his work with the 'Science for Technological Innovation' National Science Challenge. Jarrod will look to develop models and training informed by Mātauranga Māori that support researchers, science organisations and enterprises involved in the co-innovation process.



PROFESSOR JARROD HAAR

Jarrod Haar, of Ngati Maniapoto and Ngati Mahuta descent, joined AUT in 2016 as a Professor of Human Resource Management in the Faculty of Business, Economics and Law.

In February he received the inaugural HR Researcher of the Year award at the annual New Zealand HR Awards, with the judging panel acknowledging his strong research record, academic leadership and media impact, both nationally and internationally.

Jarrod uses data analytics in his research – a tool he says gives human resource strategies concrete rationale.

"HR has traditionally been seen as focused on the 'soft side' of business. Using analytics and hard data to predict trends such as absenteeism or turnover can help legitimise HR strategy, making it easier to sell in to senior management."

AWARDS

INNOVATION AWARDS

The AUT/New Zealand Alliance won the 'Highly Commended' award in the Innovation Excellence in Research category at the 2016 New Zealand Innovation Awards for its contribution to the Square Kilometre Array (SKA) project.

SKA

The SKA is the world's biggest science project: a \$750M international radio astronomy project involving 13 countries, which will see thousands of radio telescope dishes installed across Australia and South Africa, acting as two giant radio telescopes.

The telescopes, which will be fully operating by 2030, will help to create data images that allow scientists to see back to the beginning of the universe for the first time.

AUT leads New Zealand's contribution – the New Zealand Alliance – which is helping to design the correlator that houses the high-speed computers. These are the brains of the operation and make all the data appear as though

it is coming from just one telescope, making it easier for scientists to collect information. AUT is using its radio telescopes in Warkworth to help model the SKA's demands.

In 2016 the Ministry of Business, Innovation and Employment awarded the alliance \$0.9M in continuation funding which will enhance New Zealand industry engagement with the project.



One of the AUT telescopes at the Warkworth Radio Astronomical Observatory



Professor of Strength and Conditioning Mike McGuigan was named 2016 William J Kraemer Outstanding Sport Scientist of the Year by the National Strength and Conditioning Association of the USA.

Mike, who has worked with the All Blacks, Silver Ferns and Valerie Adams to help improve their sporting performance, was recognised for the impact of his research on high-performance sport in New Zealand, which has focused on strength, power development and assessment in athletes.



AUT Pro Vice-Chancellor Research and Innovation, and Professor of Mechanical Engineering, John Raine was elected to Companion of the Royal Society of New Zealand for the significant role he has played nationally in the development of innovation policy and research infrastructure.

HEALTH RESEARCH COUNCIL

AUT researchers Professor Valery Feigin and Associate Professor Alice Theadom received Health Research Council of New Zealand (HRC) awards for their contributions to health research excellence. Valery was recognised for his outstanding contribution to stroke and traumatic brain injury research, and Alice received the HRC's outstanding emerging researcher award for her investigation of traumatic brain injuries in New Zealand.

IN 2016 FIVE AUT RESEARCHERS RECEIVED CAREER DEVELOPMENT AWARDS FROM THE HRC:

- **Debra Gerrard**
Māori PhD Scholarship
Taiohe and whānau entering acute mental health with alcohol and drug issues
- **Dr Tamasin Taylor**
Pacific Postdoctoral Fellowship
Understanding Pacific Island peoples experiences of bariatric surgery
- **Dr Alayne Hall**
Māori Postdoctoral Fellowship
Tūhono Māori: Promoting secure whānau relationships for traumatised mokopuna
- **Karol Czuba**
Clinical Research Training Fellowship
Improving outcomes for support workers in aged care
- **Terry Dobbs**
Clinical Research Training Fellowship
Korero mai: Taitamariki Māori development of healthy relationships

ASSOCIATE PROFESSOR ALICE THEADOM

Alice Theadom is the Deputy Director of AUT's National Institute for Stroke and Applied Neurosciences and became an associate professor in 2016. Originally trained as a health psychologist in the UK, Alice moved to New Zealand in 2009 and has since focused her research on understanding people's adjustment to, and recovery from, neurological illness and injury.

In November Alice was honoured by the New Zealand Psychological Society for her research accomplishments, receiving the GV Goddard Early Career Award in recognition of her scholarly contributions to the field of applied professional psychology.



PUBLIC LECTURES

As a place of higher learning that encourages critical discussion and debate, AUT hosts public lectures by leading experts on issues affecting New Zealand and other parts of the world.



In 2016 AUT's Policy Observatory hosted Ann Pettifor, who spoke about 'Brexit, the retreat of globalisation and the implications for New Zealand'.

Ann is an internationally renowned British economist best known for correctly predicting the global financial crises. She is the director of the economist network Policy Research in Macroeconomics, an honorary research fellow at the Political Economy Research Centre at City University, London, and a fellow of the New Economics Foundation in London.



Stephen Jennings gave a lecture on the power of markets and entrepreneurship in emerging economies, the outlook for Sub-Saharan Africa and the opportunities and implications for New Zealand.

The New Zealand entrepreneur has been living and working in emerging markets for more than 20 years. He is a pioneer of capital markets in Central and Eastern Europe and Africa, responsible for over \$200 billion of investment into these regions. Stephen's latest venture is spearheading urban development projects in Africa through his company Rendeavour.

Stephen was awarded an Honorary Doctorate of AUT in 2012.

EXCELLENT RESEARCHERS

Each year AUT acknowledges its outstanding researchers at the University's annual Excellence Awards. The 2016 recipients of the Research Excellence Awards were:

- **University Medal**
Professor Patria Hume
Research areas: Sports biomechanics, human performance and injury prevention
- **Individual Research Excellence**
Professor Gail Pacheco
Research areas: Gender wage gap, future of work, youth labour market, minimum wage
- **Postgraduate Research Supervision**
Professor Candice Harris
Research areas: Management, human resource management, hospitality and tourism
- **Emerging Researcher**
Dr David Rice
Research areas: Chronic pain management, exercise rehabilitation, neurophysiology, orthopaedics
- **Research Team**
Ergonomics and Human Factors Group
Led by Professor Mark Boocock; Liz Ashby, Dr Grant Mawston, Dr Fiona Trevelyan
Research areas: Occupational injury and illness prevention

PROFESSOR PATRIA HUME

Patria Hume received the University's preeminent academic award, the University Medal, at the 2016 Excellence Awards. The medal recognised Patria's sustained and outstanding contribution to AUT's research development and academic reputation during her 16 years at the University.

Patria is a Professor of Human Performance in the Sport Performance Research Institute New Zealand (SPRINZ), based at AUT Millennium. She is an internationally respected scholar, whose work has been cited more than 5000 times. She has generated more than \$4.6M in research grants over her career.

Patria was lead researcher for the International Rugby Board long-term player health outcomes study, which looks at the long-term effects of concussion in rugby players. For her work on that study, she was named a finalist for *The New Zealand Herald's* New Zealander of 2016.

In July Patria received the most prestigious award in her field – the International Society of Biomechanics in Sports Geoffrey Dyson Award.



Vice-Chancellor Derek McCormack presents Professor Patria Hume with the 2016 University Medal

RESEARCH INSTITUTES & CENTRES

The University opened new research centres and institutes in 2016, bringing the total number to more than 60, covering a wide range of disciplines.

AUT RESEARCH INSTITUTES

- Engineering Research Institute
- Health and Rehabilitation Research Institute
- Institute for Applied Ecology New Zealand
- Institute for Radio Astronomy and Space Research
- Institute of Biomedical Technologies
- Institute of Culture, Discourse and Communication
- Institute of Public Policy
- Knowledge Engineering and Discovery Research Institute
- National Institute for Public Health and Mental Health Research
- National Institute for Stroke and Applied Neurosciences
- New Zealand Tourism Research Institute
- New Zealand Work Research Institute
- Sports and Recreation Research Institute New Zealand
- Te Ipukarea – National Māori Language Institute

AUT RESEARCH CENTRES

- Additive Manufacturing Research Centre
- Auckland Centre for Financial Research
- Centre for Adaptive Pattern Recognition
- Centre for Advanced Manufacturing Technology
- Centre for Artificial Intelligence Research
- Centre for Bioinformatics
- Centre for Biomedical Materials
- Centre for Cardiovascular Diagnosis
- Centre for Child Health Research
- Centre for Computer Vision and Robotics
- Centre for Creative Writing
- Centre for Data Mining and Decision Support Systems
- Centre for eHealth
- Centre for Energy and Power Engineering
- Centre for Food Science
- Centre for Interdisciplinary Trauma Research
- Centre for Journalism, Media and Democracy
- Centre for Kode Technology Innovation
- Centre for Māori Innovation and Development
- Centre for Midwifery and Women's Health
- Centre for Migrant and Refugee Research
- Centre for Neuroinformatics and Neurocomputer
- Centre for Non-Adversarial Justice
- Centre for Novel Methods of Computational Intelligence
- Centre for Occupational Health and Safety Research
- Centre for Performance Research
- Centre for Person Centred Research
- Centre for Private Law
- Centre for Public Health and Development Research
- Centre for Refugee Education
- Centre for Respiratory Therapies
- Centre for Signals and Systems
- Centre for Social Data Analytics
- Centre for Study of Creativity
- Centre for Translation and Interpreting
- Colab
(A collaboratory of people across AUT's schools of art, design, computer science, engineering, media, architecture and business, working on multi-disciplinary projects with industry and community partners)
- Design Research Centre
- Gambling and Addictions Research Centre
- Human Potential Centre
- Industrial Information and Control Centre
- International Centre for Language Revitalisation
- Multimodal Research Centre
- National Centre for Interprofessional Education and Collaborative Practice
- National Centre for Metal Forming and Tribology
- Pacific Media Centre
- Popular Culture Research Centre
- Statistical Research and Consultancy Centre
- STEM-TEC
(The centre aims to increase the number and improve the quality of science, technology, engineering and mathematics graduates for New Zealand)
- Taupua Waiora Centre for Māori Health Research
- Virtual Engineering and Visualisation Centre

THE FOLLOWING RESEARCH CENTRES WERE OPENED IN 2016:



CENTRE FOR ACTIVE AGEING

The Centre for Active Ageing, launched in September, brings together researchers from diverse health, sports and social science disciplines, and university and community partners, with the aim of working with older people to live better.

The centre's research focuses on four key areas:

- Diverse and inclusive communities
- Liveable spaces and places
- Community and social life
- Negotiating health issues



CENTRE FOR NON-ADVERSARIAL JUSTICE

Launched in April by Professor Warren Brookbanks, the AUT Centre for Non-Adversarial Justice aims to provide cross-disciplinary leadership to academia, the legal profession and other professionals engaged in non-adversarial problem solving.

It is the only centre for non-adversarial justice in New Zealand and offers grassroots support to the development of national policy in this area. The Centre helps organise conferences

and seminars to educate the country's practitioners and to establish networks with leading international organisations to share experience and knowledge in this emerging domain.



CENTRE FOR PRIVATE LAW

The AUT Centre for Private Law aims to promote the understanding of private law through a variety of doctrinal, theoretical, empirical, historical and comparative methodologies.

Its task is to facilitate research and debate across the entire spectrum of private law including tort law, contract law, the law of unjust enrichment, property law, equity and private international law. The Centre consists of leading New Zealand

private law scholars and regularly holds presentations from international experts in this field. The Centre furthers the University's Law School mission to be a centre of excellence for commercial and legal research in New Zealand.



CENTRE FOR SOCIAL DATA ANALYTICS

Launched in March, the Centre for Social Data Analytics focuses on work that can address and inform social issues in areas like health, education and social services.

In 2016 the Centre delivered a child welfare predictive risk tool for Allegheny County (Pennsylvania, USA). Frontline staff now use that tool to help them screen calls alleging child maltreatment.

"I want every project to have a measurable impact, because using innovative data analytics to solve difficult problems is what drives us," says Centre Co-director Professor Rhema Vaithianathan.

With new funded research projects in New Zealand, the USA and England, the Centre is focused on deepening and sharing its expertise in translational research.



PUBLICATIONS

The University's quality-assured research outputs rose by 9% in 2016 to more than 2000 outputs, including publication in leading international journals:

- Professor Sergei Gulyaev, Tim Natusch and Stuart Weston had their world-leading research on neutrinos published in *Nature Physics*.
- Professor Grant Schofield co-authored a paper on urban design and physical activity levels, which was published in *The Lancet*.
- Professor Steve Pointing co-authored a paper on the Earth's microbiome that was published in *Nature Microbiology*.
- Professor Valery Feigin's research that showed air pollution contributes to around one third of strokes worldwide was published in *The Lancet Neurology*.

AUT launched the Policy Observatory at www.thepolicyobservatory.com

The website brings together leading researchers and commentators to provide the public with an independent source of information on critical issues facing society.

In 2016 the Policy Observatory was commissioned by the Committee for Auckland to report on the state of governance in Auckland. The report *The Governance of Auckland: 5 years on*, which examines whether the new Auckland Council structure has delivered on the aims of the local government amalgamation reforms, was released in May.

AUT staff wrote and edited more than 40 books in 2016 covering a range of topics, including:

- *A Theory of Tort Liability*, Professor Allan Beaver
- *Performing Politics: Media Interviews, Debates and Press Conferences*, Professor Geoffrey Craig
- *Dictionary of Business and Management in India*, Professor Peter Enderwick
- *English Interpreting in Medical Settings*, Associate Professor Ineke Crezee
- *Animation and Creativity in Education*, Britta Pollmuller
- *Epistemology and Metaphysics for Qualitative Research*, Associate Professor Tomas Pernecky
- *Introduction to Intelligent Surveillance*, Associate Professor Wei Qi Yan
- *The Complete Kiwi Pizza Oven*, Alan Brown
- *The Tutor: Transformational Educators for 21st Century Learners*, Dr Adrian Schoone
- *Corporate Behavior and Sustainability: Doing Well by Being Good*, co-edited by Associate Professor Coral Ingley
- *What The Fat? Sports Performance: Leaner, Fitter, Faster on Low-Carb Healthy Fat*, co-authored by Professor Grant Schofield and Dr Caryn Zinn
- *Human Rights in New Zealand: Emerging Faultlines*, co-authored by Professor Judy McGregor
- *The Teaching of Criminal Law: The Pedagogical Imperatives*, co-edited by Associate Professor Kris Gledhill
- *Creating New Synergies: Approaches of Tertiary Japanese Programmes in New Zealand*, co-edited by Dallas Nesbitt
- *Culturally Responsive Leadership in Higher Education: Promoting Access, Equity, and Improvement*, co-edited by Dr Andrés Santamaría

KA NGARO TE REO

Released in April, *Ka Ngaro Te Reo*, by Professor Paul Moon, is the first book that covers the near extinction of te reo Māori in the nineteenth century.

This ground-breaking work, based on a huge range of published and archival material, oral histories and contemporary accounts by Māori, charts how the disruptive forces of colonisation devastated te reo Māori in this era.

Paul Moon is a professor of history in AUT's Te Ara Poutama (Faculty of Māori and Indigenous Development). He is one of the country's best-selling and most acclaimed historians, with 25 published books and regular appearances on documentaries, radio shows, and current affairs and news programmes, both in New Zealand and overseas.

PROFESSOR VALERY FEIGIN

Valery Feigin is a Professor of Epidemiology and Neurology and the Director of AUT's National Institute for Stroke and Applied Neurosciences. His prime research interest is the epidemiology, prevention and management of stroke and traumatic brain injury.

He has published more than 300 journal articles, 12 handbooks and 25 book chapters, and his work has been cited more than 29,000 times. He is the most published New Zealander

in *The Lancet* – the world's leading independent general medical journal.

In 2014 and 2015 Valery was awarded the McDiarmid Medal of the Royal Society of New Zealand and World Stroke Organization President's Award for "outstanding contribution to stroke research and prevention".

His research has revealed that, although stroke incidence and mortality rates have declined over the last 20 years, the absolute number

of strokes is rising – and with it the death and serious disability incurred by stroke.

This research culminated in the development of the Stroke Riskometer™ – a free app that allows users to assess their own stroke risk, which is soon to be translated into 18 languages.





OUR TEACHING & LEARNING

Teaching and learning is at the heart of our university. In 2016 we were awarded 5 out of 5 stars for teaching by Quacquarelli Symonds (QS), the international world university rankings organisation, and are now world-ranked in 11 subject areas.

Our teaching is spread across 17 schools and five faculties, including the newly established School of Economics in the Faculty of Business, Economics and Law.

During the year the University received a positive academic audit report from the Academic Quality Agency, and

was pleased to see a growing number of academic staff becoming Fellows and Senior Fellows of the UK Higher Education Academy.

Details of these and many other achievements related to teaching and learning at AUT in 2016 are provided in the following pages.

17 SCHOOLS

- ART & DESIGN
- BUSINESS
- CLINICAL SCIENCES
- COLAB: CREATIVE TECHNOLOGIES
- COMMUNICATION STUDIES
- ECONOMICS
- EDUCATION
- ENGINEERING, COMPUTER & MATHEMATICAL SCIENCES
- HOSPITALITY & TOURISM
- INTERPROFESSIONAL HEALTH STUDIES
- LANGUAGE & CULTURE
- LAW
- PUBLIC HEALTH & PSYCHOSOCIAL STUDIES
- SCIENCE
- SOCIAL SCIENCES & PUBLIC POLICY
- SPORT & RECREATION
- TE ARA POUTAMA - MĀORI AND INDIGENOUS DEVELOPMENT

WORLD-RANKED SUBJECTS

“AUT now features amongst the world’s elite institutions in 11 subjects”

— QS World University Rankings

- ACCOUNTING & FINANCE
- ART & DESIGN
- BUSINESS & MANAGEMENT STUDIES
- COMPUTER SCIENCE & INFORMATION SYSTEMS
- ECONOMICS & ECONOMETRICS
- EDUCATION
- ELECTRICAL & ELECTRONIC ENGINEERING
- HOSPITALITY & LEISURE STUDIES
- LAW
- LINGUISTICS
- SPORTS RELATED SUBJECTS

AUT HAS
5/5 QS STARS
★ ★ ★ ★ ★
FOR TEACHING

EXCELLENT TEACHERS

AUT’s outstanding teachers are recognised at the University’s annual Excellence Awards. The recipients of the 2016 Excellence Awards for Teaching were:

- **Irshad Ali**
Business School
- **Dr Denise Atkins**
School of Sport and Recreation
- **Patsi Davies**
School of Public Health and Psychosocial Studies
- **Dr Jane Verbitsky**
School of Social Sciences and Public Policy

- **Doctor of Health Science Teaching Team**
School of Clinical Sciences
Led by Professor Liz Smythe; Associate Professor Peter Larmer, Associate Professor Deb Payne, Associate Professor Duncan Reid, Dr Deb Spence, Associate Professor Val Wright
St Clair

SPECIAL RECOGNITION

- **Centre for Refugee Education Teaching Team**
School of Language and Culture
Led by Maria Hayward; Eddie Brafield, Marilyn Carroll, Meriel Cavanagh, Jeremy Cooper, Pip Dodd, Lisa Girvan, Minoo Gorgani, Ruth Ham, Penny Hickey, Man Hau Liev, Catherine McKinlay, Tony Masterton, Pip Senior, Marianna van den Bergh

CENTRE FOR REFUGEE EDUCATION TEACHING TEAM

Led by Senior Lecturer Maria Hayward, the teaching team at the Centre for Refugee Education in Mangere provides a six-week education programme for refugees who enter New Zealand under the government quota scheme.

The team was recognised by the Vice-Chancellor at the 2016 AUT Excellence Awards for the unique role they play in not only filling learning and skills gaps,

but helping build trust, restore human rights and create positive relationships for students who have often arrived under traumatic circumstances.

With a new set of learners arriving every two months, and with ages ranging from early childhood to adult, the team has developed a curriculum that gives refugees English and life skills, but remains flexible in order to tailor the lessons to each new intake.



HIGHLIGHTS

SCHOOL OF ECONOMICS

AUT established a School of Economics in 2016, which sits within the re-named Faculty of Business, Economics and Law. We are now ranked in the top 400 in the world for Economics and Econometrics by QS.

BCIS ACCREDITATION

AUT's Bachelor of Computer and Information Sciences was one of six computing degrees in New Zealand to achieve the comprehensive Degree Accreditation run by the Institute of IT Professionals NZ.



ACADEMIC AUDIT

In April 2016 the report of the 2015 independent academic audit by the Academic Quality Agency (AQA) was received. The audit, undertaken every four years, examines the University's academic activities and involves a site visit by a panel of international and New Zealand academic and professional members.

THE AQA COMMENDED THE UNIVERSITY FOR:

- Our proactive and inclusive approach to enhancing student engagement
- Identifying the learning needs of students and providing appropriate support
- The number of students who take part in work-integrated learning
- The embedded ethos of support for the aspirations of Māori
- Supporting and encouraging Pacific staff and students and commitment to Pacific research
- Learning space design, particularly collaborative spaces and digital infrastructure
- Creating an inclusive and safe campus for all students and staff
- Thorough procedures that help enable postgraduate success
- Our genuine student focus
- Delivering on our education commitments
- Our distinctive contribution to university education
- Preparing students for professional practice and employment

HIGHER EDUCATION ACADEMY ACCREDITATION



STRATEGIC PARTNER
2016-17

During 2016, 25 AUT staff became Fellows and Senior Fellows of the United Kingdom Higher Education Academy (HEA).

AUT is the first university in New Zealand to have staff awarded with this international benchmark of professional recognition of learning and teaching.

AUT's Centre for Learning and Teaching has developed a unique bi-cultural programme, Ako Aronui, designed for staff to engage in

effective professional development and gain recognition for high quality teaching. Early support and funding for this programme came from the Australian National University and Ako Aotearoa.

AUT is applying to become an accredited HEA institution in 2017.

WOOLF FISHER SCHOLARSHIPS

Eleven recipients received Woolf Fisher First-in-Family Scholarships in 2016. The scholarships are awarded to students who are the first in their family to attend university, and cover the direct costs of study for the duration of an undergraduate degree, with a nominal value of around \$20,000 per scholarship. Started in 2014, the scholarships were established by the Woolf Fisher Trust – one of New Zealand's largest privately endowed educational trusts established by Sir Woolf Fisher.

JAYCIE BRADLEY

Jaycie Bradley was one of four Northland women to receive a Woolf Fisher First-in-Family Scholarship in 2016.

Jaycie, who is of Ngāpuhi descent and a former Pompallier College student in Whangarei, is studying a Bachelor of Health Science majoring in Psychology. She says the scholarship provided huge financial support.

"Being independent, experiencing life away from the comfort and security of home and the opportunity to rise to a challenge has been a lasting highlight of university life this year. Without this support, I would not have the courage I do now to be persistent in pursuing my aspirations and goals for the future."



PREPARATION PROGRAMMES

In 2016 a number of programmes were developed and expanded to help prepare students for university study and life.

MYFUTURE

Throughout the year, 380 students from South Auckland schools enrolled in the MyFuture programme, which aims to develop life and study skills, and help students prepare for their exams and future study.

STEMPRENEURIAL BUGS

Funded by the government's Unlocking Curious Minds initiative, STEmpreneurial Bugs was held at AUT's South Campus to inspire and encourage South Auckland youth into science, technology, engineering and mathematics (STEM) subjects.

UNIPREP

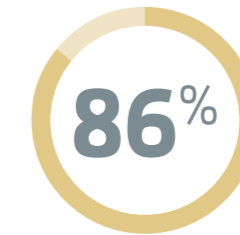
UniPrep is a six-week summer programme held at AUT's South Campus that provides students with an introduction to university through academic workshops, team building activities and university life experiences. In 2016, 246 students completed the UniPrep programme – with 83% of participants going on to enrol at university.



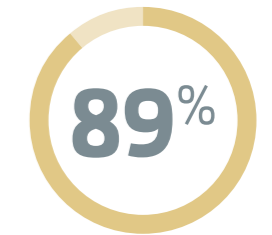
EMPLOYABILITY

Throughout 2016 AUT continued to create and enhance services and programmes to develop students' co-curricular skills and capabilities to help prepare them for the working world.

AUT HAS
5/5 QS STARS
★ ★ ★ ★ ★
FOR EMPLOYABILITY



GRADUATES EMPLOYED
FULL TIME AFTER 9 MONTHS



UNDERGRADUATE STUDENTS
COMPLETE WORK PLACEMENT
OR INTERNSHIP

EMPLOYABILITY LAB

A Student Employability Lab was established in 2016 to provide students a place where they can attend career fairs, speaker series, workshops and presentations to learn about searching for jobs, interview skills, CV writing, social media presence and networking. The lab also provides a place for employers to connect with AUT students for co-operative placements, internships and voluntary work.



WORK PLACEMENTS

At 89%, AUT is about three times higher than the national university average for undergraduate students completing a work placement or internship as part of their studies, and we aim to make that 100%. Through placements and internships, students are exposed to real work places and make invaluable industry and business connections, and many are offered a job with their host organisation.



MONIQUE BUTLER

Being able to gain workplace experience at Vodafone was the highlight of her business degree, according to Monique Butler, who completed her Bachelor of Business in December.

"The experience was a great opportunity to apply the theories and concepts I learned at AUT to real business situations. It took my level of comprehension to a whole new level."

Monique is now part of Vodafone's 2016 Discover Graduate Programme,

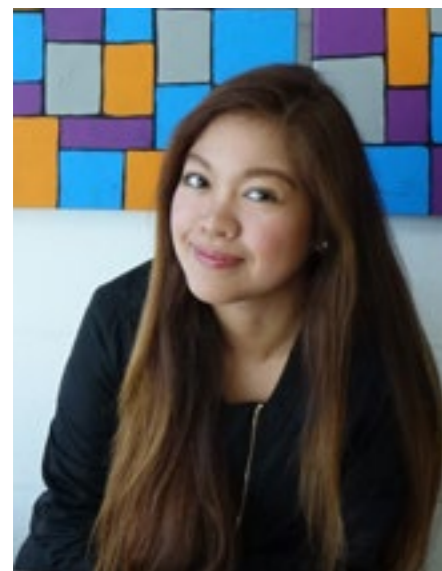
being one of just 40 graduates picked from 1500 applicants.

Anna McHardy, Graduate Manager at Vodafone New Zealand, says graduates need to be open to experiencing new things and take those opportunities on with passion and commitment.

"We were fortunate enough to have Monique join us as an HR intern. She demonstrated the behaviours that ensure success at Vodafone, including customer focus, ambition, innovation and great people skills."

EDGE AWARD

The AUT Edge Award was launched in May, with the aim of developing participants' co-curricular capabilities, acknowledging their involvement in volunteering, leadership and employability activities on their academic transcript. Throughout the year 825 students registered for the award and 14 students graduated with their Edge Award in December, having completed it in only one semester – a significant achievement on top of academic studies.



JANICE NERIDA

A focus on the AUT Edge Award led to a great job for international student Janice Nerida – one of the first recipients of the award.

After enrolling for the award, Janice participated in the Shadow a Leader Day, volunteered for the New Zealand Breast Cancer Foundation and New Zealand Fashion Week, became a student ambassador and took on the MARS@AUT club marketing co-ordinator role.

She is now employed in a full-time marketing assistant role at Prominence, a social recruitment and marketing company. What Janice hadn't expected from the Edge Award was the personal growth that she experienced, along with employability skills.

"I developed more confidence about what I have to offer. I also gained New Zealand workplace experience and learned how to create a stronger professional social media presence."

INTERNZ

The AUT International Internz Programme was established to give AUT graduates the opportunity to live and work in global organisations based in the USA. When the programme started in 2014 nine students worked in nine host organisations across three cities. The programme has grown significantly over the past three years, now with 31 recipients going to 21 organisations across seven cities in two countries.

TOIROA WILLIAMS

From the City of Sails to the City of Angels, Toiroa Williams (Te Whakatōhea, Ngāti Tai) will put the theory behind his Master of Arts into practice, championing indigenous voices for the Sundance Institute's Native American and Indigenous Program.

Based in Los Angeles, Toiroa, who majored in Māori Development and Communication, will work with the Native American community on indigenous film submissions for the Sundance Film Festival.

Curating independent stories and preserving the space for Māori on the world stage, he hopes the Sundance team will "learn a few things from back here and what we do", too.

JESSICA WILLEMSE

Having completed her studies in Communication Design, Jessica Willemse is headed to New York for work experience at Facebook Creative Shop.

For three months Jessica will work as a trainee art director, giving her the opportunity to demonstrate her creative flair and technical expertise to execute creative advertising campaigns and help brands use Facebook to spread the word. This is the first time that AUT Internz has offered the position.

Jessica says she is most looking forward to living like a local, "being able to not just see things as a tourist, but as a New Yorker".

KITAEN SALT

Kitaen Salt remembers the sense of awe he had as an undergraduate when some of his peers secured internships overseas. Now, having completed a Bachelor of Business and Honours in Finance, Kitaen is set to embark on his own adventure working for National Australia Bank in New York.

His role will involve contributing to key projects and day-to-day activities with the global institutional banking team. Initially he believed his chances of a successful application were slim, and confesses that it still feels surreal. Kitaen says he can't wait to experience New York's cultural scene, and "live in the financial centre of the world".



ENTREPRENEURSHIP

At AUT we aim to develop the next generation of New Zealand entrepreneurs, and in 2016 ran programmes and competitions that enable students to learn how to be job makers rather than job takers.

CO.STARTERS

The CO.STARTERS programme launched in 2016, equipping aspiring entrepreneurs from AUT and the wider community with the insights, relationships and tools they need to take the next step with their ideas. Forty-eight people successfully completed the nine-week programme, which will be offered again in 2017, and expanded to the South Campus.



KAMYA GHOSE

The support from CO.STARTERS enabled International Business and Marketing student Kamya Ghose to take her idea to the next level.

Kamya, who graduated in December and is now working in a business development role in Australia, says she is on track to launch her start up. Queen Zaria is a lingerie brand created exclusively for women affected by breast cancer.

“What I liked most about CO.STARTERS is how broad the programme is. I learnt about all aspects of starting and running a business. Now that I’ve finished CO.STARTERS it all gets very exciting. I’ve been talking to a couple of people who can help with the manufacturing side of the business, so watch this space.”

KICKSTART WEEKEND

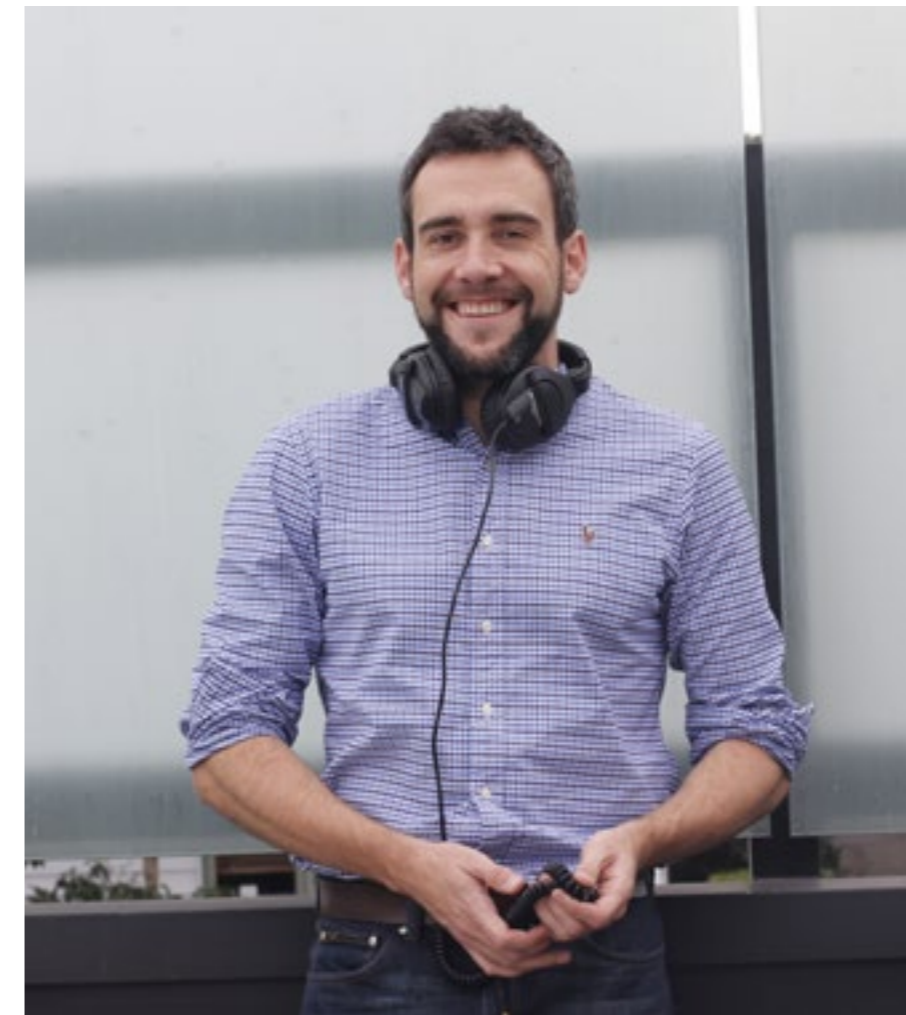
The annual AUT Kickstart Weekend was held in September, bringing together students, staff and alumni to collectively explore the entrepreneurial potential of new ideas. Participants learn about business model creation, market validation, IP protection, coding, designing, testing and public speaking. AUT alumni, academic and industry mentors help throughout the weekend, which culminates with presentations to local business and academic leaders.

INNOVATION CHALLENGE

AUT Enterprises runs the annual Innovation Challenge in which finalists pitch their ideas to a live audience to receive funding.

THE 2016 WINNERS WERE:

- **Zac Goodsir**
– first place for his electronic skateboard
- **Harry O’Connor**
– joint second place for his virtual reality showroom
- **Kamya Ghose**
– joint second place for her mastectomy lingerie



JAREK BEKSA

The winner of the 2015 AUTEI Innovation Challenge, Jarek Beksa, has had more success in 2016, raising \$11,000 in his Kickstarter campaign, which had a fundraising target of \$6000.

A PhD student from the School of Engineering, Computer and Mathematical Sciences, Jarek came from Poland to study audio-based interfaces for games in 2013. Since then he has garnered international recognition translating his research into games for people with visual impairments.

Leading a team of students, Jarek has created eight audio games. His app ‘Audio Game Hub’ has been downloaded more than 33,000 times and has gained positive user reviews and hundreds of requests to make more games.

Jarek won a Play by Play Award in April 2016 and recognition from the Royal National Institute for the Blind, a UK-based not-for-profit organisation, which named Audio Game Hub its app of the month in September.

OUR STUDENTS

29,000 students attended AUT in 2016 and the university graduated 7600 students, including 81 with doctorates and more than 700 with master's degrees.

We're proud of the large number of students who received national and international awards and recognition throughout the year. A selection of these are highlighted on the following pages.

STUDENT STATISTICS

29,000

STUDENTS

POSTGRADUATE
EFTS UP 9% TO

3500

850

DOCTORAL STUDENTS

20,000

EFTS

SOUTH CAMPUS
EFTS UP 18% TO

1500

PACIFIC EFTS
UP 9% TO

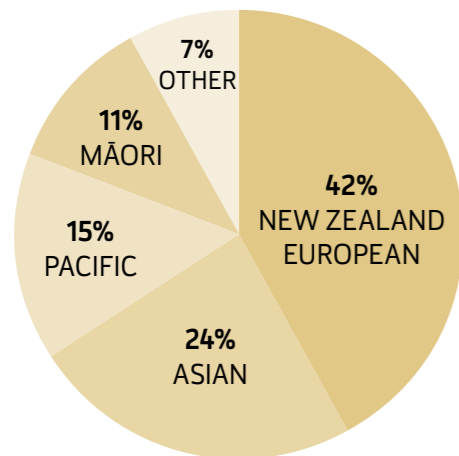
3380

MĀORI EFTS
UP 3% TO

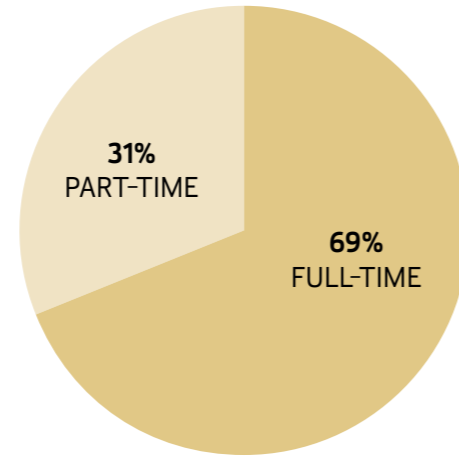
2480

STUDENT PROFILE

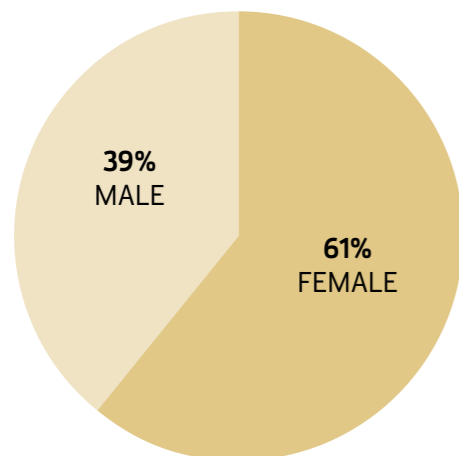
ETHNICITY



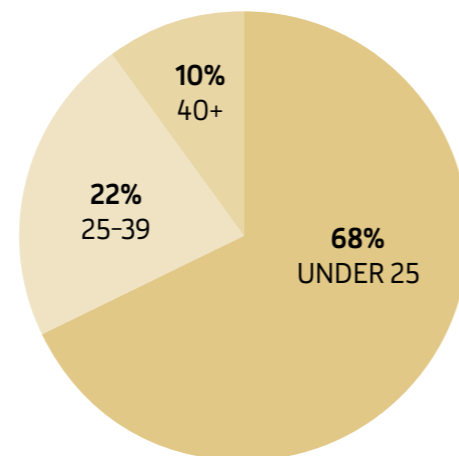
MODE OF STUDY



GENDER



AGE



GRADUATION

6200 DEGREE AND POSTGRADUATE QUALIFICATIONS CONFERRED INCLUDING: **723** MASTER'S & **81** DOCTORATES

SOUTHERN VOICES

The AUT Southern Voices choir was formed in 2016, bringing together South Campus students to perform at the winter graduation ceremonies. The choir received overwhelmingly positive feedback and was invited to perform at the Chancellor's Dinner, AUT LIVE and the AUT Excellence Awards.

YUVAL EYAL

Studying sport and recreation is about so much more than sitting in a classroom learning theory and taking exams, says AUT alumna Yuval Eyal.

"It's a continuous journey that combines theory and practice to turn students into confident and standout alumni. I chose the Bachelor of Sport and Recreation as it allowed me to try out different aspects and discover my true passion."

After graduating in July, Yuval moved to Sydney where she worked as a sales consultant for the New Zealand Vodafone Warriors in the NRL's Fan Relationship Management Centre. She now works as a relationship manager in AUT's Future Students Team.

She says AUT taught her a number of skills that were highly transferable to the professional working environment, including time management, organisation, teamwork and the ability to speak confidently in front of a large group.

IAN GUTTERIDGE

After immigrating to New Zealand from the UK seven years ago, Ian Gutteridge was determined to not only change his home but also his career. With that in mind, Ian started studying for a Bachelor of Health Science in Psychology.

Speaking at AUT's summer graduation ceremony in December 2016, Ian said that his aim was to "strive toward a profession that might help make a difference to someone's life".

He describes his time at AUT as being about learning and academia, but also about realising people can achieve anything they want to when they set their minds to it.

"This lesson is as valuable as any I've learned at AUT, along with the challenge of finding a balance between work, family responsibilities, paying bills and a social life."

Ian is currently enrolled in an Honours degree in Health Science, majoring in Psychology.



INTERNATIONAL STUDENTS

AUT has the second-largest number, and highest proportion, of international students of New Zealand's universities.

4000
INTERNATIONAL
STUDENTS

INTERNATIONAL STUDENTS
COME FROM

94 COUNTRIES

18%
OF AUT'S STUDENTS
ARE INTERNATIONAL

AUT STUDENTS
(INTERNATIONAL & DOMESTIC)
ARE BORN IN

141 COUNTRIES

INTERNATIONAL
POSTGRADUATE
ENROLMENTS UP

38%
SINCE 2014



LUDY CHAKHTO

When Ludy Chakhto came to New Zealand as a refugee from Syria in May 2015, she had just completed a degree at the University of Al Furat, Dirzour and was planning to do a master's in translation. Then civil war erupted and she was forced to flee.

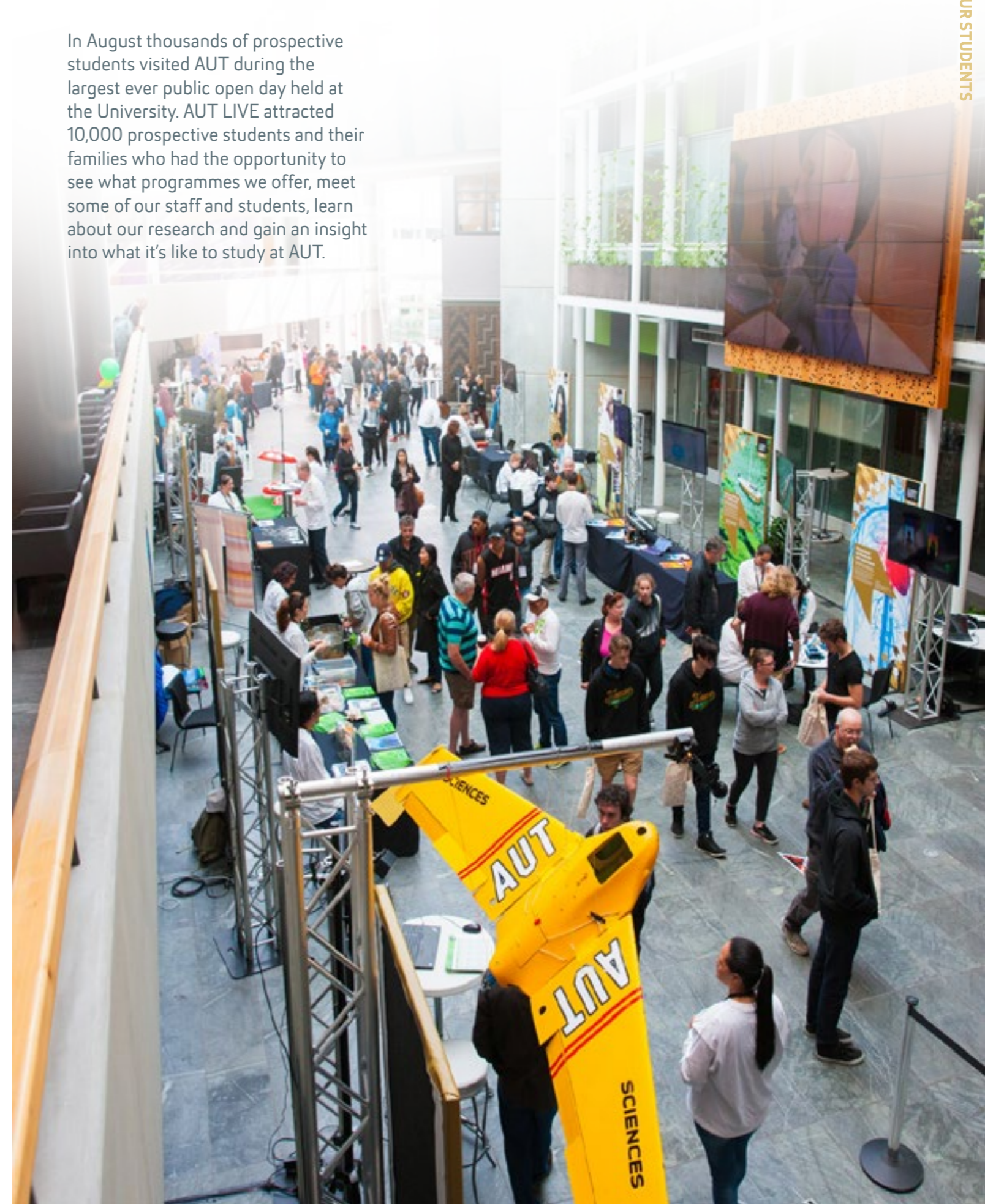
At the Mangere Refugee Resettlement Centre Ludy told staff about her goal of becoming a translator, but a conversation with an AUT lecturer resulted in her studying interpreting instead.

"She asked one question and it changed everything," says Ludy. "What do you want to do – work with people or sit in an office and work by yourself?"

One year later, Ludy now works as an interpreter at the same centre assisting Syrian refugees.

AUT LIVE

In August thousands of prospective students visited AUT during the largest ever public open day held at the University. AUT LIVE attracted 10,000 prospective students and their families who had the opportunity to see what programmes we offer, meet some of our staff and students, learn about our research and gain an insight into what it's like to study at AUT.



ACHIEVEMENTS AND AWARDS

AUT students received national and international recognition throughout 2016, winning a number of awards and competitions.

#CCONEXTGEN

A collective of 11 AUT honours fashion students called #CCONextGen won a pop-up store in Chancery Square in the Pop Up Now and 10 Days of Fashion in the City competition. Nicola Luey, Brendon Lee, Courtney Pellow, Monique Burgess, Claire Nicholson, Georgia Bretnall, Finn Godbolt, Joseph Churches, Jack Chen, Lulu Liu and Tia Feng sold jewellery and garments at the store, some of which were pre-orders from collections that showed at last year's AUT fashion show, Rookie.

BEST AWARDS

AUT had its best ever result at the 2016 Best Awards, with students winning eight gold, eight silver and four bronze pins. The awards are run by The Designers Institute and acknowledge excellence in graphic, spatial, product and interactive design.

KIMBERLEY RUWHIU

A new take on a classic piece of Kiwi farming apparel saw fashion student Kimberley Ruwhiu win one of New Zealand's top design awards. AUT's School of Art and Design has built a reputation for winning at the Best Design Awards, and 2016 was the School's most successful year yet.

Kimberley entered her version of the Swandri, an iconic New Zealand shirt, into the product category, winning the gold award. A modern version of the classic Swandri that most farmers wear, Kimberley updated it with fabrics for varying weather, and pockets for technological devices and monitoring equipment.

AXIS AWARDS

Advertising graduates Deborah Chae and Kieran Buchan won the Student Axis Award for their campaign for Lightbox. The awards, run by the Communications Agencies Association NZ, recognise creative excellence in New Zealand's advertising industry.

NZSL VIDEO AWARD

At the 2016 New Zealand Sign Language (NZSL) Awards, first-year student Lisa Thompson received the 'NZSL in the Media Award', which recognises an individual or organisation that demonstrates a commitment to promoting NZSL and Deaf awareness. Lisa's six-minute documentary *The Future is in Your Hand* explores why learning NZSL is not an option within the secondary school curriculum, despite being one of New Zealand's official languages.

LOREN FRANKEL SCHOLARSHIP

PhD candidate with the School of Public Health and Psychosocial Studies Shakeisha Wilson was awarded the international Loren Frankel Student Scholarship for her paper entitled *Challenging, reconciling and renegotiating masculinity in the context of ARV treatment for HIV-positive men in Jamaica*.

SOMMELIER OF THE YEAR

Bachelor of International Hospitality Management student Dion Wai received the top prize at the Sommelier of the Year Awards held at the New Zealand School of Food and Wine. Dion took out the Sommelier of the Year title after a series of blind wine tastings, theory and practical assessments. He won return flights to Paris and a hosted trip at Champagne Louis Roederer in the Champagne region.

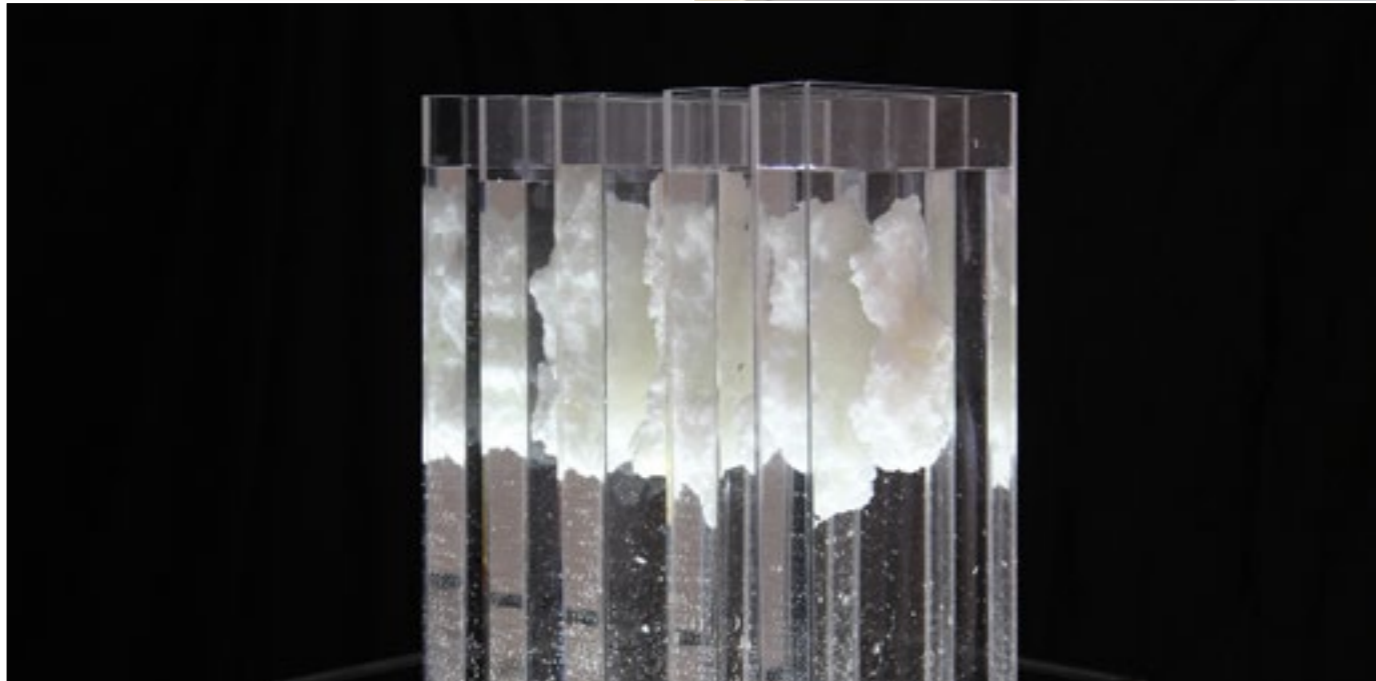
MFAT INTERNSHIPS

Four AUT students were selected to take part in a 10-week summer internship programme through the Ministry of Foreign Affairs and Trade (MFAT) and the Pacific Cooperation Foundation. Meryl Jime, Haunya Hwanawi, Frederino Soares and Jeremiah Tauiiili are high-achieving MFAT scholars from Timor Leste and the Pacific, who were chosen for the internship programme, which provides them with the opportunity to gain work experience in their chosen field, expand their professional networks and improve their readiness for employment.



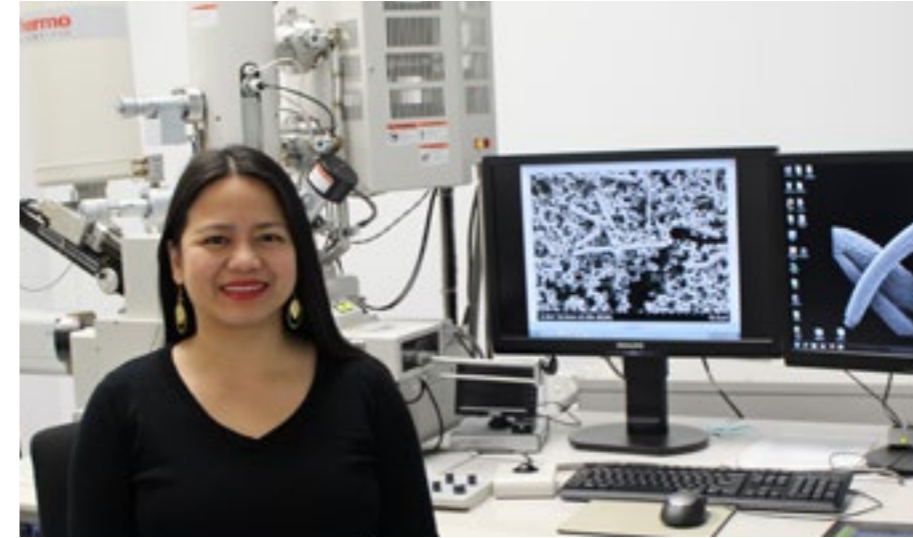
VENICE ARCHITECTURE BIENNALE

Thirteen Spatial Design students showcased their projects at the Venice Architecture Biennale – the world's largest architecture festival – which attracted 200,000 visitors from May–November. AUT's display, which was part of the 'Time Space Existence' exhibition, showcased the work of: Rachel Burton, Jacob Darowski, Hamish Davies, Chelsea Finlayson, Michaella Franklin, Celia Hall, Ethan Hoogenboom, Ethan Horne, Emily O'Hara, Christine Park, Chelsea Pratt, Madeleine Racz, Angus Roberts and Kristie Toms.



Models created by AUT students for the Venice Architecture Biennale
Top left: Ethan Horne | Top right: Chelsea Pratt and Kristie Toms | Bottom: Celia Hall and Michaella Franklin

FALLING WALLS



Engineering PhD candidate Stephanie-Anne Croft placed third in the Falling Walls Competition, held in Australia, where participants have to sum up their research in three minutes.

She was one of five New Zealanders to take part in the competition, and the only one to be placed. Stephanie-Anne is based in AUT's Centre for Kode Technology Innovation and is working to create a barrier system to prevent bacterial infections developing around surgical implants.

BLUES AWARDS



Forty-five top athletes received AUT Blues Awards, which recognise students achieving academically and at the highest level of sport. The top awards for 2016 were:

SPORTSPERSON OF THE YEAR

Cory Bennett

Cory is a member of the New Zealand men's hockey team – the Blacksticks – achieving 37 international caps and scoring 10 goals. In 2016 he was part of the Blacksticks team which won a test series against Korea and Malaysia.

Cory is currently completing a Bachelor of Business and Bachelor of Sport and Recreation conjoint, and despite the high demands of his sporting commitments, maintains an A average.

ATHLETE OF THE YEAR

Caitlin Ryan

Caitlin is a member of the New Zealand women's K4 kayak team which finished fifth in the K4 500m final at the 2016 Rio Olympics. She was part of the K4 team that placed third overall at the 2016 World Championships in the Czech Republic, and at the 2016 New Zealand Canoe Sprint Championships Caitlin placed second in the K2 500m and third in the K1 200m and K1 500m.

Caitlin is currently studying towards a postgraduate diploma in health professional education at AUT.

APEC VOICES OF THE FUTURE

Business student Izzy Stangl was one of four young people chosen to represent New Zealand at the APEC Voices of the Future summit, held in Peru in November. She joined 140 participants from 21 economies of the Asia Pacific, for a discussion on ways of getting young people engaged in quality growth and human development between the member economies.



IZZY STANGL

Securing a place at the Voices of the Future summit is a highly competitive process. Delegates need an excellent track record of community service and an advanced and astute interest in trade, the economy, geopolitics and international relations. Izzy, who is studying a Bachelor of Business majoring in Design and Marketing, was born in Indonesia and has visited 24 countries. She has worked with the Young Enterprise Trust, where she won the International Trade Challenge in Hong Kong, and with the Aera Foundation, established by international entrepreneur and AUT Adjunct Executive Professor Derek Handley.

Izzy says she was thrilled to have been selected to represent New Zealand and AUT at the summit.

"Listening to the top leaders in government and industry will give me an unparalleled insight into the Asia Pacific economy and the APEC alliance. I'm especially interested in agricultural trade, the impact that rapid globalisation is having on each country's SMEs and the challenges we face as a united front in future years to come."

EUROPEAN STREET DESIGN CHALLENGE

AUT master's students Sarah Loggie, Jacques Foottit, Lisa Clist and Jenna Gavin beat nine teams from around the world in the European Street Design Challenge at the Futur-en-Seine Digital Festival, where they had to redesign an unused and neglected transitional space in Paris.

INTERNATIONAL CULINARY COMPETITION

Culinary Arts student Jamin Gibson was part of the team that won an international culinary competition in Ho Chi Minh in front of 170 guests, including Tertiary Education, Skills and Employment Minister Steven Joyce.

ROOKIE

AUT's annual Rookie show is a prestigious fashion event showcasing collections by selected final year students. Attended by fashion media and industry, it is a significant kick-start for the careers of young designers, with many going on to launch their own labels and work nationally and internationally.

PHILLIP VON FURY

In just three years, Phillip Von Fury went from living in small-town New Zealand to being named one of the country's top emerging fashion designers.

His debut menswear collection, inspired by the 1920s Institute for Sex Research, opened the 2016 Rookie show.

Fashion magazines *VIVA* and *FashionNZ* described Phillip's champagne satin strapless jumpsuit as a standout look.



LOCAL HERO

AUT postgraduate Communications student Joshua Iosefo was named one of Auckland's 'Local Heroes' for services to the community as part of the 2016 Kiwibank New Zealander of the Year Awards.

JOSHUA IOSEFO

Joshua Iosefo was one of a handful of people honoured at the New Zealander of the Year Awards in November. The 'Local Heroes' category highlights everyday people doing exceptional things. At 22 years old, Joshua is making a positive change to school leavers by mentoring through AUT's UniPrep programme. He is a strong voice for Pacific people living in New Zealand, both at university and from his time as a student at Auckland's Mt Roskill Grammar School.

"I love empowering young people. I am part of something that upskills young people and helps them to realise their full potential," Joshua says.



PACIFIC YOUTH AWARD

At a ceremony held at Parliament, Manako Nemaia received the BNZ Commercial and Corporate Category Award as part of the Prime Minister's Pacific Youth Awards.

MANAKO NEMAIA

Manako Nemaia, who graduated in December with a Bachelor of Business majoring in Accounting, received a paid four-month internship at BNZ for winning the award which recognises academic achievement in accounting, commerce, marketing and international business.

Manako was the recipient of a three-year scholarship from the Faculty of Business, Economics and Law. She provides academic and pastoral care for other students in her role as peer leader and is a mentor for school-leavers as part of the UniPrep programme run at AUT's South Campus.

Manako says she wants to become a qualified accountant and aspires to help grow New Zealand companies, with the goal of one-day building her own business.





OUR ENGAGEMENT

AUT places a great deal of emphasis on its connectivity – with industry, communities, and other like-minded organisations.

It is through engagement with these organisations and the individuals within them that we establish learning and experiential opportunities for our students, and foster collaboration in research and development projects.

In 2016 AUT established its AUTEUR Influencer Network of key leaders from

industry, community and government to further promote engagement and interaction.

Throughout the year we placed increased attention on our rapidly growing alumni, now numbering 75,000, and located across the globe. We also made a number of key awards

to individuals who have made a special contribution to the University.

Details of these awards and profiles of key contributors to AUT's development in 2016 are provided in the pages to follow.

INDUSTRY

AUT has a long and successful history of engaging with industry and business. Our partnerships help prepare students for the workforce and provide our partners with fresh talent, ideas and research that can benefit business and communities.

ASB WATERFRONT THEATRE

AUT strengthened its long-standing partnership with the Auckland Theatre Company in 2016, becoming a foundation partner in the ASB Waterfront Theatre, which opened in September. The 660-seat theatre provides creative learning opportunities for students, artists and the wider community, and is a major contribution to Auckland's development as a vibrant and international city.



CAREERS FAIRS

AUT held ICT and Engineering, and Accounting and Finance careers fairs in 2016, providing students the opportunity to meet potential employers and learn about careers in their respective fields.

Hundreds of students attended the fairs where they got to talk to employers from organisations, such as:

- IBM
- Deloitte
- Audit New Zealand
- Datacom
- Orion Health
- BDO Auckland
- KPMG
- PwC
- ASB
- Fletcher Building
- Xero
- Catalyst IT



SPARK

In 2016 AUT signed an agreement with Spark to join forces to solve real-world commercial problems with digital tools. This is the first time Spark will work directly with students to explore and create new digital technologies, and it will provide AUT students with exposure to a creative alliance with industry specialists, including artists, designers, engineers, gamers and business leaders.

SHADOW A LEADER DAY

Now in its seventh year, Shadow a Leader Day pairs a secondary school student and an AUT Faculty of Business, Economics and Law student with a business leader for a day. In 2016 70 senior leaders hosted students for an insight into their working day, which included board meetings, team building, sales presentations, marketing discussions and strategy and planning meetings.



SEDDON FELLOWS

In November Joff Mitchell (Senior Managing Director, Zolfo Cooper) and Bill Middleton (President, Corporate Capital Group; Director, USA Rugby Board) were presented with Seddon Honorary Fellowships at an event in New York. The fellowships recognise Joff and Bill's significant business achievements and their generous contributions to the University and, in particular, the AUT Internz programme.

KEA

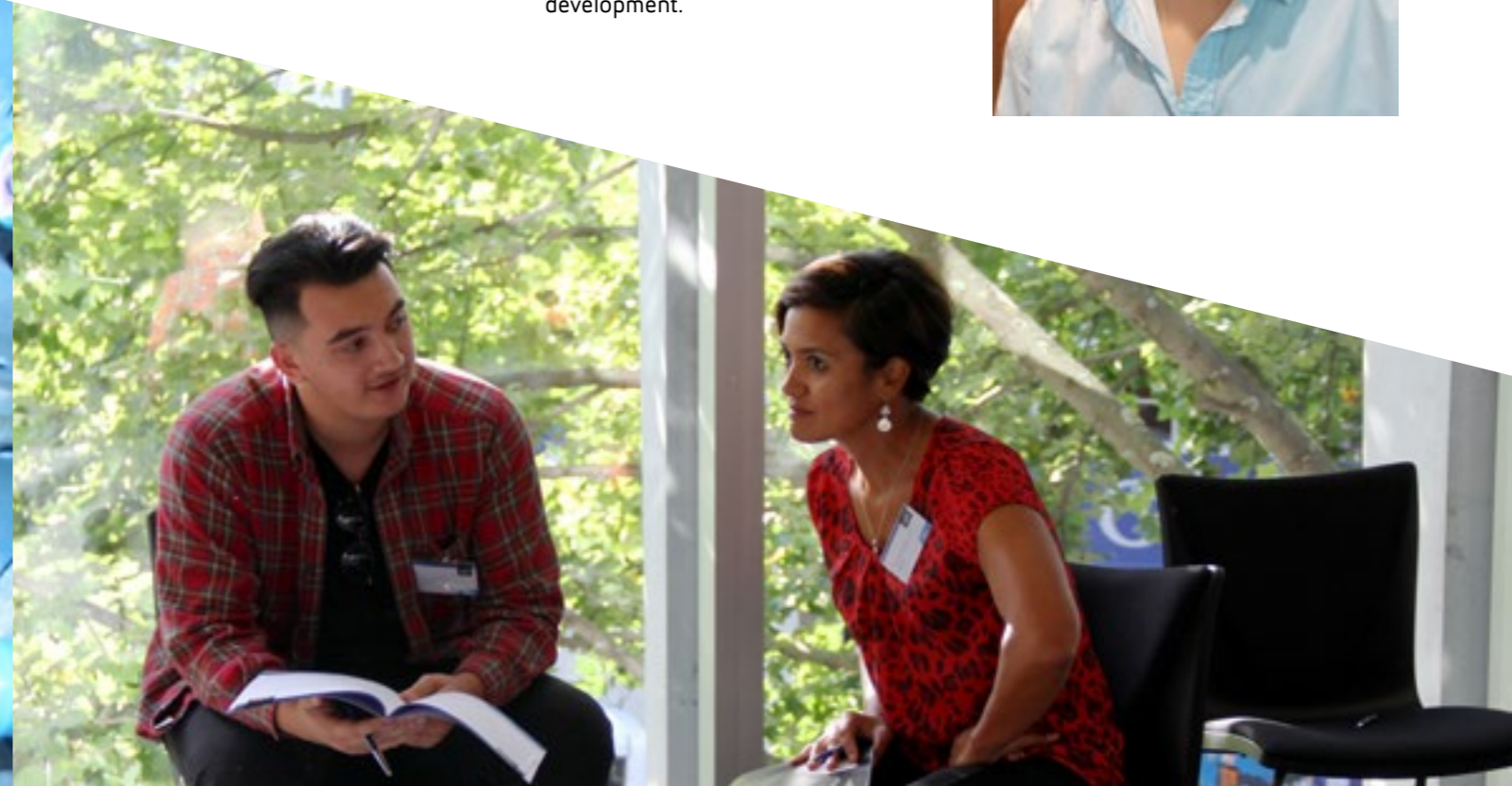
AUT is the education partner of Kea – a network connecting Kiwis around the world. In 2016 we came together to establish a mentoring programme, in which 15 AUT students were partnered with business people from Kea's global network.

BRENDAN ALLAN

Being mentored by an industry expert helped Brendan Allan, who is studying a Bachelor of Computing and Information Sciences, confirm he is on the right track with his career aspirations. Brendan, who is a Woolf Fisher First-in-Family Scholarship recipient, was matched with Lamar Ah-Chee, a Software Developer at Datacom.

"I didn't really know what to expect going into the mentoring programme, but it was fantastic. I knew I wanted to work in IT but the field is so big and diverse I wasn't sure what to specialise in.

"Getting an insight from my mentor Lamar meant I'm much more confident about making the transition from student to professional and now I know I want to go into software development."



1. AUT Business student Anton Vera and Epsom Girls Grammar School student Edan Bicheno learn about Just Water International from Managing Director Tony Falkenstein during Shadow a Leader Day
2. Bachelor of Communication Studies student Nikora Price meets his mentor, TVNZ News Reporter Peata Melbourne during the AUT-Kea mentoring programme pilot

AUTEUR NETWORK

In 2016 AUT established the AUTEUR Influencer Network, which brings together industry, community and government leaders to work with the University on pressing issues for New Zealanders. The AUTEUR Network shares leading academic thought leadership and research, and taps into contemporary thinking from outside the university.

AUTEUR NETWORK MEMBERS:

- **Marianne Archibald**
CEO, Archibald & Co
- **Grant Beck**
ONZM, New Zealand Olympic Coach and Sailor of the Year 2011
- **Vivien Bridgwater**
GM Destination and Marketing, ATEED
- **Sandy Burgham**
Founder, PLAY Contemporary Leadership Colab
- **Nat Cheshire**
Director, Cheshire Architects
- **Mike Davison**
Head of Art, Colenso BBDO
- **Graeme Dingle**
ONZM, MBE, Executive Trustee, Graeme Dingle Foundation
- **Sir Rob Fenwick**
KNZM, Conservationist
- **Hamish Franklin**
Director, Integrated Health Care, Green Cross Health
- **Richard Fraser**
Vice-President Engage Solutions, Orion Health
- **Chris Graham**
Director, Film Production Co, GoodLife
- **Stephen Green**
Director and Founder, VectorStock
- **Vincent Heeringa**
Director, Narrative Agency
- **Professor Steve Henry**
Professor of Biotech Innovation, AUT and CEO, Kode Biotech Limited
- **Lewis Holden**
Deputy Commissioner, Auckland
- **James Hurman**
Founder, Previously Unavailable
- **Helen Littlewood**
Business Development, Pixel Fusion
- **Margi Luzanycia**
Associate Director, ilume International
- **John McCarthy**
Manager, The Tindall Foundation
- **Scott Maclachlan**
Director, Saiko Management
- **Diane Maxwell**
Retirement Commissioner



HELEN LITTLEWOOD

Helen Littlewood has 15 years of start-up experience in the software industry, launching and growing a successful corporate publishing tool into the USA and Europe. She now brings this business expertise to Pixel Fusion, a creative tech company that does innovative work in the agile space alongside large corporates and government agencies.

Helen is part of the Innovation Circle, an initiative set up by the Trans-Tasman

Business Circle, and led by Simon Moutter from Spark, which brings together experienced members from across New Zealand's business and creative worlds to help strengthen New Zealand's innovation ecosystem.

Helen has been involved with Playcentre for 12 years and has three children, which she says provides strong motivation to increase the social capital in our communities.

- **Shane Ohlin**
Chief Information Officer, Paymark
- **Brett O'Riley**
CEO, ATEED
- **Adrian Orr**
CEO, NZ Superfund
- **Jim Quinn**
Chief of Strategy, Auckland Council
- **Dame Diane Robertson**
Former CEO, Auckland City Mission
- **Nevak Rogers**
Head Commissioner, Māori Television
- **Justine Ross**
Co-Founder, 42 Below
- **Karen Silk**
General Manager, Commercial, Corporate and Institutional Banking, Westpac NZ
- **Rod Snodgrass**
Director, The Exponential Agency
- **Pauline Winter**
CE, MPIA
- **Ernst Zöllner**
Regional Director Auckland and Northland and Director Road Safety, NZTA



DIANE MAXWELL

As New Zealand's Retirement Commissioner, Diane Maxwell leads the Commission for Financial Capability, which is best known for the Sorted website. She spent the past year travelling around the country talking to New Zealanders about the future, which helped inform her recommendations to the government about changes to retirement income policies.

Diane's goal as Commissioner is to build the financial capability of New Zealanders of all ages, with an emphasis on low-income and vulnerable groups, as well as an increased focus on young people. As the mother of two children, she shares

the concerns of other parents and grandparents over the new challenges that are facing young people at a time when debt levels are high and home ownership is declining – factors that can have a worrying effect on retirement.

Before becoming Commissioner in 2013 Diane worked at the Financial Markets Authority, focusing on the role of regulation post-global financial crisis and the relationship between compliance, regulation and education. Before that she worked at BNZ, where her portfolio included complaints, government relations, media relations, sustainability, events and marketing.



SHANE OHLIN

Shane Ohlin, an AUT alumnus, joined Paymark as its Chief Information Officer in May 2016. He has more than 30 years' experience in technology and management roles in New Zealand and Australia, has been accountable for some of the largest technology projects undertaken in New Zealand and is the founder of www.driverlessplanet.com.

At Paymark Shane is accountable for both the agile digital development team and the mainframe-class core financial switching systems that handle 75% of

the country's retail payments. The team also oversees the wider technology strategy, enterprise architecture and security of the technical systems.

Before joining Paymark, Shane spent six years as a management consultant and 15 years at Spark, during which he undertook stints in strategy, corporate IT and mobile product development. As the CIO for Spark's retail division, Shane managed the \$350M Spark NZ transformation multiyear programme of works.



ADRIAN ORR

Adrian Orr is the Chief Executive Officer of the New Zealand Super Fund and is responsible for general management of the Guardians of New Zealand Superannuation and the New Zealand Superannuation Fund under delegation from the Board.

Adrian joined the Guardians in February 2007 from the Reserve Bank of New Zealand, where he was Deputy Governor. He has held the positions of Chief Economist at Westpac Banking

Corporation, Chief Manager of the Economics Department of the Reserve Bank of New Zealand and Chief Economist at The National Bank of New Zealand. He has also worked at the New Zealand Treasury and the OECD, based in Paris.

Adrian is Chair of the International Forum of Sovereign Wealth Funds and board member of the Pacific Pension Institute.

ADRIENNE WINKELMANN

At the University's summer graduation in December, fashion designer and AUT alumna Adrienne Winkelmann was awarded an honorary doctorate in recognition of her influence and pre-eminent position at the vanguard of New Zealand fashion design, and her ongoing commitment to AUT students and graduates.

Adrienne Winkelmann is one of New Zealand's leading fashion designers, whose work is worn by international politicians including Condeleza Rice and Helen Clark. Adrienne says the beginning of her extraordinary journey is strongly connected to AUT. In the 1980s she studied pattern cutting/ design and business at Auckland Institute of Technology, and says, "AIT was the making of me; I didn't do well at

school, but design and my inspirational lecturers made me 'find my groove'. I have not looked back since."

After completing her studies, Adrienne started her own business, Adrienne Winkelmann Ltd, and quickly became one of New Zealand's pre-eminent fashion designers, known for her rich colour, innovative print and exquisite tailoring.

She remains committed to AUT and helping to develop the next generation of fashion designers. She offers AUT students placements in her business, which are seen as prestigious and professionally enabling because of the exposure students get to the full dimensions of business – from the cutting and fabrications room, to the challenges and culture of retail.



Fashion designer Adrienne Winkelmann at the Adrienne Winkelmann store, Chancery Square, Auckland, 14 December 2016, New Zealand Herald
Photograph by Fiona Goodall / Getty Images

GOVERNMENT

CENTRAL

AUT engages with central government in order to gain support for the University amongst these key decision-makers, promote specific ideas and initiatives, and to contribute to the future of the tertiary education sector.

VICE-CHANCELLOR'S DINNER SERIES

A key initiative established in 2016 was the Vice-Chancellor's Dinner Series – select dinners bringing together AUT academics and business and community leaders with a senior politician for open discussions about issues that matter for New Zealand.

IN 2016 WE HOSTED:

- **John Key**
Prime Minister
- **Bill English**
Minister of Finance
- **Steven Joyce**
Minister for Tertiary Education, Skills and Employment
- **Paula Bennett**
Associate Minister of Finance
- **Amy Adams**
Minister of Justice
- **Andrew Little**
Leader of the Labour Party
- **David Seymour**
Leader of the ACT Party

LOCAL

The relationship between AUT and Auckland Council (and its associated organisations, particularly Auckland Transport and ATEED) continued to develop during 2016 as we pursued opportunities for collaborative research and student internships. With campuses in south, central and north Auckland, AUT is a key part of the city and is represented on Council advisory boards and makes submissions on proposed Council plans and initiatives.

MAYORAL DEBATE



During the 2016 local body elections, AUT hosted a live debate in collaboration with Radio New Zealand. Mayoral candidates Phil Goff, Vic Crone, John Palino and Mark Thomas participated in the debate, which was recorded in AUT's television studio by Visual Communications students and livestreamed on the radio and via Facebook.

COMMUNITY

With three campuses across south, central and north Auckland, AUT is an active member of the diverse communities around us. Our community engagement activities for 2016 include:

LIFEWISE BIG SLEEPOUT

As part of the University's partnership with community organisation Lifewise, AUT hosted the annual Lifewise Big Sleepout in July. One-hundred-and-fifty business and community leaders gave up their home comforts to sleep rough for the night in AUT's Hikuwai Plaza. Five AUT staff members participated in the event, which raised a total of \$333k to help tackle homelessness in the city.

SUSTAINABLE COASTLINES CHALLENGE

In April AUT staff and students teamed up with the Manukau Beautification Charitable Trust, Auckland Council, Wai Care and Sustainable Coastlines to set a New Zealand record for the largest single environmental clean-up at the Puhinui Reserve coastline in Manukau. AUT was designated the clean-up site of Otara Creek, situated near the University's South Campus, with efforts made by the team expected to make an immediate impact on the local waterways.



ACCESSIBILITY

- AUT accelerated its commitment to accessibility during 2016. Working closely with the organisation Be.Accessible, we have continued to take practical steps towards achieving the gold standard for accessibility by the end of 2017.
- The 2016 AUT Business School Excellence in Business Support Awards received the highest rating of platinum from Be.Accessible in recognition of the accessibility of the awards dinner.
- The University has established a cross-disciplinary accessibility research cluster under the leadership of Associate Professor Nicola Kayes. The group is looking to develop the world's first accessibility index, to be launched at the first Global Summit for Accessibility, being held at AUT in mid-2018.

RAINBOW

- In 2016 AUT was re-certified with the Rainbow Tick, and remains the only university in New Zealand to have it. The Tick is given to organisations that demonstrate inclusiveness for members of the Rainbow community.
- AUT has an annual presence as Rainbow community events, and was a platinum sponsor of the 2016 Big Gay Out and participated in the Auckland Pride Parade.
- For the third year, AUT awarded two scholarships through the Gay Auckland Business Association

Charitable Trust. The scholarships are awarded to students who identify as LGBTI, and who are seen as good role models by peers and teachers, as well as having excelled in effort and achievement in their secondary education.

MĀORI

- The University's commitment to language revitalisation was strengthened with \$998k funding received by AUT's Te Ipukarea (the National Māori Language Institute) for two language revitalisation projects. Read more about the projects on page 16.
- Free te reo Māori classes offered at the South Campus were expanded to include more lessons.
- AUT is a partner in Kei a Tātou te Ihi, a leadership and development programme that brings together education providers to support secondary students into higher education.
- AUT promoted 2016 Te Wiki o te Reo Māori (Māori Language Week) through activities and events for staff, students and the community.
- AUT is collaborating with Auckland Council's Southern Initiative to provide a leadership programme focusing on raising educational aspirations of South Auckland young people.
- Community groups, health organisations and tertiary providers attended a public lecture by Sir Mason Durie on Māori Sustainability, hosted at AUT.

PACIFIC

- AUT is a partner in the Pacific Island Leaders of Tomorrow programme, which engaged 120 Pacific secondary students throughout 2016 to help them explore and make informed decisions about their education and careers.
- The University runs the UniPrep and MyFuture programmes, which provide pathways for secondary students, particularly Pacific and Māori students, into university education. Read more about UniPrep and MyFuture on page 34.
- The Asia Pacific Report website, which aims to boost Asia Pacific news and analysis in New Zealand, was launched by AUT's Pacific Media Centre.
- AUT partnered with the University of Otago and the University of Auckland to establish the New Zealand Institute for Pacific Research. Read more about the Institute on page 14.
- The University promoted Pacific language weeks throughout the year, holding events and activities for staff, students and the community, including public language debates hosted at the South Campus.
- AUT sponsored the Cook Islands stage at Polyfest, where we engaged with thousands of young people at the AUT stand, where they could learn more about studying at AUT.

INTERNATIONAL

AUT has thousands of partnerships with organisations, governments and institutions around the world, which provide teaching, learning and research opportunities for staff and students.

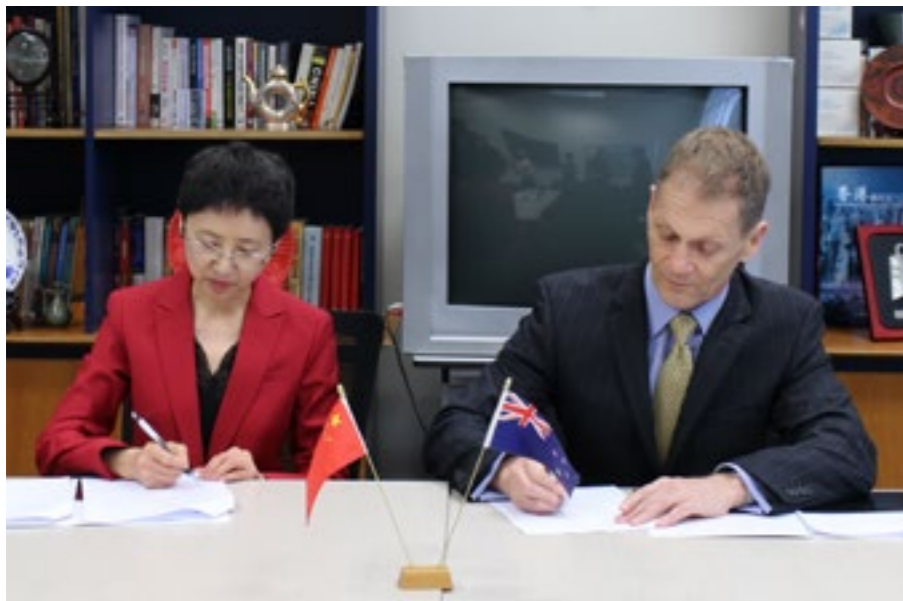
TOP **20** IN THE
WORLD
& **1** ST
IN AUSTRALASIA
FOR INTERNATIONAL OUTLOOK

AUT HAS
5/5 QS STARS
★ ★ ★ ★ ★
FOR INTERNATIONALISATION

OUR INTERNATIONAL ENGAGEMENT IN 2016 INCLUDED:

CHINA SCHOLARSHIP COUNCIL

In December AUT signed an Memorandum of Understanding with the China Scholarship Council. The agreement will facilitate a scholarship programme aimed to foster long-term research co-operation between AUT and Chinese universities.



Dr Jinghui Liu, Secretary General of the China Scholarship Council, and Professor Nigel Hemmington, AUT Pro Vice-Chancellor International, signing the MOU

The agreement recognises AUT as a partner of the Council, which will help raise the profile of AUT as a top-quality international university in China, and will provide a pipeline of high-quality Chinese PhD students to the University.

TAMAN PROJECT

AUT signed an agreement with the Indonesian Ministry of Education and Culture to deliver an arts and culture development programme to 50 Indonesian leaders. This programme serves as a preliminary project for the wider programme, Project Taman, where AUT will lead the professional development of Indonesian school teachers in New Zealand in 2017.

EUROPE HOUSE

In 2016 Europe House was opened by European Commissioner for International Cooperation and Development Neven Mimica, and Foreign Affairs Minister Murray McCully. Europe House – an event and conference space at the City Campus – is a product of collaboration between the EU Delegation to New Zealand and AUT.

SEEDS FOR THE FUTURE



As part of the University's partnership with global technology company Huawei, five Computer Science and Engineering students from the South Campus visited China through the Huawei Seeds for the Future programme. Students spent a week learning about Chinese culture in Beijing and a week visiting Huawei's HQ in Shenzhen, learning about research and development at one of the largest technology companies in the world.

SHRI PRANAB MUKHERJEE



The President of the Republic of India, Shri Pranab Mukherjee, was hosted at AUT's City Campus at the invitation of the Ministry of Foreign Affairs and Trade. President Mukherjee met some of AUT's Indian students and announced the New Zealand Excellence Awards 2016 – a scholarship scheme for Indian students to study in New Zealand.

ALUMNI

As the fastest growing university in New Zealand, AUT's alumni community is rapidly expanding. We actively engage with our graduates located around the world, providing ways to connect them with each other and us.

75,000+
ALUMNI

**AUT ALUMNI ARE WORKING
IN LEADERSHIP POSITIONS
AROUND THE WORLD,
INCLUDING AT:**

- FACEBOOK
- MICROSOFT
- TWITTER
- TESLA
- SNAPCHAT
- APPLE
- GOOGLE
- UBER

70%
LIVE & WORK OVERSEAS

**IN 2016 ALUMNI EVENTS
WERE HOSTED IN:**

- LONDON
- SAN FRANCISCO
- NEW YORK
- HO CHI MINH CITY
- VERMONT



CLAIRE STARKEY

Claire Starkey says she has not let the fear of change stop her, having worked for five magazine genres in four countries over the last 10 years. During this time, she quickly rose to editor in chief of Cleo magazine in Singapore, and describes her job as creation, collaboration and overseeing of all editorial in the 'Cleo universe'.

Claire graduated from AUT in 2006 with a Bachelor of Communications majoring in Journalism. A highlight of her studies was the workplace experience she undertook in her final year at a newspaper company, as well as a small magazine office in Wellington.

She says she still relies on everything AUT taught her about writing and sticking to deadlines. "I'm also forever surprised at how often I think about the ethics and behavioural theories we studied. Most importantly AUT taught me how to take feedback."

Claire's advice to students is: "Not a single employer has ever asked me for my grades. Focus on developing your skills and work hard, but don't stress yourself out too much."



ADRIANA CHRISTIE

Adriana Christie knew from an early age she wanted to get into social enterprise. At the age of 13, while growing up in Bogota, Colombia surrounded by poverty, she realised that if you don't have a business and you don't generate revenue, then you can't help people.

Adriana moved to New Zealand in 2007 and started studying at AUT shortly after. Her management major in the Bachelor of Business she graduated with in 2013 taught her about entrepreneurship, innovation and business strategy, which gave her the skills she needed to start her own business. She also competed in business case competitions in Singapore and the USA during her studies.

Adriana is now the co-owner of Pallet Kingdom, a business that has two purposes – the first being to recycle wooden pallets into furniture, and the second is to work with disadvantaged teens who have been referred by their parents or the DHB.

In 2016 Adriana was elected a member of Auckland Council's Waitemata Local Board in the local body elections.



DANIEL ZHOU

As the managing director of Huawei in the Shanghai region, Daniel Zhou is responsible for an annual turnover of US \$1.5 billion and manages more than 400 employees across the company's carrier, enterprise and consumer business groups.

Daniel first studied engineering, followed by a successful career in Information Technology (IT). In 2004 he chose to upskill and enrolled in a Master of Business Administration at AUT. He says he learned cross-cultural communication, teamwork and problem-solving skills, which are essential elements within his day-to-day managerial role. He also worked as an IT systems support analyst for the Manukau City Council during his studies.

Daniel first joined Huawei after graduating from AUT in 2007, initially working at the company's European office. During his eight years in Europe, he quickly progressed from account manager to managing director for the Czech Republic, Slovakia, Austria and Slovenia.

Now living in China, Daniel says he enjoys working for a business with a strong global brand, good company vision and excellent collaboration.





OUR STAFF

The University is its staff, and we are proud of the many contributions made by our 2500 staff to the development of AUT throughout the year.

In 2016 we acknowledged excellence in research, teaching and professional staff at our annual Excellence Awards, and celebrated a number of staff who were honoured by external agencies.

The number of professors and associate professors at AUT continued

to grow through appointment and promotion, reaching 113 professors and 88 associate professors by the end of 2016.

Details of these and other staff achievements are highlighted in the pages that follow.

AUT EXCELLENCE AWARDS

The annual AUT Excellence Awards recognise and celebrate excellence across the University by our teachers, researchers and professional staff. In October hundreds of staff members gathered for the biggest internal event of the year to celebrate their colleagues in a ceremony hosted by Vice-Chancellor Derek McCormack and Newshub anchor Samantha Hayes in the impressive foyer of the Sir Paul Reeves Building.

VICE-CHANCELLOR'S AWARDS FOR RESEARCH EXCELLENCE

- **Individual Research Excellence**
Associate Professor Gail Pacheco
- **Postgraduate Research Supervision**
Associate Professor Candice Harris
- **Emerging Researcher**
Dr David Rice
- **Research Team**
Ergonomics and Human Factors Group
Led by Associate Professor Mark Boocock; Liz Ashby, Dr Grant Mawston, Dr Fiona Trevelyan

VICE-CHANCELLOR'S AWARDS FOR TEACHING EXCELLENCE

- **Irshad Ali**
 - **Dr Denise Atkins**
 - **Patsi Davies**
 - **Dr Jane Verbitsky**
 - **Doctor of Health Science Teaching Team**
Led by Professor Liz Smythe; Associate Professor Peter Larmer, Associate Professor Deb Payne, Associate Professor Duncan Reid, Dr Deb Spence, Associate Professor Val Wright St Clair
- Special recognition**
- **Centre for Refugee Education Teaching Team**
Led by Maria Hayward; Eddie Brafield, Marilyn Carroll, Meriel Cavanagh, Jeremy Cooper, Pip Dodd, Lisa Girvan, Minoo Gorgani, Ruth Ham, Penny Hickey, Man Hau Liev, Catherine McKinlay, Tony Masterton, Pip Senior, Marianna van den Bergh

VICE-CHANCELLOR'S AWARDS FOR PROFESSIONAL EXCELLENCE

- Individual**
- **Deborah Blake**
 - **Lynne Flynn**
 - **Marybeth Takeda**
- Team**
- **NZAID Scholarships Team**
Led by Sacha Pointon; Ruth O'Sullivan
 - **Space Planning and Timetabling Team**
Led by Corrie Cook; Wayne Brown, Chris Cho, Blair Daly, Steven Foot

SPECIAL COMMENDATION FOR EXCELLENCE

For exceptional contributions to the university's student relations

John Carlson

2016 UNIVERSITY MEDAL

In recognition of a sustained and outstanding contribution that reflects and enhances the academic development and reputation of the university

Professor Patria Hume

Read more about Patria on page 22.



PROFESSORS EMERITI

In 2016 the AUT Council acknowledged three people with the award of the title Emeritus Professor:

PROFESSOR IAN SHIRLEY

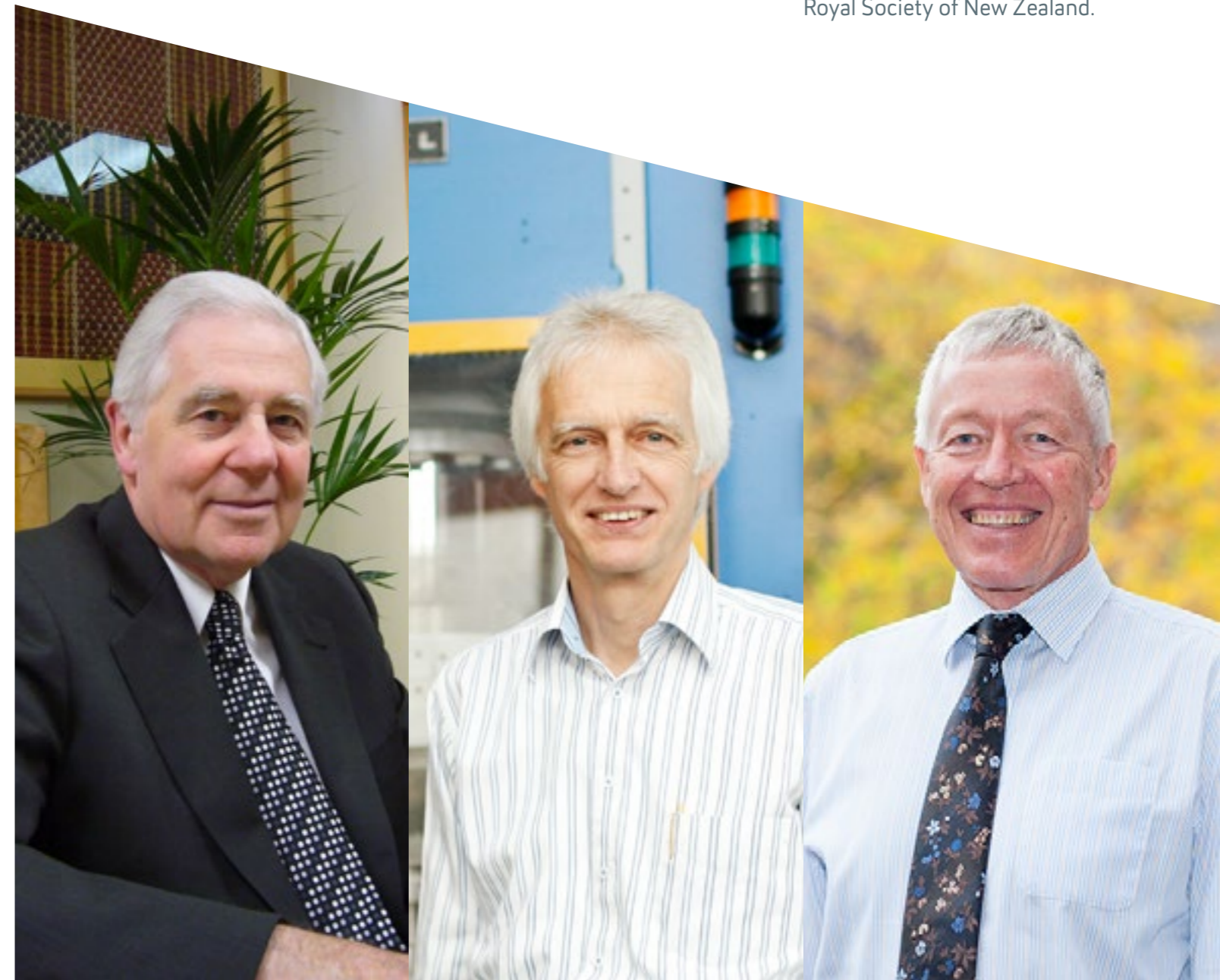
Professor Ian Shirley was recognised for his extensive work in social policy research, his leadership of research development at AUT and his founding and leadership of the Policy Observatory.

PROFESSOR THOMAS NEITZERT

Professor Thomas Neitzert was recognised for his research in the field of mechanical engineering, with a strong focus on sustainable engineering, and his leadership of the University's Sustainability Taskforce.

PROFESSOR RICHARD BEDFORD

Professor Richard Bedford was recognised for his work and international reputation in migration research, and his significant leadership contributions to research development at AUT. He is currently the President of the Royal Society of New Zealand.



PROFESSORS

AUT has more than 200 professors and associate professors. The following staff were appointed professors in 2016:

- **Mark Boocock**
Professor within the School of Clinical Sciences
- **Candice Harris**
Professor within the Business School
- **Wayne Hope**
Professor within the School of Communication Studies
- **Michael Lück**
Professor within the School of Hospitality and Tourism
- **Sigrid Norris**
Professor within the School of Communication Studies
- **Gail Pacheco**
Professor within the School of Economics
- **Duncan Reid**
Professor within the School of Clinical Sciences
- **David Towns**
Professor within the School of Science

PROFESSOR GAIL PACHECO



Gail Pacheco is a Professor in AUT's School of Economics and the Director of the New Zealand Work Research Institute. The Institute aims to contribute high-quality research, both nationally and internationally, across a broad multidisciplinary programme concerned with people and work; with topics of focus ranging from labour market dynamics, to diversity in the workplace, and the future of work.

Gail has played a vital role in expanding the Institute's activities and external research income and has set up an advisory board to increase engagement with business, government and the community. She has completed research contracts with the Productivity Commission, Ministry for Women, Vodafone, Careers New Zealand, and the Department of Labour (to name a few).

Gail says she likes to use her research to contribute to public debate, and is often asked to comment in the media on her areas of expertise: the minimum wage, youth labour market dynamics, the gender wage gap and the future of work. To date she has published 36 journal articles, of which 19 are A* and A-ranked.

At the 2016 AUT Excellence Awards, Gail received the award for Individual Research Excellence – the University's highest award to an academic staff member for excellent research achievement over a number of years.

PROFESSOR MICHAEL LÜCK



Michael Lück is a Professor of Tourism within AUT's Faculty of Culture and Society. He has been instrumental in establishing coastal and marine tourism as a recognised field of study. His long-term research has focused on the educational experience of participants in marine mammal tours, particularly swim-with-dolphin tours in New Zealand.

Raised in Germany, Michael moved to Dunedin to do his PhD in 1997 and taught in Scotland and Canada before joining AUT in 2005.

Michael says he wants to make his research accessible and founded the international peer-reviewed journal *Tourism in Marine Environments*, which is now in its eleventh volume.

He is the associate editor of the *Journal of Ecotourism and Human Dimensions of Wildlife* and is the founding co-chair of the International Coastal and Marine Tourism Society, which launched in 2012 and has more than 200 academic, government and industry members. To date he has co-edited and written 12 books.

ACHIEVEMENTS & AWARDS

Throughout 2016 AUT staff were recognised with national and international awards for their contributions to academia and services to the community.

MAX ABBOTT

Professor Max Abbott was made a Companion of the New Zealand Order of Merit in the 2016 New Year Honours list. He was recognised for his outstanding services to health, science and education over his career at AUT and beyond.

2016 marks 25 years for Max as Dean of the Faculty of Health and Environmental Sciences. He also leads the North Campus as Pro Vice-Chancellor, is Co-director and Founder of the National Institute for Public Health and Mental Health Research, and directs two of the Institute's research centres.

JUDY MCGREGOR

Professor of Human Rights Judy McGregor won the Supreme Award in Governance at the 2016 Women in Governance Awards, which is awarded to "a New Zealand woman who, through a lifetime commitment to promotion, support and mentoring, will have achieved excellence in governance".

Judy was also named New Zealand-UK Link Foundation Visiting Professor to London, where she will study how to improve the effectiveness of parliamentary oversight of human rights to address democratic deficits.

MARILYN WARING

Professor of Public Policy Marilyn Waring was named one of Zonta New Zealand's 50 Women of Achievement.

An organisation of professionals empowering women around the world, Zonta recognised Marilyn, saying she has "dedicated her career to advancing the status of women internationally [and] is known as the principal founder of feminist economics, which argues that women's work has not traditionally been factored into economic study".



JED MONTAYRE

Nursing lecturer Dr Jed Montayre was named Young Nurse of the Year by the New Zealand Nurses Association. The award recognises outstanding practice, contribution to nursing and entrepreneurship in young nurses.

Jed is an internationally qualified nurse, moving from the Philippines in 2011, who researches the effects of ageing on society, particularly among older migrants.

JOHN KELLEHER

Culinary arts lecturer John Kelleher was part of the New Zealand's national chefs' team that won silver and bronze medals at the Culinary Olympics in Germany.

The seven-person team is the first that New Zealand has sent to the Olympics for 28 years. The team competed against 2000 chefs from 40 countries, taking home the silver medal in the hot kitchen section and the bronze medal in the cold table section.

ERICA HINKSON

Associate Professor Erica Hinckson received an award acknowledging her contribution to New Zealand's success in the business events sector at the Tourism New Zealand 2016 Business Events National Awards. Erica was recognised for the pivotal role she played in winning the bid to host the 2020 International Society of Behavioural Nutrition and Activity conference, which will be held at Auckland's Aotea Centre.

In 2015 Erica was inducted into the University of California, San Diego's (UCSD) Athletics Hall of Fame. The former UCSD student was recognised for her significant achievements in track and field, and her exceptional contribution to the heritage of UCSD athletics.

LEXIE MATHESON

Lexie Matheson was named an Officer of the New Zealand Order of Merit in the Queen's Birthday Honours list. Lexie, who is a senior lecturer in event management and a member of Auckland Council's inaugural Rainbow Communities Advisory Panel, received the honour for services to performing arts, education and LGBTQI rights.

**TIM DAVISON
TASLEEM HUSSEIN**

Tim Davison from Strategy and Planning and Tasleem Hussein from ICT Services received the Award for Technology Innovation and the Supreme Award at the 2016 Microsoft Tertiary ICT Excellence Awards for NINA – a prototype digital assistant that uses artificial intelligence to improve students' experiences at AUT.



OUR PLACES & SPACES

The University's \$450M campus development plan aims to create vibrant and attractive campuses with efficient and well-used facilities that contribute to the University's strategic aims and national priorities.

In 2016 a number of milestones from this plan were reached across our three campuses, as major developments commenced at the City and North campuses and the Mana Hauora Building at the South Campus was completed.

We also made significant progress towards campus sustainability and access during the year.

Highlights of the university's infrastructure development are provided on the pages to follow.

CAMPUS DEVELOPMENTS

3 CAMPUSES ACROSS AUCKLAND NORTH, CITY, SOUTH

3 SPECIALIST LOCATIONS AUT MILLENNIUM, WARKWORTH RADIO ASTRONOMICAL OBSERVATORY, AUT CENTRE FOR REFUGEE EDUCATION

Education and Health Sciences are predominantly taught at the North Campus, while the City Campus houses a diverse range of disciplines including Business, Art and Design, Social Sciences, Māori Development and Engineering. The range of subjects on offer at the South Campus continues to grow, in consultation with local community and employer groups, and includes Business, Paramedicine, Public Health and Law.

AUT IS CURRENTLY INVESTING IN MAJOR STUDENT-CENTRED INFRASTRUCTURE PROJECTS ON EACH OF OUR THREE TEACHING CAMPUSES:

NORTH CAMPUS

AUT's major development at the North Campus on Akoranga Drive is the A1 Building. A1 will create a central hub for students, with social and collaborative learning areas, alongside classrooms and individual study spaces. It is expected to transform the campus in the way that the Sir Paul Reeves and Mana Hauora buildings have done at the City and South campuses.

During 2016 AUT's Integrated Health Clinic was relocated from the North Campus to a new premises at 3 Akoranga Drive. The clinic provides supervised clinical experience for health science students and is open to the community for services in podiatry, rheumatology, physiotherapy, oral health, hydrotherapy, counselling, psychology and occupational therapy.

CITY CAMPUS

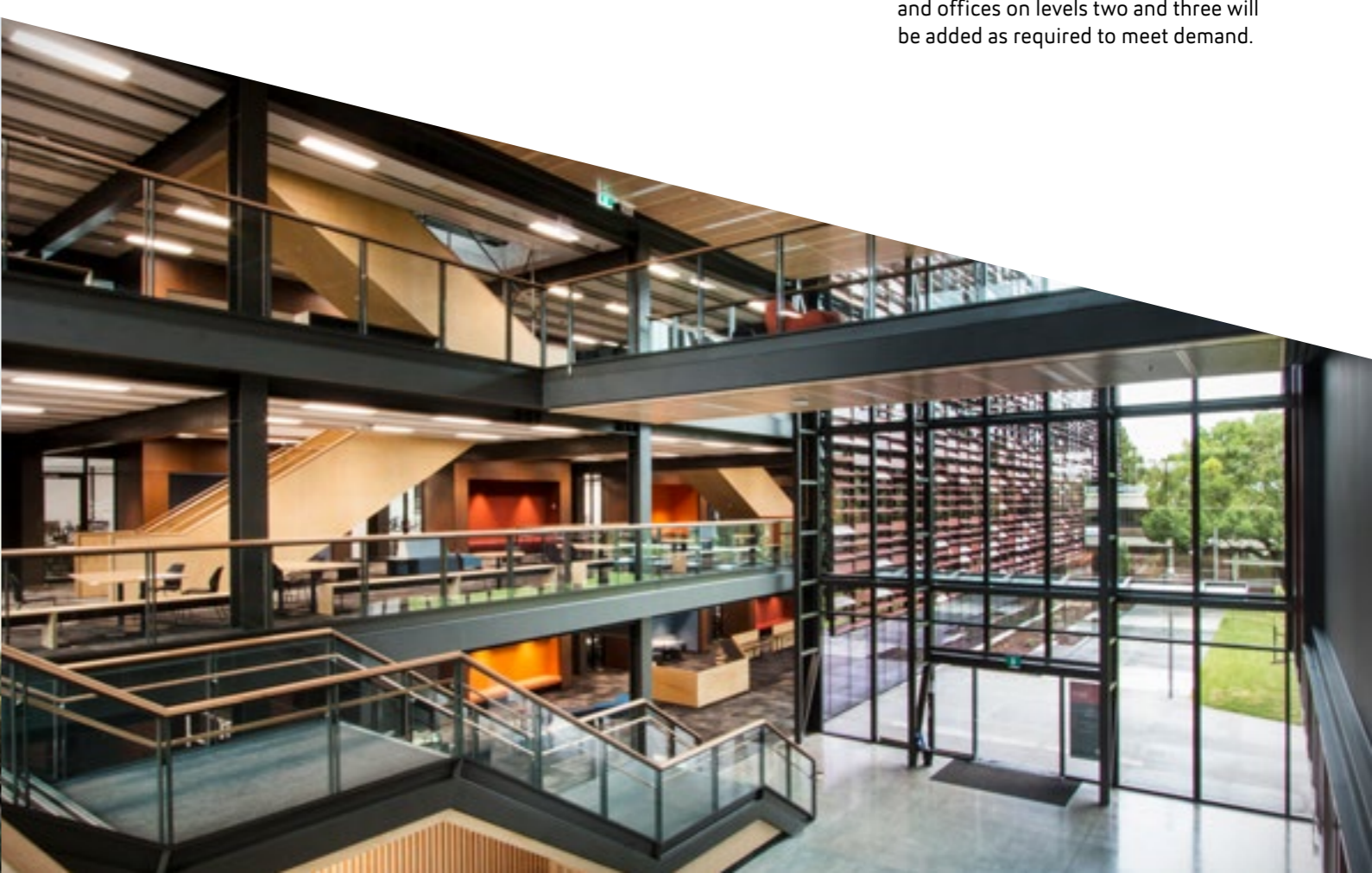
Construction of the new Engineering, Technology and Design (ETD) precinct commenced in late 2016, with the demolition of the St Paul Street carpark. It is due to be completed in time for Semester 1, 2018.

The ETD precinct will feature a 12-storey, \$100M building that will be home to the University's School of Engineering, Computer and Mathematical Sciences. Sustainable design and construction, visible plant rooms and exposed structural connections for students to view will make it a truly educational building.

SOUTH CAMPUS

Construction of the largest building at the South Campus – the Mana Hauora Building – was completed in December 2016, and was officially opened by Prime Minister Bill English in March 2017. The building, which incorporates a number of sustainability design features, borders a central grassed area that is now the new heart of the campus. At 11,200m² it has the capacity to take the campus to its 2020 target of 3000 equivalent full-time students (EFTS).

To manage costs in the intervening years, the University will furnish the building in line with EFTS growth. The first stage includes classrooms, lecture theatres, postgraduate areas, offices and space for events and group or individual study. Additional classrooms and offices on levels two and three will be added as required to meet demand.



1. Artist impression of the Engineering, Technology and Design precinct at the City Campus
2. The Mana Hauora Building located at AUT's South Campus

SPECIALIST LOCATIONS

AUT MILLENNIUM

Located in Mairangi Bay, AUT Millennium is New Zealand's world-class sports training facility, which aims to help the community to be healthy and our top athletes to be champions.

It is home to High Performance Sport New Zealand and the Sports Performance Research Institute New Zealand (SPRINZ), and features an outdoor athletics track, coach development centre, a gym, medical centre and a 50m Olympic swimming pool. In 2016 a second Olympic pool in the new National Aquatic Centre was opened.

AUT Millennium was the training base for half of New Zealand's medal successes at the 2016 Olympics in Rio de Janeiro.



CENTRE FOR REFUGEE EDUCATION

AUT's Centre for Refugee Education, located in Mangere, provides an on-arrival six-week education programme for the 750 refugees who come to New Zealand each year under the government quota scheme.

The education programme teaches English language skills at early childhood, primary, secondary and adult levels, as well as orientation to life in New Zealand.

In 2016 the Centre's teaching team received special recognition from the Vice-Chancellor at the AUT Excellence Awards. Read more about the team on page 31.

WARKWORTH RADIO ASTRONOMICAL OBSERVATORY

The Observatory, located 70km north of Auckland, operates two radio telescopes maintained by AUT's Institute for Radio Astronomy and Space Research.

The Observatory and corresponding educational programme at AUT – the Astronomy Major in the School of Computer and Mathematical Sciences – are important steps for New Zealand towards its participation in the Square Kilometre Array (SKA) project. Read more about the SKA project on page 18.



SUSTAINABILITY

AUT is committed to achieving sustainability and taking action in light of local and global challenges. The University's Sustainability Taskforce, set up in 2012 by Vice-Chancellor Derek McCormack, developed our sustainability goals and helps nurture a university-wide culture of sustainability through learning, teaching, research, partnerships and how we operate our facilities.

OUR BUILDINGS

Developing buildings that are inherently more sustainable has been a key focus when planning developments across the University.

AUT received \$500k funding from the Energy Efficiency and Conservation Authority for sustainability initiatives for the Mana Hauora Building at the South Campus. The end goal for the building is to have a lower annual

energy use (KWh/m² per year) than a New Zealand 'Best Commercial' office building. The features that have been built into the building design to reduce energy use include: solar shading, thermal insulation, high-efficiency LED

lighting, combined heat pump chillers, energy sub metering, glazing ratios, displacement ventilation, a lighting control strategy and onsite waste water treatment.

UN SUSTAINABLE DEVELOPMENT SOLUTIONS NETWORK

In 2016 AUT became the second university in New Zealand to join the United Nations Sustainable Development Solutions Network. The network was established to mobilise scientific and technical expertise from academia, civil society and the private sector in the implementation of the UN Sustainable Development Goals.

AUT's contribution to help achieve those goals focuses on affordable and clean energy, sustainable cities and communities, life on land, responsible consumption and production, and clean water and sanitation.





AUCKLAND UNIVERSITY OF TECHNOLOGY

Private Bag 92006, Auckland 1142
55 Wellesley Street East, Auckland, New Zealand
Phone: +64 9 921 9999 | www.aut.ac.nz