

TSUNAMI

WHAT IS A TSUNAMI?



A series of ocean waves caused by an earthquake, landslide or volcanic eruption. Waves can be 10 metres or higher.

WHEN DOES IT OCCUR?



Anytime and anywhere, and if local, can attack in minutes. You cannot outrun a tsunami.

WHAT IS ITS IMPACT?



Floods coastal areas devastating homes, contaminating soil, killing coral, and flattening landscapes.

SIGNS OF A TSUNAMI

FEEL



Strong or long earthquake: the ground shaking severely

SEE



Unusual receding of ocean water or oncoming wall of water

HEAR



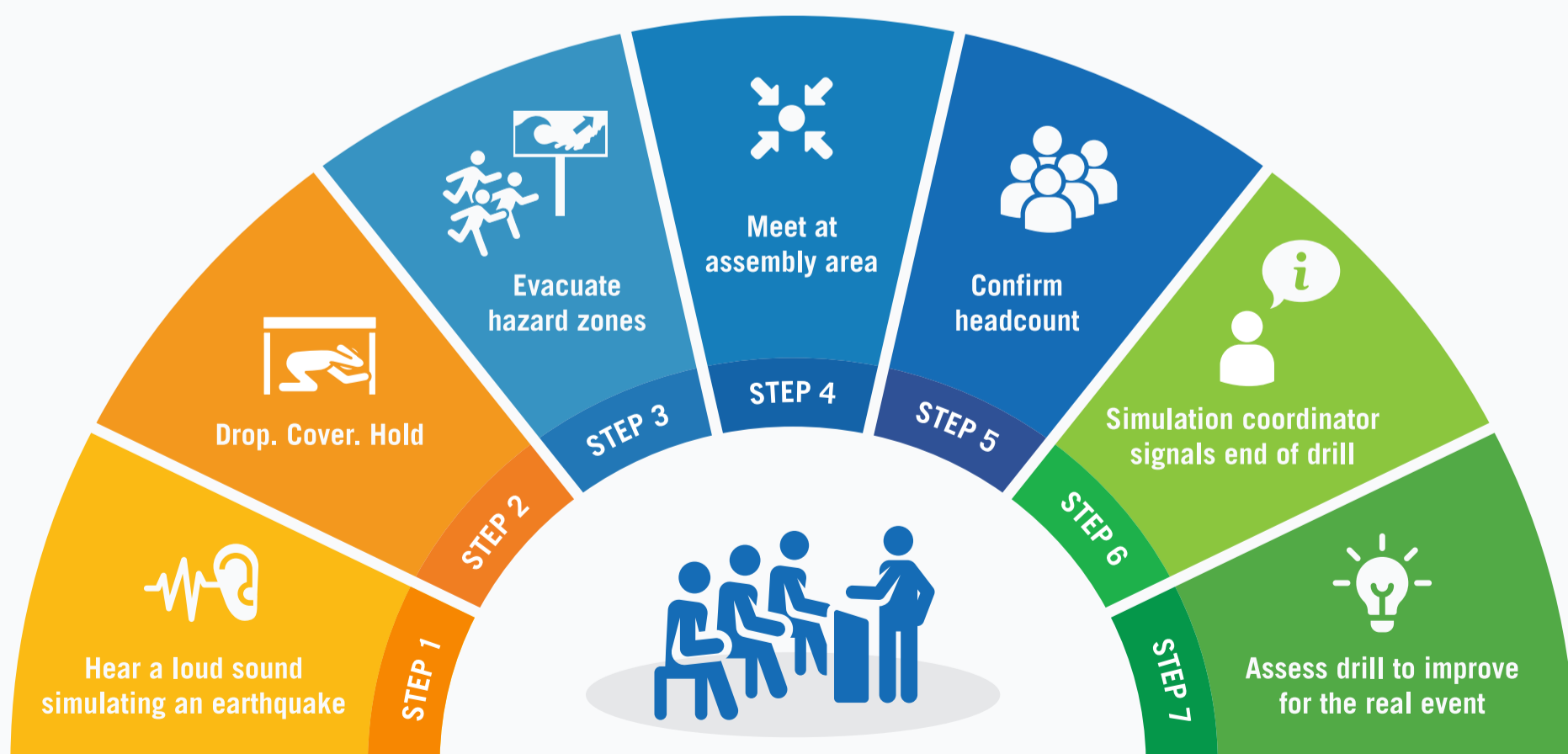
A loud roar, similar to that of a train or airplane

RUN



Leave the coastal area, move to higher ground or inland

TSUNAMI EVACUATION DRILL



Source: COPECO HONDURAS, IOTIC, ITIC, LIPI

