



Section 4

Law Enforcement Officers Killed or Assaulted

Officers Killed in 2001

A goal of law enforcement has traditionally been summed up in the words, "To Protect and Serve". Unfortunately, sometimes law enforcement officers are called upon to lay down their very lives in fulfilling this duty.

Deputy George Turner of the Lafayette County Sheriff's Office gave his life on August 23, 2001. We offer our profound appreciation for the life and service of Deputy Turner, along with our most sincere sympathy to his family, friends and co-workers.

Officers Killed Feloniously

| Year | Officers Killed | Offenses Cleared |
|-------------|-----------------|------------------|
| 1988 | 2 | 2 |
| 1989 | 0 | 0 |
| 1990 | 0 | 0 |
| 1991 | 2 | 2 |
| 1992 | 2 | 2 |
| 1993 | 3 | 3 |
| 1994 | 0 | 0 |
| 1995 | 3 | 3 |
| 1996 | 1 | 1 |
| 1997 | 3 | 3 |
| 1998 | 1 | 1 |
| 1999 | 0 | 0 |
| 2000 | 0 | 0 |
| 2001 | 0 | 0 |

Law Enforcement Officers Assaulted

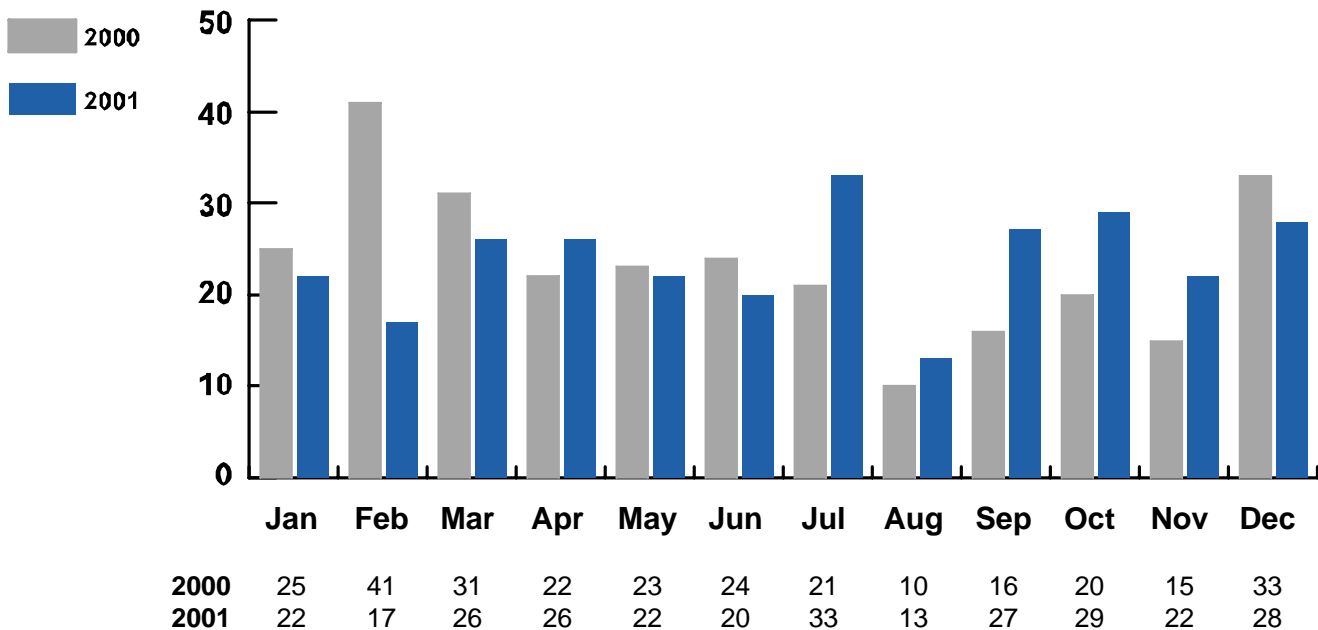
Trend

| Year | Number of Assaults | Percent Change | Number of Clearances | Percent Cleared |
|-------------|--------------------|----------------|----------------------|-----------------|
| 1996 | 313 | -24.8% | 296 | 94.6% |
| 1997 | 299 | -4.5% | 275 | 92.0% |
| 1998 | 294 | -1.7% | 241 | 82.0% |
| 1999 | 257 | -12.6% | 227 | 88.3% |
| 2000 | 281 | 9.3% | 230 | 81.9% |
| 2001 | 285 | 1.4% | 226 | 79.3% |

Injuries to Officers

| Status | Number Assaulted | Percent Distribution |
|--------------|------------------|----------------------|
| Injuries | 116 | 40.7% |
| No Injuries | 169 | 59.3% |
| Total | 285 | 100.0% |

Officers Assaulted by Month 2000 - 2001



Law Enforcement Officers Assaulted

Police Activity at Time of Assault

| Activity Type | Number Assaulted | Percent Distribution |
|---|------------------|----------------------|
| Disturbance Call | 96 | 33.7% |
| Burglary in Progress, Pursuit | 2 | 0.7% |
| Robbery in Progress, Pursuit | 2 | 0.7% |
| Attempting Other Arrests | 53 | 18.6% |
| Civil Disorder | 7 | 2.4% |
| Handling Transporting, Custody of Prisoners | 31 | 10.9% |
| Investigating Suspicious Persons or Circumstances | 11 | 3.9% |
| Ambush - No Warning | 0 | 0.0% |
| Mentally Deranged | 2 | 0.7% |
| Traffic Pursuits and Stops | 52 | 18.2% |
| All Other | 29 | 10.2% |
| Total | 285 | 100.0% |

Assignment of Officers Assaulted

| Activity Type | Number Assaulted | Percent Distribution |
|------------------------------|------------------|----------------------|
| Two-man Vehicle | 40 | 14.0% |
| One-man Vehicle | | |
| Alone | 62 | 21.8% |
| Assisted | 122 | 42.8% |
| Detective/Special Assignment | | |
| Alone | 6 | 2.1% |
| Assisted | 8 | 2.8% |
| Other | | |
| Alone | 16 | 5.6% |
| Assisted | 31 | 10.9% |
| Total | 285 | 100.0% |

Law Enforcement Officers Assaulted

Time of Assault

| Time of Day 0000 - 2400 Hours | Number Assaulted | Percent Distribution |
|----------------------------------|---------------------|-------------------------|
| 0001 - 0200 | 31 | 10.9% |
| 0201 - 0400 | 25 | 8.8% |
| 0401 - 0600 | 12 | 4.2% |
| 0601 - 0800 | 11 | 3.9% |
| 0801 - 1000 | 11 | 3.9% |
| 1001 - 1200 | 17 | 6.0% |
| 1201 - 1400 | 9 | 3.2% |
| 1401 - 1600 | 13 | 4.6% |
| 1600 - 1800 | 31 | 10.9% |
| 1801 - 2000 | 27 | 9.5% |
| 2001 - 2200 | 51 | 17.9% |
| 2201 - 2400 | 47 | 16.5% |
| Total | 285 | 100.0% |

Weapons Used in Assaults Upon Officers

