



## **Section 4**

# **Law Enforcement Officers Killed or Assaulted**

## Officers Killed in 2000

A goal of law enforcement has traditionally been summed up in the words, "To Protect and Serve". Unfortunately, sometimes law enforcement officers are called upon to lay down their very lives in fulfilling this duty.

Captain Tom Craig of the Arkansas State Police gave his life on December 14, 2000, while assisting with a traffic accident. We offer our profound appreciation for the life and service of Captain Craig, along with our most sincere sympathy to his family, friends and co-workers.

### Officers Killed Feloniously

Year	Officers Killed	Offenses Cleared
1988	2	2
1989	0	0
1990	0	0
1991	2	2
1992	2	2
1993	3	3
1994	0	0
1995	3	3
1996	1	1
1997	3	3
1998	1	1
1999	0	0
<b>2000</b>	<b>0</b>	<b>0</b>

## Law Enforcement Officers Assaulted

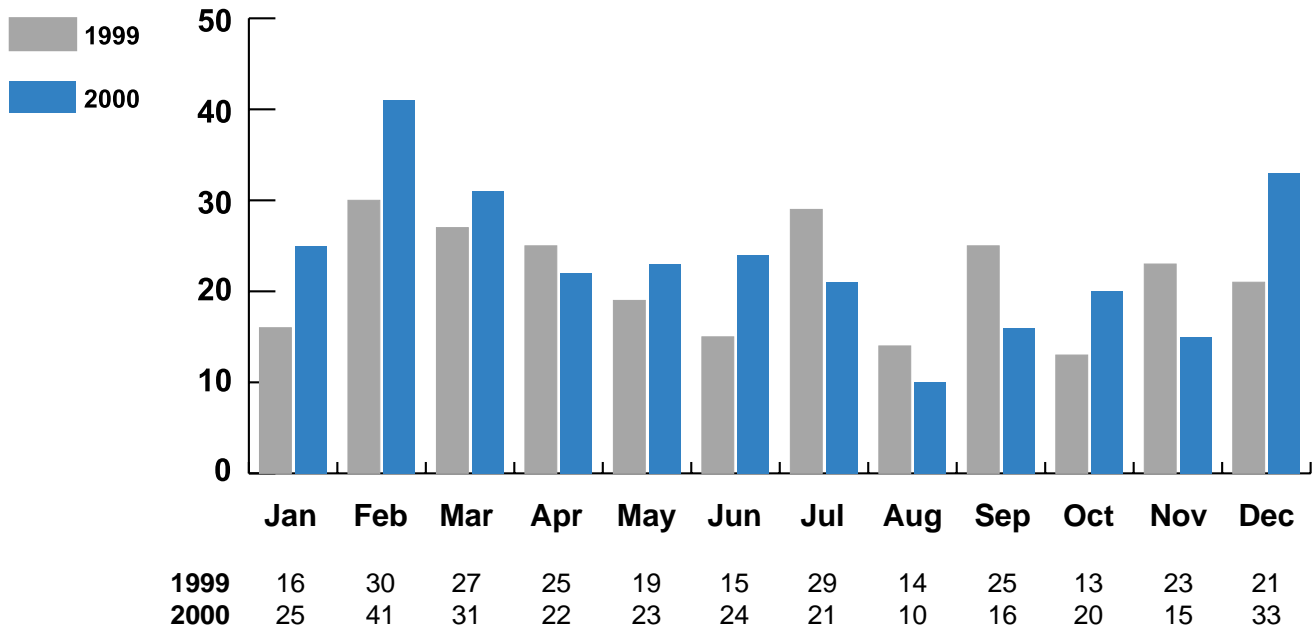
### Trend

Year	Number of Assaults	Percent Change	Number of Clearances	Percent Cleared
1995	416	12.1%	379	91.1%
1996	313	-24.8%	296	94.6%
1997	299	-4.5%	275	92.0%
1998	294	-1.7%	241	82.0%
1999	257	-12.6%	227	88.3%
<b>2000</b>	<b>281</b>	<b>9.3%</b>	<b>230</b>	<b>81.9%</b>

### Injuries to Officers

Status	Number Assaulted	Percent Distribution
Injuries	140	49.8%
No Injuries	141	50.2%
<b>Total</b>	<b>281</b>	<b>100.0%</b>

### Officers Assaulted by Month 1999 - 2000



## Law Enforcement Officers Assaulted

### Police Activity at Time of Assault

Activity Type	Number Assaulted	Percent Distribution
Disturbance Call	72	25.6%
Burglary in Progress, Pursuit	7	2.5%
Robbery in Progress, Pursuit	1	0.3%
Attempting Other Arrests	59	21.0%
Civil Disorder	7	2.5%
Handling Transporting, Custody of Prisoners	25	8.9%
Investigating Suspicious Persons or Circumstances	25	8.9%
Ambush - No Warning	0	0.0%
Mentally Deranged	2	0.7%
Traffic Pursuits and Stops	46	16.4%
All Other	37	13.2%
<b>Total</b>	<b>281</b>	<b>100.0%</b>

### Assignment of Officers Assaulted

Activity Type	Number Assaulted	Percent Distribution
Two-man Vehicle	24	8.5%
One-man Vehicle		
Alone	70	24.9%
Assisted	110	39.2%
Detective/Special Assignment		
Alone	11	3.9%
Assisted	13	4.6%
Other		
Alone	18	6.4%
Assisted	35	12.5%
<b>Total</b>	<b>281</b>	<b>100.0%</b>

## Law Enforcement Officers Assaulted

### Time of Assault

Time of Day 0000 - 2400 Hours	Number Assaulted	Percent Distribution
0001 - 0200	31	11.0%
0201 - 0400	22	7.8%
0401 - 0600	8	2.9%
0601 - 0800	5	1.8%
0801 - 1000	16	5.7%
1001 - 1200	20	7.1%
1201 - 1400	16	5.7%
1401 - 1600	25	8.9%
1600 - 1800	19	6.8%
1801 - 2000	17	6.0%
2001 - 2200	47	16.7%
2201 - 2400	55	19.6%
<b>Total</b>	<b>281</b>	<b>100.0%</b>

### Weapons Used in Assaults Upon Officers

