

# LUXE HOTELS

LUXE HOTELS SPECIAL EDITION 2017



SPECIAL EDITION 2017



THE ART OF **CONCEPT HOTELS**

☆  
attitude  
granville  
瑞生尖沙咀酒店

§  
SORAVIT  
ON GRANVILLE ROAD  
瑞生嘉咸酒店

www.soravithotels.com



☆  
attitude

granville  
瑞生尖沙咀酒店



OLD HONG KONG  
NEW ATTITUDE

20 Granville Road, Tsim Sha Tsui  
(852)2105 3888



# CONTENTS

04 Editor's Message

06 Market Overview



## Hong Kong

- 10 Four Seasons Hotel Hong Kong
- 12 JW Marriott Hotel Hong Kong
- 14 Conrad Hong Kong
- 16 Mandarin Oriental, Hong Kong
- 18 The Landmark Mandarin Oriental, Hong Kong
- 20 Lanson Place Hotel, Hong Kong
- 22 Two MacDonnell Road
- 23 L'hotel Island South
- 24 The Charterhouse Causeway Bay
- 25 Somerset Victoria Park Hong Kong
- 26 Citadines Mercer Hong Kong
- 27 The Stanley Oriental Hotel
- 28 Le Méridien Cyberport

## Kowloon

- 32 W Hong Kong
- 34 The Peninsula Hong Kong
- 35 Gateway Hotel
- 36 Attitude on Granville
- 37 Marco Polo Hongkong Hotel
- 38 The Langham, Hong Kong
- 39 Prince Hotel
- 40 Hotel Pravo Hong Kong
- 41 Soravit on Granville
- 42 Holiday Inn Golden Mile
- 44 Xi Hotel
- 46 Sheraton Hong Kong Hotel & Towers
- 48 The Luxe Manor
- 49 Hullett House

## New Territories

- 52 Hong Kong SkyCity Marriott Hotel
- 54 Harbour Plaza Resort City
- 55 Hyatt Regency Hong Kong, Sha Tin
  
- 58 Directory



"LUXE HOTELS Special Edition 2017" is published by The Standard in February 2017



**Display Advertising Department**

10/F., Sing Tao News Corporation Building  
3 Tung Wong Road  
Shau Kei Wan, Hong Kong

**Advertising Hotline:** (852) 3181 3311

**Fax:** (852) 2758 3579

All rights reserved.

**Features Editor:** Andy Ng

**Reporter:** The Standard Supplement Team

**Design:** The Standard Art Department

**Business Director:** Irene Chan

**Website:** [www.thestandard.com.hk](http://www.thestandard.com.hk)

**Email:** [advertise@thestandard.com.hk](mailto:advertise@thestandard.com.hk)



## Build on our unique attractions

What is it that attracts people to Hong Kong? Ask a hundred visitors, and you will get a hundred different answers.

Topping the list of business motivators must be our stature as a major financial hub of the world, our strategic location in the Asia-Pacific region, and our close connections with the Mainland. One must also be very conscious of the jam-packed calendars of mega-event venues like the Hong Kong Convention and Exhibition Centre, AsiaWorld-Expo and the Coliseum.

In terms of leisure pursuits, it must be hard to resist our world-renowned duty free shopping with quality assurance, and our impeccable Chinese as well as international cuisines. But I do have reservations about the sustainability of interest in theme parks, as more and more of them are cropping up all over the globe. I remember as a kid my fascination with Disneyland in California, but these days there are no less than half a dozen around the world, not to mention a plethora of other similar fun parks.

Whilst going through the Chief Executive's Policy Address, what caught my attention was the reference to such disparate subjects as heritage conservation, harbourfront enhancement and development, and biodiversity. All these issues have very direct bearing to our uniqueness in terms of tourist attractions.

I laud the fact that our magnificent harbour is being increasingly opened up for public enjoyment. But elsewhere in Hong Kong, did you know, for instance, that the challenging MacLehouse Trail is recognized as one of the world's best hikes by TripAdvisor, or that the picturesque geopark in Sai Kung is a UNESCO-listed Global Geopark, rivaling the best in the world?

When it comes to environmental protection, I was pleased to read of the Government's commitment to clean up the air and the water. Air pollutants, for example, have reportedly been reduced by up to about 30% in the past few years. When you see how many major cities of the world are besieged by smog, you will appreciate that this is yet another feather on Hong Kong's cap.

In our efforts to build up Hong Kong's magnetic pull, let's concentrate on attractions that cannot be replicated elsewhere.



Andy Ng  
Features Editor



## UNTAMED LUXURY



Elegantly composed in Hollywood Regency style and complemented by the finest modern amenities and Duxiana mattress, all 38 one-bedroom suites in Hotel Madera Hollywood are dedicated to experiencing the opulence of Hollywood's golden age. The hotel is located in the heart of Central's SoHo district, making it the ideal launch pad for your Hong Kong escapades.

Special offers start from HK\$1,700 nightly or HK\$40,000 monthly. For more details, please contact Sales & Leasing Department at [mhwreservations@maderagroup.com](mailto:mhwreservations@maderagroup.com) or visit [www.maderagroup.com/hollywood](http://www.maderagroup.com/hollywood)



madera  
hollywood

Hotel Madera Hollywood 53-55 Hollywood Road, Central, Hong Kong  
T: +852 3913 2888 | F: +852 3913 2800 | RSVN: +852 3913 2898 | [mhwinfo@maderagroup.com](mailto:mhwinfo@maderagroup.com) | [www.maderagroup.com](http://www.maderagroup.com)





# Down but definitely not out

andy.ng@singtaonewscorp.com

The Hong Kong Tourism Board (HKTB) has just announced the full-year arrival figures for 2016. The 56.65 million visitors represent a decline of 4.5% compared to 2015. While there was a drop in arrivals from the Mainland, the number of visitors from international markets increased.

Dr Peter Lam, Chairman of HKTB, said: "In 2016, arrivals from the Mainland decreased by 6.7% due to implementation of the 'one visit per week' policy. However, both long-haul and short-haul markets performed well, resulting in an increase of 3.1% in total international arrivals. Overnight international arrivals showed better growth at 5.7%".

In recent years, the HKTB has stepped up its promotions in short-haul markets and focused on drawing more overnight visitors. In 2016, overnight arrivals amounted to approximately 26.55 million,

with short-haul markets showing remarkable growth of 8.4%. Overnight arrivals from South Korea, the Philippines and Thailand hit a record high in 2016. These markets, together with Indonesia, saw significant double-digit growth. As for long-haul markets, overnight arrivals grew by 2.8% year on year.

Meanwhile, Mr. C. Y. Leung, Chief Executive, reiterated in his 2017 Policy Address the government's commitment of support to the tourism industry.

He pointed out a consultancy study has found that by 2028 there will be a shortfall of about 130,000 square metres of convention and exhibition venues in Hong Kong at peak periods. In this context, the Government is looking to the Wan Chai Sports Ground for a comprehensive re-development that comprises convention and exhibition venues amongst other facilities.



"We must have well-conceived medium and long-term extension planning and ensure that shortage of venues will not pose constraints to our convention and exhibition business," he emphasized.

Hong Kong has, he added, continued to enhance its diversified and high value-added travelling experiences, as well as its gourmet culture and cultural and creative tourism. He cited a number of mega events that have delivered results, including the Formula E motor race and the large-scale Hong Kong Wine and Dine Festival.

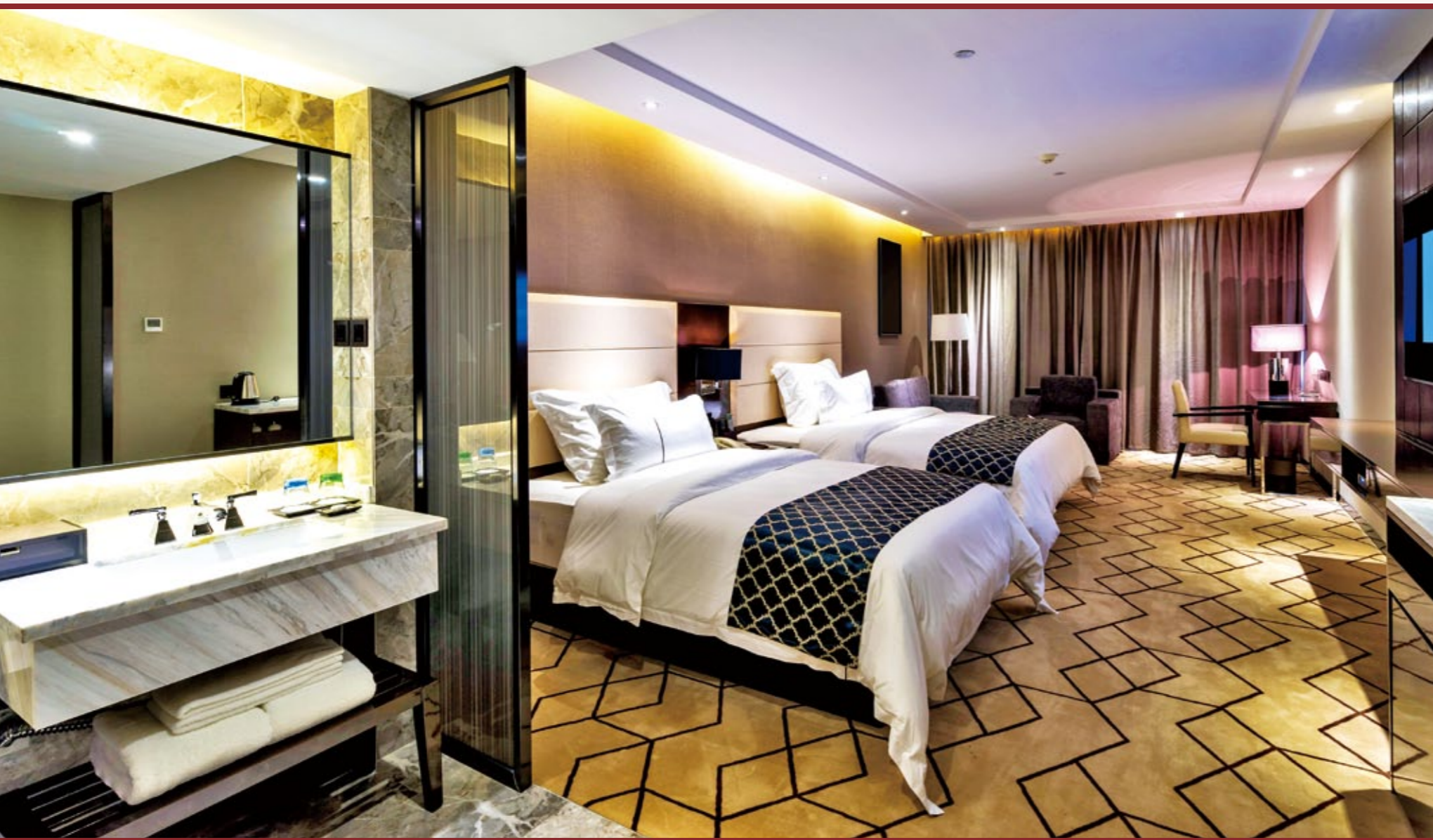
To celebrate the 20th anniversary of Hong Kong's return to the Motherland, Leung revealed that the Government and HKTB will hold a number of mega events, including summits, heritage exhibitions, large-scale sports events and light shows, to attract more high-yield overnight visitors.

On the performance of the Kai Tak Cruise Terminal, he said the number of ship calls grew by 70% year-on-year in 2016. This year the Government will invite a tender for the Kai Tak Tourism Node in the vicinity of the cruise terminal to develop a world-class tourist attraction.

In spite of the temporary setback, there is every reason for optimism in the tourism industry.







HONG KONG  
LUXE HOTELS





## FOUR SEASONS HOTEL HONG KONG

Exemplifying luxury living

*Majestically standing on the waterfront overlooking Victoria Harbour and the CBD financial district, Four Seasons Hotel Hong Kong sets the bar for luxury and excellence in the city.*



### Accommodation and Facilities

Four Seasons Hotel Hong Kong features 399 guest rooms, including 54 suites, reflecting the comfort and luxury for which the brand is renowned. The Spa is situated on the fifth and sixth floors of the hotel spanning over 2,044 square meters with 17 treatment rooms. Further amenities include a choice of pools on the sixth floor, and a harbor-facing fitness center with state-of-the-art equipment.

### Location and Accessibility

Centrally located at the heart of Hong Kong Island next to the prestigious International Finance Centre, the hotel is accessible to the city's key business centers via the extensive transportation network, while the iconic Star Ferry linking Kowloon and Central is just a short 10-minute harbor-side walk away.

### Caprice

A taste of France in the heart of Hong Kong, Michelin two-star Caprice offers the finest French wines as well as other European and New World wines from renowned vineyards, and boasts Hong Kong's first cheese cellar, which houses a vast selection of artisanal French cheeses sourced straight from the most passionate affineurs. Take in superb views from this sixth-floor restaurant featuring panoramic harbor views, stunning interiors and Chinese-inspired Czech Crystal Chandelier. It includes one private dining room with seating for up to 12 guests.

### Caprice Bar

A stylish and discreet bar, adjacent to the acclaimed Caprice, Caprice Bar offers an exclusive and intimate environment to enjoy a selection of interesting and unusual wines and champagne by the glass or an evening of cheese and wine. With the accent firmly on France, a seasonal food menu displays the Comptoir Bar and the Cheese Bar, from which guests can choose a selection of savoury snacks or cheese respectively. Presenting a new lunchtime menu, those who love food can now enjoy a selection of classic French bistro fare in the chic setting of Caprice Bar accompanied by relaxed, attentive service.

### Lung King Heen

The first Chinese restaurant ever to receive three Michelin stars, Lung King Heen, meaning 'view of the dragon', commands sweeping views of Victoria Harbour. The restaurant offers authentic Cantonese cuisine with an emphasis on seafood and a daily dim sum lunch selection. A private dining room seating up to 14 guests is the perfect setting for business entertainment or intimate family celebrations.

### The Lounge

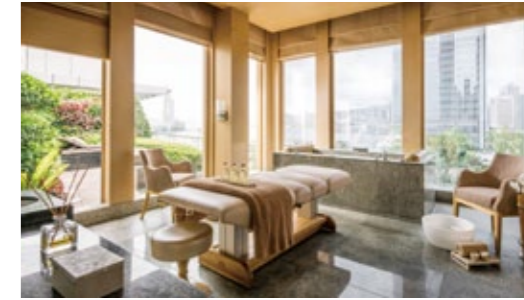
Adjacent to the lobby, it is the ideal rendezvous for business meetings or social chit-chats, serving breakfast, lunch, afternoon tea and dinner, not to mention evening drinks. Light musical entertainment is featured from 12 pm to 11:30 pm.

### Blue Bar

Spend quality relaxing time here with its ultra chic and stylish surroundings for breakfast, lunch and a great wine selection including delectable martinis.

### Pool Terrace

Accessible only to in-house guests, the open-air poolside terrace provides light cuisine and refreshments.



Address: 8 Finance Street, Central, Hong Kong Total no. of rooms: 399 Room size: 484 – 3,430 sq. ft.  
Price range (published rates): HK\$4,550 – \$78,000 Tel: (852) 3196 8888 Fax: (852) 3196 8899  
Website: [www.fourseasons.com/hongkong](http://www.fourseasons.com/hongkong) Email: [Reservations.hkg@fourseasons.com](mailto:Reservations.hkg@fourseasons.com)





JW MARRIOTT.  
HONG KONG

## JW MARRIOTT HOTEL HONG KONG

Exemplar of class and elegance

*Set strategically in the renowned Pacific Place complex, the multi-award-winning JW Marriott Hotel Hong Kong offers unprecedented convenience complemented by a range of world class facilities and services, satisfying every comfort of the ever discerning traveler.*



### **Accommodation and Facilities**

The hotel boasts panoramic views of the harbor, mountain or city in each of the well-appointed guestrooms and suites. With 577 spacious guestrooms and 25 luxurious suites, each unit features comprehensive home entertainment, including a 42" LCD television, DVD player, multi-plug connectivity hub, cutting-edge BOSE audio systems and mini-bar equipped with coffee and tea making facilities. For a bit of pampering, the JW Suites, with separate living area and bedroom, come with king-sized bed and signature JW bed linen, pillows and mattress.

Guests staying in the Executive Rooms and Suites can enjoy access to the duplex Executive Lounge located on Level 33 and 34, with additional entitlements like breakfast, afternoon tea, evening cocktails and hors d'oeuvres.

For recreational pursuits, guests can make full use of comprehensive facilities such as 24-hour fitness center, outdoor swimming pool, whirlpool Jacuzzi, massage treatment rooms along with complimentary internet connectivity in all guestrooms and hotel public areas.

### **Location and Accessibility**

Occupying a premium address next to the famed Pacific Place, one of the best shopping malls in the city, the 5-star hotel places residents right in the heart of the commercial hub Admiralty and in close proximity to a host of world-class attractions. With the direct-connected MTR station in a mere 2-minute stroll away, guests are well connected to different parts of the metropolis.

### **MICE Facilities**

Equipped with 15 function rooms, the hotel offers the largest hotel ballroom on Hong Kong Island, which can accommodate up to 1,000 guests in theatre-style, complemented by top-notch technology infrastructure, providing a multitude of special lighting effects, and a high-definition LED wall backdrop to assist in organizing innovative themed events and exquisite banquets.

### **F&B Outlets**

The hotel features 8 refined restaurants with a variety of authentic international cuisines. Guests can enjoy The Lounge which overlooks the spectacular Victoria harbour, or indulge in a hearty feast in JW Café, Flint Grill & Bar or the Chinese restaurant, Man Ho.



Address: Pacific Place, 88 Queensway, Hong Kong Total no. of rooms: 602 Room size: 348 – 1,803 sq. ft.

Tel: (852) 2810 8366 Fax: (852) 2845 0737

Website: [jwmarriothongkong.com](http://jwmarriothongkong.com) Email: [jwmarriott.hk@marriott.com](mailto:jwmarriott.hk@marriott.com)



CONRAD<sup>®</sup>  
HONG KONG

## CONRAD HONG KONG

Stay inspired

*Located in the heart of the city's business district, Conrad Hong Kong fuses traditional Chinese culture with modern Chinese design.*



### Accommodation and Facilities

The hotel has 467 guestrooms and 45 suites, which command panoramic views stretching from The Peak to the Victoria Harbour and beyond. All guestrooms and suites are equipped with a Nespresso machine and other deluxe facilities.

The hotel also features extensive meeting and leisure facilities, award-winning restaurants, a 24-hour Health Club, Jacuzzi and heated outdoor swimming pool with views of Hong Kong's skyline.

### Location and Accessibility

Conveniently located in the central business district, Conrad Hong Kong towers 61 floors above Pacific Place—one of the city's most prestigious shopping and entertainment complexes. The hotel is also in close proximity to major business locations and tourist attractions, such as the Hong Kong Convention and Exhibition Centre, Macau Ferry Pier, Victoria Harbour and Victoria Peak. The Admiralty MTR, which connects the South Line and leads to Ocean Park Hong Kong in 4 minutes, station is just a stone's throw away.

### Golden Leaf

Golden Leaf is a must-visit destination for fans of Cantonese cuisine with a passion for detail at its very core. The timeless design boasts traditional Chinese-style carved teakwood and rosewood furniture and antique art pieces, creating an elegant and graceful ambience. An extensive a la carte menu featuring authentic Cantonese favorites is available during lunch and dinner while a sumptuous Dim Sum Breakfast is available on weekends and public holidays.

### Garden Café Terrace

An alfresco venue with a capacity for up to 100 guests, the Garden Café Terrace is adorned by a view of soaring skyscrapers, making it a fantastic backdrop for social or business cocktail parties accompanied by signature beverages and grilled delicacies. A wide range of whisky, cigar, signature cocktails and grilled dishes are available.



Address: Pacific Place, 88 Queensway, Hong Kong Total no. of rooms: 512 Room size: 450 – 2,511 sq. ft.  
Price range (published rates): HK\$5,300 – \$41,300 Tel: (852) 2521 3838 Fax: (852) 2521 3888  
Website: [www.conradhotels.com/hongkong](http://www.conradhotels.com/hongkong) Email: [hongkonginfo@conradhotels.com](mailto:hongkonginfo@conradhotels.com)





## MANDARIN ORIENTAL, HONG KONG

Gem in the heart of the city

*Located in Central with views of Victoria Harbour and the city's iconic skyline, Mandarin Oriental, Hong Kong offers luxurious accommodation and comprehensive facilities.*



### **Accommodation and Facilities**

The hotel's 434 rooms and 67 individually-designed suites are some of the most spacious in Hong Kong. The guest rooms are also equipped with in-room entertainment systems, SMART lighting controls and high-speed Wi-Fi internet access.

Mandarin Oriental, Hong Kong is home to 10 outstanding restaurant and bars, including three with Michelin stars; an award-winning spa; an indoor pool; and a 24-hour fitness centre with state-of-the-art Technogym equipment.

### **Location and Accessibility**

Located in the Central district, the hotel is a short walk from some of the city's finest food, shopping, entertainment and historical areas. Mandarin Oriental, Hong Kong is well connected to every part of the city by public transport, with the Central MTR station and the Hong Kong station of Airport Express just minutes away.

### **Legendary Dining**

Diners are spoiled for choice as there are three restaurants with Michelin Stars amongst the 10 highly individual restaurants and bars. These are legendary chef Pierre Gagnaire's two-Michelin-starred restaurant Pierre serving modern French cuisine, the Michelin-starred Mandarin Grill + Bar, which serves exciting adaptations of grill specialties, and Michelin-starred Man Wah, where guests can experience outstanding local Cantonese dishes.

### **The Mandarin Spa**

Honouring the hotel's Chinese heritage design, the award-winning Mandarin Spa offers a series of luxurious treatments and packages that are inspired by Traditional Chinese Medicine and modern techniques from around the world. Set over three floors and covering 2,100 square metres, The Mandarin Spa is also home to The Mandarin Salon and The Mandarin Barber, each offering the ultimate in female and male grooming.







## THE LANDMARK MANDARIN ORIENTAL, HONG KONG

exemplifying opulence

*Located right in the heart of Central, The Landmark Mandarin Oriental, Hong Kong sets the standard for personal service and stylish sophistication. Redesigned by award-winning designer Joyce Wang, all of the spacious guestrooms provide a cocoon-like residential experience.*



### Accommodation and Facilities

The hotel's 109 guestrooms and suites have been given a fresh and contemporary makeover by the award-winning Hong Kong designer, Joyce Wang. Each room is complemented by bespoke furniture and lighting options to create a sense of cocooning and relaxation. A calming palette and luxurious fabrics have been used throughout, while the signature bathrooms with deep soaking tubs and power showers have a sleek light-filled feel. Providing the best in-room entertainment in the city, the rooms are equipped with personalised TV streaming on new 48-inch and 55-inch TV screens respectively, together with BOSE speakers to offer an excellent audio-visual experience.

### Location & Accessibility

With unrivaled convenience for business appointments, The Landmark Mandarin Oriental, Hong Kong is only minutes away from top-tier office buildings, hundreds of luxury brand shops, and fine restaurants, while nightlife and entertainment are also within walking distance. Guests enjoy air-conditioned comfort as the hotel is linked by a bridge network to all other major buildings in Central, as well as to the Central MTR station and the Airport Express station.

### Amber

Culinary Director Richard Ekkebus' contemporary interpretation of French cuisine has earned the hotel's Amber Restaurant numerous awards, including two Michelin stars for nine consecutive years, and one of the World's 50 Best Restaurants. Using only the finest ingredients, Ekkebus applies his classical training and creative talents to create dishes to excite even the most jaded palate.

### MO Bar

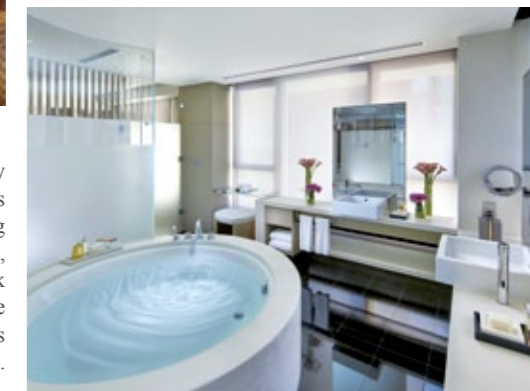
Renowned for its stylish afternoon tea and bringing international personalities and new concepts such as its Unplugged concerts, the bar hosts an annual Masters of Mixology event featuring some of the world's best mixologists.

### The Oriental Spa

The Oriental Spa offers two floors of sensory indulgence in a 25,000 sq.ft. complex including the heat and water facilities. Comprising 15 treatment rooms, the Spa offers different styles of spas and massages.

### Impeccable service

As winner of Forbes Travel Guide Triple Five-Star awards for hotel, spa and restaurant, The Landmark Mandarin Oriental, Hong Kong is one of only nine hotels in the world to receive this prestigious recognition based on up to 800 objective criteria, with an emphasis on service.







## LANSON PLACE HOTEL, HONG KONG

A relaxing home away from home

*Located in vibrant Causeway Bay, this award-winning hotel meets the needs of travelers with its convenient access and attention to detail.*



### **Accommodation and Facilities**

Lanson Place Hotel, Hong Kong offers 194 rooms and suites, ranging from 380 to 1,900 sq. ft., with chic contemporary interiors, generous kitchen area and clever design innovations.

An urban retreat, the stylish hotel is tucked discreetly in a quiet street just a stroll away from up-market shopping malls like Times Square and Hysan Place. The first sight that impresses you as you pull up to the hotel is its classic European façade.

The hotel is a member of 'Small Luxury Hotels of the World™', and has been designed with modernism and comfort in mind. The rooms come in warm, neutral palettes, together with full-length windows to let in natural light.

Premium in-room facilities include IPTV with international channels, a complimentary handy smartphone providing free local and international calls to selected countries and unlimited 3G internet access.

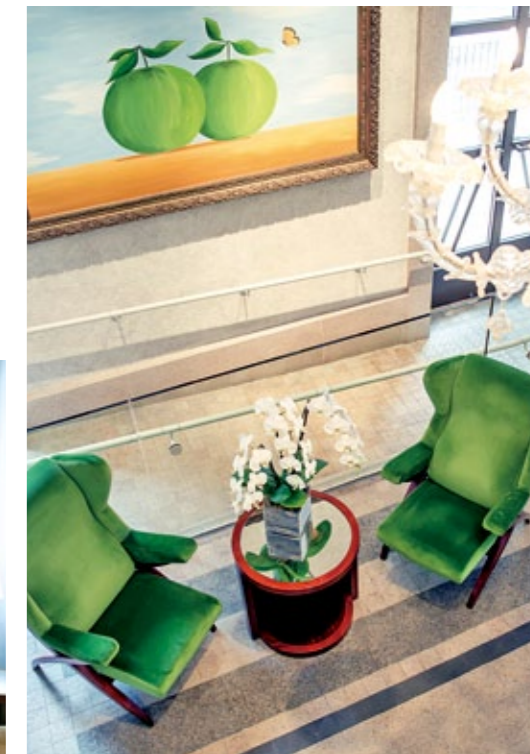
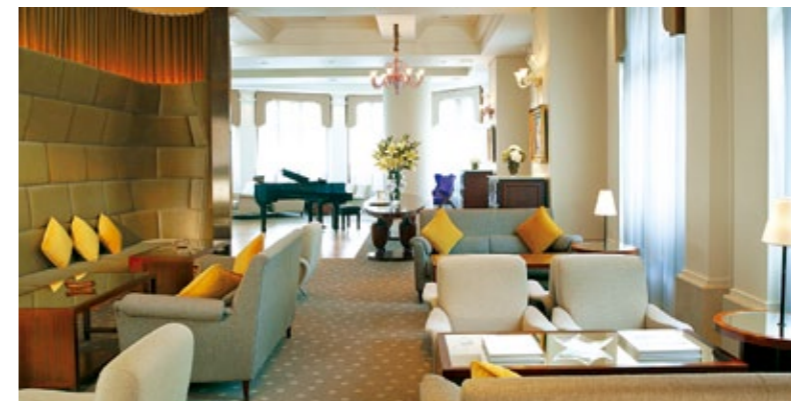
Facilities in the hotel include business centre, meeting rooms, launderette, 24-hour fully equipped gym and a library exclusive for guests. Guests can also relax at the 133 Lounge which serves buffet breakfast, evening drinks and canapés every day. 24-hour Concierge is available at their convenience.

For guests that have the need to travel around the city, the hotel provides free scheduled shuttle bus service to Central and Quarry Bay, as well as limousine or shuttle bus service to and from the airport.

### **Location and Accessibility**

Lanson Place Hotel is located in the heart of Causeway Bay, one of Hong Kong's most famous business and entertainment districts. Guests can explore the area all-day long, from large shopping complexes to quaint boutiques.

Within walking distance, there is a whole colony of cinemas, bars and restaurants serving international cuisines. The hotel is within five minutes' walk from Causeway Bay MTR station for convenient access to other parts of the town.





## TWO MACDONNELL ROAD

### Haven in the Mid-Levels

Conveniently set in a tranquil residential neighbourhood on the city's prestigious Mid-levels, Central, accommodation at Two MacDonnell Road boasts a blending of green tropical views with Hong Kong's magnificent skyline.



#### Accommodation and Facilities

Two MacDonnell Road offers 213 well-appointed rooms, ranging from studios to one- and two-bedroom apartments from 336 to 750 sq ft in size. Each features a kitchenette and soothing views of lush greenery, together with a few extra and distinguished touches.

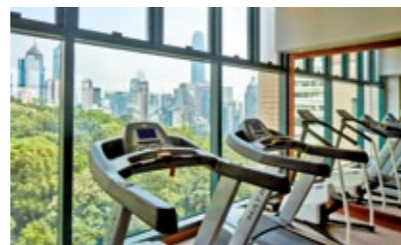
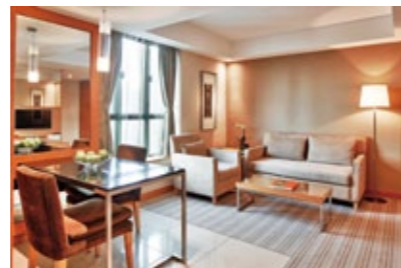
Facilities in the hotel include a business centre, fully-equipped gymnasium and Café on 8 which serves lunch buffet, a la carte menu and weekend afternoon tea.

The property provides shuttle bus service to Central and Admiralty for business travellers as well as pleasure seekers.

#### Location and Accessibility

Two MacDonnell Road is located in a salubrious residential area next to Hong

Kong Park and Hong Kong Botanical Gardens. It is in close proximity to Central's key financial district and the popular entertainment hub, Lan Kwai Fong. Two MacDonnell Road is 45 minutes from/to Hong Kong International Airport.



## L'HOTEL ISLAND SOUTH

### Modern living in touch with nature

The contemporary hotel tucked away in the Southern District combines state-of-the-art facilities with natural surroundings.



#### Accommodation and Facilities

L'hotel Island South consists of 432 guestrooms, including 17 modern suites blessed with seascapes, hillside vistas or city views. Each guestroom caters to individual needs with a selection of pillows for a king sized bed or twin beds.

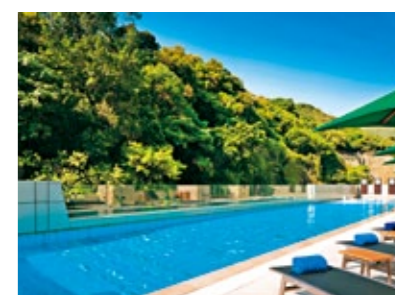
The gym under a five-meter glass ceiling overlooks the outdoor swimming pool, which is divided into adults' and kids' sections on two ends against a verdant backdrop. Designed for intimate and exclusive gatherings, the LIS Lounge is equipped with complimentary coffee and a

40-foot long redwood table from Cameroon.

Guests can be connected seamlessly with Hotel through its mobile app while the eKiosk in lobby is helpful with information of local attractions. Other services include 24-hour medical assistance, in-room dining and car hire.

#### Location and Accessibility

The Hotel is only 5-minute walk from MTR Wong Chuk Hang Station (Exit A1 or B) and it only takes 2 minutes by MTR to nip over to Ocean Park and 6 minutes to reach Admiralty Station to transfer to Causeway Bay or Kowloon District.





# THE CHARTERHOUSE CAUSEWAY BAY

feeling the pulse of the metropolis

Situated in the heart of Causeway Bay, The Charterhouse Causeway Bay boasts a coveted address with a plethora of shopping and dining options at the doorsteps.



THE CHARTERHOUSE  
CAUSEWAY BAY HONG KONG  
銅鑼灣利景酒店



S Signature Floor

## Accommodation and Facilities

The 294 well-appointed hotel rooms and suites are tastefully decorated in pastel colors, with opulent wood and brass accents carrying through the hotel's neo-classical feel. Offering home-like comforts, all the rooms are well-equipped with adjustable air-conditioning, entertainment including satellite TV and Now TV channels, safe, coffee and tea making facilities and hair-dryer. The hotel also provides free WiFi and handy android phones for free local calls & IDD services, so that travelers are in touch with their loved ones. After a session at the 24-hour fitness centre, you will find sumptuous local and foreign delicacies at the hotel's four F&B outlets, including Gazebo Restaurant, Harry's Lounge and Bar, Le Petit Salon, and Champs Restaurant and Bar / The Secret Gallery.

Living in The Charterhouse Causeway

Bay is a hassle-free experience as the hotel anticipates and takes care of travelers' needs. In addition to laundry, mail, information and currencies exchange services, medical assistance and babysitting service are also available. The hotel can also arrange tours, airport transportation and free shuttle bus services to some tourist spots for you.

## Location and Accessibility

Ideally located in the most vibrant district in Hong Kong, The Charterhouse Causeway Bay is in the vicinity of historical sites, stylish boutiques, mega-sized shopping malls, and fine restaurants. The popular Times Square, as well as the Hong Kong Convention and Exhibition Centre are both within walking distance, while the Causeway Bay MTR station nearby provides easy connections to other parts of Hong Kong.



# SOMERSET VICTORIA PARK HONG KONG

In the hub of metropolitan Hong Kong

Somerset Victoria Park Hong Kong sits along the city's bustling commercial and retail district of Causeway Bay, with its popular shopping malls and the lush greenery of Victoria Park.



SOMERSET

VICTORIA PARK  
HONG KONG



## Accommodation and Facilities

Comprising 68 cosy studio and one-bedroom serviced apartments, Somerset Victoria Park Hong Kong suits the lifestyles of business and leisure travelers. With contemporary furnishing, and high-speed wireless internet, each apartment offers a seamless blend of comfort and convenience.

At the end of a long day in the bustling city, retire to Somerset Victoria Park Hong Kong to rejuvenate yourself. The residence offers travel-savvy guests comfortable rooms that come in various sizes, ranging from cleverly designed studios to spacious 1-bedroom apartments. Each of these 1-bedroom apartments is fitted with a kitchenette, separate living and dining areas, and an en-suite bathroom. Other facilities include a full-serviced gymnasium, launderette and a Resident's Lounge.

## Location and Accessibility

Somerset Victoria Park Hong Kong is at the vicinity of Hong Kong Stadium,

where international sporting events such as the annual Rugby Sevens are held. If being a spectator is not enough to pump up your adrenaline, test your physical limits on some challenging but rewarding hiking trails around the hotel, such as Twin Peaks and Dragons Back, with the latter being voted as the No. 1 Urban Walk in the World.

A mere 5-minute stroll from the Tin Hau MTR Station and a 15-minute drive to Hong Kong-Macau Ferry Terminal, the property enjoys easy connectivity.



Address: 209-219 Wanchai Road, Hong Kong Total no. of rooms: 294 Room size: 140-300 sq. ft.  
Price range (published rates): HK\$2,400-\$4,800 Tel: (852) 2591 0000 Fax: (852) 2833 5888  
Website: www.charterhouse.com Email: info@charterhouse.com



Address: No.118 Electric Road, Causeway Bay Total no. of rooms: 68 Room size: 183-356 sq. ft.  
Price range (published rates): HK\$700-\$3,000 Tel: (852) 3653 8088 Email: enquiry.hongkong@the-ascott.com  
Website: www.somerset.com/china/hong-kong/somerset-victoria-park-hong-kong





# CITADINES MERCER HONG KONG

## Ideal location in the CBD

Situated in a rejuvenated district bursting with historical charms and heritage flavors, Citadines Mercer Hong Kong sits cheek-to-jowl with the CBD with prominent business landmarks such as IFC, and Exchange Square.



### Accommodation and Facilities

Citadines Mercer Hong Kong offers 55 apartments and comes with a fully-equipped gymnasium, an outdoor swimming pool and the Breeze Lounge. Each apartment is decked with modern, contemporary furnishing, providing the perfect living space to relax in the comfort of your home away from home.

Citadines Mercer Hong Kong is one of a vibrant collection of The Ascott Limited's serviced residences in over 100 cities in the Americas, Asia Pacific, Europe and the Middle East. A member of Capitaland, it is the global leader in branded serviced residences, bringing you more than 30 years' experience in supporting travellers who work and live away from home.

### Location and Accessibility

The hotel enjoys unrivaled convenience with the Sheung Wan MTR station at its doorstep, providing easy access to shopping and entertainment hotspots throughout the city, as well as easy connection to the Airport Express.

The nearby Hong Kong-Macau Ferry Terminal also facilitates a speedy trip to the gaming capital of the world.

Well-known as a cultural city and a financial hub, Hong Kong is also a culinary heaven, with many Michelin-starred restaurants located around the property. Citadines Mercer itself features a Michelin 3-star Japanese restaurant – Sushi Shikon. After dinner, guests can also enjoy a slice of the nightlife entertainment scene at Lan Kwai Fong and SoHo, which are just an 8-minute walk away.



# THE STANLEY ORIENTAL HOTEL

## Seaside resort living

The Stanley Oriental Hotel is a sought-after residence nestled in the coveted south side of Hong Kong Island. Residents can feel the soothing sea breeze the moment they step out onto their private wrap-around balconies which front the ocean.



### Accommodation and Facilities

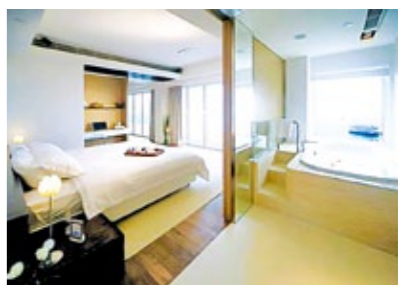
The hotel features a contemporary design with elegant bedrooms and modern bathrooms designed with customers' comfort in mind. To relax and unwind, just set yourself down on the king-size bed and cozy furniture.

Each perfectly-designed studio or one-bedroom suite comes with a host of luxury facilities. Whether for a weekend getaway or for a longer stay, the Stanley Oriental Hotel is fully equipped with modcons. Make sure you make the most of the seaside setting and indulge in the al fresco lifestyle with the rooftop Jacuzzi and BBQ facilities.

### Location and Accessibility

A mere 25-minute drive from Hong Kong's CBD, the hotel enjoys an uninterrupted sweeping view of the

picturesque Stanley Bay, taking in such points of interest as the colorful Stanley Market, the historical Murray House, the sleek Stanley Plaza, and the age-old Tin Hau Temple. There is a host of stylish bars, restaurants, shops and supermarkets, all in the vicinity.





# Le MERIDIEN

## CYBERPORT

數碼港艾美酒店

## LE MÉRIDIEN CYBERPORT

A haven of peace and serenity

*Chic and pulsating with an urban cool, the modish Le Méridien Cyberport at Hong Kong Island's Southside is a stylish hotel equipped with cutting-edge technology and upscale amenities.*



### Accommodation and Facilities

The hotel's 170 guest rooms, which include 3 suites, 15 smart pure rooms and a pure floor, come with a contemporary decor. Guests are spoiled with a wide choice of leisure amenities: After breaking a sweat at the fully-equipped Go Gym, they can enjoy pampering at the Spa @ Sense of Touch Retreat, or a warm sunbath and swim at the outdoor pool. For those planning wedding or business events, the 17 high-ceilinged function rooms meet varying needs.

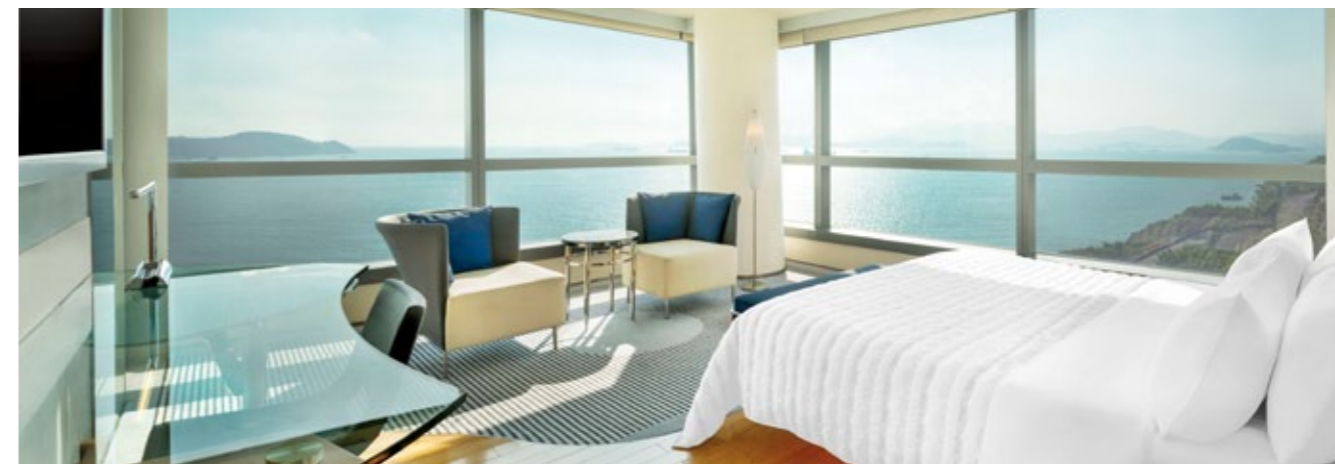
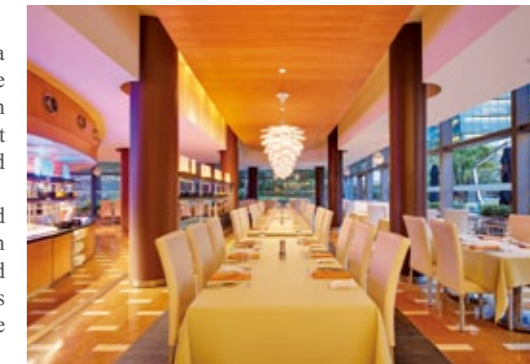
To keep travelers in touch with their families and business partners, free and unlimited WiFi is available within the hotel area, while each room is equipped with a handy phone providing unlimited 3G data, local calls and IDD calls to 5 selected countries, including China, Singapore, South Korea, the UK and the US. Business travelers can also make use of the virtual business centre to hold conferences. Concierge service, shuttle bus, valet parking and laundry services are available on request.

### Location & Accessibility

Nestled against a backdrop of greenery while overlooking the South China Sea, the hotel offers a serene and peaceful environment right next to Cyberport, where start-ups and technology-intensive firms congregate. It is only 30 minutes by hotel shuttle to the MTR Hong Kong Station for easy connection to the Hong Kong International Airport. The bicycle trail nearby and the waterfront promenade are perfect for unwinding and watching the glorious sunset.

### Indulge in gourmet

With five stylish bars and restaurants, Le Méridien Cyberport spoils its guests with plenty of choices. Guests can feast on western cuisine at the modern-chic restaurant Prompt, enjoy top-class Cantonese fare at Nam Fong, or savor the freshest seafood delicacies at Restaurant & Bar Umami. The hotel also regularly organizes special not-to-be-missed wine-pairing dinners.



Address: 100 Cyberport Road, Hong Kong Total no. of rooms: 170 Room size: 350 – 945 sq. ft.  
Tel: (852) 2980 7788 Fax: (852) 2980 7888  
Website: lemeridien.com/HongKong Email: welcome.lmc@lemeridien.com





—◆—  
**KOWLOON**  
LUXE HOTELS  
—◆—





HONG KONG

## W HONG KONG

Giving you the energy to look good,  
feel good and stay fabulous.

*The epitome of urban chic, W Hong Kong is the place to get connected  
with the most exciting happenings in design, fashion, music and fuel.*



### Accommodation and Facilities

Designed by Yasumichi Morita of Japan's GLAMOROUS and Nic Graham of g+a in Australia, the 393-room hotel is designed like an enchanted forest that resonates with the energy and vibrancy of the city. W Hong Kong always partners with the hottest fashion and lifestyle brands of the moment to create exciting room packages to make your stay that more special.

W Hong Kong also offers a wide range of facilities to keep you looking and feeling fabulous. Get pampered at the award-winning bliss spa and experience ultimate relaxation at their Jacuzzi, sauna, steam rooms and harbor view vitality pool facilities. Be sure to wander up to the 76th floor and take a dip at their iconic rooftop infinity WET pool—heated all year round. If you're visiting in the summer, check out their legendary pool party series – one of the city's most highly anticipated events of the summer.

### Location and Accessibility

On the doorstep of W Hong Kong is upscale shopping mall Elements where a tantalizing variety of restaurants and boutiques can be found. A 10-minute ride on the hotel's free shuttle bus will bring guests to Canton Road, the famous shopping avenue at the heart of Tsim Sha Tsui and moments away from Hong Kong's iconic markets.

Conveniently located atop the Kowloon MTR station, the hotel enjoys high accessibility. It is only 20 minutes from the airport via Airport Express and five minutes to Central. You can even check in at the Airport Express desk at the MTR station.

### FIT Membership and Gym

Work up an appetite at the 24/7 FIT gym on the 73rd floor. It's fully-equipped with everything you might need – including great views – so you can sweat out anything that's weighing you down and leave feeling ready to take on the day's adventures. Group fitness classes as well as personal trainers are also available upon request.

They also offer a fabulous gym membership, which includes exclusive discounts at their various F&B outlets, complimentary spa treatments each month, access to the hotel's WET pool and Jacuzzi and five personal training sessions.

### KITCHEN

Fuel your body at KITCHEN with a fresh and seasonal buffet of international and pan-Asian dishes for breakfast, lunch, dinner and brunch. With one of the most enviable seafood offerings in town, KITCHEN's quirky décor and open kitchen offers a one-of-a-kind dining experience. The bubbly seafood Sunday brunch is a definite winner here with not only free-flow champagne but also DIY Bloody Marys, sangria, steaks cooked à la minute and much more.

### W Happenings

There's always a party, fashion show or a heart-pumping fitness extravaganza happening at W Hong Kong. The epicenter for what's new and next, W Hong Kong is the place to let loose, be the life of the party and find inspiration.



Address: 1 Austin Road West, Kowloon Station, Kowloon Total no. of rooms: 393 Room size: 430–2,152 sq. ft.  
Price range (published rates): HK\$2,700 – \$68,000 Tel: (852) 3717 2222 Fax: (852) 3717 2888  
Website: [www.w-hongkong.com](http://www.w-hongkong.com) Email: [w.hk@whotels.com](mailto:w.hk@whotels.com)





# THE PENINSULA HONG KONG

## The living legend

The Peninsula Hong Kong, opened in 1928, is both an internationally renowned five-star hotel and an integral part of the local community. Turning 89 years old this year, the living legend remains as grand and glamorous as ever and continues to serve their generations of customers with grace and elegance.

THE PENINSULA  
HONG KONG



### Accommodation and Facilities

Ushering in a new era of guest personalization, 300 newly-enhanced guestrooms and suites offer a bespoke residential experience with leading-edge technology, finest design and craftsmanship and the legendary service. The hotel features fitness facilities, a spa, fine-dining restaurants and a selection of banquet venues to cater for the needs of both leisure and business travelers.

### Location and Accessibility

Located in the heart of Tsim Sha Tsui, this landmark hotel is within walking distance of the MTR station and highly accessible to museums, cultural landmarks and different parts of the city. A fleet of fourteen luxurious Rolls-Royce limousines and a helicopter are exclusively available for airport transfers and hourly hire.



Address: Salisbury Road, Tsim Sha Tsui, Kowloon Total no. of rooms: 300 Room size: 456 – 4,111 sq. ft.  
Price range (published rates): HK\$4,180 – \$128,000 Tel: (852) 2920 2888 Fax: (852) 2722 4170  
Website: peninsula.com/hongkong Email: phk@peninsula.com



# GATEWAY HOTEL

## the gateway to opulent living

Housed in Hong Kong's largest shopping complex, Gateway Hotel offers luxurious accommodation and comprehensive facilities with all chic elements.



### Accommodation and Facilities

With 400 bright and luxurious air-conditioned rooms, of which 51 are suites, Gateway Hotel equips them with all the modcons, including a handy smartphone, and deluxe amenities, such as tea-making facilities and a Nespresso coffee machine with complimentary capsules. Wi-Fi is complimentary and the mini-bar service in every room is replenished daily. All suites offer the transformative pleasure of a rain shower in its newly designed marble bathrooms.

There is also a stylish all day dining restaurant Three on Canton offers scrumptious delicacies and wines. For those who enjoy sunshine and natural breeze, Be on Canton offers al fresco dining, cocktails and aperitifs served with delectable bites.

### Location and Accessibility

Located in Hong Kong's largest shopping complex Harbour City, Gateway Hotel is the ultimate place for memorable

shopping experience. The hotel is also surrounded by a plethora of cultural, entertainment and recreational facilities. In the vicinity are Kowloon Park, Hong Kong Cultural Centre, Hong Kong Museum of Art, Space Museum and the harborside promenade. It is a mere 10-minute ride by the iconic Star Ferry to the Hong Kong Convention and Exhibition Centre. There is easy commute by the MTR to the Hong Kong International Airport on the Airport Express. Shuttle bus service connecting the hotel and the Airport is also available.



Address: Harbour City, Tsim Sha Tsui, Kowloon Total no. of rooms: 400 Room size: 350 – 590 sq. ft.  
Price range (published rates): HK\$1,550 – \$4,500+ Tel: (852) 2113 0888 Fax: (852) 2113 0022  
Website: marcopolohotels.com Email: resv.gtw@marcopolohotels.com





## ATTITUDE ON GRANVILLE

### A slice of old Hong Kong

Combining the theme of Tsim Sha Tsui and old Hong Kong, Attitude on Granville features a wide variety of landmarks in the area ranging from the Star Avenue, Clock Tower, star ferry and even the famous big yellow floating duck. Offering guests a truly culturally rich lodging experience of Hong Kong.



#### Accommodation and Facilities

The 81 playful guestrooms are categorized into Urban, Cozy, Elite and Studio Suite. Each of the room has been individually designed in a twisted nostalgic style, showcasing Tsim Sha Tsui themed wall graphics and a specially curated collection of retro furniture. Some rooms also provide double sofa beds which perfectly accommodate families with children.

#### Location and Accessibility

It takes just 3 minutes walk to Tsim Sha Tsui MTR Exit B and diagonally across The One, one of the most popular shopping malls in the area. The hotel is also at a stone's throw distance from K11 shopping centre and Art Gallery. An endless appetizing chains of international cuisines and bars along Knutsford Terrace is right on the doorstep.



#### Dining

The award winning cartoon dim sum restaurant Yum Cha located on 3/F boasts traditional Chinese cuisine with a modern "wow the crowd" twist. Contemporary European restaurant Urban Park on level 4 serves cocktails, western cuisine and even Boba Beer Shisha. This trendy outlet also features an open-air terrace overlooking the busy Granville Road.



Address: 20 Granville Road, Tsim Sha Tsui, Kowloon Total no. of rooms: 81 Room size: 160 – 380 sq. ft.  
Price range (published rates): HK\$2,000 – \$3,500 Tel: (852) 2105 3888 Fax: (852) 2105 3820  
Website: www.soravithotels.com Email: info@soravithotels.com



## MARCO POLO HONGKONG HOTEL

### Mesmerize in shimmering harbour lights

Located closest to the iconic Star Ferry at the tip of the Tsim Sha Tsui peninsula, Marco Polo Hongkong Hotel enjoys an unrivaled panoramic view of Victoria Harbour renowned the world over for its stunning splendor.



#### Accommodation and Facilities

As many as 665 guestrooms and suites, ranging from Superior and Deluxe to Continental Club and Harbour View, have been elegantly furnished to cater to varying guest needs, together with complimentary Wi-Fi and handy smartphone. Marco Polo Hongkong Hotel has everything a customer possibly needs to conduct a business or leisure trip.

Exquisite in-house dining outlets include the Cucina serving traditional Italian delicacies. The 54-seat Lobby Lounge is a cozy rendezvous destination for light lunches, teatime treats or relaxed cocktails. The bar was conferred with a Guinness World Record for the largest selection of rums in 2008. An alternative is Cafe Marco, which serves a scrumptious array of international specialty dishes from the all-day kitchens. Abundant buffets and creative a la carte dishes are ideal for pre- or post-shopping gourmets.

Hotel facilities include a swimming pool, 24-hour gym and meeting facilities.

#### Location and Accessibility

Marco Polo Hongkong Hotel is situated in a distinguished neighbourhood where cultural attractions and shopping malls abound. Within an easy short stroll are such tourist hotspots as Harbour City, Kowloon Park, Space Museum, the Art Museum, and the Hong Kong Cultural Centre, while nearby MTR stations provide excellent connections to other parts of the metropolis, including the International Airport.



Address: Harbour City, Tsim Sha Tsui, Kowloon Total no. of rooms: 665 Room size: 350 – 1090 sq. ft.  
Price range (published rates): HK\$1,650 – \$4,500+ Tel: (852) 2113 0088 Fax: (852) 2113 0011  
Website: marcopolohotels.com Email: resv:hkh@marcopolohotels.com





## THE LANGHAM, HONG KONG

Crafting the art of the stay where luxury is always in style

Awarded as a Forbes Travel Guide Five-Star property, the hotel epitomises luxury with European elegance and a multimillion transformation. Home to three-Michelin-star cuisine, this Tsim Sha Tsui residence showcases designer rooms and suites, captivates the senses and defines personalised service.

THE LANGHAM  
HONG KONG

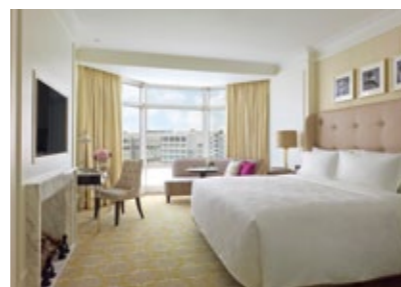
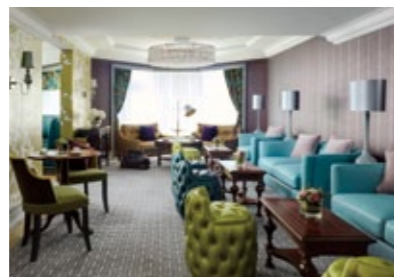


### Accommodation and Facilities

Offering 498 deluxe guestrooms and designer suites, the hotel allows guests to enjoy an eclectic range of well-appointed facilities. Apart from the Grand Ballroom, function rooms, and business centre, guests can enjoy a relaxing swim at the rooftop pool, and pamper themselves at The Langham Club lounge and Chuan Body + Soul spa which is expected to open in April 2017. There is also a feast of options in dining. Experience authentic Cantonese cuisine at Three-Michelin-Starred T'ang Court, indulge in a classy afternoon tea with Wedgwood at Palm Court, treat yourself to imported steaks and fresh seafood at Bostonian Seafood and Grill and grab a few artisanal cocktails at the award-winning Artesian bar.

### Location and Accessibility

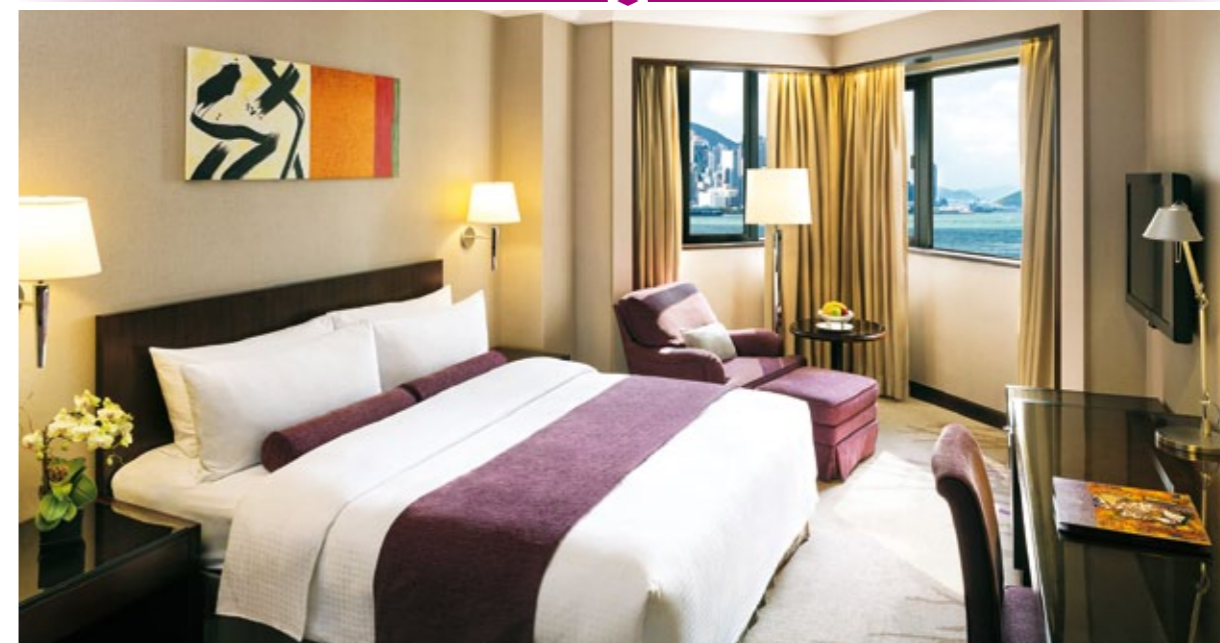
Conveniently nestled in the bustling Tsim Sha Tsui district, the hotel is in the neighborhood of designer boutiques and the well-known Harbour City Shopping Complex. Easily accessible to all points of the city, the hotel is within walking distance to the MTR station, Star Ferry and Victoria Harbour, as well as the China and Macau Ferry Terminal.



## PRINCE HOTEL

at the doorstep of everything

Conveniently located on Canton Road, the heart of the commercial, shopping and entertainment district of Tsim Sha Tsui, Prince Hotel is close to everything travellers might need.



### Accommodation and Facilities

To take care of traveller's needs and offer a home-like environment, all the rooms are equipped with complimentary Wi-Fi, handy smartphone, extensive selection of TV channels, hairdryer, IDD telephone, personal voice mail, mini-bar / refrigerator, tea and coffee making facilities and in-room safe. For business travellers, Prince Hotel provides well-equipped banquet, meeting and conference facilities.

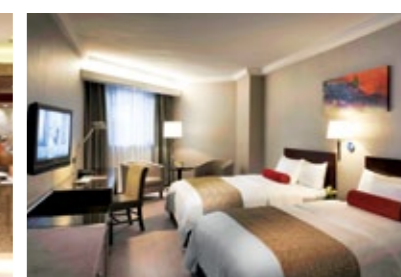
For culinary delights, the restaurant add@Prince offers a delectable range of dining options; it is an urban bistro, café and the ultimate buffet destination. Thai, Indian and Hong Kong chefs serve authentic buffet dishes with an amazing selection of seafood. World-class specialty cuisines go on centre stage with signature Cantonese, Japanese and Pan Asian delicacies.

### Location and Accessibility

Prince Hotel is an integral part of Harbour City, Hong Kong's largest shopping complex which houses a bewildering array of branded boutiques, fine restaurants and

entertainment spots. Its environ boasts a fascinating choice of cultural and heritage destinations, including 1881 Heritage, the Hong Kong Museum of Art and the Hong Kong Cultural Centre. And of course, the renowned Victoria Harbour promises a stunning view by day and by night.

The MTR station that can whisk you to other parts of the city, and the Star Ferry that carries you in style to Hong Kong Island are just a short stroll from the hotel, not to mention the easy accessibility to the Hong Kong International Airport through the hotel's shuttle bus service.



Address: 8 Peking Road, Tsim Sha Tsui, Kowloon, Hong Kong Total no. of rooms: 498

Room size: 340 - 1,320 sq. ft. Price range (published rates): HK\$2,650 - \$12,300 Tel: (852) 2375 1133

Website: langhamhotels.com/hongkong Email: tlhkg.resv@langhamhotels.com



Address: Harbour City, Tsim Sha Tsui, Kowloon Total no. of rooms: 394 Room size: 314 - 601 sq. ft.

Price range (published rates): HK\$1,450 - \$4,300+ Tel: (852) 2113 1888 Fax: (852) 2113 0066

Website: marcopolohotels.com Email: resv.prn@marcopolohotels.com





# HOTEL PRAVO HONG KONG

Right in the heart of Kowloon

Located at the core of the bustling metropolis, Hotel Pravo Hong Kong is where the action is, whilst offering weary travellers an oasis of comfort and serenity.



## Accommodation and Facilities

Choose from a choice of five sleek and design-themed rooms – dark, light, feminine, masculine and luxury - for one that is best suited for your travel needs. Each hotel room is fitted with a sumptuous queen-sized bed, free mini-bar with daily refreshment, a complimentary handy smartphone with unlimited 3G mobile data, unlimited local calls and IDD calls to 10 selected countries, as well as high-speed Wi-Fi for you to stay connected on the go and in the tranquility of your room.

In the evening, guests can chill out at the multipurpose rooftop patio featuring fantastic views of Victoria Harbour and the Tsim Sha Tsui waterfront. Available for exclusive rental with a standing capacity catering up to 80 guests, the urban skyline backdrop would definitely add color to your private event.

## Location and Accessibility

Located right in the hubbub of Hong Kong's busiest and trendiest shopping

strip, Hotel Pravo Hong Kong is a 3-minute walk to the Tsim Sha Tsui MTR Station and 7 minutes to the Star Ferry Pier where travellers get the chance to ride on the iconic Star Ferry while enjoying fabulous views of Victoria Harbour.

A whole host of shopping malls are located in the vicinity, from iSQUARE and T Galleria Duty Free to Harbour City and 1881 Heritage. Shoppers will find themselves grasping the exact reason why Hong Kong is crowned one of Asia's biggest shopping metropolises.



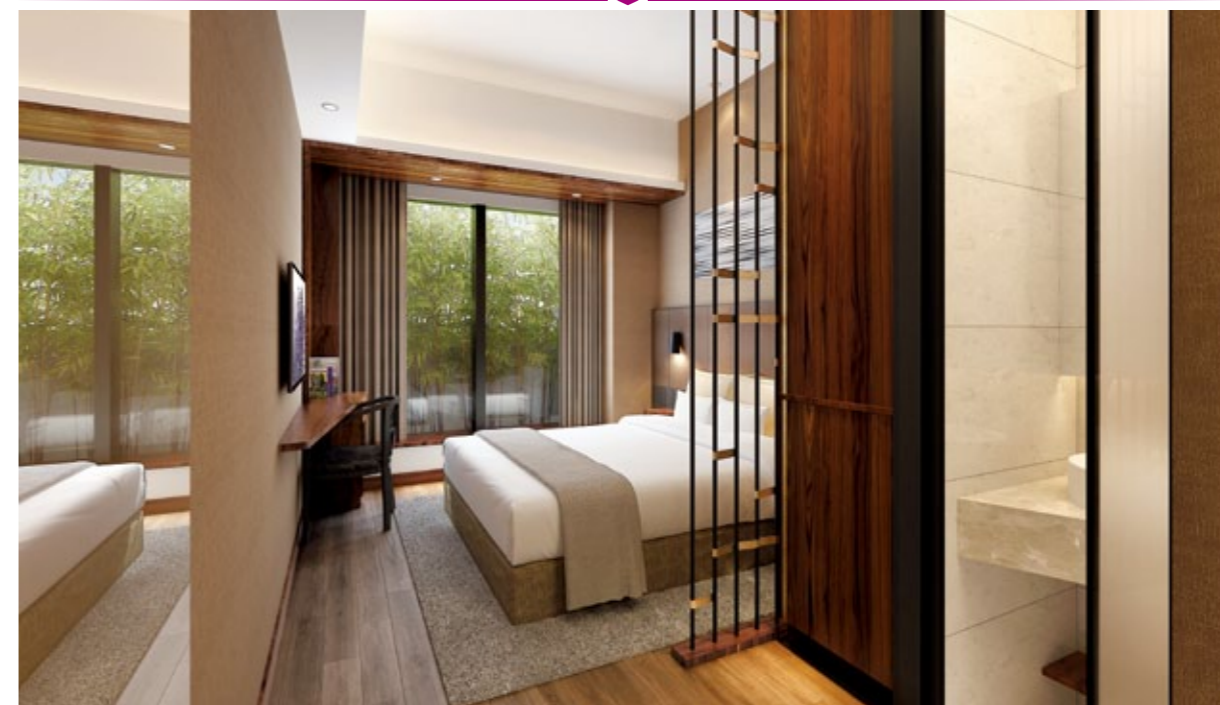
Address: No.10 Peking Road, Tsim Sha Tsui Total no. of rooms: 92 Room size: 143 – 469 sq. ft.  
Price range (published rates): HK\$720 – \$2,950 Tel: (852) 3188 7888  
Website: [www.citadines.com/china/hong-kong/hotel-pravo-hong-kong](http://www.citadines.com/china/hong-kong/hotel-pravo-hong-kong) Email: [enquiry.hongkong@the-ascott.com](mailto:enquiry.hongkong@the-ascott.com)



# SORAVIT ON GRANVILLE

Sleep in a Thai way

Influenced by Thai cultural and traditional elements, Soravit on Granville aims to illustrate the beauty of Thailand with traditional elements, such as Water festival Songkran, the majestic elephants, the sculptures, the Buddha and the guardian angels for guests to experience the tranquility, hospitality, and comfort at the heart of Hong Kong.



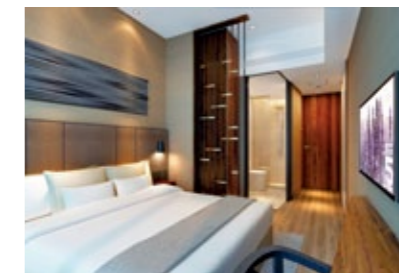
## Accommodation and Facilities

Offering the vibes of South East Asia and hospitality services in Thai style, the hotel features original handcrafted fine artworks from Thailand to bring a taste of contemporary oriental living. Though the rooms are petit, the specially designed high ceilings enable guests to enjoy the spaciousness with all the necessities and essential appliances within reach.

The two-story chic restaurant Queen's Dining on the first and second floors serves a mix of the most popular Asian cuisines, Chinese, Vietnamese, and Thai. The floor-to-ceiling windows create an airy atmosphere for diners to have a relaxed meal. With the Head Chef's specialties in Chinese and Vietnamese, Queen's Dining also features a great selection of Thai desserts initiated by Mrs. Em-On Fu from Queen's Kitchen.

## Location and Accessibility

Located within close proximity to Kimberley Street ('Korean Street of Hong Kong'), The One, Canton Road, Nathan Road, and Mira Mall, Soravit on Granville guarantees convenience. With numerous MTR access points around the hotel, guests can also get to all other parts of Hong Kong at ease.



Address: 29A Granville Road, Tsim Sha Tsui, Kowloon Total no. of rooms: 65 Room size: 180 – 380 sq. ft.  
Price range (published rates): HK\$2,300 – \$3,800 Tel: (852) 2105 3888 Fax: (852) 2105 3820  
Website: [www.soravithotels.com](http://www.soravithotels.com) Email: [info@soravithotels.com](mailto:info@soravithotels.com)







## HOLIDAY INN GOLDEN MILE

### Supreme downtown location

*Fronting the major thoroughfare of Nathan Road in the southern tip of Kowloon peninsula, Holiday Inn Golden Mile offers unrivaled convenience whether for business or pleasure.*



### Accommodation and Facilities

With its invitingly comfortable guest rooms and suites, Holiday Inn Golden Mile incorporates comprehensive amenities and facilities for the exclusive comfort and convenience of its guests. Travelers can also indulge in the rooftop outdoor swimming pool and poolside bar, before relaxing a massage service with steam and sauna.

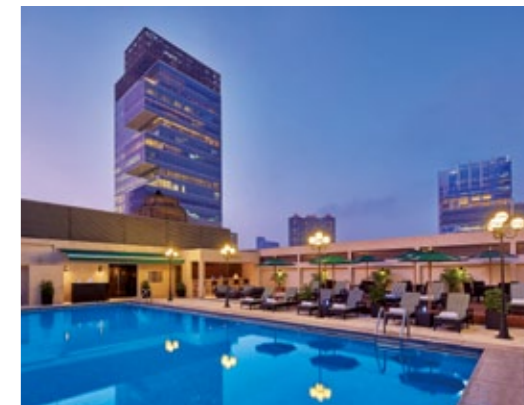
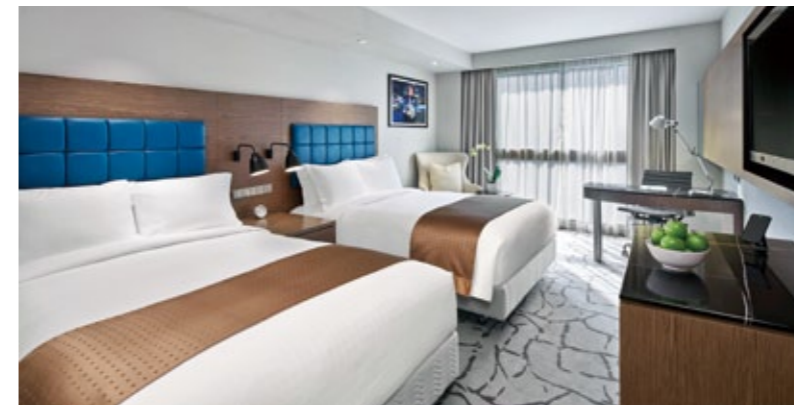
To bring Holiday Inn Golden Mile into a new era, the iconic hotel has unveiled a sparkling new look for its Lobby and Public Areas, created by Design Worldwide Partnership. Fusing Hong Kong's modernity and dynamism with Holiday Inn Golden Mile's long heritage of warm hospitality, the design reflects both its contemporary edge and the traditions of the well-known hotel.

Tapping into the unique east-meets-west culture of Hong Kong, the hotel offers tempting dining options with three restaurants and a bar. The award-winning Loong Yuen Cantonese Restaurant serves regional Chinese cuisine, while Osteria Ristorante Italiano offers multi-regional Italian cuisine in an inviting and relaxed setting. Bistro on the Mile serves guests with 4 daily seafood buffets and an a la carte menu offering international favorites. Hari's Bar, on the other hand, has live entertainment and a long Happy Hour nightly.

To keep its guests in touch with their loved ones or business partners, a free handy Smartphone is provided, offering unlimited free local calls and international calls to 10 countries, while complimentary access to 4,000+ newspapers and magazines via PressReader is available to bring the most updated news. Free high-speed internet covers the hotel area too.

### Location and Accessibility

Located in the heart of bustling commercial center of Tsim Sha Tsui, Holiday Inn Golden Mile is adjacent to the MTR station which enables guests to access Hong Kong's other major commercial and tourist spots in next to no time. The famous Star Ferry is within five minutes' walk and the International Airport is just a forty-minute drive away.



Address: 50 Nathan Road, Tsim Sha Tsui, Kowloon Total no. of rooms: 621 Room size: 210–310 sq. ft.  
Price range (published rates): HK\$1,100–\$3,400 Tel: (852) 2369 3111 Fax: (852) 2369 8016  
Website: www.holidayinn.com/hongkong-gldn Email: resery@goldenmile.com





## Xi HOTEL

service from the heart

*As its Chinese name implies, Xi Hotel is dedicated to serving its customers from the heart.*



### Location and Accessibility

Nestled in the commercial hub of Tsim Sha Tsui, Xi Hotel is in a handy location for a night out on the town with restaurants, bars and night clubs galore in the neighborhood, while daytime attractions include a plethora of mega-sized shopping malls, cultural and historical hotspots and impeccable views of the world-renowned Victoria Harbour from the nearby harbor-front promenade.

Minutes away from the MTR and only a short walk from the Star Ferry, Xi Hotel enjoys excellent connectivity to other districts of this vibrant metropolis. It is also within easy reach of Kowloon Station to catch the Airport Express.

### Fabulous Room Facilities

The hotel's 64 rooms (including 2 Suites) are all furnished in a contemporary style with emphasis on comfort. Fully equipped for business and leisure travelers, complimentary Smartphone with 3G internet, IDD and local calls, free broadband internet connection, in-room safe, SmartTV with cable channels, mini-bar and air purifier are available in all rooms.

### Courtney's Wine Bar

Recognized as one of the top five bars in Tsim Sha Tsui by Lonely Planet, Courtney's Wine Bar is named after artist Pauline Courtney, whose original artworks adorn the walls. It is a cultured wine bar where guests can enjoy breakfast in the morning and relax with drinks at night. Guests can sit indoors in an intimately dim-lit and wooden décor, or in an alfresco outdoors setting with an overhanging garden that overlooks the breath-taking skyline of Hong Kong.

### The New Function Room

Business travelers will appreciate the new function room that is equipped for meetings or conferences. Furnishings include a long 12-person conference table which can be partitioned accordingly, stylish sofas, a wide-screen TV, and a library.



Address: 7 Minden Avenue, Tsim Sha Tsui, Kowloon Total no. of rooms: 64 Room size: 260 – 580 sq. ft.  
 Price range (published rates): HK\$1,800 – \$3,300 Tel: (852) 2739 7777 Fax: (852) 2739 3777  
 Website: [www.xihotel.com.hk](http://www.xihotel.com.hk) Email: [rsvm@xihotel.com.hk](mailto:rsvm@xihotel.com.hk)





**Sheraton®**

HONG KONG  
HOTEL & TOWERS

## SHERATON HONG KONG HOTEL & TOWERS

### The Crown on the Golden Mile

*In the centre of Kowloon's shopping and entertainment district, Sheraton Hong Kong Hotel & Towers is perfectly positioned at the top of Kowloon's legendary Golden Mile with an envied Victoria Harbour frontage.*



#### Accommodation and Facilities

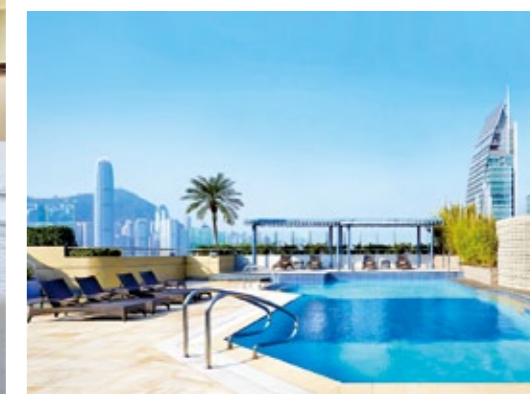
The hotel's 782 sleek, inviting guest rooms and suites are picturesque places to relax as many offer a postcard view of the famed Victoria Harbour. Guests can indulge in the temperature controlled roof-top pool, and unwind on the sundeck and Jacuzzi, whilst taking in the spectacular view of the harbor. Services such as laundry and concierge services, currency exchange, airport pickup, and babysitting service are available on request.

To savor Hong Kong's acclaimed culinary delights, guests need go no further than the hotel's own restaurants and lounges. There is the seafood to go with premium wines in the Oyster & Wine Bar, which features more than 25 variations of jet-fresh oysters daily – all flown in from the choicest waters and freshly shucked to guarantee the finest flavors. Or visit Celestial Court Chinese Restaurant for authentic Cantonese cuisine and award-winning dim sum, complemented by a wide selection of Chinese teas. For afternoon tea or pre-dinner drinks, the Sky Lounge is the perfect place to enjoy Victoria Harbour's spectacular sunsets along with fine wine, cocktails and fine nibbles.



#### Location and Accessibility

Strategically located in Tsim Sha Tsui, the vibrant heart of Kowloon peninsula, the hotel is only a stone's throw from the subway stations of Tsim Sha Tsui and East Tsim Sha Tsui, the Star Ferry pier, and other modes of transportation. A plethora of cultural and entertainment tourist hotspots, including four major museums, the Tsim Sha Tsui waterfront promenade and a galaxy of shopping malls are in the vicinity.



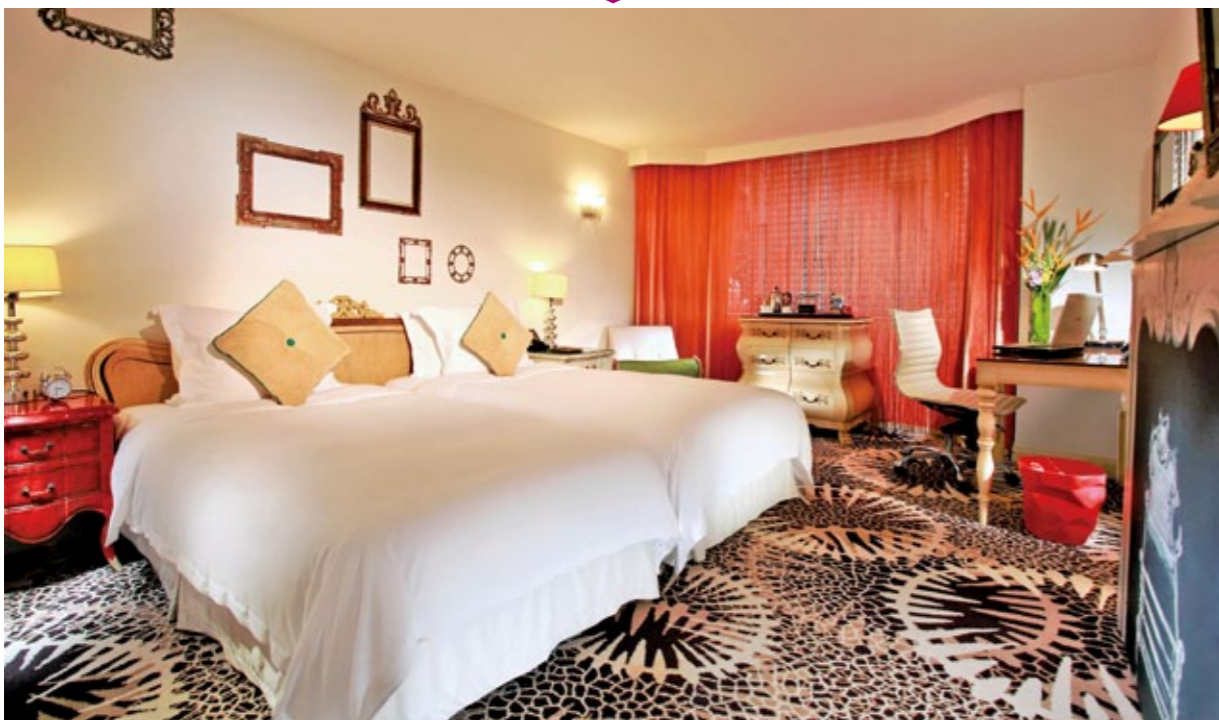
Address: 20 Nathan Road, Tsim Sha Tsui, Kowloon Total no. of rooms: 782 Room size: 206 – 1,640 sq. ft.  
Price range (published rates): HK\$4,600 – \$16,000 Tel: (852) 2369 1111 Fax: (852) 2739 8707  
Website: [www.sheratonhongkonghotel.com](http://www.sheratonhongkonghotel.com) Email: [res.hongkong@sheraton.com](mailto:res.hongkong@sheraton.com)



## THE LUXE MANOR

### A taste of European luxury

A stylish, surrealism-inspired boutique hotel located in the commercial hub of Tsim Sha Tsui, The Luxe Manor features splendid European architecture, together with personalized service and excellent facilities.



#### Accommodation and Facilities

The 153 guest rooms and 6 themed suites are well-appointed with comfort and convenience amenities. In addition to a high-definition flat-screen TV with cable channels, each room comes with an en suite marble bathroom complete with a rain shower.

To make sure travelers stay in touch with family, friends or business associates, the hotel area is covered by a WiFi network, and there is free use of Smartphone with unlimited 3G data, unlimited local calls and international calls to Australia, China, Germany, Japan, Korea, Singapore, Taiwan, Thailand, the UK & the US. Business travelers will appreciate the facilities of the business center with full secretarial services, while other services encompass the concierge, limousine, shuttle bus, car rental, and ticketing.

The Luxe Manor also offers exceptional cuisine in its restaurant and bar. FINDS, Hong Kong's first Nordic restaurant, offers dishes with seasonal ingredients imported directly from Northern Europe, and employs typical Nordic cooking techniques, including smoking, curing, pickling and fermenting. Dada Bar + Lounge, as inspired by the Dadaism art movement, serve innovative cocktails and drinking bites. Live jazz bands are on stage every Friday and Saturday.

#### Location and Accessibility

Only 35 minutes away from the airport and nestled in the heart of the commercial and entertainment district of Tsim Sha Tsui, The Luxe Manor offers convenient access to an eclectic collection of shopping malls, retail stores, museums and restaurants & bars.



Address: 39 Kimberley Road, Tsim Sha Tsui, Kowloon Total no. of rooms: 159 Room size: 240 – 760 sq. ft.  
Price range (published rates): HK\$2,800 – \$9,800 Tel: (852) 3763 8888 Fax: (852) 3763 8899  
Website: www.theluxemanor.com Email: info@theluxemanor.com



## HULLETT HOUSE

### steeped in history

Embodying Hong Kong's unique "East meets West" spirit, the design-led heritage Hullett House consists of 10 exclusive suites and a wide range of dining options, all set in an iconic landscaped garden compound.



#### Accommodation and Facilities

Built in 1881, Hullett House had been the headquarters of Hong Kong's Marine Police in the colonial period. It has now undergone a sublime transformation into a refined complex containing ten suites, seven restaurants and bars.

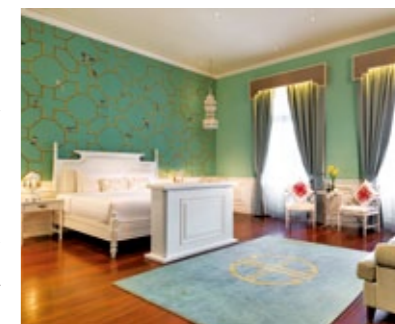
Encapsulating the rich heritage and history, each suite, with size ranging from 887 to 940 square feet, is themed to depict a period in history and named after one of Hong Kong's numerous picturesque bays. Overlooking the city, Victoria Harbour, or the landscaped gardens and grand courtyard, the balcony in each room opens out to spectacular views. Guest can also appoint a personal butler to serve all needs, including arranging tours and shuttle bus.

The multi-award-winning hotel boasts an eclectic selection of restaurants and bars, offering a wide variety of cuisines and drinks. Loong Toh Yuen is a signature

Chinese restaurant offering long-lost Hong Kong dishes and classic dim sums. For history buffs, try Mariners' Rest, a local British pub, in Hullett House's own original jail cells. Other restaurants, including St. George, Stables Grill, Whisky@Stables, The Parlour and Champagne Gallery, are also featured with different styles and themes to serve local or international delicacies.

#### Location and Accessibility

The iconic hotel is on a privileged site right in the heart of the dynamic Tsim Sha Tsui shopping and cultural hub. Residents can pop over to the Cultural Centre, the Star Ferry and the waterfront promenade via a pedestrian subway. It takes less than 5 minutes' walk to reach the Tsim Sha Tsui MTR station that provides convenient and swift connections to other parts of Hong Kong.



Address: 1881 Heritage, 2A Canton Road, Tsim Sha Tsui, Kowloon Total no. of rooms: 10 Room size: 887 – 940 sq. ft.  
Price range (published rates): HK\$4,500 – \$7,500 Tel: (852) 3988 0000 Fax: (852) 2366 3625  
Website: www.hulletthouse.com Email: reservation@hulletthouse.com







---

NEW TERRITORIES  
LUXE HOTELS

---





MARRIOTT  
HONG KONG SKYCITY  
香港天際萬豪酒店

## HONG KONG SKYCITY MARRIOTT HOTEL

A luxurious retreat

*Nestled on the edge of Lantau Island, the Hong Kong SkyCity Marriott Hotel provides a refreshing escape from the bustling city and a perfect spot for staycations.*



### Accommodation and Facilities

The hotel has 658 spacious king or double rooms featuring ocean or skyline views. All rooms are equipped with luxurious bedding, flat-screen TVs, in-room safes, mini-bars, and marble bathrooms. Plug-in technology panels and high-speed internet access are also available in all rooms.

### Location and Accessibility

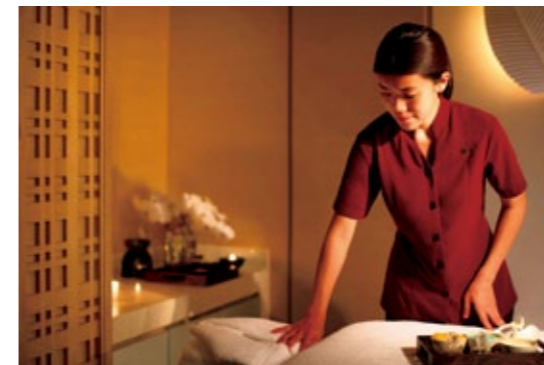
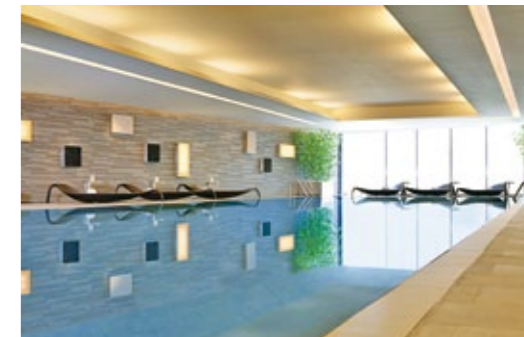
The hotel is closely located to the Hong Kong International Airport, and various tourist attractions and business venues, such as Hong Kong Disneyland, Ngong Ping 360, Citygate Outlets, The Big Buddha, Po Lin Monastery, and AsiaWorld-Expo. The central business district is a 28-minute train ride away. Complimentary shuttle bus service is available to the airport, Tung Chung MTR station and Hong Kong Disneyland.

### Restaurants and Lounges

Food and beverage options abound within the hotel, including Man Ho Chinese Restaurant – authentic Cantonese cuisine; SkyCity Bistro – international buffets; The Lounge for afternoon tea; Java+ serving gourmet coffee and cakes; Velocity Bar & Grill, a contemporary sports bar serving your favorite American cuisine and beers.

### Recreation and Leisure

Hong Kong SkyCity Marriott Hotel has a well-equipped Health Club comprising a 24-hour gym, a 27-meter indoor heated swimming pool and the Marriott's signature Quan Spa. Renowned for its tranquility zones and strict adherence to offering local and authentic treatments, Quan Spa offers a variety of treatments which draw on the restorative properties of water to offer an oasis of healing and rejuvenation.



Address: 1 Sky City Road East, Hong Kong International Airport, Lantau, Hong Kong  
Total no. of rooms: 658 Room size: 377 – 764 sq. ft. Tel: (852) 3969 1888 Fax: (852) 3969 2288  
Website: [www.skycitymarriott.com](http://www.skycitymarriott.com) Email: [skycity.ays@marriott.com](mailto:skycity.ays@marriott.com)



# HARBOUR PLAZA RESORT CITY

Indulge in the serenity

Located away from the bustling city, Harbour Plaza Resort City offers a tranquil resort environment with an unobstructed sweeping view of Tin Shui Wai Central Park.



## Accommodation and Facilities

Fully furnished with premium fittings for unparalleled comfort and style, all 1,102 rooms and suites are equipped with top-notch provisions and amenities, including satellite TV with cable channels, refrigerator, microwave oven, electronic safe, with free local calls and in-room WiFi service. Living in Harbour Plaza Resort City is also a hassle-free experience as housekeeping services with frequent change of towel and linen, as well as 24-hour security and concierge services are available.

The resort property thrills its residents with a large outdoor swimming pool on the landscaped garden podium level, together with a comprehensive Fitness Club that features one of Hong Kong's longest indoor jogging tracks. After a break of sweat in the sports amenities, residents can unwind their stretched muscles and relax in the saunas and steam rooms, before heading to the 60,000 sq. m. Fortune Kingswood shopping mall to indulge in

local and international delicacies in the fine restaurants there. An array of over 200 dining, retail and entertainment options are available in the mall.

There is also a variety of functions rooms featured in the hotel to accommodate up to 500 guests for meetings, conferences, seminars and exhibitions.

## Location and Accessibility

The hotel enjoys supreme accessibility thanks to the nearby Tin Shui Wai MTR station which connects with the extensive MTR West Rail and Route 3 Expressway, allowing easy transfer to other parts of the city. It takes only 30 minutes by train and 40 minutes by bus to reach the vibrant entertainment and culture hub of Tsim Sha Tsui. With highways and railways connecting the Hong Kong International Airport, commuting to the hotel is a breeze.

For China commuters, in close proximity is the Hong Kong-Shenzhen Western Corridor that leads to the mainland in next to no time.



# HARBOUR PLAZA RESORT CITY MONTHLY SERVICED SUITES PACKAGE

Best Choice for Newlyweds,  
Singles, Home Renovation  
and Corporate



(852) 2123-8888  
servicedsuites.hprc@harbour-plaza.com

HK\$13,800 up\*

Just 30-mins from/to City, China and Macau  
Connected with Control Points by bus/MTR

- Free use of gym room and swimming pool (seasonal operation)
- No security deposit required for short-term lease
- Utilities and housekeeping services included
- Fixed price included Wi-Fi
- Enjoy early-bird offers

\* Terms and conditions apply

More transportation details



www.harbour-plaza.com/hprc



12 Tin Yan Road, Tin Shui Wai  
(MTR Tin Shui Wai Station Exit E2, interchange with Light Rail to Ginza Stop)

HARBOUR  
PLAZA  
Resort City  
TIN SHUI WAI · HONG KONG  
嘉湖海逸酒店

Harbour Plaza Resort City Limited  
(Incorporated in British Virgin Islands) A member of Harbour Plaza Hotels and Resorts







HYATT  
REGENCY™

## HYATT REGENCY HONG KONG, SHA TIN

A five-star urban resort

*Featuring calming views of Tolo Harbour and Kau To Shan, Hyatt Regency Hong Kong, Sha Tin's spacious guestrooms and suites are suitable for a relaxing getaway or business stay.*



### Accommodation and Facilities

The hotel is home to 559 guestrooms and suites, offering panoramic views of Tolo Harbour, Kau To Shan and Sha Tin Racecourse. A wide range of facilities is available, including the 24-hour Fitness Centre, an outdoor heated swimming pool, the Melo Spa, and five restaurants and bars.

### Location and Accessibility

The hotel is just three minutes' walk from University MTR station and 30 minutes' drive from Hong Kong International Airport and Tsim Sha Tsui. Hyatt Regency Hong Kong, Sha Tin is also located in close proximity to famous sightseeing spots including the Ten Thousand Buddhas Monastery and Sha Tin Racecourse. The hotel provides a complimentary shuttle bus service that runs between the hotel, New Town Plaza, Airport Express Kowloon Station and Tsim Sha Tsui.

### Sha Tin 18

Sha Tin 18 serves authentic Cantonese and northern Chinese cuisines in a lively show kitchen environment. Guests at the Chinese restaurant can savor the delicacies with a front row view of the chefs in action in the show kitchens. The restaurant also has five private dining rooms, a spacious outdoor terrace and an outdoor bar.

### Tin Tin Bar

Tin Tin Bar offers an extensive selection of unique mixed drinks and cocktails, single malt whiskeys, vodkas, and more in a warm and contemporary setting. The bar features a bar counter, lounge seats, four comfortable booths, a private room, and live music, such as timeless ballads and swing jazz favorites.

Address: 18 Chak Cheung Street, Sha Tin, Hong Kong Total no. of rooms: 559  
Room size: 377 – 2,476 sq. ft. Tel: (852) 3723 1234 Fax: (852) 3723 1235  
Website: hongkongshatin.regency.hyatt.com Email: hongkong.shatin@hyatt.com





**Attitude on Granville**

A 20 Granville Road, Tsim Sha Tsui  
 T (852) 2105 3888 F (852) 2105 3820  
 W www.soravithotels.com



**Auberge Discovery Bay Hong Kong**

A 88 Siena Avenue, Discovery Bay, Lantau Island  
 T (852) 2295 8288 F (852) 2295 8188  
 W www.aubergediscoverybay.com



**Four Seasons Hotel Hong Kong**

A 8 Finance Street, Central  
 T (852) 3196 8888 F (852) 3196 8899  
 W www.fourseasons.com/hongkong



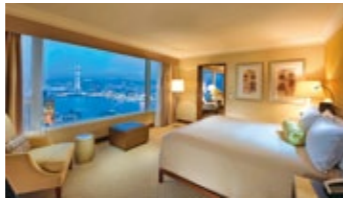
**Gateway Hotel**

A Harbour City, Tsim Sha Tsui  
 T (852) 2113 0888 F (852) 2113 0022  
 W www.marcopolohotels.com



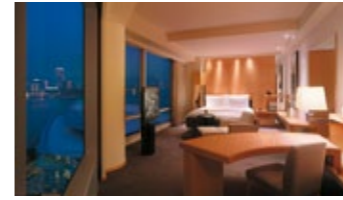
**Citadines Mercer Hong Kong**

A No.29 Jervois Street, Sheung Wan  
 T (852) 2922 9988  
 W www.citadines.com/china/hong-kong/citadines-mercerc-hong-kong



**Conrad Hong Kong**

A Pacific Place, 88 Queensway, Admiralty  
 T (852) 2521 3838 F (852) 2521 3888  
 W www.conradhotels.com/hongkong



**Grand Hyatt Hong Kong**

A 1 Harbour Road, Wan Chai  
 T (852) 2588 1234 F (852) 2802 0677  
 W www.hongkong.grand.hyatt.com



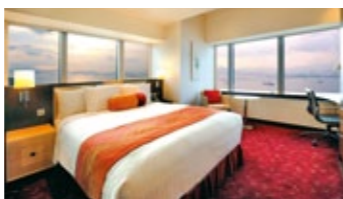
**Harbour Grand Hong Kong**

A 23 Oil Street, North Point  
 T (852) 2121 2688 F (852) 2121 2699  
 W www.harbourgrand.com/hongkong



**Cordis Hong Kong**

A 555 Shanghai Street, Mongkok  
 T (852) 3552 3388 F (852) 3552 3322  
 W www.cordishotels.com/en/hong-kong



**Courtyard by Marriott Hong Kong**

A 167 Connaught Road West  
 T (852) 3717 8888 F (852) 3717 8228  
 W www.courtyardhongkong.com



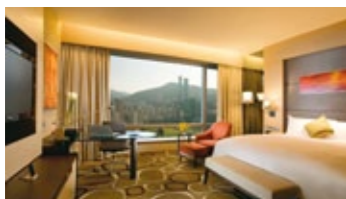
**Harbour Grand Kowloon**

A 20 Tak Fung Street, Whampoa Garden, Hung Hom  
 T (852) 2621 3188 F (852) 2621 3311  
 W www.harbourgrand.com/kowloon



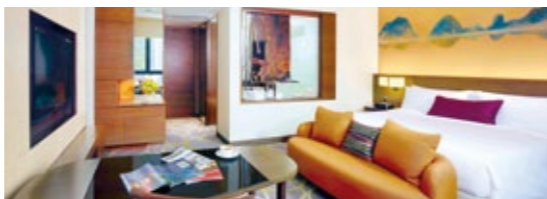
**Harbour Plaza 8 Degrees**

A 199 Kowloon City Road, To Kwa Wan  
 T (852) 3900 3000 F (852) 3900 3008  
 W www.harbour-plaza.com/hp8d



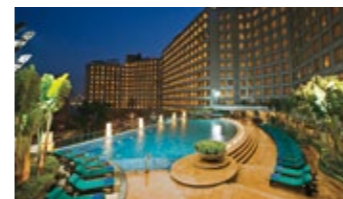
**Crowne Plaza Hong Kong Causeway Bay**

A 8 Leighton Road, Causeway Bay  
 T (852) 3980 3980 F (852) 3980 3900  
 W www.cphongkong.com



**Crowne Plaza Hong Kong Kowloon East**

A 3 Tong Tak Street, Tseung Kwan O  
 T (852) 3983 0388 F (852) 3983 0399  
 W www.crowneplaza.com/kowlooneast



**Harbour Plaza Metropolis**

A 7 Metropolis Drive, Hung Hom  
 T (852) 3160 6822 F (852) 3160 6926  
 W www.harbour-plaza.com



**Harbour Plaza North Point**

A 665 King's Road, North Point  
 T (852) 2187 8888 F (852) 2187 8899  
 W www.harbour-plaza.com/hpnp



**Disney's Hollywood Hotel**

A Hong Kong Disneyland Resort, Lantau Island  
 T (852) 3510 5000 F (852) 3510 5333  
 W www.hongkongdisneyland.com/hotels/disneys-hollywood-hotel/



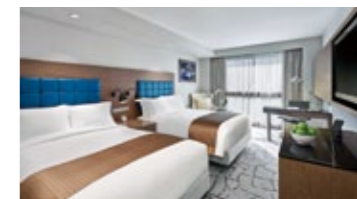
**EAST, Hong Kong**

A 29 Taikoo Shing Road, Island East  
 T (852) 3968 3968 F (852) 3968 3988  
 W www.east-hongkong.com



**Harbour Plaza Resort City**

A 12 Tin Yan Road, Tin Shui Wai  
 T (852) 2123 8888  
 W www.harbour-plaza.com/hprc



**Holiday Inn Golden Mile**

A 50 Nathan Road, Tsim Sha Tsui  
 T (852) 2369 3111 F (852) 2369 8016  
 W www.holidayinn.com/hongkong-gldn





**Hong Kong Disneyland Hotel**

A Hong Kong Disneyland Resort, Lantau Island  
 T (852) 183 0830 F (852) 183 0855  
 W www.hongkongdisneyland.com



**Hong Kong Gold Coast Hotel**

A 1 Castle Peak Road, Gold Coast  
 T (852) 2452 8888 F (852) 2440 7368  
 W www.goldcoasthotel.com.hk



**Hotel sáv Hong Kong**

A 83 Wuhu Street, Hunghom  
 T (852) 2275 8888 F (852) 2275 8999  
 W www.hotelsav.com



**Hullett House**

A 1881 Heritage, 2A Canton Road, Tsim Sha Tsui  
 T (852) 3988 0000  
 W www.hulletthouse.com



**Hong Kong SkyCity Marriott Hotel**

A 1 Sky City Road East, Hong Kong International Airport, Lantau  
 T (852) 3969 1888 F (852) 3969 2288  
 W www.skycitymarriott.com



**Hotel Bonaparte by Rhombus**

A 11 Morrison Hill Road, Wan Chai  
 T (852) 3518 6688 F (852) 3518 6699  
 W www.hotelbonaparte.com.hk



**Hyatt Regency Hong Kong, Sha Tin**

A 18 Chak Cheung Street, Sha Tin  
 T (852) 3723 1234 F (852) 3723 1235  
 W www.hongkongshatin.regency.hyatt.com



**Hyatt Regency Hong Kong, Tsim Sha Tsui**

A 18 Hanoi Road, Tsim Sha Tsui  
 T (852) 2311 1234 F (852) 3721 1235  
 W www.hongkong.tsimshatsui.hyatt.com



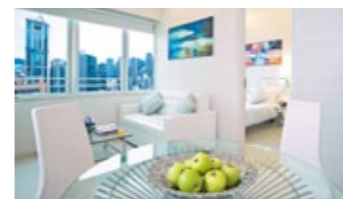
**Hotel ICON**

A 17 Science Museum Road, Tsim Sha Tsui East  
 T (852) 3400 1000 F (852) 3400 1001  
 W www.hotel-icon.com



**Hotel Jen Hong Kong**

A 508 Queen's Road West, Western District  
 T (852) 2974 1234 F (852) 2974 0333  
 W www.hoteljen.com



**iclub Sheung Wan Hotel**

A 138 Bonham Strand, Sheung Wan  
 T (852) 3963 6288 F (852) 3963 6299  
 W www.iclub-hotels.com



**InterContinental Grand Stanford Hong Kong**

A 70 Mody Road, Tsim Sha Tsui East  
 T (852) 2721 5161 F (852) 2732 2233  
 W www.hongkong.intercontinental.com



**Hotel Madera Hollywood**

A 53-55 Hollywood Street, Central, Hong Kong  
 T (852) 3913 2888 F (852) 3913 2800  
 W www.maderagroup.com/hollywood



**Hotel Panorama by Rhombus**

A 8A Hart Avenue, Tsim Sha Tsui  
 T (852) 3550 0333 F (852) 3550 0288  
 W www.hotelpanorama.com.hk



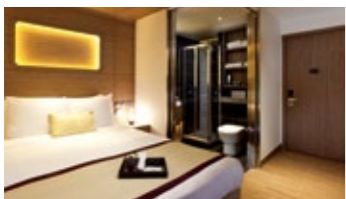
**InterContinental Hong Kong**

A 18 Salisbury Road, Tsim Sha Tsui  
 T (852) 2721 1211 F (852) 2739 4546  
 W www.hongkong-ic.intercontinental.com



**Island Shangri-La, Hong Kong**

A Pacific Place, Supreme Court Road, Central  
 T (852) 2877 3838 F (852) 2521 8742  
 W www.shangri-la.com/island



**Hotel Pennington by Rhombus**

A 13-15 Pennington Street, Causeway Bay  
 T (852) 3970 0688 F (852) 3970 0699  
 W www.hotelpennington.com.hk



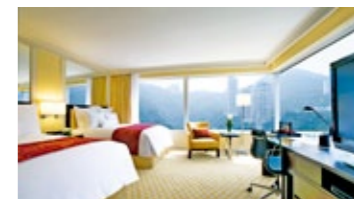
**Hotel Pravo Hong Kong**

A No.10 Peking Road, Tsim Sha Tsui  
 T (852) 3188 7888  
 W www.citadines.com/china/hong-kong/hotel-pravo-hong-kong



**J Plus Hotel by YOO**

A 1-5 Irving Street, Causeway Bay  
 T (852) 3196 0000 F (852) 3196 9901  
 W www.jplushongkong.com



**JW Marriott Hotel Hong Kong**

A Pacific Place, 88 Queensway  
 T (852) 2810 8366 F (852) 2845 0737  
 W www.jwmarriotthongkong.com





**Kowloon Shangri-La, Hong Kong**

A 64 Mody Road, Tsim Sha Tsui East  
 T (852) 2721 2111 F (852) 2723 8686  
 W www.shangri-la.com/kowloon



**L'hotel élan**

A 38 Chong Yip Street, Kwun Tong  
 T (852) 3968 8666 F (852) 3968 8333  
 W www.lhotelgroup.com/en/hotel/lhotel-elan/Home



**Panda Hotel**

A 3 Tsuen Wan Street, Tsuen Wan  
 T (852) 2409 1111 F (852) 2409 1818  
 W www.pandahotel.com.hk



**Prince Hotel**

A Harbour City, Tsim Sha Tsui  
 T (852) 2113 1888 F (852) 2113 0066  
 W www.marcopolohotels.com



**L'hotel Island South**

A 55 Wong Chuk Hang Road, Aberdeen  
 T (852) 3968 8838 F (852) 3968 8899  
 W www.lhotelgroup.com/en/hotel/lhotel-island-south/Home



**Lan Kwai Fong Hotel @ Kau U Fong**

A 3 Kau U Fong, Central  
 T (852) 2922 9922 F (852) 2922 9923  
 W www.lankwaifonghotel.com.hk



**Regal Airport Hotel**

A 9 Cheong Tat Road, Hong Kong International Airport, Chek Lap Kok  
 T (852) 2286 8888 F (852) 2286 8686  
 W www.regalhotel.com



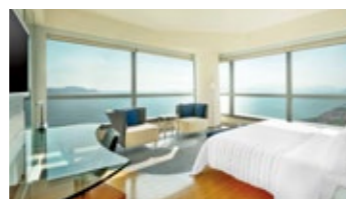
**Regal Hongkong Hotel**

A 88 Yee Wo Street, Causeway Bay  
 T (852) 2890 6633 F (852) 2881 0777  
 W www.regalhotel.com



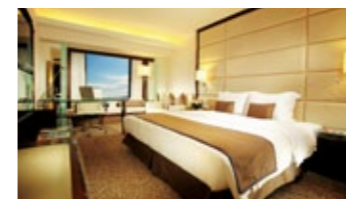
**Lanson Place Hotel, Hong Kong**

A 133 Leighton Road, Causeway Bay  
 T (852) 3477 6888 F (852) 3477 6999  
 W www.lansonplace.com



**Le Méridien Cyberport**

A 100 Cyberport Road  
 T (852) 2980 7788 F (852) 2980 7888  
 W www.lemeridien.com/HongKong



**Regal Kowloon Hotel**

A 71 Mody Road, Tsim Sha Tsui  
 T (852) 2313 8638 F (852) 2739 0670  
 W www.regalhotel.com



**Regal Oriental Hotel**

A 30-38 Sa Po Road, Kowloon City  
 T (852) 2718 0333 F (852) 2718 4111  
 W www.regalhotel.com



**Mandarin Oriental Hong Kong**

A 5 Connaught Road, Central  
 T (852) 2522 0111 F (852) 2810 6190  
 W www.mandarinoriental.com/hongkong



**Marco Polo Hongkong Hotel**

A Harbour City, Tsim Sha Tsui  
 T (852) 2113 0088 F (852) 2113 0011  
 W www.marcopolohotels.com



**Regal Riverside Hotel**

A 34-36 Tai Chung Kiu Road, Sha Tin  
 T (852) 2132 1111 F (852) 2648 0505  
 W www.regalhotel.com



**Rosedale Hotel Kowloon**

A 86 Tai Kok Tsui Road  
 T (852) 3919 8606 F (852) 3919 8600  
 W www.kowloon.rosedalehotels.com



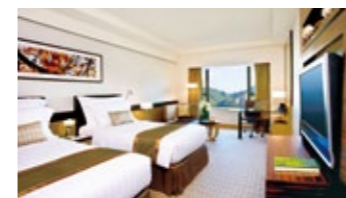
**Ovolo Aberdeen Harbour**

A 100 Shek Pai Wan Road, Aberdeen  
 T (852) 3728 1000 F (852) 3622 3030  
 W ovolohotels.com



**Ovolo Southside**

A 64 Wong Chuk Hang Road, Southside  
 T (852) 3460 8100 F (852) 3196 8899  
 W ovolohotels.com



**Royal Park Hotel**

A 8 Pak Hok Ting Street, Sha Tin  
 T (852) 2601 2111 F (852) 2601 3666  
 W www.royalpark.com.hk



**Royal Plaza Hotel**

A 193 Prince Edward Road West  
 T (852) 2928 8822 F (852) 2606 0088  
 W www.royalplaza.com.hk





帝景酒店  
ROYAL VIEW HOTEL

**Royal View Hotel**

A 353 Castle Peak Road, Ting Kau, Tsuen Wan  
T (852) 3716 2888 F (852) 3716 2999  
W www.royalview.com.hk



Sheraton  
HONG KONG  
HOTEL & TOWERS

**Sheraton Hong Kong Hotel & Towers**

A 20 Nathan Road, Tsim Sha Tsui  
T (852) 2369 1111 F (852) 2739 8707  
W www.sheratonhongkonghotel.com



THE PARK LANE  
HONG KONG  
柏寧酒店

**The Park Lane Hong Kong**

A 310 Gloucester Road, Causeway Bay  
T (852) 2293 8888 F (852) 2576 7853  
W www.parklane.com.hk



THE PENINSULA  
HONG KONG

**The Peninsula Hong Kong**

A Salisbury Road, Tsim Sha Tsui  
T (852) 2920 2888 F (852) 2722 4170  
W www.peninsula.com/hongkong



SOMERSET  
VICTORIA PARK  
HONG KONG

**Somerset Victoria Park Hong Kong**

A No.118 Electric Road, Causeway Bay  
T (852) 3653 8088  
W www.somerset.com/china/hong-kong/somerset-victoria-park-hong-kong



SORAVIT  
ON GRANVILLE ROAD  
南區嘉咸酒店

**Soravit on Granville**

A 29A Granville Road, Tsim Sha Tsui  
T (852) 2105 3888 F (852) 2105 3820  
W www.soravithotels.com



THE RITZ-CARLTON  
HONG KONG

**The Ritz-Carlton, Hong Kong**

A ICC Tower, 1 Austin Road West  
T (852) 2263 2263 F (852) 2263 2094  
W www.ritzcarlton.com/hongkong



THE ROYAL GARDEN  
KOWLOON, HONG KONG

**The Royal Garden**

A 69 Mody Road, Tsim Sha Tsui East  
T (852) 2721 5215 F (852) 2369 9976  
W www.rghk.com.hk



THE BAY BRIDGE

**The Bay Bridge Hong Kong Hotel & Serviced Apartments**

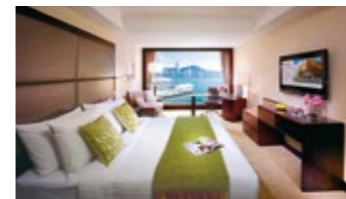
A 123 Castle Peak Road, Yau Kom Tau, Tsuen Wan  
T (852) 2945 1111 F (852) 2493 8033  
W www.baybridgehongkong.com



THE CHARTERHOUSE  
CAUSEWAY BAY HONG KONG  
兩層河利景酒店

**The Charterhouse Causeway Bay**

A 209-219 Wanchai Road  
T (852) 2591 0000 F (852) 2833 5888  
W www.charterhouse.com



The Royal Pacific  
Wanchai Towers  
Kowloon  
A member of Star Group of Hotels

**The Royal Pacific Hotel and Towers**

A 33 Canton Road, Tsim Sha Tsui  
T (852) 2736 1188 F (852) 2736 1212  
W www.royalpacific.com.hk



THE Stanley Oriental  
HOTEL

**The Stanley Oriental Hotel**

A 2/F, 90B Stanley Main Street, Stanley  
T (852) 2899 1688  
W www.stanleyorientalhotel.com.hk



九龍酒店  
THE KOWLOON HOTEL  
TSMHATSUI - HONG KONG

**The Kowloon Hotel**

A 19-21 Nathan Road, Tsim Sha Tsui  
T (852) 2929 2888 F (852) 2739 9811  
W www.harbour-plaza.com/klnh



THE LANDMARK  
MANDARIN ORIENTAL  
HONG KONG

**The Landmark Mandarin Oriental, Hong Kong**

A The Landmark, 15 Queen's Road Central, Central  
T (852) 2132 0188 F (852) 2132 0199  
W www.mandarinoriental.com/landmark



THE UPPERHOUSE

**The Upper House**

A Pacific Place, 88 Queensway, Admiralty  
T (852) 2918 1838 F (852) 3968 1200  
W www.upperhouse.com



TWO  
MACDONNELL ROAD

**Two MacDonnell Road**

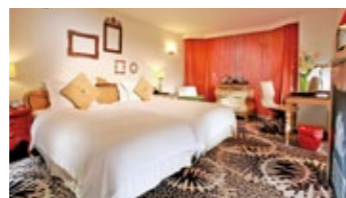
A 2 MacDonnell Road, Mid-Levels  
T (852) 2132 2132 F (852) 2131 1000  
W www.lansonplace.com



THE LANGHAM  
HONG KONG

**The Langham, Hong Kong**

A 8 Peking Road, Tsim Sha Tsui  
T (852) 2375 1133 F (852) 2375 6611  
W www.langhamhotels.com/hongkong



THE LUXE MANOR

**The Luxe Manor**

A 39 Kimberley Road, Tsim Sha Tsui  
T (852) 3763 8888 F (852) 3763 8899  
W www.theluxemanor.com



W  
HONG KONG

**W Hong Kong**

A 1 Austin Road West, Kowloon Station  
T (852) 3717 2222 F (852) 3717 2888  
W www.w-hongkong.com



XiHOTEL

**Xi Hotel**

A 7 Minden Avenue, Tsim Sha Tsui  
T (852) 2739 7777 F (852) 2739 3777  
W www.xihotel.com.hk



# HONG KONG

Hotel	No. of Rooms	Layout			Facilities						Tel.	District
		#SBD	TBD	DBD	📶	🏊	🏋️	🚌	🏢	🛀		
Citadines Mercer Hong Kong	55	*	*	*	*	*	*	*	*		2922 9988	Sheung Wan
Conrad Hong Kong	512	*	*	*	*	*	*	*	*	*	2521 3838	Admiralty
Courtyard by Marriott Hong Kong Hotel	245	*	*	*	*	*	*	*	*	*	3717 8888	Sai Wan
Crowne Plaza Hong Kong Causeway Bay	263	*	*	*	*	*	*	*	*	*	3980 3980	Causeway Bay
EAST, Hong Kong	345	*	*	*	*	*	*	*	*	*	3968 3968	Island East
Four Seasons Hotel Hong Kong	399	*	*	*	*	*	*	*	*	*	3196 8888	Central
Grand Hyatt Hong Kong	549	*	*	*	*	*	*	*	*	*	2588 1234	Wan Chai
Harbour Grand Hong Kong	828	*	*	*	*	*	*	*	*	*	2121 2688	North Point
Harbour Plaza North Point	669	*	*	*	*	*	*	*	*	*	2187 8888	Quarry Bay
Hotel Bonaparte by Rhombus	80	*	*	*	*	*	*	*	*	*	3518 6688	Wan Chai
Hotel Jen Hong Kong	283	*	*	*	*	*	*	*	*	*	2974 1234	Western District
Hotel Madera Hollywood	38	*	*	*	*	*	*	*	*	*	3913 2888	Central
Hotel Pennington by Rhombus	79	*	*	*	*	*	*	*	*	*	3970 0688	Causeway Bay
iclub Sheung Wan Hotel	248	*	*	*	*	*	*	*	*	*	3963 6100	Hong Kong
Island Shangri-La, Hong Kong	565	*	*	*	*	*	*	*	*	*	2877 3838	Central
J Plus Hotel by YOO	56	*	*	*	*	*	*	*	*	*	3196 9000	Causeway Bay
JW Marriott Hotel Hong Kong	602	*	*	*	*	*	*	*	*	*	2810 8366	Admiralty
L'hotel Island South	432	*	*	*	*	*	*	*	*	*	3968 8838	Southern District
Lan Kwai Fong Hotel @ Kau U Fong	162	*	*	*	*	*	*	*	*	*	2922 9922	Central
Lanson Place Hotel, Hong Kong	194	*	*	*	*	*	*	*	*	*	3477 6888	Causeway Bay
Le Méridien Cyberport	170	*	*	*	*	*	*	*	*	*	2980 7788	Pok Fu Lam
Mandarin Oriental, Hong Kong	501	*	*	*	*	*	*	*	*	*	2522 0111	Central
Ovolo Aberdeen Harbour	85	*	*	*	*	*	*	*	*	*	3728 1000	Aberdeen
Ovolo Southside	162	*	*	*	*	*	*	*	*	*	3460 8100	Southside
Regal Hongkong Hotel	482	*	*	*	*	*	*	*	*	*	2890 6633	Causeway Bay
Somerset Victoria Park Hong Kong	68	*	*	*	*	*	*	*	*	*	3653 8088	Causeway Bay
The Charterhouse Causeway Bay	294	*	*	*	*	*	*	*	*	*	2591 0000	Causeway Bay
The Landmark Mandarin Oriental, Hong Kong	109	*	*	*	*	*	*	*	*	*	2132 0188	Central
The Park Lane Hong Kong	805	*	*	*	*	*	*	*	*	*	2293 8888	Causeway Bay
The Stanley Oriental Hotel	9	*	*	*	*	*	*	*	*	*	2899 1688	Stanley
The Upper House	117	*	*	*	*	*	*	*	*	*	2918 1838	Admiralty
Two MacDonnell Road	213	*	*	*	*	*	*	*	*	*	2132 2132	Mid-Levels

# KOWLOON

Hotel	No. of Rooms	Layout			Facilities						Tel.	District
		#SBD	TBD	DBD	📶	🏊	🏋️	🚌	🏢	🛀		
Attitude on Granville	81	*	*	*	*	*	*	*	*	*	2105 3888	Tsim Sha Tsui
Cordis, Hong Kong	664	*	*	*	*	*	*	*	*	*	3552 3388	Mong Kok
Gateway Hotel	400	*	*	*	*	*	*	*	*	*	2113 0888	Tsim Sha Tsui
Harbour Grand Kowloon	554	*	*	*	*	*	*	*	*	*	2621 3188	Hung Hom
Harbour Plaza 8 Degrees	702	*	*	*	*	*	*	*	*	*	3900 3000	To Kwa Wan
Harbour Plaza Metropolis	819	*	*	*	*	*	*	*	*	*	3160 6822	Hung Hom
Holiday Inn Golden Mile	621	*	*	*	*	*	*	*	*	*	2369 3111	Tsim Sha Tsui
Hotel Icon	262	*	*	*	*	*	*	*	*	*	3400 1000	Tsim Sha Tsui East
Hotel Panorama by Rhombus	324	*	*	*	*	*	*	*	*	*	3550 0388	Tsim Sha Tsui
Hotel Pravo Hong Kong	92	*	*	*	*	*	*	*	*	*	3188 7888	Tsim Sha Tsui
Hotel sáv	388	*	*	*	*	*	*	*	*	*	2275 8888	Hung Hom
Hullett House	10	*	*	*	*	*	*	*	*	*	3988 0000	Tsim Sha Tsui
Hyatt Regency Hong Kong, Tsim Sha Tsui	381	*	*	*	*	*	*	*	*	*	2311 1234	Tsim Sha Tsui
InterContinental Grand Stanford Hong Kong	579	*	*	*	*	*	*	*	*	*	2721 5161	Tsim Sha Tsui East
InterContinental Hong Kong	503	*	*	*	*	*	*	*	*	*	2721 1211	Tsim Sha Tsui
Kowloon Shangri-La, Hong Kong	700	*	*	*	*	*	*	*	*	*	2721 2111	Tsim Sha Tsui East
L'hotel élan	254	*	*	*	*	*	*	*	*	*	3968 8666	Kwun Tong
Marco Polo Hongkong Hotel	665	*	*	*	*	*	*	*	*	*	2113 0088	Tsim Sha Tsui
Prince Hotel	394	*	*	*	*	*	*	*	*	*	2113 1888	Tsim Sha Tsui
Regal Kowloon Hotel	600	*	*	*	*	*	*	*	*	*	2313 8638	Tsim Sha Tsui
Regal Oriental Hotel	494	*	*	*	*	*	*	*	*	*	2718 0333	Kowloon City
Rosedale Hotel Kowloon	435	*	*	*	*	*	*	*	*	*	3919 8606	Tai Kok Tsui
Royal Plaza Hotel	699	*	*	*	*	*	*	*	*	*	2928 8822	Mong Kok
Sheraton Hog Kong Hotel & Towers	782	*	*	*	*	*	*	*	*	*	2369 1111	Tsim Sha Tsui
Soravit on Granville	76	*	*	*	*	*	*	*	*	*	2105 3888	Tsim Sha Tsui
The Kowloon Hotel	736	*	*	*	*	*	*	*	*	*	2929 2888	Tsim Sha Tsui
The Langham, Hong Kong	498	*	*	*	*	*	*	*	*	*	2375 1133	Tsim Sha Tsui
The Luxe Manor	159	*	*	*	*	*	*	*	*	*	3763 8888	Tsim Sha Tsui
The Peninsula Hong Kong	300	*	*	*	*	*	*	*	*	*	2920 2888	Tsim Sha Tsui
The Ritz-Carlton, Hong Kong	312	*	*	*	*	*	*	*	*	*	2263 2263	West Kowloon
The Royal Garden	417	*	*	*	*	*	*	*	*	*	2721 5215	Tsim Sha Tsui East
The Royal Pacific Hotel and Towers	673	*	*	*	*	*	*	*	*	*	2736 1188	Tsim Sha Tsui
W Hong Kong	393	*	*	*	*	*	*	*	*	*	3717 2222	West Kowloon
Xi Hotel	64	*	*	*	*	*	*	*	*	*	2739 7777	Tsim Sha Tsui



## NEW TERRITORIES

Hotel	No. of Rooms	Layout			Facilities						Tel.	District
		#SBD	TBD	DBD	📶	♨️	🏊	🚗	🏢	🧖		
Auberge Discovery Bay	325	*	*	*	*	*	*	*	*	*	2295 8288	Lantau Island
Crowne Plaza Hong Kong Kowloon East	359	*	*	*	*	*	*	*	*	*	3983 0388	Tseung Kwan O
Disney's Hollywood Hotel	600	*	*	*	*	*	*	*	*	*	3510 5000	Lantau Island
Harbour Plaza Resort City	1102	*	*	*	*	*	*	*	*	*	2123 8888	Tin Shui Wai
Hong Kong Disneyland Hotel	400	*	*	*	*	*	*	*	*	*	3510 6000	Lantau Island
Hong Kong Gold Coast Hotel	453	*	*	*	*	*	*	*	*	*	2452 8888	Castle Peak Bay
Hong Kong SkyCity Marriott Hotel	658	*	*	*	*	*	*	*	*	*	3969 1888	Lantau Island
Hyatt Regency Hong Kong, Sha Tin	559	*	*	*	*	*	*	*	*	*	3723 1234	Sha Tin
Panda Hotel	1026	*	*	*	*	*	*	*	*	*	2409 1111	Tsuen Wan
Regal Airport Hotel	1171	*	*	*	*	*	*	*	*	*	2286 8888	Chek Lap Kok
Regal Riverside Hotel	1138	*	*	*	*	*	*	*	*	*	2132 1213	Sha Tin
Royal Park Hotel	443	*	*	*	*	*	*	*	*	*	2601 2111	Sha Tin
Royal View Hotel	688	*	*	*	*	*	*	*	*	*	3716 2888	Tsuen Wan
The Bay Bridge Hong Kong Hotel & Serviced Apartments	436	*	*	*	*	*	*	*	*	*	2945 1111	Tsuen Wan





