

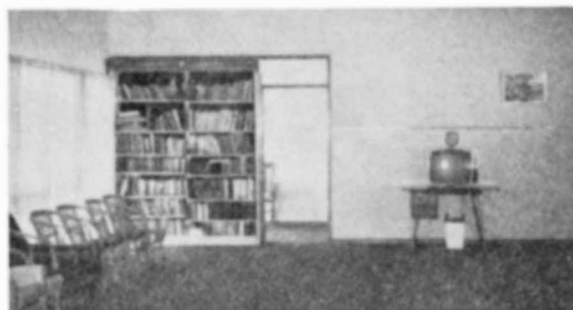
# KIRINARI—A PLACE OF LEARNING

“A bold experiment in the assimilation and education of young Australian Aborigines” is how Kirinari hostel has been described. *Kirinari* is an Aboriginal word meaning “a place of learning”.

Located in the Sydney suburb of Sylvania the hostel caters for Aboriginal boys from all over the State studying at secondary schools and working in the St George and Sutherland districts. Female students are at the moment placed in private board pending the establishment of a girls hostel at Manly. There is a hostel at Burwood in Sydney for working girls.

Boys come from the country to Kirinari to do their high school studies. Because the government covers much of the costs involved little or no expense is placed on the parents.

The hostel has met with outstanding success in educating boys who learn the skills and things necessary to adapt to life in white society. Last year six Kirinari students sat for the School Certificate examination and all six passed. This



*The lounge room at Kirinari, Sylvania*

year Kirinari has twenty-five students attending two local schools and eight boys who are holding down full-time jobs. One student is sitting for the Higher School Certificate and two are in 5th form. Of the nine boys sitting for the School Certificate this year, eight will be taking full-time employment next year. Kirinari's ex-students include apprentices in many fields, a fully trained PMG

*Some of the students at Kirinari, Sylvania*

