



RESSENCE SERIES ONE

Owner's Manual

Certificate of Guarantee

Your RESSENCE watch is insured under a limited guarantee against any manufacturing defects for two years from the date of purchase indicated on page 2 of the Owner's Manual. Only your retailer and the official distributor for your country are authorised to accept your watch for service. Please consult the list of authorised after sales support. Your watch has been sealed. If at the time of servicing the seals are found to be broken, the guarantee is automatically void. For further information, please contact RESSENCE bvba by e-mail.

guarantee@ressence.be

Your RESSENCE watch comes with a „bubble certificate“. The bubble code you will find on the guarantee card is based on natural chaos and is unreproducible. To check the authenticity of your watch, you need to connect to the internet.

www.prooftag.com

Key in J10N..... followed by the registration number printed on your guarantee card. Click on „Search“ A page containing authenticity information will appear together with the scanned bubble code. You now need to compare the bubble code on your card with the scanned image on the screen to authenticate your watch.



Technical parameters

Functions: 12h/24h, Hours, Minutes, Seconds.

Movement: Automatic, customised 2824-2 Swiss caliber.

Module: Patented system designed & developed by Ressence, Aluminium or Titanium frame and dial-satellites, Triple bi-axial off-centred integrated & flush mounted orbiting satellites. (100+ parts)

Case: Stainless steel, diameter 42mm ex-crown.

Glass: Twin 3D sapphire with anti-reflective coating inside.

Crown: at 3 or 9 o'clock. Adjustment system in the crown. (14 parts)

Bracelets: Interchangeable system with Torx T4.

Weight: approx. 115 grams.

53 jewels in total.

The watch is water-resistant but not waterproof.

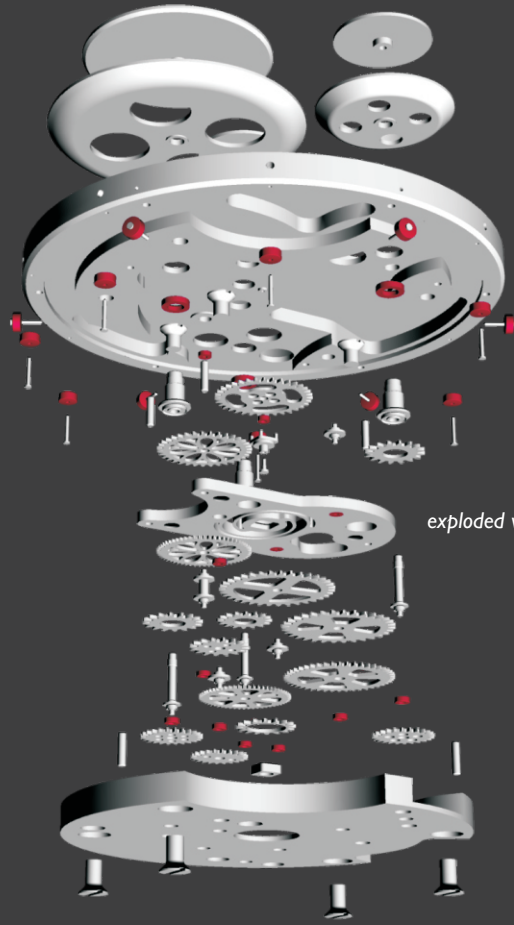


The RESSENCE Dial



The time is displayed by a flush mounted revolving dial that embodies all the graphical elements in one plane 0.2mm under the 3D shaped sapphire glass. The revolving dial plate points out the minutes, the sub-dials inside the main dial plate indicate the hours, seconds and 24h. The sub-dials orbit a virtual axis similar to the moons around Saturn. Graphically, the time seems to be displayed on the outer surface of the watch.





exploded view of the time module



Operating Instructions

Dial

The watch you now own has a unique time display mechanism. Unlike traditional watches, the time representation is generated by a set of disks and rings. The so-called time module (or module) is an independent mechanical unit that generates all the functions independently. From the movement is taken the seconds and the minutes. The other functions as well as the orbiting movement of the rings are generated by the module.

Crown I

The crown concept is very different to normal watches. Winding will require more force than normally expected from a mechanical watch. This comes from the gear transmission inside the crown. Turning the crown once will generate about three turns for the spring of the automatic movement.

Buckle

If your watch is equipped with the deployant buckle, to open the buckle, push both side buttons.

Service

RESSENCE advises you to have your watch checked every two years by an appointed after sales agent to guarantee its keeping perfect time.

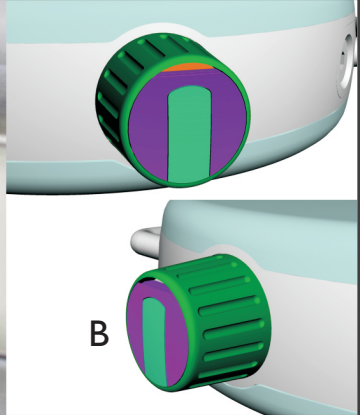
YOUR WATCH SHOULD BE PROTECTED FROM SHOCKS



Operating Instructions

normal crown position in time-adjustment mode

A



Operating Instructions

Crown 2

To adjust your watch

A physical requirement for adjusting a RESENCE is to have at least one nail... Please take a close look at the crown (flat side).You will distinguish two parts (on this drawing the purple and turquoise parts) plus a slot that has an green or orange base. In the closed position, turning the crown (green part) will rewind the watch. The crown cannot be pulled out as a whole. To adjust the time, catch the slit on top of the purple part with your nail (you need to push your nail into the slot). Once you snap the slit with your nail, you pull the purple part out. The turquoise part can only slide out 1mm. Do not force it! Once it is in open position you can adjust the time by turning the crown (green part). Do not try to turn the purple or the turquoise part, they do not turn. The second hand should have stopped by now. (A) To put the watch back to normal function, push back the purple and turquoise part.You should hear / feel a click and both parts should be well positioned and flush with the crown. (B) If well pushed back, the second hand will start running again after 2 to 5 seconds.



Operating Instructions

Changing the straps yourself

The strap interface concept allows you to change the strap yourself. Four screws on the side of the watch hold the premounted strap lugs.

CAUTION:

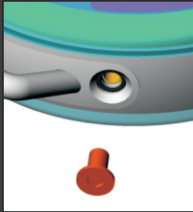
1. When changing the strap interfaces, do not dismount both sides at once. First unscrew the strap on one side and directly mount the new strap interface before detaching the other side. The reason is that the screws also hold other parts inside. Do not forget to put back the joints. 2. when refitting the new strap, consider the outer and inner side of the strap according to the lugs position.



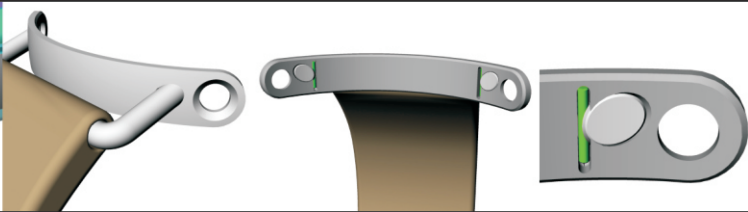
Operating Instructions

Changing the straps yourself

step 1



step 2

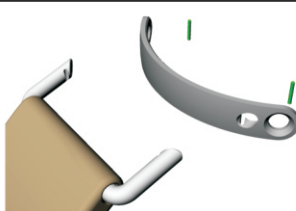


1. unscrew the side screws (torx) (step 1)
2. unscrew both screws and gently take out the interface (step 2)
3. note the green pin

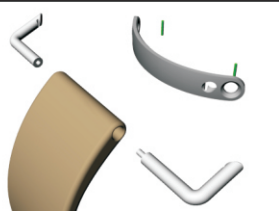
step 3



step 4



step 5



4. push in the lugs to unlock the pin (caution, the pins are very small) (step 3 & 4)
5. unscrew both lug sides (step 5)



Maintenance & Service

This page is reserved for servicing information.
Please keep the log book of your watch updated.





WWW.RESENCE.EU

RESENCE bvba, Meirbrug 1, 2000 Antwerp, Belgium

Resence reserves the right to modify models or technical features at any time and without prior warning. All rights reserved.
All images are computer generated based on the real 3D model. Colours, finishes and other aspects may differ from reality due to technical interface aspects.