



# HOW TO DO THE NT



## TOO FAR?

In the Territory the journey is half the adventure. Whether it's on a train, plane, an air-conditioned tour bus or in a hire car, you can arrive fully refreshed and ready to enjoy your choice of amazing activities and sights.

On board The Ghan

## TOO HOT?

If you need to cool down in the NT you're never too far from natural swimming holes, river and harbour cruises or a relaxing swimming pool.



Wildman Wilderness Lodge  
Kakadu & surrounds

## TOO RUGGED?

Outback doesn't have to mean roughing it. You can do the NT in style whether you're in the city or in the heart of the outback.



Bamurru Plains (luxury lodge)  
Kakadu & surrounds

## TOO DRY?

Did you know you can swim all year round in waterholes only minutes from Alice Springs?



Ormiston Gorge, Alice Springs



Yellow Water Cruise, Kakadu

# TOO... DAY!

Having grown up in the Northern Territory, it's easy for me to reel off reasons why you should experience it for yourself, but throughout my travels I am continually amazed at how many people say to me, "I've always wanted to go to the NT; I'll get there one day."

When I ask, "Why not today?" the same excuses come up time and time again. When you delve a little deeper into some of the reasons not to go, most people are actually surprised at how accessible and easy it is to book a flight to Alice Springs, a cruise up Nitmiluk Gorge or a train ride on the Ghan to Darwin.

**“ STOP THINKING ONE DAY & START THINKING TODAY ”**

LYNTON TAPP  
NT CONTESTANT

MASTERCHEF AUSTRALIA 2013 – RUNNER UP

I challenge you to take a few minutes to read this "How to Do the NT" guide and see if you'll change your mind from 'One Day' to 'Today.' If you do decide to travel, look me up and I'll show you why you should 'Do the NT.'



[www.facebook.com/lyntontappmasterchef](http://www.facebook.com/lyntontappmasterchef)

 **tripadvisor**<sup>®</sup>

READ ON FOR TIPS AND REVIEWS FROM TRIPADVISOR TRAVELLERS

## TOO WET?

Afternoon rains of the NT tropical summer bring unique and amazing wildlife, dramatic waterfalls, cooler temperatures and access to places you'll never see if the rivers don't flow.



## TOO MUCH?

Many regions make up the NT, each offering a different holiday experience. Do one or do them all, you'll get more than you bargain for with a holiday to the NT.



Larapinta Trail, Alice Springs

# DO THE TOP END EXOTIC & TROPIC

There are four distinct regions in the Top End of the Territory that offer amazing holiday experiences in their own right.

Soak up metropolitan **Darwin** by doing the markets at sunset, watching movies under the stars, cruising the harbour or taking a day trip out to **Litchfield National Park**; nature's very own water theme park.

60% of Aussie travellers believe **Kakadu** is one of Australia's best kept travel secrets. Brimming with native wildlife, it's a utopia for any animal lover. And it's just three hours' drive from Darwin.

The outback meets the tropics in **Katherine**. Fish it, camp it, hike it, swim it, canoe it - your choices are endless. If you're after a softer adventure, take in Nitmiluk Gorge aboard a dinner cruise and stay in five-star luxury.

**Arnhem Land** is one of the world's last unspoiled areas. Spearcatch a fish for lunch, learn Aboriginal sign language, listen to the Yidaki (Didgeridoo) in the lands where it was first invented, and retire for the evening at accommodation to suit all tastes.

Do one region, or do them all. It's up to you.



## PLANE OR TRAIN

All major Australian airlines fly in to Darwin. Domestic flights arrive daily and it's just four hours from Sydney. We recommend flying to Nhulunbuy in Arnhem Land, just a short 90 minute flight from Darwin. You can also link to the Top End via the Great Southern Railway Network.

## DRIVE

Hire a car or campervan to get in and around the main town centres and drive between regions. You can easily reach Litchfield, Kakadu and Katherine in just a few hours, or you may like to experience one of the NT's many iconic drive holidays.

## CRUISE

A range of cruise lines visit Darwin throughout the year. Why not explore the Top End before or after your cruise?

## TOURS

If you want to take a back seat (literally), there are plenty of tours to show you the best of the NT over a day, a week, or longer.

## FIND OUT MORE

Tourism Top End (Darwin)  
1300 138 886 [www.tourismtopend.com.au](http://www.tourismtopend.com.au)  
Katherine Visitor Information Centre  
1800 653 142 [www.visitkatherine.com.au](http://www.visitkatherine.com.au)





Mindil Beach Sunset Markets

# DIVE INTO DARWIN & LITCHFIELD

As the Northern Territory's thriving capital, Darwin attracts travellers from all around the globe for its outdoor tropical lifestyle.

With waterfront dining, crocodile adventures, rich historical experiences, and access to the Tiwi Islands all within a few minutes of the city centre, there's enough to do to fill a weekend or a week.

Litchfield National Park is just a short 90-minute drive from Darwin and is a favourite for the locals year-round. It's an easy day trip but with the range of swimming spots and waterfalls, it's well worth staying overnight in one of the nearby accommodation options.

 **DARWIN**



**JUMPING CROCS**  
40 mins fr Darwin

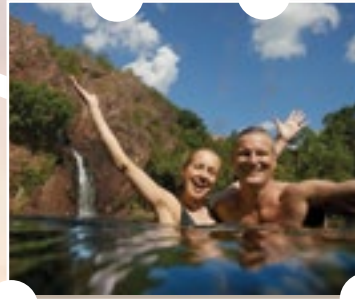
**LITCHFIELD NATIONAL PARK**

**BULEY ROCK HOLE**

**FLORENCE FALLS**

1.5hrs fr Darwin

**WANGI FALLS**

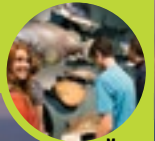


**TOLMER FALLS**

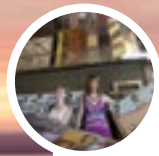
**MAGNETIC TERMITE MOUNDS**

 **tripadvisor®**

"The Museum & Art Gallery is brilliant. I was not expecting to be so impressed. It is really interesting - WW2, Cyclone Tracy, Sweetheart (a HUGE crocodile)" Kateoz, New York City, NY (19 Feb, 2008)



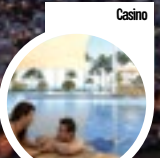
**Museum & Art Gallery**



**Ferry to Tiwi Islands**



**Cage of Death**



**Casino**



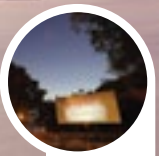
**Mindil Beach Markets**



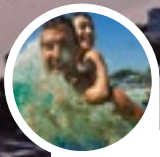
**Defence of Darwin Experience**



**Cruise Terminal**



**Deck chair cinema**



**Wave Pool**



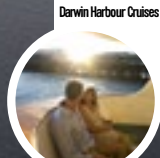
**Convention Centre**



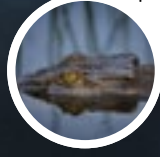
**Waterfront dining**



**To Territory Wildlife Park**



**Darwin Harbour Cruises**



**To Crocodilus Park & airport**

# KAKADU... UNVEILED

Kakadu offers you an experience that you'll want to stay for longer and see more, with so much to uncover in this spectacular national park.

Kakadu National Park is a natural wonderland; home to hundreds of different bird, animal and plant species.

Discover Australia's ancient indigenous culture with rock art that's around 20,000 years old, or soak up the views of the waterfalls and take a dip in nature's own infinity pool at Gunlom.

To Davidson's Arnhem Land Safaris

BAMURRU PLAINS (LUXURY LODGE)



WILDMAN WILDERNESS LODGE



AURORA RESORT, PARK PASS & FUEL STOP

BOWALI KAKADU VISITOR CENTRE

UBIRR LOOKOUT

JABIRU

3hrs fr Darwin  
MERCURE KAKADU CROCODILE HOTEL  
KAKADU LODGE  
OTHER ACCOMMODATION  
JABIRU SHOPPING CENTRE



NOURLANGIE ROCK ART



YELLOW WATER CRUISE  
GAGUDJU LODGE COOINDA & CULTURAL CENTRE



40 mins fr Bowali

JIM JIM FALLS



1.5hrs fr Yellow Waters

TWIN FALLS



1.5hrs fr Yellow Water

MAGUK WATERHOLE & FALLS



PINE CREEK ACCOMMODATION & CAMPING

2.5hrs fr Darwin

GUNLOM PLUNGE POOL & FALLS

2hrs fr Yellow Waters

3.5hrs fr Darwin



To Katherine & Katherine Gorge, Nitmiluk National Park

tripadvisor®

"I visited Kakadu Buffalo Farm when I went on the Aboriginal Animal Tracks Tour. A great tour learning about and collecting bush tucker, learning about culture and finishing with bush tucker cooked on the fire"  
Linarosa, Cessnock, Australia  
(10 August, 2013)

# DO KATHERINE & NITMILUK NATIONAL PARK

Katherine and Nitmiluk National Park will leave you spoilt for choice in the region where the tropics meet the outback.

Nature comes alive at Katherine Gorge as you cruise, canoe or fly along the Gorge by helicopter. Take a more challenging route and hike the Jatbula Trail, or soak it up in luxury at Cicada Lodge.

Learn from the land at Tom Curtain's Katherine Outback Experience or get a hands-on perspective of indigenous culture with the Top Didj Aboriginal Cultural Experience; both just minutes from the centre of Katherine.

To Darwin & Kakadu Turn Off

EDITH FALLS (LELYN) & WATERHOLE



3.5hrs fr Darwin

**KATHERINE**  
ACCOMMODATION, SHOPPING  
VISITOR INFORMATION



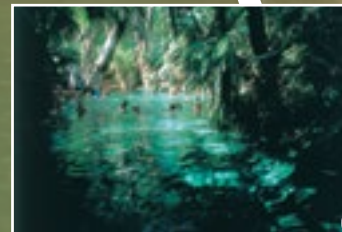
**KATHERINE GORGE, NITMILUK NATIONAL PARK & CICADA LUXURY LODGE**

30mins fr Katherine



CUTTA CUTTA CAVES

To Nhulunbuy



**MATARANKA THERMAL POOLS**

1hr fr Katherine

To Daly Waters Historic Pub

 **tripadvisor®**

"Serenity! Do not miss [Bitter Springs] if you're on the highway between Darwin and Alice Springs. Very relaxing, beautiful and pleasant place with the sounds of nature" avaria-avaria, Switzerland (09 Oct, 2013)

## OUTBACK LUXE

Cicada Lodge, Nitmiluk National Park. One of the many luxe accommodation options available in the NT.



## DRIVE ON TO DALY

The historic pub at Daly Waters offers an experience worthy of a cold beer.







### WILIGI BEACH CAMPING OUTSTATION

1hr charter plane or 6hr 4WD access w/ permit fr Darwin



### MANINGRIDA ARTS & CULTURE FISHING & CAMPING



### BREMER ISLAND / BANU BANU RETREAT

1hr boat fr Nhulunbuy



### NHULUNBUY GOVE AIRPORT

### DAVIDSON'S ARNHEM LAND SAFARIS



To Jabiru Kakadu



### YIRRKALA ARTS CENTRE

< Katherine 700km Nhulunbuy >  
Central Arnhem Highway

### BAWAKA CULTURAL TOURISM EXPERIENCE



2hrs Tour Guide 4WD fr Nhulunbuy

# DO ARNHEM LAND

Considered one of Australia's last unspoilt areas, Arnhem Land is waiting to be discovered.

Stay at an eco-wilderness island retreat, take a chartered fishing trip, go on a four-wheel drive adventure or just relax on one of the region's white sandy beaches. There's a new experience around every headland, on every beach and down every trail.



### GROOTE EYLANDT ↘

## NEW EXPERIENCES

Relaxation, arts, culture, fishing, camping and unique food. Arnhem Land offers more than you expect.



## RICH CULTURE

Arnhem Land is home to a unique indigenous culture that is perfectly interwoven into the experiences available.



# DO THE RED CENTRE A HOLIDAY IN THE HEART

Be honest. A trip to the Red Centre is on your bucket list, but you're still not quite sure when you'll go...

Go now!

It's around three hours to fly from the east and south coast, so you can do it in a weekend or a week, and explore the different regions that make up the heart of Australia.

Every visitor to **Uluru** (Ayers Rock) will attest that pictures just don't do it justice. It's a region full of majesty and other natural wonders, with **Kata Tjuta (the Olgas)** neighbouring Uluru and **Kings Canyon** a few hours' drive away.

**Alice Springs** epitomises the Australian outback character, with some unexpected surprises. It's your basecamp for adventure, with waterholes, biking and hiking trails, historic and wildlife centres and four-wheel driving all within easy access.

Nature's playground is a half-day drive from Alice Springs at the **Karlu Karlu (Devils Marbles)**, just south of Tennant Creek. The town of **Tennant Creek** offers travellers history, arts and outback experiences and is a natural stop as you drive the Explorer's Way.



## PLANE OR TRAIN

More airlines than ever are flying in to the Centre's main ports of Alice Springs and Uluru, with flights also available between the two. You can also link to the Alice via the Great Southern Railway Network.

## DRIVE

Hire a car or campervan to get in and around the main town centres and drive between regions. Drive the Red Centre Way and experience the spectacular West MacDonnell Ranges as you drive between Alice Springs and Uluru.

## TOURS

If you want to take a back seat (literally), there are plenty of tours to show you the best of the NT over a day, a week, or longer.

## FIND OUT MORE

Tourism Central Australia (Alice Springs)  
1800 645 199 [www.discovercentralaustralia.com](http://www.discovercentralaustralia.com)

Parks Australia  
[parksaustralia.gov.au](http://parksaustralia.gov.au)

Tennant Creek Visitor Information Centre  
08 8962 1281 [www.barklytourism.com.au](http://www.barklytourism.com.au)

Voyages Travel Centre (Ayers Rock Resort)  
1300 134 044 [www.voyages.com.au](http://www.voyages.com.au)





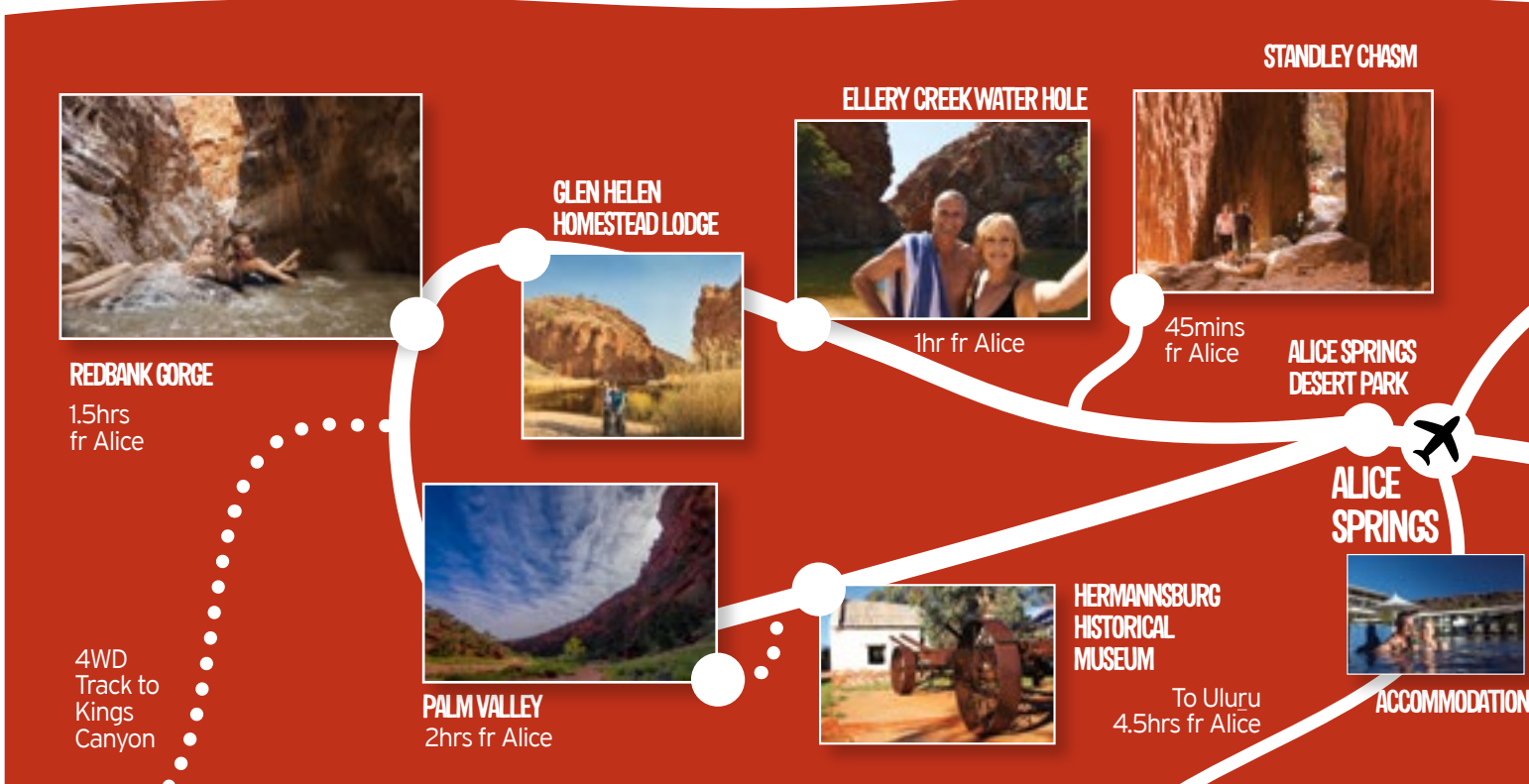
Uluru Camel Tours

# AROUND A TOWN LIKE ALICE

Known as Australia's outback pioneering town, visitors to Alice Springs are surprised to discover its underground café culture, contemporary art scene and laid-back lifestyle - though there's still plenty to keep the history buffs enthralled and satisfy the outdoor adventure enthusiasts.



**tripadvisor®**  
 "Definitely take some extra time in Alice Springs . . . It's a jewel of Central Australia! If Summer, bring your bathers for a cold swim in Ellery Creek or Ormiston Gorge" Adam\_in\_Oz, Alice Springs (15 Jan, 2014)



# TENNANT CREEK & DEVILS MARBLES

## BATTERY HILL EXPERIENCE & VISITOR INFORMATION CENTRE



## TENNANT CREEK TOWN ACCOMMODATION

5hrs fr Alice

To Daly Waters Historic Pub  
5hrs fr Tennant

## NYINKKA NYUNYU ABORIGINAL ART & CULTURE CENTRE



## KELLY'S RANCH



## KARLU KARLU (DEVILS MARBLES)

4hrs fr Alice



## WAUCHOPE HOTEL



## BARROW CREEK HISTORIC TELEGRAPH STATION

The historic town of Tennant Creek is an essential stopover as you drive the Explorer's Way.

Its range of accommodation options make it the perfect base for exploring the nearby Karlu Karlu (Devils Marbles), Davenport Ranges National Park or the many experiences within the town centre.

## DEVILS BY NIGHT

Visit the Devils Marbles at twilight for a five million star experience.



## AILERON



## GEM TREE FOSSICKING

1 3/4 hrs fr Alice

## EMILY & JESSIE GAPS ROCKART

## TREPHINA GEORGE

## OLD AMBALINDUM HOMESTEAD

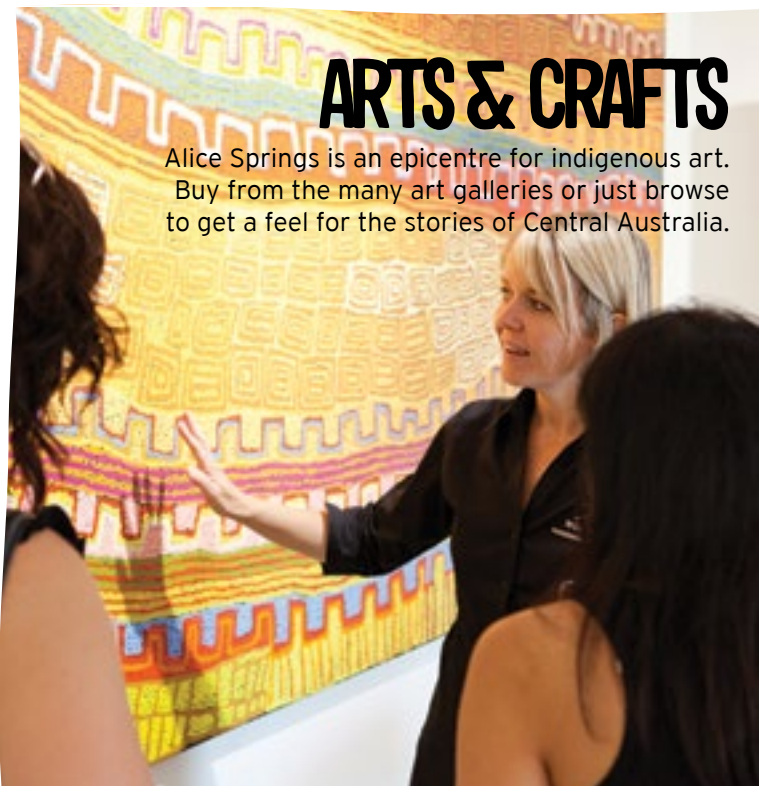
## ROSS RIVER RESORT

1 1/4hrs fr Alice



## ARTS & CRAFTS

Alice Springs is an epicentre for indigenous art. Buy from the many art galleries or just browse to get a feel for the stories of Central Australia.



# DO ULURU, KATA TJUTA & KINGS CANYON



VALLEY OF THE WINDS WALK

KATA TJUTA  
30 mins  
fr Uluru

WALPA  
GORGE WALK

ULURU  
(AYERS ROCK)

AIRPORT  
15 mins  
fr resort

AYERS  
ROCK  
RESORT

MT CONNER  
LOOKOUT



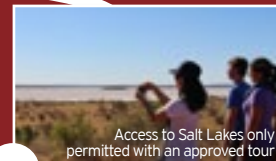
LONGITUDE 131°

KINGS CANYON RESORT

KINGS  
CANYON  
RIM WALK

KINGS CREEK STATION  
ACCOMMODATION

SALT LAKES LOOKOUT



Access to Salt Lakes only  
permitted with an approved tour

To Alice Springs

To Alice Springs  
4.5hrs  
fr Uluru

The Uluru region is like the land of the giants, with the sheer size of its natural attractions guaranteed to leave you speechless.

As the spiritual heart of Australia, Uluru (Ayers Rock) and Kata Tjuta (the Olgas) have a strong cultural history engrained in each experience. Fill your days cycling around the base, exploring it on foot with an indigenous guide and learning traditional dot painting, then unwind at your accommodation with views of the magnificent Uluru.

A worthy detour in the region is Kings Canyon, the highlight of Watarrka National Park. Challenge yourself on the Rim Walk to take in the views or enjoy quad-biking or camel riding at the nearby Kings Creek Station.



## UNFORGETTABLE

Dine under the stars with Uluru as your backdrop.

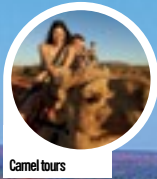


## LIVE LIKE KINGS

Up close and in comfort  
at Kings Canyon Resort.



# DO MORE, DO ULURU



Camel tours



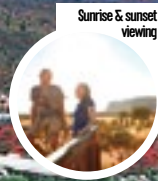
Harley Rides



Uluru base walks & cycling



Sounds of silence dinner



Sunrise & sunset viewing



To Kata Tjuta



Free Indigenous activities



Bars & restaurants



Indigenous dance show



Astronomy



"I thought I was going to see a red rock in the middle of nowhere, so imagine my surprise when it was way more than this... the Mala walk was great. Easy to do... would highly recommend anyone to do this" SisterPurple1708, Brisbane (25 June, 2013)

# DO UNIQUE, DO QUIRKY, DO EVENTS NT STYLE

The map shows the Northern Territory divided into regions: Darwin, Kakadu National Park, Arnhem Land, Katherine, Tennant Creek, and Alice Springs. Callouts with photos link to specific events: Darwin Lions Beercan Regatta, Top End Barra Series, Garma Festival, Brunette Downs Races, Henley on Todd Regatta, and Uluru Astronomy Weekend. The map also labels major parks like Litchfield, Nitmiluk, West Macdonnell, and Watarrunga, and towns like Darwin, Katherine, Mataranka, Dali Waters, Top Springs, Cape Crawford, Wolloprang, Tennant Creek, Barkly Homestead, Alice Springs, Glen Helen, and Ayers Rock.

## JANUARY

- Daily Free Activities
- Heineken Hottest 7s in the World
- Parap Outdoor Markets (year-round)
- NRSFC Junior Fishing Competition

## FEBRUARY

- Anniversary of the Bombing of Darwin
- Nightcliff Markets (year-round)
- The Borella Ride
- Imparja Cup Cricket Carnival
- Todd Mall Markets (year-round)

## MARCH

- Tiwi Islands Football Final Art Sale
- Top End Barra Series at Shady Camp
- Airmorth Ladies Fishing Classic
- King Ash Bay Fishing Classic

## APRIL

- Mindil Beach Sunset Market begins
- Elliott Mardi Gras
- Aileron Bush Weekend
- Alice Springs Cup Carnival
- Easter MTB Muster
- Tjungu Festival

## MAY

- Bass in the Grass Music Festival
- Nightcliff Seabreeze Festival
- Barra Nationals
- Daly Waters Rodeo & Campdraft
- Merrepen Arts Festival
- Two Race Day Cup
- AFL - Melbourne Demons V Port Adelaide
- Bangtail Muster
- Ingkerreke Commercial MTB Enduro
- Alice Springs Cup Carnival
- Wide Open Space Festival
- Outback Fest

## JUNE

- V8 Supercars Championship Series
- Greek Glenti
- Katherine Country Music Muster
- Barunga Festival
- Brunette Races - ABC Amateur Race Club
- Alice Springs Beanie Festival
- Tatts Finke Desert Race

## JULY

- Territory Day Fireworks displays
- Royal Darwin Show
- Darwin Cup Carnival
- Darwin Lions Beercan Regatta
- AFL - Melbourne Demons V Fremantle
- Darwin Fringe Festival
- Walking with Spirits
- Katherine & District Show
- Tennant Creek & District Show
- Lasseters Camel Cup
- Alice Springs Show
- Australian Outback Marathon

## AUGUST

- NRL - Parramatta Eels V Penrith Panthers
- Darwin Aboriginal Art Fair
- Darwin Festival
- Garma Festival
- Arnhemland Bird Week
- Desert Harmony Festival
- National Road Transport Hall of Fame
- Henley on Todd Regatta
- Harts Range Bush Sports Weekend
- Alice Desert Festival
- A-League match - Adelaide United FC
- Uluru Astronomy Weekend

## SEPTEMBER

- Telstra National Aboriginal & Torres Strait Islander Art Award
- SWB Fishing Competition, Corroboree
- Desert Song Festival
- Red CentreNATS
- Desert Mob
- Red Centre Bird Festival

## OCTOBER

- Saltwater Fly Fishing Challenge
- Corroboree Park Challenge
- Barkly Gold Rush Camp Draft
- Alice Springs Masters Games (biennial)
- Uluru Photography Expedition

## NOVEMBER

- Stormwatching season begins
- Berry Springs Community Markets
- Nightcliff Markets (year-round)
- XXXX Gold Gove Game Classic

## DECEMBER

- Rapid Creek Markets (year-round)
- New Year's Eve at the Waterfront
- Katherine Community Markets
- Alice Springs Christmas Carnival

SEE WHAT OTHERS ARE SAYING ABOUT THE NT:

[www.travelnt.com](http://www.travelnt.com)

@AusOutbackNT

Northern Territory - Australia's Outback

AusOutback NT

Northern Territory, Australias Outback

@AusOutbackNT



FOR A COMPLETE LIST OF ALL THE NT EVENTS VISIT [TRAVELNT.COM/EVENTS](http://TRAVELNT.COM/EVENTS)

All maps and attractions within this document represent journeys and are not to scale. Drive times are approximate and some permits may apply. Check local conditions before starting your journey.