

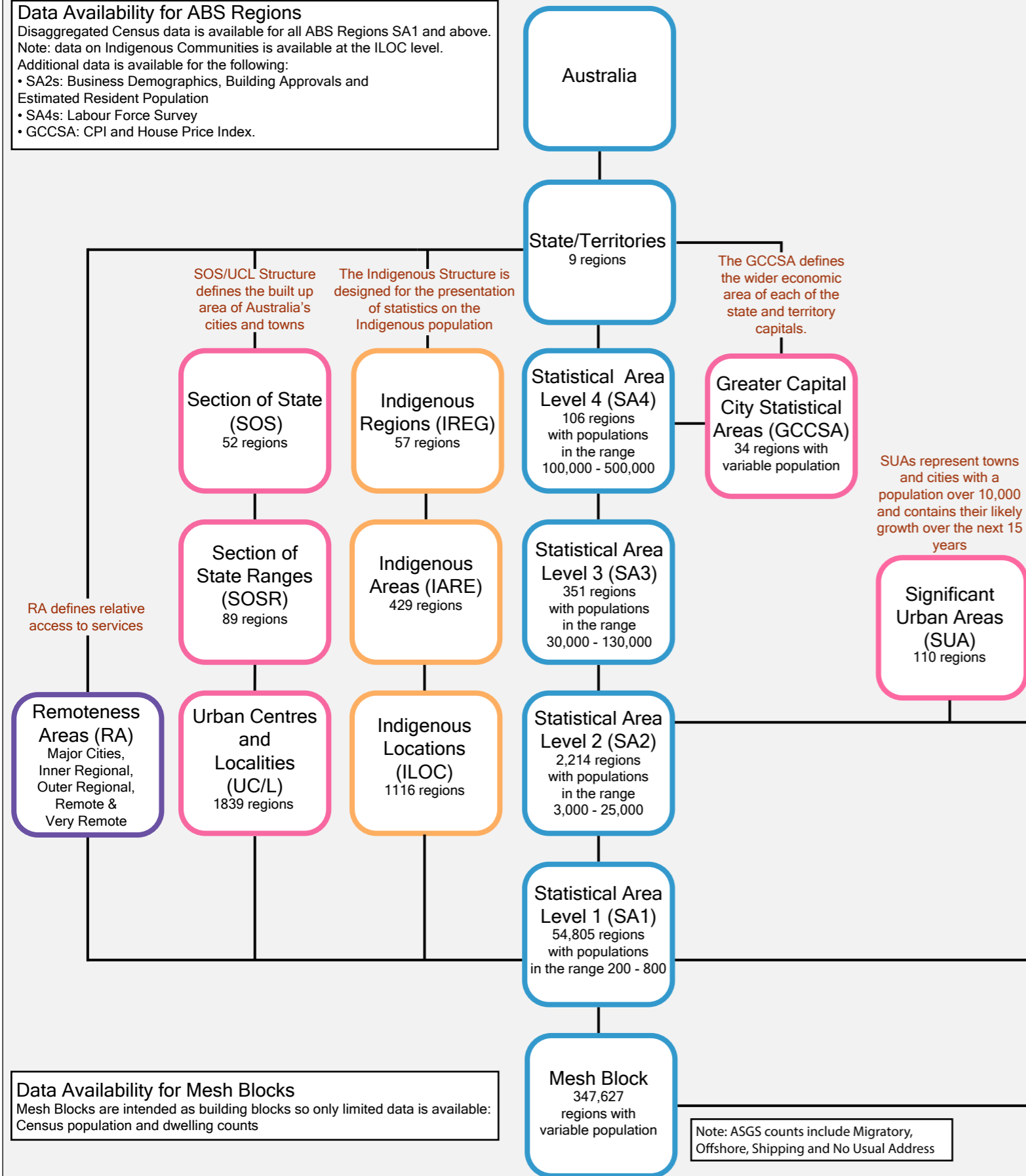
The Australian Statistical Geography Standard (ASGS) 2011 Structure and Summary

ABS Structures

These structures are defined by the ABS and remain stable between Censuses.

The Main (SA) Structure is based on the functional area of major cities and towns and gazetted suburbs and localities

Data Availability for ABS Regions
 Disaggregated Census data is available for all ABS Regions SA1 and above.
 Note: data on Indigenous Communities is available at the ILOC level.
 Additional data is available for the following:
 • SA2s: Business Demographics, Building Approvals and Estimated Resident Population
 • SA4s: Labour Force Survey
 • GCCSA: CPI and House Price Index.



Data Availability for Mesh Blocks
 Mesh Blocks are intended as building blocks so only limited data is available: Census population and dwelling counts

Non - ABS Structures

Structures not defined by the ABS but are approximated using regions from the ABS Main Structure.

Data Availability for Non-ABS Regions
 Disaggregated Census data is available for all non-ABS Regions. Additional data is available for the following:
 • Tourism regions: Tourism data
 • Postal Area: Vehicle registration
 • LGAs: Finance, Agriculture, Building Approvals and Estimated Residential Population.

