

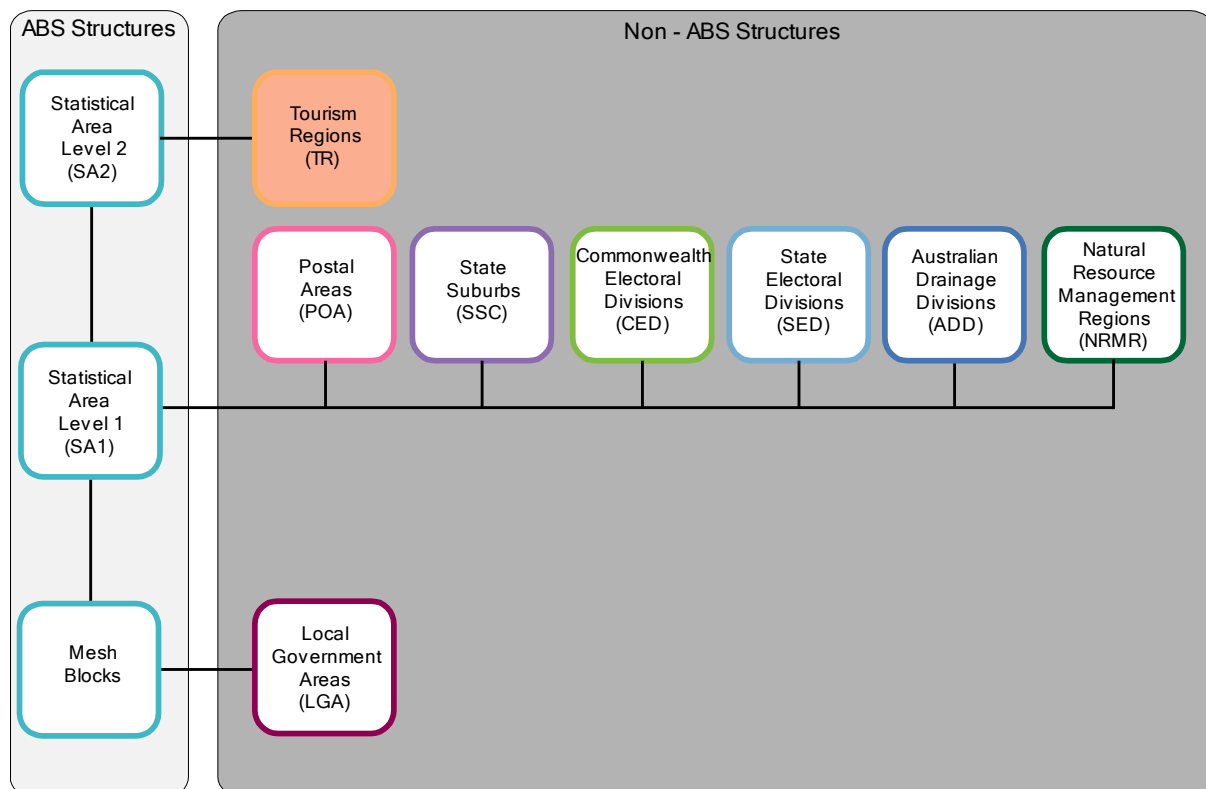
## TOURISM REGIONS

### How do TRs fit into the Australian Statistical Geography Standard?

Tourism Regions (TRs) are a Non-ABS Structure of the Australian Statistical Geography Standard (ASGS). Non-ABS Structures represent regions that are not defined or maintained by the ABS, but which are important to data users. TR boundaries are provided by Tourism Research Australia (TRA), part of the Australian Government Department of Resources, Energy and Tourism.

The diagram below shows the relationship of TRs to the other Non-ABS Structures and the main (SA1-4) structure of the ASGS. TRs are approximated by aggregates of whole Statistical Areas Level 2 (SA2).

**Diagram 1:** ASGS Non-ABS Structures



## How did TRs fit into the Australian Standard Geographical Classification (ASGC)?

In the past TRs have been aggregations of Statistical Local Areas (SLA), yet they have never officially been part of the ABS statistical geography and therefore, were not in the ASGC. This inclusion of TRs in the ASGS marks the first time that TRs have been officially recognised in an ABS geographical classification.

## What data is available by TR?

The ABS and other organisations publish tourism data by TRs. For the survey of [Tourist Accommodation, Australia](#) (cat. no. 8635.0), the 2011 TR boundaries relate to data released from, and including, the March Quarter 2012 through to the December Quarter 2012.

Tourism Research Australia also produces a range of statistics for TRs:  
<http://www.ret.gov.au/tourism/tra/regional/Pages/default.aspx>

Census data has never been released on TR. However, 2011 Census data will be available at SA2, which in turn can be aggregated up to TRs using Census products such as Census Table Builder.

## When will the TRs be updated?

The TRs are updated annually by TRA in consultation with State and Territory Tourism organisations. The ABS will update the TR structure of the ASGS annually.

## Where can I get further information?

More information on the ASGS and ABS Statistical Geography can be found by visiting the ABS web site: <http://www.abs.gov.au/geography>

Any questions or comments can be emailed to: [geography@abs.gov.au](mailto:geography@abs.gov.au)