

Commonwealth and State Electoral Divisions (CEDs and SEDs)

What are Commonwealth Electoral Divisions?

Commonwealth Electoral Divisions (CEDs) are an ABS approximation of the Australian Electoral Commission (AEC) federal electoral division boundaries. An AEC federal electoral division is an area legally prescribed for the purpose of returning one member to the House of Representatives, Australia's Federal Lower House of Parliament. Federal electoral divisions may be redistributed on a state-by-state basis after a Federal Election or following a Census of Population and Housing.

CEDs form part of the Non-ABS structures within the Australian Statistical Geography Standard (ASGS), the ABS standard geographic framework, and are constructed from allocations of whole Statistical Areas Level 1 (SA1s).

The 2011 release of CEDs approximates the electoral divisions in place at the time of the 2010 Federal Election, and is based on data from the 2006 Census of Population and Housing (the Census).

The 2013 release of CED digital boundaries is based upon the official AEC federal electoral division boundaries to be used for the 2013 Federal Elections, as released by PSMA Australia in May 2012. These include redistributed boundaries for both South Australia and Victoria. Some CEDs in other States may also vary slightly from the 2011 boundaries due to the fact that the 2013 edition utilised data from the 2011 Census to allocate SA1s to an electoral division.

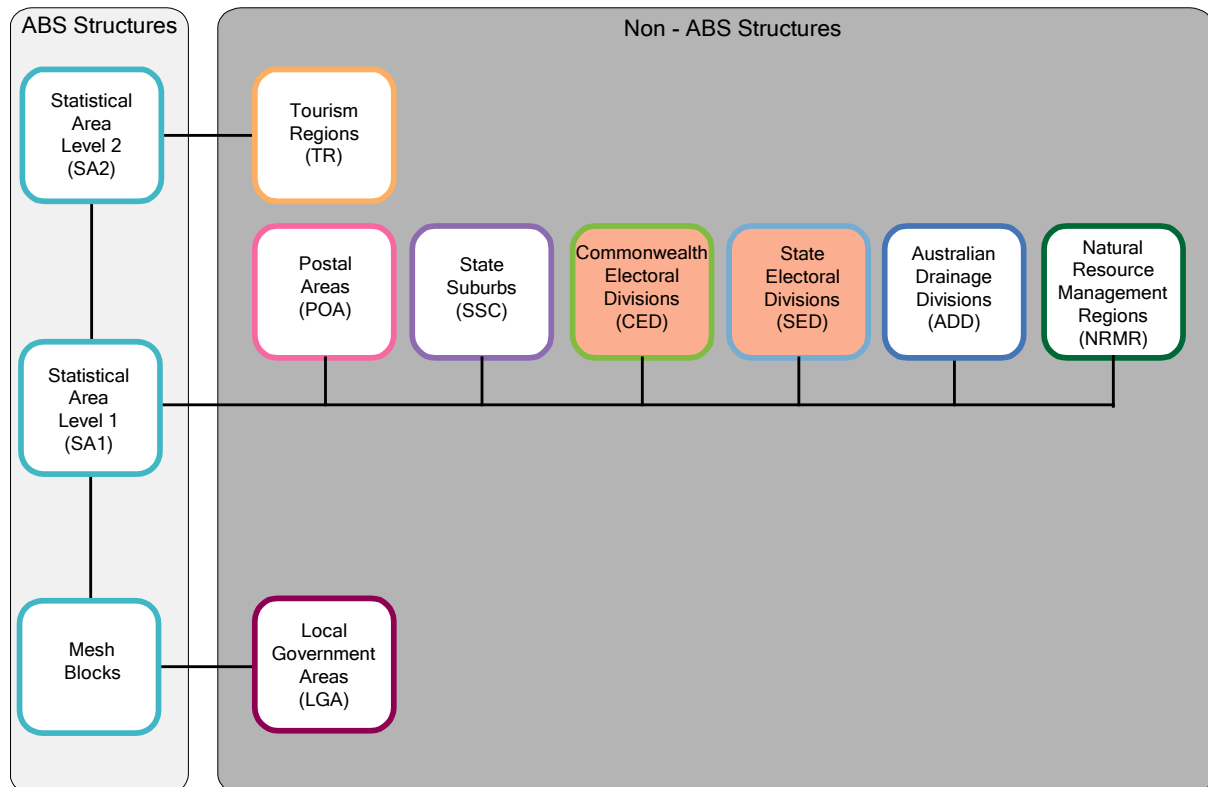
What are State Electoral Divisions?

State Electoral Divisions (SEDs) are an ABS approximation of state electoral districts. A state electoral district (referred to as "divisions" in Tasmania and the NT, and "electorates" in the ACT) is an area legally prescribed for the purpose of returning one or more members to the state or territory (S/T) Lower Houses of Parliament (or Legislative Assemblies in the NT and ACT, and Legislative Council in Tasmania). The 2011 release of SEDs represents the electoral districts used for State Elections immediately prior to the Census of Population and Housing on 9 August 2011, and are based on data from the 2006 Census. State electoral districts may be redistributed in the wake of a State Election or following a Census of Population and Housing.

SEDs form part of the Non-ABS structures within the ASGS, the ABS standard geographic framework, and are constructed from allocations of whole Statistical Areas Level 1 (SA1s).

Diagram 1 illustrates how CEDs and SEDs (in orange) relate to other ASGS and Non-ABS Structures.

Diagram 1: ASGS Non-ABS Structures.



How were CEDs and SEDs created?

The boundaries produced for CEDs and SEDs were constructed from whole SA1s.

Each SA1 was allocated to an officially gazetted electoral division or district. Where an SA1 fell wholly within an electoral division it was allocated to that division. Where an SA1 crossed one or more boundaries, it was allocated to the division in which the highest proportion of its population resided, using population data published at Mesh Block level.

All Commonwealth and State Electoral Divisions valid at the time of creation are represented in these structures.

What data is available on CEDs and SEDs?

Data from the 2011 Census of Population and Housing is available for 2011 and 2013 CEDs and 2011 SEDs.

Where can I find CED or SED boundaries and data?

CED and SED boundaries are available in MapInfo Interchange and ESRI Shapefile formats and can be downloaded from the 'Downloads' tab of the following online publication: [Australian Statistical Geography Standard \(ASGS\): Volume 3 – Non ABS Structures](#) (cat. no. 1270.0.55.003).

The same publication together with other ABS statistical geography publications are found in the 'ABS Geography Publications' chapter of the ABS Statistical Geography website: <http://www.abs.gov.au/geography>

The ABS has released DataPacks containing 2011 Census Community Profile data for all of Australia and digital boundary files for the 2011 boundaries. DataPacks are available either by downloading files from the ABS website, or by purchasing a DVD. Users who wish to download DataPacks directly from the ABS website will need to register first and then download a DataPack based on a profile for a selected geography (e.g. all SA1s).

Data from the 2011 Census and coded to the 2013 CEDs have been released in the [ABS Stats](#) mobile application and made available in [TableBuilder](#).

More information on Census 2011 products and services is available through the publication: [Information Paper: Census of Population and Housing - Products and Services, 2011](#) (cat. no. 2011.0.55.001).

Where can I get further information?

A detailed discussion of the CEDs and SEDs and the criteria used in their design can be found at: [Australian Statistical Geography Standard \(ASGS\): Volume 3 – Non ABS Structures, July 2011](#) (cat. no. 1270.0.55.003).

More information on the ASGS and ABS Statistical Geography can be found by visiting the ABS website: <http://www.abs.gov.au/geography>

Any questions or comments can be emailed to geography@abs.gov.au