

# Seattle Design Commission

2015 COUNCIL BRIEFING

**April 6, 2015**

Seattle  
**design**  
Commission

# PRESENTATION OUTLINE

- 1. Overview of the Commission**
- 2. 2014 Year in Review**
- 3. 2015 Issues and Trends**

# OVERVIEW OF THE COMMISSION

- **Established in 1968**
- **Advise the Mayor and City Council on projects affecting the public realm, including:**
  - **Capital Improvement Program projects (CIP)**
  - **Right-of-Way projects (ROW)**
    - Street and alley vacations
    - Skybridges
    - Long-term street use permits
  - **Major transportation projects (M)**
  - **Plan or policy reviews (P)**
  - **Light Rail Review Panel (LRRP)**
    - Members from Design, Arts, and Planning Commissions
    - Focus: review of light rail stations and neighborhood integration

# OVERVIEW OF THE COMMISSION

## Mission

- Champion **design excellence** in the public realm.
- Promote **design practices** that catalyze innovative sustainable development, equal opportunity, and social inclusion.
- Ensure that the city's built environment makes Seattle a world-class example of **sustainable urban design** that strengthens community, public life, and economic prosperity.

# OVERVIEW OF THE COMMISSION

## Commission Structure

### 4 required appointments:

- 2 Architects
- 1 Fine Artist
- 1 lay member

### 5 additional appointments from the following professions:

- Urban Planner
- Urban or Environmental Designer
- Licensed Engineer
- Landscape Architect

### 1 member from the Get Engaged program

- Meetings 1st and 3rd Thursday
- 15-20 hours per month
- Hourly compensation

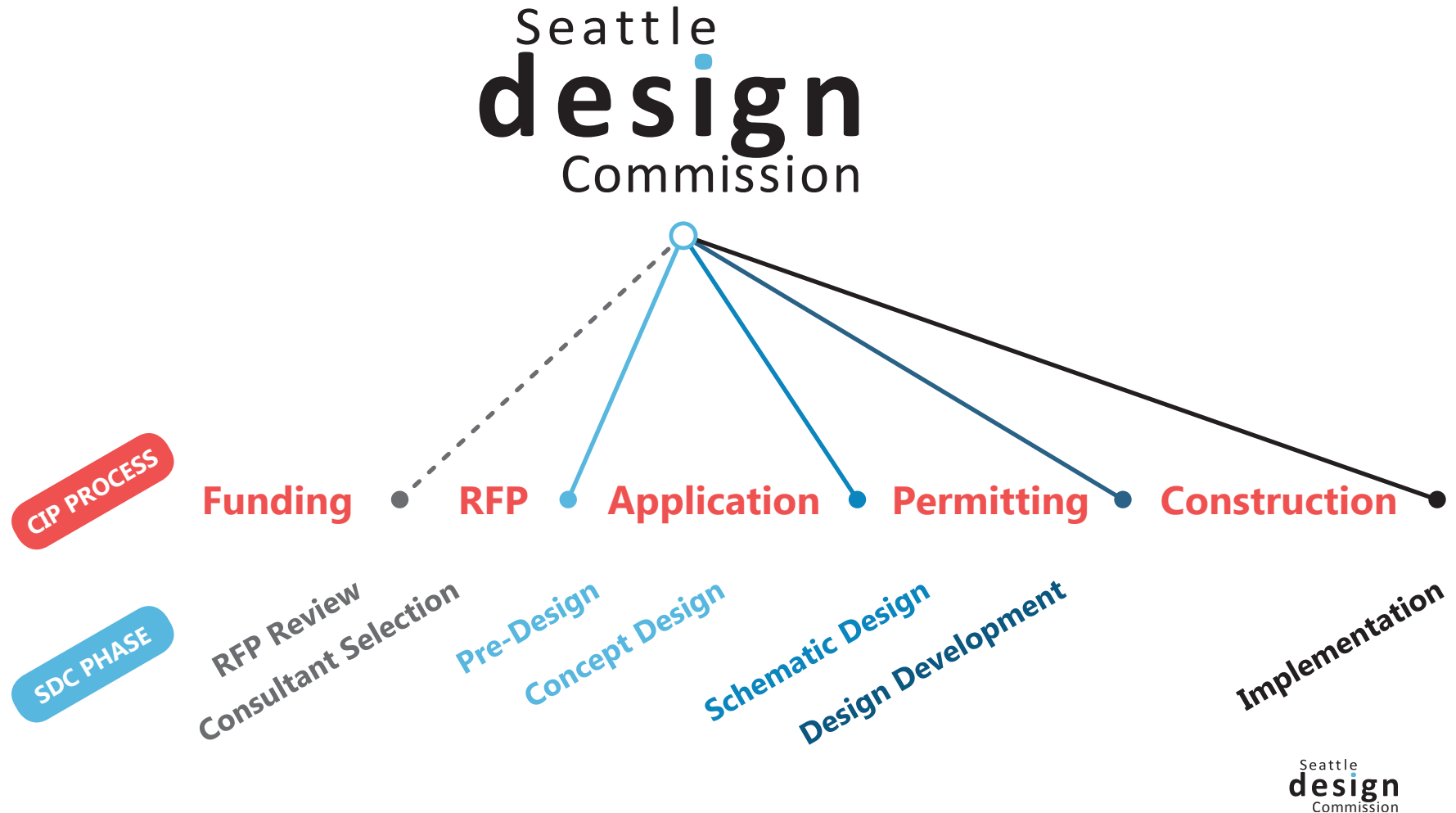
### Commission Staff

Director  
Coordinator  
Planner  
Administrative Assistant



# OVERVIEW OF THE COMMISSION

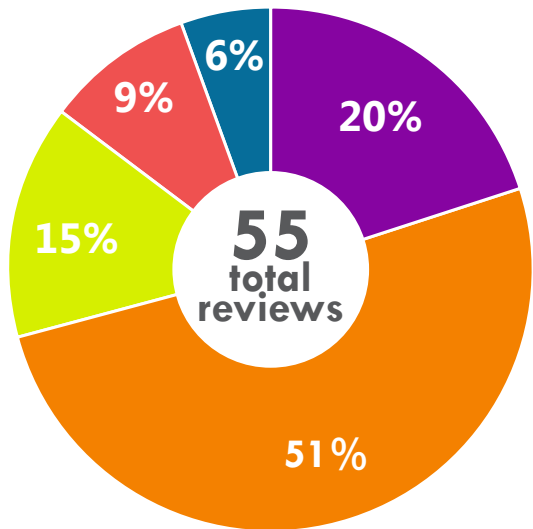
## Our role in the CIP process



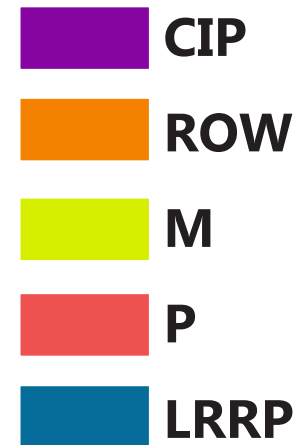
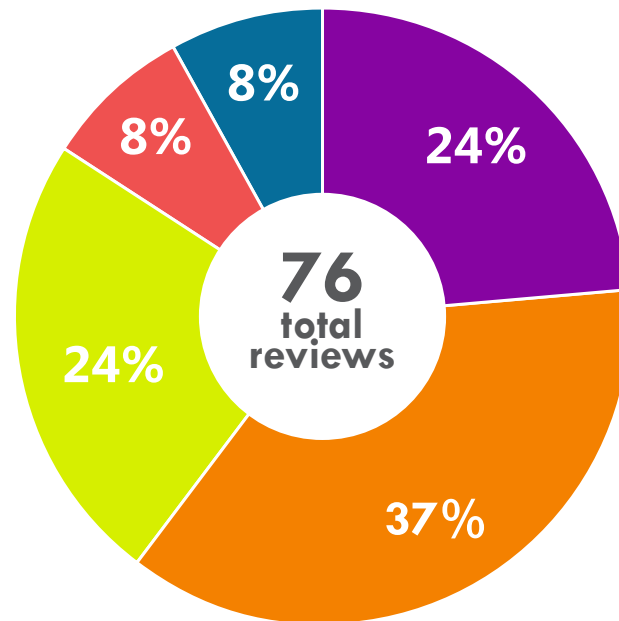
# 2014 YEAR IN REVIEW

## Number of reviews by project type

**2013**



**2014**



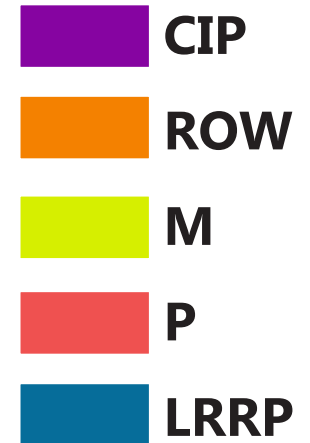
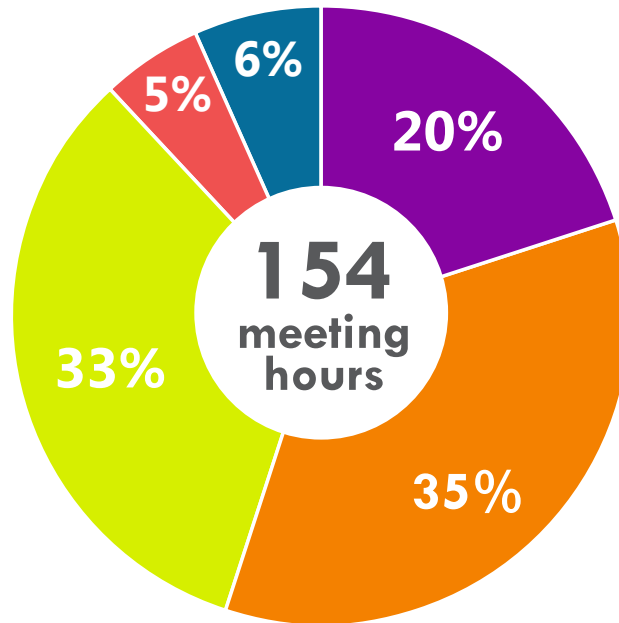
# 2014 YEAR IN REVIEW

## Hours by project type

**2013**



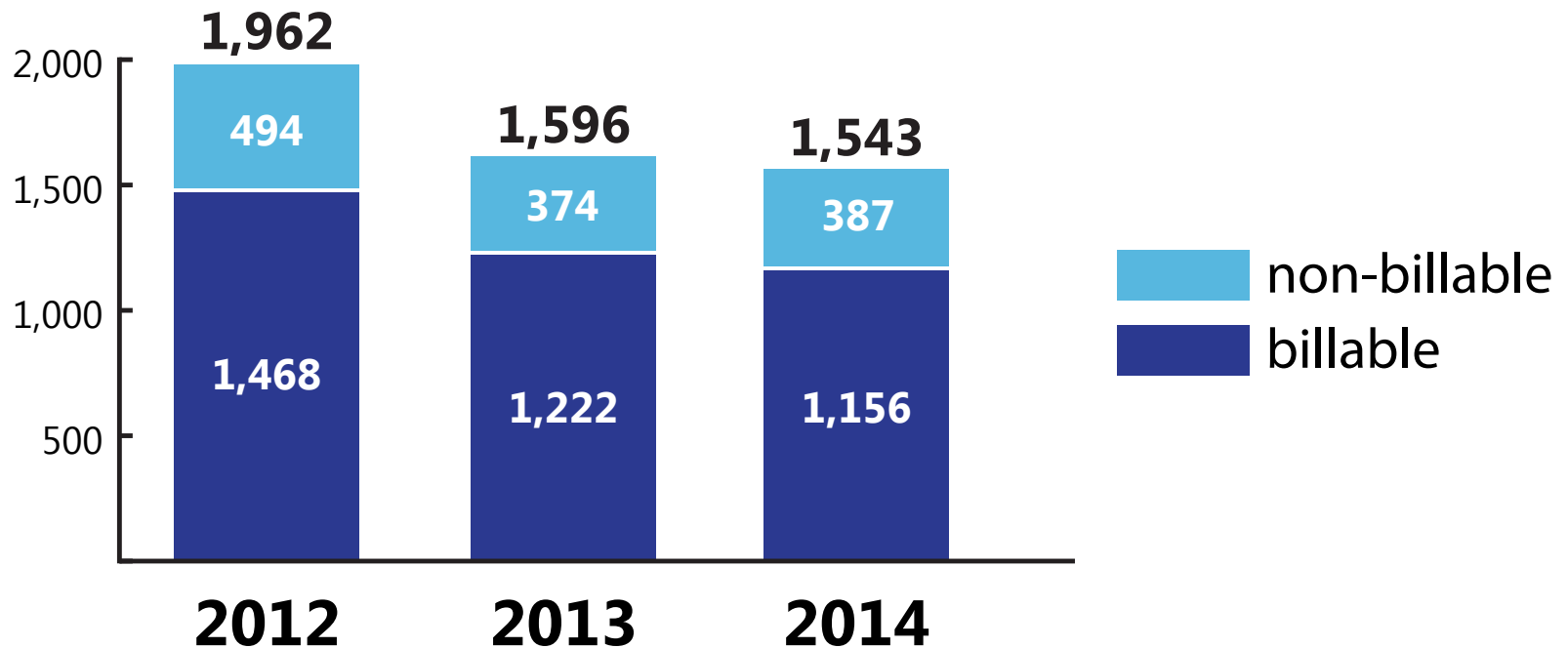
**2014**





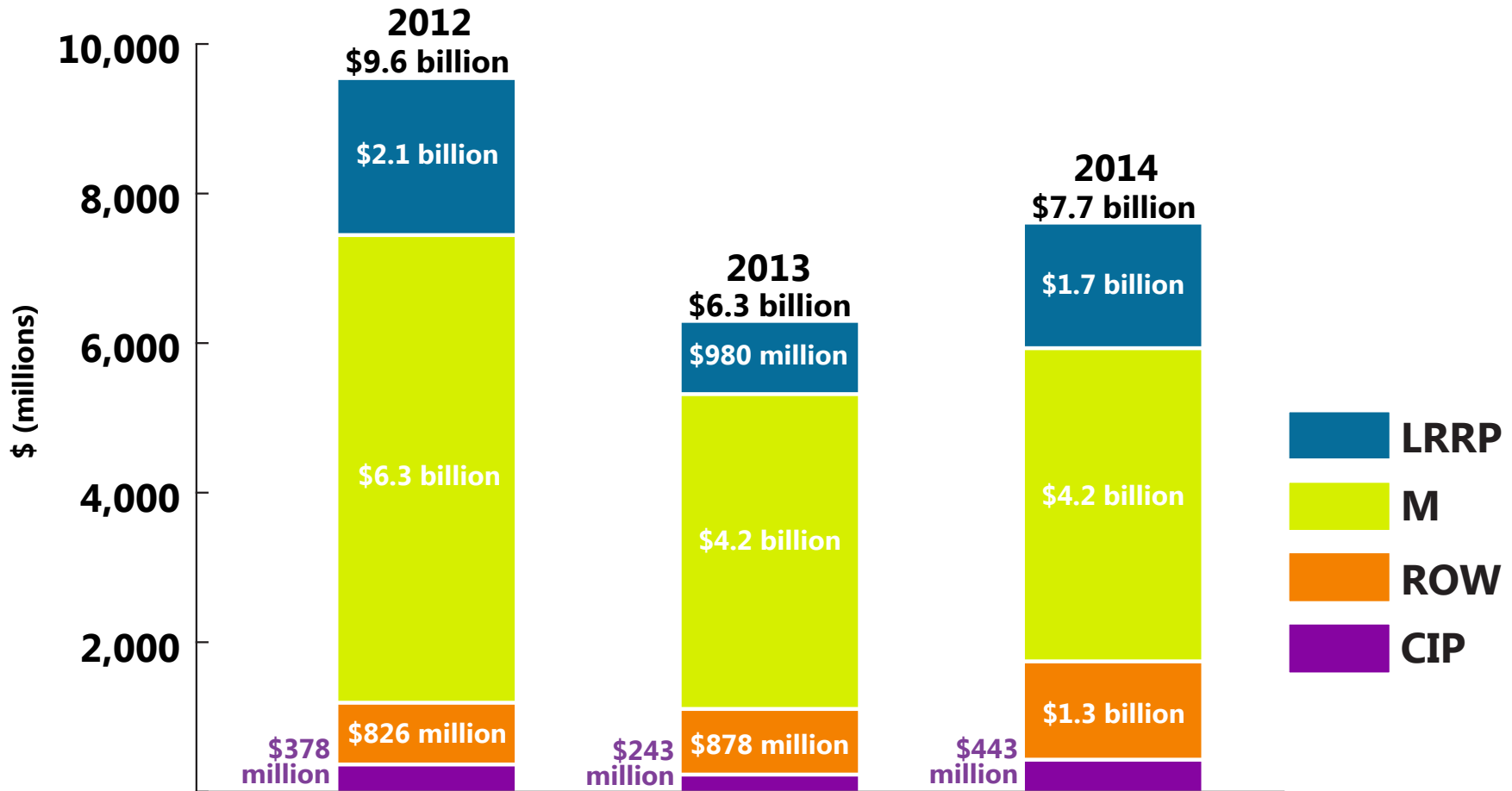
# 2014 YEAR IN REVIEW

## Commissioner hours



# 2014 YEAR IN REVIEW

## Project value



# 2014 YEAR IN REVIEW

## Downtown

7 projects | \$1.6 billion

## Capitol Hill / Montlake

5 projects | \$3.6 billion

## South Lake Union / Queen Anne

4 projects | \$470 million

## North Seattle

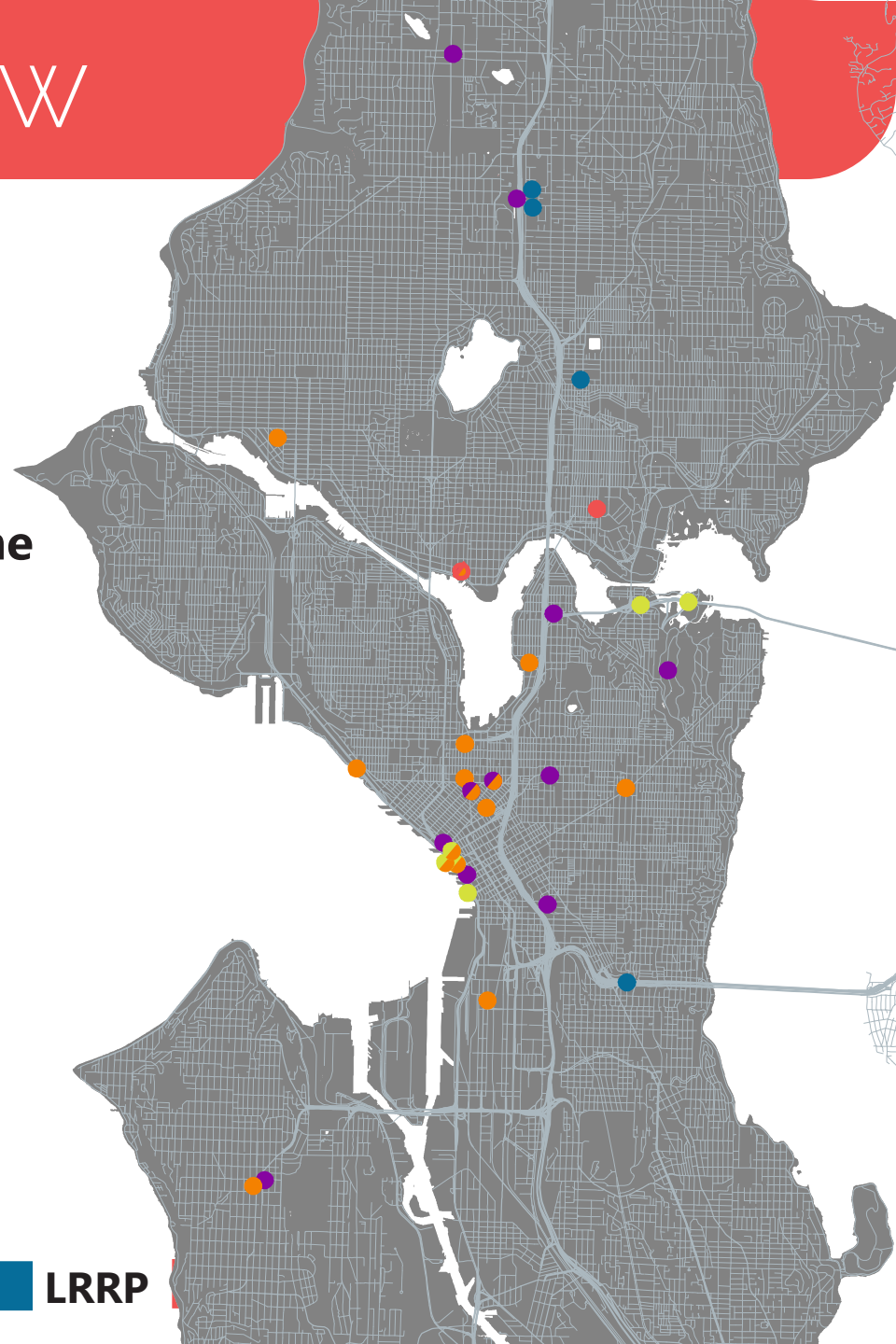
6 projects | \$1.5 billion

## West Seattle

2 projects | \$89 million

## Southeast Seattle

2 projects | \$283 million



**CIP** **ROW** **M** **LRRP**

# 2014 YEAR IN REVIEW

## Downtown

Pike Place Market Waterfront Entrance  
Westlake & Lenora Park  
Seattle Arena  
9th & Lenora Alley Vacation  
9th & Stewart Alley Vacation  
Waterfront  
Colman Dock

## Capitol Hill / Montlake

Fire Station 22 – Roanoke  
Arboretum Loop Trail  
E Howe Street Vacation  
2026 E Madison St Alley Vacation  
SR 520

## Southeast Seattle

Yesler Terrace Park  
Rainier Light Rail Station

## South Lake Union / Queen Anne

Denny Substation  
Block 93 – 515 Westlake Ave N  
Block 89 – 111 Westlake Ave N  
John Coney Plaque

## North Seattle

North Precinct Police Station  
North Transfer Station  
Swedish Ballard Skybridge renewal  
Northgate Light Rail Station  
Northgate Garage  
Roosevelt Light Rail Station

## West Seattle

Fire Station 32 – West Seattle  
4755 Fautleroy Way SW / The Whittaker

# 2014 YEAR IN REVIEW

## SR 520 Montlake Lid

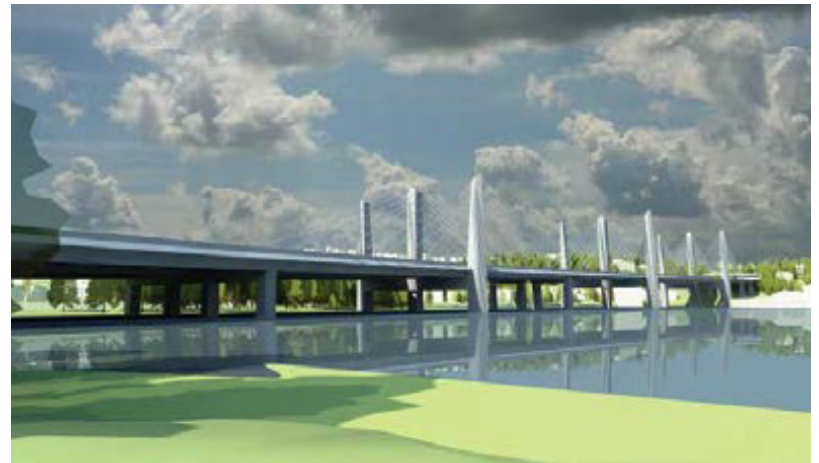


# 2014 YEAR IN REVIEW

## SR 520 Portage Bay Bridge



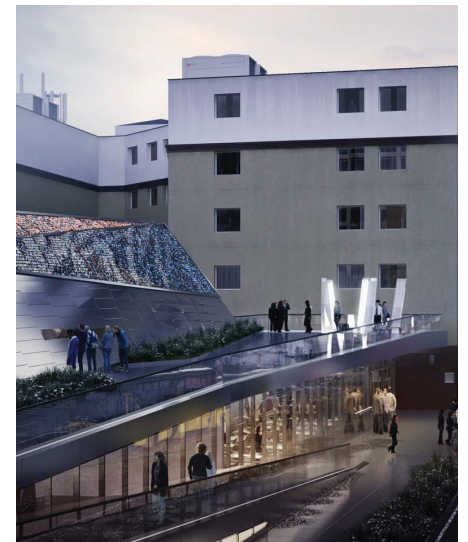
**Box girder bridge**



**Cable stay bridge**

# 2014 YEAR IN REVIEW

## Denny Substation



# 2014 YEAR IN REVIEW

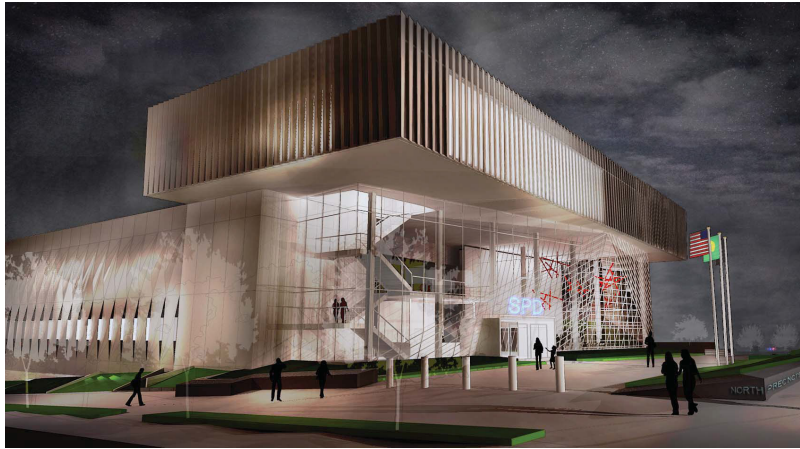
## Yesler Park





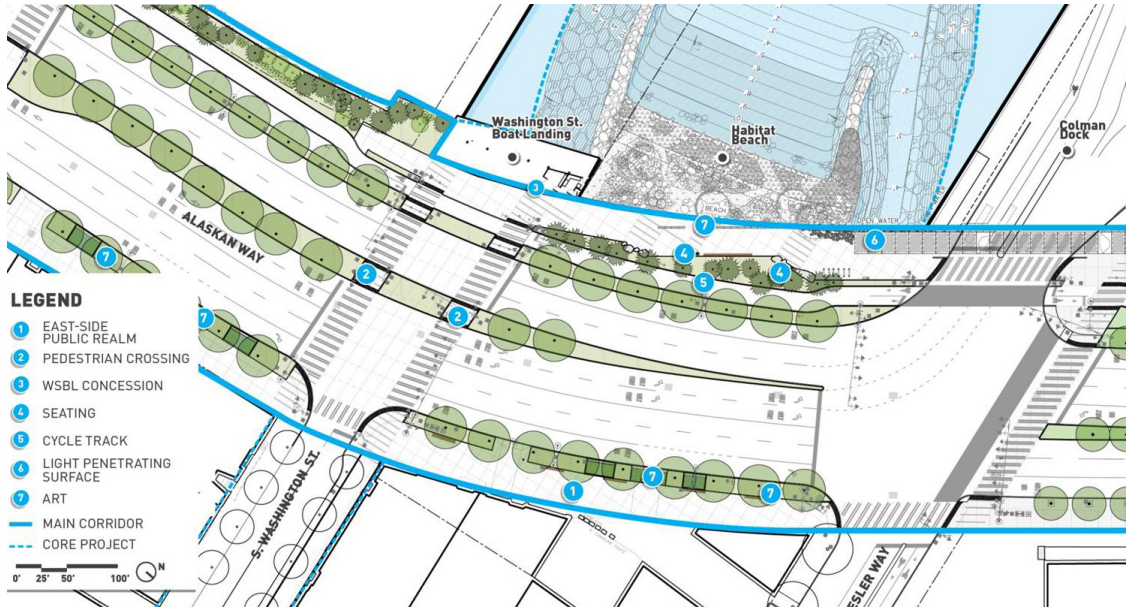
# 2014 YEAR IN REVIEW

## North Precinct



# 2014 YEAR IN REVIEW

## Waterfront



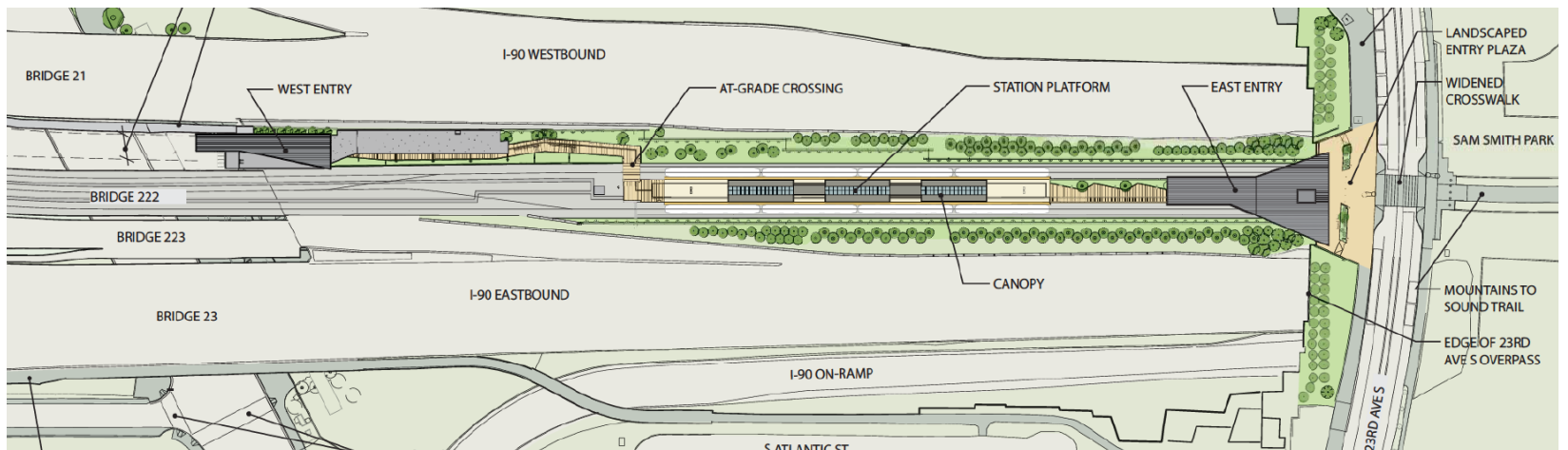
# 2014 YEAR IN REVIEW

## Block 93 – 515 Westlake Ave N



# 2014 YEAR IN REVIEW

## Rainier Station



# 2015 ISSUES & TRENDS

## **Back to the city**

- **Urban corporate campuses**
- **Institutional expansions**
- **Pressure on the right-of-way**

## **Equity in design**

- **Privatization of the public realm**
- **Relevance of parks**
- **Services (KC Children and Family Justice Center)**

## **Politics of urban design**

- **Wage and union pressures**
- **Transportation choices**
- **Vacations and the public realm**

# 2015 ISSUES & TRENDS

## Vacations reviewed by SDC

### Since 2005

#### **21 street vacations**

- 18 full
- 2 subterranean
- 1 partial

#### **23 alley vacations**

- 21 full
- 2 subterranean

### in 2014

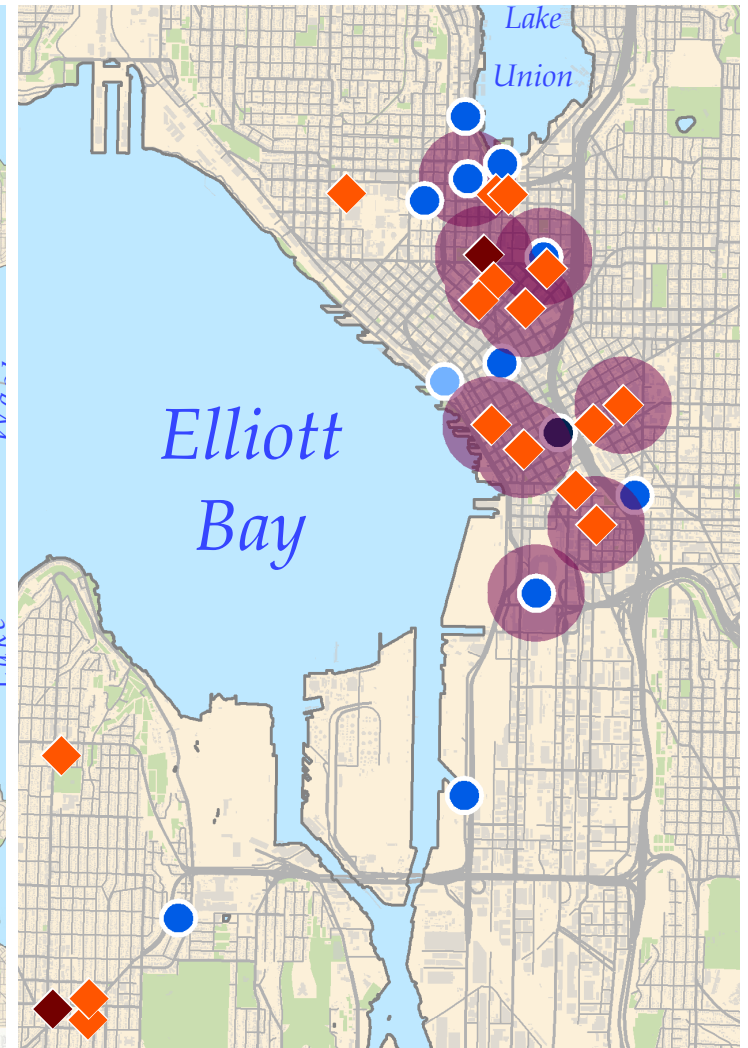
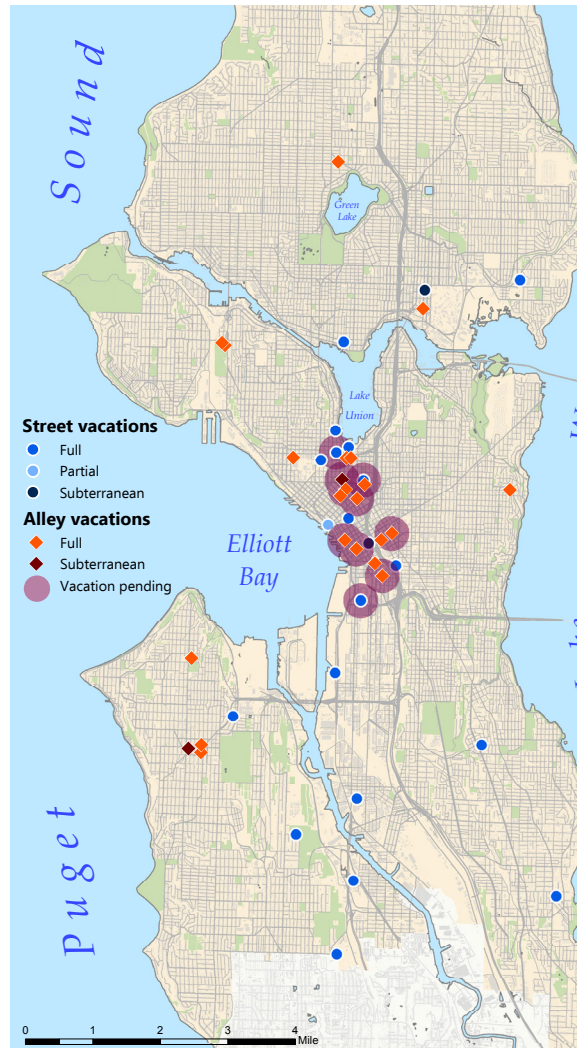
- 6 alley vacations
- 5 street vacations

### in 2013

- 2 alley vacations
- 3 street vacations

### in 2012

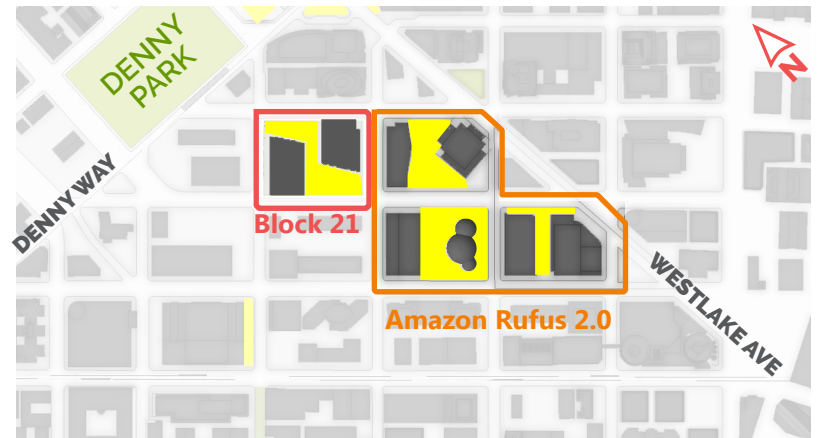
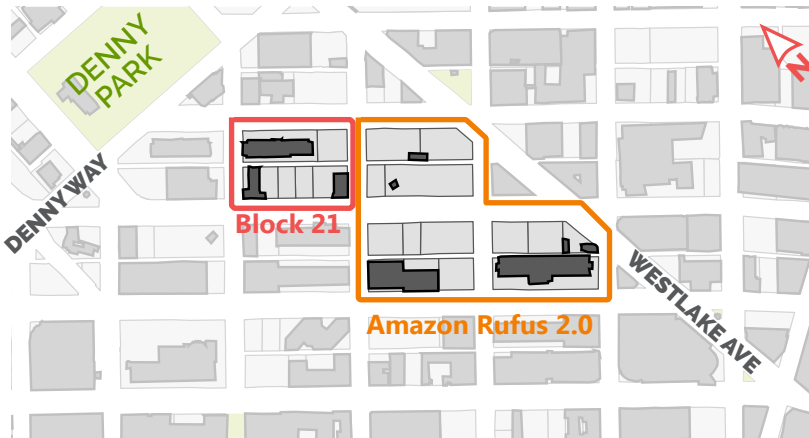
- 2 alley vacations
- 4 street vacations



# 2015 ISSUES & TRENDS

## Changes in urban form

### Alley vacations in Denny Triangle and South Lake Union



2005

2014

Publicly accessible private open space

## **The complexity of vacation**

- 1. Implementation of City plans and policies**
- 2. Implementation of urban design frameworks and City code in South Lake Union**
- 3. Public–private partnerships**
- 4. Conflicts between public benefits and land use code requirements**
- 5. Privatization of public spaces**
- 6. Infrastructure demands**
- 7. The role of art**





Seattle  
**design**  
Commission