

OUR ROVING CAMERAMAN

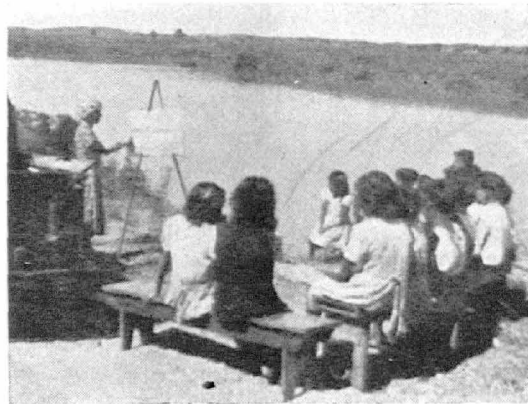


THE aboriginal people in this State are scattered over a wide area, so far apart that many of them may never meet, but the magic camera can bring to us intimate glimpses of these people and enable us to become better acquainted with each other.

If you have photos at home, similar to those you see published in *Dawn*, send them along and thus add to, and maintain, the interest in your fellow men and women.



Mervyn Cain, Rex Sorby and Valerie Goulding of Burra Bee Dee.



Miss B. Wood giving the Greenhills (Kempsey) Sunday School a lesson down by the river.



Lilly Ballangarry, of Bowraville, snapped in a happy mood.



Babara Sorby and Robert Goulding fall in on the milk parade at Burra Bee Dee.



Olive Colliss, of Muttama, poses for *Dawn* whilst out walking recently.



Well-known identity of Burra Bee Dee, Mrs. Griffiths and her Grand-daughter, Doreen.