

Where to Camp on Dartmoor Map

Map showing wild camping areas, campsites, camping barns, youth hostels and bunk houses



Camping on Dartmoor

Backpacking and sleeping wild on Dartmoor are wonderful ways to explore the area. Camping for one or two nights on the open land on Dartmoor is perfectly acceptable provided that you choose your spot sensibly and don't pitch your tent on farmland, on moorland enclosed by walls, within 100 metres of a road, on flood plains or on archaeological sites.

This map shows you where you can wild camp and provides a list of camp sites, camping barns, bunk houses and Youth Hostels if you prefer somewhere with more facilities. For peace of mind it is always advisable to check availability before arrival.



go further

Youth hostels in the Dartmoor area

-  **Okehampton Youth Hostel**
(open all year)
Tel: (01837) 53916
-  **Bellever Youth Hostel**
(open all year)
Tel: (01822) 880227

Camping barns and bunk houses in the Dartmoor area

-  **1 Dartmoor Expedition Centre**
Rowden Farm,
Widcombe-in-the-Moor
Tel: (01364) 621249
Grid Ref: SX 699764
-  **2 Forest Inn**
Hexworthy
Tel: (01364) 631211
Grid Ref: SX 655727
Open all year (groups of 10 or more October to March).
-  **3 Fox and Hounds**
Bridestowe, Okehampton
Tel: (01822) 820206
Grid Ref: SX 528889
-  **4 Fox Tor Café**
Princetown, Yelverton
Tel: (01822) 890238
Grid Ref: SX 591735
-  **5 Holne Barn**
Holne
Tel: (01364) 631544
Grid Ref: SX 707694
-  **6 Lower Aish**
Poundsgate
Tel: (01364) 631229
Grid Ref: SX 706722
-  **7 Powder Mills Bunkhouse**
Postbridge
Tel: (01822) 880277
Grid Ref: SX 627769
-  **8 Plume of Feathers**
Princetown
Tel: (01822) 890240
Grid Ref: SX 591735
-  **9 Runnage Farm**
Postbridge
Tel: (01822) 880222
Grid Ref: SX 667792
-  **10 Sparrowhawk Backpackers Hostel**
45 Ford Street,
Moretonhampstead, Devon
Tel: (01647) 440318
Grid Ref: SX 751861
-  **11 The Old House**
Great Houndtor, Manaton
Tel: (01647) 221202
Grid Ref: SX 749795

Camp sites in the Dartmoor area



1 Beara Farm Caravan & Camping Site

Colston Road, Buckfastleigh,
Devon, TQ11 0LW
Tel: (01364) 642234
Grid Ref: SX 751645



2 Betty Cottles Inn

Graddon Cross, Okehampton,
Devon, EX20 4LR
Tel: (01837) 55339
www.bettycottles.co.uk
Grid Ref: SX 564934



3 Bridestowe Caravan Park

Glebe Park, Bridestowe,
Okehampton, Devon, EX20 4ER
Tel: (01837) 861261
Grid Ref: SX 518892



4 Bundu Camping & Caravan Park

Sourton Down, Okehampton,
Devon, EX20 4HT
Tel: (01837) 861611
www.bundu.co.uk
Grid Ref: SX 546915



5 Cheston Caravan & Camping Park

Folly Cross, Wrangaton Road,
South Brent, Devon, TQ10 9HF
Tel: (01364) 72586
www.chestoncaravanpark.co.uk
Grid Ref: SX 685585



6 Churchill Farm Caravan & Campsite

Buckfastleigh,
Devon, TQ11 0EZ
Tel: (01364) 642844
Grid Ref: SX 742664



7 Cockingford Campsite

Cockingford Farm,
Widcombe-in-the-Moor,
Newton Abbot,
Devon, TQ13 7TG
Tel: (01364) 621258
Grid Ref: SX 717750



8 Dartmoor Barley Meadow Camping & Caravanning Site

Crockernwell, Exeter,
Devon, EX6 6NR
Tel: (01647) 281629
www.barleymeadow.com
Grid Ref: SX 742923



9 Dartmoor Caravan Park

Abbey Lane, Crapstone,
Yelverton, Devon, PL20 7PG
Tel: (01822) 854509
www.dartmoorcaravanpark.co.uk



10 Dartmoor Country Holidays

Magpie Leisure Park,
Horrabridge, Yelverton,
Devon, PL20 7RY
Tel/Fax: (01822) 852651
www.dartmoorcaravanpark.co.uk



11 Great Palstone Touring Caravan Park

Exeter Road, South Brent,
Devon, TQ19 9JP
Tel: (01364) 72227
www.touristnetuk.com
Grid Ref: SX 705600

(cont)

Camp sites in the Dartmoor area (cont)

-  **12 Harford Bridge Holiday Park**
Peter Tavy, Tavistock,
Devon, PL19 9LS
Tel: (01822) 810349
www.harfordbridge.co.uk
Grid Ref: SX 503767
-  **13 Higher Longford Caravan & Camping Park**
Moorshop, Tavistock,
Devon, PL19 9LQ
Tel: (01822) 613360
www.higherlongford.co.uk
Grid Ref: SX 517747
-  **14 Langstone Manor Park**
Moortown, Tavistock,
Devon PL19 9JZ
Tel: (01822) 613371
www.langstone-manor.co.uk
Grid Ref: SX 523738
-  **15 Lemonford Caravan Park**
Bickington, Newton Abbot,
Devon, TQ12 6JR
Tel: (01626) 821242
www.lemonford.co.uk
Grid Ref: SX 793725
-  **16 Lydford Caravan & Camping Park**
Lydford, nr Okehampton,
Devon, EX20 4BE
Tel: (01822) 820497
www.touristnetuk.com
Grid Ref: SX 511852
-  **17 Parkers Farm Holiday Park**
Higher Mead Farm,
Ashburton, Devon, TQ13 7LJ
Tel: (01364) 654869
www.parkersfarm.co.uk
Grid Ref: SX 777712
-  **18 Plume of Feathers Campsite**
The Square, Princetown,
Yelverton, Devon, PL20 6QQ
Tel: (01822) 890240
Grid Ref: SX 590733
-  **19 Runnage Farm**
Postbridge, Yelverton,
Devon PL20 6TN
Tel: (01822) 880222
Grid Ref: SX 668791
-  **20 Smithleigh Caravan & Camping Park**
Plympton, Plymouth,
Devon, PL7 5AX
Tel: (01752) 893194
Grid Ref: SX 587554
-  **21 Springfield Holiday Park**
Tedburn Road, Tedburn
St. Mary, Exeter, Devon,
EX6 6EW
Tel: (01647) 24242
www.springfieldholidaypark.co.uk
Grid Ref: SX 788936
-  **22 The River Dart Country Park**
Holne Park, Ashburton,
Devon, TQ13 7NP
Tel: (01364) 652511
www.riverdart.co.uk
Grid Ref: SX 732703
-  **23 Woodland Springs Touring Park** (adults only)
Venton, Drewsteignton,
Devon, EX6 6PG
Tel: (01647) 231695
www.woodlandsprings.co.uk
Grid Ref: SX 694912

Military ranges and training areas

The Ministry of Defence has a training area on northern Dartmoor which comprises Okehampton, Merrivale and Willsworthy ranges. **The public has access to these moorland areas except when the ranges are in use for live firing.**

The boundaries of the three Range Danger Areas are marked on the ground by a series of red and white posts with warning notices. When wishing to use these areas, the firing times must be checked and warning signals (red flags by day and red lamps at night) heeded. Dartmoor has been used for military training since the early 1800s. There is always a risk you could come across unexploded ordnance anywhere on the moor. Please do not touch or tamper with any strange or metal object, it may be dangerous.

Leave it alone, mark and note the location, and inform the Commandant (01837 650010), Okehampton Camp, the police or staff at an Information Centre.

Range Danger Areas - firing programmes

The public has guaranteed access to the Ranges at certain times of the year including public holidays and 1 - 31 August inclusive. At other times, the public has access when firing is not programmed. The firing programme for the following week is published in local newspapers, at Information Centres, and is available on freephone 0800 4584868 and www.dartmoor-ranges.co.uk BBC Radio Devon broadcasts daily updates. The firing programme contains information on whether each range is clear or allocated to day or night firing.

Camping within military ranges

You must take extra care if you camp in any of the military firing ranges. Make sure that the range is free of live firing both overnight and the next day (as day firing may start early in the morning). For further information see page 9 of *Camping on Dartmoor* booklet.

Emergency information

Search and rescue operations on Dartmoor are carried out by the Dartmoor Rescue Group. The Group operates at the request of the police. Therefore, if you are lost or injured or are aware of someone who is lost or injured on Dartmoor dial 999.

Where to camp on Dartmoor (diagrammatic only, as at March 2009) Map showing wild camping areas, campsites, camping barns, bunk houses and youth hostels

Where to camp on open moorland

Usually you need the landowner's permission to camp, but in the areas covered by the *Dartmoor Commons Act* shaded in purple on the map you are allowed to camp without asking permission.

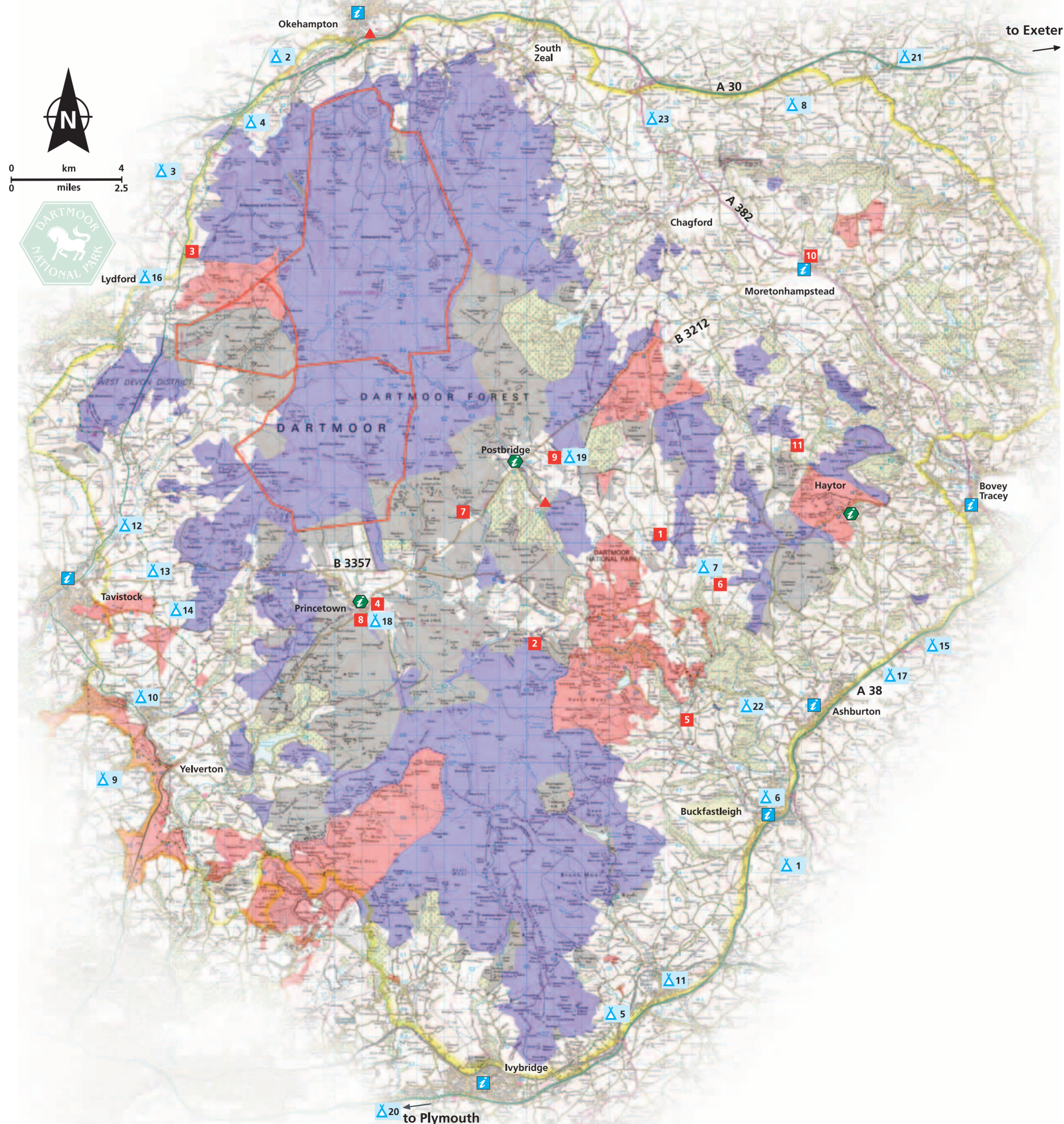
Some areas are excluded from the right to camp by the *Dartmoor Commons Act Byelaws* (see list below): places where **camping is not allowed** are shown in pink on the map.

These include:

- Spitchwick Common;
- Haytor Down;
- Roborough Down;
- Lydford High Down (all that part of Lydford Inner Common, north and west of the River Lyd);
- Cadover Bridge (all that part of CL 190 Shaugh Prior Commons bounded by the road east of Cadover Bridge, the access road to Trowlesworthy Farm and the River Plym);
- Shaugh Bridge (all that part of Meavy Commons comprising Shaugh Woods and Wigford Down);
- Whitchurch Down;
- Plasterdown;
- Holne Moor;
- Heathfield Down (near Cornwood);
- Firestone Common (near South Tawton);
- Shortdown;
- Huckworthy Common;
- Aish Ridge;
- Broadmoor;
- Brent Island;
- Headland Warren, Shapley Common, Coombe Down (including King Tor).

Countryside and Rights of Way Act (2000)

Since August 2005 there have been extra areas of land where the public has access as a result of the *Countryside and Rights of Way (CROW) Act*. In these areas, **camping is not allowed** unless you have the permission of the landowner. CROW Act access land is shown in grey on the map.



Key

- Common Land - where camping is allowed on open moorland (except those areas listed in the introduction of this leaflet and on page 5 of *Camping on Dartmoor* booklet)
- Common Land - where camping is **not** allowed (see list)
- Countryside and Rights of Way Act 2000 Access Land - camping is **not** allowed except with permission of landowner
- Range Danger Area
- Dartmoor National Park Boundary
- Dartmoor National Park Authority Information Centres
- Information Centres
- Youth Hostel
- Camping Barn
- Campsite

This booklet aims to provide some general information and is not intended to be a definitive statement of the law. Please remember that you walk all routes on Dartmoor at your own risk. You should always wear suitable clothing and footwear and carry a good map (Ordnance Survey or equivalent) and compass when walking on open moorland.

Whilst every care has been taken to ensure accuracy, Dartmoor National Park Authority cannot accept responsibility for any inaccurate, incomplete or out of date information, or any loss or damage that may result from reliance on it. The information in this booklet was correct at the time of going to print.

Dartmoor National Park Authority does not give any warranty or guarantee in respect of the accommodation listed and you are strongly advised to make your own enquiries to check the current availability or suitability of premises for your requirements before setting out.

Further information

For further information on walking in the National Park, pick up the free *Walking on Dartmoor* booklet available from National Park Authority Information Centres. This is packed with advice including sections on access and rights of way, safety, the military ranges, finding your way around, the Countryside Code, and taking your dog into the countryside.

www.openaccess.gov.uk
www.countrysideaccess.gov.uk

**Dartmoor National Park Authority,
High Moorland Visitor Centre, Princetown,
Yelverton, Devon PL20 6QF.
Tel: (01822) 890414
www.dartmoor-npa.gov.uk**



For south west England timetable enquires phone
Traveline: 0871 200 22 33