

WIRADJURI REGION



30
YEARS



**CELEBRATING
LAND RIGHTS**
1983 - 2013

30 YEAR FIGHT: OUR LAND, OUR RIGHTS

WIRADJURI REGION

Aboriginal male: 14,224

Aboriginal female: 13,814

Total: 28,038

5.4% of the whole population

WIRADJURI

Region	voting members	non-voting members
Wiradjuri	2,402 (94%)	444 (16%)

So Wiradjuri has **2,846** members

This is **13%** of the NSWALC membership

WIRADJURI REGION

LAND CLAIMS

LALC	LODGED	GRANTED	REFUSED	FINALISED	INCOMPLETE	PROPERTIES
Albury & District	150	3	49	6	92	10
Bathurst	521	34	86	24	377	38
Brungle Tumut	110	3	18	1	88	28
Condobolin	715	4	157	20	534	31
Cowra	369	12	72	19	266	15
Cummeragunja	136	0	19	2	115	73
Deniliquin	121	10	12	1	98	54
Griffith	269	46	13	51	159	11
Hay	162	3	2	0	157	21
Leeton & District	102	10	37	12	43	3
Moama	56	0	0	1	55	173
Murrin Bridge	328	84	45	6	193	31
Narrandera	276	19	81	12	164	18
Onerwal	143	5	13	0	125	40
Orange	294	12	82	5	195	52
Peak Hill	963	29	154	14	766	21
Pejar	249	4	38	4	203	8
Wagga Wagga	179	18	29	0	132	31
Wamba Wamba	37	2	10	0	25	7
West Wyalong	410	5	26	7	372	10
Young	558	3	13	2	540	24
TOTALS	6148	306	956	187	4699	699

WIRADJURI REGION

Region

Wiradjuri

Property

\$ 46,659,446*

Source: NSWALC 2010-11 Financial reports



The following presentation has been drawn from LALC contributions submitted from the Wiradjuri Region. The examples featured in this presentation are not a definitive list of LALC initiatives within the Region, but are representative of the LALCs that have chosen to participate in the following presentation.



HISTORY

Shared history is a highly valued form of Wiradjuri knowledge. Belonging is not based on achievements or abilities. Rather, it requires participation in events and relationships over time.

[Two Steps Forward, Three Steps Back, a Wiradjuri land rights journey.]



HISTORY

A Shared History

Today the Wiradjuri Region is 21 LALCs strong and represents the largest region in the NSW Land Rights network. The region which can trace its foundations back to a meeting on 28 November 1982 held at Erambie, Cowra (*Wiradjuri Land Council formation*).

Prior to 2007 the Wiradjuri Region consisted of the following 16 LALCs:

- > *Bathurst (formerly Windradyne)*
- > *Brungle-Tumut*
- > *Condobolin*
- > *Cowra*
- > *Griffith*
- > *Hay*
- > *Leeton & District*
- > *Murrin Bridge*
- > *Narrandera*
- > *Onerwal*
- > *Orange*
- > *Peak Hill*
- > *Pejar*
- > *Wagga Wagga*
- > *West Wyalong*
- > *Young*



HISTORY

It was moved at a meeting of the undersigned on 28.11.82 at 2.30 pm at Erambie West Cowra that:

WE THE UNDERSIGNED SUPPORT THE SETTING UP OF A WIRADJURI LAND COUNCIL.

Richard Murray	"Erambie" West Cowra
Wilfred Daley	ERAMBIE.
D. Fitzgerald	"
Helen Murray	Cowra
Geoffrey Murray	"Erambie" Cowra.
Alamy Bell	1-Yellow St Orange.
Hal Simpson	Cowra
J. Ingram	Cowra
J. Bell	
C.S. Munnell	Town Common Wellington.
J. Simpson	Koorik Housing Co Cowra
J. Lee	Erambie
Mary Daley	Erambie
M. Fitzgerald	ERAMBIE
Dulcie Ingram	Erambie, Cowra.
Maude Murray	7 Ballao St Cowra
E. Long	9 Teragala St Bourke
Kenneth Whyman	40 TROCKAN AVE Wagga. Wagga.
Dot Whyman	40. Tasakan Avenue, Wagga Wagga.
W. Murray	2. Thomas Street Casarra N.S.W.
J. Ingram	Erambie
H. Bankslett	Cowra.
John Doolan	Erambie
Q. Lee	Erambie
M. Morrison	Erambie

Signatories to the setting up of the Wiradjuri Land Council in 1982.



HISTORY

A Shared History

As a result of the 2007 Land Rights amendments, the Wiradjuri region was merged with the former Murray River region which comprised:

- > *Albury & District LALC, established April 1984*
- > *Cummeragunja LALC, established January 1984 under the name of Yorta Yorta LALC.*
- > *Deniliquin LALC established April 1984*
- > *Moama LALC, established April 1984 &*
- > *Wamba Wamba LALC, established April 1984*



LAND



30
YEARS



**CELEBRATING
LAND RIGHTS**
1983 - 2013

30 YEAR FIGHT: OUR LAND, OUR RIGHTS

LAND

- There are 10 Discrete communities (former reserves & missions) across the Wiradjuri Region.
- The Water & Sewerage project has been rolled out on the 10 discrete communities in the Region.
 - The project has been a positive experience that has had a greater impact than just on the water and sewerage infrastructure, particularly the MoUs with Shire Councils. *The MoU is more than just a document, it's a Memorandum of Action Plans (Denese Williams, Brungle-Tumut LALC)*
- However the cost and condition of infrastructure remain an issue for LALCs with discrete communities.



LAND

The farce is that, three years after the Act, even the simplest land claim 'disappears' into the maze of bureaucracy. A claim can take months, often years.

[NSWALC Annual Report, 1985-86]



LAND

Land Claims Strategy

- The Land Claims Strategy has delivered strategic determinations and grants that have impacted on the network in a positive manner by creating precedence cases including the 2008 Wagga Wagga High Court win & the recent successful Wamba Wamba appeal in relation to a Travelling Stock Route.
- It has been the Regional experience anecdotally that the Land Claims process appears to be more streamlined in recent years to the benefit of LALCs.
- However concerns remain within the network regarding the rate of successful grants.



LAND

Strategic Purchases

➤ The Leeton Gardens Motel was purchased in 1987 on behalf of the Leeton & District LALC. Ownership passed to NSWALC in 1990, but the LALC fought hard to eventually have the title returned to the LALC. The Motel is generating passive income for the LALC.

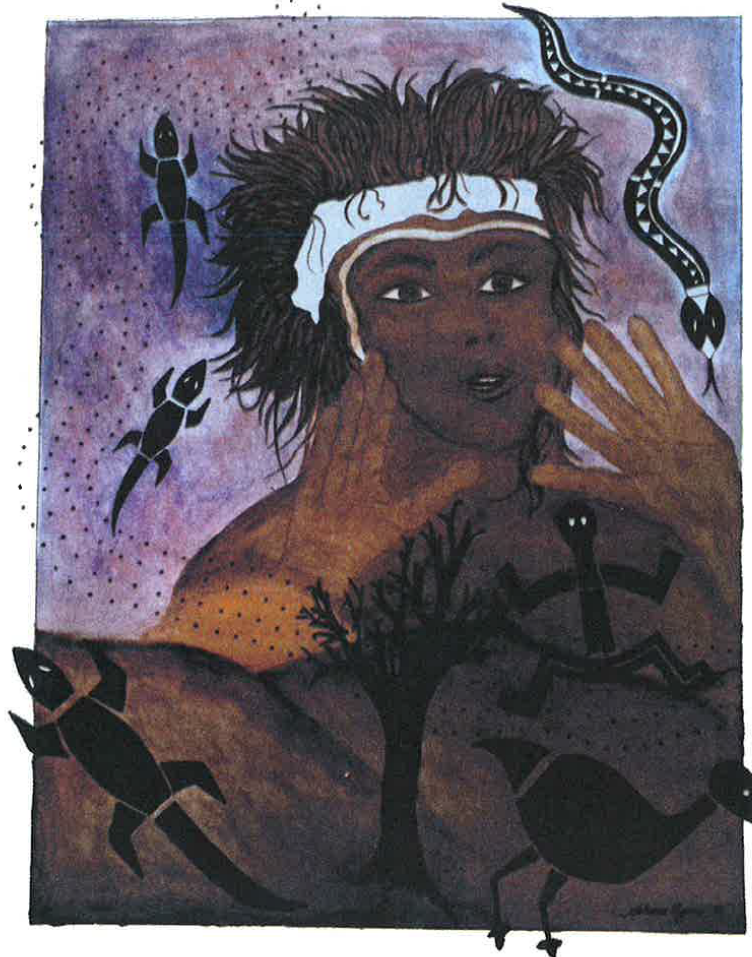
Social Housing Stock

➤ The Region contains 342 houses across 20 Social Housing Schemes.



LAND

"BAROOGA KARRAI"



"BACK IN THE HANDS OF ITS RIGHTFUL OWNERS"

Commemorating the return of Traditional Land to the Windjuri Nation

Windjuri Regional Aboriginal Land Council 1987

30
YEARS



CELEBRATING
LAND RIGHTS
1983 - 2013

30 YEAR FIGHT: OUR LAND, OUR RIGHTS

LAND

NSWALC Property Divestment Process

➤ **Barooga Karrai** is a 9,000 hectare (26,000 acre) mixed grazing and cropping farm which was purchased by the Wiradjuri Regional Land Council in 1986 due to its cultural significance to the Wiradjuri Nation. Ownership of the property passed to NSWALC in 1991 and with the consent of stakeholder LALCs, NSWALC has embarked on a process to transfer ownership of Barooga Karrai to Murrin Bridge LALC, whose boundaries the property lies within.



LAND

NSWALC Property Divestment Process



➤ NSWALC has also transferred ownership of 52 & 54 Chanter Street, Moama to the Moama LALC



GOVERNANCE



Albury & District LALC Board



GOVERNANCE

2011 Election Results

- 156 Board Members were elected at the 2011 General LALC elections across the Wiradjuri Region comprising of 98 Female Members and 58 Male Members.
- 1 Wiradjuri LALC elected an all female member Board comprising 6 members.
- There are 15 female Chairpersons presiding over the 21 Wiradjuri LALCs.

The Next Generation of Leaders

- 27 Board Members elected under 30 years of age across the Wiradjuri Region.



GOVERNANCE



**Moama LALC Board Meeting with the
Minister for Aboriginal Affairs**



GOVERNANCE

Some comments from Wiradjuri Region LALCs about the 2007 change to a LALC Board structure:

- *The move from pre-2007 governance model to the Board structure was not an easy transition in the beginning.*
- *The Board structure is considered to be a more empowering model.*
- *The structure promotes a greater level of equity, transparency and fairness.*



GOVERNANCE

Comments on the 2007 change to a LALC Board structure:

➤ *Governance Training has provided the opportunity for members to gain an understanding about roles and responsibilities and develop capacity in leadership. (284 Board Members across the region have received governance training since the 2007 elections)*

➤ *The introduction of the Community, Land & Business Plan has provided a strategic pathway for the LALCs based on the aspirations and vision of the Members.*



ECONOMIC DEVELOPMENT

The focus on economic development has been on generating socio-economic outcomes including, employment, training, income and health and well-being. Examples include:

- **Hay LALC** has developed an MoU with Nari Nari Tribal Council addressing resource & knowledge sharing including Earthmoving Equipment Hiring service.
- **Murrin Bridge Wines** commenced harvesting in 2001 and became only the second indigenous winery in the world and Australia's first and only.



ECONOMIC DEVELOPMENT



Brungle-Tumut LALC - Community Partnership Bus Hiring Scheme was identified in the LALC CLBP as a membership aspiration to create a revenue stream for the LALC as well as to provide a service to the community of Brungle and Tumut.



ECONOMIC DEVELOPMENT

Orange LALCs **Yugaway** development plans to deliver a 4-4.5 star Motel/Hotel establishment on OLALC land that includes 120 rooms and 120 seat restaurant including outdoor terrace, bar and entertainment area.



ECONOMIC DEVELOPMENT

➤ **Wamba Wamba LALC** has focused on creating long lasting employment opportunities through developing relationships with services that provide job ready training and linking trainees with employment opportunities through relationships with the Local Shire and Job Network.

➤ **Albury & District LALC** looks at the quantitative and qualitative changes in the economy. Such actions can involve multiple areas including development of human capital, critical infrastructure, regional competitiveness, environmental sustainability, social inclusion, health, safety, literacy, housing and other initiatives.



CULTURE & HERITAGE

Ancient remains laid to rest

The ancient remains of an Aboriginal man discovered near Lake Cargelligo last year were laid to rest with a ritual re-burial last Wednesday, in the presence of Aboriginal elders, school children and government representatives.

The discovery, which was made close to an old water-course near Lake Cargelligo by a former local man, has been hailed as the greatest discovery in more than half a century.

The Aboriginal communities of Condobolin and Murrin Bridge gathered to lay their ancient ancestor to rest last week, when the remains were returned to the burial site.

It is hoped the age of the remains will be determined by the end of this month.

Originally, experts thought the remains could potentially predate 'Mango Man', a skeleton found at Lake Mango in 1969 and believed to date back to the Pleistocene epoch, between 40,000 and 68,000 years ago.

It is now believed they are not likely to be quite as old as that, but experts agree the remains found near Lake Cargelligo are still very old and a significant find.

It has been reported the remains indicate the man was seven feet (2.15 metres) tall with feet 15 feet.

An official announcement of the age will be made when more accurate information comes to hand.

Office of Environment and Heritage (OEH) archaeologist, Phil Purcell, said it was an important event for the local community.

"These remains were discovered in February 2011 by a Ngemba man working on a local property," Mr Purcell said.

"Their condition led us to



■ This ancient Aboriginal burial site was the subject of a ritual re-burial last Wednesday attended by the Aboriginal communities of Murrin Bridge and Condobolin.

believe that this burial was very old and may hold further secrets which could add to our knowledge of an ancient landscape and culture.

"After consultation with the Aboriginal community, it was agreed that the remains could be more comprehensively examined.

"The results of this work are still to be finalised, however, it is time for this man to be re-

turned to his resting place.

"We do know he was tall and thick set, with evidence of fighting injuries on his left wrist," he added.

North West Regional Manager of the Country Culture and Heritage division of OEH, Christian Hampson, said the local Aboriginal community had embraced this discovery from the day it was revealed.

"Our Aboriginal Heritage

Conservation staff have been working in close partnership with the Murrin Bridge and Condobolin communities to ensure the research has been consistent with their requirements," he explained.

"They have supported the research to take place and see it as a foundation for revitalising and promoting Aboriginal culture and heritage in the local area and as an important story

to be told of the prehistory of their people.

"Currently the research is being finalised and once completed the results will be reported back to the community.

"Aboriginal community members assisted our staff and scientists in the field, which has seen them develop valuable skills in site recording, surveying, skeletal identification, conservation and excavation techniques.

"Their involvement came full circle when they also participated in the ceremony to re-bury their ancestor.

"The remains were returned with a re-burial ceremony, led by the local Aboriginal community, on the property where they were discovered.

"The property owner has been fully supportive of this process," Mr Hampson added.



Scar Tree – Moama LALC Area

30 YEARS

CELEBRATING LAND RIGHTS
1983 - 2013

30 YEAR FIGHT: OUR LAND, OUR RIGHTS

Murrin Bridge Repatriation

CULTURE & HERITAGE

LALC Culture and Heritage activities within the Wiradjuri Region include protection of culture and country through sites works and NAIDOC day celebrations as well as:

➤ *Repatriation of our people removed from country*

➤ *Declaration of Aboriginal Places* with 11 Aboriginal Places being declared within the Wiradjuri Region to date including:

- Koonadan (*Leeton & District*),
- Oak Hill (*Onerwal*),
- Algeboia (*Cummeragunja*) and
- Brungle Cemetery (*Brungle-Tumut*).



CULTURE & HERITAGE



Algeboia Settlement – Cummeragunja LALC



CULTURE & HERITAGE

Specific LALC Examples

➤ **Wamba Wamba LALC** is strengthening it's network with the Wakool Shire and the Swan Hill Council, both now start all meetings with Welcome to Country and also fly the flag. The LALC and Shire Council communicate on a regular basis over the protection of all Significant sites.

➤ **Wagga Wagga LALC** has been focusing on changing the perception in Wagga Wagga through relationships with the City Council around Australia Day to inform society about the Indigenous perspective and inter-generational impact of January 26.



CULTURE & HERITAGE

➤ **Orange LALC** Gaambuwananha Ngurambang has been funded through the federal governments Biodiversity fund 2012-2017. Orange LALC are one of a a small number of Aboriginal Land councils ever funded with this type of grant. The LALC has secured \$2.24M over a five year period to achieve Biodiversity outcomes on land within the OLALC boundary.

OLALCs “through Black Eyes” approach aims at achieving outcomes with three main focuses:

1. Our culture is included in our approach and respected.
2. Our people and our community have inclusive real input into the planning, delivery and long term goals.
3. That the LALC assists our people to reconnect and heal.



COMMUNITY



Hay LALC School Visits

30
YEARS
CELEBRATING
LAND RIGHTS
1983 - 2013
30 YEAR FIGHT: OUR LAND, OUR RIGHTS

COMMUNITY

➤ **Hay LALC** operates a community benefit scheme which was approved in February 2011. The scheme offers financial assistance and scholarships to members which is funded by income from the LALCs commercial operations.

➤ **Wagga Wagga LALC** was granted NSWALC approval under the SHAPE Policy in October 2012 to operate the LALC Social Housing Scheme.

Examples of others LALC initiatives that provides benefits or support within community include:

➤ **Murrin Bridge** riparian project which involves a revegetation and fencing project provides employment for six workers.



COMMUNITY

- The **Brungle-Tumut LALC** Senior Broadband program, provides a free service for elders to learn how to operate a computer utilising a family tree project and language course as the key learning projects.
- The **Leeton & District LALC** coordinates Community Service visits to Leeton including Griffith AMS, Rivmed Dental Clinics, Murrumbidgee Medicare Local, Centrelink, Binaal Billa Family Violence Prevention Legal Service, Family Case Management.
- **Moama LALC** operates an Op-shop for the benefit of the community.
- The **Deniliquin LALC** is focused on empowering and growing its membership. The LALC is committed to delivering the highest quality services to the Membership and to continuously work with integrity, provide culturally appropriate services and projects.



COMMUNITY



➤ **Brungle-Tumut LALC** held an Elders Ball in 2007 which provided some community elders the first opportunity in their lifetime to attend an official ball.



COMMUNITY

➤ Orange LALC – The Wamarra Project

The Wamarra project was developed by OLALC to address the shortage of skilled Aboriginal Labour within the building industry. The shortage was identified during OLALC's investigations into building a Motel, the Yugaway project, on OLALC owned Land.

The Wamarra project consisted of partnerships with DEEWR, VERTO, AA, Master Builders NSW and Cadia Valley Operations.

OLALC staff developed the soft skills program that sat beside the core modules required for participants to receive a Certificate II in Construction.

The program was funded for 30 participants; however OLALC enrolled 40 and graduated 39.

Out of these 39 who all received a Certificate II in Construction: 7 completed RPL's and gained Certificates 1 & II in Carpentry, this will allow them to apply for a Handy man license.

1 participant received his Cert III Carpentry.

[The Wamarra Project](#)



COMMUNITY



Wamarra – Childcare Centre Cubby House



Wamarra – Car Port

COMMUNITY



Albury & District Local Aboriginal Land Council



Murrin Bridge 60 year celebration (2009)





CONTRIBUTIONS / SOURCE

Albury & District LALC

Brungle – Tumut LALC

Deniliquin LALC

Hay LALC

Leeton & District LALC

Moama LALC

Orange LALC

Wagga Wagga LALC

Wamba Wamba LALC

Two Steps Forward, Three Steps Back, a Wiradjuri land rights Journey

NSW Atlas of Aboriginal Places,

[http://www.environment.nsw.gov.au/
AboriginalPlaces/index.htm](http://www.environment.nsw.gov.au/AboriginalPlaces/index.htm)

