

February 2016

U.S. ETP Monthly Flash

NYSE Arca U.S. Exchange Traded Products (ETP)

Highlights from February 2016

- › In February, 11 new ETPs listed on NYSE Arca
 - At the end of February, 1,564 ETPs were listed on NYSE Arca

- › US ETP notional volume represented 30.13% of all CTA issues in February 2016

- › US ETP daily average turnover was approximately \$93.33 billion in February 2016

- › NYSE Arca was at the NBBO 89.52% of the time, leading all US exchanges

- › NYSE Arca had 21.40% of all US ETP trading volume, leading all US exchanges

NYSE Arca U.S. Exchange Traded Products (ETP)

Top 10 Most Actively Traded Securities in the U.S (by Turnover Volume) February

Symbol	Name	Product Type	Consolidated Trading Volume	Consolidated Turnover Volume (\$)	Average Daily Trading Volume	Average Daily Turnover Volume (\$)
SPY	SPDR S&P 500 ETF Trust	ETF	2,977,977,124	\$565,022,061,784	148,898,856	\$28,251,103,089
QQQ	PowerShares QQQ Trust, Series 1	ETF	944,242,908	\$94,193,625,596	47,212,145	\$4,709,681,280
FB	Facebook, Inc. Class A	Stock	883,568,349	\$93,420,813,503	44,178,417	\$4,671,040,675
IWM	iShares Russell 2000 ETF	ETF	829,759,508	\$82,217,323,314	41,487,975	\$4,110,866,166
AAPL	Apple Inc.	Stock	849,939,163	\$81,245,719,270	42,496,958	\$4,062,285,964
AMZN	Amazon.Com Inc	Stock	124,144,797	\$65,322,691,209	6,207,240	\$3,266,134,560
GOOGL	Alphabet Inc. Class A Common Stock	Stock	67,647,477	\$49,521,214,244	3,382,374	\$2,476,060,712
GOOG	Alphabet Inc. Class C Capital Stock	Stock	64,367,114	\$45,773,844,939	3,218,356	\$2,288,692,247
MSFT	Microsoft Corp	Stock	868,838,276	\$44,570,658,544	43,441,914	\$2,228,532,927
BAC	Bank of America Corporation	Stock	3,571,521,197	\$44,132,469,691	178,576,060	\$2,206,623,485

Top 10 Most Actively Traded ETPs in the U.S. (by Turnover Volume) in February

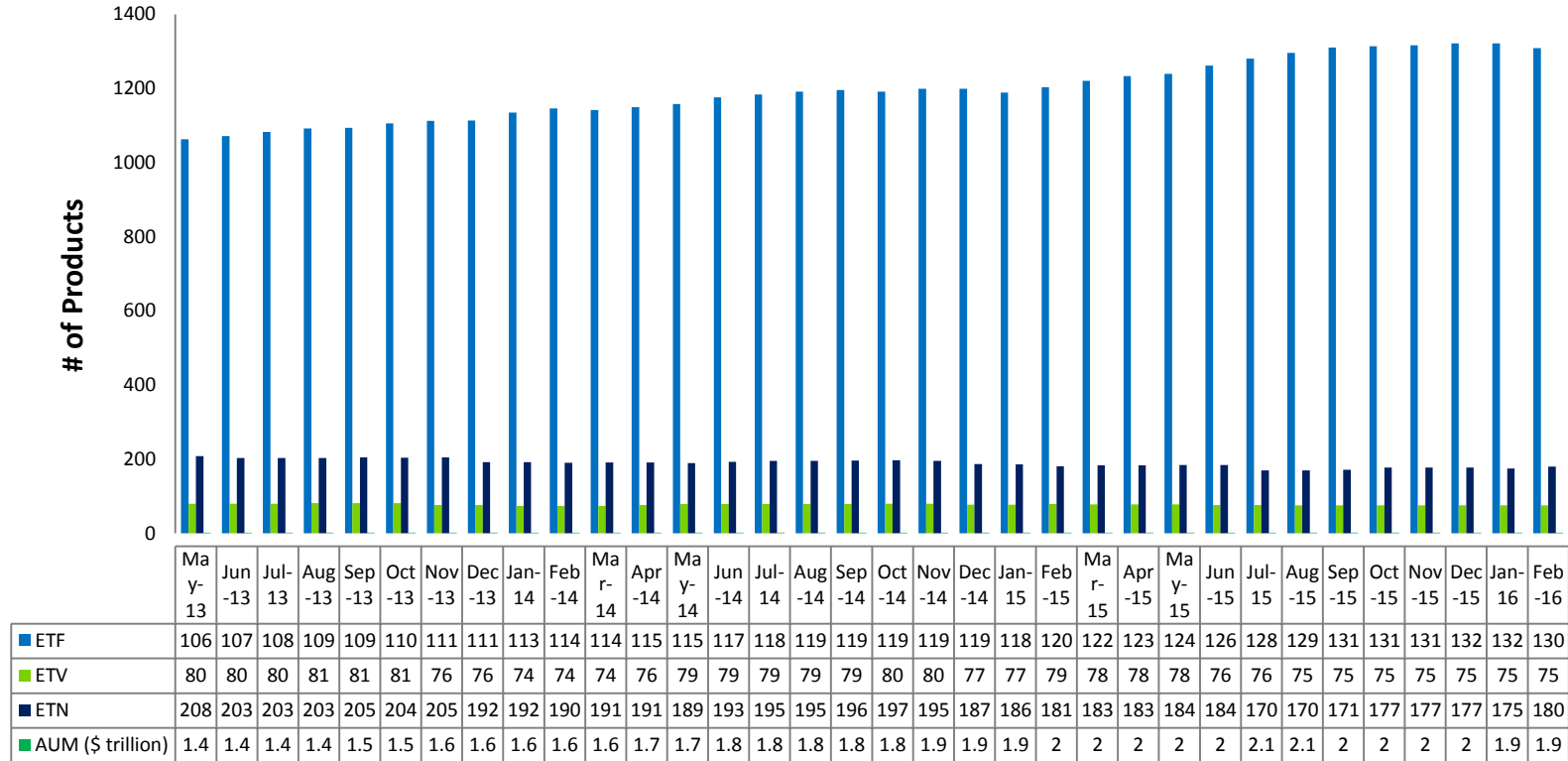
SPY	SPDR S&P 500 ETF Trust	ETF	2,977,977,124	\$565,022,061,784	148,898,856	\$28,251,103,089
QQQ	PowerShares QQQ Trust, Series 1	ETF	944,242,908	\$94,193,625,596	47,212,145	\$4,709,681,280
IWM	iShares Russell 2000 ETF	ETF	829,759,508	\$82,217,323,314	41,487,975	\$4,110,866,166
EEM	iShares MSCI Emerging Markets ETF	ETF	1,417,149,101	\$42,384,184,070	70,857,455	\$2,119,209,204
GDV	Market Vectors Gold Miners ETF	ETF	2,288,052,540	\$40,211,083,087	114,402,627	\$2,010,554,154
VXX	iPath S&P 500 VIX Short-Term Futures ETN due 1/30/2019	ETN	1,492,095,232	\$39,457,672,856	74,604,762	\$1,972,883,643
GLD	SPDR Gold Trust, SPDR Gold Shares	ETF	323,868,233	\$37,387,656,385	16,193,412	\$1,869,382,819
XLF	Financial Select Sector SPDR Fund	ETF	1,649,987,616	\$34,285,080,314	82,499,381	\$1,714,254,016
XLE	Energy Select Sector SPDR Fund	ETF	602,535,993	\$33,717,563,906	30,126,800	\$1,685,878,195
EFA	iShares MSCI EAFE ETF	ETF	626,458,414	\$33,453,847,440	31,322,921	\$1,672,692,372

NYSE Arca U.S. Exchange Traded Products (ETP)

New ETP Launched on NYSE Arca in February

Symbol	Listing Date	Name	Product Type	Consolidated Trading Volume	Consolidated Turnover Volume (\$)	Average Daily Trading Volume	Average Daily Turnover Volume (\$)
PUTW	2/24/2016	WisdomTree CBOE S&P 500 PutWrite Strategy Fund	ETF	44,316	\$1,115,497	11,079	\$278,874
SOVB	2/23/2016	Cambria Sovereign High Yield Bond ETF	ETF	6,095	\$153,703	1,219	\$30,741
YMLP	2/22/2016	Market Vectors High Income MLP ETF	ETF	2,944,157	\$10,645,364	490,693	\$1,774,227
YMLI	2/22/2016	Market Vectors High Income Infrastructure MLP ETF	ETF	148,867	\$1,445,542	24,811	\$240,924
FIHD	2/22/2016	UBS AG FI Enhanced Global High Yield ETN	ETN	400,774	\$40,219,923	66,796	\$6,703,321
OILX	2/18/2016	ETRACS S&P GSCI Crude Oil Total Return Index ETN	ETN	410,602	\$10,149,933	51,325	\$1,268,742
FIEE	2/16/2016	FI Enhanced Europe 50 ETN	ETN	30,100	\$3,085,650	3,010	\$308,565
GTO	2/10/2016	Guggenheim Total Return Bond ETF	ETF	7,304	\$366,736	562	\$28,210
OIIL	2/9/2016	Credit Suisse X-Links™ WTI Crude Oil Index ETN	ETN	300,687	\$7,623,361	21,478	\$544,526
MLPQ	2/9/2016	ETRACS 2xMonthly Leveraged Alerian MLP Infrastructure Index ETN Series B	ETN	381,603	\$11,462,080	27,257	\$818,720
MLPZ	2/9/2016	ETRACS 2xMonthly Leveraged S&P MLP Index ETN Series B	ETN	21,803	\$697,858	1,557	\$49,847

NYSE Arca U.S. Exchange Traded Products (ETP)



- › As of February 2016, 1866 ETPs are listed in the US, 1564 of which were listed on NYSE Arca
- › NYSE Arca listed ETPs have a total AUM of approx. \$1.88 trillion

NYSE Arca ETPs (By Issuer)

Issuer	# of ETPs	New in February	New YTD	Turnover
Academy Funds	1			\$20,662,676
AdvisorShares	19			\$367,321,141
AlphaClone	2			\$14,084,599
ALPS	16			\$3,460,556,248
ARK	4			\$1,615,422
ArrowShares	2			\$31,412,318
Barclays	70			\$40,692,482,147
Cambria	7	1(SOVB)	1	\$34,845,948
Charles Schwab	21			\$7,552,718,332
Citigroup	3			\$3,918,559
Columbia Management	2			\$533,009
Credit Suisse	10	1(OIIL)	1	\$120,998,107
CSOP	3			\$1,737,639
Deutsche Bank	29			\$2,257,148,660
db X-trackers	35			\$4,988,102,920
Diamond Hill	1			\$4,484,793
Direxion Shares	78			\$51,368,383,456
Emerging Global	9			\$172,591,956
ETF Managers Group	7			\$199,732,147
ETF Securities	10			\$357,020,116
Exchange Traded Concepts	8			\$185,932,994
Fidelity	14			\$972,171,814
FirstTrust	44			\$14,463,822,407

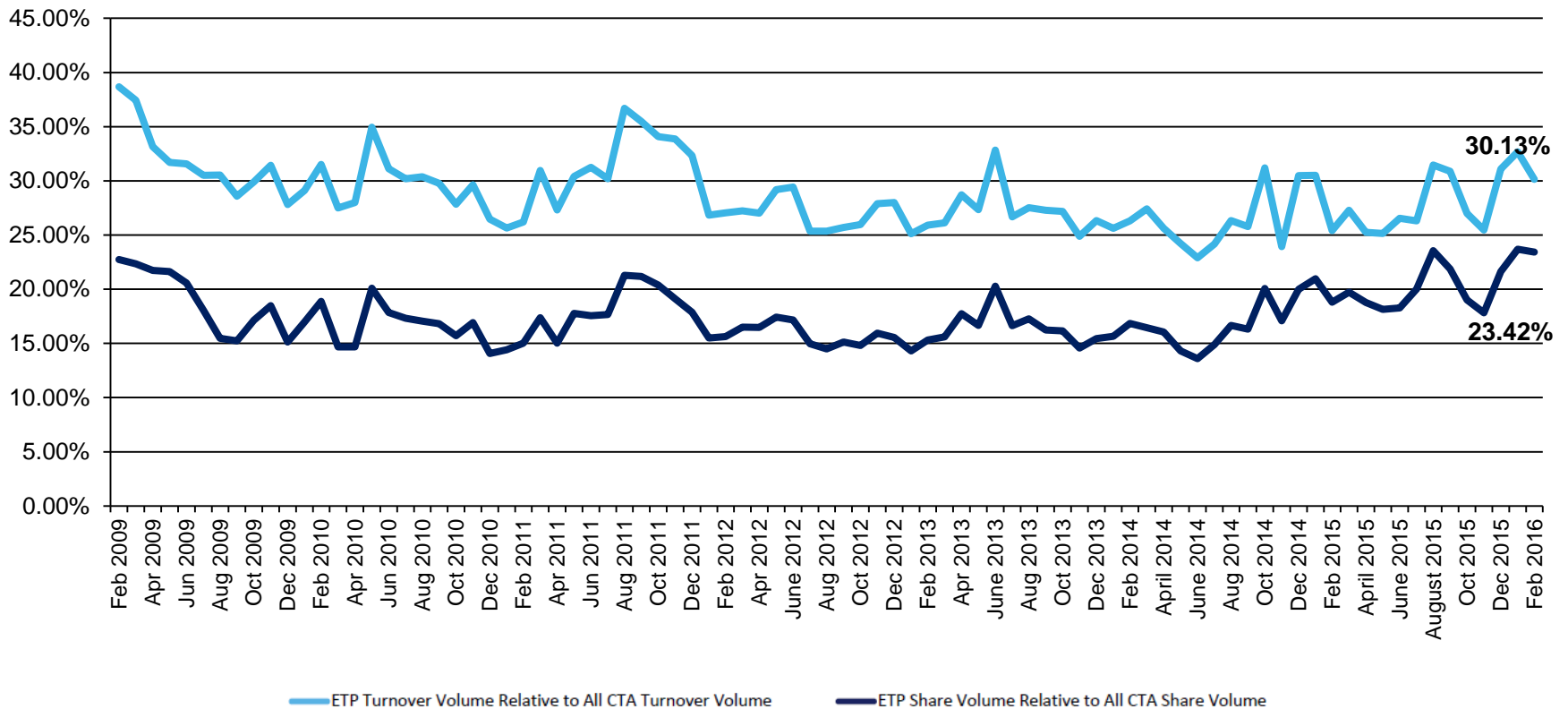
NYSE Arca ETPs (By Issuer)

Issuer	# of ETPs	New in February	New YTD	Turnover
FlexShares	17			\$1,006,687,195
Franklin Templeton	1			\$120,477,467
Global X	41			\$590,150,143
Goldman Sachs	2			\$3,467,618
Goldman Sachs Asset Management	3			\$218,899,447
Guggenheim	74	1(GTO)	1	\$7,106,451,832
Highland Funds	4			\$36,494,983
Horizons	2			\$2,354,451
HSBC	1			\$404,718
Huntington	2			\$317,054
IndexIQ	17			\$233,562,725
Invesco PowerShares	118			\$107,286,517,136
iShares	266			\$469,183,729,890
Jefferies	1			\$2,334,262
John Hancock	6			\$4,944,788
JPMorgan Chase & Co.	1			\$62,387,975
JP Morgan ETFs	5			\$2,388,525,027
Krane Shares	3			\$164,309,768
Lattice	4			\$15,773,871
LocalShares	1			\$344,509
Market Vectors	54	2(YMLP,YMLI)	2	\$59,198,096,236
Merk	1			\$18,769,140
Morgan Stanley	5			\$8,815,792

NYSE Arca ETPs (By Issuer)

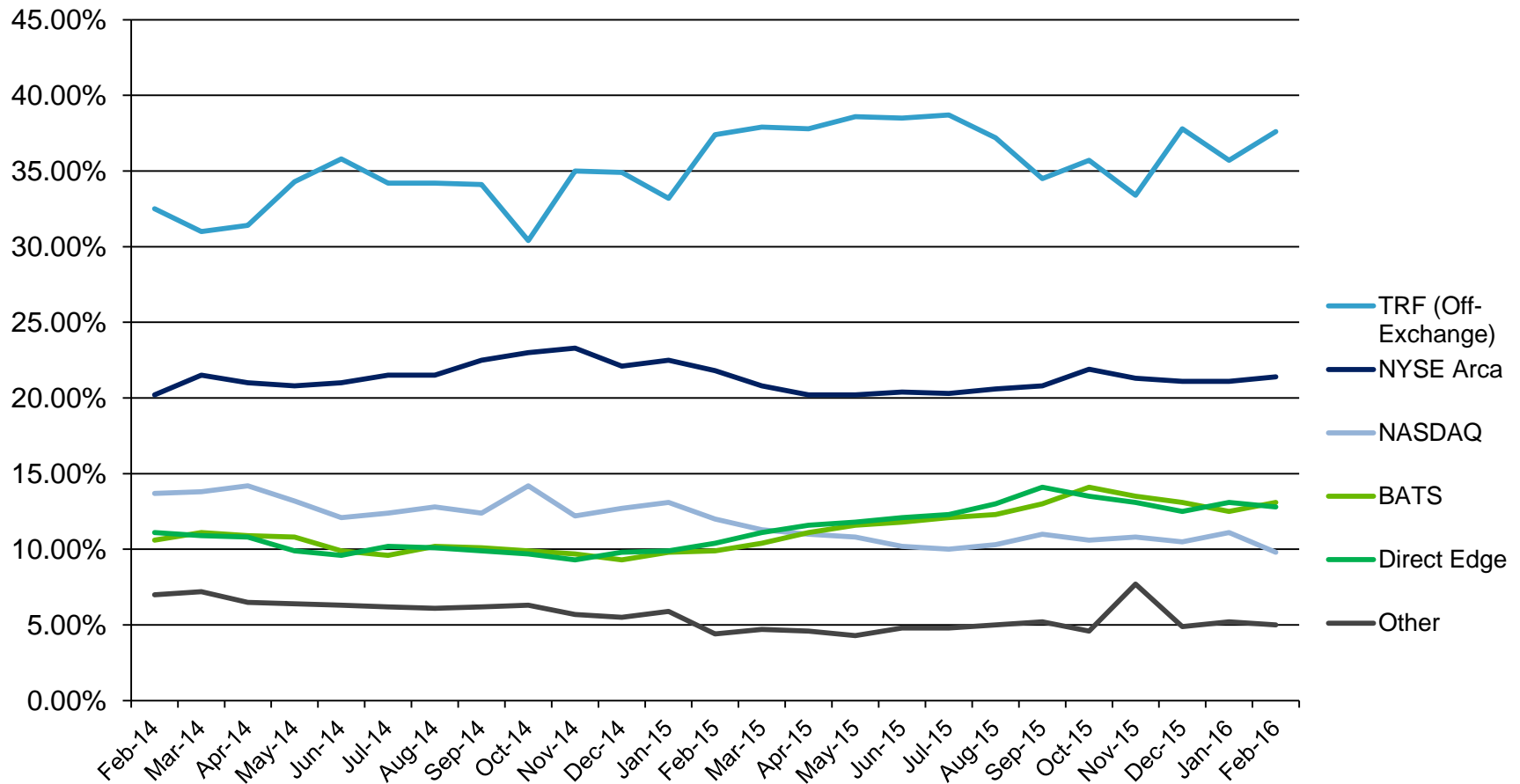
Issuer	# of ETPs	New in February	New YTD	Turnover
O'Shares	5			\$60,589,715
PIMCO	14			\$3,005,212,154
Precidian Funds	1			\$17,587,017
Principal	1			\$4,047,935
ProShares	133			\$106,976,691,722
QuantShares	5			\$26,910,514
RealityShares	1			\$2,793,491
Renaissance Capital	2			\$1,159,325
RevenueShares	8			\$104,192,241
Royal Bank of Canada	1			\$2,049,088
SPDR ETFs	158		1	\$870,513,525,515
Sprott Asset Management	5			\$374,796,580
Swedish Export Credit (SEK)	7			\$83,991,182
Teucrium	5			\$24,507,263
Tortoise	1			\$773,832
TrimTabs	1			\$108,246
UBS	48	5(FIHD,FIEE,OILX,MLPZ,MLPQ)	5	\$1,154,177,407
United States Commodity Funds LLC	12			\$11,238,580,038
U.S. Global Investors	1			\$21,134,809
Vanguard	49			\$92,613,623,539
VelocityShares	6			\$34,665,040,357
Virtus ETF Solutions	2			\$53,736,613
WBI	10			\$72,222,169
WisdomTree	64	1(PUTW)	1	\$17,149,360,744

U.S. ETP Consolidated Volumes



- › During the month of February, US ETP CADV was 2.06 billion and daily notional value was \$93.33 billion
- › By the end of February, US ETP share and notional volume represented 23.42% and 30.13%, respectively of all CTA issues

U.S. ETP Market Share by Trading Venue



- › In February 2016, NYSE Arca led all exchanges with an ETP trading market share of 21.40%
- › ETP trades occurring off-exchange in February 2016 represented 37.60%

Disclaimer

©2016 NYSE. All rights reserved. NYSE and its affiliates do not recommend or make any representation as to possible benefits from any securities or investments, or third-party products or services. Investors should undertake their own due diligence regarding their securities and investment practices.



About Us

- › For more information, visit www.nyse.com/products/etp-funds-etf
- › Contact us at: etf@nyse.com