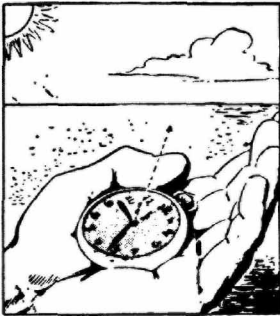


# DID YOU KNOW . . .



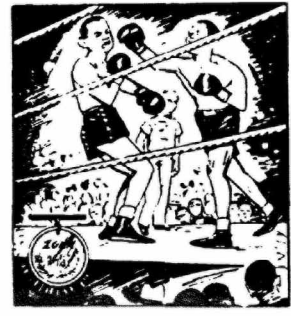
A clock is a compass. Hold clock (or watch) face up and point the hour hand toward the sun. Halfway between the hour hand and 12 is due south



By studying the folds and hummocks of Antarctic ice, scientists hope to gain clues to the ways the Alps, Himalayas, and other mountains were formed



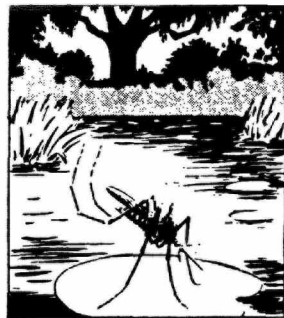
Dice are probably the earliest gaming devices. They can be traced to the early days of the Roman Empire.



ZONK is the first non-white magazine to present gold medals for the most outstanding boxer of the year. The first gold medal was awarded to Jake Tuli in 1952



Grapes have been cultivated so long that their place of origin cannot be determined. Egyptians evidently grew grapes and made wine 6,000 years ago.



Mosquitoes plague man from the Tropics to the Arctic Circle. Only the female mosquito bites, and her principal food is not human blood, but plant nectar.



Man still is in the dawn of progress. His best steam locomotive is but eight per cent efficient, his latest diesel and petrol engines barely 25 per cent.



In Roman times, maps were guarded as atomic weapons are today, and for much the same reason. Accurate maps of roads and harbours were extremely rare. Copying them was treason

Note: In the Southern Hemisphere the direction between the hour hand and 12 o'clock is NORTH.

## PRETTY WEDDING AT PURFLEET

A very pretty pink and blue wedding took place at the U.A.M. Church, Purfleet, one Saturday afternoon recently, when Miss Ina Lay Slater, the second daughter of Mrs. Selma Slater and the late Daniel Slater was joined in Holy Matrimony with Mr. Henry Maher.

The bride wore a pretty morning blue dress, attractively complemented with pink and white accessories.

The ceremony was performed by Pastor K. W. Wilson, of Taree, in his characteristic friendly manner.

The Matron of Honour, Mrs. Peter Paulson, of Forster, an older sister of the bride, wore a pretty pastel pink nylon dress, with blue accessories.

Mis Dell Slater, a younger sister of the bride, acted as bridesmaid. She wore a pretty pink nylon dress with white accessories.

Mrs. Slater, mother of the bride, wore a navy blue dress with white accessories and Mrs. Maher, the mother of the bridegroom, chose a cyclamen-pink dress with white trimmings.

As the register was being signed, Mr. Barwon-Parry rendered the beautiful solo, "I'll Walk Beside You".