



tpc { winter } BREW vol.13
2006

welcome

Welcome to TPC WINTER BREW. By the time you read this winter will be well & truly over, unless you live in Tassie like the TPC community. Sorry about our tardiness with this newsletter, but we've been busy closing down our venue, as well as re-thinking & re-ordering the way we gather & engage in mission. Let us explain further.....

In 2001 TPC originated with a small group of 9 people. We met weekly as a small church & spent lots of time together connecting with the community in third places. Over time we grew to a sizable group & had to decide if we would meet regularly as one big group or whether we would create a network of smaller communities. At the time we swayed toward one large group as it was still early days plus we were young & just finding our feet. This decision led us to rent a venue we called 'onetwelve' (112 Liverpool St, Hobart). We agreed the premises had to be for further connection & mission, & so over a period of 4 years we shaped the venue into a place for live music, community forums, art exhibits, community fund raisers & other similar activities. In hindsight 'onetwelve' was a great way to build familiarity & intimacy with a significant number of people. There are many great

Third Place Communities Seasonal Newsletter {winter 2006}

Third Place Communities is a collective of missionaries & mission-communities who share & incarnate Jesus in local third places through participating in the social rhythms & practicing the presence of Christ.



PAGE 1

memories and stories we could share with you. Hopefully one day we'll get the chance. But life changes! As a community we decided we could no longer operate the venue responsibly largely due to our financial & time resources. It would take too much time & required money we did not have. And so on Friday June 30, 2006 we held our final gig. What a night! Hobart's funkier four, 'The John Wayne Instruction Manual' provided the tunes & hundreds of people ate, drank, chatted & danced their way into the early hours of the morning. A local radio station interviewed us & recorded part of the night which was later broadcast over the airwaves. So many people over the course of the night asked us to reconsider, with every third person saying how much they'll miss the place. For TPC it was an emotional ending. After all the punters left, we stood around the bar tired, emotional & reflective, but nonetheless proud of the past 4 years. We shuffled our way home, slunk into bed, only to get up a few hours later to start the painful process of moving out. By 4pm Saturday onetwelve was vacant. The only things left behind to suggest we'd once been there was the paint we splashed on the walls, the shagpile carpet we glued to the bar & the sign on the front door. The memories however, we'll take into the future. They'll guide us forward.



A key TPC mission with numerous interconnected ministries came to an end. But coupled with endings are always new beginnings. And so we were now faced with an opportunity to rethink the way we gather as a church & meaningfully connect with the community. Anticipating this change the TPC group worked toward re-structuring our community & mission. This was a lengthy & complex process as there was many people & variables to consider. Inspired by RED network, & after much collaboration, brainstorming & prayer we decided to organise TPC into a network of small church units we're calling households. The organising principal for the households is mission, which is our primary calling, but taking into account people's lifestyles, natural rhythms, existing connections & potential for mission.

TPC households

In a nutshell Households comprise the basic gathering of church. They can meet anywhere—homes, parks, cafés, etc. And they can meet anytime. The smaller unit of community will give space for genuine friendship & discipleship to take place. Because of size, the smaller group will also be better positioned to focus on a specific mission & be better situated to multiply. We believe that this model will be highly adaptive & responsive to its context. Households will meet minimum twice a month as a unit &

“A great deal more failure is the result of an excess of caution than of bold experimentation with new ideas. The frontiers of the kingdom of God were never advanced by men and women of caution.”

Oswald Sanders



once a month with the tribe. In their own unique way, households will eat together, explore scripture, develop spirituality, pray, share communion, foster a collective focus, & provide accountability for TPC practices. The households will be coordinated by a couple who will be responsible for the gathering & mission activity of each group. All households are encouraged to be committed to multiplying themselves periodically by starting a new household.

TPC tribe

The Tribe is essentially the collection of all the TPC households. The TPC Tribe will gather once a month to eat, celebrate, inspire each another, share stories, & generally building a sense of camaraderie & broader connection.

So there you have it, our suggested way forward. Of course there's far more theological & missiological depth guiding our path than is explained in this letter. Due to limited space we simply can't describe it here fully. If you'd like to know more please contact us, we'd be happy to chat. Crazy or as simple as it may be, we're going to give it a red-hot go. If it doesn't work we'll simply try something else. In experimenting our way into the future, we are encouraged by Oswald Sanders quote above:

TPC profile

// who's new to TPC? Amy McCormack is, here's why...

1// How did you find out about TPC?

Lots of little 'coincidences', all leading me to join this wonderful community. I'd just moved back to Hobart after a couple of years away & I was looking for a church family. My Dad & I went along to a local Church together (though he rarely goes to church) to see John Smith from the God Squad. There was a man from the church who Dad had gone to high school with & he came up & had a chat. He found out I was working at the hospital & started telling me about this little Christian community, how there were a couple of members who worked at the hospital, & how he knew one of the leaders of this community. Through this man, & the random connection, I came to meet Daz & Ant & very soon after came to TPC. Have never known such a unique community. What a gift.



2// What interested you enough to become a missionary with us?

After coming along once, I was so taken by the natural-ness of the group, the freedom & celebration of life & the underlying missional intent, that it was difficult not to become part of the community. The purposefulness of TPC's vision is very Jesus-focused, not religion/tradition focused, & I think that's a breath of very welcome fresh air. It's a breath I'm inspired by & have been changed by. Thank God.

3// What are your hopes for the future in being part of TPC?

Twofold I guess. One, that I would continue to grow in my relationships with other TPC members, continue to nourish & be nourished & encourage each other on the journey. Two, that being part of TPC would sharpen & spur me on in missional action; there are dreams that I've been thinking about for years that even in this short time, have been stirred & fuelled.

Geilston Bay High

// a TPC mission within the school & surrounding communities

The GBH mission continues to grow with more young people & TPC personnel getting involved. This mission is three-fold. Firstly, we run a subject within the school curriculum called Life Skills. This subject functions primarily as a mentoring program for students who are by & large disengaged from the education process. In this subject TPC volunteers work alongside students on practical projects such as skateboard making, renovating bikes & giving them away, cooking, exercise programs & the like. Life Skills provides an easy context for mentoring & offers these young people positive life experiences. Along the way the students learn to work with one another, acquire new skills, & most importantly develop self esteem & a positive outlook. Secondly, TPC organises activities beyond



school hours for these young people such as a surfing program, skateboard riding, camps, fishing trips & other similar activities. Recently, the Christian Surfers group has partnered us with the surfing & skateboarding programs. All these activities provide a context in which we can develop friendships & begin to connect with the student's families & friends. Thirdly, because our hope is to expand this mission into the local community, we're working toward relocating a group from within TPC to live in the area. This we hope will be the start of a new localised Christian community. What follows, is a snapshot of what's been happening of late. If you'd like to hear more about the mission please feel free to give Anthony a call or email on 0438 554 957 or aedler@optusnet.com.au.

life skills

For the majority of first term, the students made skateboards, gluing, clamping, & shaping their boards. They also designed & painted their own graphics. Many finished with what looked, felt & rode like a professional board. All students thoroughly enjoyed the project, being extremely proud of their finished skaters. This project has been one of the most enjoyed by the students so far. Currently students learning to cook & then we'll complete the term with an exercise program including weights.

surfing & skating

These activities have been hugely successful in connecting disadvantaged young people with adult role models. More young

people & adults have become involved this year with a regular group of 15 to 20 invading the beaches & local skate parks.

winter camp

Definition of Fun: camping outdoors in the middle of winter? This may not be your typical definition but 9 students along with 7 TPC volunteers did just that at Fortescue Bay in the middle of July. Thankfully, the weather was uncharacteristically superb for that time of year. Everyone enjoyed the bushwalks, games, food, camp fire, the companionship & most of all the jelly eating contest.

bikes project

In term 3 the Life Skills group will be restoring old bikes as we did last year. We will again give these away to disadvantaged families for Christmas. We are currently looking for bikes that we can restore (preferably BMX bikes over mountain bikes), so if you know of some lonely bikes that need some T.L.C. please contact us.



TPC profile

// Anthony Edler asks volunteer Nick Damen a few questions...

Q// Why did you volunteer for the life-skills program with the young people from Risdon Vale & surrounding areas?

I was keen on learning more about mission & evangelism. We had already been surfing with some of the young people from the area through the TPC & CS surf days. From this I saw an opportunity to develop friendships with the guys, so I volunteered.

Q// Have you found teaching the young people to surf a good way to build relationships?

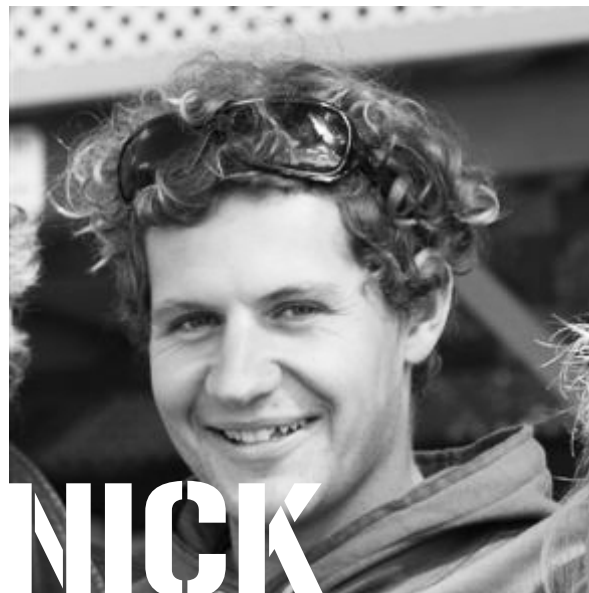
Yeah, it's something I enjoy doing & the guys & girls also enjoy learning to surf. It seems more natural to build friendships in everyday activities like surfing. It's an easy way to get to know people really well. It's also a good way to earn trust & respect from these young people.

Q// So far what have you learnt about mission & evangelism?

That God doesn't rock up when I go surfing or walk into a room. He's already been working in people's lives & continues to do so after I'm around. I've learnt to shift my focus to where God already is creating openness in people's lives. Instead of trying to catch & jam grasshoppers into jars I'm now happy to hang out in the garden.

Q// How might this impact your life for the future?

Well I've definitely been challenged & some of my ways have been refined & re-focused. It's been & will continue to be a positive impact for sure



Brew // Vol. 13 Winter 2006

Third Place Communities
PO Box 4632, Bathurst St, Hobart, 7000
info@thirdplacecommunities.com
www.thirdplacecommunities.com
+61 (0) 3 6234 8487
+61 (0) 416 221 853

If you would like to support TPC financially
please contact us on the above details

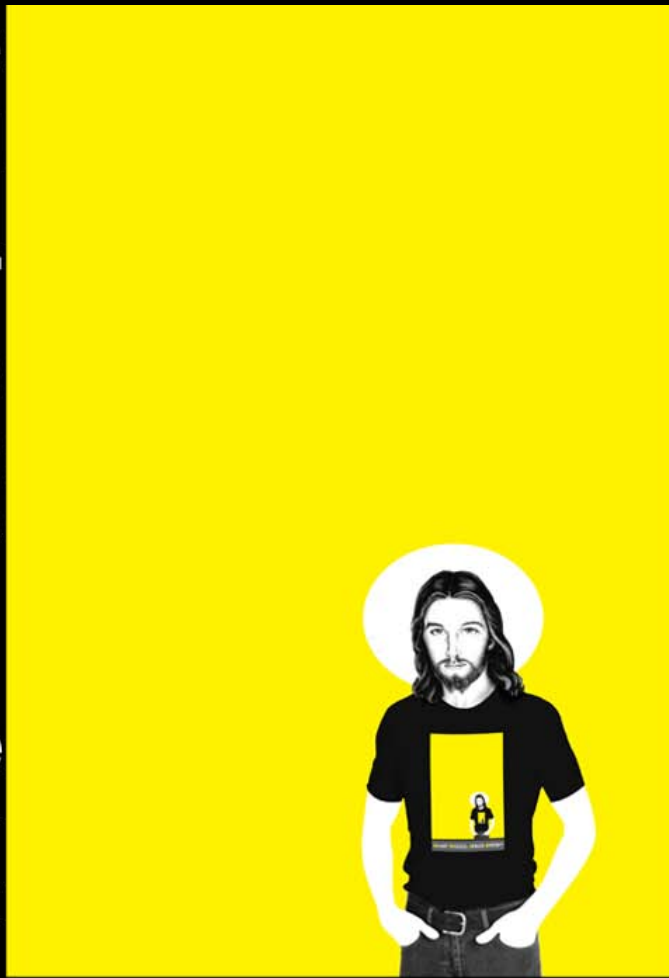
design tom smith // www.tommygunsmith.com



to download a WWJB order form go
to www.tommygunsmith.com/wwjb

the
long
awaited
WHAT
WOULD
JESUS
BREW?
t-shirt!

feel free
to forward
on to
other fashion
aficionados!



they're
snappy,
and
printed
on the
top
quality,
ethically
made,
NoSweat
label

WHAT **WOULD** **JESUS** **BREW?**