



## **Oxley Creek Catchment Partnerships for Success**

Anne CLARKE

Oxley Creek Catchment Association, Australia

# Outline

- Catchment of Oxley, Location
- Mission Statement and Organisation of Oxley Creek Catchment Association (OCCA)
- Research undertaken
- Our collaborative partnerships approach
- Sustainability into the future – both for the catchment and the organisation

# The Oxley Creek Catchment



## **Mission for OCCA:**

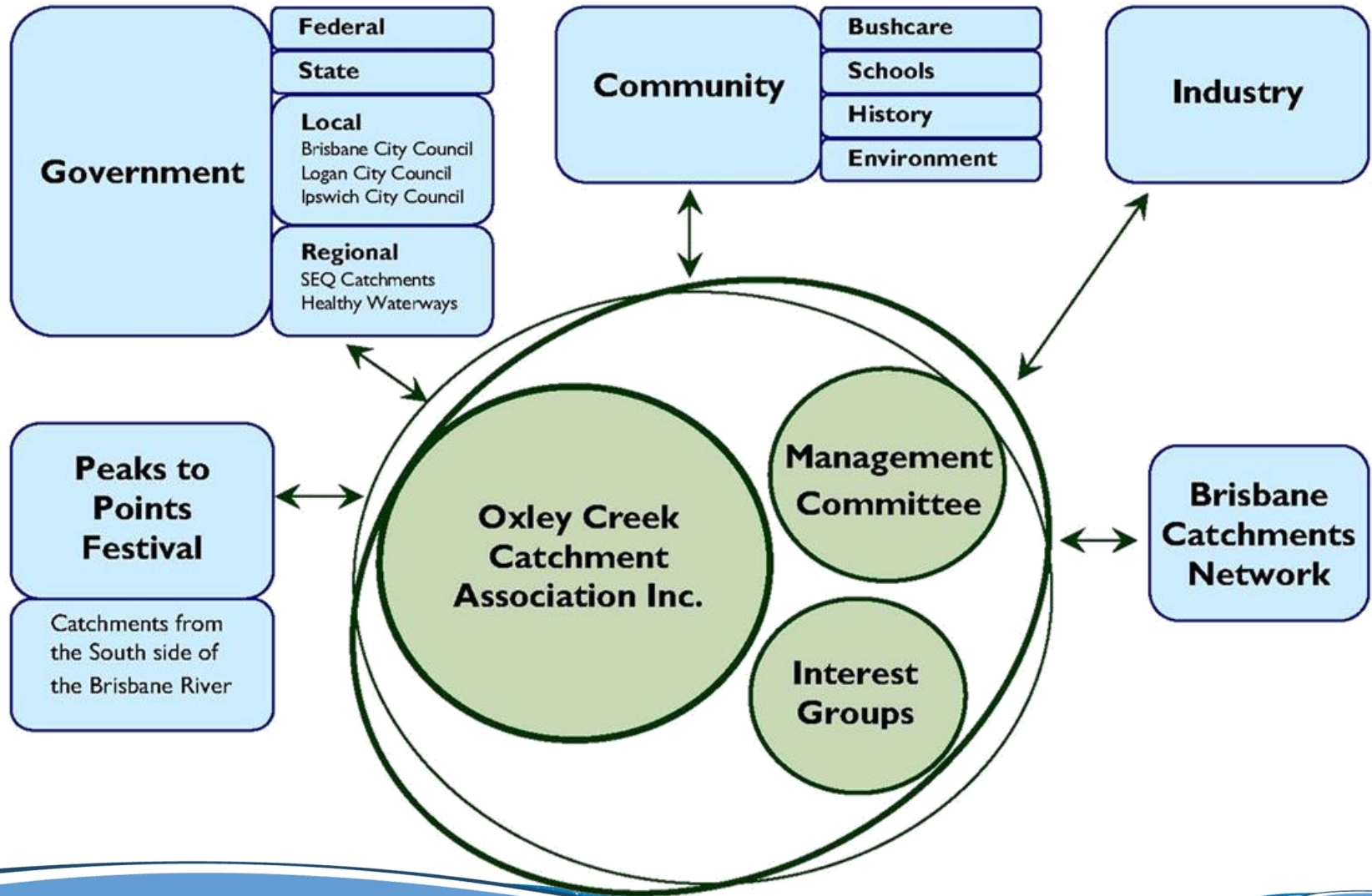
To **protect** & **enhance** the natural resource values of the Oxley Creek Catchment.

The Jagera name for Oxley Creek  
is Benarrawa

Dreaming Statement: “ Benarrawa is  
flowing. We dream that the people will listen  
to the land and to each other”



# Organisational relationships



# The Oxley Creek Catchment Association (OCCA)

- Began 1996: Integrated Catchment Management (first urban ICM in Qld)
- Research



- State of Oxley Creek Catchment and Water and Land use Impact Analysis
- Oxley Creek Catchment Management Plan (CMP) developed
- Derived Action Plans for common areas

# Challenges

Small grazing; lots of rural residential with horses;

Nodes of new urban development

Major infrastructure dissecting land and waterways

Mining voids, to landfills, to recycling pits

Floodplain with golf courses

Keeping intact vegetated corridors

2 Sewage Treatment Plants

Industry





# Challenges with Partnerships

**Government**

**Federal, State, Local**

**Regional Bodies**

**Community**

**Industry**





# The role of industry partnerships

## Outcomes for OCCA

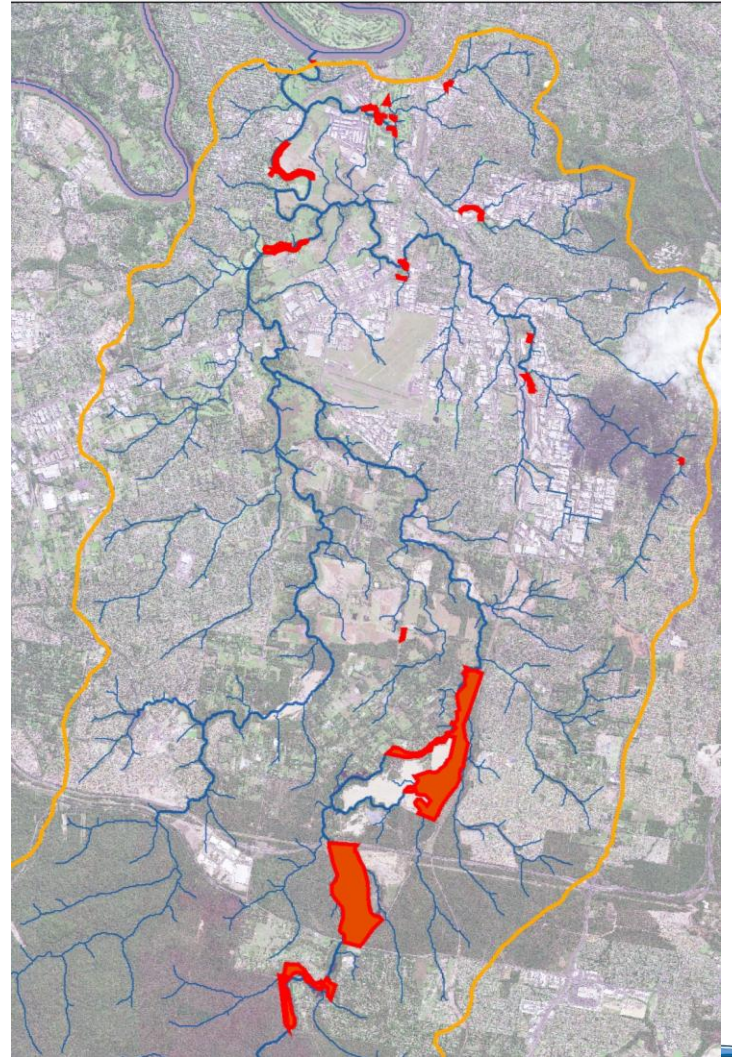
- Our catchment centre, a stable base of operations, meeting place, library
- Establishment of Biodiversity Services Unit (BSU) operations-commercial-led to greater knowledge of catchment
- BSU brings money to the mix and allows OCCA to be more independent
- Nursery establishment with CTC and Nyanda SHS



# The role of industry partnerships

## Outcomes for the Catchment:

- Rehabilitation of **200 hectares** of catchment and **12.5km** of waterway





# Other benefits

## Outcomes for the Catchment:

- Installation of nestboxes
- Protection of wetlands
- Much greater knowledge of the catchment therefore better protection
- More people better informed
- Greater possibilities unfold



# Industry Involvement

- **Cemex (Readymix)**
  - Long term commitment
- **Larapinta, MBP**
  - Enhancing wildlife corridors
- **Sanitarium-** natural regen'n
- **CreekWATCH**
  - Bluescope Steel, QR, RACQI, CSR Building Products, SkillsTech





# Our success has depended on:

- Involved passionate volunteers
- Engagement with partners
- Research directing Action Planning
  - Interest groups with (SMART) Action Plans = Strategic Direction
- Being bold and responsive
- Embracing opportunities (within limits)
- Awareness raising, celebration
- Monitoring & evaluation & adaptation

# **Sustainability – looking to the future for OCCA and catchment**

- Our own Catchment Centre
- More committed opportunistic volunteers
- Career paths for staff

## Catchment

- Increased protection for veg. corridors
- Flora overpasses to reduce pinch points
- More partnerships with landholders plus

**Thank you!**