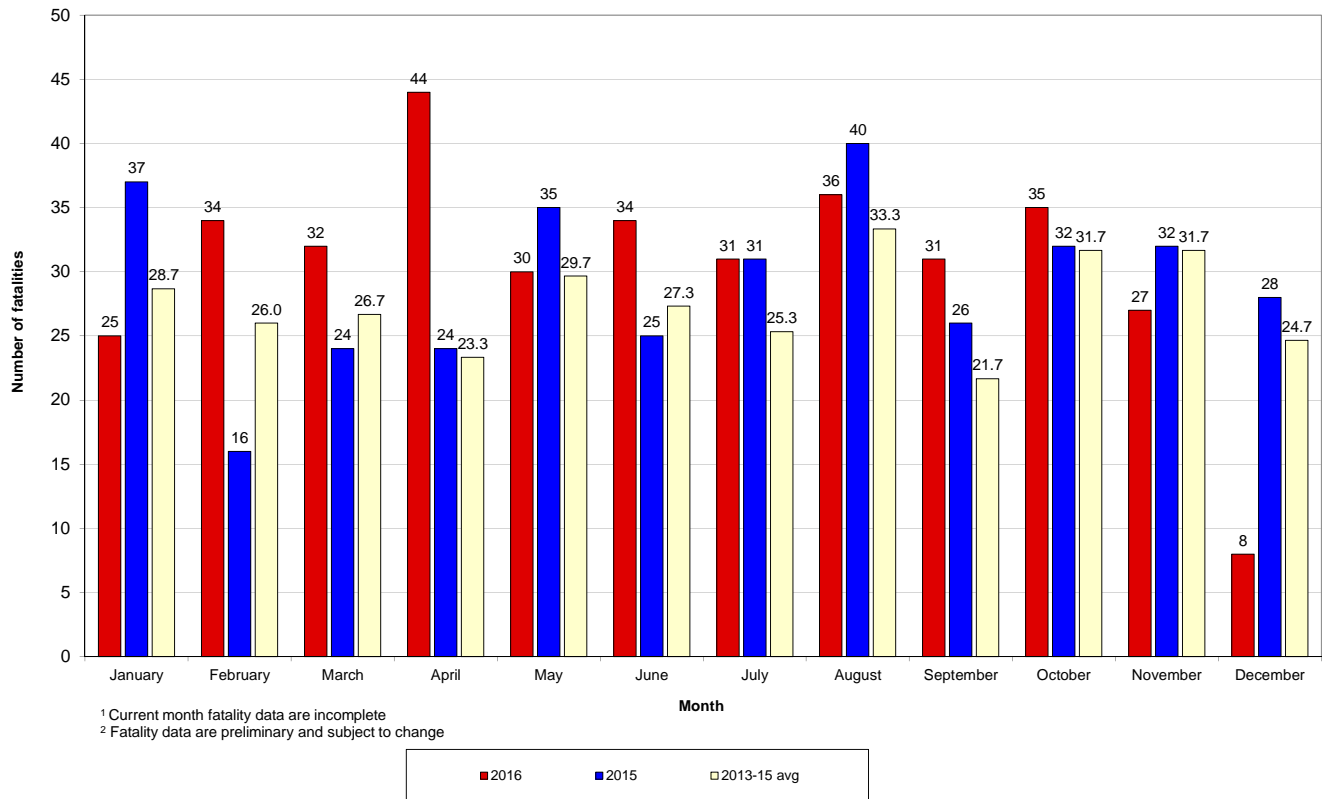


| | 2016 | 2015 | +/- | % change |
|-------------------------|------|------|-----|----------|
| Calendar year to date | 367 | 326 | 41 | 13% |
| December to date | 8 | 4 | 4 | 100% |
| 12-month period to date | 391 | 339 | 52 | 15% |

Fatalities 12-month moving total - 2011 to date



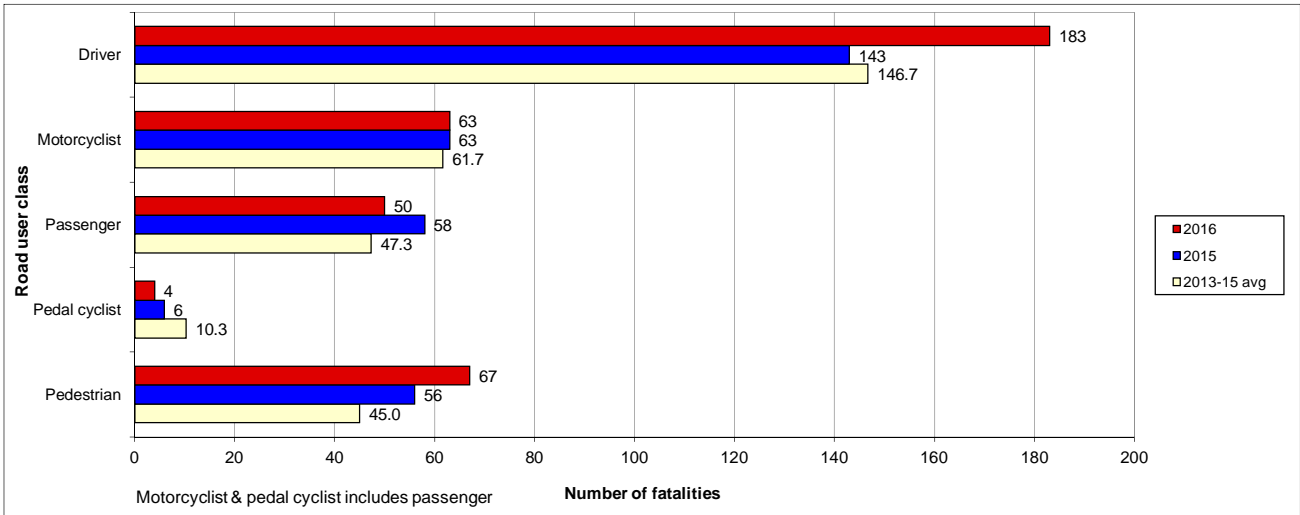
Road fatality comparative statistics by month¹ for 2015, 2016² and the average for the 3-year period 2013-2015



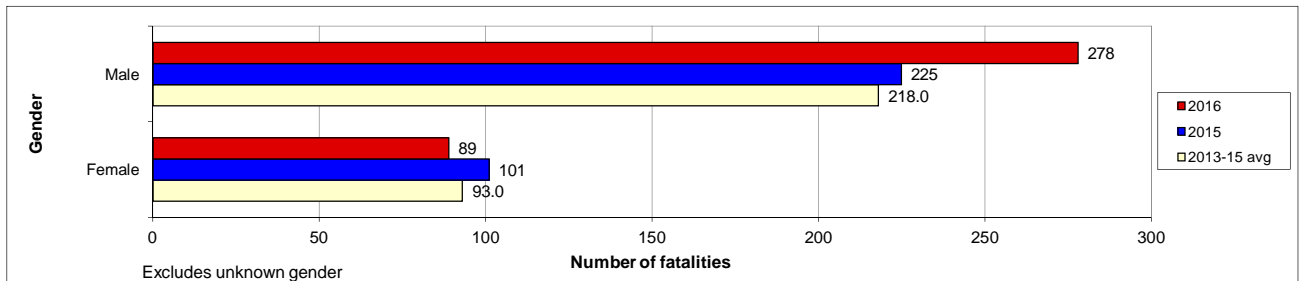
Preliminary Data - Note: Fatalities will be removed from statistics if subsequent Police or Coronial investigation shows that they did not fall within National reporting guidelines. Fatalities will be added from a crash occurring prior to today's date where a person subsequently dies within 30 days or the crash is reported late. Fatalities are deaths which occurred within 30 days of a crash as a result of injuries received in the crash. The crash must have occurred within the surveyed road reserve.

Road fatality comparative statistics for the period 01 January to 06 December 2015, 2016² and the average for the same period in 2013, 2014 and 2015

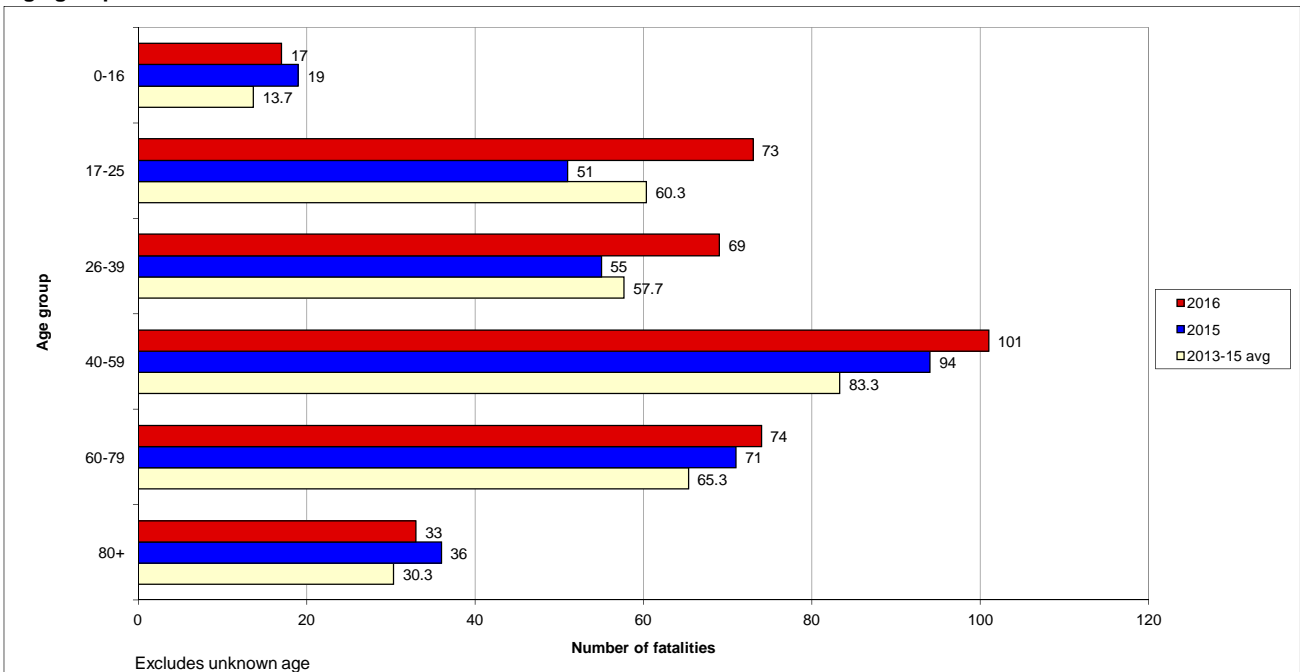
Road user class



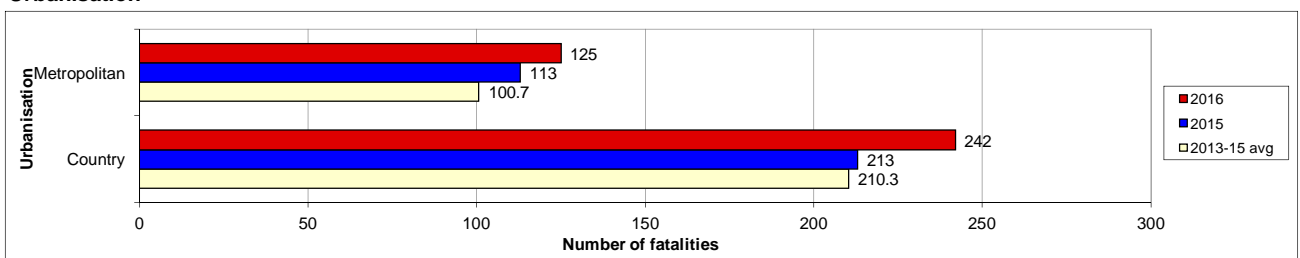
Gender



Age group



Urbanisation



² Fatality data are preliminary and subject to change

Road fatality comparative statistics for the period 01 January to 06 December 2015, 2016² and the average for the same period in 2013, 2014 and 2015

Road user class

| | 2016 | 2015 | +/- | % change | 3-year average |
|---------------|------|------|-----|----------|----------------|
| Driver | 183 | 143 | 40 | 28% | 146.7 |
| Motorcyclist | 63 | 63 | 0 | 0% | 61.7 |
| Passenger | 50 | 58 | -8 | -14% | 47.3 |
| Pedal cyclist | 4 | 6 | -2 | -33% | 10.3 |
| Pedestrian | 67 | 56 | 11 | 20% | 45.0 |

Motorcyclist & pedal cyclist includes passenger

Gender

| | 2016 | 2015 | +/- | % change | 3-year average |
|--------|------|------|-----|----------|----------------|
| Male | 278 | 225 | 53 | 24% | 218.0 |
| Female | 89 | 101 | -12 | -12% | 93.0 |

Excludes unknown gender

Age group

| | 2016 | 2015 | +/- | % change | 3-year average |
|-------|------|------|-----|----------|----------------|
| 0-16 | 17 | 19 | -2 | -11% | 13.7 |
| 17-25 | 73 | 51 | 22 | 43% | 60.3 |
| 26-39 | 69 | 55 | 14 | 25% | 57.7 |
| 40-59 | 101 | 94 | 7 | 7% | 83.3 |
| 60-79 | 74 | 71 | 3 | 4% | 65.3 |
| 80+ | 33 | 36 | -3 | -8% | 30.3 |

Excludes unknown age

Urbanisation

| | 2016 | 2015 | +/- | % change | 3-year average |
|--------------|------|------|-----|----------|----------------|
| Metropolitan | 125 | 113 | 12 | 11% | 100.7 |
| Country | 242 | 213 | 29 | 14% | 210.3 |

² Fatality data are preliminary and subject to change

Road Toll Update for NSW

up to and including
Tuesday, 06 December 2016

Fatalities advised since last update issued: 1
Fatalities excluded since last update issued: 0

| | CALENDAR YEAR TO MIDNIGHT 06 December | | | | | 12-MONTH PERIOD ENDING 06 December | | | | |
|----------------------|---------------------------------------|-----------------|-----------|-------------------|-----------|------------------------------------|-----------------|-----------|-------------------|-----------|
| | 2016 (Prelim) | 2015 (Final) | DIFF. | 3-YEAR AVERAGE | DIFF. | 2016 (Prelim) | 2015 (Final) | DIFF. | 3-YEAR AVERAGE | DIFF. |
| Fatal crashes | 343 | 303 | 40 | 291 | 52 | 366 | 314 | 52 | 308 | 58 |
| Fatalities | | | | | | | | | | |
| Driver | 183 | 143 | 40 | 147 | 36 | 195 | 150 | 45 | 153 | 42 |
| Passenger | 50 | 58 | -8 | 47 | 3 | 52 | 60 | -8 | 52 | 0 |
| Motorcyclist* | 63 | 63 | 0 | 62 | 1 | 67 | 65 | 2 | 65 | 2 |
| Pedestrian | 67 | 56 | 11 | 45 | 22 | 72 | 58 | 14 | 48 | 24 |
| Pedal cyclist* | 4 | 6 | -2 | 10 | -6 | 5 | 6 | -1 | 10 | -5 |
| Other | 0 | 0 | 0 | 0 | 0 | 0 | 0 | 0 | 0 | 0 |
| TOTAL KILLED | 367 | 326 | 41 | 311 | 56 | 391 | 339 | 52 | 329 | 62 |

* Includes passengers

FINAL 2015 TOTALS: Fatal crashes 326 Fatalities 350

Preliminary Data -Note: Fatalities will be removed from statistics if subsequent Police or Coronial investigation shows that they did not fall within National reporting guidelines. Fatalities will be added from a crash occurring prior to today's date where a person subsequently dies within 30 days or the crash is reported late. Typically, these variations may result in a statewide annual decrease of up to 12 fatalities from the initial preliminary figure.

[Click here](#) for more information about traffic crash statistics

[Click here](#) for more information about the Centre for Road Safety