

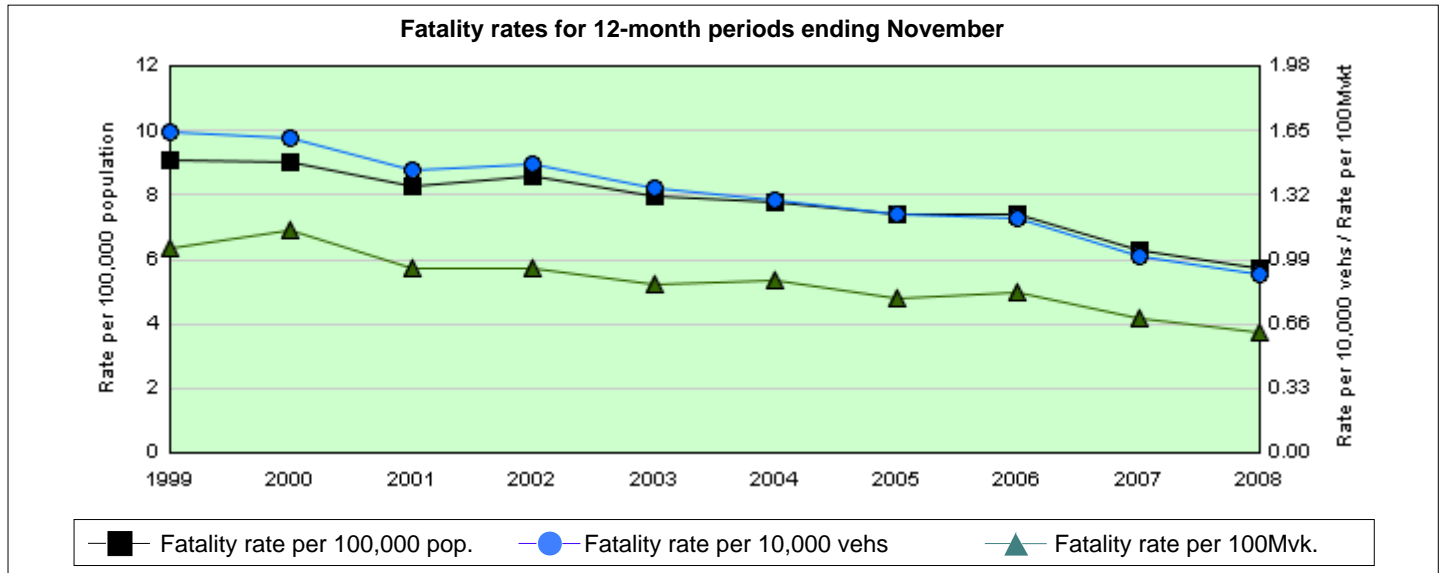


# PRELIMINARY TRAFFIC CRASH DATA

**MONTHLY BULLETIN**  
**November 2008**

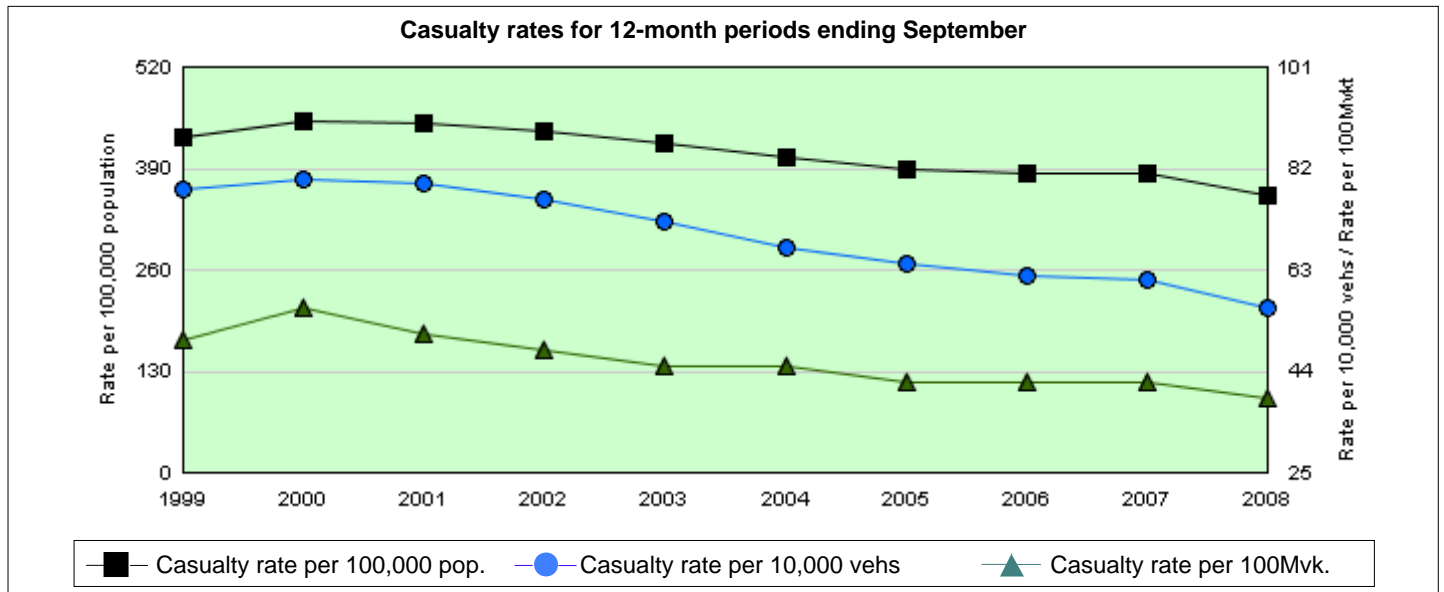
## Fatality rates for 12-month period ending November 2008

Number of fatalities	400
Rate per 100,000 population <sup>1</sup>	5.8
Rate per 10,000 vehicles <sup>2</sup>	0.9
Rate per 100 million vehicle kilometres travelled <sup>3</sup>	0.6



## Casualty rates for 12-month period ending September 2008

Number of casualties*	24,759
Rate per 100,000 population <sup>1</sup>	356
Rate per 10,000 vehicles <sup>2</sup>	63
Rate per 100 million vehicle kilometres travelled <sup>3</sup>	39



<sup>1</sup> Based on preliminary estimated population data

<sup>2</sup> Based on RTA vehicle registration data

<sup>3</sup> Travel estimates post 2006 are based on long term growth in ABS estimated travel (1998 to 2006) extrapolated from the last published survey (2006)

\* Based on preliminary data supplied by the NSW Police from the Computerised Operational Policing System (COPS) database. Casualty statistics are 1 month in arrears.

# TABLE OF CONTENTS

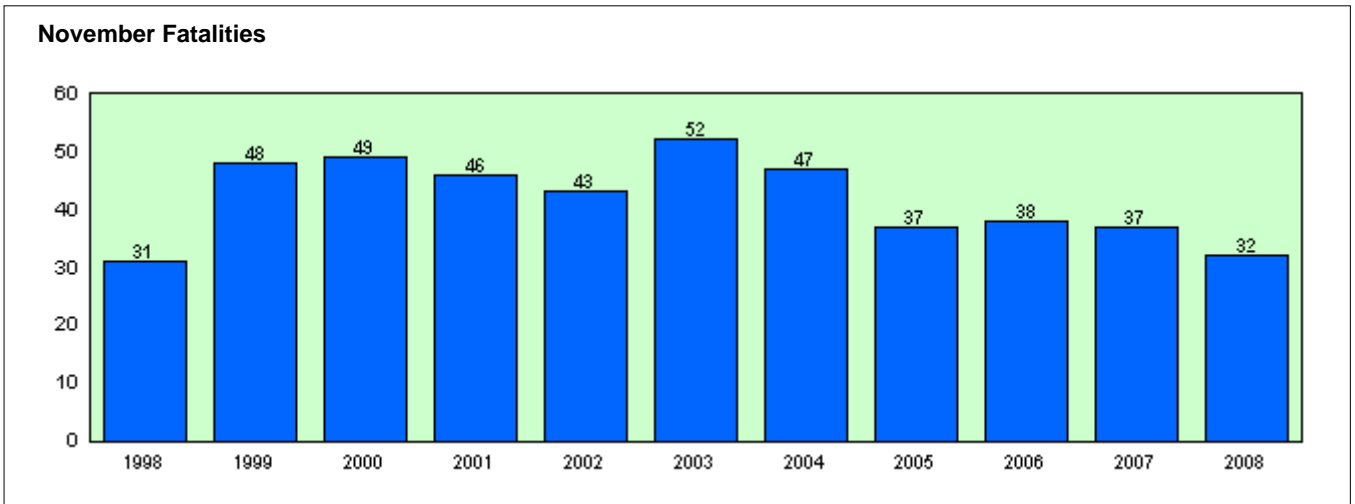
<b>SECTION 1: MONTHLY COMPARISON AND KEY POINTS</b>	1
<b>SECTION 2: MONTHLY STATISTICS</b>	2
2.1 FATALITIES	2
2.2 FATAL CRASHES	3
2.3 COMPARISON WITH OTHER STATES	4
2.3.1 Fatalities	4
2.3.2 Fatal Crashes	4
<b>SECTION 3: TRENDS</b>	5
3.1 FATALITIES - OVERALL TREND	5
3.1.1 Number of fatalities for 12 months ending November 2008, road user class	5
3.1.2 Number of fatalities for 12 months ending November 2008, sex of fatality	5
3.1.3 Number of fatalities for 12 months ending November 2008, age of fatality	6
3.1.4 Number of fatalities for 12 months ending November 2008, urbanisation	7
3.1.5 Number of fatalities for 12 months ending November 2008, RTA Region	7
3.2 FACTORS INVOLVED IN FATAL CRASHES	8
3.2.1 Number of fatal crashes for 12 months ending November 2008, speeding involvement	8
3.2.2 Number of fatal crashes for 12 months ending November 2008, fatigue involvement	8
3.2.3 Number of fatal crashes for 12 months ending September 2008, alcohol involvement	8
3.3 SAFETY DEVICE USAGE OF FATALITIES	9
3.3.1 Number of road vehicle fatalities for 12 months ending November 2008, safety device usage, road user class	9
3.4 MOTOR VEHICLE CONTROLLERS INVOLVED IN FATAL CRASHES	10
3.4.1 Number of motor vehicle controllers involved in fatal crashes for 12 months ending November 2008, sex of controller	10
3.4.2 Number of motor vehicle controllers involved in fatal crashes for 12 months ending November 2008, age of controller	10
3.4.3 Number of motor vehicle controllers involved in fatal crashes for 12 months ending September 2008, alcohol involvement	10
3.5 CASUALTIES - OVERALL TREND	11
3.5.1 Twelve months comparison	11
3.5.2 Year-to-date comparison	11

## Explanatory Notes

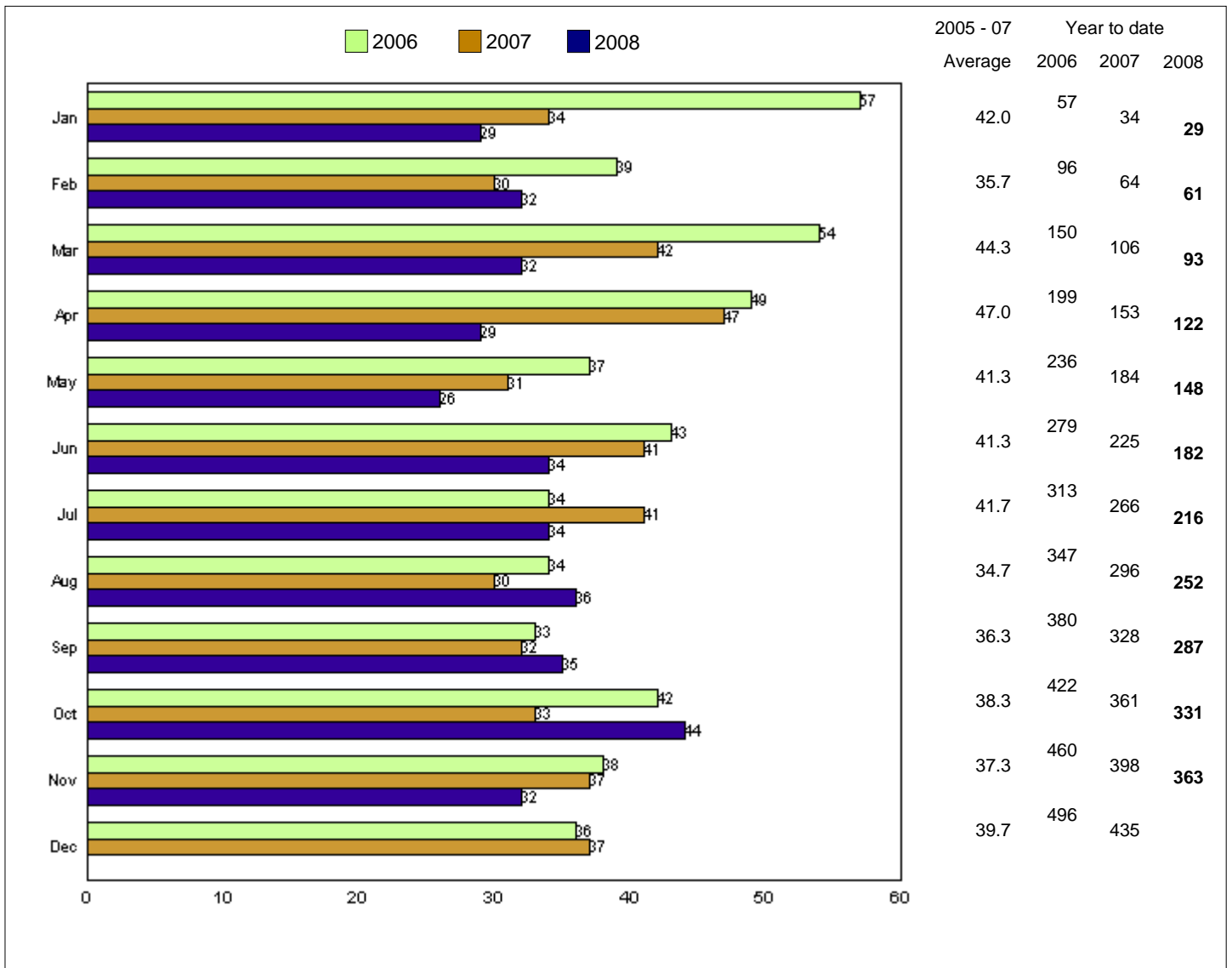
- \* Data are preliminary and are compiled on the first working day of the month.
- \* Casualty figures reported in Section 3.5 are based on preliminary data supplied by the NSW Police Force. They are comprised of all casualties, including fatalities.
- \* Vehicle kilometres travelled are estimates based on changes in fuel consumption since the Australian Bureau of Statistics Survey of Motor Vehicle Use.

**SECTION 1: MONTHLY COMPARISON AND KEY POINTS**

**NSW road fatalities for November: 1998 - 2008**



**NSW road fatalities: monthly comparison**



**This month's key points**

There were 32 fatalities recorded on NSW roads in November 2008, which is 5 (11%) less than the number of fatalities for October 2007. There were 363 persons killed on NSW roads during the first eleven months of 2008, 35 (9%) fewer fatalities than the corresponding period in 2007. Fatalities in "30 and above" age groups (down from 10 to 4) contributed most to the decrease in fatalities for October 2008. Male fatalities decreased by 3 for the month (down from 29 to 26).

## SECTION 2: MONTHLY STATISTICS

### 2.1 FATALITIES

	Nov 2008	Nov 2007	Differ- ence	Year to Date 2008	Year to Date 2007	Differ- ence
<b>Road User Class</b>						
Driver	12	19	-7	199	193	6
Passenger	5	6	-1	58	70	-12
Pedestrian	7	3	4	46	65	-19
Motorcyclist <sup>1</sup>	6	9	-3	52	58	-6
Pedal cyclist <sup>1</sup>	1	0	1	7	12	-5
Other	1	0	1	1	0	1
<b>Total</b>	<b>32</b>	<b>37</b>	<b>-5</b>	<b>363</b>	<b>398</b>	<b>-35</b>
<b>Age (years)</b>						
0-4	2	1	1	4	7	-3
5-16	3	0	3	13	16	-3
17-20	1	7	-6	38	50	-12
21-25	5	4	1	40	35	5
26-29	1	2	-1	16	27	-11
30-39	4	10	-6	48	62	-14
40-49	5	2	3	55	59	-4
50-59	5	4	1	51	47	4
60-69	2	2	0	36	27	9
70+	4	5	-1	61	68	-7
Unknown	0	0	0	1	0	1
<b>Total</b>	<b>32</b>	<b>37</b>	<b>-5</b>	<b>363</b>	<b>398</b>	<b>-35</b>
<b>Sex</b>						
Male	26	29	-3	280	280	0
Female	6	8	-2	82	118	-36
<b>Total<sup>2</sup></b>	<b>32</b>	<b>37</b>	<b>-5</b>	<b>362</b>	<b>398</b>	<b>-36</b>
<b>RTA Region</b>						
Sydney	5	10	-5	105	105	0
Northern	5	5	0	59	67	-8
Hunter	10	9	1	65	77	-12
Southern	5	6	-1	62	57	5
South West	2	6	-4	35	53	-18
Western	5	1	4	37	39	-2
<b>Total</b>	<b>32</b>	<b>37</b>	<b>-5</b>	<b>363</b>	<b>398</b>	<b>-35</b>
<b>Road Classification</b>						
Freeway/motorway	0	2	-2	6	14	-8
State highway	10	10	0	108	114	-6
Other classified road <sup>3</sup>	10	13	-3	112	119	-7
Unclassified road	12	12	0	137	151	-14
<b>Total</b>	<b>32</b>	<b>37</b>	<b>-5</b>	<b>363</b>	<b>398</b>	<b>-35</b>

<sup>1</sup> Includes passengers

<sup>2</sup> Includes unknown sex

<sup>3</sup> Includes Main Road, Secondary Road and Tourist Road

## 2.2 FATAL CRASHES

	Nov 2008	Nov 2007	Differ- ence	Year to Date 2008	Year to Date 2007	Differ- ence
<b>Urbanisation</b>						
Sydney Metropolitan Area	4	10	-6	91	94	-3
Newcastle Metropolitan Area	1	1	0	17	17	0
Wollongong Metropolitan Area	1	1	0	19	17	2
Country urban (speed limit =<80km/h)	18	9	9	94	107	-13
Country non-urban (speed limit >80km/h)	6	13	-7	120	138	-18
Country unknown (speed limit unknown)	1	0	1	2	0	2
<b>Total</b>	<b>31</b>	<b>34</b>	<b>-3</b>	<b>343</b>	<b>373</b>	<b>-30</b>
<b>Location Type</b>						
Intersection	7	6	1	76	82	-6
Non-Intersection	24	28	-4	267	291	-24
<b>Total</b>	<b>31</b>	<b>34</b>	<b>-3</b>	<b>343</b>	<b>373</b>	<b>-30</b>
<b>Route</b>						
Princes Highway	0	2	-2	11	14	-3
Hume Highway	1	2	-1	17	15	2
Great Western Highway	2	0	2	7	4	3
New England Highway	0	0	0	9	7	2
Pacific Highway	5	3	2	28	32	-4
Newell Highway	0	0	0	7	7	0
All other routes	23	27	-4	264	294	-30
<b>Total</b>	<b>31</b>	<b>34</b>	<b>-3</b>	<b>343</b>	<b>373</b>	<b>-30</b>
<b>Road Classification</b>						
Freeway/motorway	0	2	-2	6	14	-8
State highway	10	9	1	99	104	-5
Other classified road <sup>1</sup>	10	11	-1	106	113	-7
Unclassified road	11	12	-1	132	142	-10
<b>Total</b>	<b>31</b>	<b>34</b>	<b>-3</b>	<b>343</b>	<b>373</b>	<b>-30</b>
<b>RTA Region</b>						
Sydney	5	10	-5	102	104	-2
Northern	5	4	1	56	59	-3
Hunter	10	8	2	61	70	-9
Southern	4	6	-2	57	56	1
South West	2	5	-3	34	48	-14
Western	5	1	4	33	36	-3
<b>Total</b>	<b>31</b>	<b>34</b>	<b>-3</b>	<b>343</b>	<b>373</b>	<b>-30</b>
<b>Type of Crash</b>						
Car crash	20	22	-2	241	258	-17
Light truck crash	2	8	-6	57	70	-13
Heavy truck crash	6	8	-2	59	67	-8
Heavy rigid truck crash	2	2	0	16	24	-8
Articulated truck crash	4	7	-3	43	46	-3
Bus crash	0	1	-1	4	10	-6
Motorcycle crash	5	9	-4	51	59	-8
<b>All fatal crashes <sup>2</sup></b>	<b>31</b>	<b>34</b>	<b>-3</b>	<b>343</b>	<b>373</b>	<b>-30</b>

<sup>1</sup> Includes Main Road, Secondary Road and Tourist Road

<sup>2</sup> The type of crash categories are not mutually exclusive and must not be added together.

## 2.3 COMPARISON WITH OTHER STATES

Please note that data included in this section represent statistics for the previous month<sup>1</sup>

### 2.3.1 Fatalities

	Oct 2008	Oct 2007	Differ- ence	Year to date 2008	Year to date 2007	Differ- ence
<b>State/Territory</b>						
New South Wales	44	33	11	331	361	-30
Victoria	26	37	-11	258	266	-8
Queensland	27	23	4	276	307	-31
South Australia	6	11	-5	80	97	-17
Western Australia	19	16	3	166	189	-23
Tasmania	2	1	1	32	39	-7
Northern Territory	9	7	2	65	43	22
Australian Capital Territory	0	1	-1	13	12	1
<b>Total</b>	<b>133</b>	<b>129</b>	<b>4</b>	<b>1,221</b>	<b>1,314</b>	<b>-93</b>

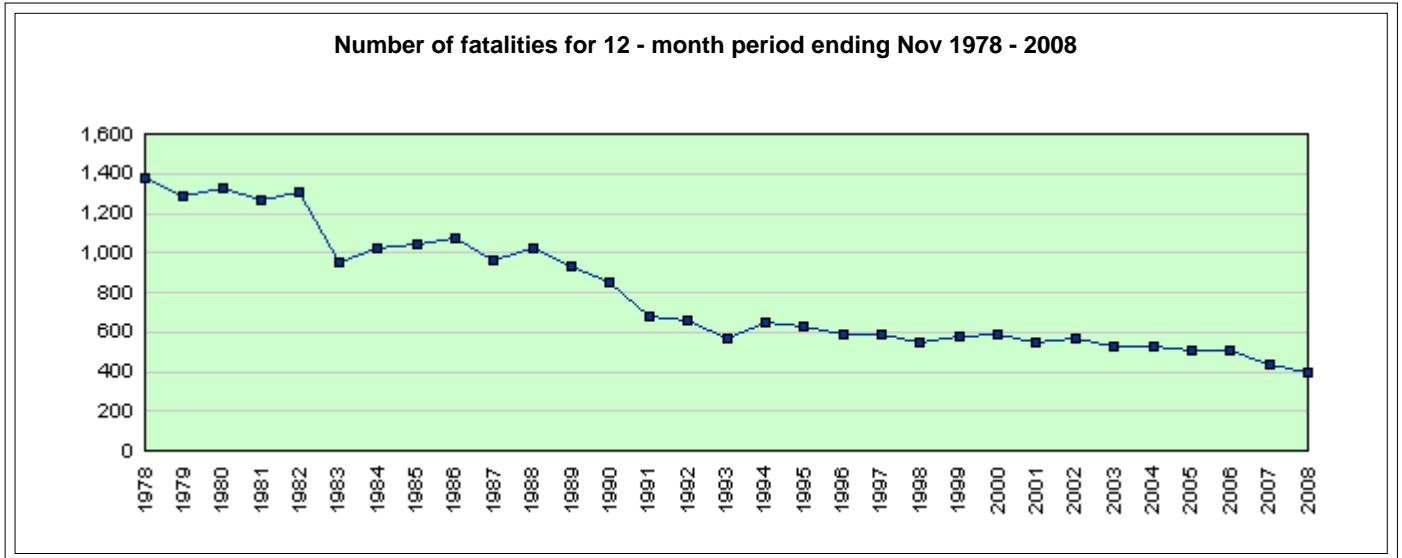
### 2.3.2 Fatal Crashes

	Oct 2008	Oct 2007	Differ- ence	Year to date 2008	Year to date 2007	Differ - ence
<b>State/Territory</b>						
New South Wales	40	32	8	312	339	-27
Victoria	25	30	-5	236	233	3
Queensland	24	22	2	244	287	-43
South Australia	5	9	-4	69	85	-16
Western Australia	18	15	3	149	173	-24
Tasmania	2	1	1	31	33	-2
Northern Territory	6	7	-1	58	39	19
Australian Capital Territory	0	1	-1	13	12	1
<b>Total</b>	<b>120</b>	<b>117</b>	<b>3</b>	<b>1,112</b>	<b>1,201</b>	<b>-89</b>

<sup>1</sup> Source: Australian Transport Safety Bureau

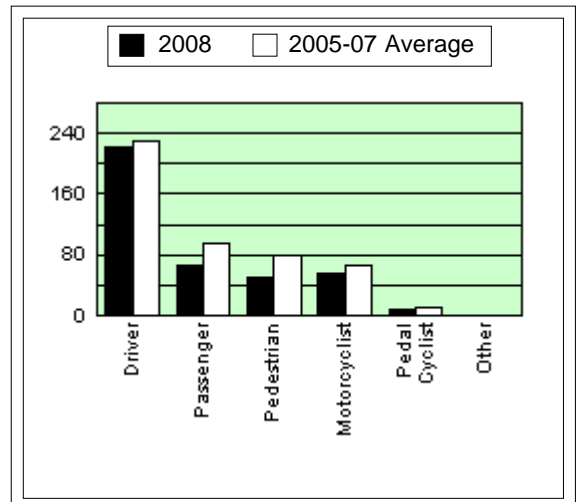
## SECTION 3: TRENDS

### 3.1 FATALITIES - OVERALL TREND



#### 3.1.1 Number of fatalities for 12 months ending November 2008, road user class

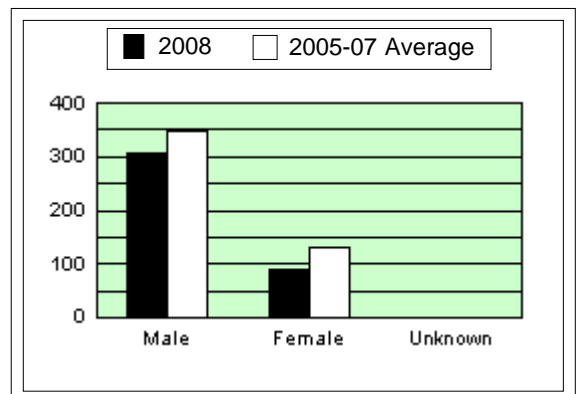
Road User Class <sup>1</sup>	2008	2005-07 Average	% Change
Driver	221	230.3	-4.1%
Passenger	65	94.0	-30.9%
Pedestrian	49	79.7	-38.5%
Motorcyclist	55	65.7	-16.2%
Pedal Cyclist	9	11.0	-18.2%
Other	1	0.0	N/A
<b>Total</b>	<b>400</b>	<b>480.7</b>	<b>-16.8%</b>



<sup>1</sup> The categories motorcyclist and pedal cyclist include passengers.

#### 3.1.2 Number of fatalities for 12 months ending November 2008, sex of fatality

Sex of fatality	2008	2005-07 Average	% Change
Male	308	348.7	-11.7%
Female	91	132.0	-31.1%
<b>Total<sup>2</sup></b>	<b>399</b>	<b>480.7</b>	<b>-17.0%</b>

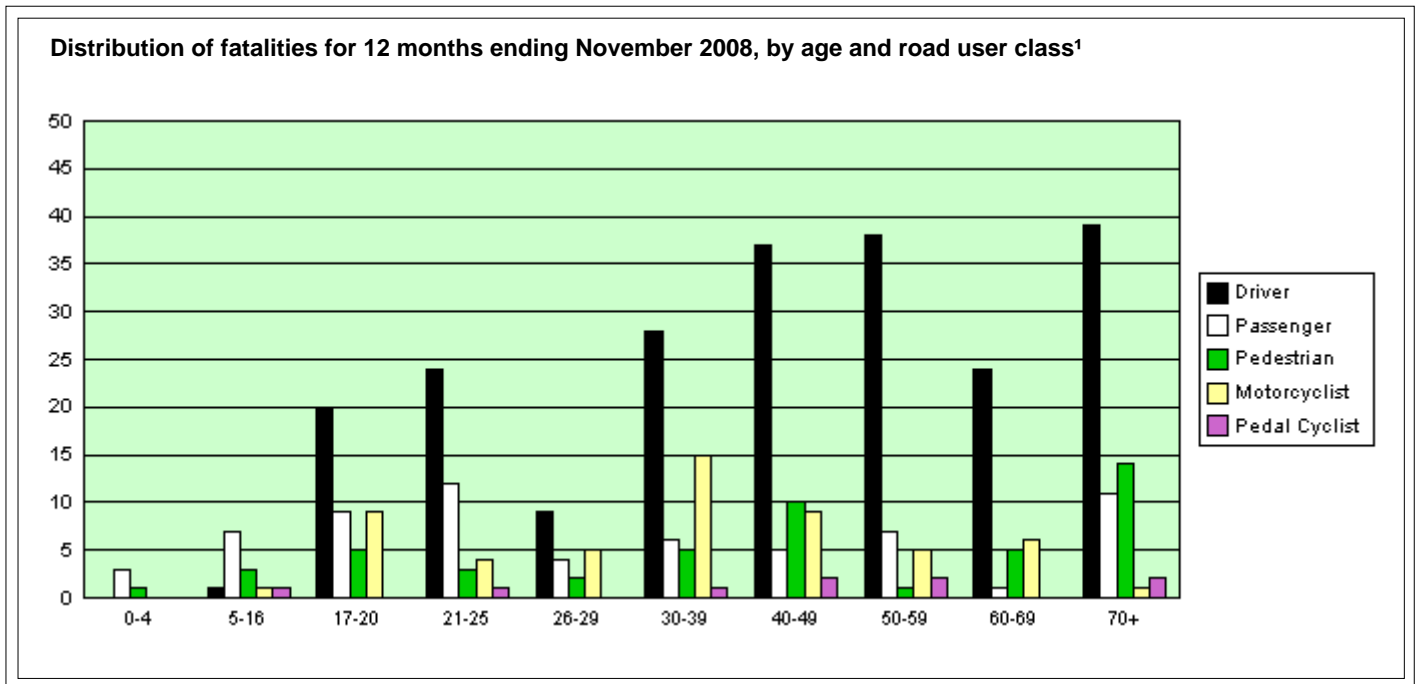
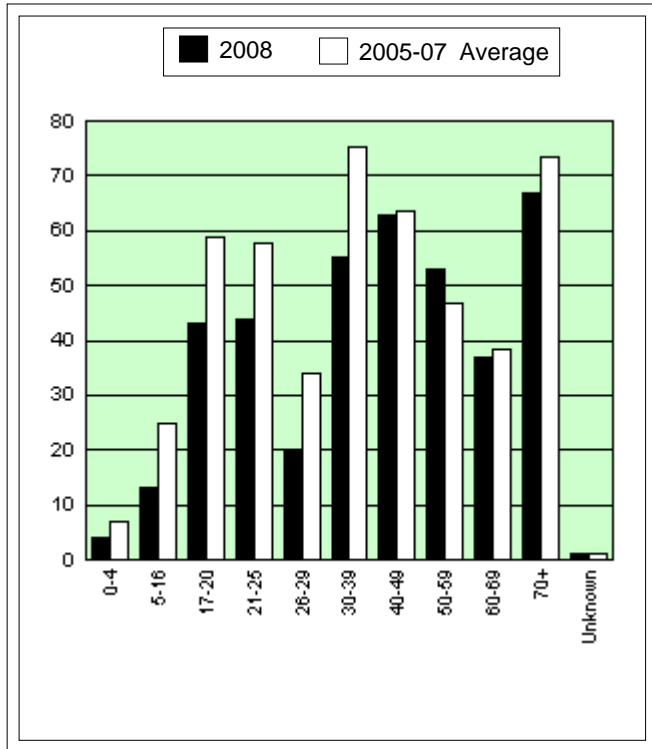


<sup>1</sup> The categories motorcyclist and pedal cyclist include passengers.

<sup>2</sup> Includes unknown sex

### 3.1.3 Number of fatalities for 12 months ending November 2008, age of fatality

Age	2008	2005-07 Average	% Change
0-4	4	7.0	-42.9%
5-16	13	25.0	-48.0%
17-20	43	58.7	-26.7%
21-25	44	57.7	-23.7%
26-29	20	34.0	-41.2%
30-39	55	75.3	-27.0%
40-49	63	63.7	-1.0%
50-59	53	46.7	13.6%
60-69	37	38.3	-3.5%
70+	67	73.3	-8.6%
Unknown	1	1.0	0.0%
<b>Total</b>	<b>400</b>	<b>480.7</b>	<b>-16.8%</b>

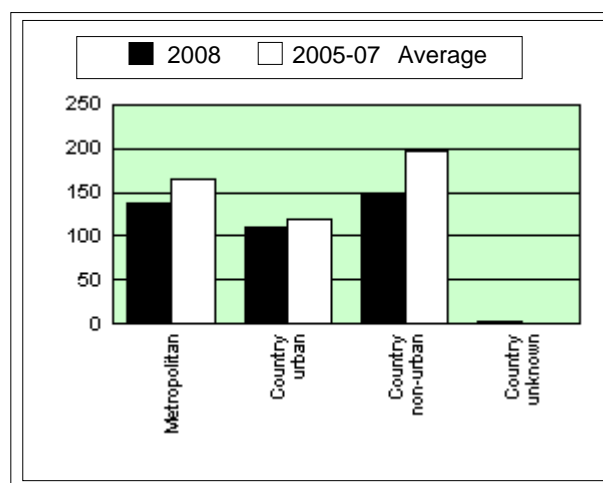


<sup>1</sup> The categories motorcyclist and pedal cyclist include passengers.



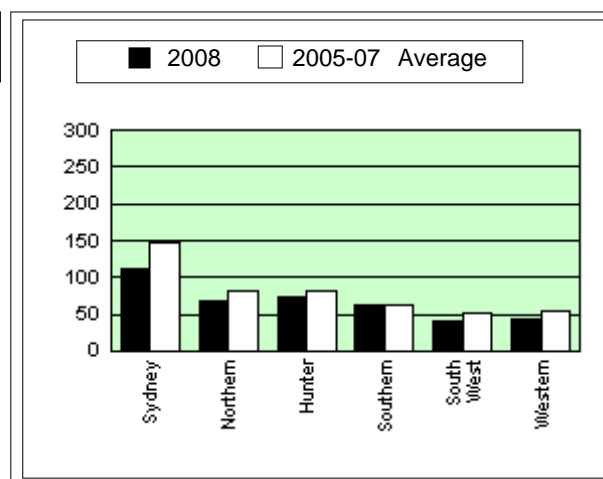
### 3.1.4 Number of fatalities for 12 months ending November 2008, urbanisation

Urbanisation	2008	2005-07 Average	% Change
Metropolitan	137	165.0	-17.0%
Country urban	111	118.7	-6.5%
Country non-urban	150	197.0	-23.9%
Country unknown	2	0.0	N/A
<b>Total</b>	<b>400</b>	<b>480.7</b>	<b>-16.8%</b>



### 3.1.5 Number of fatalities for 12 months ending November 2008, RTA Region

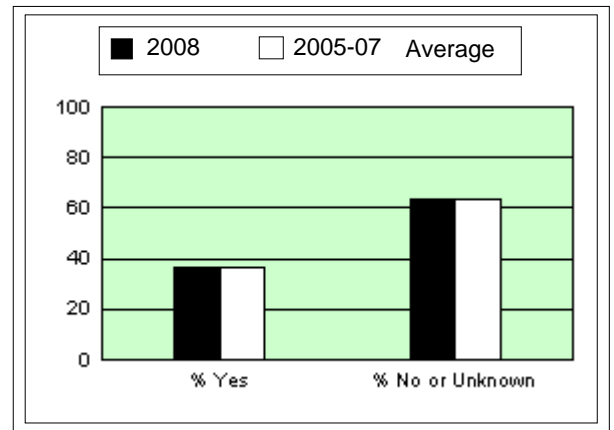
RTA Region	2008	2005-07 Average	% Change
Sydney	112	148.0	-24.3%
Northern	67	81.0	-17.3%
Hunter	73	82.7	-11.7%
Southern	64	63.7	0.5%
South West	40	50.7	-21.1%
Western	44	54.7	-19.5%
<b>Total</b>	<b>400</b>	<b>480.7</b>	<b>-16.8%</b>



### 3.2 FACTORS INVOLVED IN FATAL CRASHES

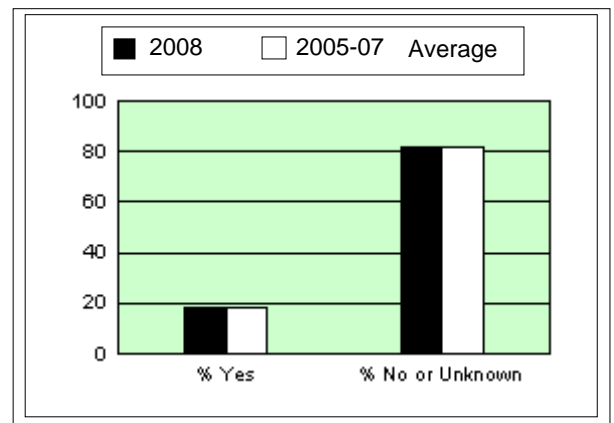
#### 3.2.1 Number of fatal crashes for 12 months ending November 2008, speeding involvement

Excessive Speed ?	2008	2005-07 Average	% Change
Yes	138	161.0	-14.3%
% Yes	36.8%	36.6%	
No or Unknown	237	278.7	-15.0%
% No or Unknown	63.2%	63.4%	
<b>Total</b>	<b>375</b>	<b>439.7</b>	<b>-14.7%</b>



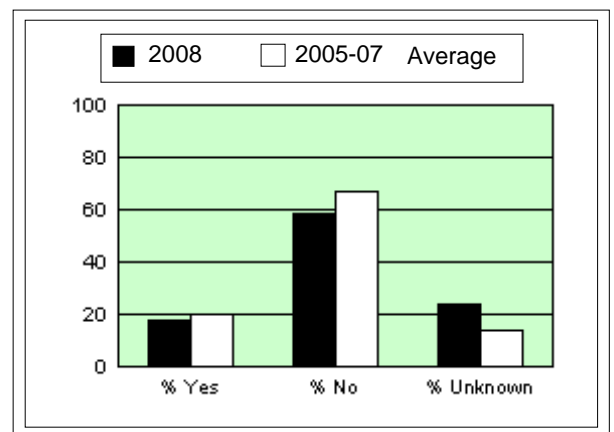
#### 3.2.2 Number of fatal crashes for 12 months ending November 2008, fatigue involvement

Fatigue ?	2008	2005-07 Average	% Change
Yes	69	78.7	-12.3%
% Yes	18.4%	17.9%	
No or Unknown	306	361.0	-15.2%
% No or Unknown	81.6%	82.1%	
<b>Total</b>	<b>375</b>	<b>439.7</b>	<b>-14.7%</b>



#### 3.2.3 Number of fatal crashes for 12 months ending September 2008, alcohol involvement

Alcohol ? <sup>1</sup>	2008	2005-07 Average	% Change
Yes	65	87.7	-25.9%
% Yes	17.6%	19.7%	
No	217	297.3	-27.0%
% No	58.6%	66.7%	
Unknown	88	60.7	45.1%
% Unknown	23.8%	13.6%	
<b>Total</b>	<b>370</b>	<b>445.7</b>	<b>-17.0%</b>

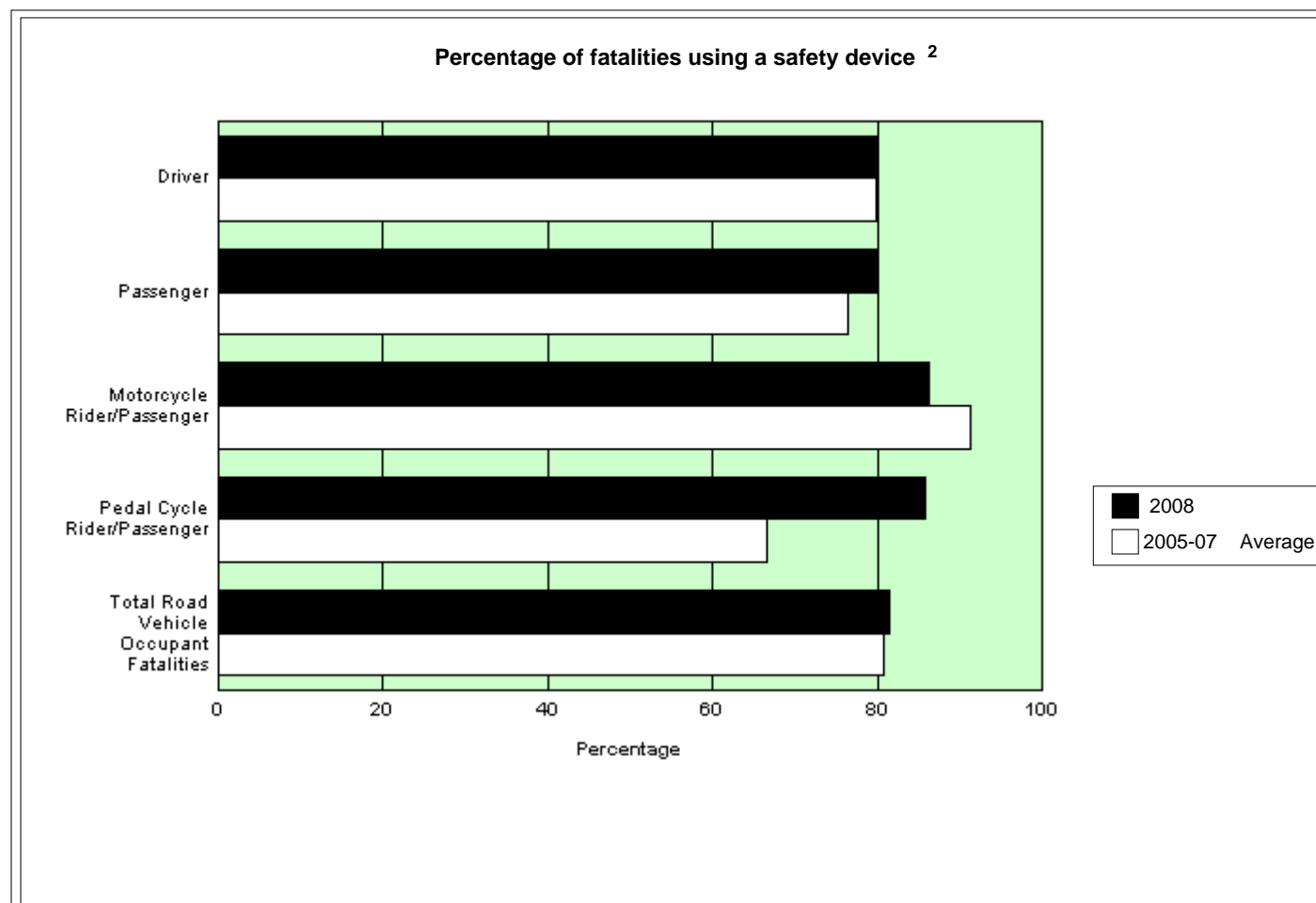


<sup>1</sup> Data for blood alcohol concentration are only available up to September 2008 inclusive.

### 3.3 SAFETY DEVICE USAGE OF FATALITIES

#### 3.3.1 Number of road vehicle fatalities for 12 months ending November 2008, safety device usage, road user class

Safety Device?	Driver		Passenger		Motorcycle Rider/Passenger		Pedal Cycle Rider/Passenger		Total Road Vehicle Occupant Fatalities <sup>1</sup>	
	2008	2005-07 Average	2008	2005-07 Average	2008	2005-07 Average	2008	2005-07 Average	2008	2005-07 Average
	Worn	145	162.3	44	64.0	44	59.7	6	6.7	240
Not Worn	36	41.0	11	19.7	7	5.7	1	3.3	55	69.7
Unknown	40	27.0	10	10.3	4	0.3	2	1.0	56	38.7
<b>Total</b>	<b>221</b>	<b>230.3</b>	<b>65</b>	<b>94.0</b>	<b>55</b>	<b>65.7</b>	<b>9</b>	<b>11.0</b>	<b>351</b>	<b>401.0</b>



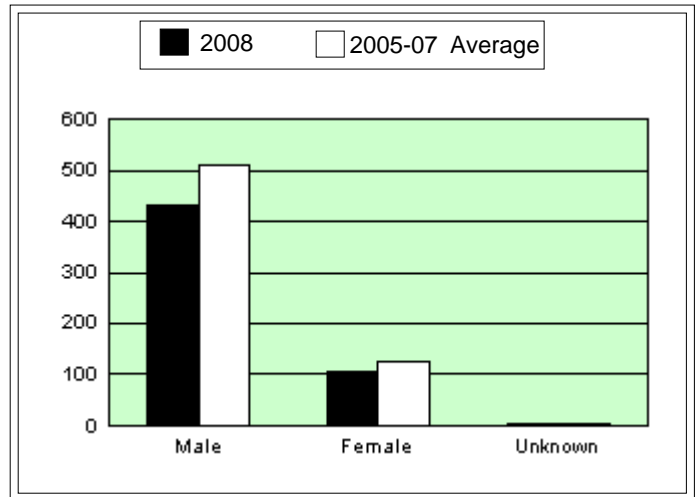
<sup>1</sup> Includes fatalities of other or unknown road user class.

<sup>2</sup> Excludes cases of unknown safety device usage

### 3.4 MOTOR VEHICLE CONTROLLERS INVOLVED IN FATAL CRASHES

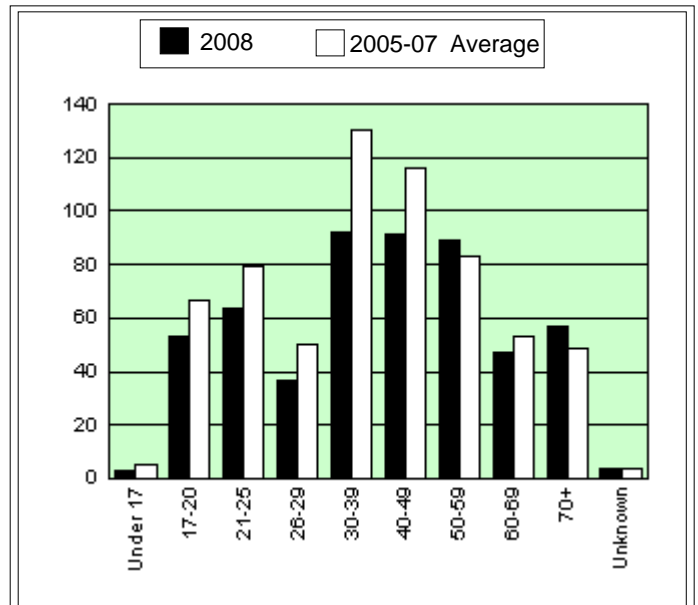
#### 3.4.1 Number of motor vehicle controllers involved in fatal crashes for 12 months ending November 2008, sex of controller

Sex	2008	2005-07 Average	% Change
Male	430	508.7	-15.5%
Female	104	125.3	-17.0%
Unknown	3	2.3	28.6%
<b>Total</b>	<b>537</b>	<b>636.3</b>	<b>-15.6%</b>



#### 3.4.2 Number of motor vehicle controllers involved in fatal crashes for 12 months ending November 2008, age of controller

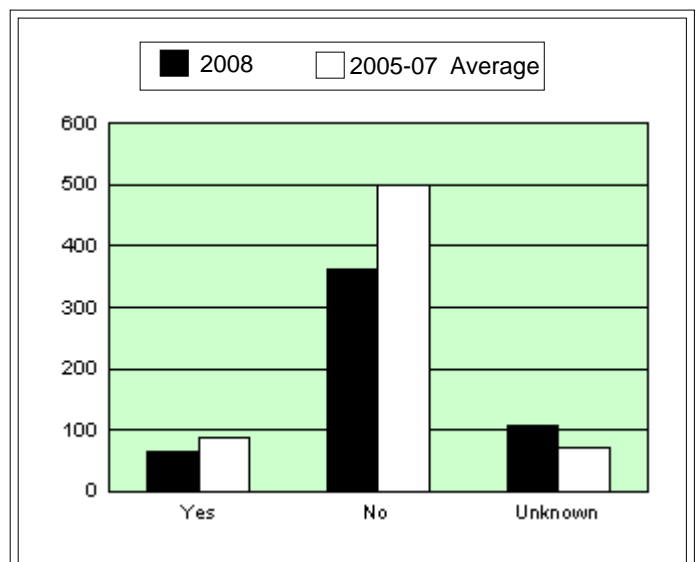
Age	2008	2005-07 Average	% Change
Under 17	3	5.0	-40.0%
17-20	53	66.7	-20.5%
21-25	64	79.3	-19.3%
26-29	37	50.0	-26.0%
30-39	92	130.0	-29.2%
40-49	91	116.3	-21.8%
50-59	89	83.3	6.8%
60-69	47	53.0	-11.3%
70+	57	49.0	16.3%
Unknown	4	3.7	9.1%
<b>Total</b>	<b>537</b>	<b>636.3</b>	<b>-15.6%</b>



#### 3.4.3 Number of motor vehicle controllers involved in fatal crashes for 12 months ending September 2008, alcohol involvement

Alcohol Involvement <sup>1</sup>	2008	2005-07 Average	% Change
Yes	65	87.7	-25.9%
No	362	498.3	-27.4%
Unknown	108	71.3	51.4%
<b>Total</b>	<b>535</b>	<b>657.3</b>	<b>-18.6%</b>

<sup>1</sup> Data for blood alcohol concentration are only available up to September 2008 inclusive.



### 3.5 CASUALTIES - OVERALL TREND

Casualty figures presented in this section are based on preliminary data supplied by the NSW Police from the Computerised Operational Policing System (COPS) database.

RTA Region figures are estimates based on combinations of NSW Police Local Area Commands. These combinations do not correspond exactly to RTA Region boundaries.

#### 3.5.1 Twelve months comparison

RTA Region	12 Months ending Oct, 2008	12 Months ending Oct, 2007	% Change
Sydney	13,932	15,220	-8.5%
Northern	2,401	2,497	-3.8%
Hunter	3,523	3,752	-6.1%
Southern	2,567	2,485	3.3%
South West	1,028	1,037	-0.9%
Western	1,308	1,385	-5.6%
<b>Total</b>	<b>24,759</b>	<b>26,376</b>	<b>-6.1%</b>

#### 3.5.2 Year-to-date comparison

RTA Region	Jan to Oct, 2008	Jan to Oct, 2007	% Change
Sydney	11,512	12,684	-9.2%
Northern	1,970	2,112	-6.7%
Hunter	2,876	3,144	-8.5%
Southern	2,101	2,041	2.9%
South West	842	840	0.2%
Western	1,067	1,154	-7.5%
<b>Total</b>	<b>20,368</b>	<b>21,975</b>	<b>-7.3%</b>