

**TABLE GAMES AND SLOT MACHINES IN OPERATION
AS OF DECEMBER 31, 1981 AND 1980**

	Resorts		Caesars		Bally's Park		The Sands		Harrah's		Golden		Playboy-		Claridge ⁴		Tropicana ⁴		Total Industry		
	International		Boardwalk		Place				Marina		Nugget		Elsinore ⁴								
	1981	1980	1981	1980	1981	1980	1981	1980	1981	1980	1981	1980	1981	1980	1981	1980	1981	1980	1981	1980	
Table Games:																					
Blackjack	84	84	65	73	88	104	48	49	80	81	62	70	81	-	48	-	76	-	632	461	
Craps	20	20	22	18	22	16	14	10	18	12	14	10	18	-	13	-	18	-	159	86	
Roulette	10	14	12	12	12	10	8	7	12	12	12	10	16	-	8	-	16	-	106	65	
Big Six	6	2	4	4	4	4	2	4	4	4	4	4	3	-	2	-	4	-	33	22	
Baccarat	3	3	3	3	3	3	2	2	2	2	2	2	3	-	2	-	2	-	22	15	
Total Table Games	<u>123</u>	<u>123</u>	<u>106</u>	<u>110</u>	<u>129</u>	<u>137</u>	<u>74</u>	<u>72</u>	<u>116</u>	<u>111</u>	<u>94</u>	<u>96</u>	<u>121</u>	<u>-</u>	<u>73</u>	<u>-</u>	<u>116</u>	<u>-</u>	<u>952</u>	<u>649</u>	
Slot Machines:																					
\$0.25 Slots	1,160	1,019	758	833	1,136	1,063	623	439	643	416	828	784	840	-	589	-	903	-	7,480	4,554	
\$0.50 Slots	77	0	86	109	115	215	26	183	126	126	100	161	40	-	76	-	180	-	826	794	
\$1.00 Slots	316	486	182	198	143	261	44	229	208	207	177	158	109	-	76	-	120	-	1,375	1,539	
Video Blackjack ¹	32	0	62	0	19	0	20	0	20	6	10	0	44	-	10	-	75	-	292	0	
Video Poker ¹	32	0	38	0	10	0	20	0	0	0	10	0	35	-	10	-	25	-	180	0	
Progressive Slots ²	39	0	70	0	54	25	61	0	25	15	19	19	67	-	24	-	16	-	375	59	
Other Slots ³	93	95	162	75	123	111	86	46	108	140	62	62	68	-	65	-	70	-	837	529	
Total Slots	<u>1,749</u>	<u>1,600</u>	<u>1,358</u>	<u>1,215</u>	<u>1,600</u>	<u>1,675</u>	<u>880</u>	<u>895</u>	<u>1,130</u>	<u>910</u>	<u>1,206</u>	<u>1,184</u>	<u>1,203</u>	<u>-</u>	<u>850</u>	<u>-</u>	<u>1,389</u>	<u>-</u>	<u>11,365</u>	<u>7,481</u>	
Casino Square Footage	<u>60,000</u>	<u>60,000</u>	<u>48,045</u>	<u>48,045</u>	<u>60,000</u>	<u>60,000</u>	<u>32,236</u>	<u>32,200</u>	<u>44,090</u>	<u>40,403</u>	<u>40,662</u>	<u>40,662</u>	<u>51,823</u>	<u>-</u>	<u>28,982</u>	<u>-</u>	<u>46,305</u>	<u>-</u>	<u>412,143</u>	<u>281,310</u>	

¹Includes \$0.25 and \$1.00 slot machines.

²Includes \$0.25, \$0.50 and \$1.00 slot machines.

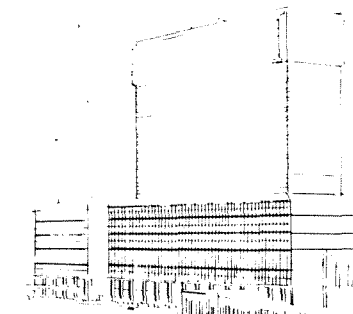
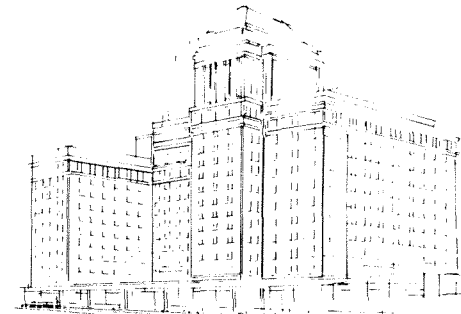
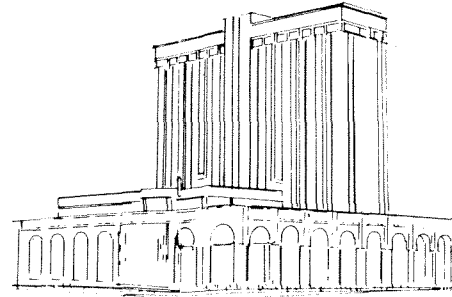
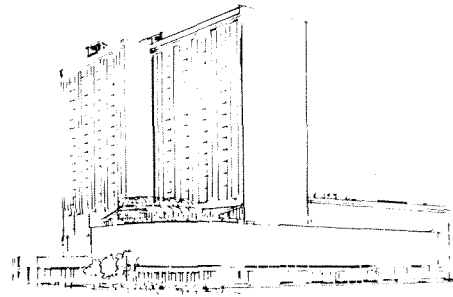
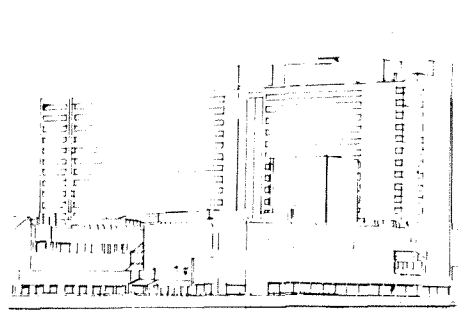
³Includes \$0.10 and \$0.50 slot machines.

⁴Not in operation during 1980.

**THE NEW JERSEY CASINO INDUSTRY
TABLE GAMES AND SLOT MACHINES IN OPERATION
AS OF DECEMBER 31, 1982 AND 1981**

	<u>Resorts</u>		<u>Caesars</u>		<u>Bally</u>		<u>Sands</u>		<u>Harrah's</u>		<u>Golden Nugget</u>		<u>Playboy</u>		<u>Claridge</u>		<u>Tropicana</u>		<u>Total Industry</u>		
	<u>1982</u>	<u>1981</u>	<u>1982</u>	<u>1981</u>	<u>1982</u>	<u>1981</u>	<u>1982</u>	<u>1981</u>	<u>1982</u>	<u>1981</u>	<u>1982</u>	<u>1981</u>	<u>1982</u>	<u>1981</u>	<u>1982</u>	<u>1981</u>	<u>1982</u>	<u>1981</u>	<u>1982</u>	<u>1981</u>	
Table Games:																					
Blackjack	84	84	63	65	90	88	59	48	68	80	61	62	76	81	44	48	76	76	621	632	
Craps	20	20	26	22	22	22	16	14	18	18	18	14	14	18	12	13	18	18	164	159	
Roulette	11	10	12	12	12	12	10	8	12	12	10	12	12	16	8	8	15	16	102	106	
Big Six	6	6	2	4	4	4	2	2	3	4	4	4	3	3	2	2	4	4	30	33	
Baccarat	3	3	4	3	3	3	2	2	2	2	2	2	3	3	2	2	3	2	24	22	
Total Table Games	<u>124</u>	<u>123</u>	<u>107</u>	<u>106</u>	<u>131</u>	<u>129</u>	<u>89</u>	<u>74</u>	<u>103</u>	<u>116</u>	<u>95</u>	<u>94</u>	<u>108</u>	<u>121</u>	<u>68</u>	<u>73</u>	<u>116</u>	<u>116</u>	<u>941</u>	<u>952</u>	
Slot Machines:																					
\$.05 slot machines	135	93	70	100	136	123	64	68	66	59	63	62	74	68	81	65	76	70	765	708	
\$.25 slot machines	1,071	1,160	919	758	1,133	1,136	622	622	724	643	810	828	1,070	840	623	589	1,097	903	8,069	7,480	
\$1.00 slot machines	309	316	105	182	130	143	56	4	228	208	135	177	62	109	63	76	105	120	1,193	1,375	
Other slot machines*	234	180	270	318	208	198	308	141	287	220	188	139	228	186	87	120	224	296	2,034	1,802	
Total Slot Machines	<u>1,749</u>	<u>1,749</u>	<u>1,364</u>	<u>1,358</u>	<u>1,607</u>	<u>1,600</u>	<u>1,050</u>	<u>881</u>	<u>1,305</u>	<u>1,130</u>	<u>1,196</u>	<u>1,206</u>	<u>1,434</u>	<u>1,203</u>	<u>854</u>	<u>850</u>	<u>1,502</u>	<u>1,389</u>	<u>12,061</u>	<u>11,365</u>	
Casino Square Footage	<u>60,000</u>	<u>60,000</u>	<u>49,061</u>	<u>48,045</u>	<u>60,000</u>	<u>60,000</u>	<u>38,336</u>	<u>32,288</u>	<u>44,698</u>	<u>44,090</u>	<u>40,662</u>	<u>40,662</u>	<u>52,313</u>	<u>51,823</u>	<u>29,950</u>	<u>28,982</u>	<u>50,795</u>	<u>46,305</u>	<u>425,815</u>	<u>412,143</u>	

*Includes \$.10 and \$.50 slot machines and all denominations of progressive, video poker, video blackjack, video dice and big bertha slot machines. (Video dice and big bertha slot machines were introduced during 1982.)



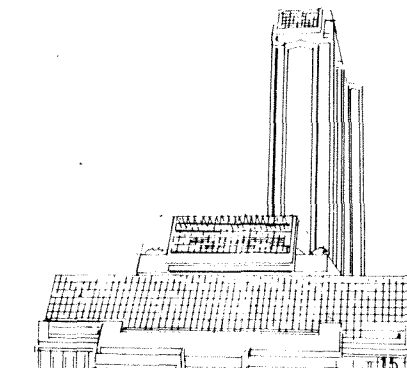
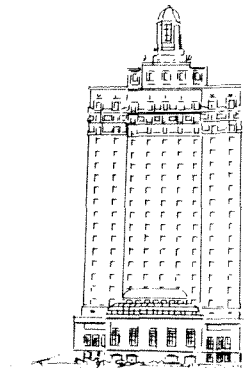
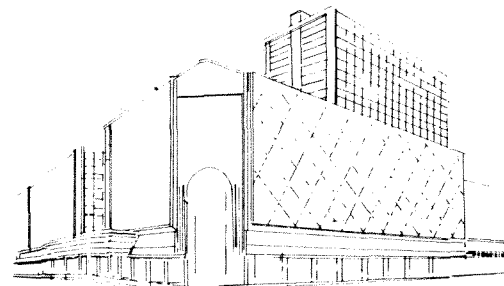
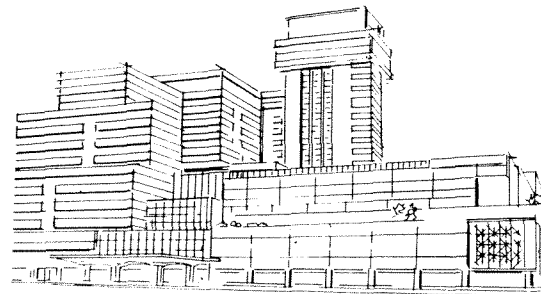
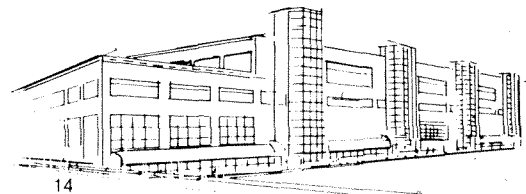
**THE NEW JERSEY
CASINO INDUSTRY
FACILITY STATISTICS
AT DECEMBER 31,
1984 and 1983**

	Atlantis		Bally		Caesars		Claridge		Golden Nugget		Harrah's		Resorts		Sands		Tropicana		Trump	Industry Totals		
	1984	1983	1984	1983	1984	1983	1984	1983	1984	1983	1984	1983	1984	1983	1984	1983	1984	1983	1984	1983	1984	1983
Table Games:																						
Blackjack	61	60	76	76	72	54	40	40	57	57	60	60	81	84	57	43	76	76	82	662	550	
Craps	16	16	22	22	24	24	12	12	20	20	22	22	22	20	21	16	26	24	22	207	176	
Roulette	11	11	12	12	10	7	8	8	10	10	12	12	11	11	12	10	11	11	12	109	92	
Big Six	2	2	4	4	4	3	2	2	4	4	3	3	4	6	2	2	3	3	6	34	29	
Baccarat	3	3	3	3	4	4	2	2	2	2	2	2	3	3	2	2	3	3	3	27	24	
Total Table Games	93	92	117	117	114	92	64	64	93	93	99	99	121	124	94	73	119	117	125	1,039	871	
Slot Machines:																						
\$.05 slot machines	66	68	89	86	84	75	54	55	63	63	67	66	94	94	76	56	73	76	88	754	639	
\$.25 slot machines	851	890	1,071	1,101	797	886	574	641	732	727	641	690	988	1,067	943	647	935	946	917	8,449	7,595	
\$ 1.00 slot machines	155	95	199	162	211	180	146	94	179	179	228	228	235	307	160	68	175	167	215	1,903	1,480	
Other slot machines*	239	232	237	239	495	278	225	197	228	233	393	323	347	261	281	145	276	268	514	3,235	2,176	
Total Slot Machines	1,311	1,285	1,596	1,588	1,587	1,419	999	987	1,202	1,202	1,329	1,307	1,664	1,729	1,460	916	1,459	1,457	1,734	14,341	11,890	
Casino Square Footage	51,051	51,085	59,439	59,499	59,999	48,965	33,937	34,408	40,814	40,814	44,698	44,698	59,857	59,857	49,459	32,497	50,850	50,873	60,000	510,104	422,696	
Number of Hotel Rooms	500	506	507	512	645	507	501	504	522	522	502	502	689	701	500	504	516	521	612	5,494	4,779	
Convention Space Square Footage	26,693	21,767	41,365	37,440	25,946	24,755	25,075	27,138	24,454	25,024	23,404	23,473	49,445	49,076	27,184	32,053	28,762	31,556	30,459	302,467	272,905	
Number of Parking Spaces	1,616	1,594	816	816	1,000	1,000	614	504	1,672	1,527	2,699	2,753	3,238	3,238	765	765	2,506	2,174	1,051	15,977	14,371	
Number of Theatre Seats	850	800	310	310	492	492	558	558	540	540	849	849	1,600	1,650	850	850	1,060	970	718	7,827	7,019	
Number of Restaurants	7	7	9	8	8	9	6	7	6	8	6	8	9	12	10	4	9	10	7	77	73	
Fixed Asset Investment ^b (Millions)	\$173.1	\$163.9	\$380.9	\$336.3	\$254.2	\$172.3	\$8.3 ^c	\$7.2 ^c	\$173.3	\$234.0	\$184.1	\$164.9	\$165.7	\$158.8	\$135.2	\$103.7	\$98.0	\$300.3	\$192.1	\$1,764.9	\$1,641.4	
Number of Employees	3,390	3,473	3,623	3,751	3,661	3,400	2,658	2,253	3,446	3,209	3,514	3,789	4,008	4,065	3,831	2,707	3,689	3,550	4,148	35,968	30,197	

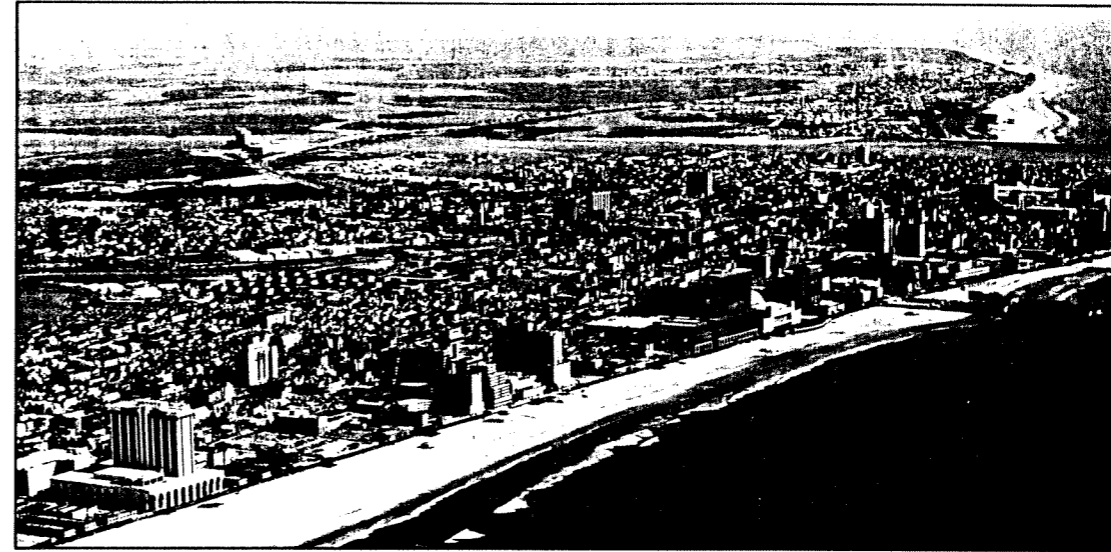
*Includes all other slot machines.

^bRepresents property, plant, and equipment before accumulated depreciation as reported by each casino licensee.

^cFixed asset investment for Claridge at December 31, 1983 and 1984, only includes gaming equipment because Claridge at Park Place, Incorporated leases its property, plant, and equipment as a result of a sale and refinancing agreement.



The New Jersey
Casino Industry
Facility Statistics
at December 31, 1985
and 1984



	Atlantis		Bally		Caesars		Castle	Claridge		Golden Nugget		Harrah's		Resorts		Sands		Tropicana		Trump		Industry Totals	
	1985	1984	1985	1984	1985	1984	1985	1985	1984	1985	1984	1985	1984	1985	1984	1985	1984	1985	1984	1985	1984	1985	1984
Table Games:																							
Blackjack	61	61	76	76	72	72	74	48	40	57	57	60	60	81	81	62	57	76	76	84	82	751	662
Craps	16	16	22	22	24	24	24	12	12	20	20	22	22	22	22	18	21	26	26	24	22	230	207
Roulette	9	11	12	12	11	10	12	6	8	10	10	12	12	11	11	12	12	11	11	11	12	117	109
Big Six	3	2	4	4	4	4	4	2	2	4	4	3	3	4	4	2	2	3	3	4	6	37	34
Baccarat	3	3	3	3	3	4	3	2	2	2	2	3	2	3	3	2	2	3	3	3	3	30	27
Total Table Games	92	93	117	117	114	114	117	70	64	93	93	100	99	121	121	96	94	119	119	126	125	1,165	1,039
Slot Machines:																							
.05 slot machines	66	66	130	89	86	84	97	51	54	62	63	107	67	88	94	75	76	73	73	83	88	918	754
.25 slot machines	835	851	1,004	1,071	906	797	1,040	586	574	655	732	832	641	979	988	763	943	784	935	942	917	9,326	8,449
\$1 slot machines	110	155	200	199	162	211	228	144	146	179	179	271	228	224	235	147	160	231	175	184	215	2,080	1,903
Other slot machines*	309	239	262	237	444	495	319	203	225	304	228	372	393	369	347	465	281	364	276	448	514	3,859	3,235
Total Slot Machines	1,320	1,311	1,596	1,596	1,598	1,587	1,684	984	999	1,200	1,202	1,582	1,329	1,660	1,664	1,450	1,460	1,452	1,459	1,657	1,734	16,183	14,341
Casino Square Footage	50,516	51,051	59,439	59,439	59,296	59,999	60,000	33,752	33,937	40,814	40,814	43,251	44,698	59,857	59,857	49,688	49,370	50,850	50,850	60,000	60,000	567,463	510,015
Number of Hotel Rooms	500	500	510	512	641	645	605	504	504	519	522	750	506	686	686	500	500	515	516	612	612	6,342	5,503
Convention Space Square Footage	26,255	26,693	35,994	41,365	26,364	25,946	27,961	23,628	24,755	23,961	24,454	25,100	23,404	48,953	49,445	24,930	27,184	26,152	28,762	30,716	30,459	320,014	302,467
Number of Parking Spaces	1,736	1,616	982	816	1,310	1,000	2,866	636	614	1,613	1,672	2,599	2,699	2,340	3,238	765	765	2,506	2,506	1,051	1,051	18,404	15,977
Number of Theatre Seats	850	850	310	310	1,000	492	454	558	558	540	540	849	849	1,600	1,600	850	850	1,720	1,060	718	718	9,449	7,827
Number of Restaurants	5	7	10	9	11	10	7	8	8	10	9	10	8	12	12	9	6	9	10	7	8	98	87
Fixed Asset Investment ^b (Millions)	\$180.7	\$173.1	\$408.9	\$380.9	\$269.5	\$254.2	\$322.4	\$8.2 ^c	\$7.4 ^c	\$186.3	\$175.7	\$247.3	\$184.1	\$173.1	\$165.7	\$191.9	\$135.2	\$102.7 ^d	\$98.0 ^d	\$196.7	\$192.1	\$2,287.7	\$1,766.4
Number of Employees	2,862	3,344	3,861	3,691	3,629	3,590	3,801	2,195	2,187	2,861	3,089	3,827	3,514	3,912	4,254	2,762	2,503	3,495	3,409	3,799	4,100	37,004	33,681

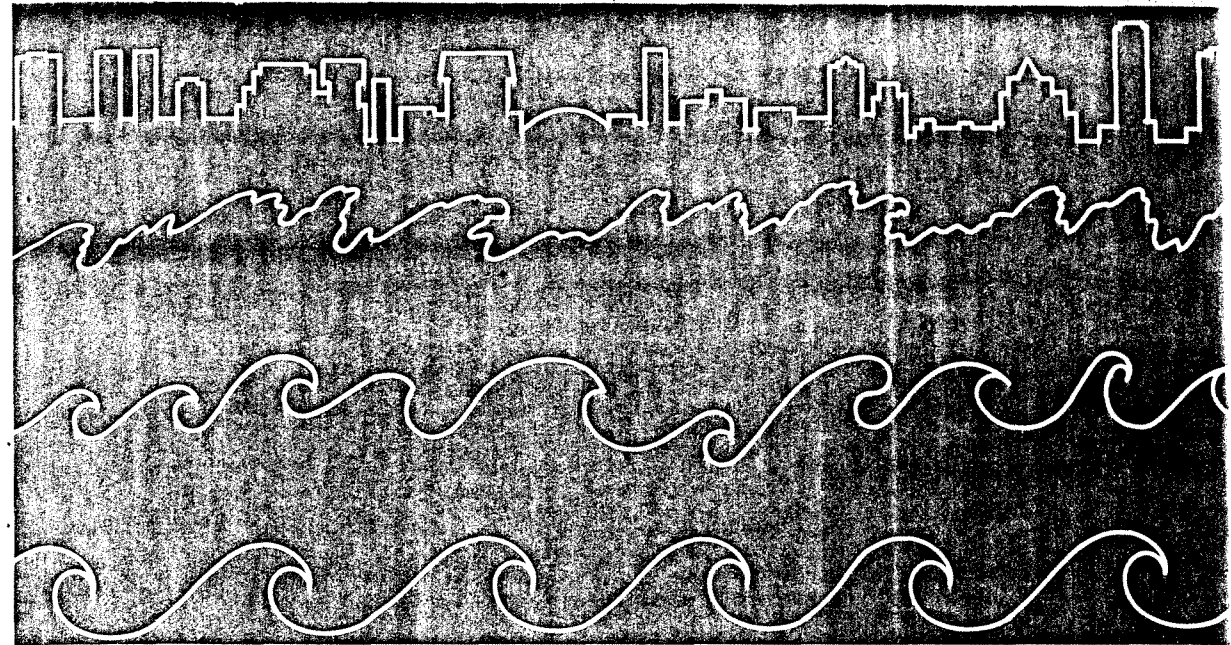
*Includes all other slot machines.

^bRepresents property and equipment before accumulated depreciation as reported by each casino licensee.

^cFixed asset investment for Claridge at December 31, 1984 and 1985, only includes gaming equipment because Claridge at Park Place, Incorporated leases its property and equipment as a result of a sale and refinancing agreement.

^dFixed asset investment for Tropicana at December 31, 1984 and 1985 does not include the building and certain non-gaming assets because Adamar of New Jersey, Inc. leases these assets as a result of a sale and leaseback transaction.

The New Jersey
Casino Industry
Facility Statistics
at December 31, 1986
and 1985



	Atlantis		Bally		Caesars		Castle		Claridge	
	1986	1985	1986	1985	1986	1985	1986	1985	1986	1985
Table Games:										
Blackjack	60	61	78	76	70	72	74	74	60	48
Craps	16	16	22	22	24	24	24	24	14	12
Roulette	9	9	12	12	11	11	12	12	8	6
Big Six	3	3	4	4	4	4	4	4	2	2
Baccarat	2	3	2	3	5	4	3	3	1	2
Total Table Games	90	92	118	117	114	114	117	117	85	70
Slot Machines:										
.05 slot machines	171	66	132	130	80	86	98	97	107	51
.25 slot machines	842	835	939	1,004	883	906	1,001	1,040	775	586
\$1 slot machines	92	110	180	200	162	162	228	228	154	144
Other slot machines*	290	309	345	262	475	444	357	319	238	203
Total Slot Machines	1,395	1,320	1,596	1,596	1,600	1,598	1,684	1,684	1,274	984
Casino Square Footage	50,544	50,709	59,439	59,439	59,296	59,296	60,000	60,000	42,817	33,752
Number of Hotel Rooms	500	500	510	510	641	641	607	605	501	504
Convention Space Square Footage	30,727	26,255	49,035	35,994	26,364	26,364	28,344	27,961	26,594	23,628
Number of Parking Spaces	1,462	1,736	930	982	1,344	1,310	2,866	2,866	1,323	636
Number of Theatre Seats	850	850	380	310	1,050	1,000	462	454	600	558
Number of Restaurants	5	5	10	10	12	11	12	7	8	8
Fixed Asset Investment* (Millions)	\$183.3	\$180.7	\$432.9	\$408.9	\$281.0	\$269.5	\$336.9	\$322.4	\$10.4	\$8.2 ^c
Number of Employees	2,595	2,862	3,480	3,455	3,672	3,601	3,932	3,801	2,375	2,195

	Golden Nugget		Harrah's		Resorts		Sands		Tropicana		Trump		Industry Totals	
	1986	1985	1986	1985	1986	1985	1986	1985	1986	1985	1986	1985	1986	1985
	57	57	80	60	81	81	62	62	78	76	84	84	784	751
	20	20	24	22	22	22	18	18	20	26	24	24	228	230
	10	10	12	12	11	11	12	12	11	11	12	11	120	117
	4	4	3	3	4	4	3	2	4	3	11	4	39	37
	2	2	2	3	3	3	3	2	2	3	2	3	27	30
	93	93	121	100	121	121	98	96	115	119	126	126	1,198	1,165
	62	62	128	107	84	88	78	75	65	73	83	83	1,088	918
	570	655	913	832	965	979	766	763	705	784	925	942	9,284	9,326
	207	179	268	271	210	224	151	147	191	231	159	184	2,002	2,080
	391	304	408	372	405	369	436	465	318	364	488	448	4,151	3,859
	1,230	1,200	1,717	1,582	1,664	1,660	1,431	1,450	1,279	1,452	1,655	1,657	16,525	16,183
	43,162	40,814	60,444	53,556	59,857	59,857	49,250	49,459	50,850	50,850	60,000	60,000	593,617	577,732
	518	519	760	750	688	686	500	500	513	515	613	612	6,351	6,342
	23,536	23,961	32,813	25,100	48,953	48,953	24,930	24,930	25,641	26,152	27,937	30,716	344,874	320,014
	2,023	1,613	2,743	2,599	2,547	2,340	765	765	2,216	2,506	1,190	1,051	19,409	18,404
	540	540	850	849	1,600	1,600	850	850	1,720	1,720	718	718	9,620	9,449
	10	10	8	10	12	12	10	9	7	9	8	7	102	98
	\$220.9	\$186.3	\$265.3	\$247.3	\$176.5	\$173.1	\$216.8	\$191.2	\$200.0	\$102.7 ^d	\$244.9	\$197.1	\$2,559.9	\$2,287.4
	3,660	2,861	3,844	3,827	3,814	3,927	2,772	2,762	3,235	3,495	3,883	3,799	37,262	36,585

*Includes all other slot machines.

^bRepresents property and equipment before accumulated depreciation as reported by each casino licensee.

^cFixed asset investment for Claridge at December 31, 1985 and 1986, only includes gaming equipment because Claridge at Park Place, Incorporated leases its property and equipment as a result of a sale and refinancing agreement.

^dFixed asset investment for Tropicana at December 31, 1985 and 1986 does not include the building and certain non-gaming assets because Adamar of New Jersey, Inc. leases these assets as a result of a sale and leaseback transaction.

THE NEW JERSEY CASINO INDUSTRY FACILITY STATISTICS

at December 31, 1988 and 1987



	Atlantis		Bally		Bally's Grand ¹		Caesars		Castle		Claridge	
	1988	1987	1988	1987	1988	1987	1988	1987	1988	1987	1988	1987
Table Games:												
Blackjack	79	77	74	74	61	57	58	70	68	74	54	57
Craps	12	14	18	18	18	20	24	24	25	24	12	14
Roulette	12	12	12	12	10	10	11	11	12	12	8	8
Big Six	2	2	4	4	4	4	4	4	3	4	1	1
Baccarat	4	4	2	2	2	2	5	5	5	3	2	3
Total Table Games	109	109	110	110	95	93	102	114	113	117	77	83
Slot Machines:												
.05 slot machines	175	172	93	128	68	62	108	108	98	98	66	92
.25 slot machines	740	701	780	881	551	560	827	774	808	902	558	695
\$1 slot machines	169	169	204	148	254	193	157	159	220	220	113	108
Other slot machines ⁴	311	349	592	512	484	406	597	524	535	447	502	350
Total Slot Machines	1,395	1,391	1,669	1,669	1,357	1,221	1,689	1,565	1,661	1,667	1,239	1,245
Casino Square Footage	50,601	50,601	59,996	59,996	45,442	43,162	59,617	59,504	60,000	60,000	43,054	43,054
Number of Hotel Rooms	500	500	506	506	518	518	644	644	607	606	504	504
Convention Space												
Square Footage	26,260	26,260	49,035	49,035	23,536	23,536	26,364	26,364	47,046	28,344	27,953	26,594
Number of Parking Spaces	906	846	987	987	1,767	1,767	1,064	1,064	2,816	2,866	1,493	1,615
Number of Theatre Seats	850	850	380	380	540	540	1,050	1,100	462	462	600	600
Number of Restaurants	5	4	11	11	10	10	12	12	9	11	8	8
Fixed Asset Investment ⁵ (\$ in Millions)	\$187.9	\$184.5	\$619.2	\$550.2	\$287.4	\$286.9	\$317.5	\$289.0	\$407.4	\$346.8	\$12.4	\$11.8 ⁶
Number of Employees	2,125	1,788	3,568	3,540	3,446	3,491	3,937	3,505	3,502	3,470	2,282	2,408

¹Formerly Golden Nugget

²Officially opened April 2, 1987

³Formerly Tropicana

⁴Includes all other slot machines

⁵Represents property and equipment before accumulated depreciation as reported by each casino licensee

	Harrah's		Resorts		Sands		Showboat ²		TropWorld ³		Trump		Industry Totals	
	1988	1987	1988	1987	1988	1987	1988	1987	1988	1987	1988	1987	1988	1987
	85	84	78	78	63	63	74	74	110	82	80	74	884	864
	22	24	22	22	18	18	18	22	20	20	20	24	229	244
	12	12	11	10	12	12	12	12	10	11	12	12	134	134
	3	2	4	4	3	3	4	4	4	2	3	3	39	37
	3	2	3	3	3	3	3	2	3	2	2	2	37	33
	125	124	118	117	99	99	111	114	147	117	117	115	1,323	1,312
	119	125	84	84	79	75	124	124	119	88	96	96	1,229	1,252
	685	794	833	925	611	667	894	880	981	747	867	915	9,135	9,441
	253	290	199	217	187	168	156	136	338	243	141	157	2,391	2,208
	650	502	556	448	562	506	498	488	930	672	562	511	6,779	5,715
	1,707	1,711	1,672	1,674	1,439	1,416	1,672	1,628	2,368	1,750	1,666	1,679	19,534	18,616
	60,364	59,718	59,857	59,857	50,090	49,236	59,388	59,388	87,760	60,000	60,000	60,000	696,169	664,516
	760	760	689	689	500	500	516	516	1,004	507	566	585	7,314	6,835
	32,348	32,348	48,953	48,953	26,549	24,930	45,940	45,940	52,106	25,641	27,417	27,417	433,507	385,362
	2,930	2,963	2,721	2,581	2,595	2,595	2,534	2,534	4,070	2,720	2,940	2,940	26,823	25,478
	850	850	1,600	1,650	850	850	1,550	350	1,860	1,720	750	750	11,342	10,102
	9	8	12	12	11	11	12	12	12	7	9	8	120	114
	\$281.1	\$272.9	\$178.9	\$176.2	\$261.6	\$246.2	\$247.0	\$237.5	\$302.3	\$194.4⁷	\$353.1	\$322.1	\$3,455.8	\$3,118.5
	3,848	3,623	3,608	3,635	2,945	2,846	3,612	3,656	4,868	3,228	4,393	4,161	42,134	39,351

⁶Fixed asset investment for Claridge at December 31, 1987 and 1988, only includes gaming equipment because

The Claridge at Park Place, Incorporated leases its property and equipment as a result of a sale and refinancing agreement

⁷Fixed asset investment for TropWorld at December 31, 1987 and 1988 does not include the building and certain non-gaming assets because Adamar of New Jersey, Inc. leases these assets as a result of a sale and leaseback transaction.

STATISTICS

THE NEW JERSEY CASINO INDUSTRY FACILITY STATISTICS at December 31, 1989 and 1988

	Atlantis ¹		Bally's Grand		Bally's Park Place		Caesars		Claridge		Harrah's Marina	
	1989	1988	1989	1988	1989	1988	1989	1988	1989	1988	1989	1988
Table Games:												
Blackjack	—	79	62	61	74	74	58	58	50	54	76	85
Craps	—	12	18	18	18	18	24	24	12	12	22	22
Roulette	—	12	10	10	12	12	11	11	8	8	18	12
Big Six	—	2	4	4	4	4	4	4	1	1	3	3
Baccarat	—	4	2	2	2	2	5	5	3	2	4	3
Total Table Games	—	109	96	95	110	110	102	102	74	77	123	125
Slot Machines:												
.05 slot machines	—	175	68	68	93	93	89	108	66	66	104	119
.25 slot machines	—	740	589	551	706	780	706	827	527	558	621	685
\$1 slot machines	—	169	194	254	193	204	234	157	125	113	266	253
Other slot machines ²	—	311	507	484	669	592	714	597	521	502	760	650
Total Slot Machines	—	1,395	1,358	1,357	1,661	1,669	1,743	1,689	1,239	1,239	1,751	1,707
Casino Square Footage	—	50,601	45,442	45,442	59,996	59,996	60,000	59,617	43,054	43,054	60,364	60,364
Number of Hotel Rooms	—	500	518	518	1,214	506	644	644	501	504	760	760
Convention Space												
Square Footage	—	26,260	23,536	23,536	52,675	49,035	26,364	26,364	27,512	27,953	32,348	32,348
Number of Parking Spaces	—	906	1,683	1,757	1,418	987	858	1,064	1,336	1,493	2,754	2,930
Number of Theatre Seats	—	850	509	540	380	380	1,050	1,050	600	600	850	850
Number of Restaurants	—	5	10	10	11	11	13	12	8	8	9	9
Fixed Asset Investment ³ (\$ in Millions)	—	\$187.9	\$295.3	\$287.4	\$703.5	\$619.2	\$343.2	\$317.5	\$13.2 ⁴	\$12.4 ⁴	\$299.5	\$281.1
Number of Employees	—	2,125	3,379	3,446	4,010	3,568	4,114	3,937	2,133	2,282	3,941	3,848

¹Atlantis discontinued its casino operations at 4:00 a.m. May 22, 1989

²Includes all other slot machines

³Represents property and equipment before accumulated depreciation as reported by each casino licensee

⁴Fixed asset investment for Claridge at December 31, 1988 and 1989, only includes gaming equipment because

¹⁶ The Claridge at Park Place, incorporated leases its property and equipment as a result of a sale and refinancing agreement

	Resorts		Sands		Showboat		TropWorld		Trump Castle		Trump Plaza		Industry Totals	
	1989	1988	1989	1988	1989	1988	1989	1988	1989	1988	1989	1988	1989	1988
	70	78	62	63	72	74	108	110	67	68	78	80	777	884
	20	22	18	18	18	18	20	20	21	25	20	20	211	229
	11	11	12	12	12	12	10	10	12	12	12	12	128	134
	4	4	3	3	4	4	4	4	3	3	3	3	37	39
	3	3	4	3	6	3	5	3	5	5	4	2	43	37
Total	108	118	99	99	112	111	147	147	108	113	117	117	1,196	1,323
	89	84	72	79	88	124	119	119	86	98	92	96	966	1,229
	735	833	563	611	658	894	999	981	749	808	767	867	7,620	9,135
	209	199	185	187	191	156	276	338	249	220	199	141	2,321	2,391
	629	556	586	562	723	498	975	930	603	535	608	562	7,295	6,779
Total	1,662	1,672	1,406	1,439	1,660	1,672	2,369	2,368	1,687	1,661	1,666	1,666	18,202	19,534
	59,849	59,857	50,186	50,090	58,853	59,388	90,827	87,760	60,000	60,000	60,000	60,000	648,571	696,196
	681	689	500	500	516	516	1,014	1,004	700	607	536	566	7,584	7,314
	49,647	48,953	26,549	26,549	45,067	45,940	52,106	52,106	52,406	47,046	27,417	27,417	415,627	433,507
	2,535	2,721	2,595	2,595	2,534	2,534	4,381	4,070	2,816	2,816	2,858	2,940	25,768	26,823
	1,600	1,600	850	850	1,700	1,550	1,860	1,860	1,562	462	750	750	11,711	11,342
	12	12	12	11	12	12	12	12	10	9	10	9	119	120
Total	\$236.8	\$178.9	\$281.1	\$261.6	\$258.0	\$247.0	\$313.6⁵	\$302.3⁵	\$457.5	\$407.4	\$386.4	\$353.1	\$3,588.1	\$3,455.8
Total	3,029	3,608	3,088	2,945	3,818	3,612	4,935	4,868	3,669	3,502	4,511	4,393	40,627	42,134

⁵Fixed asset investment for TropWorld at December 31, 1988 and 1989 does not include the original building and certain non-gaming assets because Adamar of New Jersey, Inc. leases these assets as a result of a sale and leaseback transaction.

STATISTICS

CASINO INDUSTRY FACILITY STATISTICS

at December 31, 1989 and 1990

	Bally's Grand		Bally's Park Place		Caesars		Claridge		Harrah's Marina		Resorts	
	1990	1989	1990	1989	1990	1989	1990	1989	1990	1989	1990	1989
Table Games:												
Black Jack	60	62	72	74	58	58	49	50	83	76	68	70
Craps	18	18	18	18	24	24	8	12	20	22	20	20
Roulette	10	10	12	12	11	11	7	8	18	18	13	11
Big Six	4	4	4	4	4	4	1	1	2	3	4	4
Baccarat	4	2	4	2	5	5	2	3	4	4	4	3
Total Table Games	96	96	110	110	102	102	67	74	127	123	109	108
Slot Machines:												
.05 slot machines	69	68	92	93	89	89	66	66	91	104	83	89
.25 slot machines	500	589	656	706	568	706	510	527	582	621	533	735
\$1 slot machines	162	194	203	193	243	234	188	125	253	266	190	209
Other slot machines ^a	630	507	710	699	850	714	558	521	856	760	844	629
Total Slot Machines	1,361	1,358	1,661	1,661	1,750	1,743	1,322	1,239	1,782	1,751	1,650	1,662
Casino Square Footage	45,442	45,442	59,996	59,996	60,000	60,000	43,579	43,054	61,387	60,364	59,896	59,849
Number of Hotel Rooms	518	518	1,201	1,214	636	644	501	501	760	760	673	681
Convention Space Square Footage	26,210	23,536	52,475	52,675	26,364	26,364	26,593	27,512	29,651	32,348	40,424	49,647
Number of Parking Spaces	1,683	1,683	2,571	1,418	2,951	858	1,268	1,336	2,480	2,754	2,535	2,535
Number of Theatre Seats	520	509	380	380	1,100	1,050	550	600	850	850	1,600	1,600
Number of Restaurants	9	10	11	11	14	13	10	8	9	9	8	12
Fixed Asset Investment ^b (\$ in Millions)	\$301.3	\$295.3	\$728.4	\$675.5	\$386.9	\$343.2	\$14.4 ^c	\$13.2 ^c	\$330.8	\$299.5	\$140.2	\$241.9
Number of Employees	3,269	3,397	4,230	3,854	3,538	4,114	2,128	2,312	3,707	3,941	4,328	3,663

^a Includes all other slot machines

^b Represents property and equipment before accumulated depreciation as reported by each casino licensee

^c Fixed asset investment for Claridge at December 31, 1989 and 1990, only includes gaming equipment because The Claridge at Park Place, incorporated leases its property and equipment as a result of a sale and refinancing agreement

	Sands		Showboat		TropWorld		Trump Castle		Trump Plaza		Trump Taj Mahal ^e		Industry	
	1990	1989	1990	1989	1990	1989	1990	1989	1990	1989	1990	1989	1990	1989
	62	62	66	72	105	108	73	67	78	78	102	-	876	777
	18	18	19	18	20	20	17	21	20	20	30	-	232	211
	12	12	10	12	14	10	12	12	12	12	23	-	154	128
	3	3	2	4	3	4	2	3	3	3	6	-	38	37
	4	4	6	6	5	5	7	5	4	4	6	-	55	43
	99	99	103	112	147	147	111	108	117	117	167	-	1,355	1,196
	72	72	90	88	119	119	86	86	92	92	158	-	1,107	966
	472	563	592	658	705	705	598	749	692	767	1,398	-	7,743	7,620
	173	185	154	191	173	173	231	249	208	199	294	-	2,472	2,321
	674	586	890	723	1,300	1,300	756	603	737	608	1,059	-	9,864	7,295
	1,391	1,406	1,726	1,660	2,297	2,297	1,671	1,687	1,666	1,666	2,909	-	21,186	18,202
	50,123	50,186	59,280	58,853	90,827	90,827	60,000	60,000	60,000	60,000	120,000	-	770,530	648,571
	500	500	516	516	1,014	1,014	703	700	556	536	1,250	-	8,828	7,584
	26,549	26,549	44,358	45,067	52,106	52,106	44,011	52,406	27,417	27,417	142,851	-	539,009	415,627
	2,081	2,595	2,534	2,534	3,776	4,381	2,816	2,816	2,773	2,858	4,320	-	31,788	25,768
	840	850	1,000	1,700	1,860	1,860	1,562	1,562	750	750	5,200	-	16,212	11,711
	12	12	9	12	12	12	15	10	11	10	13	-	133	119
	\$299.1	\$281.1	\$272.2	\$258.0	\$321.6 ^d	\$313.6 ^d	\$469.9	\$456.9	\$396.6	\$386.4	\$797.8	-	\$4,459.2	\$3,564.6
	3,381	3,407	3,851	4,002	3,642	4,935	3,383	3,669	3,948	4,333	5,836	-	45,241	41,627

^d Fixed asset investment for TropWorld at December 31, 1989 and 1990 does not include the original building and certain non-gaming assets because Adamar of New Jersey, Inc. leases these assets as a result of a sale and leaseback transaction

^e Trump Taj Mahal commenced casino operations on April 4, 1990

Statistics

CASINO INDUSTRY FACILITY

As of December 31, 1990 and 1991

	Bally's Grand		Bally's Park Place		Caesars		Claridge		Harrah's Marina		Resorts	
	1991	1990	1991	1990	1991	1990	1991	1990	1991	1990	1991	1990
Table Games:												
BlackJack	58	60	73	72	52	58	45	49	74	83	60	68
Craps	18	18	16	18	20	24	10	8	16	20	16	20
Roulette	10	10	12	12	13	11	6	7	18	18	13	13
Big Six	3	4	2	4	2	4	1	1	2	2	4	4
Baccarat	4	4	4	4	5	5	2	2	4	4	4	4
Red Dog (a)	2	-	1	-	1	-	1	-	2	-	2	-
Sic Bo (b)	1	-	1	-	2	-	-	-	1	-	-	-
Total Table Games	96	96	109	110	95	102	65	67	117	127	99	109
Slot Machines:												
.05 slot machines	69	69	92	92	91	89	69	66	94	91	85	83
.25 slot machines	458	500	675	656	549	568	416	510	519	582	593	533
\$1 slot machines	167	162	224	203	327	243	217	188	315	253	193	190
Other slot machines (c)	669	630	812	710	842	850	667	558	939	856	817	844
Total Slot Machines	1,363	1,361	1,803	1,661	1,809	1,750	1,369	1,322	1,867	1,782	1,688	1,650
Casino Square Footage	45,442	45,442	63,033	59,996	60,000	60,000	43,579	43,579	61,387	61,387	59,896	59,896
Number of Hotel Rooms	518	518	1,267	1,201	649	636	501	501	760	760	671	673
Convention Space Square Footage	26,210	26,210	52,475	52,475	25,659	26,364	27,113	26,593	35,027	29,651	40,424	40,424
Number of Parking Spaces	1,723	1,683	2,319	2,571	2,895	2,951	1,268	1,268	2,678	2,480	1,538	2,535
Number of Theatre Seats	520	520	380	380	1,050	1,100	550	550	850	850	1,440	1,600
Number of Restaurants	9	9	11	11	13	14	10	10	9	9	8	8
Fixed Asset Investment (\$ in Millions) (d)	303.1	301.3	736.8	728.4	396.8	386.9	13.9(e)	14.4(e)	343.9	330.8	162.6	140.2
Number of Employees	3,025	3,269	3,929	4,230	3,576	3,538	2,291	2,128	3,432	3,707	4,004	4,328

(a) Red Dog was introduced on July 3, 1991

(b) Sic Bo was introduced on December 16, 1991

(c) Includes all other slot machines

(d) Represents property and equipment before accumulated depreciation as reported by each casino licensee

(e) Fixed asset investment for Claridge at December 31, 1990 and 1991, only includes gaming equipment because

	Sands		Showboat		TropWorld		Trump Castle		Trump Plaza		Trump Taj Mahal		Industry Totals	
	1991	1990	1991	1990	1991	1990	1991	1990	1991	1990	1991	1990	1991	1990
	61	62	46	66	97	105	56	73	69	78	99	102	790	876
	16	18	16	19	20	20	17	17	16	20	30	30	211	232
	13	12	10	10	16	14	12	12	13	12	21	23	157	154
	2	3	1	2	3	3	2	2	3	3	6	6	31	38
	6	4	5	6	5	5	5	7	5	4	6	6	55	55
	3	-	2	-	4	-	2	-	1	-	2	-	23	-
	-	-	-	-	1	-	1	-	1	-	1	-	9	-
	101	99	80	103	146	147	95	111	108	117	165	167	1,276	1,355
	73	72	96	90	122	119	49	86	84	92	158	158	1,082	1,107
	418	472	663	592	492	705	581	598	539	629	1,217	1,398	7,120	7,743
	194	173	194	154	227	173	218	231	217	208	270	294	2,763	2,472
	711	674	943	890	1,586	1,300	781	756	833	737	1,089	1,059	10,689	9,864
	1,396	1,391	1,896	1,726	2,427	2,297	1,629	1,671	1,673	1,666	2,734	2,909	21,654	21,186
	50,123	50,123	59,457	59,280	90,774	90,827	60,000	60,000	60,000	60,000	120,000	120,000	773,691	770,530
	500	500	516	516	1,019	1,014	703	703	1,065	1,065	1,250	1,250	9,419	9,337
	26,736	26,549	59,457	44,358	52,106	52,106	52,775	44,011	27,417	27,417	143,625	142,851	569,024	539,009
	2,081	2,081	2,534	2,534	3,324	3,776	2,816	2,816	2,773	2,773	4,320	4,320	30,269	31,788
	840	840	1,000	1,000	1,860	1,860	1,760	1,562	750	750	5,200	5,200	16,200	16,212
	13	12	9	9	12	12	11	15	12	11	14	13	131	133
	300.9	299.1	280.7	272.2	320.6(f)	321.6(f)	474.5	469.9	401.9	396.6	834.9	797.8	4,570.6	4,459.2
	2,914	3,381	3,601	3,851	4,381	3,642	3,590	3,383	3,591	3,948	5,576	5,386	43,910	45,241

The Claridge at Park Place, Incorporated leases its property and equipment as a result of a sale and refinancing agreement

(f) Fixed asset investment for TropWorld at December 31, 1990 and 1991 does not include the original building and certain non-gaming assets because Adamar of New Jersey, Inc. leases these assets as a result of a sale and leaseback transaction

Statistics

CASINO INDUSTRY FACILITIES AS OF DECEMBER 1993 AND 1992

	Bally's Grand		Bally's Park Place		Caesars		Claridge		Harrah's Marina		Resorts	
	1993	1992	1993	1992	1993	1992	1993	1992	1993	1992	1993	1992
Table Games:												
Blackjack	50	53	58	60	73	54	44	44	50	60	50	56
Craps	14	14	14	14	16	16	10	10	11	14	13	12
Roulette	10	10	12	12	13	11	6	6	12	14	10	9
Big Six	3	3	3	3	2	2	1	1	1	1	1	2
Baccarat	2	1	2	2	3	3	1	0	1	1	2	2
Minibaccarat	3	3	2	2	2	3	1	3	2	1	2	2
Red Dog	1	2	1	1	0	0	1	1	0	1	0	1
Sic Bo	1	1	1	1	2	2	1	1	1	1	1	1
Pai Gow Poker (a)	3	2	2	2	3	4	2	1	2	4	2	2
Pokette (b)	0	0	0	0	0	0	0	0	0	0	0	0
Poker (c)	0	0	20	0	9	0	0	0	9	0	25	0
Total Table Games	87	89	115	97	123	95	67	67	89	97	106	87
Slot Machines:												
.05 slot machines	0	33	50	75	0	0	65	68	0	0	0	34
.25 slot machines	783	818	1,199	1,084	1,071	957	1,026	946	1,046	1,105	1,123	1,060
.50 slot machines	272	261	288	302	320	174	85	79	267	284	355	265
\$1 slot machines	331	279	393	357	553	545	178	225	485	467	379	331
\$5 slot machines	80	49	65	65	77	84	13	13	79	61	49	42
\$25 slot machines	9	7	10	10	12	17	1	1	5	2	8	5
\$100 slot machines	2	2	4	4	10	13	0	0	3	2	2	1
Other slot machines (e)	0	0	0	0	30	15	0	0	6	0	0	0
Total Slot Machines	1,477	1,449	2,009	1,897	2,073	1,805	1,368	1,332	1,891	1,921	1,916	1,738
Casino Sq. Footage	46,118	45,442	68,130	64,435	60,000	60,000	43,579	43,579	63,970	61,183	60,000	60,000
Simulcast sq. footage (e)	0	0	0	0	14,040	0	0	0	0	0	8,058	0
Number of Hotel Rooms	518	518	1,255	1,269	641	641	501	501	760	760	669	669
Number of Parking Spaces (i)	1,715	1,723	2,129	2,374	2,544	2,909	1,121	1,292	2,452	2,678	1,475	1,431
Fixed Asset Investment (\$ in Millions) (f)	\$338.9	\$311.8	\$750.9	\$741.8	\$428.7	\$411.3	\$14.4(g)	\$13.6(g)	\$374.8	\$364.9	\$199.1	\$178.1
Number of Employees	3,328	3,003	4,034	3,868	3,515	3,479	2,285	2,373	3,261	3,458	3,048	3,893

(a) Pai Gow Poker was introduced on May 12, 1992

(b) Pokette was introduced on June 25, 1992

(c) Poker was introduced on June 25, 1993

(d) Includes all other slot machines

(e) Simulcasting was introduced on May 28, 1993

(f) Represents property and equipment before accumulated depreciation as reported by each casino licensee

	Sands		Showboat		TropWorld		Trump Castle		Trump Plaza		Trump Taj Mahal		Industry Totals	
	1993	1992	1993	1992	1993	1992	1993	1992	1993	1992	1993	1992	1993	1992
Blackjack	58	47	56	41	50	66	44	51	53	61	102	98	688	691
Craps	12	14	14	12	14	16	14	16	10	9	17	22	159	169
Roulette	10	13	11	9	14	15	12	11	12	13	21	18	143	141
Big Six	1	1	2	1	1	2	1	2	2	2	4	6	22	26
Baccarat	6	4	2	2	2	3	4	4	3	2	4	5	32	29
Minibaccarat	3	2	2	2	2	2	3	3	4	4	5	2	31	29
Red Dog	0	1	2	1	1	1	0	1	0	0	1	2	7	12
Sic Bo	1	1	1	0	1	1	1	1	1	2	2	1	14	13
Pai Gow Poker (a)	2	2	2	2	4	4	2	2	1	4	7	4	32	33
Pokette (b)	0	0	0	0	0	1	0	0	0	0	0	0	0	1
Poker (c)	20	0	6	0	0	0	13	0	0	0	58	0	160	0
Total Table Games	113	85	98	70	89	111	94	91	86	97	221	158	1,288	1,144
.05 slot machines	0	0	98	94	0	0	87	74	80	48	155	156	535	582
.25 slot machines	918	898	1,738	1,451	1,365	1,387	1,287	1,094	1,027	999	1,979	1,811	14,562	13,610
.50 slot machines	291	265	180	183	398	354	266	232	244	239	320	312	3,286	2,950
\$1 slot machines	344	319	322	285	713	684	403	352	399	409	618	544	5,118	4,797
\$5 slot machines	64	62	35	20	163	89	46	42	68	56	78	79	817	662
\$25 slot machines	7	6	4	3	17	10	5	5	6	6	5	5	89	77
\$100 slot machines	3	3	2	2	9	4	2	2	4	4	3	3	44	40
Other slot machines (e)	0	0	0	0	66	32	2	2	6	7	0	0	110	56
Total Slot Machines	1,627	1,553	2,379	2,038	2,731	2,560	2,098	1,803	1,834	1,768	3,158	2,910	24,561	22,774
Casino Sq. Footage	49,818	49,789	64,766	59,858	90,774	90,774	70,000	62,595	60,000	60,000	120,000	120,000	797,155	777,655
Simulcast sq. footage (e)	9,982	0	14,949	0	0	0	0	0	0	0	10,110	0	57,139	0
Number of Hotel Rooms	534	534	516	516	1,020	1,021	725	725	557	557	1,250	1,250	8,946	8,961
Number of Parking Spaces (i)	1,300	2,081	2,534	2,534	3,557	3,342	2,917	2,816	2,508	2,773	6,572	4,320	30,824	30,273
Fixed Asset Investment (\$ in Millions) (f)	\$314.7	\$303.8	\$359.6	\$298.7	\$594.6	\$325.4(h)	\$493.5	\$483.1	\$415.6	\$409.7	\$863.3	\$846.6	\$5,148.1	\$4,688.8
Number of Employees	3,376	3,278	3,671	3,671	4,183	4,440	3,712	3,081	3,599	3,705	6,099	5,991	44,111	44,240

(g) Fixed asset investment for the Claridge at December 31, 1993 and 1992 primarily represents gaming equipment because the Claridge leases its hotel property and non-gaming equipment

(h) Fixed asset investment for TropWorld at December 31, 1992 and 1991 does not include the original building and certain non-gaming assets because Adamar of New Jersey, inc. was leasing these assets in 1992

(i) Sands' decrease is attributable to its addition of simulcasting, which used portions of the parking area. Taj Mahal's increase is primarily due to the inclusion of valet parking spaces in 1993. The remaining changes are primarily attributable to changes in the number of reserved spaces.

Statistics

Casino Industry Facility

As of December 31, 1995 and 1994

	THE GRAND		BALLY'S PARK PLACE		CAESARS		CLARIDGE		HARRAH'S MARINA		RESORTS		SANDS		SHOWBOAT		TROPWORLD		TRUMP CASTLE		TRUMP PLAZA		TRUMP TAJ MAHAL		INDUSTRY TOTALS		
	1995	1994	1995	1994	1995	1994	1995	1994	1995	1994	1995	1994	1995	1994	1995	1994	1995	1994	1995	1994	1995	1994	1995	1994	1995	1994	
Table Games:																											
Blackjack	49	48	53	56	52	52	40	49	51	47	43	45	60	54	47	61	51	48	43	43	54	56	81	87	624	646	
Craps	12	14	8	14	14	16	10	10	11	11	10	11	12	14	12	14	14	14	13	15	10	11	15	18	141	162	
Roulette	10	10	12	12	13	13	5	6	12	13	11	9	15	16	13	11	13	14	12	12	12	12	18	19	146	147	
Big Six	2	3	2	3	2	2	1	1	1	1	1	1	2	2	2	2	1	1	1	1	2	2	4	2	22	21	
Baccarat	2	2	2	2	3	3	1	-	-	1	2	3	5	7	3	3	3	2	3	2	4	3	6	5	34	33	
Minibaccarat	4	3	3	2	3	3	1	1	2	2	1	2	4	5	2	2	2	2	3	3	5	4	4	5	34	34	
Red Dog	-	1	-	1	-	-	-	1	-	-	-	-	-	-	-	1	1	1	-	-	-	-	1	1	2	6	
Sic Bo	1	1	1	1	2	2	1	1	-	1	1	1	1	1	1	1	1	1	1	1	1	1	1	2	12	14	
Pal Gow Poker	3	3	4	2	3	3	1	1	2	2	1	2	4	4	1	2	2	4	2	2	2	2	5	8	30	35	
Pal Gow	1	-	-	-	1	-	-	-	-	-	-	-	3	-	-	-	-	-	-	-	-	-	4	-	9	0	
Poker	14	-	22	24	7	14	-	8	-	9	18	18	16	19	6	18	6	6	6	10	-	-	64	62	159	188	
Double Down Stud Poker (a)	-	1	-	-	-	-	-	-	-	-	-	-	-	-	-	-	-	-	-	-	-	-	-	-	-	1	
Caribbean Stud Poker (b)	4	2	6	2	5	2	3	-	6	2	8	4	4	2	7	2	4	-	8	4	4	-	10	3	69	23	
Let It Ride Poker (c)	1	-	1	-	2	-	1	-	4	-	2	-	-	-	-	-	2	-	-	-	3	-	3	-	19	-	
Total Table Games	103	88	114	119	107	110	64	78	89	89	98	96	126	124	94	117	101	93	92	93	97	91	216	212	1,301	1,310	
Keno Windows (d)	4	-	6	6	6	8	-	4	4	8	5	7	4	4	1	5	6	6	-	7	-	-	10	15	46	70	
Slot Machines:																											
.05 Slot Machines	-	-	24	48	-	-	40	75	-	-	-	-	-	-	70	98	-	-	73	58	80	80	135	104	422	463	
.25 Slot Machines	1,056	776	1,403	1,332	1,259	1,062	1,306	1,304	1,053	1,037	1,416	1,151	1,240	1,215	2,435	2,212	1,684	1,506	1,269	1,236	1,376	1,342	2,160	2,272	17,657	16,445	
.50 Slot Machines	228	190	270	271	467	294	183	127	268	277	445	364	286	301	283	233	377	393	285	306	243	271	350	345	3,685	3,372	
\$1 Slot Machines	429	336	471	446	580	541	316	365	565	552	408	370	413	412	430	436	662	699	514	450	522	419	642	599	5,952	5,625	
\$5 Slot Machines	86	84	82	83	66	75	27	15	89	79	52	50	73	78	49	40	102	107	78	54	75	60	96	90	875	815	
\$25 Slot Machines	9	9	7	10	8	8	3	1	5	5	10	7	7	7	1	4	10	12	9	7	6	6	10	8	85	84	
\$100 Slot Machines	2	2	3	4	6	6	-	-	3	4	3	2	3	3	1	2	6	8	4	4	4	4	3	3	38	42	
Other Slot Machines	25	10	66	38	62	53	-	-	29	8	4	-	-	-	7	-	107	72	37	7	6	7	-	-	343	195	
Total Slot Machines	1,835	1,407	2,326	2,232	2,448	2,039	1,875	1,887	2,012	1,962	2,338	1,944	2,022	2,016	3,276	3,025	2,948	2,797	2,269	2,122	2,312	2,189	3,396	3,421	29,057	27,041	
Casino Square Footage	58,124	46,297	71,380	71,380	67,470	59,947	55,624	49,066	65,551	64,293	70,000	60,000	53,192	54,464	76,595	79,963	92,163	92,191	71,031	69,338	73,604	72,943	120,539	120,000	875,233	839,882	
Simulcast Square Footage	1,517	-	8,679	8,679	6,504	13,441	-	6,551	-	-	8,058	8,058	22,962	20,617	20,486	14,949	-	-	3,798	3,742	-	-	12,317	12,317	84,321	88,354	
Number of Hotel Rooms	508	508	1,258	1,265	638	641	504	501	760	760	668	668	532	534	800	800	1,020	1,020	728	725	732	555	1,250	1,250	9,398	9,227	
Number of parking Spaces (e)	1,798	1,822	2,309	2,306	2,138	2,174	398	398	2,337	2,482	1,475	1,475	1,738	1,791	3,514	2,567	2,781	3,069	2,986	2,986	2,892	2,803	5,231	5,231	29,597	29,104	
Fixed Asset Investment (\$ in Millions) (f)	\$401.6	\$384.8	\$783.1	\$772.8	\$427.0	\$409.4	\$35.7	\$19.9	\$394.2	\$364.5	\$219.4	\$206.4	\$312.9	\$289.8	\$433.3	\$419.1	\$636.8	\$600.1	\$509.2	\$501.7	\$543.0	\$436.2	\$909.0	\$886.2	\$5,605.2	\$5,299.9	
Number of Employees	3,331	3,119	4,242	4,123	4,014	3,546	2,528	2,504	3,564	3,492	3,911	3,014	3,296	3,543	3,879	3,798	4,213	4,110	3,879	3,455	3,915	3,620	6,514	6,570	47,286	44,894	

- a) Double Down Stud Poker was introduced in March 1994.
 b) Caribbean Stud Poker was introduced in November 1994.
 c) Let It Ride Poker was introduced in March 1995.
 d) Keno was introduced in June 1994.

- e) The more significant changes in parking spaces from 1994 primarily represent the impact of reconfigurations and various expansion activities.
 f) Represents property and equipment before accumulated depreciation as reported by each casino. Fixed asset investment for Claridge primarily represents gaming equipment, as well as construction-in-progress on a parking garage for 1995, since Claridge leases its hotel property and non-gaming equipment.

Financial Statistics

THE NEW JERSEY CASINO INDUSTRY STATISTICS AT DECEMBER 31, 1997 AND 1996

	AC HILTON (a)		BALLY'S PARK PLACE		CAESARS		CLARIDGE		HARRAH'S MARINA		RESORTS		SANDS		SHOWBOAT		TROPICANA		TRUMP MARINA (b)		TRUMP PLAZA		TRUMP TAJ MAHAL		INDUSTRY TOTALS	
	1997	1996	1997	1996	1997	1996	1997	1996	1997	1996	1997	1996	1997	1996	1997	1996	1997	1996	1997	1996	1997	1996	1997	1996	1997	1996
TABLE GAMES:																										
Blackjack	51	51	93	52	56	53	36	41	48	45	45	42	57	60	48	48	56	54	46	40	65	88	74	79	675	653
Craps	10	10	14	10	13	14	8	10	9	9	9	9	11	12	10	10	14	14	12	13	10	12	14	15	134	138
Roulette	10	10	19	12	12	13	5	5	12	12	10	11	14	12	13	13	13	13	9	9	15	15	18	19	150	144
Big Six	1	1	4	2	2	2	1	1	1	1	2	2	2	2	2	2	1	2	1	1	2	3	4	4	23	23
Baccarat	2	2	2	2	3	4	2	-	1	-	3	2	5	3	5	3	3	3	3	3	2	4	7	6	38	32
Minibaccarat	6	4	2	2	4	3	3	1	1	2	1	2	3	3	2	1	8	4	4	3	7	5	3	5	44	35
Red Dog	0	-	0	-	-	-	-	-	-	-	-	-	-	-	-	-	-	-	-	-	-	-	-	1	0	1
Sic Bo	1	1	1	1	3	2	1	1	-	-	1	1	1	1	1	1	1	1	1	1	2	1	2	2	15	13
Pai Gow Poker	5	4	5	2	4	4	2	1	2	2	1	2	2	2	2	2	5	4	4	3	3	2	8	10	43	38
Pai Gow	3	2	1	-	3	2	-	-	-	-	1	1	1	2	1	1	6	5	2	2	2	1	7	6	27	22
Poker	8	11	16	16	7	9	-	-	8	8	17	18	16	16	-	6	50	50	-	6	-	-	63	64	185	204
Caribbean Stud Poker	6	6	8	6	4	5	4	3	7	8	4	6	6	6	6	8	6	6	6	6	4	4	10	12	71	76
Let It Ride Poker	4	3	10	5	5	3	2	2	6	6	2	2	4	2	6	5	4	4	6	6	5	6	7	8	61	52
Mini-Craps (c)	-	-	-	-	-	-	1	-	2	3	-	-	1	1	-	-	-	-	1	-	-	-	-	-	4	6
Three Card Poker (d)	-	-	-	-	-	-	-	-	-	-	2	2	-	-	-	-	-	-	-	-	-	-	-	-	2	2
Mini-Dice (e)	-	-	-	-	-	-	-	-	-	-	-	-	-	-	-	-	-	-	-	-	-	-	1	-	1	0
Total Table Games	107	105	175	110	116	114	65	65	97	96	98	101	123	122	96	100	167	161	94	93	117	141	218	231	1,473	1,439
KENO WINDOWS	4	4	4	4	6	6	-	-	4	4	4	5	4	4	-	1	7	7	-	-	-	-	10	10	43	45
SLOT MACHINES:																										
\$.05 Slot Machines	-	-	172	24	-	-	15	40	-	-	-	-	-	-	75	39	-	-	35	77	287	200	210	139	794	519
\$.25 Slot Machines	1,088	1,081	2,512	1,374	1,430	1,536	1,288	1,312	1,365	1,431	1,500	1,430	1,317	1,249	2,705	2,636	2,144	1,811	1,233	1,223	2,532	2,534	2,752	2,375	21,866	19,992
\$.50 Slot Machines	241	261	468	292	482	477	158	162	270	272	359	441	257	265	317	310	463	419	293	325	512	624	322	352	4,142	4,200
\$1 Slot Machines	369	364	671	471	582	592	262	282	708	663	325	389	408	408	551	533	771	675	448	527	623	632	694	764	6,412	6,300
\$5 Slot Machines	80	80	117	82	72	65	27	24	113	104	58	53	68	68	58	61	143	103	81	110	86	71	106	104	1,009	925
\$25 Slot Machines	12	10	11	11	13	9	1	1	9	5	4	9	6	6	2	2	18	8	12	15	8	7	13	13	109	96
\$100 Slot Machines	5	2	3	3	7	6	-	-	3	3	2	3	3	3	2	2	9	4	4	6	4	4	4	4	46	40
Other Slot Machines	31	31	152	74	95	102	-	-	61	29	6	25	17	17	27	22	171	159	46	56	38	151	35	48	679	714
Total Slot Machines	1,826	1,829	4,106	2,331	2,681	2,787	1,751	1,821	2,529	2,507	2,254	2,350	2,076	2,016	3,737	3,605	3,719	3,179	2,152	2,339	4,090	4,223	4,136	3,799	35,057	32,786
Casino Square Footage	58,124	58,124	118,710	71,380	75,642	78,470	58,705	58,705	80,775	82,023	67,655	70,000	57,812	53,427	80,707	76,595	114,205	99,986	73,734	73,734	138,305	139,474	116,199	126,784	1,040,573	988,702
Simulcast Square Footage	1,517	1,517	36,124	8,679	6,765	5,898	-	-	-	-	8,058	8,058	15,447	22,962	20,998	20,486	10,183	10,183	2,150	2,150	-	-	31,521	12,317	132,763	92,250
Number Of Hotel Rooms	801	454	1,268	1,268	1,144	556	504	504	1,174	760	662	662	532	532	800	800	1,624	1,624	728	728	1,404	1,395	1,250	1,250	11,891	10,533
Number of Parking Spaces	1,848	1,848	2,119	2,269	2,018	2,145	1,460	1,174	2,878	2,395	1,719	1,483	1,738	1,738	3,514	3,514	2,968	2,844	2,986	2,986	3,572	3,572	7,180	5,057	34,000	31,025
Fixed Asset Investment (\$ in Millions) (f)	\$486.7	\$427.7	\$947.1	\$820.5	\$735.5	\$508.3	\$45.4	\$46.6	\$483.8	\$450.8	\$228.9	\$209.2	\$320.5	\$317.0	\$457.3	\$438.9	\$689.2	\$678.4	\$521.4	\$514.7	\$719.1	\$694.6	\$1,007.0	\$965.0	\$6,641.9	\$6,071.7
Number of Employees	3,432	3,280	5,473	4,243	4,126	4,045	2,508	2,462	3,543	3,569	3,526	3,933	3,071	3,292	3,551	3,780	5,116	5,053	3,487	3,442	5,275	5,536	6,015	6,321	49,123	48,958

a) Formerly Bally's Grand

b) Formerly Trump Castle

c) Mini-Craps was introduced in January 1996.

d) Three Card Poker was introduced in June 1996.

e) Mini-Dice was introduced in November 1996.

f) Represents property and equipment before accumulated depreciation. Fixed asset investment for Claridge primarily represents gaming equipment and the parking garage, since Claridge leases its hotel property and non-gaming equipment.

NEW JERSEY CASINO INDUSTRY FACILITY STATISTICS 1999/1998

	AC HILTON		BALLY'S PARK PLACE		CAESARS		CLARIDGE		HARRAH'S		RESORTS		SANDS		SHOWBOAT		TROPICANA		TRUMP MARINA		TRUMP PLAZA [c]		TRUMP TAJ MAHAL		INDUSTRY TOTALS		
	1999	1998	1999	1998	1999	1998	1999	1998	1999	1998	1999	1998	1999	1998	1999	1998	1999	1998	1999	1998	1999	1998	1999	1998	1999	1998	
TABLE GAMES:																											
Blackjack	46	46	76	92	64	74	32	36	42	37	41	39	44	43	42	49	56	56	35	44	51	56	64	70	593	642	
Craps	10	10	14	12	12	12	8	8	8	9	8	6	8	8	6	8	14	14	11	12	8	8	11	12	118	119	
Roulette	10	11	18	19	16	13	5	5	8	9	8	8	11	12	9	13	13	13	9	9	11	13	17	19	135	144	
Big Six	-	1	3	3	2	2	1	1	-	1	1	1	2	2	1	2	1	1	1	1	1	2	2	3	15	20	
Baccarat	3	2	2	2	3	3	2	2	-	1	3	2	4	4	3	3	5	3	3	3	2	2	5	5	35	32	
Minibaccarat	7	6	2	2	4	4	3	2	1	2	2	2	3	3	1	2	6	7	2	2	6	6	5	3	42	41	
Sic Bo	-	1	1	1	2	2	-	-	-	-	-	-	1	1	-	1	1	1	-	1	1	1	1	1	2	7	11
Pai Gow Poker	4	4	5	5	5	4	3	2	2	2	2	2	2	2	2	2	6	5	3	3	3	3	12	9	49	43	
Pai Gow	3	3	2	2	1	1	2	2	-	-	-	1	2	1	2	6	6	6	2	3	1	2	7	6	27	29	
Poker	-	-	15	16	6	6	-	-	8	8	-	1	12	12	-	-	43	50	-	-	-	-	67	64	151	156	
Caribbean Stud Poker	6	6	6	6	5	4	3	3	4	5	4	4	6	6	6	6	6	6	5	5	5	5	8	10	64	66	
Let It Ride Poker	4	4	8	8	8	8	2	2	6	5	4	4	4	4	4	6	5	4	6	7	5	5	6	7	62	64	
Mini-Craps	-	-	-	-	-	-	1	1	-	-	-	-	1	1	-	-	-	-	-	-	-	-	-	-	2	2	
Mini-Dice	-	-	-	-	-	-	-	-	-	-	-	-	-	-	-	-	-	-	-	-	-	-	1	1	1	1	
Casino War	-	-	-	-	-	-	-	-	-	1	-	-	-	-	-	1	-	1	1	-	-	-	-	-	1	3	
Spanish 21 [a]	2	-	4	-	4	-	2	-	-	-	2	-	-	-	-	-	-	-	1	-	-	-	4	-	19	-	
Total Table Games	95	94	156	168	132	133	64	64	79	80	75	69	100	99	75	95	162	166	79	91	94	103	210	211	1,321	1,373	
KENO WINDOWS																											
	-	-	4	4	6	6	-	-	4	4	-	-	-	-	-	-	-	7	-	-	-	-	10	10	24	31	
SLOT MACHINES:																											
\$.05 Slot Machines	134	50	431	264	171	-	60	36	169	-	124	-	112	29	150	88	247	144	148	51	160	439	449	266	2,355	1,367	
\$.25 Slot Machines	1,053	1,104	2,291	2,440	1,938	1,991	1,296	1,265	1,705	1,526	1,483	1,525	1,224	1,284	2,731	2,674	2,051	2,079	1,301	1,238	1,459	2,601	2,925	2,745	21,457	22,472	
\$.50 Slot Machines	197	221	420	472	503	550	139	170	218	229	213	282	220	246	227	261	427	441	228	308	264	513	322	324	3,378	4,017	
\$1 Slot Machines	337	396	537	578	678	756	221	247	577	639	304	315	349	371	541	569	712	735	408	435	383	514	600	663	5,647	6,218	
\$5 Slot Machines	54	77	94	99	112	123	33	30	103	117	45	55	4	6	63	48	121	127	77	77	75	84	104	102	946	1,003	
\$25 Slot Machines	12	13	13	11	16	13	4	4	8	9	5	7	5	3	-	-	13	15	13	13	14	14	13	13	115	118	
\$100 Slot Machines	8	10	9	6	8	7	-	-	4	3	2	-	5	3	-	-	10	10	7	7	4	4	4	4	61	54	
Other Slot Machines	25	25	214	129	140	155	-	-	42	47	7	6	22	22	32	48	128	149	50	49	34	35	65	94	759	759	
Total Slot Machines	1,820	1,896	4,009	3,999	3,566	3,595	1,753	1,752	2,826	2,570	2,183	2,190	2,001	2,025	3,744	3,688	3,709	3,700	2,232	2,178	2,393	4,204	4,482	4,211	34,718	36,008	
Casino Square Footage																											
Casino Square Footage	59,832	58,272	120,284	118,710	110,540	110,540	58,932	58,932	86,131	80,822	67,655	67,655	57,968	57,296	83,901	80,707	117,453	114,320	73,734	73,734	85,912	138,295	120,829	116,199	1,043,171	1,075,482	
Simulcast Square Footage	-	1,517	34,550	36,124	9,691	9,691	-	-	-	-	8,058	8,058	15,291	15,963	17,804	20,998	8,380	10,183	2,150	2,150	-	-	31,521	31,521	127,445	136,205	
Number Of Hotel Rooms	804	804	1,246	1,251	1,148	1,144	507	507	1,174	1,174	644	662	532	532	800	800	1,624	1,624	728	728	904	1,104	1,250	1,250	11,361	11,880	
Number of Parking Spaces	1,583	1,762	2,723	2,799	2,198	2,148	1,460	1,460	3,085	2,862	1,485	1,485	1,732	1,738	3,046	3,051	3,265	3,265	2,986	2,986	2,778	3,282	7,180	7,180	33,521	34,018	
Fixed Asset Investment																											
(\$ in Millions) [b]	\$512.3	\$505.9	\$1,008.9	\$989.6	\$853.8	\$824.0	\$39.8	\$39.6	\$526.6	\$496.2	\$290.3	\$249.6	\$346.8	\$328.2	\$480.8	\$470.9	\$724.8	\$710.6	\$536.3	\$527.1	\$410.6	\$514.5	\$1,056.0	\$1,026.0	\$6,787.0	\$6,682.2	
Number of Employees	3,285	3,378	5,393	5,447	4,474	4,688	2,379	2,411	3,461	3,477	3,185	3,245	3,069	3,037	3,278	3,353	5,141	5,084	3,428	3,482	4,323	5,124	5,950	5,766	47,366	48,492	

(a) Spanish 21 commenced operations in April 1999

(b) Represents property and equipment before accumulated depreciation. Since Claridge leases its hotel property and non-gaming equipment, fixed asset investment for Claridge primarily represents gaming equipment and the parking garage.

(c) Trump Plaza's statistics at December 1999 reflect the closing of World's Fair in October 1999.

NEW JERSEY CASINO INDUSTRY FACILITY STATISTICS YEAR END 2000/1999

	AC HILTON		BALLY'S PARK PLACE		CAESARS		CLARIDGE		HARRAH'S		RESORTS		SANDS		SHOWBOAT		TROPICANA		TRUMP MARINA		TRUMP PLAZA		TRUMP TAJ MAHAL		INDUSTRY		
	2000	1999	2000	1999	2000	1999	2000	1999	2000	1999	2000	1999	2000	1999	2000	1999	2000	1999	2000	1999	2000	1999	2000	1999	2000	1999	
TABLE GAMES:																											
Blackjack	36	46	78	76	70	64	26	32	40	42	35	41	36	44	32	42	63	56	31	35	49	51	68	64	564	593	
Craps	11	10	14	14	13	12	6	8	8	8	7	8	7	8	5	6	14	14	10	11	8	8	10	11	113	118	
Roulette	11	10	18	18	16	16	4	5	9	8	8	8	11	11	8	9	13	13	9	9	10	11	15	17	132	135	
Big Six	-	-	2	3	2	2	1	1	-	-	1	1	2	2	-	1	1	1	1	1	1	1	2	2	13	15	
Baccarat	2	3	2	2	2	3	1	2	-	-	3	3	4	4	3	3	3	5	3	3	4	2	5	5	32	35	
Minibaccarat	5	7	3	2	4	4	5	3	1	1	2	2	4	3	3	1	6	6	2	2	7	6	4	5	46	42	
Sic Bo	-	-	1	1	2	2	-	-	-	-	-	-	1	1	-	-	1	1	-	-	1	1	2	1	8	7	
Pai Gow Poker	4	4	6	5	5	5	4	3	2	2	2	2	2	2	3	2	6	6	3	3	4	3	11	12	52	49	
Pai Gow	3	3	2	2	1	1	3	2	-	-	-	-	2	2	2	1	6	6	3	2	3	1	7	7	32	27	
Poker	-	-	11	15	6	6	-	-	8	8	-	-	9	12	-	-	43	43	-	-	-	-	67	67	144	151	
Caribbean Stud Poker	5	6	8	6	5	5	4	3	4	4	4	4	4	6	5	6	6	6	4	5	5	5	8	8	62	64	
Let It Ride Poker	5	4	8	8	8	8	3	2	6	6	5	4	4	4	5	4	6	5	5	6	5	5	6	6	66	62	
Mini-Craps	-	-	-	-	-	-	-	1	-	-	-	-	-	1	-	-	-	-	-	-	-	-	-	-	-	2	
Mini-Dice	-	-	-	-	-	-	-	-	-	-	-	-	-	-	-	-	-	-	-	-	-	-	-	-	-	1	
Casino War	-	-	-	-	-	-	-	-	-	-	-	-	-	-	-	-	-	-	1	1	-	-	-	-	-	1	
Spanish 21	-	2	5	4	5	4	2	2	-	-	3	2	2	-	2	-	2	-	2	1	-	-	5	4	28	19	
Three Card Poker (a)	-	-	-	-	-	-	4	-	-	-	3	-	3	-	-	-	-	-	2	-	-	-	-	-	12	-	
Colorado Hold 'Em (a)	-	-	-	-	-	-	-	-	-	-	-	-	1	-	-	-	-	-	-	-	-	-	-	-	1	-	
Total Table Games	82	95	158	156	139	132	63	64	78	79	73	75	92	100	68	75	170	162	76	79	97	94	210	210	1,306	1,321	
KENO WINDOWS	-	-	4	4	6	6	-	-	4	4	-	-	-	-	-	-	-	-	-	-	-	-	10	10	24	24	
SLOT MACHINES:																											
Nickel	336	134	886	431	324	171	136	60	490	169	284	124	300	112	651	150	407	247	276	148	458	160	589	449	5,137	2,355	
Quarter	1,103	1,053	2,224	2,291	1,966	1,938	1,251	1,296	1,738	1,705	1,481	1,483	1,068	1,224	2,048	2,731	1,893	2,051	1,457	1,301	1,629	1,459	2,952	2,925	20,810	21,457	
Fifty Cents	187	197	421	420	451	503	127	139	222	218	207	213	188	220	142	227	445	427	205	228	271	264	310	322	3,176	3,378	
Dollars	312	337	532	537	548	678	223	221	567	577	327	304	327	349	423	541	634	712	432	408	385	383	604	600	5,314	5,647	
Five Dollars	60	54	96	94	104	112	36	33	107	103	53	45	69	65	68	63	120	121	86	77	72	75	102	104	973	946	
Twenty-Five Dollars	8	12	14	13	16	16	4	4	7	8	4	5	5	4	4	-	13	13	13	13	12	14	15	13	115	115	
One Hundred Dollars	6	8	9	9	8	8	-	-	5	4	4	2	5	5	2	-	10	10	7	7	6	4	6	4	68	61	
Other Slot Machines	14	25	129	214	148	140	-	-	110	42	7	7	25	22	7	32	128	128	50	50	34	34	33	65	685	759	
Total Slot Machines	2,026	1,820	4,311	4,009	3,565	3,566	1,777	1,753	3,246	2,826	2,367	2,183	1,987	2,001	3,345	3,744	3,650	3,709	2,526	2,232	2,867	2,393	4,611	4,482	36,278	34,718	
Casino Sq. Ft.	59,832	59,832	128,220	120,284	110,540	110,540	59,071	58,932	94,622	86,131	60,039	67,655	57,602	57,968	79,485	83,901	118,917	117,453	79,997	73,734	85,738	85,912	113,481	120,829	1,047,544	1,043,171	
Simulcast Sq. Ft.	-	-	35,453	34,550	9,691	9,691	-	-	-	-	17,905	8,058	19,492	15,291	16,056	17,804	8,380	8,380	2,135	2,150	-	-	41,390	31,521	150,502	127,445	
# of Hotel Rooms	804	804	1,246	1,246	1,148	1,148	507	507	1,174	1,174	644	644	532	532	800	800	1,624	1,624	728	728	904	904	1,250	1,250	11,361	11,361	
#Parking Spaces	1,583	1,583	2,280	2,280	2,508	2,198	1,460	1,460	2,401	3,085	1,092	1,485	1,684	1,732	3,051	3,051	3,265	3,265	2,986	2,986	2,818	2,778	7,180	7,180	32,308	33,083	
Property & Equipment																											
Gross (\$Millions) (b)	521.9	512.3	1,051.5	1,008.9	813.3	801.0	42.4	39.8	543.7	526.6	298.5	290.3	159.0	346.8	501.2	480.8	723.6	724.8	543.6	536.3	624.6	622.0	1,067.8	1,056.3	6,891.1	6,945.9	
Number of Employees	3,389	3,285	5,611	5,393	4,432	4,474	2,379	2,379	3,550	3,461	3,038	3,185	3,079	3,069	3,194	3,278	5,181	5,141	3,484	3,428	3,929	4,323	6,160	5,950	47,426	47,366	

(a) Three Card Poker and Colorado Hold'Em Poker commenced operations in July and September 2000, respectively.

(b) Represents property and equipment before accumulated depreciation. Since Claridge leases its hotel property and non-gaming equipment, property and equipment for Claridge primarily represents gaming equipment and the parking garage.

**NEW JERSEY CASINO INDUSTRY
FACILITY STATISTICS
AT YEAR END DECEMBER 31, 2002 AND 2001**

	AC HILTON		BALLY'S ATLANTIC CITY		CAESARS		CLARIDGE		HARRAH'S		RESORTS		SANDS		SHOWBOAT		TROPICANA		TRUMP MARINA		TRUMP PLAZA		TRUMP TAJ MAHAL		INDUSTRY		
	2002	2001	2002	2001	2002	2001	2002	2001	2002	2001	2002	2001	2002	2001	2002	2001	2002	2001	2002	2001	2002	2001	2002	2001	2002	2001	
TABLE GAMES:																											
Blackjack	38	39	62	66	61	59	28	30	32	29	32	32	15	33	26	29	66	62	40	37	41	42	55	68	496	526	
Craps	9	9	13	13	14	13	6	6	5	6	5	7	3	7	5	5	10	12	8	8	7	7	10	10	95	103	
Roulette	10	10	20	20	15	15	4	4	7	6	8	8	5	11	5	7	13	13	9	9	9	8	14	16	119	127	
Big Six	-	-	2	2	3	2	1	1	-	-	-	1	-	-	1	1	1	1	-	-	1	1	2	2	11	11	
Baccarat	1	2	2	2	1	2	1	1	-	-	3	3	-	1	2	3	3	2	3	2	3	5	4	22	27		
Minibaccarat	7	5	4	3	3	4	4	4	1	1	1	3	-	4	1	2	6	6	2	2	7	7	8	4	44	45	
Sic Bo	-	-	1	1	2	2	-	-	-	-	-	-	-	-	-	-	1	1	-	-	1	1	1	2	6	7	
Pai Gow Poker	4	4	6	7	4	5	2	2	1	2	1	2	-	2	3	1	5	6	3	3	5	5	7	9	41	48	
Pai Gow	3	3	1	1	1	1	2	2	-	-	-	1	-	-	-	1	6	6	2	2	4	3	4	5	23	25	
Poker	-	-	10	11	-	-	-	-	5	7	-	-	-	11	-	-	43	43	-	-	-	-	66	67	124	139	
Caribbean Stud Poker	4	4	8	8	4	5	3	3	3	3	3	4	-	3	3	3	5	6	3	4	3	3	4	5	43	51	
Let It Ride Poker	4	4	8	8	4	6	2	3	5	5	4	5	1	2	2	4	5	6	3	4	3	3	3	4	44	54	
Spanish 21	-	-	6	6	6	5	4	2	2	-	2	3	-	2	2	2	3	2	2	2	2	2	5	5	34	31	
Three Card Poker	5	4	8	6	7	4	4	4	7	5	5	5	3	3	5	3	5	4	6	4	4	3	7	6	66	51	
Colorado Hold 'Em	-	-	1	1	-	-	1	1	-	-	-	-	-	-	-	-	-	-	-	-	-	-	-	-	-	2	2
Triple Shot (a)	-	-	-	-	-	-	-	-	1	-	-	-	-	-	-	-	-	-	-	-	-	-	-	-	-	1	-
Let's Get Wild Poker (a)	-	-	1	-	-	-	1	-	-	-	-	-	-	-	-	-	-	-	-	-	-	-	-	-	-	2	-
Boston 5 Stud Poker (a)	-	-	-	-	2	-	-	-	-	-	-	-	-	-	-	-	2	-	-	-	-	-	-	-	-	4	-
Total Table Games	85	84	153	155	127	123	63	63	69	64	64	74	27	79	55	61	174	171	80	78	89	88	191	207	1,177	1,247	
KENO WINDOWS	-	-	4	4	6	6	-	-	4	4	-	-	-	-	-	-	-	-	-	-	-	-	3	8	17	22	
SLOT MACHINE																											
Nickel	464	490	982	1,058	797	722	421	356	829	658	376	473	602	386	690	738	964	865	553	430	708	637	973	836	8,359	7,649	
Quarter	946	980	2,116	2,102	1,352	1,857	961	1,116	2,011	1,565	1,456	1,507	1,117	960	2,011	1,884	1,898	2,036	1,261	1,296	1,620	1,478	2,694	2,913	19,443	19,694	
Fifty Cents	134	160	396	383	328	456	105	83	295	183	227	232	143	178	143	133	316	321	177	205	219	249	336	290	2,819	2,873	
Dollars	294	301	572	597	511	558	189	185	758	530	293	275	308	375	448	450	657	604	362	420	288	347	645	624	5,325	5,266	
Five Dollars	115	65	129	99	128	117	48	33	115	107	67	66	90	93	81	70	106	105	90	89	73	75	125	116	1,167	1,035	
Twenty-Five Dollars	8	8	21	14	18	16	6	4	11	7	6	5	8	9	4	4	14	14	18	19	13	12	14	15	141	127	
One Hundred Dollars	12	6	19	9	14	10	-	-	5	5	4	5	5	5	4	4	9	9	12	13	6	6	7	6	97	78	
Other Slot Machines	31	14	76	54	86	120	-	-	88	116	45	20	49	54	109	107	160	160	55	56	35	35	32	25	766	761	
Total Slot Machines	2,004	2,024	4,311	4,316	3,234	3,856	1,730	1,777	4,112	3,171	2,474	2,583	2,322	2,060	3,490	3,390	4,124	4,114	2,528	2,528	2,962	2,839	4,826	4,825	38,117	37,483	
Casino Sq. Ft.	59,612	59,832	129,998	128,220	117,378	117,378	49,260	58,792	127,049	89,757	65,292	68,794	61,812	56,018	89,769	88,840	128,885	128,885	65,000	65,000	91,181	87,980	120,138	117,965	1,105,374	1,067,461	
Simulcast Sq. Ft.	-	-	35,453	35,453	7,342	7,342	10,959	-	-	-	13,074	16,512	16,560	22,923	14,109	15,061	8,380	8,380	16,182	16,182	-	-	36,846	40,715	158,905	162,568	
# of Hotel Rooms	804	804	1,246	1,246	1,140	1,140	502	507	1,630	1,174	480	644	637	645	765	765	1,625	1,624	728	728	904	904	1,250	1,250	11,711	11,431	
# Parking Spaces	1,825	1,825	2,840	2,840	2,666	2,666	1,142	1,121	3,822	3,822	1,349	1,263	1,684	1,684	3,051	3,051	3,281	3,075	2,986	2,986	2,778	2,778	7,180	7,180	34,604	34,291	
Property & Equipment Gross (\$Millions)	548.4	536.9	1,146.5	1,092.1	880.5	848.1	88.5	72.9	762.6	661.9	158.1	130.6	196.0	184.0	594.2	530.8	818.7	756.9	571.1	557.2	653.0	640.6	1,115.2	1,083.6	7,532.8	7,095.6	
Number of Employees	3,298	3,337	5,672	5,636	4,803	4,646	2,220	2,282	3,259	3,172	3,066	3,151	2,511	3,005	3,176	3,129	4,739	4,958	3,016	3,109	3,512	3,561	5,548	5,606	44,820	45,592	

(a) Triple Shot commenced operations in July 2002. Let's Get Wild Poker and Boston 5 Stud Poker commenced operations in November 2002.

NEW JERSEY CASINO INDUSTRY FACILITY STATISTICS AT DECEMBER 31, 2003 AND 2002

	AC HILTON		BALLY'S ATLANTIC CITY		BORGATA		CAESARS		CLARIDGE		HARRAH'S		RESORTS		SANDS		SHU
	2003	2002	2003	2002	2003	2002	2003	2002	2003	2002	2003	2002	2003	2002	2003	2002	2003
TABLE GAMES:																	
Blackjack	37	38	88	62	74	-	57	61	-	28	30	32	25	32	31	15	25
Craps	9	9	16	13	12	-	13	14	-	6	5	5	6	5	5	3	5
Roulette	10	10	24	20	13	-	15	15	-	4	8	7	8	8	8	5	6
Big Six	-	-	2	2	1	-	3	3	-	1	-	-	-	-	-	-	1
Baccarat	1	1	2	2	2	-	2	1	-	1	-	-	4	3	1	-	2
Minibaccarat	5	7	8	4	4	-	3	3	-	4	1	1	2	1	-	-	-
Sic Bo	-	-	1	1	1	-	1	2	-	-	-	-	-	-	-	-	-
Pai Gow Poker	4	4	8	6	4	-	4	4	-	2	1	1	1	1	1	-	3
Pai Gow	3	3	3	1	2	-	1	1	-	2	-	-	-	-	-	-	2
Poker	-	-	10	10	34	-	-	-	-	-	6	5	-	-	14	-	-
Caribbean Stud Poker	4	4	10	8	-	-	4	4	-	3	3	3	3	3	2	-	2
Let it Ride Poker	4	4	8	8	4	-	5	4	-	2	5	5	3	4	3	1	3
Spanish 21	-	-	10	6	4	-	6	6	-	4	1	2	2	2	2	-	4
Three Card Poker	7	5	13	8	8	-	9	7	-	4	7	7	5	5	5	3	4
Colorado Hold 'Em	-	-	-	1	-	-	-	-	-	1	-	-	-	-	-	-	-
Triple Shot (a)	-	-	-	-	-	-	-	-	-	-	-	1	-	-	-	-	-
Let's Get Wild Poker (a)	-	-	-	1	-	-	-	-	-	1	-	-	-	-	-	-	-
Boston 5 Stud Poker (a)	1	-	3	-	-	-	3	2	-	-	-	-	1	-	1	-	-
Double Cross Poker (b)	-	-	-	-	-	-	-	-	-	-	-	-	-	-	1	-	-
Total Table Games	85	85	206	153	163	0	126	127	0	63	67	69	60	64	75	27	5
KENO WINDOWS	-	-	4	4	-	-	6	6	-	-	4	4	-	-	-	-	-
SLOT MACHINES:																	
\$.05 Slot Machines	466	464	1,275	982	892	-	794	797	-	421	816	829	393	376	519	602	90
\$.25 Slot Machines	939	946	3,214	2,116	1,619	-	1,593	1,352	-	961	2,081	2,011	1,302	1,456	1,052	1,117	2,20
\$.50 Slot Machines	156	134	506	396	216	-	285	328	-	105	300	295	240	227	150	143	19
\$1 Slot Machines	291	294	768	572	484	-	438	511	-	189	821	758	255	293	356	308	51
\$5 Slot Machines	91	115	166	129	107	-	113	128	-	48	114	115	84	67	76	90	10
\$25 Slot Machines	12	8	27	21	16	-	15	18	-	6	10	11	9	6	6	8	-
\$100 Slot Machines	12	12	13	19	10	-	16	14	-	-	5	5	7	4	5	5	-
Multi-Denominational (c)	-	-	-	-	169	-	-	-	-	-	-	-	-	-	-	-	-
Other Slot Machines	52	31	175	76	79	-	120	86	-	-	92	88	64	45	38	49	3
Total Slot Machines	2,019	2,004	6,144	4,311	3,592	-	3,374	3,234	-	1,730	4,239	4,112	2,354	2,474	2,202	2,322	3,97
Casino Square Footage	59,612	59,612	179,108	129,998	115,892	-	117,910	117,378	-	49,260	127,049	127,049	63,294	65,292	58,527	61,812	101,58
Simulcast Square Footage	-	-	46,232	35,453	9,112	-	7,342	7,342	-	10,959	-	-	11,807	13,074	19,424	16,560	14,10
Number of Hotel Rooms	804	804	1,745	1,246	2,002	-	1,140	1,140	-	502	1,630	1,630	479	479 *	637	637	1,30
Number of Parking Spaces	1,825	1,825	4,086	2,840	5,775	-	2,938	2,666	-	1,142	3,822	3,822	1,336	1,349	1,684	1,684	3,00
Property & Equipment																	
Gross (\$Millions)	\$ 555.3	\$ 548.4	\$ 1,265.8	\$ 1,146.5	\$ 1,021.6	-	\$ 903.4	\$ 880.5	-	\$ 88.5	\$ 795.6	\$ 762.8	\$ 212.7	\$ 158.8	\$ 208.4	\$ 195.7	\$ 666
Number of Employees	3,233	3,298	7,166	5,672	5,076	-	4,399	4,803	-	2,220	3,033	3,259	2,815	3,066	2,221	2,511	3,00

(a) Triple Shot commenced operations in July 2002. Let's Get Wild and Boston 5 Stud Poker commenced operations in November 2002.

(b) Double Cross Poker commenced operations in July 2003.

(c) Multi-Denominational Slot Machines approved for use in May 2003.

*N.J.A.C. 5:12-83 (c) requires a casino hotel to include an approved hotel containing at least 500 qualifying sleeping units. The Commission approved Resorts to fall under the 500 room requirement during construction of its new hotel tower.

HARRAH'S		RESORTS		SANDS		SHOWBOAT		TROPICANA		TRUMP MARINA		TRUMP PLAZA		TRUMP TAJ MAHAL		INDUSTRY	
2003	2002	2003	2002	2003	2002	2003	2002	2003	2002	2003	2002	2003	2002	2003	2002	2003	2002
30	32	25	32	31	15	25	26	66	66	39	40	41	41	55	55	568	496
5	5	6	5	5	3	5	5	10	10	7	8	6	7	11	10	105	95
8	7	8	8	8	5	6	5	13	13	6	9	9	9	13	14	133	119
-	-	-	-	-	-	1	1	1	1	-	-	1	1	1	2	10	11
-	-	4	3	1	-	2	2	3	3	2	2	2	2	4	5	25	22
1	1	2	1	1	-	2	1	6	6	2	2	8	7	7	8	49	44
-	-	-	-	-	-	-	-	1	1	-	-	1	1	1	1	6	6
1	1	1	1	1	-	3	3	6	5	3	3	5	5	7	7	47	41
-	-	-	-	-	-	2	-	6	6	1	2	3	4	4	4	25	23
6	5	-	-	14	-	-	-	42	43	-	-	-	-	66	66	172	124
3	3	3	3	2	-	2	3	3	5	2	3	3	3	3	4	39	43
5	5	3	4	3	1	3	2	3	5	2	3	3	3	4	3	47	44
1	2	2	2	2	-	2	2	2	3	2	2	2	2	6	5	39	34
7	7	5	5	5	3	5	5	7	5	7	6	5	4	9	7	87	66
-	-	-	-	-	-	-	-	-	-	-	-	-	-	-	-	-	2
-	1	-	-	-	-	-	-	-	-	-	-	-	-	-	-	-	1
-	-	-	-	-	-	-	-	-	-	-	-	-	-	-	-	-	2
-	-	1	-	1	-	-	-	2	2	1	-	1	-	2	-	15	4
-	-	-	-	1	-	-	-	1	-	1	-	-	-	-	-	3	-
67	69	60	64	75	27	58	55	172	174	75	80	90	89	193	191	1,370	1,177
4	4	-	-	-	-	-	-	-	-	-	-	-	-	2	3	16	17
816	829	393	376	519	602	907	690	1,039	964	637	553	705	708	998	973	9,441	8,359
2,081	2,011	1,302	1,456	1,052	1,117	2,200	2,011	1,929	1,898	1,188	1,261	1,590	1,620	2,417	2,694	21,124	19,443
300	295	240	227	150	143	198	143	350	316	197	177	189	219	345	336	3,132	2,819
821	758	255	293	356	308	517	448	736	657	340	362	285	288	710	645	6,001	5,325
114	115	84	67	76	90	109	81	131	106	73	90	73	73	142	125	1,279	1,167
10	11	9	6	6	8	4	4	17	14	11	18	13	13	13	14	153	141
5	5	7	4	5	5	4	4	12	9	6	12	6	6	9	7	105	97
-	-	-	-	-	-	-	-	-	-	-	-	-	-	-	-	169	-
92	88	64	45	38	49	35	109	189	160	49	55	45	35	36	32	974	766
4,239	4,112	2,354	2,474	2,202	2,322	3,974	3,490	4,403	4,124	2,501	2,528	2,906	2,962	4,670	4,826	42,378	38,117
127,049	127,049	63,294	65,292	58,527	61,812	101,586	89,769	140,026	128,885	65,057	65,000	91,181	91,181	120,549	120,138	1,239,791	1,105,374
-	-	11,807	13,074	19,424	16,560	14,109	14,109	8,380	8,380	14,601	16,182	-	-	36,846	36,846	167,853	158,905
1,630	1,630	479	479 *	637	637	1,309	765	1,625	1,625	728	728	904	904	1,250	1,250	14,253	11,710
3,822	3,822	1,336	1,349	1,684	1,684	3,051	3,051	3,189	3,281	2,986	2,986	2,698	2,778	7,180	7,180	40,570	34,604
\$ 795.6	\$ 762.8	\$ 212.7	\$ 158.8	\$ 208.4	\$ 195.7	\$ 666.8	\$ 594.6	\$ 947.4	\$ 818.7	\$ 581.9	\$ 571.1	\$ 665.3	\$ 653.0	\$ 1,140.8	\$ 1,115.2	\$ 8,965.0	\$ 7,533.8
3,033	3,259	2,815	3,066	2,221	2,511	3,052	3,176	4,490	4,739	2,742	3,016	3,073	3,512	4,859	5,548	46,159	44,820

* hotel to include an approved hotel containing
ts. The Commission approved Resorts to fall
ig construction of its new hotel tower.

NEW JERSEY CASINO INDUSTRY FACILITY STATISTICS AT DECEMBER 31, 2004 AND 2003

	AC HILTON		BALYS AC		BORGATA		CAESARS		HARRAH'S		RESORTS		SANDS		SHOWBOAT		TROPICANA		TRUMP MARINA		TRUMP PLAZA		TRUMPTAJ MAHAL		INDUSTRY	
	2004	2003	2004	2003	2004	2003	2004	2003	2004	2003	2004	2003	2004	2003	2004	2003	2004	2003	2004	2003	2004	2003	2004	2003	2004	2003
TABLE GAMES:																										
Blackjack	37	37	70	88	63	74	56	57	27	30	39	25	35	31	27	25	71	66	32	39	39	41	54	55	550	568
Craps	8	9	13	16	12	12	13	13	6	5	7	6	4	5	4	5	9	10	7	7	6	6	11	11	100	105
Roulette	8	10	24	24	17	13	13	15	8	8	8	8	6	8	6	6	14	13	7	6	9	9	14	13	134	133
Big Six	-	-	2	2	1	1	1	3	-	-	1	-	1	-	1	1	1	1	-	-	1	1	1	1	10	10
Baccarat	1	1	2	2	2	2	1	2	-	-	3	4	2	1	2	2	2	3	2	2	3	2	4	4	24	25
Minibaccarat	7	5	11	8	5	4	2	3	1	1	3	2	4	1	3	2	6	6	3	2	8	8	5	7	58	49
Sic Bo	-	-	1	1	-	1	1	1	-	-	-	-	-	-	-	-	1	1	-	-	1	1	1	1	5	6
Pai Gow Poker	4	4	10	8	5	4	3	4	1	1	1	1	2	1	2	3	6	6	3	3	5	5	7	7	49	47
Pai Gow	3	3	3	3	2	2	1	1	-	-	2	-	2	-	2	2	6	6	1	1	4	3	4	4	30	25
Poker	-	-	20	10	34	34	-	-	16	6	-	-	14	14	-	-	42	42	-	-	-	-	78	66	204	172
Caribbean Stud Poker	3	4	7	10	4	-	4	4	3	3	2	3	2	2	2	2	3	3	2	2	2	3	3	3	37	39
Let it Ride Poker	3	4	7	8	4	4	4	5	4	5	3	3	3	3	2	3	3	3	3	2	3	3	3	4	42	47
Spanish 21	-	-	10	10	4	4	6	6	1	1	2	2	2	2	1	2	2	2	3	2	3	2	5	6	39	39
Three Card Poker	9	7	15	13	12	8	8	9	9	7	6	5	6	5	6	5	12	7	7	7	5	5	9	9	104	87
Boston 5 Stud Poker	-	1	-	3	-	-	1	3	-	-	1	1	-	1	-	-	2	2	1	1	1	1	1	2	7	15
Double Cross Poker (a)	-	-	-	-	-	-	-	-	-	-	-	-	-	1	-	-	-	1	1	1	-	-	-	-	1	3
Four Card Poker (c)	3	-	7	-	4	-	4	-	2	-	1	-	-	-	1	-	-	-	4	-	-	-	3	-	29	-
Double Attack Blackjack (d)	-	-	-	-	-	-	1	-	-	-	-	-	-	-	-	-	-	-	-	-	1	-	2	-	4	-
Total Table Games	86	85	202	206	169	163	119	126	78	67	79	60	83	75	59	58	180	172	76	75	91	90	205	193	1,427	1,370
KENO WINDOWS	-	-	4	4	-	-	6	6	4	4	-	-	-	-	-	-	-	-	-	-	-	-	2	2	16	16
SLOT MACHINES:																										
\$.05 Slot Machines	451	466	1,286	1,275	1,021	892	631	794	783	816	594	393	482	519	831	907	1,034	1,039	662	637	656	705	934	998	9,365	9,441
\$.25 Slot Machines	906	939	2,795	3,214	1,331	1,619	1,421	1,593	1,642	2,081	1,179	1,302	1,038	1,052	2,098	2,200	1,799	1,929	1,213	1,188	1,388	1,590	2,164	2,417	18,974	21,124
\$.50 Slot Machines	146	156	444	506	208	216	245	285	254	300	195	240	133	150	166	198	318	350	86	197	218	189	325	345	2,738	3,132
\$1 Slot Machines	319	291	661	768	420	484	419	438	694	821	284	255	329	356	449	517	693	736	351	340	330	285	687	710	5,636	6,001
\$5 Slot Machines	91	91	157	166	100	107	110	113	107	114	93	84	69	76	65	109	123	131	72	73	72	73	136	142	1,195	1,279
\$25 Slot Machines	12	12	24	27	16	16	14	15	13	10	7	9	8	6	4	4	17	17	11	11	13	13	13	13	152	153
\$100 Slot Machines	12	12	12	13	12	10	18	16	9	5	7	7	4	5	4	4	12	12	6	6	6	6	13	9	115	105
Multi-Denominational (b)	-	-	-	-	217	169	113	-	30	-	420	-	68	-	154	-	-	-	16	-	26	-	5	-	1,049	169
Other Slot Machines	106	52	483	175	216	79	255	120	162	92	146	64	74	38	202	35	334	189	128	49	133	45	142	36	2,381	974
Total Slot Machines	2,043	2,019	5,862	6,144	3,541	3,592	3,226	3,374	3,694	4,239	2,925	2,354	2,205	2,202	3,973	3,974	4,330	4,403	2,545	2,501	2,842	2,906	4,419	4,670	41,605	42,378
Casino Square Footage	59,800	59,612	179,108	179,108	116,302	115,892	118,424	117,910	131,780	127,049	83,759	63,294	57,154	58,527	101,299	101,586	139,737	140,026	65,057	65,057	91,366	91,181	120,549	120,549	1,264,335	1,239,791
Simulcast Square Footage	-	-	46,232	46,232	7,951	9,112	4,312	7,342	-	-	15,134	11,807	20,933	19,424	14,109	14,109	8,380	8,380	14,601	14,601	-	-	38,537	36,846	170,189	167,853
Number of Hotel Rooms	804	804	1,745	1,745	2,000	2,002	1,140	1,140	1,630	1,630	879	479	620	637	1,309	1,309	2,125	1,625	728	728	904	904	1,250	1,250	15,134	14,253
Number of Parking Spaces	1,825	1,825	4,086	4,086	4,749	5,775	2,898	2,938	3,822	3,822	1,337	1,336	1,684	1,684	3,752	3,051	5,365	3,189	2,986	2,986	2,658	2,698	7,180	7,180	42,342	40,570
Property & Equipment																										
Gross (\$Millions)	\$ 570.3	\$ 555.3	\$ 1,288.3	\$ 1,265.8	\$ 1,041.0	\$ 1,021.6	\$ 922.1	\$ 903.4	\$ 836.4	\$ 795.6	\$ 292.4	\$ 212.7	\$ 217.0	\$ 209.4	\$ 670.7	\$ 666.8	\$ 1,078.9	\$ 947.4	\$ 590.1	\$ 581.9	\$ 679.1	\$ 665.3	\$ 1,159.2	\$ 1,140.8	\$ 9,345.5	\$ 8,966.0
Number of Employees	3,089	3,233	6,866	7,166	5,548	5,076	4,220	4,399	2,886	3,033	2,840	2,815	2,095	2,221	2,707	3,052	5,044	4,490	2,550	2,742	2,920	3,073	4,736	4,859	45,501	46,159

(a) Double Cross Poker commenced operations in July 2003.
 (b) Multi-Denominational Slot Machines approved for use in May 2004.
 (c) Four Card Poker commenced operations in May 2004.
 (d) Double Attack Blackjack commenced operations in January 2004.