

Honolua Store

KAPALUA RESORT
502 OFFICE ROAD
LAHAINA, HAWAII 96767

PHONE: 808.665.9105

Deli Menu

6am - 630pm

BREAKFAST

Steak & Eggs 9.99
6 oz New York Steak and two eggs, with choice of hashbrown, potatoes O'Brien or steamed rice

2 Eggs & 1 Breakfast Meat 6.99
Two eggs, with choice of hashbrown, potatoes O'Brien, or steamed rice. Choice of ham, pork link sausage, Portuguese sausage, bacon, spam, or corned beef hash

2 Eggs & 2 Breakfast Meats 8.99
Two eggs, with choice of hashbrown, potatoes O'Brien, or steamed rice. Choice of ham, pork link sausage, Portuguese sausage, bacon, spam, or corned beef hash

Hobo Loco Moco 5.99
Hamburger patty, two eggs, and steamed rice smothered in brown gravy

Hobo Breakfast 5.99
Two eggs and steamed riced. Choice of ham, pork link sausage, Portuguese sausage, bacon, or spam

Honolua Egg Benedict 7.99
English muffin with ham, egg, and Hollandaise Sauce. Served with hashbrown

Biscuits & Gravy w/ Eggs 7.99
Biscuits, homemade gravy and two eggs

Breakfast Burrito 8.99
Flour tortilla, eggs, sausage, tomato, onion, salsa, and cheese

Egg Breakfast Sandwich 8.49
Two eggs with ham, bacon, and Swiss cheese on sourdough bread. Choice of hashbrown, potatoes O'Brien, or steamed rice

Belgian Waffle 5.99
Fresh fruit and powdered sugar

Old Fashion Style Oatmeal 4.95
Oatmeal topped with brown sugar and milk

Buttermilk Pancakes
Served with fresh fruit and sprinkled powdered sugar
SHORT STACK **5.49** FULL STACK **6.49**

Banana Pancakes
Sprinkled with powdered sugar
SHORT STACK **6.49** FULL STACK **7.49**

Sweet Bread French Toast 6.99
Sprinkled with powdered sugar

HONOLUA OMELETTES

Omelettes come with choice of hashbrown, potatoes O'Brien, steamed rice, or toast (wheat or white)

Ham & Cheese Omelette 7.99

Avocado BLT Omelette 8.99

Veggie Omelette 7.99
Spinach, mushroom, zucchini, green and red bell pepper, tomatoes, and onion

Three Cheese Omelette 7.99
Cheddar, Mozzarella, and Provolone cheese

Shrimp Omelette 9.99
Shrimp, tomato, red bell pepper, onion, mushroom, and green onion

Meat Lovers Omelette 8.99
Bacon, Portuguese sausage, pork link sausage, and ham

Create Your Own Omelette 8.99

BREAKFAST SIDES

Rice **0.95** Fried Rice **2.89**

Hashbrown **2.69** Eggs (2) **2.99**

Potatoes O'Brien **2.69**

Bagel with Cream Cheese **2.75**

Breakfast Meats **2.99**

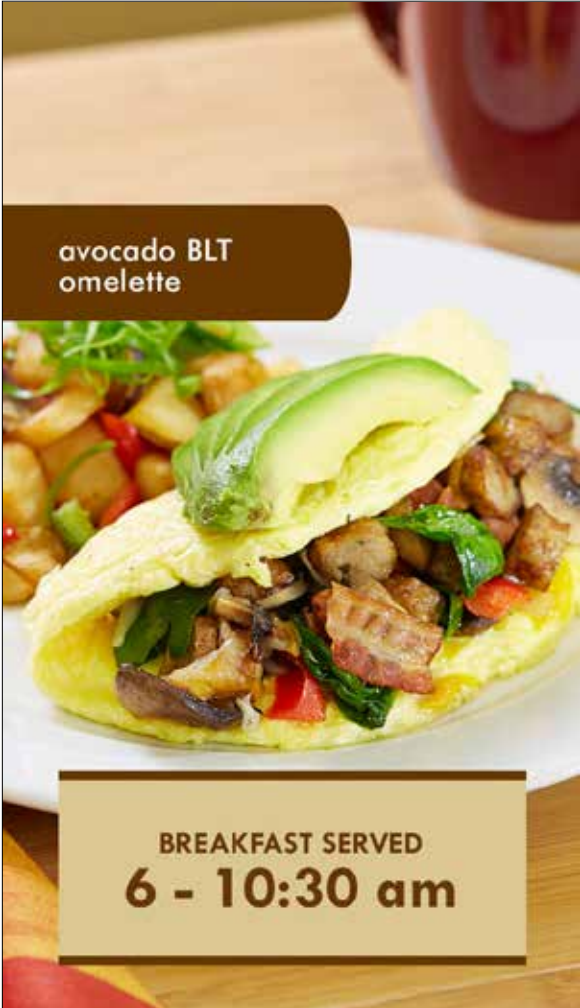
- Bacon
- Pork Link Sausage/Patty
- Portuguese Sausage
- Ham
- Spam
- Corned Beef Hash

NOTE:
Prices are subject to change.

UPDATED 12-12-14

Deli Menu

6am - 630pm



LOCAL FAVORITES

Mini Lunch
One entree and one scoop of rice

Asst. Prices

Plate Lunch
One entree, one scoop of rice, choice of macaroni, potato salad, or peas and corn

Asst. Prices

Combo Plate Lunch
Two entrees, one scoop of rice, choice of macaroni, potato salad, or peas and corn

Asst. Prices

Saimin
Saimin noodles with soup, topped with Kamaboko (fish cake), eggs, spam, and green onions

4.99

Beer Battered Fish & Chips
Battered deep fried fish and french fries

9.99

Homemade Chili Bowl w/ Rice
Homemade chili with beans, round onions, shredded Cheddar, and rice

5.99

Homemade Chili & Beans
Homemade chili with beans, round onions, and shredded Cheddar cheese

7.99

GOURMET HOT DOGS

The Chicago **5.99**
Yellow mustard, sweet relish, tomatoes, cubed red onions, serrano peppers, and kosher dill pickle spears

The Classic Sauerkraut **4.99**
Sauerkraut, yellow mustard, chopped onions, and kosher dill pickle spears

The Coney Island **6.99**
Shredded Cheddar cheese, homestyle chili, yellow mustard, chopped onions, and a kosher dill pickle

Create Your Own **7.59**

- Shredded Cheddar Cheese
- Bacon Bits
- Chopped Jalapeños
- Kosher Dill Pickle Spears
- Sliced Haas
- Mozzarella Cheese
- Yellow Mustard
- Chopped Onions
- Ketchup
- Avocado

also available:

SPECIAL REQUESTS, PARTY TRAYS, AND OTHER MENU SELECTIONS. ORDERS MUST BE PLACED 48 HOURS IN ADVANCE

NOTE:
Prices are subject to change.

Deli Menu

6am - 630pm

GOLDEN FRIED CHICKEN

3-Piece Fried Chicken Meal 8.99
Breast or thigh, leg and wing served with rice or mashed potatoes and choice of salad

16 Pieces 32.99
4 of each (4 breasts, 4 thighs, 4 legs, 4 wings)

8 Pieces 16.99
2 of each (2 breasts, 2 thighs, 2 legs, 2 wings)

4 Pieces 8.79
1 of each (1 breast, 1 thigh, 1 leg, 1 wing)

By the Piece

BREAST	2.99	THIGH	2.29
LEG	1.99	WING	1.69

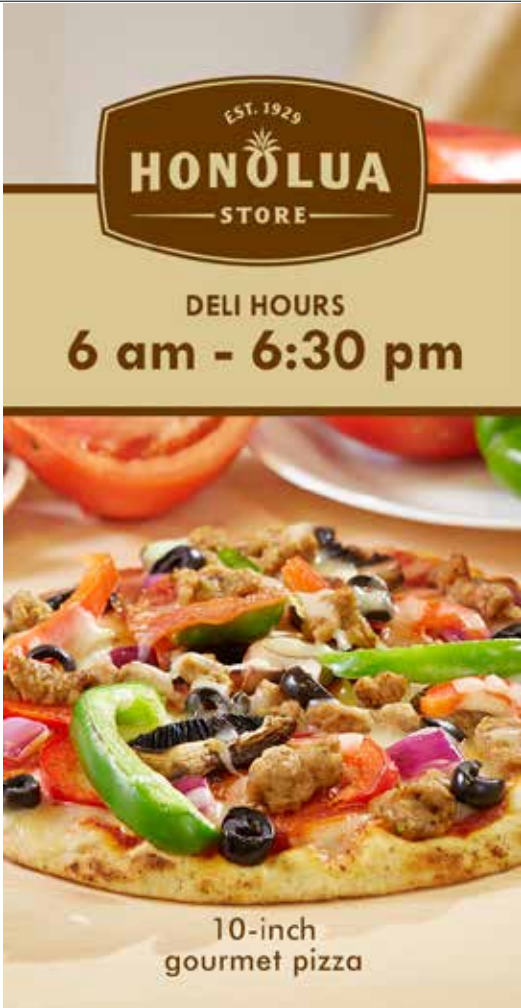
10" GOURMET PIZZA

Cheese **12.49** Pepperoni **13.49**

Hawaiian Pizza **14.49**
Maui Gold Pineapple and ham

Mediterranean Pizza **13.99**
Sun dried tomatoes, roasted pepper, eggplant, black olives, feta cheese, and pesto sauce

Meat Lovers Pizza **14.99**
Italian sausage, pepperoni, and ham



BURGERS

Burgers are served with a kosher dill pickle. Choice of seasoned curly fries, french fries, or fresh fruit

Famous Honolua Burger 9.99
100% all beef chuck steak burger, fresh Maui Gold pineapple slice, Cheddar cheese, bacon, tomatoes, round onions, and green leaf lettuce

Famous Honolua Teriyaki Burger 9.99
100% all beef chuck steak burger, Teriyaki sauce, tomatoes, Maui onions, and green leaf lettuce

Honolua Swiss Mushroom Burger 10.59
100% all beef chuck steak burger, Swiss cheese, sliced mushrooms, tomatoes, round onions, and green leaf lettuce

Garden Burger 8.99
Garden burger, green leaf lettuce, tomatoes, clover sprouts, and cheddar cheese

Grilled Veggie 8.99
Eggplant, red bell pepper, zucchini, green leaf lettuce, and Pesto Aioli Sauce served on Focaccia Flat Bread

Pastrami in Heaven Burger 11.59
Pastrami, 100% all beef chuck steak burger, Swiss cheese, onion, locally grown tomato, green leaf lettuce, and Dijon Horseradish

Honolua Cheeseburger Supreme 9.99

NOTE:
Prices are subject to change.

Deli Menu

6am - 630pm

TOASTED SANDWICHES

- Grilled Chicken & Herb Brie **10.99**
- Peppered Turkey BLT • Chicken Fajita
- Cubano • Mr. Reuben
- Roast Beef & Brie • Honey Ham & Swiss

APPETIZERS & SIDES

- Fries (REGULAR OR CURLY) **2.99**
- Onion Rings **3.99**
- Corn Dog (CHICKEN) **1.99**
- Pizza Stick **1.99**
- Grilled Ham & Cheese Sandwich **6.29**
- Grilled Cheese Sandwich **4.99**
- Chicken Tenders w/ Fries **7.99**
- Plain Hot Dog **4.39**
- Eggroll w/ Thai Sweet Chili Sauce **2.49**

SANDWICHES

Items are served with seasoned curly fries or french fries, and a kosher dill pickle

- Hot Pastrami Sandwich **12.99**
Pastrami, Swiss cheese, cole slaw, and Ancho Chipotle
- BBQ Pulled Pork Sandwich **9.49**
Slow-roasted pork, cole slaw, and BBQ sauce served on a Hoagie Roll
- Triple Decker BLT Sandwich **9.99**
Bacon, green leaf lettuce, tomatoes, avocado, on white or wheat bread
- French Dip Sandwich **9.99**
Roast beef, Provolone cheese, and Au Jus sauce served on a Hoagie Roll
- Philly Cheesesteak Sandwich **9.99**
Roast beef, red bell pepper, round onions, provolone cheese, served on a Hoagie Roll
- Reuben Sandwich **10.99**
Thinly sliced corned beef, Swiss cheese, sauerkraut, and Thousand Island Dressing served on Rye bread
- Teriyaki Beef Sandwich **8.99**
Teriyaki beef slice, green leaf lettuce, and tomatoes served on a bakery fresh bun



NOTE:
Prices are subject to change.

Deli Menu

6am - 630pm

Tuna Melt Sandwich 9.99
Tuna, mayonnaise, and Cheddar cheese served on foccacia flat bread

Toasted Turkey/Ham/Cheese 8.99
Turkey breast, ham, and cheese served on French bread

Grilled Mahimahi Sandwich 11.49
Mahimahi fillet, green leaf lettuce, tomatoes, pesto sauce, and mayonnaise served on a bakery fresh bun

Grilled Mahimahi Wrap 9.49
Mahimahi fillet, Romaine lettuce, carrots, red onions, and Buttermilk Ranch dressing served on a tortilla wrap

thirsty?

CHECK OUT OUR COFFEE BAR
located to left of the deli

We serve hot and iced coffees to help you kick start your day, and delicious smoothies to satisfy your sweet tooth!

Exclusive ground or whole bean Honolua coffees are also available for purchase in the store

CUSTOM SANDWICHES

NO CHEESE **8.99** WITH CHEESE **9.99**

DOUBLE STUFFED **add 1.80**

STEP

- 1 Choose your BREAD**
 - Whole Wheat
 - Sour Dough
 - Croissant
 - White
 - Hoagie
 - Asst. Tortilla Wraps
- 2 Choose your SPREAD**
 - Dijon Mustard
 - Honey Mustard
 - Mayonnaise
 - Regular Mustard
 - Chipotle
- 3 Choose your MEAT**
 - Turkey Breast
 - Roast Beef
 - Beef Pastrami
 - Corned Beef
 - Tuna Salad
- 4 Choose your CHEESE**
 - Swiss
 - Provolone
 - Pepper Jack
 - American
 - Cheddar

SALADS

Create Your Own
SMALL **8.99** LARGE **9.99**

STEP

- 1 Choose your LETTUCE**
 - Baby Spinach
 - Romaine
 - 2 Choose your DRESSING**
 - Golden Italian
 - Oriental
 - Caesar
 - Balsamic Vinegar
 - Buttermilk Ranch
 - Oil & Vinegar
 - Thousand Island
 - 3 Choose 1 PROTEIN**
 - Grilled Chicken
 - Tofu
 - Tuna Salad
 - Imitation Crab
 - Baked Ham
 - Roasted Turkey
 - Bay Shrimp
 - 4 Choose 3 TOPPINGS**
 - Carrots
 - Peas
 - Onions
 - Bell Peppers
 - Cheddar Cheese
 - Tomatoes
 - Dried Cranberries
 - Mushrooms
 - Boiled Eggs
 - Artichoke Hearts
 - Mozzarella Cheese
 - Feta Cheese
 - Olives
- Additional Toppings - 1.50 each**

NOTE:
Prices are subject to change.

Honolua Store

KAPALUA RESORT
502 OFFICE ROAD
LAHAINA, HAWAII 96767

PHONE: 808.665.9105

Coffee Bar Menu

6am - 3pm

ICED COFFEE

ICED OR ICE BLENDED

	REGULAR	LARGE
Iced Coffee	2.00	2.75
Iced Latte	3.50	4.85
Blended Iced Latte	3.75	5.00
Iced / Blended Americano	3.50	4.50
Iced Brown Sugar Latte	3.50	4.85
Blended Brown Sugar Latte	3.75	5.00
Iced / Blended Iced Mayan Mocha	4.85	5.95
Iced / Blended Mocha	4.85	5.95
Iced / Blended White Chocolate	4.85	5.95
Iced / Blended Caramel Latte	4.85	5.95

(COFFEE BAR HOURS)
6 am - 3 pm

ESPRESSO

	REGULAR	LARGE
Espresso	SINGLE 2.00	DOUBLE 2.50
Café Latte	3.50	4.50
Café Au Lait Espresso	3.00	3.85
Espresso, house coffee, and steamed milk		
Brown Sugar Latte	4.00	5.50
Mayan Mocha	4.85	5.95
Espresso, steamed milk, chocolate, & spice		
Café Mocha	4.85	5.95
White Chocolate Mocha	4.85	5.95
Cappuccino	3.50	4.50
Americano	3.00	3.50
Macchiato	3.50	4.85
Red Eye Coffee	2.50	3.75
Espresso and house coffee		

(EXTRA) Espresso Monin Flavor **1.00**
Almond Milk or Soy Milk **75¢**

NOTE:
Prices are subject to change.

UPDATED 12-31-14

Coffee Bar Menu

6am - 3pm

TEA

HOT TEA

	REGULAR	LARGE
Chai Latte	4.85	5.95
Organic Mighty Leaf Tea	2.00	
• BREAKFAST	• MINT MÈLANGE	• AFRICAN NECTAR
• HOJICHA	• CHAMOMILE CITRUS	• ORANGE DULCE
• EARL GRAY		

ICED TEA

	REGULAR	LARGE
Black Tea	3.00	4.00
Green Tea	3.00	4.00
Chai	4.00	5.50

SMOOTHIES

Strawberry Banana	5.99
Piña Colada	5.99
Honolua Mudslide	5.99
Orange Cream Delight	5.99

HOT BEVERAGES

	REGULAR	LARGE
Coffee REGULAR OR DECAF Exclusive Honolua Store House Blend	2.00	2.75
Café Au Lait House coffee with steamed milk	2.50	3.25
Hot Chocolate	3.50	4.50

(EXTRA BOOST) Add an Espresso Shot **1.00**



We use Ghirardelli
in all our chocolate beverages



We feature
Organic Mighty Leaf Tea

(FEATURED ITEMS)

Honolua Coconut Frappe	5.99
Honolua Acai Bowl	7.49

NOTE:
Prices are subject to change.

UPDATED 12-31-14