

A large circular logo with a black background and a white border. At the top is a white line-art icon of a steam locomotive. At the bottom is a white line-art icon of a bicycle. In the center, the word 'MOREART' is written in a colorful, multi-colored font. The letters are: M (blue), O (purple), R (pink), E (red), A (yellow), R (green), T (teal). On either side of the text are small white icons of a person walking. The entire logo is divided into four quadrants by two white dashed lines that intersect at the center.

**SUNDAY 23 OCTOBER
TO SUNDAY 18 DECEMBER**



Moreland City Council

bemoir

RMIT
UNIVERSITY
LINK

VicTrack



Moreland City Council

M
METRO

Special thanks to our partners at VicTrack, Metro Trains, RMIT Link Arts and Culture Brunswick, the Squeaky Wheel, Art Afficianado's, PTV and the Fawkner Cemetery, for helping make this year's program a reality.

Scan to Discover MoreArt



No Bemoir app yet? Get it quick from



www.bemoir.com

This year MoreArt has teamed up with Bemoir to help you get closer to the artists behind the work. Download the Bemoir App today and immerse your creative self in MoreArt 2016.

Moreart is a temporary art-in-public-spaces event that continues to surprise and engage the community every year.

A vibrant cluster of artworks and artists appear in unusual and unexpected public sites along the Upfield and Sydney Road rail, tram and bike precinct.

MoreArt has built a strong identity associated with both unpredictable creativity and innovation, and celebrates the ability of artists to transform urban environments into vehicles for contemplation, celebration and imagination.

MoreArt fosters a strong commitment to public transport, cycling, urban renewal, community cohesion and creative spaces in Moreland.

The 2016 program starts on Sunday 23 October and runs until Sunday 18 December. 2016 sees 16 projects across the program.

**moreland.vic.gov/moreart
#moreart**

**PARTICIPATION,
PEDALLING,
PERAMBULATION,
PUBLIC TRANSPORT**

TINNING ST

SILOS 4

LightenUpfield 4

ALBION ST

ANSTEY



HOPE ST

1

VICTORIA ST

BRUNSWICK



3

2

Wendy Busch
State to State

ALBERT ST

Artland

1

Siteworks
Blak Dot Gllaery

DAWSON ST



RMIT

2

4

UNION ST

JEWEL



1

4

Laresa Kosloff
Andy Thomson
Announcements

UPFIELD BIKE PATH

2

SYDNEY RD

Mobile Projects
See program for details

**The Pharmacy and
Suburban Therapy**

Lost on the Tram
Number 19 Tram

**LightenUpfield
/Projectorbike**



Kenny Pittock
Who can travel on
a concession Myki?

GOWRIE



BOX FORREST RD

Marcia Ferguson
Box Forest

FAWKNER



BOUNDARY RD

MERLYNSTON



BAKERS RD

BATMAN



GAFFNEY ST

COBURG



Chris Humphries
The Translucent
Landscape

MUNRO ST

Jessie Stanley
Marking Time

MORELAND



MORELAND RD

MAP
UPFIELD
CITY

ROTATE TO USE

Precinct wide projects

- 1** *Trainlines*
Marcia Ferguson
- 2** Congenality
Squishface Studios
- 3** A Matter of Time
Claudia Gleave
- 4** Galleries
Counihan Gallery
Tinning Street
Brunswick Arts
Neon Parc
Blak Dot Gallery

Oxygen Commission
4/8 Gaffney St

Bonnie Gordon
Hopscotch

DUNNES LN

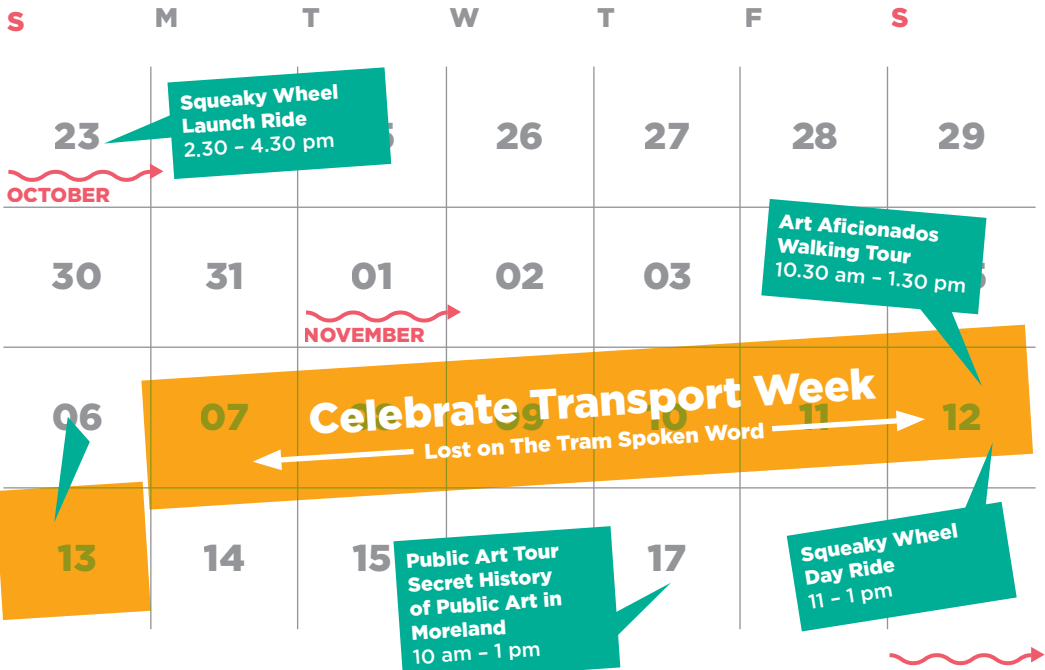
BELL ST

2

2

1

2



BOOK NOW!

S	M	T	W	T	F	S
20	21	MoreArt, Lighten Upfield and Intercambio at Jewell Station 7 - 9 pm		24	Squeaky Wheel Night Ride 7 - 9 pm	
27	28	29	30	01	02	03
				DECEMBER		
04	05	LightenUpfield at Anstey 7 - 9 pm		08	09	10
11	12	Squeaky Wheel Night Ride 7 - 9 pm		15	Lighten Upfield at the Silo 7 - 9 pm	
					16	17

Bike Tours
thesqueakywheel.com.au

Walking Tour
artaficionadotours.com

Public Art Tour
dmitchell@moreland.vic.gov.au

Claudia Gleave

A Matter of Time

2016

Inkjet print on PVC,
eyelets, rope

Brunswick Station to Anstey Station



ONE
TIME
DEFER

Claudia Gleave's work explores our relationships with time, reality and self.

Reflecting on our experience of the world, Gleave pushes the boundaries of the mind in order to reveal beyond our general level of consciousness. She is drawn to the destructive and absurd aspects of humanity, which can be seen through the poetic and emotive nature of her works.

Bonnie Gordon

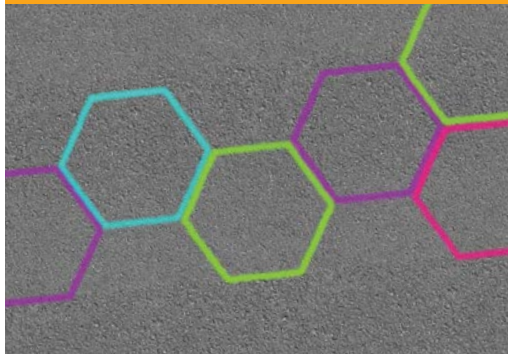
Hopscotch 2016

Various Materials

Various sites around Coburg,
including Dunnes Lane

Hopscotch is a series of pavement games designed to playfully engage spaces around Coburg.

Developed in response to this year's MoreArt theme of 'passage', the work reminds us to slow down and enjoy life, while reflecting on broader themes of childhood fun and innocence through play. Hopscotch is a game with a long history and many variations are played around the world; in this way it provides a simple catalyst for thought about cultural differences and similarities.



Referencing the colours and cultures of Coburg, Hopscotch intends to engage with place in a simple, playful and meaningful way.

Sunday 23 October, Coburg Library

Saturday 12 November, Coburg Leisure Centre

Tuesday 22 November, Dunnes Lane Coburg

Tuesday 29 November, Bridges Reserve Coburg

Tuesday 6 December, Coburg Station

Luci Lee and the Ok Collective

Suburban Therapy and The Pharmacy 2015 - 2016

Paper, cardboard, mobile cart

Jewell Station and various locations
throughout Moreland

Suburban Therapy and *The Pharmacy* is a collaboration between two MoreArt award-winning artists from the 2015 show. The project is a playfully interactive, creative therapy opportunity for the people of Moreland.

Have a chat with a real artist, get your portrait rendered and receive your daily medication from Your Health Solutions product range



Therapy available on these days:

Sunday Oct 23
2.30 - 4.30 pm Coburg Mall

Sunday 5 November
11 - 1 pm Coburg Mall

Saturday 12 November
11 - 1 pm Moreland Station

Thursday 24 November
7 - 9 pm Jewell Station

Saturday 19 December
11 - 1 pm Coburg Mall

Chris Humphries

The Translucent Landscape

2016

Perspex, permanent marker and led lights.

Coburg Uniting Church
21 Victoria St, Coburg

Humphries work draws on the idea of landscape and how people interact with it. He's particularly interested in the promotion and recognition of green spaces and land within Moreland as well as the greater Melbourne.

The Translucent Landscape holds particular emphasis on indigenous flora along the Merri Creek as well as themes of nostalgia for place and land.



Artist on Site

Sunday 6 November

Saturday 12 November

Sunday 20 November

Saturday 3 December

Marcia Ferguson

Train Lines

2016

Stencil, paint

Various architectural sites
visible from the Upfield line

Train Lines is a writing and street art project that reflects on the original purpose of the Upfield train line – as mortuary transport between the City Morgue and Fawkner Cemetery. Researched through interviews with Moreland residents, *Train Lines* is a poem that reflects on the passage from city to cemetery, the passage of life to death, and the journey to 'the final stop'. Installed on walls along the Upfield Line, and visible to commuters from a moving train, lines of a single poem form a narrative that is revealed over time and distance.



The artist would like to thank Letterbox, Polly Hollyoak, Chris Bold, Miranda Prestage, Tom Cross, Evan Watts, private property owners who accepted TRAIN LINES as part of their 'wall furniture', Recycled Timber Specialists and residents of Moreland for their astonishing heartfelt interviews.

Wendy Busch

State to State

2016

Enamel on aluminum sheet metal

17 panels, 118 x 118cm

Woolworths Brunswick,
visible from the Upfield bike path.



State to State comprises 17 intensely colored abstract paintings on aluminum sheet metal. Inspired by diagrams of moving light rays, the work aims to explore the subjective nature of perception. The glossy enamel paint and exposed aluminum create a shiny, mirror-like surface which creates a powerful element of inclusion for the viewer and the surrounding environment. This prompts a transition between paint and reflection, alluding to movement between physical and psychological spaces.

www.wendybusch.net

Jessie Stanley

Marking Time

2016

Artist in Residence, Moreland Station

This research residency ventures through time and space via Moreland Station's Waiting Room: by tracing the origins of the bricks that built the station - the stories embedded within them - back to their elemental beginnings in Brunswick's clay holes.

Get involved and follow the project at
markingtime.com.au

or on social media at
facebook.com/Marking_Time_Brunswick
or Instagram/_markingtime_

Bookings and open hours: markingtime.com.au



11 am - 1 pm, Saturday 29 October

2.30 - 4 pm, Wednesday 2 November

8 - 10 am, Tuesday 8 November

11 am - 1 pm, Saturday 12 November

3 - 5 pm Sunday 20 November

3.30 - 5 pm, Thursday 24 November

11 am - 1 pm, Saturday 26 November

11 am - 1 pm, Saturday 10 December

Kenny Pittock

Who can travel on a concession Myki? 2016

2016

Brochure

Drawings of people eating on the train
Ink, paper (updated weekly at Gowrie Station)



Pittock's work will be featured at the old kiosk in the Gowrie Station waiting room. A collection of 24 drawings will be displayed over two weeks, featuring people eating on trains. The evocative works will be updated weekly and allow art to touch those who touch on their myki.

An informative brochure will also be available at the station dealing with hard-hitting questions like "am I eligible to travel on a concession card if I'm wearing my old Year 12 hoodie?" Satirical and suggestive, it's a must see!

Marcia Ferguson

Box Forest

2016

wood, earth, plants, steel rod

Fawkner Cemetery

Box Forest challenges the colonial legacy of John Pascoe Fawkner, and its role in defining Moreland's landscape. Fawkner dreamt of building Box Forest, his 'ideal village' on land overlapping Fawkner Memorial Park and Crematorium. Fawkner stipulated that prospective builders "destroy and remove all the native indigenous trees, wood, scrub and underwood whatsoever", replacing them with fruit trees and hedgerows, available for purchase from his private nursery. *Box Forest* consists of nine planter boxes lying side by side, filled with flourishing indigenous plants and grasses, 'putting back' what was removed.



The artist would like to thank Jim Stenson of Independent Scenery, Fawkner Memorial Park and The Greater Metropolitan Cemeteries Trust.

Laresa Kosloff and Andy Thomson

Announcements 2016

Voice artist: Soula Alexander, Sound
Upfield Line and Brunswick Library

Laresa Kosloff and Andy Thomson have produced a series of announcements that will be broadcast at railway stations along the Upfield Line and in the lobby of the Brunswick Library.

These announcements guide the listener into thinking about the world and themselves differently, by referring to time and space, cultural etiquette and psychology. The professional tone and public context of the announcements lends them an odd authority, much like commercial radio or political advertising.

23 - 29 October: Jewell Station

31 October - 5 November - Brunswick Station

6 - 12 November - Anstey Station

13 - 19 November - Moreland Station

20 - 26 November - Batman Station

27 November - 3 December - Merlynston Station

4 - 11 December - Fawkner Station

The artists are interested in the character of spoken announcements and how familiar forms of delivery might be creatively disrupted through a more lateral and surprising approach.

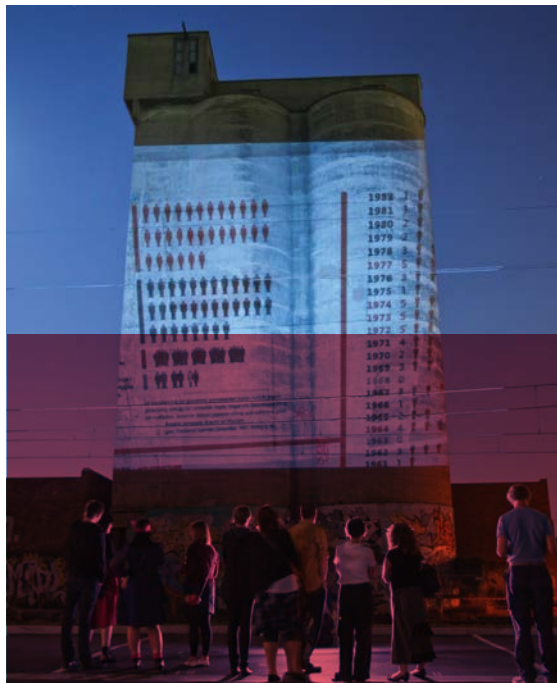
Melbourne Spoken Word celebrates the diverse and untapped power of spoken word poetry by show-casing pop up poets on the trams around Moreland, experienced only in that moment before you leave the metaphors sitting on the tram for someone else to find. Melbourne Spoken Word's goal is for spoken word, a powerful, relatively unknown art form, to reach wider audiences, inspiring to speak out and express themselves in new and moving ways.

Melbourne Spoken Word

Lost on the Tram 2016

Spoken performances
on the Number 19 Tram

7 - 13 November



Join us in a community-driven celebration of our bike and rail precinct through this original and creative project. LightenUpfield was born out of an event that became the catalyst for community to make a positive change, reclaim their precinct and help make the bike path a safer place.

Come along and light up various sites along the Upfield bike path, presented by your well-lit hosts Projector Bike. Featuring short films about our vibrant community made by the local filmmakers at Light Works Studios.

LightenUpfield is the first of what is destined to be an annual temporary light activation event on the Upfield corridor.

Thanks to
Back2Bikes
www.back2bikes.com.au
BCBmultisport
www.bcbmultisport.com.au

LightenUpfield

Temporary Lighting
and Projection Project

7 - 9 pm, Thursday 24 November, Jewell Station

7 - 9 pm, Thursday 1 December, Upfield Line

7 - 9 pm, Thursday 8 December,
Anstey Station (The Commons Community)

7 - 9 pm, Thursday 15 December,
Tinning Street Silos





Examining the character of rail infrastructure and the experience of the journey to explore and understand expanded sites for social engagement, dialogue and learning in an intercultural context. Working with the Havana Biennial in Cuba, the project involves a series of active art projects in Australia and Cuba based on or around the Hershey Train, Havana and the Upfield Railway Line, Melbourne. *Intercambio* aims to facilitate a conversation between communities in Havana and Melbourne to explore the challenge not only of geographical distance but also language, culture, social system and urban planning differences.

Intercambio

A Conversation Between Two Trains

Cuban Artists in Residence
Diana Fonseca and Adrianna Arronte
Jewell Station

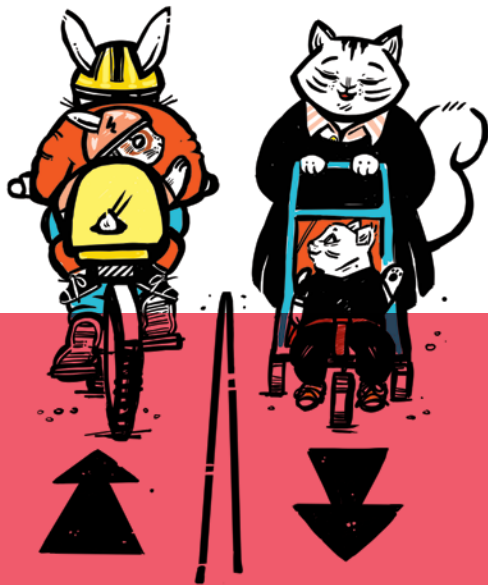
Special Event

6 - 9 pm, Thursday 24 November

A train provides not only physical transport but in this project it also becomes a site for a series of interchange points for both communities to build relationships from afar, drawing on their separate and shared experiences. Researchers: Dr Geoff Hogg, Damian Smith, Fiona Hillary, Riza Manalo, Ping Yan (Amy), Molly Braddon.

See moreland.vic.gov.au/moreart
for project updates and visiting times.

A whimsical and playful look at the colourful characters who use the Upfield Bike Path, promoting congeniality between path users through art and humour.



Comics on Congeniality on Concrete

Squishface Studios

Ben Hutchings, Jess Parker, Sarah Howell,
Rebecca Clements

Vinyl decal prints from
Brunswick to Fawkner

Exhibition

Friday 11 November – Sunday 11 December

Launch

5.30 – 7.30 pm, Friday 11 November
Building 514 Forecourt, RMIT Brunswick Campus
25 Dawson Street, Brunswick

Live music, free refreshments and the
announcement of artist awards.

www.rmit.edu.au/students/artland

facebook.com/Linkarts

instagram.com/rmit_link_arts

Artland

RMIT Brunswick Campus
visible from the Upfield Rail Line

Artland Billboard
Corner of Dawson St. and Upfield Rail Line

Artland is presented by
RMIT Link Arts and Culture



Responding to this year's theme, 'Passage', a winning design by young artist Nina Lord, (year 8) from Coburg High School has been selected to be presented on the Oxygen Youths Space Wall.

Oxygen Wall Art Commission

From late November
4 - 8 Gaffney Street,
Coburg North
(next to Coburg Lake)



Counihan Gallery In Brunswick

233 Sydney Road
Brunswick

Indisposed Cassandra Tyler Exhibition

Friday 7 October
to Sunday 30 October

Moreland Summer Show: Factivism

Friday 11 November
to Saturday 10 December

[moreland.vic.gov.au/
counihan-gallery](http://moreland.vic.gov.au/counihan-gallery)

Tinning Street Gallery

Lot 5/29 Tinning Street
Brunswick

Rosie Did It & Tegan Iversen Party Time

3 November to 13 November

Shaun Tan Every Place Is The Same Place

17 November to 20 November

Carla Fletcher Butterflies Of Metatron

1 December to 18 December

tinningstreetpresents.com

Brunswick Arts

15A Union St
Brunswick

Hallozeen Twennysistene

24 October to 13 November

Graphic Intention

29 November to 21 December

brunswickarts.com.au

Neon Parc Gallery

15 Tinning Street
Brunswick

Mike Kelley

28 October to 16 December

Blak Dot Gallery

33 Saxon Street
Brunswick

PRECINCT GALLERY PROGRAM

neonparc.com.au

blakdot.com.au

**Investing in Art
at Counihan**

233 Sydney Road,
Brunswick

6 – 8 pm,
Tuesday
15 November

**The Truth about
Writing with
Catherine Deveny**

Mechanics
Institute Studio,
270 Sydney Road,
Brunswick

6 – 8 pm,
Tuesday
22 November

**Intercambio
A Conversation
Between Two Trains**

Jewell Station
Brunswick

6 – 9 pm,
Thursday
24 November

**Driving Art:
Networking Event**

Workroom 2,
Siteworks,
33 Saxon Street,
Brunswick

2 – 4.30 pm,
Saturday
3 December

MAKING IT IN MORELAND

**Participate in a series of free discussions
and workshops addressing key themes
and questions for artists, makers and arts
professionals in today's creative climate.**

To view the full event guide
and to enrol (bookings are essential), visit
moreland.vic.gov.au/making-it-in-moreland
or phone **9384 9239**.

Your Health in the Music Industry

Wick Studios,
23-25 Leslie Street,
Brunswick

6.30 pm – 8 pm
Tuesday
29 November

The Art of Radical Listening

Coburg Courthouse
1A Main Street,
Coburg

1.30 pm – 4.30 pm,
Monday
28 November

Moreland Language Link

廣東話	9280 1910	हिंदी	9280 1918
Italiano	9280 1911	普通话	9280 0750
Ελληνικά	9280 1912	ਪੰਜਾਬੀ	9280 0751
عربي	9280 1913		
Türkçe	9280 1914	All other languages	
Tiếng Việt	9280 1915	9280 1919	



**ALL
ABOARD**