

Cisco Connected Gaming

The security, reliability, and operational ease to power the connected floor of the future

Overview

The introduction of Ethernet and the Internet Protocol (IP) to the gaming floor is a transformational technology filled with benefits for both players and operators. New Cisco Connected Gaming floors will allow the right game, to be delivered at the right time to the right player with the appropriate denomination securely and reliably. IP technology, riding a Cisco powered network, will enable operational efficiencies such as inventory polling, centralized management of games, software, marketing, and hold percentages.

This new power and functionality will travel over a new infrastructure of cabling and hardware. The responsibility given to this new infrastructure is formidable as the player experience, property revenue streams, and property reputation depend on its ability to support today's and future gaming applications.

Cisco has vast experience in enabling industries to harness the power of Internet Protocol. As a clear market leader in establishing the network as a platform, we stand ready to partner with Gaming Properties to enable them to transform the player experience with rich media and dynamic content in a secure, reliable fashion.

Security

802.1x Supplicant prevents undesired hubs and switches from connecting to the casino floor or anywhere on the network. There are live network connections in public areas with thousands of people; it is vital that only valid devices are connected.

VRF and Virtualized Networks enable a single physical switch to be divided into separate, virtual networks for enhanced security and usability. Digital signs, end caps, and gaming devices can be on different virtual networks secured from one another.

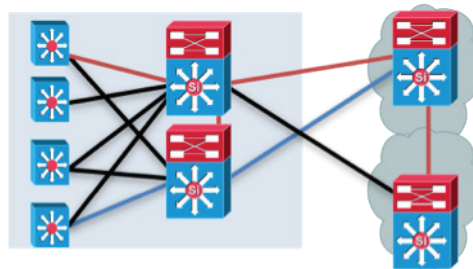
Catalyst Integrated Security Features include Port Security, DHCP Snooping, Dynamic ARP Inspection, and IP Source Guard. This suite of tools prevents attacks on the slot floor infrastructure, prevents impersonators from unauthorized access, and prevents the eavesdropping of communications and transactions between the gaming device and the servers.

Reliability

VSS, FlexLink, and Routed Access are optional technologies to ensure that in the case of link failure, the slot bank will suffer little to no loss of communication.

In-Service-System-Upgrades and Modular IOS enable the upgrading and patching of key parts of the slot infrastructure without disruption.

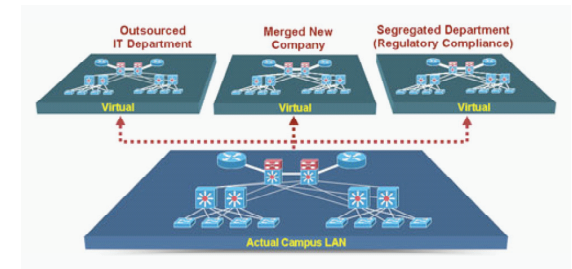
IP-SLA is a technology that allows the constant measuring of network performance you can centrally monitor the health of the slot infrastructure to assure the best and most stable performance.



Operational Efficiencies

Remote Cluster Management allows the automated plug and play deployment of slot bank switches and reduces operational expenses and complexities. It removes IT from routine maintenance changes to the slot floor.

Auto Smart Ports eases the management of a switch by utilizing automatic configuration by device type. The network switch can detect whether a gaming device, end cap, digital sign, or other is connected and configure the proper security and quality controls.



EnergyWise is a new technology for power-based management and reporting. It measures power of all connected network devices and enables centralized reporting and policy control.

DHCP Auto Install and Auto Image simplifies the deployment of a large number of switches by allowing the automatic downloading of operating systems and configurations.

Configuration Replace and Rollback enables the replacement of the current configuration of a switch with a previous one without restarting it. This feature assures that configuration mistakes have minimal impact to the slot floor.

Wireless LAN

WPA2 is a suite of security technologies that ensures the integrity and security of communications over the air. Safely extend digital signage, telephony, kiosks, and customer service to all corners of the property.

Location Based Services enables the property to keep track of RFID assets and wireless clients, determining their location within just meters.

802.11u is a new protocol allowing wireless clients such as smart phones to be a part of a guest network without any action on the part of the guest. Additionally, properties can directly promote services or products to the wireless device to enhance guest interaction.

Wireless Mesh

Extend High Speed Coverage to parking lots, outdoor areas, and golf courses. This extends the reach of applications such as physical surveillance, advertising, and video.

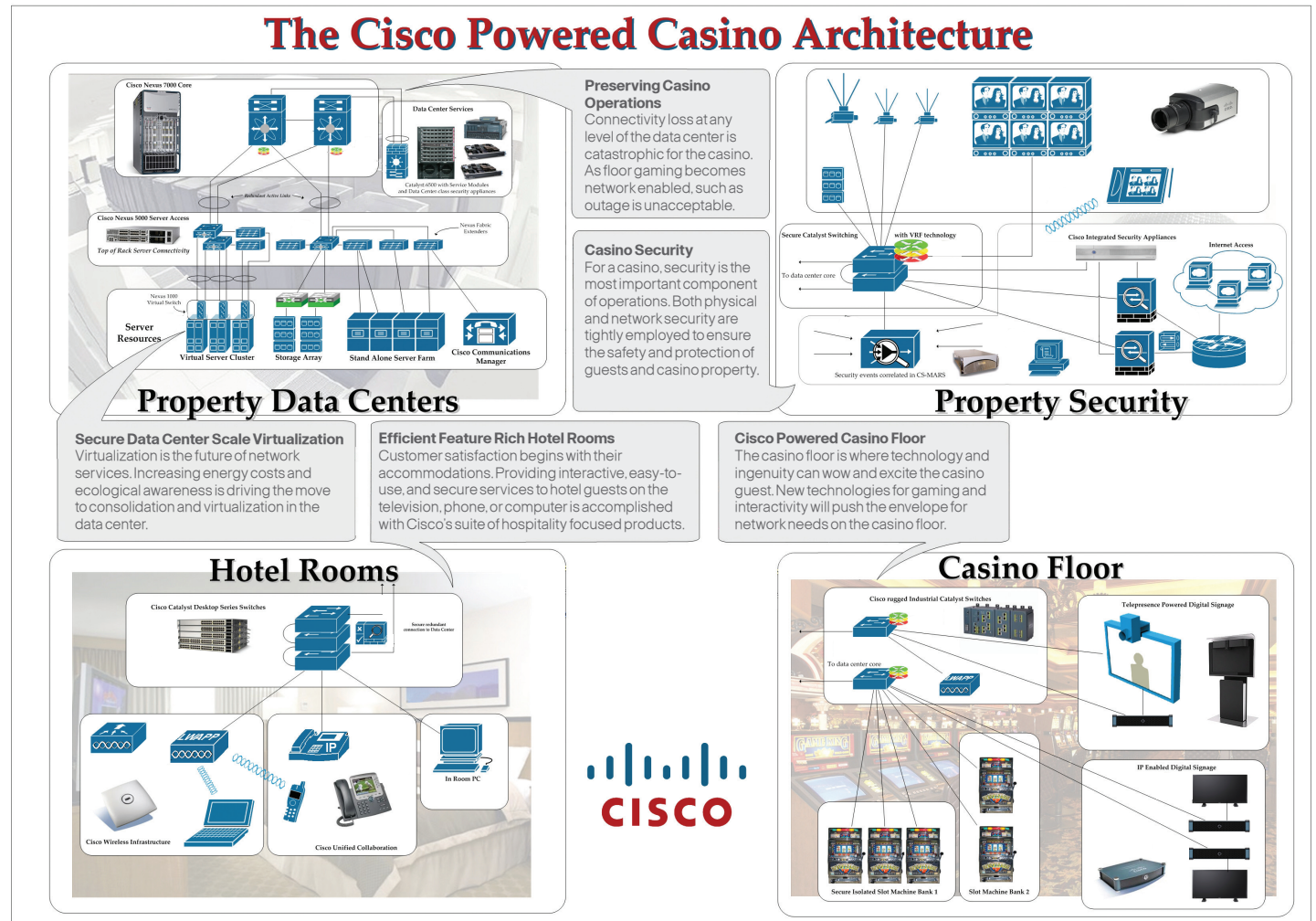
Data Security

Intrusion Detection and Prevention Systems constantly scan the slot network for malicious or out-of-the-ordinary data that could be a threat to the integrity of the games or the financial transactions traversing it.

Video Surveillance

Server-based software for viewing live and archived video that allows the customer to determine levels of authority for viewing cameras, and that can control movable cameras.

Video from thousands of cameras can be received, stored, managed and distributed.



Video encoders and decoders also connect analog cameras, monitors and keyboards, which may be standalone or chassis-based, and single or multi port.

Video storage systems provide multi terabyte capacity which can be supplemented by Direct Attached Storage, Network Attached Storage, and Storage Area Networks.

IP cameras combine high resolution and efficient bandwidth utilization with embedded networking capabilities and can be wired and wireless.