

YOUR PATHWAY TO ESSEX

Undergraduate and postgraduate pathways
Pre-sessional and English language programmes

International Academy



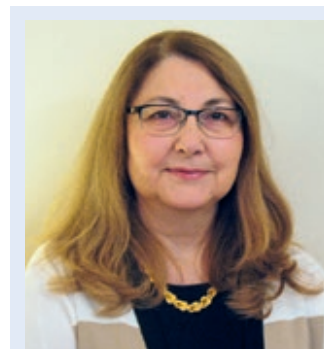
The University of Essex is one of the UK's leading academic institutions and has an international reputation for high-quality research and teaching. Our students are at the centre of everything we do and we strive to provide the resources, facilities and opportunities to empower them to succeed.

Our International Academy offers pathway programmes at undergraduate and postgraduate level, as well as pre-sessional and English language programmes. All our courses are managed, administered and taught by University of Essex staff. We provide programmes which have been developed for students who come from various countries, have a range of qualifications, or have not met the entry requirements for a particular degree. We develop your subject knowledge, English language and employability skills in a friendly environment through excellent teaching and administrative support.

Our educators are some of the best in our University, winning awards for being outstanding teachers and bringing new ideas into the classroom. Many of our teachers have PhDs in their subject areas and will ensure you are learning the most up-to-date information from the beginning of your university study.

Be a member

We are ranked top ten for student satisfaction (English mainstream universities, NSS 2016), so we are confident that you will enjoy your time with us. We maintain our commitment to quality teaching and to providing a supportive and enriching learning environment. You are a full member of the University community as soon as you arrive, and you benefit from the same facilities as all other University of Essex students including our accommodation, library, support services, and employability and careers centre. We also have many on-campus sports facilities and a great gym, together with over 150 clubs and societies to make your student experience interesting and rewarding.



“ We are dedicated to providing the best educational experience for you, both inside and outside of the classroom. Our focused classes and dedicated teaching will provide you with the skills and knowledge that would enable you to succeed on your course. Outside of the classroom, we'll enrich your student experience by offering trips and social activities to help you integrate with the British culture. As a member of the International Academy you'll be part of our unique global community where you share experiences with your peers from across the world.”

Dr Nilufer Demirkan-Jones
Head of Department

Your university life

Where to find us

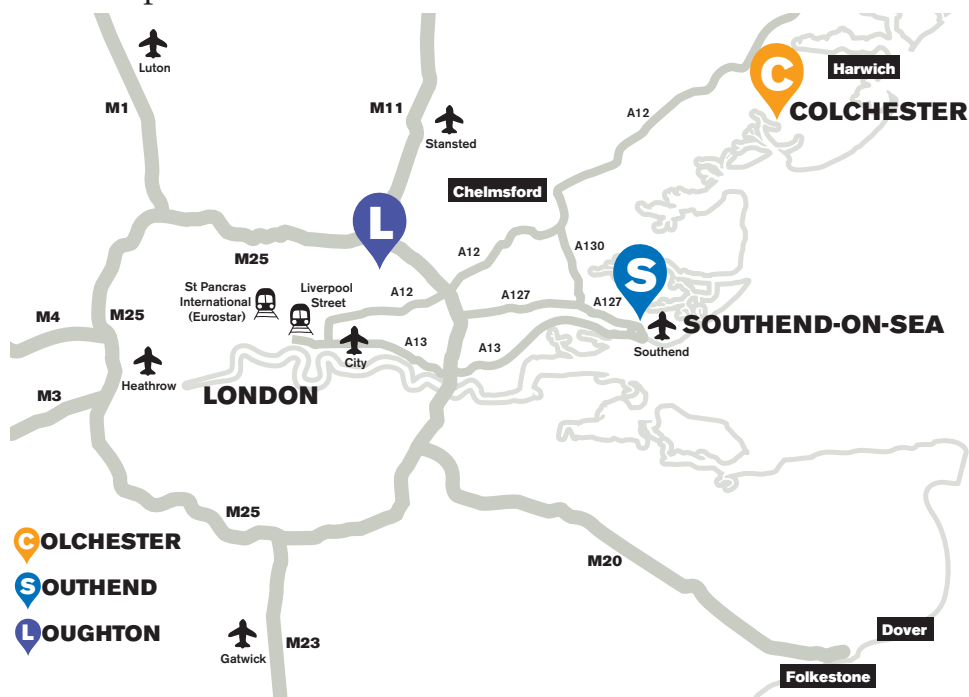
We have campuses in Colchester, Loughton and Southend, each with excellent links to transportation and easy access to London and further afield.

Colchester to:

- Central London: 60 miles (97km); approximately 45 minutes to one hour by train, 1 hour and 40 minutes by car.
- Stansted Airport: 33 miles (53km); approximately 1 hour and 15 minutes by bus, 50 minutes by car.
- Southend Airport: 41 miles (66km); approximately 1 hour and 15 minutes by train, 1 hour by car.
- Gatwick Airport: 83 miles (133km); approximately 1 hour and 50 minutes by train, 1 hour and 40 minutes by car.
- Heathrow Airport: 90 miles (150km); approximately 2 hours and 10 minutes by train, 1 hour and 55 minutes by car.



Our campuses



Your on-campus accommodation



The Towers

Size: 1,142 rooms

Cost per week: £76.93 - £88.20

13-16 rooms per flat, shared showers and toilets



South Courts

Size: 1,218 rooms

Cost per week: £135.38

4-12 rooms per flat, en suite facilities, some adapted rooms available



The Houses

Size: 267 rooms

Cost per week: £122.64

4-6 rooms per flat, en suite facilities, some adapted rooms available



University Quays

Size: 766 rooms

Cost per week from: £123.69

7-8 rooms per flat, en suite facilities



The Meadows

Size: 228 townhouse rooms with shared bathrooms plus 420 en suite rooms

Cost per week: £131.39 and £140.98 respectively

4-12 rooms per flat ground floor lounge/kitchen

It's likely that our rental charges for 2017-18 will increase from these current prices. We'll publish the new prices on our website as soon as they are available.

► www.essex.ac.uk/accommodation

Colchester Campus

Our Colchester Campus offers a dynamic environment for living and learning.

Our extensive facilities and services ensure you achieve the most from your studies. All on one compact site, two miles from Britain's oldest recorded town. One of the most internationally diverse campus universities, you have the perfect environment for your academic and social life.

Community on campus

The squares are always buzzing with life. There are loads of opportunities to catch up with friends, have a pint outside the SU bar or grab lunch between lectures. Get cakes and curries on market day, piping hot pies on the No. 64 bus café, or mega milkshakes in our Happy Days diner. Or you could join in with karaoke, quizzes and a game of pool in one of our many bars, catch a film in our cinema Cine10, or dance the night away in our award-winning nightclub Sub Zero.

Sports and societies

This is your chance to pursue your passions. You can meet like-minded people or try out something new with our SU's 150+ sports clubs and societies. As well as providing opportunities for high-performing athletes, with our first-class gym, professional fitness staff and competitive sport provision, at Essex we want to make sure that everyone can get involved. There are over 30 drop-in sport sessions a week, and regular leagues and tournaments that are more relaxed.

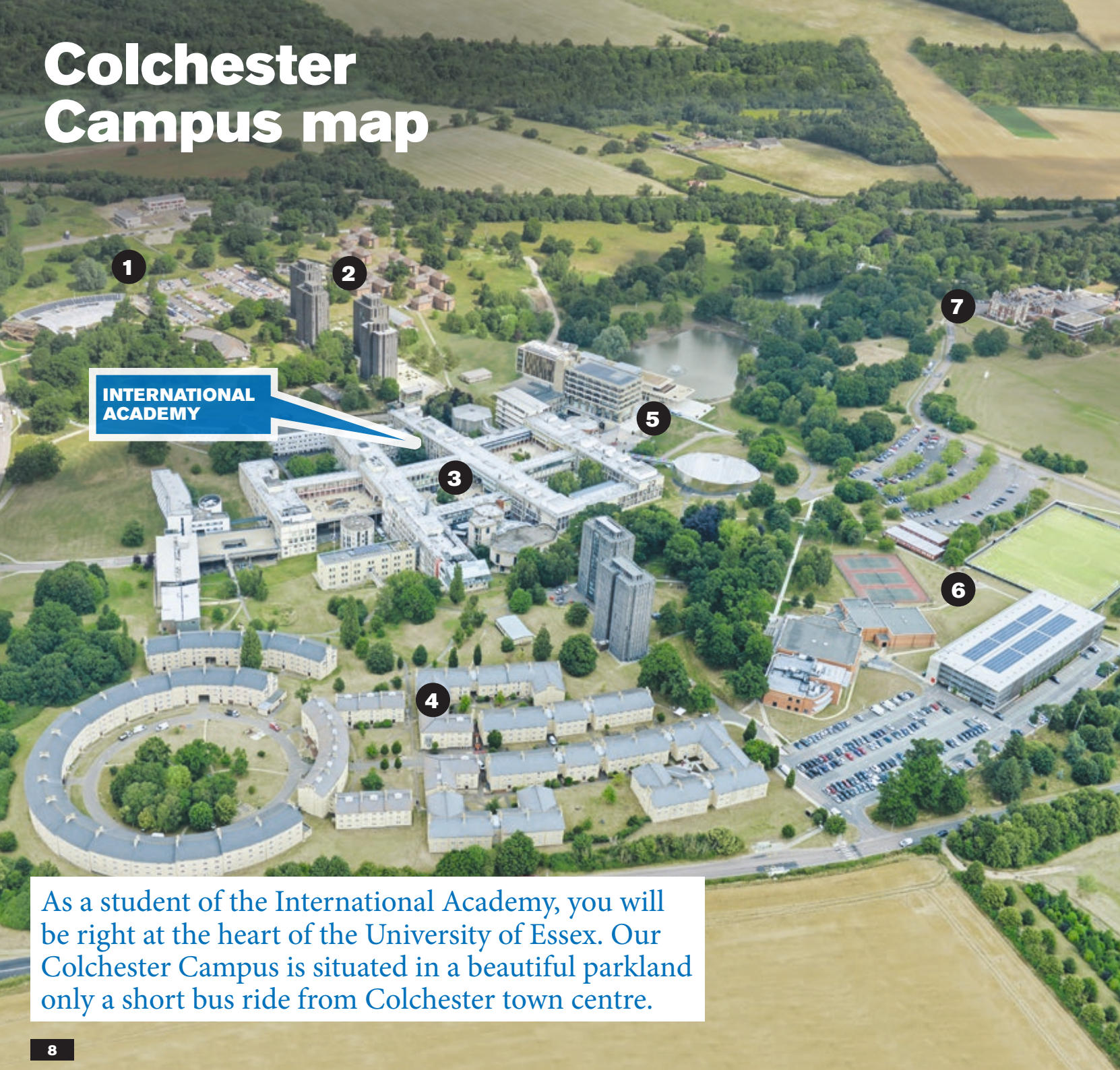
Creative Colchester

Our campus is an inspiring place to be – did you know that artist John Constable painted Wivenhoe Park (now home to our Edge Hotel School) in 1816? And we're still mad about the arts today. We bring both internationally famous and emerging artists into the heart of our campus, and offer you the chance to work with them. We're the proud home of ESCALA, a world-renowned Latin American art collection, and also offer opportunities for students to hone their creative skills at our Art Exchange gallery. Never satisfied with the ordinary, Art Exchange has so far released 15 lobsters, singing post boxes, and a pair of Victorians onto campus. What they do next could be up to you. Our Lakeside Theatre also hosts internationally acclaimed plays, live music, performances by our own (incredibly talented) drama students, and you can get involved through the regular open mic nights, show auditions and creative workshops.

“Our University is a community whose concern is not just with the pursuit of learning but with the fulfilment of lives”

Sir Albert Sloman, founding Vice-Chancellor

Colchester Campus map



**INTERNATIONAL
ACADEMY**

As a student of the International Academy, you will be right at the heart of the University of Essex. Our Colchester Campus is situated in a beautiful parkland only a short bus ride from Colchester town centre.

- 1 North-west campus**
 - University Quays accommodation (10 minute walk)
 - The Meadows accommodation (5 minute walk)
 - Essex Business School
 - Day Nursery
- 2 North campus**
 - North Towers accommodation
 - The Houses accommodation
 - Health Centre
 - Tony Rich Teaching Centre
 - The North Teaching Centre
- 3 Central campus**
 - Lecture Theatre Building
 - Academic departments
 - Lecture and seminar rooms
 - Students' Union
 - Bars, cafés and restaurants
 - Shops, banks and Post Office
 - Information Centre
- 4 South campus**
 - South Towers accommodation
 - South Courts accommodation
- 5 East campus**
 - Ivor Crewe Lecture Hall
 - Silberrad Student Centre
 - Albert Sloman Library
 - Lakeside Theatre and Café
 - Art Exchange
 - Waterstones bookshop
 - Parkland and lakes
- 6 South-east campus**
 - Tennis courts
 - Synthetic turf pitch
 - Sports Centre
 - Evolve Gym
- 7 Wivenhoe Park**
 - Wivenhoe House restaurant and hotel
 - Edge Hotel School
 - Campus farm
 - Sports pitches and parkland

Study with us

We offer great flexibility as you can apply directly via email or, for some courses, via UCAS. For direct applications, download an application form, where you can also find additional information on how to apply.

► www.essex.ac.uk/internationalacademy/apply

COURSE	ENTRY TO	COURSE LENGTH	LENGTH OF VISA*	HOW TO APPLY	WHO IS ELIGIBLE	FEES***	MINIMUM IELTS REQUIRED	ACADEMIC REQUIREMENTS	DOCUMENTATION REQUIRED
International Foundation Programme (QCF level 3)	Year 1 at Essex or other universities	October to June or January to July 22 teaching weeks	Length of this course	Direct to iaapply@essex.ac.uk	EU and international students	EU £9,000 Overseas £11,750	5.0 overall, with at least 4.0 in each component	Good academic record at senior secondary/high school Some courses require GCSE Maths Grade C or equivalent	<ul style="list-style-type: none"> Completed application form Acceptable English language qualification Academic transcripts Academic reference from your last place of study Personal statement
Four-year degrees (Year Zero) (FHEQ level 6)	Year 1 at Essex	October to June or January to July 22 teaching weeks Plus three years	Length of this course, plus three years of your UG degree	UCAS www.ucas.com	UK, EU and international students**	UK/EU £9,000 (UK and EU students are eligible for student loans) Overseas £11,750	5.5 overall and in each component	A-levels: DDD, or equivalent in UCAS tariff points, to include two full A-levels or Good academic record at senior secondary/high school Some courses require GCSE Maths Grade C or equivalent	Completed UCAS application
International Year One in Business (FHEQ level 4)	Year 2 of Essex Business School in Colchester	October to July 32 teaching weeks	Length of this course	Direct to iaapply@essex.ac.uk or UCAS www.ucas.com	EU and international students	£13,350	5.5 overall, with at least 5.0 in writing and 4.0 in every other component	A-levels: CDD, or equivalent in UCAS tariff points, to include two full A-levels GCSE: Mathematics C or Very good academic record at senior secondary/high school	<ul style="list-style-type: none"> Completed application form Acceptable English language qualification Academic transcripts Academic reference from your last place of study Personal statement
Pre-Masters Graduate Diplomas	Masters at Essex	October to June 22 teaching weeks	Length of this course	Online on our website	UK, EU and international students	UK/EU £4,900-£5,760 Overseas £10,045	5.5 overall and in each component	A relevant degree or a three-year higher education qualification from recognised institutions	<ul style="list-style-type: none"> Essex online application
Pre-sessional	UG and PG degrees at Essex UG and PG pathways at Essex	PALSS: 25, 15, and 10 weeks. PEL: 10 and 5 weeks. Subject-specific: 10 weeks.	For the duration of this programme	Direct to intacad@essex.ac.uk	Students with conditional offers to Essex	PALSS: £325 per week PEL and subject-specific: £350 per week	See the pre-sessional section on page 24	Conditional offer for an Essex course	<ul style="list-style-type: none"> Completed application form IELTS result A copy of your offer from Essex Copy of your passport
Pre-sessional Essex Academic Skills Programme	UG and PG degrees at Essex	4 weeks	CAS linked with your degree	Direct to intacad@essex.ac.uk	Students with unconditional offers to Essex	£600	No additional IELTS required	Unconditional offer for an Essex course	<ul style="list-style-type: none"> Completed application form IELTS result A copy of your offer from Essex Copy of your passport
Essex English Language Programme	No pathway progression	Terms of five weeks in length, for up to 40 weeks	Various options	Direct to intacad@essex.ac.uk	Everyone	£1,475 for five weeks	No IELTS needed	No specific academic qualifications needed	<ul style="list-style-type: none"> Completed application form Copy of your passport Copy of previous English language test or qualification Copy of previous academic transcripts and qualifications

* Students who require a Tier 4 visa to study in the UK will be issued a CAS (Confirmation of Acceptance for Studies) to apply for a visa for the length of their studies specified in this table.

** UK students can register on selected pathway routes.

*** All fees are correct at the time of print and may be subject to change.

International Foundation Programme



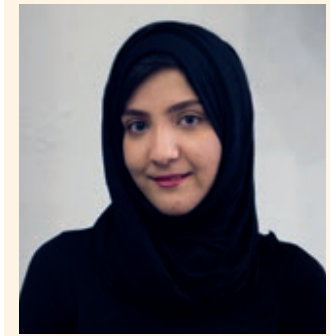
If you are an international or EU student and need to supplement your high school studies or improve your English language skills before the start of your degree, our International Foundation Programme is for you.

If your high school curriculum has followed an 11- or 12-year system, you may need to complete a foundation programme before pursuing an undergraduate course. Our programmes consist of subject-specific skills related to your future studies, along with academic skills that allow you to progress onto a wide range of undergraduate courses upon successful completion. Our foundation programme has two start dates for most subject areas, one in October and the other one in January. You will need to pass all your modules with 40% in order to receive guaranteed progression to the first year of your undergraduate course.

Students who require a Tier 4 visa to study in the UK must have a Secure English Language Test (IELTS or Trinity ISE).

Programme entry options

SUBJECTS	OCTOBER START	JANUARY START
Accounting	✓	✓
Actuarial science	✓	
Banking and finance	✓	✓
Business management	✓	✓
Computer science	✓	✓
Criminology	✓	✓
Drama	✓	✓
Economics	✓	✓
Electronic engineering	✓	
English language and English language teaching	✓	✓
Entrepreneurship and business	✓	✓
Film studies	✓	✓
Finance	✓	✓
History	✓	✓
International relations	✓	✓
Law	✓	✓
Liberal arts	✓	✓
Linguistics	✓	✓
Literature	✓	✓
Mathematics	✓	
Modern languages	✓	✓
Philosophy	✓	✓
Politics	✓	✓
Sociology	✓	✓
Telecommunications engineering	✓	



“ Being an International Academy student has been a great introduction to Essex. I feel very at home and have been able to get to know people from different cultures and backgrounds, and understand them better. The academic skills module on the International Foundation Programme was particularly useful as it allowed me to develop my English language skills which have helped me in subsequent years during my BA International Relations degree.

The best thing about studying in the International Academy was the support available to students, which is excellent. Someone was always there to help me when I needed advice or if I had problems. ”

Ameerah Alahmed, UAE

Four-year degrees (Year Zero)

Most of our four-year degrees are open to UK, EU and overseas students. Our courses offer an excellent introduction to your chosen subject together with additional academic skills support. You will need to pass all your modules with 40% in order to progress to the first year.

UCAS CODE	ESSEX BUSINESS SCHOOL	OCTOBER START	JANUARY START
N401	BSc Accounting	✓	✓
NN43	BSc Accounting and Finance	✓	✓
NN42	BSc Accounting and Management	✓	✓
N4L1	BSc Accounting with Economics	✓	✓
N201	BSc Business Management	✓	✓
N301	BSc Finance	✓	✓
N341	BSc Financial Management	✓	✓
ECONOMICS			
L103	BSc Economics	✓	✓
L102	BA Economics	✓	✓
L117	BSc Financial Economics	✓	✓
L118	BA Financial Economics	✓	✓
L160	BA International Economics	✓	✓
L161	BSc International Economics	✓	✓
L191	BSc Management Economics	✓	✓
L190	BA Management Economics	✓	✓
HUMANITIES AND SOCIAL SCIENCES			
VT2T	BA American History	✓	✓
V350	BA Art History	✓	✓
P300	BA Communications and Digital Culture	✓	✓
M903	BA Criminology	✓	✓
Q320	BA English Literature	✓	✓
V102	BA History	✓	✓
QV2C	BA History and Literature	✓	✓
L250	BA International Relations	✓	✓
LQV0	BA Liberal Arts	✓	✓
QV2H	BA Literature and Art History	✓	✓
V144	BA Modern History	✓	✓
V502	BA Philosophy	✓	✓
VV51	BA Philosophy and History	✓	✓
VQ52	BA Philosophy and Literature	✓	✓
L202	BA Politics	✓	✓
L304	BA Sociology	✓	✓
LMHX	BA Sociology and Criminology	✓	✓

UCAS CODE	COMPUTER SCIENCE AND ELECTRONIC ENGINEERING	OCTOBER START	JANUARY START
G403	BSc Computer Science	✓	✓
GH46	BEng Computers with Electronics	✓	✓
I1GF	BSc Data Science and Analytics	✓	
H61P	BEng Electronic Engineering	✓	
HP41	BEng Telecommunication Engineering	✓	
LANGUAGE AND LINGUISTICS			
QV36	BA English Language and History	✓	✓
QQ3G	BA English Language and Language Development	✓	✓
QQ16	BA English Language and Linguistics	✓	✓
QQ24	BA English Language and Literature	✓	✓
LQ36	BA English Language and Sociology	✓	✓
QX41	BA English Language and Teaching English as a Foreign Language	✓	✓
RR20	BA French Studies and Modern Languages	✓	✓
RR90	BA German Studies and Modern Languages	✓	✓
LR59	BA International Relations and Modern Languages	✓	✓
RR40	BA Italian Studies and Modern Languages	✓	✓
Q143	BA Language Studies	✓	✓
Q102	BA Linguistics	✓	✓
QR49	BA Literature and Modern Languages	✓	✓
Q229	BA Literature with Modern Languages	✓	✓
R999	BA Modern Languages	✓	✓
RQ99	BA Modern Languages and English Language	✓	✓
RQ98	BA Modern Languages and Linguistics	✓	✓
R8T8	BA Modern Languages and Teaching English as a Foreign Language	✓	✓
R8T9	BA Modern Languages with Latin American Studies	✓	✓
V950	BA Philosophy and Modern Languages	✓	✓
V590	BA Philosophy with Modern Languages	✓	✓
RR60	BA Portuguese Studies and Modern Languages	✓	✓
LR49	BA Politics and Modern Languages	✓	✓
RR50	BA Spanish Studies and Modern Languages	✓	✓
R4T9	BA Spanish Studies with Latin American Studies	✓	✓
RT99	BA Spanish, Portuguese and Brazilian Studies	✓	✓
MATHEMATICS			
G104	BSc Mathematics	✓	
N325	BSc Actuarial Science	✓	
LAW			
M101	LLB Law	✓	✓

Each four-year degree has its own UCAS code and you will need to apply through UCAS for these courses.

Course structure

International Foundation Programme and four-year degrees

Modules for pathways to computer science and electronic engineering

Computers and Electronics
Mathematics and Statistics or Pure Mathematics
Computer Programming
Academic Skills

Modules for pathways to Essex Business School

Mathematics and Statistics
Introduction to Business Management
Introduction to Economics
Academic Skills

Modules for pathways to humanities, social science, and language and linguistics degrees

Western Philosophy: Fundamental Questions, Major Thinkers
Major Writers in English Literature
An Introduction to the History of the UK during the 20th Century
Political and Social Theory from Plato to the Present Day
Academic Skills

Modules for pathways to law

Introduction to Law
Introduction to UK Human Rights
Introduction to Legal Theory
Academic Skills

Modules for pathways to mathematics

Pure Mathematics
Introduction to Business Management
Introduction to Economics/Computer Programming (BSc Actuarial Science)
Academic Skills

Modules for pathways to economics

Mathematics and Statistics
Introduction to Business Management
Introduction to Economics
Academic Skills



“I enrolled at the International Academy in 2011 and it was one of the best decisions I’ve ever had – studying the International Foundation Programme prepared me to successfully transition onto my degree. The teachers were helpful, and always had time for me.

I’ve just graduated with an LLB Law and Politics degree, and I am the VP International for the Students’ Union here at Essex for the next year finishing in summer 2017, so I don’t have to leave just yet!”

Saffy Roselan Johar, Malaysia

International Year One in Business

If you are an EU or international student and have completed an 11- or 12-year high school system or a foundation course with a good academic record, our course could be for you.

Our International Year One course is equivalent to the first year of study of an undergraduate degree in Essex Business School with the addition of employability and academic skills classes, which will provide you with all the necessary subject knowledge and language skills to confidently progress in your studies. You will need to pass all your modules with 40% in order to receive guaranteed progression to the second year of your chosen course.

Students who require a Tier 4 visa to study in the UK must have a Secure English Language Test (IELTS or Trinity ISE).

Progression to the following courses in Essex Business School:

- BSc Accounting
- BSc Accounting with Economics
- BSc Accounting and Finance
- BSc Accounting and Management
- BSc Banking and Finance
- BSc Business Management
- BSc Finance
- BSc Financial Management
- BSc Management and Marketing

INTERNATIONAL YEAR ONE IN BUSINESS MODULES

- Introduction to Accounting
- Introduction to Management and Marketing
- Introduction to Economics
- Quantitative Methods and Financial Mathematics
- Introduction to Finance
- Applied Business Communication
- Academic Literacy

ESSEX BUSINESS SCHOOL YEAR ONE MODULES

- Introduction to Accounting
- Introduction to Management and Marketing
- Economics for Business
- Quantitative Methods and Finance
- Research and Study Skills for Professional Development



“What I liked the most about this course is the lecture structure and the way my lecturers explained how to learn. My favourite thing about being a University of Essex student is the learning environment; I feel it's very suitable for international students and the teachers are there to answer all your questions.”

Yuan Quan, China

Successful completion of one of our pre-Masters graduate diplomas will guarantee your progression to a relevant Masters course and provide you with the necessary academic skills and language proficiency to pursue your postgraduate study at Essex.

You'll develop critical thinking, research skills and an understanding of research methods, while experiencing learning in a world-class academic environment. Our subject-specific pre-Masters are designed to improve your subject knowledge as well as your language and academic skills before progressing onto a Masters. Your English for Academic Purposes (EAP) modules are taught by the International Academy, while your subject modules are taught by your chosen department, allowing you to gain direct experience of study in your discipline.

PRE-MASTERS	WITH PROGRESSION TO
Accounting with EAP	<ul style="list-style-type: none"> ■ MSc Accounting ■ MSc Accounting and Finance
Applied Linguistics with EAP	<ul style="list-style-type: none"> ■ MA Applied Linguistics ■ MA TEFL/TESOL
Art History with EAP	<ul style="list-style-type: none"> ■ MA Art History and Theory ■ MA Curating
Computer Science with EAP	<ul style="list-style-type: none"> ■ MSc Advanced Computer Science ■ MSc Advanced Web Engineering ■ MSc Artificial Intelligence ■ MSc Big Data and Text Analytics ■ MSc Cloud Computing ■ MSc Computer Engineering ■ MSc Computer Games ■ MSc Data Science ■ MSc Embedded Systems ■ MSc Intelligent Systems and Robotics
Economics with EAP	<ul style="list-style-type: none"> ■ MSc Accounting and Financial Economics ■ MSc Applied Economics and Data Analysis ■ MA Economics ■ MSc Behavioural Economics ■ MSc Economics ■ MSc Economics and Econometrics ■ MSc Financial and Business Economics ■ MSc Financial Economics ■ MSc Financial Economics and Econometrics ■ MSc Financial Econometrics ■ MSc International Economics ■ MSc Management Economics
Electronic Engineering with EAP	<ul style="list-style-type: none"> ■ MSc Computer Networks and Security ■ MSc Electronic Engineering ■ MSc Telecommunication and Information Systems
Entrepreneurship and Innovation with EAP	<ul style="list-style-type: none"> ■ MSc Entrepreneurship and Innovation ■ MSc Global Project Management ■ MSc International Business and Entrepreneurship ■ MSc International Marketing and Entrepreneurship
European Union Law with EAP	<ul style="list-style-type: none"> ■ LLM European Union Law
Finance with EAP	<ul style="list-style-type: none"> ■ MSc Banking and Finance ■ MSc Finance and Investment
History with EAP	<ul style="list-style-type: none"> ■ MA History ■ MA History (Cultural and Social History Pathway) ■ MA History (Local and Regional History Pathway) ■ MA History (Public History Pathway)
International Commercial and Business Law with EAP	<ul style="list-style-type: none"> ■ LLM International Commercial and Business Law
International Trade Law with EAP	<ul style="list-style-type: none"> ■ LLM International Trade Law
Management with EAP	<ul style="list-style-type: none"> ■ MSc International Management ■ MSc Management ■ MSc Marketing and Brand Management ■ MSc Human Resource Management
Philosophy with EAP	<ul style="list-style-type: none"> ■ MA Philosophy
Politics with EAP	<ul style="list-style-type: none"> ■ MA Politics
Psychological Studies with EAP	<ul style="list-style-type: none"> ■ MSc Psychology
Psychoanalytic Studies with EAP	<ul style="list-style-type: none"> ■ MA Psychoanalytic Studies

PRE-SESSIONAL PROGRAMMES



“ Through different events and activities arranged by the Pre-sessional academic staff, I was able to develop my social skills alongside my educational ones as well. Through various exercises, such as essay writing, text analysis and grammar lessons, I became well prepared for my BA International Relations course.

In short, due to the valuable Pre-sessional course, my first academic year in the University of Essex became an enjoyable rather than a challenging experience. ”

Bintu Sarah Sakor, Norway

We offer different types of pre-sessional English language programmes based on your needs and English proficiency. If you hold a *conditional* offer for an Essex degree, you can choose from our PALSS, PEL, or subject-specific pathway programmes; if you hold an *unconditional* offer, you can enrol on to our EASP.

Pre-sessional Academic, Language and Study Skills programme (PALSS)

Our programme provides you with integrated training in academic English and study skills. PALSS runs for 10, 15 and 25 weeks, providing improvement in your IELTS score equivalent to 0.5, 1.0 and 1.5 respectively. PALSS will help you develop the following skills:

- Reading – critical reading and note-taking skills
- Writing – academic essay writing and citation skills
- Listening – understanding lectures and note-taking skills
- Speaking – seminar discussion, debating and presentation skills

While the 25-week programme is only open to postgraduate students, the 10- and 15-week programmes lead to both undergraduate and postgraduate Essex degrees.

Pre-sessional English Language programme (PEL)

Our programme focuses on enhancing your English language skills. You will be taught further grammar and vocabulary development, as well as additional reading, writing, listening and speaking skills. PEL runs for 5 and 10 weeks and provides an improvement in your IELTS score equivalent to 0.5 and 1.0 band respectively.

Subject-specific pre-sessional programme

If you have an offer for Essex Business School or the School of Law you may study our customised 10-week pre-sessional programme, which will contribute to your subject language skills, as well as your academic English language development.

Essex Academic Skills Programme (EASP)

If you have an unconditional offer to study at Essex, you can take our Essex Academic Skills Programme (EASP) before your course. EASP introduces you to the academic study and research skills commonly used at UK universities and will help you become familiar with Essex and adjust more easily to our academic culture. Our programme will prepare you for your future studies with us and will help you achieve your academic goals.

Which is the best course for me?

Use our pre-sessional finder on our website to decide which is the best pre-sessional programme for you.

► www.essex.ac.uk/internationalacademy

How long should you study pre-sessional English for?

PRE-SESSIONAL ENTRY FOR UNDERGRADUATE COURSES			
Minimum IELTS entry levels			Pre-sessional programme options
overall	writing	any other component	
5.5	5.0	5.0	10-week PALSS programme or 5-week PEL programme
5.0	5.0	5.0	15-week PALSS programme or 10-week PEL programme

PRE-SESSIONAL ENTRY FOR POSTGRADUATE COURSES			
Minimum IELTS entry levels			Pre-sessional programme options
overall	writing	any other component	
0.5 band below entry	0.5 band below entry (5.0 min.)	5.0	10-week PALSS programme or 5-week PEL programme
1.0 band below course overall entry	1.0 band below entry (5.0 min.)	5.0	15-week PALSS programme or 10-week PEL programme
1.5 band below course overall entry	1.5 band below entry (5.0 min.)	5.0	25-week PALSS programme

The following Essex Business School Masters require minimum IELTS entry levels for a pre-sessional programme of 6.0 overall and 5.5 in writing:

MSc Human Resources Management; MSc Marketing Management; MSc Management; MSc International Management; MSc Marketing and Brand Management. Please see our website for detailed entry requirements to our programmes.

SUBJECT-SPECIFIC PRE-SESSIONAL PROGRAMMES FOR UNDERGRADUATE COURSES			
Minimum IELTS entry levels			Pre-sessional programme options
overall	writing	any other component	
5.0	5.0	5.0	10-week subject-specific programme

SUBJECT-SPECIFIC PRE-SESSIONAL PROGRAMMES FOR POSTGRADUATE COURSES			
Minimum IELTS entry levels			Pre-sessional programme options
overall	writing	any other component	
1.0 below course overall	1.0 below course overall (5.0 min.)	5.0	10-week subject-specific programme

Pre-degree pre-sessional programmes

If you have an offer for one of our undergraduate pathway courses – International Foundation Programme, four-year degrees (Year Zero) or International Year One in Business – you're also able to take a pre-sessional English language programme if you don't meet your English language requirements.

Our PEL pre-degree pre-sessional programme focuses on enhancing your language skills. You'll be taught grammar and vocabulary development, as well as additional reading, writing, listening and speaking skills.

Our programme runs for 5 weeks and 10 weeks and will provide you with an improvement of 0.5 and 1.0 IELTS band respectively.

PRE-SESSIONAL ENTRY FOR PRE-DEGREE COURSES				
Course	Minimum IELTS entry levels			Pre-sessional Programme
	overall	writing	any other	
International Foundation Programme	4.5	4.0	4.0	5-week PEL
	4.0	4.0	4.0	10-week PEL
International Year One in Business	5.0	4.5	4.5	5-week PEL
	4.5	4.0	4.0	10-week PEL
Four-year degrees (Year Zero)	5.0	5.0	5.0	5-week PEL
	4.5	4.5	4.5	10-week PEL

Dates and fees

PRE-SESSIONAL PROGRAMME	LENGTH	START DATE FOR 2017	DEADLINE FOR APPLICATIONS	TUITION FEE
PEL	5 weeks	17 August	27 July	£1,750
PEL	10 weeks	13 July	22 June	£3,500
PALSS	10 weeks	13 July	22 June	£3,250
PALSS	15 weeks	25 May	4 May	£4,875
PALSS	25 weeks	6 March	13 February	£8,125
EASP	4 weeks	29 August	8 August	£600
Subject-specific	10 weeks	13 July	22 June	£3,500

Please note that all pre-sessional programmes finish on 29 September 2017, one week before the start of the academic year.

Students requiring a Tier 4 visa to study in the UK must have a Secure English Language Test (UKVI IELTS or Trinity ISE), unless they are studying on EASP.

How to apply

To apply for one of our pre-sessional programmes, an application form is available online. You'll need to include a copy of your University offer letter and your most recent English language results with your application and send it to intacad@essex.ac.uk.

Essex English Language Programme

Our Essex English Language Programme (EELP) is available to all students, whether you plan further study at Essex, or just want to learn English in a university environment. Our programme is designed in a flexible way to suit your needs. It is aimed at improving your general and academic English language skills, including IELTS preparation.

Our programme consists of four modules which provide you with English language preparation in line with the Common European Framework of Reference for Languages (CEFR) from A2 to C1:

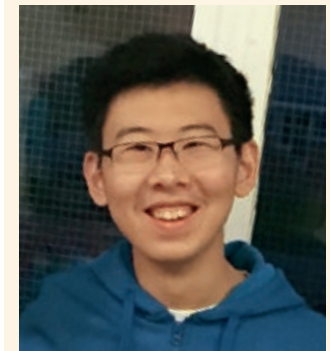
- Foundations of English Language (CEFR A2)
- English Language Development and Foundations of Academic English (CEFR B1)
- Further Studies in English Language and Academic English (CEFR B2)
- Advanced Studies in English Language and Academic English (CEFR C1)

Each module provides language study for up to 40 weeks in continuous five-week terms. Our methods of teaching and learning consist of 24 hours of taught classes, tutorials and guided self-study per week and you'll be regularly updated on your rate of progress.

EELP RUNS THROUGHOUT THE YEAR IN FIVE-WEEK TERMS, STARTING ON THE FOLLOWING DATES FOR THE ACADEMIC YEAR 2016-17:

- 10 October 2016
- 16 January 2017
- 24 April 2017
- 17 July 2017
- 21 August 2017

Students who enrol for ten or more consecutive weeks will be eligible for a free IELTS test at the end of their course.



“ I strongly recommend EELP if you want to improve your English, or simply to get a taste of higher education in the UK. It is already a perfect language course, but there is still so much more beyond studying language at Essex.

Situated in Wivenhoe Park, the University has a marvellous, well-designed campus, boasting a combination of modern architecture and picturesque scenery. ”

Shen Yiming, China

Find out more

E IAinfo@essex.ac.uk

V vimeo.com/channels/essexia

F facebook.com/UoEInternationalAcademy

About this prospectus

This prospectus tries to answer your questions about life and academic provision on offer at the University of Essex. It was prepared in 2016 and refers to courses which will be available in 2016-17. The University makes every effort to ensure the prospectus is accurate at the time it is printed. Exceptionally it can be necessary to make changes, for example to courses, facilities or fees due to legitimate staffing, financial, regulatory or academic reasons. Examples of such reasons might include a change of law or regulatory requirements, industrial action, lack of demand, departure of key personnel, change in government policy, or withdrawal or reduction of funding. Changes to courses may for example consist of variations to the content and method of delivery of programmes, courses and other services, to discontinue programmes, courses and other services and to merge or combine programmes or courses. The University will endeavour to keep such changes to a minimum, and will also keep prospective students informed appropriately by updating our programme specifications, and fees and funding webpages.

► www.essex.ac.uk/programmespecs

The University cannot be held responsible for failure/delay in performing obligations caused by things beyond its reasonable control, such as fire, flood or industrial action.

If you accept an offer of a place, it will be subject to the University's terms and conditions.

► www.essex.ac.uk/see/admissions-regs

The full Procedures, Rules and Regulations of the University governing how it operates are set out in the Charter, Statutes and Ordinances and in the University Regulations, Policy and Procedures.

► www.essex.ac.uk/about/governance/regulations