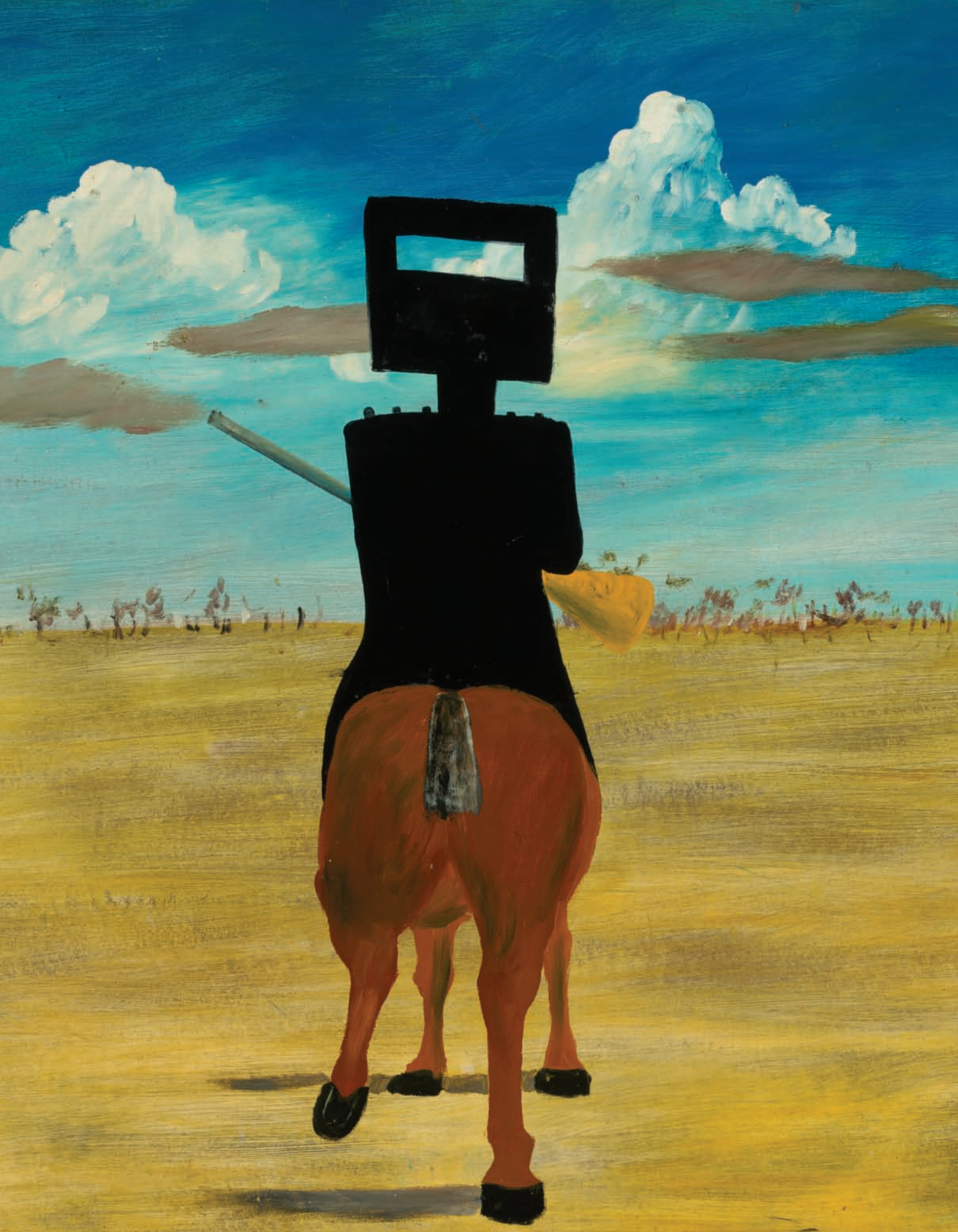


The background of the entire page is a classic landscape painting. It depicts a peaceful rural scene. In the foreground, a grassy slope leads down to a calm pond. Several cows are grazing on the grass. The pond reflects the sky and the surrounding landscape. In the middle ground, there are several farm buildings, including a large barn with a thatched roof and a smaller grey shed. A line of trees separates the farm from the background. In the distance, a large, rounded hill rises against a blue sky filled with soft, white clouds. The overall atmosphere is serene and idyllic.

The art of bequests

Bequests make a lasting contribution to the national collection and ensure future generations will benefit from the foresight and generosity of today's supporters.

Ron Radford, AM
Director, National Gallery of Australia



OUR COLLECTION, OUR FUTURE

The National Gallery of Australia, Canberra, is one of the world's most recently established national galleries. Since opening in 1982 it has evolved into a world-class institution and now has the nation's largest collection, with more than 150 000 works of art.

The national collection of art is the most comprehensive collection of Australian art and includes the largest collection of Aboriginal and Torres Strait Islander art. It also includes art from our region, the Pacific and Asia (particularly Indian and Southeast Asian art), and the nation's largest collection of modern European and American art. The National Gallery of Australia was set up to complement, not rival, the existing state and regional collections.

For a nation formed over only two centuries, yet one with an ancient Indigenous past, our National Gallery is unique among Australian state and international galleries. Our geography, our recent history and Indigenous past give the National Gallery of Australia its points of difference and future direction.

In a highly competitive art market, bequests (and donations) enable the Gallery to acquire significant works of art which might otherwise be out of reach. Numerous benefactors — Australian and international — have contributed greatly to the Gallery in this way.

To recognise the important role benefactors play in the life of the Gallery, we have created the National Gallery of Australia Bequest Circle. Its purpose is twofold: to give us the invaluable opportunity to acknowledge and honour bequest donors during their lifetime; and to give potential and existing bequest donors a unique opportunity to develop a closer relationship with the Gallery.

We hope that you are as excited as we are by the opportunities this presents.

Ron Radford, AM
Director

Front cover:
Claude Monet
France 1840–1926
Waterlilies (Nymphéas) c 1914–17
oil on canvas
181 x 201.6 cm
National Gallery of Australia, Canberra
Purchased 1979

Preceding pages:
Eugene von Guérard
Austria 1811 – England 1901
Purrumbete from across the lake 1858 (detail)
oil on canvas
51 x 85.5 cm
National Gallery of Australia, Canberra
Purchased with funds from the Nerissa Johnson
Bequest 1998

Left:
Sidney Nolan
Australia 1917 – England 1992
Ned Kelly 1946 (detail)
enamel on composition board
90.8 x 121.5 cm
National Gallery of Australia, Canberra
Gift of Sunday Reed 1977

INSPIRING BEQUESTS

Soaring art prices mean that the Gallery depends on major gifts, bequests and donations to develop the collection. Many of the Gallery's finest acquisitions have been possible through the support of generous benefactors.

Following are two inspiring examples of philanthropy that are making a permanent contribution to the National Gallery of Australia and providing for its future.



Left:

Edgar Degas

France 1834–1917

Pauline and Virginie Cardinal conversing with admirers (Pauline et Virginie Cardinal bavardant avec des admirateurs) 1876–77

monotype in black ink heightened with white and grey gouache on chine volant

21.8 x 16.2 cm

National Gallery of Australia, Canberra

The Poynton Bequest 2006

Right:

Andy Warhol

United States of America 1928–1987

Campbell's Soup 1 1968

series of 10 colour screenprints

91.8 x 61.3 cm each

National Gallery of Australia, Canberra

The Poynton Bequest 2006

© Andy Warhol. Licensed by ARS & VISCOPY Australia 2008



Bequest of Orde Poynton, AO, CMG

In 2001, Dr Orde Poynton (1906-2001) bequeathed over \$13 million in perpetuity to the Gallery's Department of International Prints, Drawings and Illustrated Books for the purpose of acquiring works of art. This is the most significant bequest the Gallery has received to date. Orde Poynton had been a generous donor to the Gallery since 1986. His bequest has enabled the Gallery to buy collections of exemplary works by modern masters, including William Morris, Edgar Degas, Paul Gauguin, Pablo Picasso, Henri Matisse, Otto Dix, David Hockney, Frank Stella and Andy Warhol, as well as *ukiyo-e* woodblock prints by famous Japanese artists such as Hiroshige, Hokusai, Kunisada, Yoshitoshi and Shunsen.

In 1992, in recognition of his support, the Gallery dedicated a gallery space for the display of international works on paper and named it the Orde Poynton Gallery. In 2001, Orde Poynton was made an Officer of the Order of Australia in recognition of his service to the arts, particularly as a benefactor to the National Gallery of Australia.

INSPIRING BEQUESTS





I am doing this in the hope that our example will encourage other supporters of the Gallery to follow suit and publicly demonstrate their faith in the future of this great, growing and exciting institution.

Ray Wilson, OAM

Left:
James Gleeson
 Australia 1915–2008
The attitude of lightning towards a lady-mountain 1939
 oil on canvas
 79 x 63.3 cm
 National Gallery of Australia, Canberra
 Purchased with the assistance of James Agapitos, OAM, and Ray Wilson, OAM, 2007

Above left:
 Ray Wilson, OAM, (left) and the late James Agapitos, OAM
 Photograph: Christopher Snee

Above right:
Max Dupain
 Australia 1911–1992
Surreal face of a woman 1938
 gelatin silver photograph
 47 x 35.5 cm
 National Gallery of Australia, Canberra
 Purchased with the assistance of James Agapitos, OAM, and Ray Wilson, OAM, 2007



Gift and bequest of James Agapitos, OAM, and Ray Wilson, OAM

Over some fifteen years, Ray Wilson, OAM, and James Agapitos, OAM, assembled by far the largest and most important collection of Australian Surrealist art. In 2007, Ray Wilson and the late James Agapitos made a remarkably generous gift to the National Gallery of Australia, allowing the Gallery to acquire their extensive collection of 285 works. The acquisition was mostly gift and part purchase. The combined value of the collection is \$6.6 million.

This act of benefaction fulfilled James and Ray's long-held dream to make their collection available to the nation. It will be lasting testimony to their generosity, insight, vision and commitment to Australian art.

Shortly after the opening of the exhibition, *Australian Surrealism: the Agapitos/Wilson collection*, Ray announced he and James had arranged a joint bequest to the Gallery of over \$2 million.



ALBERT NAMATJIRA

HOW YOUR GIFT CAN HELP THE GALLERY

Through my gift I can contribute meaningfully to the work of the National Gallery of Australia in preserving our national art treasury, and do so in community with others who share a love and passion for the visual arts as a vital part of Australia's cultural heritage.

Andrew Lu, OAM

Gifts and bequests make a vital contribution to the Gallery, particularly in funding art acquisitions.

The Gallery acquires works of art of outstanding quality to build on its collections of Australian art including Aboriginal and Torres Strait Islander art, Pacific arts, Asian art (especially Indian and Southeast Asian art), and modern and contemporary European and American art.

The Gallery collects all media, including painting, sculpture, prints, drawings, illustrated books, photography, textiles, decorative arts and design.

Left:
Albert Namatjira
Western Arrernte people
Australia 1902–1959
Ghost gum c 1945–1953 (detail)
watercolour on paper
41 x 31 cm
National Gallery of Australia, Canberra
Gift of Gordon Darling AC CMG and Marilyn Darling
celebrating the National Gallery of Australia's 25th
anniversary 2008

Right:
Alexander Dick
Great Britain 1800 – Australia 1843
Teapot from three-piece tea service c1828
silver and bone
16.5 x 29.9 x 13.9 cm (teapot)
National Gallery of Australia, Canberra
Gift of David Wigram Allen 1979



HOW YOUR GIFT CAN HELP THE GALLERY

Gifts are best directed towards the acquisition of works of art but assisting activities such as exhibitions, publications, education programs and public events are also possible.



Left:

Mathura

Uttar Pradesh, India

Seated Buddha

Kushan period 2nd century

red sandstone

129.5 x 101.5 x 30.5 cm

National Gallery of Australia, Canberra

Purchased with the generous assistance of

Roslyn Packer, AO, 2007

Right:

Clifford Possum Tjapaltjarri

Western Arrernte/Anmatyerre peoples

Australia 1932–2002

Papunya, Western Desert, Northern Territory

Australia

Warlugulong 1977

synthetic polymer paint on canvas

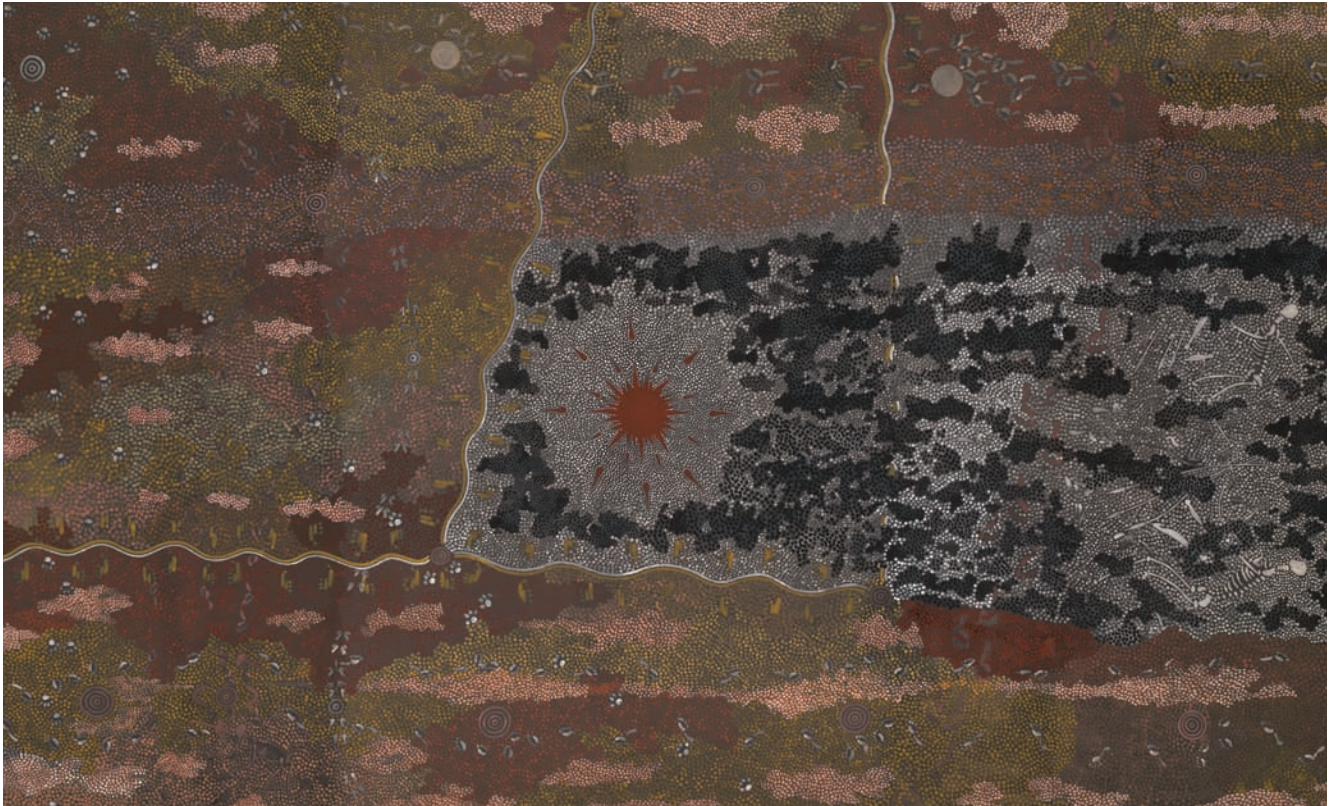
202 x 337.5 cm

National Gallery of Australia, Canberra

Purchased with the generous assistance of

Roslyne Bracher, AM, and the Paspaley Family,
David Coe and Michelle Coe, Charles Curran, AC,
and Eva Curran 2007

© the estate of the artist licensed by Aboriginal
Artists Agency 2008



Works of art are displayed in the National Gallery in Canberra and the national collection is also widely shared through loans and the Gallery's extensive travelling exhibition program. Every day over 1000 visitors are inspired, challenged and delighted by the Gallery's collections and exhibitions. In addition, approximately 8 million people have visited the Gallery's travelling exhibitions throughout Australia and internationally since the program began in 1988.

Millions more gain access to the collection through the Gallery's website and through the Gallery's publication of high-quality books on artists, collections and areas of artistic and cultural significance, as well as exhibition catalogues and the quarterly magazine, *Artonview*.

THE NATIONAL GALLERY OF AUSTRALIA BEQUEST CIRCLE

The National Gallery of Australia Bequest Circle represents and acknowledges the special group of people who have made a commitment to the Gallery by including us in their will.

The Gallery acknowledges Bequest Circle members by:

- formally acknowledging their generosity (with their permission) in the National Gallery of Australia Foundation Annual Report and in *Artonview*
- inviting them to an exclusive Bequest Circle Recognition Annual Event and to other Gallery events and programs
- including bequests of over \$100 000 on the Gallery's Honour Board in the Gallery foyer
- acknowledging all gifts of works of art, or acquisitions made with the support of a bequest, on the work's display label and wherever the image of that work is reproduced.



Muromachi period (1392–1573)

Japan

Pine trees by the shore c 1550

ink, colour, gold, silver and mica on paper
pair of six-fold screens, each 175.3 x 365.7 cm
National Gallery of Australia, Canberra
Gift of Andrew and Hiroko Gwinnett and the
National Gallery of Australia Foundation 2006

To become a member of the Bequest Circle you simply need to let us know that you have remembered the National Gallery of Australia in your will.

Bequests may be made in memory or honour of family or friends.

We welcome all bequests. There are no membership or administration fees. Your bequest will be used solely to acquire works of art for the national collection or for your nominated purpose.

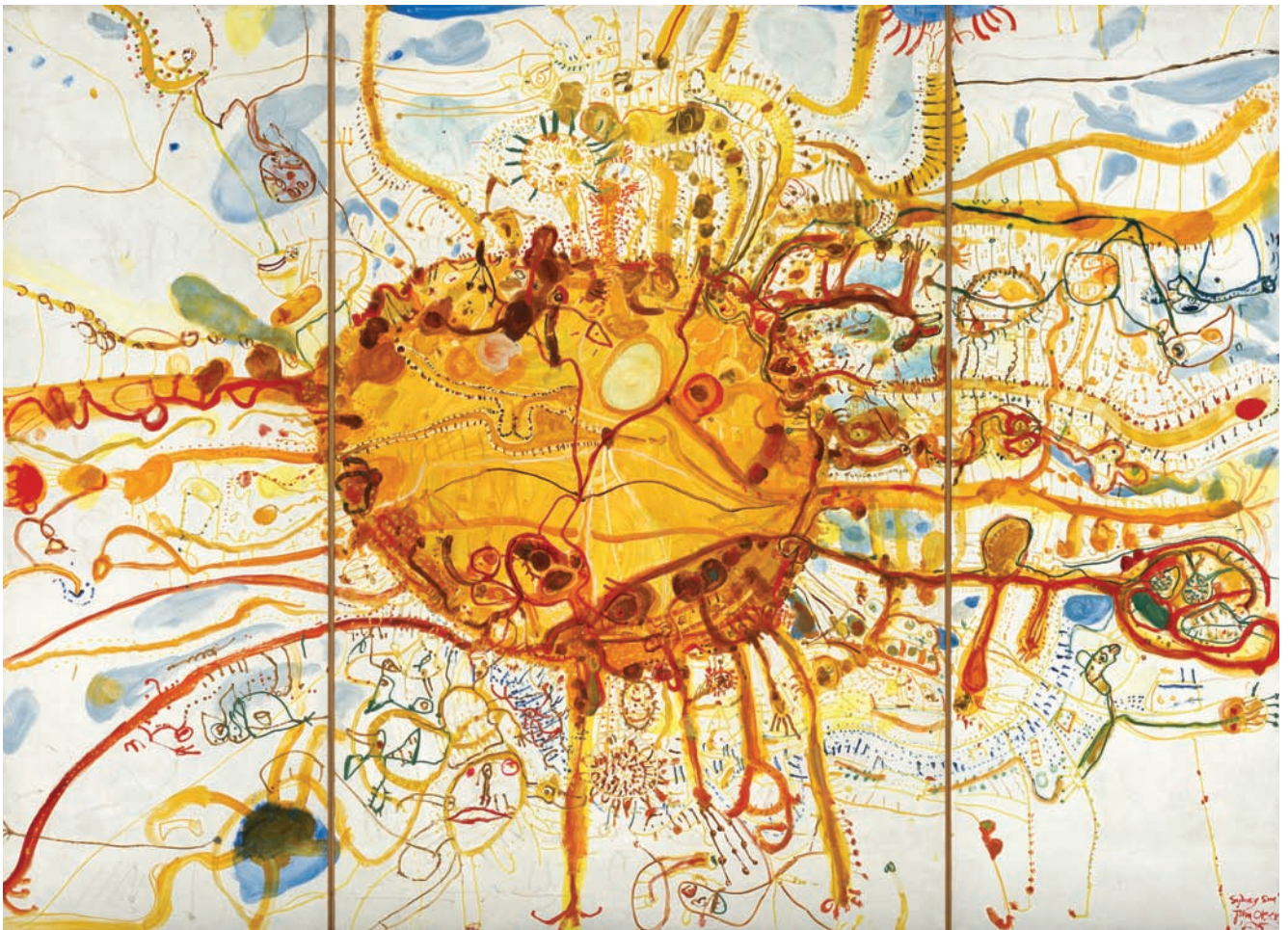
We encourage open discussion to make sure your wishes for your bequest are made clear.



MAKING A BEQUEST

The most common forms of bequest are:

- gift of cash
- percentage of your estate
- work of art
- residuary gift
- an interest in a trust created in the will.





We recommend that you seek professional advice from your solicitor or financial adviser in arranging a bequest to the National Gallery of Australia.

If you are considering leaving the Gallery a gift of art, we encourage you to contact the Foundation. The Gallery acquires works of art in line with its acquisitions policy and our curators can discuss the Gallery's collecting needs.

Useful language

Following are examples of suggested wording to include in your will to make sure that your wishes are enacted.

Gift of art:

'I give my (clearly describe the work of art) to the National Gallery of Australia, Canberra, in the Australian Capital Territory for its use at its absolute discretion.'

Gift of cash or a proportion of your estate:

'I give (proportion of estate or dollar amount or the residue of my estate) to the National Gallery of Australia Foundation, Canberra, in the Australian Capital Territory for the purpose of acquiring works of art.'

Left:
John Olsen
 Born Australia 1928
Sydney sun 1965
 oil on three plywood panels
 305 x 412.5 cm
 National Gallery of Australia, Canberra
 Purchased with funds from the Nerissa Johnson
 Bequest 2000
 © John Olsen Licensed by VISCOPY Australia
 2008

Above right:
 Children looking at Rodin's *Burghers of Calais*
 c 1885-86 in the National Gallery of Australia
 Sculpture Garden

JOINING THE NATIONAL GALLERY OF AUSTRALIA BEQUEST CIRCLE



Grace Cossington Smith
Australia 1892–1984
Eastern Road, Turramurra c 1926
watercolour over pencil on paper
40.6 x 33 cm
National Gallery of Australia, Canberra
Bequest of Mervyn Horton 1984

To become a member of the National Gallery of Australia Bequest Circle you simply need to let us know that you have remembered the National Gallery of Australia in your will.

You can do this in one of the following ways:

- notify us in writing of your intention to make a bequest
- send us a copy of the relevant section of your will
- send us a letter of confirmation from your solicitor.

Bequests to the National Gallery of Australia are managed through the National Gallery of Australia Foundation, a Deductible Gift Recipient.

For additional information about membership of the National Gallery of Australia Bequest Circle or to discuss your bequest options, please complete the enclosed form or contact:

Executive Director
National Gallery of Australia Foundation

Telephone 61 2 6240 6691
Fax 61 2 6240 6529
Email foundation@nga.gov.au

National Gallery of Australia

Parkes Place
Canberra ACT 2600
GPO Box 1150
Canberra ACT 2601
nga.gov.au