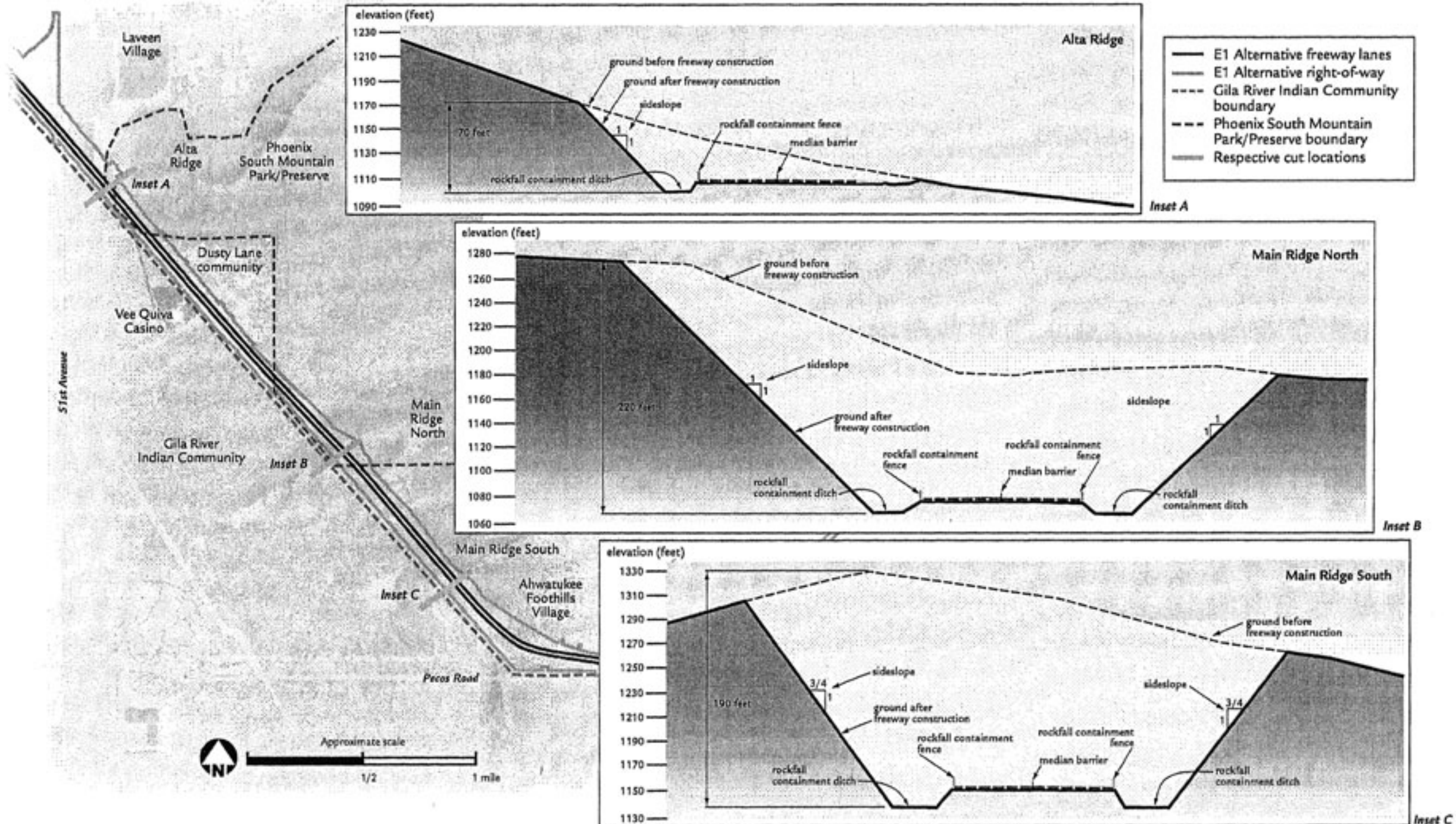
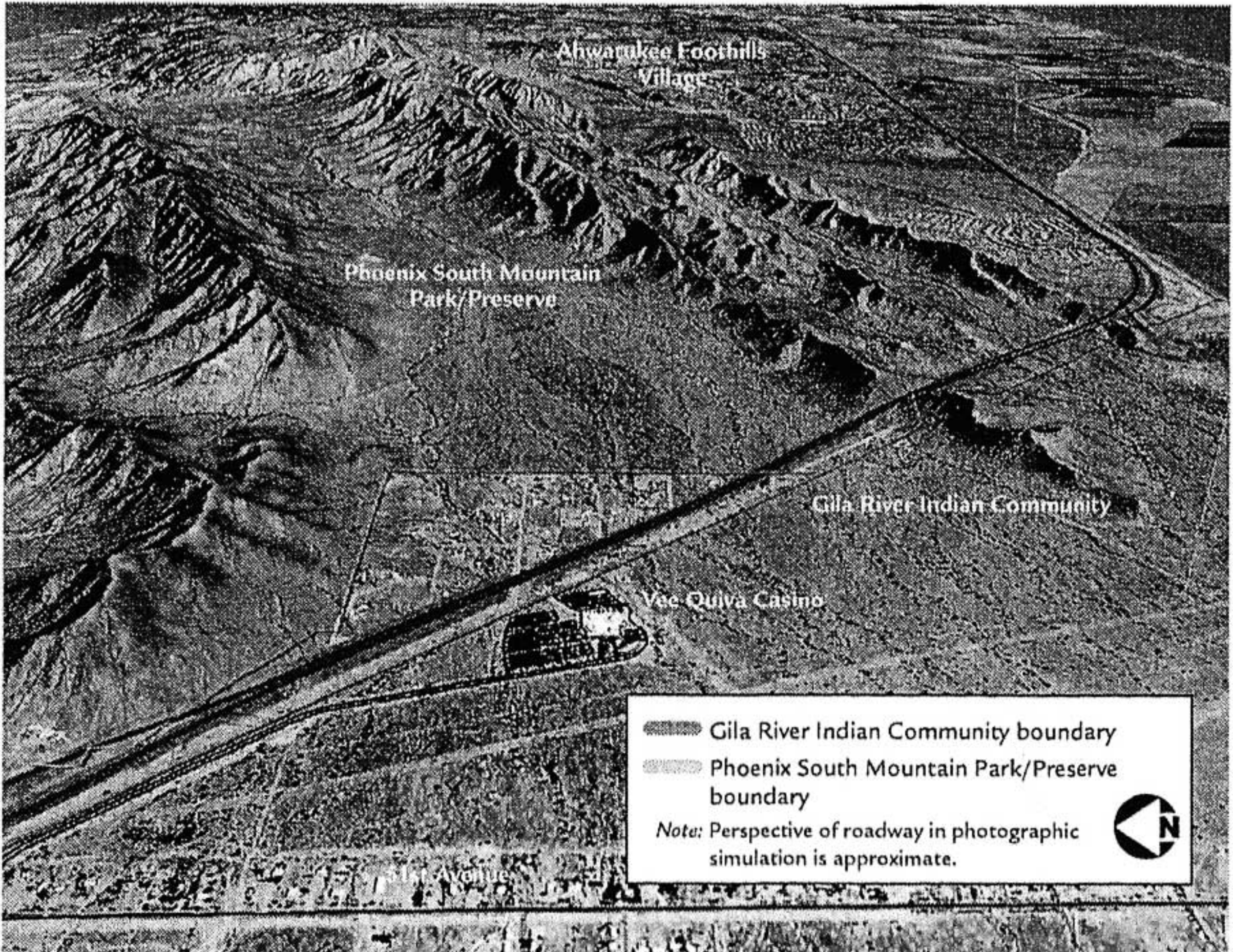


Figure 5-10 Cross Sections, Proposed Roadway Cuts through Ridges of the South Mountains



The proposed roadway cuts to the ridges of the South Mountains could substantially alter the visual setting by replacing natural terrain with subsurface rock exposure, unless mitigated. The final determination of sideslopes and treatments would be made after extensive sampling and geotechnical analysis of rock conditions.

Figure 5-9 Photo Simulations, Proposed Roadway Cuts through Ridges of the South Mountains





Phoenix South Mountain
Park/Preserve

Dusty Lane
community

Gila River Indian Community

Vee Quiva Casino

-  Gila River Indian Community boundary
-  Phoenix South Mountain Park/Preserve boundary

Note: Perspective of roadway in photographic simulation is approximate.

