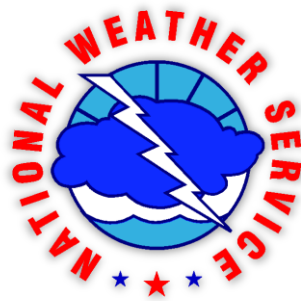


National Fire Weather Report



2015

By

Larry Van Bussum

NWS Fire Weather Operations Coordinator

NOAA/National Weather Service

Boise, ID

Contents

Table of Contents

Incident Meteorologist (IMET) Summary 2015	<u>3</u>
IMET Dispatches 2015	<u>4</u>
IMET Incident Response Summary	<u>16</u>
2015 Statistics.....	<u>17</u>
2015 National Red Flag Warning Verification	<u>22</u>
2015 Locations of All hazards Meteorological Response Systems (AMRS).....	<u>24</u>

NOAA/NWS Incident Meteorologist Program: 2015 Summary

For a summary of 2015 fire season from the National Interagency Fire Center, please see:

http://www.predictiveservices.nifc.gov/intelligence/2014_Statsum/2014Stats&Summ.html

Calendar year 2015 started out slow for Incident Meteorologist (IMET) dispatches, with the first IMET mission on May 5th to New York. This was the latest start to the season for IMETs since 1998. The season remained well below normal for IMETs for much of June, July, and early August, remaining one standard deviation below normal. There were some record-tying missions to Alaska during this time, but the lack of dispatches to the Southwest and Rocky Mountain area kept numbers well below normal.

The 2nd week of August saw numerous missions in northern California, followed closely with more missions in Oregon and Washington. By August 21st the number of annual dispatches had returned to normal and then exceeded it for the remainder of the calendar year. Due to the lack of dispatches early in the year, the number of dispatches never rose above one standard deviation above normal, but given the activity of mid-August, had it been a normal year to begin with, 2015 could have been a record year for dispatches. As it was, the year ended above normal with 153 total missions.

Several records were set during the 2015 calendar year for IMET dispatching. On August 25th, a new record was set for the number of IMETs out at one time, with 44 IMETs on missions that day. The previous record was 34 set in 2000. This string of missions in August set new daily records for IMETs out at once with twenty-two straight days of record high number of IMETs on mission (August 16th – September 6th).

That last IMET was demobed off their incident on October 26th, wrapping up what turned out to be a very busy season. The National Interagency Fire Center declared in January 2016 that the 2015 season burned the most acres in history, with 10.13 Million acres burned, much of that in Alaska, California and the Northwest.

IMET Missions 2015

<i>IMET Home Office</i>	<i>County Warning Area</i>	<i>Incident Location, State</i>	<i>Dispatch</i>	<i>Return</i>	<i>Days</i>
Pellerito Binghamton, NY	BGM	Roosa Gap Fire near Wurstsboro, NY	5/5/15	5/9/15	5
Pendergrast Melbourne, FL	MFL	Mud Lake Complex near Ochopee, FL	5/13/15	5/28/15	16
Keene (T) Medford, OR			5/16/15	5/24/15	9
Byrd Jackson, MS			5/26/15	6/4/15	10
Smith Sacramento, CA	EKA	Saddle Fire near Hyampom, CA	6/12/15	6/16/15	5
Bonk Portland, OR	MFR	Buckskin Fire near Cave Junction, OR	6/14/15	6/27/15	14
Ruthford Anchorage, AK	AFC	Sockeye Fire near Willow, AK	6/15/15	6/23/15	9
Dudley (T) Hanford, CA			6/18/15	6/22/15	5
Thompson Oxnard, CA	HNX	Sky Fire near North Fork, CA	6/19/15	6/24/15	6
Smith Sacramento, CA	HNX	Corrine Fire near Knowles, CA	6/20/15	6/22/15	3
Hoon Reno, NV	REV	Washington Fire near Markleeville, CA	6/22/15	7/5/15	14
Morrison (T) Honolulu, HI			6/24/15	7/5/15	12
Stubblefield Flagstaff, AZ	PSR	Whitetail Fire near San Carlos, AZ	6/22/15	7/29/15	8

<i>IMET Home Office</i>	<i>County Warning Area</i>	<i>Incident Location, State</i>	<i>Dispatch</i>	<i>Return</i>	<i>Days</i>
Curtis Juneau, AK	AFG	Anaconda Creek Fire near North Pole, AK	6/23/15	7/6/15	14
Dudley (T) Hanford, CA			6/23/15	7/1/15	9
Carpenter Western Region HQ	AFG	Rex Complex near Clear, AK	6/24/15	7/6/15	13
Jacobs (T) North Platte, NE	AFG	WFO Fairbanks Support near Fairbanks, AK	6/25/15	7/9/15	15
Hooper Paducah, KY			7/8/15	7/28/15	21
Fleegel Marquette, MI			7/30/15	8/3/15	5
Evenson Burlington, VT	AFG	Aggie Creek Fire near Fairbanks, AK	6/25/15	7/9/15	14
Cassell Anchorage, AK			7/8/15	7/21/15	14
Harty Hanford, CA	SGX	Lake Fire near Seven Oaks, CA	6/25/15	7/5/15	11
Loeffelbein Western Region HQ	AFG	Healy Lake Fire near Delta Junction, AK	6/26/15	7/7/15	12
Bunnag Medford, OR	MFR	Bunker Hill Complex near Diamond Lake, OR	6/28/15	7/4/15	7
Cobb Pendleton, OR	PDT	Sugar Loaf Fire near Dayville, OR	6/29/15	7/6/15	8
Wolf Spokane, WA	OTX	Twenty-One Mile Grade Fire near Republic, WA	7/3/15	7/9/15	7
Carter Spokane, WA	OTX	231 Fire near Springdale, WA	7/4/15	7/12/15	9
Haner Seattle, WA	OTX	Newby Lake Fire near Loomis, WA	7/6/15	7/21/15	16
Cobb Pendleton, OR	PDT	Corner Creek Fire near Dayville, OR	7/6/15	7/14/15	9

<i>IMET Home Office</i>	<i>County Warning Area</i>	<i>Incident Location, State</i>	<i>Dispatch</i>	<i>Return</i>	<i>Days</i>
Weagle Portland, OR	PQR	Horseshoe Fire near Trout Lake, WA	7/7/15	7/13/15	7
Clapp Sacramento, CA	AFG	Baker Fire near Eureka, AK	7/10/15	7/20/15	11
Carter Spokane, WA	OTX	Cape Horn Fire near Bayview, ID	7/13/15	7/17/15	5
Cobb Pendleton, OR	PDT	Blue Creek Fire near Walla Walla, WA	7/22/15	7/28/15	7
Clapp Sacramento, CA	STO	Wragg Fire near Winters, CA	7/23/15	8/1/15	10
Leach Missoula, MT	MSO	Reynolds Fire near Babb, MT	7/23/15	8/4/15	13
Tobin Spokane, WA	OTX	North Boulder 2 Fire near Kettle Falls, WA	7/24/15	8/1/15	9
Walbrun Monterey, CA	STO	Lowell Fire near Gold Run, CA	7/26/15	8/1/15	7
Harty Hanford, CA	HNX	Willow Fire near North Fork, CA	7/26/15	8/7/15	13
Tonkin Eureka, CA	STO	Rocky Fire near Lower Lake, OR	7/30/15	8/13/15	15
Keene Medford, OR	MFR	Cable Crossing Fire near Glide, OR	7/31/15	8/8/15	9
Dudley Hanford, CA	HNX	Cabin Fire near Sequoia Crest, CA	8/1/15	8/9/15	9
Weishaar Portland, OR	MFR	Stouts Creek Fire near Canyonville, OR	8/2/15	8/17/15	16
Manuel Blacksburg, VA			8/14/15	8/24/15	11

<i>IMET Home Office</i>	<i>County Warning Area</i>	<i>Incident Location, State</i>	<i>Dispatch</i>	<i>Return</i>	<i>Days</i>
Walbrun Monterey, CA	EKA	River Complex near Denny, CA	8/2/15	8/14/15	13
Taber Burlington, VT			8/12/15	8/30/15	19
Evenson Burlington, VT			8/29/15	9/6/15	9
Haner Seattle, WA	EKA	Fork Complex near Hayfork, CA	8/2/15	8/4/15	3
Hoon Reno, NV			8/4/15	8/18/15	15
Franks Wilmington, OH			8/15/15	8/26/15	12
Smith Sacramento, CA	MFR	Frog Fire near Scarface, CA	8/2/15	8/8/15	7
Ruthford Anchorage, AK	OTX	Wolverine Fire near Lucerne, WA	8/3/15	8/24/15	22
Gorelow (T) Las Vegas, NV			8/4/15	8/19/15	16
Cassell Anchorage, AK			8/21/15	9/7/15	18
Borsum Billings, MT			9/6/15	9/20/15	15
Thompson Oxnard, CA	EKA	Humboldt Complex near Phillippsville, CA	8/3/15	8/17/15	15
Goudsward Little Rock, AR			8/15/15	8/16/15	2
Mehle Monterey, CA	EKA	Mad River Complex near Mad River, CA	8/3/15	8/11/15	9
Graning Duluth, MN			8/10/15	8/17/15	8
Redman Boise, ID	PDT	Phillips Creek Fire near Elgin, OR	8/4/15	8/12/15	9

<i>IMET Home Office</i>	<i>County Warning Area</i>	<i>Incident Location, State</i>	<i>Dispatch</i>	<i>Return</i>	<i>Days</i>
Fox Spokane, WA	OTX	Baldy Fire near Ione, WA	8/4/15	8/16/15	13
Haner Seattle, WA	EKA	South Complex near Hyampom, CA	8/5/15	8/16/15	12
Shallenberger (T) Jackson, KY			8/8/15	8/21/15	14
Nester Missoula, MT			8/15/15	8/26/15	12
Manuel Blacksburg, VA			8/25/15	9/9/15	16
Bunnag Medford, OR	MFR	National Creek Complex near Diamond Lake, OR	8/5/15	8/19/15	15
Wroe Honolulu, HI			8/17/15	8/23/15	7
Colton Grand Junction, CO			8/21/15	9/2/15	13
Struthwolf Salt Lake City, UT	MFR	Collier Butte Fire near Gold Beach, OR	8/7/15	8/20/15	14
Thompson Oxnard, CA			8/21/15	8/31/15	11
Lebo Wilmington, NC	GSP	Bald Knob Fire near Marion, NC	8/9/15	8/17/15	9
Cerniglia Tucson, AZ	VEF	Willow Fire (AZ) near Arizona Village, AZ	8/9/15	8/13/15	5
Cobb Pendleton, OR	EKA	Gasquet Complex near Crescent City, CA	8/11/15	8/25/15	15
Wallmann Reno, NV			8/23/15	9/7/15	16
Evenson Burlington, VT			9/6/15	9/14/15	9
Van Speybroeck Southern Region HQ			9/12/15	9/20/15	9

<i>IMET Home Office</i>	<i>County Warning Area</i>	<i>Incident Location, State</i>	<i>Dispatch</i>	<i>Return</i>	<i>Days</i>
Clapp Sacramento, CA	STO	Jerusalem Fire near Hidden Valley, CA	8/12/15	8/18/15	7
Wolf Spokane, WA	PDT	Cougar Creek Fire near Glenwood, WA	8/12/15	8/30/15	19
Struthwolf Salt Lake City, UT			8/28/15	9/5/15	9
Keene Medford, OR			9/3/15	9/9/15	7
Bonk Portland, OR			9/8/15	9/17/15	10
Thimmesch Boise, ID	BOI	Soda Fire near Boise, ID	8/12/15	8/17/15	6
Van Speybroeck Southern Region HQ			8/14/15	8/18/15	5
Moore Pueblo, CO	MSO	Clearwater Complex near Kamiah, ID	8/13/15	8/27/15	15
Simosko Bismarck, ND			8/15/15	8/17/15	3
Murdoch (T) Midland, TX			8/22/15	8/25/15	4
Murdoch Midland, TX			8/25/15	8/27/15	3
Borsum Billings, MT	EKA	Route Complex near Hyampom, CA	8/13/15	8/26/15	14
Wister (T) Pendleton OR			8/16/15	8/31/15	16
Weishaar Portland, OR			8/25/15	9/4/15	11
Redman Boise, ID	BOI	Cornet-Windy Ridge Fire near Durkee, OR	8/13/15	8/23/15	11
Zell (T) Tucson, AZ			8/16/15	8/23/15	8

<i>IMET Home Office</i>	<i>County Warning Area</i>	<i>Incident Location, State</i>	<i>Dispatch</i>	<i>Return</i>	<i>Days</i>
Dudley Hanford, CA	HNX	Rough Fire near Hume, CA	8/13/15	8/27/15	15
Berg Fairbanks, AK			8/25/15	9/16/15	23
Sedlock Melbourne, FL			9/12/15	9/13/15	2
Graning Duluth, MN			9/13/15	9/16/15	4
Pendergrast Melbourne, FL			9/14/15	9/25/15	12
Hoenisch Great Falls, MT	BOI	West Scriver/Rapid Fire near Crouch, ID	8/14/15	9/1/15	19
Leach Missoula, MT	MSO	Northeast Kootenai Complex near Libby, MT	8/14/15	8/30/15	17
Messick Pocatello, ID			8/29/15	9/7/15	10
Loeffelbein Western Region HQ	BOI	Tepee Springs near Riggins, ID	8/14/15	9/3/15	21
Goudsward Little Rock, AR			9/1/15	9/12/15	12
Messick Pocatello, ID			9/11/15	9/24/15	14
Byrd Jackson, MS	PDT	County Line 2 Fire near Warm Springs, OR	8/15/15	8/29/15	15
Smith Sacramento, CA			8/29/15	9/2/15	5

<i>IMET Home Office</i>	<i>County Warning Area</i>	<i>Incident Location, State</i>	<i>Dispatch</i>	<i>Return</i>	<i>Days</i>
Tobin Spokane, WA	OTX	Kettle Complex near Republic, WA	8/15/15	9/1/15	18
Jacobs (T) North Platte, NE			8/19/15	8/30/15	12
Byrd Jackson, MS			9/1/15	9/15/15	15
Davis Tampa, FL			9/14/15	9/27/15	14
Quagliariello Charleston, SC	PDT	Eagle Fire near Richland, OR	8/16/15	8/28/15	13
Zell (T) Tucson, AZ			8/23/15	8/26/15	4
Zell Tucson, AZ			8/26/15	8/29/15	4
Keene Medford, OR			8/28/15	8/31/15	4
Messick Pocatello, ID	TFX	Sucker Creek Fire near Lincoln, MT	8/16/15	8/27/15	12
Hooper Paducah, KY	OTX	Okanogan Complex near Omak, WA	8/16/15	9/8/15	23
Carter Spokane, WA			8/20/15	9/10/15	22
Proud – T Columbia, SC			8/28/15	9/8/15	12
Tobin Spokane, WA			9/8/15	9/19/15	12
Fox Spokane, WA			9/9/15	9/21/15	13
Colton Grand Junction, CO	BOI	Bendire Complex near Juntura, OR	8/16/15	8/20/15	5
Mehle Monterey, CA	LOX	Cabin Fire near West Covina, CA	8/16/15	8/19/15	4

<i>IMET Home Office</i>	<i>County Warning Area</i>	<i>Incident Location, State</i>	<i>Dispatch</i>	<i>Return</i>	<i>Days</i>
Goudsward Little Rock, AR	EKA	Nickowitz Fire near Somes Bar, CA	8/16/15	8/29/15	14
Simosko Bismarck, ND	OTX	North Star Fire near Omak, WA	8/17/15	8/31/15	15
Redman Boise, ID			8/29/15	9/9/15	12
Gorelow (T) Las Vegas, NV			9/2/15	9/8/15	7
Gorelow Las Vegas, NV			9/9/15	9/16/15	8
Nester Missoula, MT			9/12/15	9/23/15	12
Thimmesch Boise, ID	BOI	Cougar Fire near Cascade, ID	8/17/15	8/26/15	10
Finch Cheyenne, WY	BOI	El Dorado Fire near Unity, OR	8/17/15	8/25/15	9
Clemmons Flagstaff, AZ	MSO	Thompson Divide Complex near Essex, MT	8/18/15	9/6/15	20
Graning Duluth, MN	PDT	Canyon Creek Complex near John Day, OR	8/19/15	8/25/15	7
Lebo Wilmington, NC			8/22/15	9/1/15	11
Weagle Portland, OR			8/30/15	9/14/15	16
Morford Binghamton, NY	OTX	Clearwater/Municipal/ Motorway North Complex near Kamiah, ID	8/19/15	9/2/15	15
Pellerito Binghamton, NY			8/31/15	9/8/15	9

<i>IMET Home Office</i>	<i>County Warning Area</i>	<i>Incident Location, State</i>	<i>Dispatch</i>	<i>Return</i>	<i>Days</i>
Van Speybroeck Southern Region HQ	OTX	Kaniksu Complex near Usk, WA	8/19/15	8/28/15	10
Harris Fort Worth, TX			8/27/15	9/14/15	19
Mehle Monterey, CA	LOX	Cuesta Fire near San Luis Obispo, CA	8/19/15	8/26/15	8
Walbrun Monterey, CA	PIH	Bobcat Fire near Salmon, ID	8/20/15	8/25/15	6
Szatanek Elko, NV	MSO	Motorway Complex near Kooskia, ID	8/20/15	8/27/15	8
Proud (T) Columbia, SC			8/26/15	8/27/15	2
Murdoch Midland, TX			8/27/15	9/7/15	12
Lipson Riverton, WY			9/5/15	9/16/15	12
Weagle Portland, OR	EKA	Horse Fire near Shelter Cove, CA	8/20/15	8/27/15	8
Carpenter Western Region HQ	OTX	Clark Fork Complex near Clark Fork, ID	8/21/15	9/5/15	16
Leach Missoula, MT			9/3/15	9/8/15	6
Haner Seattle, WA	PDT	Grizzly Bear Complex near Elgin, OR	8/22/15	9/5/15	15
Cerniglia Tucson, AZ			9/3/15	9/18/15	16
Gilchrist Glasgow, MT	MSO	Goat Rock Complex near Libby, MT	8/22/15	9/10/15	20
Leach Missoula, MT			9/9/15	9/14/15	6

<i>IMET Home Office</i>	<i>County Warning Area</i>	<i>Incident Location, State</i>	<i>Dispatch</i>	<i>Return</i>	<i>Days</i>
Bunnag Medford, OR	MSO	Selway Complex near Lowell, ID	8/22/15	9/10/15	20
Fleegel Marquette, MI			9/9/15	9/14/15	6
Clapp Sacramento, CA	OTX	Colville Complex near Kettle Falls, WA	8/24/15	8/31/15	8
Pelton Jackson, KY	SEW	Upper Skagit Complex near Marblemount, WA	8/24/15	8/31/15	8
Walbrun Monterey, CA	PIH	Elevenmile Fire near Challis	8/25/15	9/8/15	15
Stubblefield Flagstaff, AZ	MSO	Bear Lake Fire near Wisdom, MT	8/27/15	9/7/15	12
Graning Duluth, MN	TFX	Family Peak Complex near Essex, MT	8/29/15	9/10/15	13
Jacobs North Platte, NE	OTX	Carpenter Road Fire near Fruitland, WA	8/30/15	9/6/15	8
Moore Pueblo, CO			9/4/15	9/15/15	12
Dudley Hanford, CA	OTX	Avery Complex near Avery, ID	9/2/15	9/14/15	13
Struthwolf Salt Lake City, UT	SLC	Wheeler Fire near Heber City, UT	9/9/15	9/11/15	3
Lebo Wilmington, NC	STO	Butte Fire near Mokelumne Hill, CA	9/11/15	9/26/15	16
Loeffelbein Western Region HQ	STO	Valley Fire near Glenbrook, CA	9/14/15	9/26/15	13
Thimmesch Boise, ID	BOI	Dry Gulch Fire near Richland, OR	9/14/15	9/18/15	5
Carpenter Western Region HQ	STO	Lumpkin Fire near Oroville, CA	9/16/15	9/18/15	3

<i>IMET Home Office</i>	<i>County Warning Area</i>	<i>Incident Location, State</i>	<i>Dispatch</i>	<i>Return</i>	<i>Days</i>
Mehle Monterey, CA	MTR	Tassajarra Fire near Carmel Valley, CA	9/20/15	9/24/15	5
Redman Boise, ID	BOI	Walker Fire near Idaho City, ID	10/13/15	10/15/15	3
Van Bussum NIFC-BOI	BOI		10/15/15	10/20/15	6
Murdoch Midland, TX	EWX	Hidden Pines Fire near Smithville, TX	10/16/15	10/26/15	11

IMET Incident Response Summary

<i>YEAR</i>	<i>FIRES</i>	<i>ACRES</i>	<i>IMET DISPATCHES</i>	<i>IMET DAYS</i>	<i>IMET HOURS</i>
1987	143,877	4,152,575	83	587	8,218
1988	154,573	7,398,889	117	912	12,768
1989	121,714	3,261,732	57	344	4,816
1990	122,763	5,452,874	38	264	3,696
1991	116,953	2,237,714	27	171	2,394
1992	103,830	2,457,665	45	261	3,654
1993	97,031	2,310,420	15	89	1,246
1994	114,049	4,724,014	115	954	13,356
1995	130,019	2,315,730	27	201	2,814
1996	115,025	6,701,390	104	781	10,934
1997	89,517	3,672,616	15	94	1,316
1998	81,043	2,329,709	88	951	13,314
1999	93,702	5,661,976	74	553	7,742
2000	122,827	8,422,237	206	1,565	21,910
2001	84,079	3,555,138	113	924	12,936
2002	88,458	6,937,584	172	1,490	20,860
2003	85,943	4,918,088	152	1,406	19,684
2004	77,534	6,790,692	96	662	9,268
2005	66,552	8,686,753	97	794	11,116
2006	96,385	9,873,745	208	1,920	26,880
2007	85,822	9,321,326	185	1,947	27,258
2008	80,094	5,254,109	171	1,781	24,934
2009	78,792	5,921,786	71	680	9,520
2010	71,971	3,422,724	80	759	10,626
2011	74,126	8,711,367	147	1,678	23,492
2012	67,774	9,326,238	170	1,677	23,478
2013	47,579	4,319,546	127	1,215	14,010
2014	63,212	3,595,613	105	1,023	14,322
2015	68,151	10,125,149	153	1,688	23,632
'88 - '15 Average	94,600	5,581,359	105	944	13,110
'06 - '15 Average	73,391	6,987,160	142	1,437	19,815

Table 1. Years highlighted in gold are the top 3 years in terms of acres burned. Years highlighted in gray are the bottom 3 years in terms of acres burned.

2015 Statistics

The number of acres burned and associated IMET missions have been on the rise since the mid 1990's. The chart below shows the upward trend in the last 20 years.

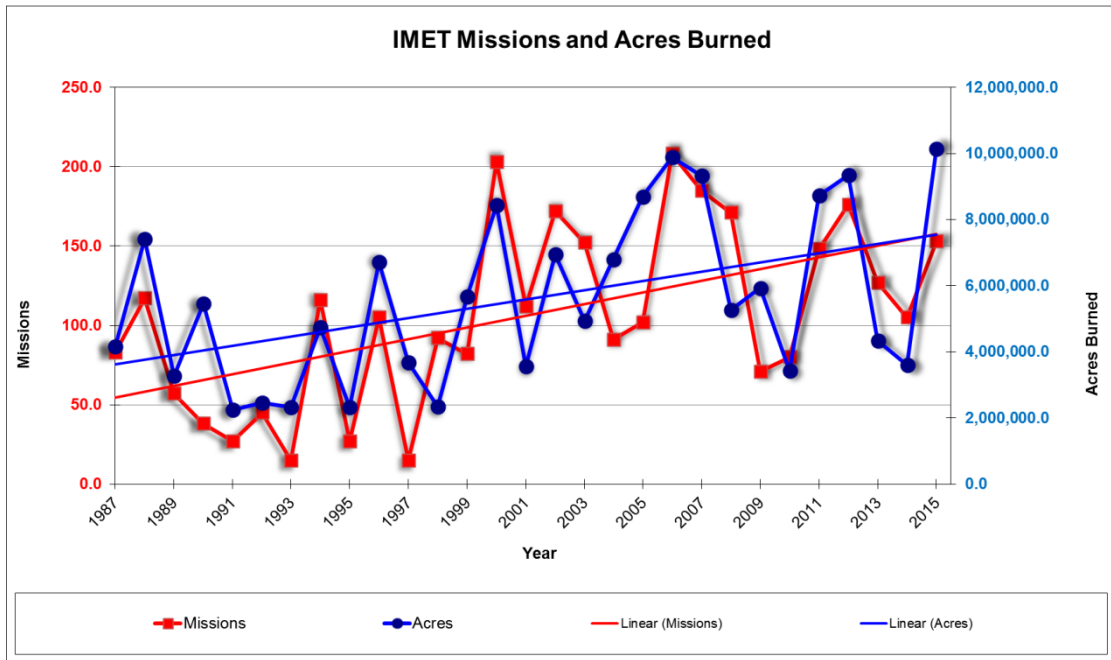


Chart 1. IMET missions and acres burned from 1987 through 2015.

In 2015, IMET missions were above average, after a very slow start.

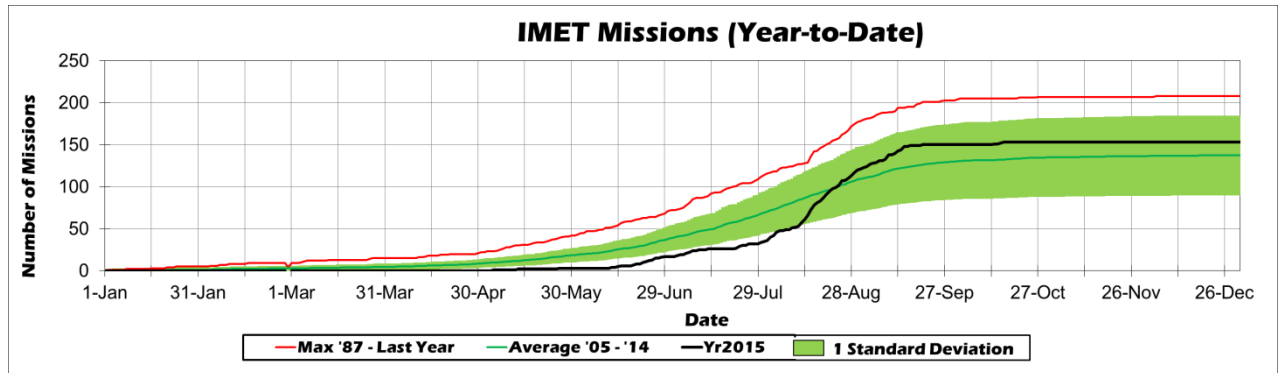


Chart 2. Cumulative IMET missions for 2015.

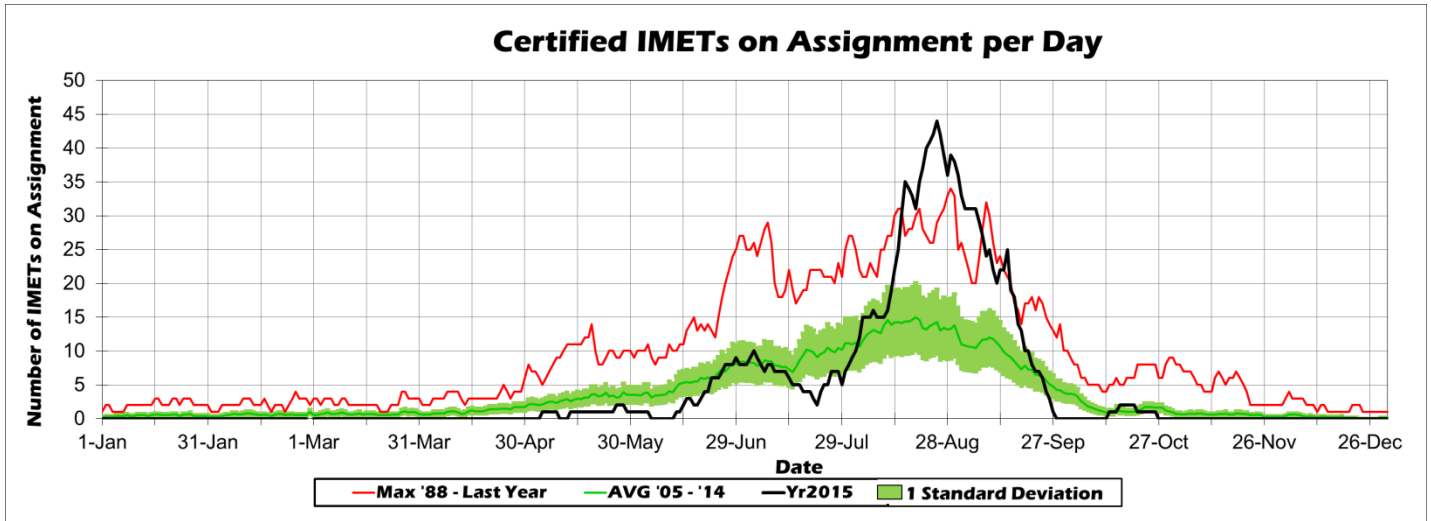


Chart 3. Number of IMETs on assignment each day of 2015.

IMET response time is very important to NWS IMET program users. They prefer that the NWS provide IMETs from close-by and within 24 hours of the request for services. This matches expectations of their own incident overhead personnel. The NWS is meeting or exceeding wildland fire agencies' requirement in both distance and time.

Average Distance From IMET Office to Fire	<i>783 miles</i>
Median Distance From IMET Office to Fire	<i>419 miles</i>

Table 2. Average and median distance from an IMET's office to an incident in 2015.

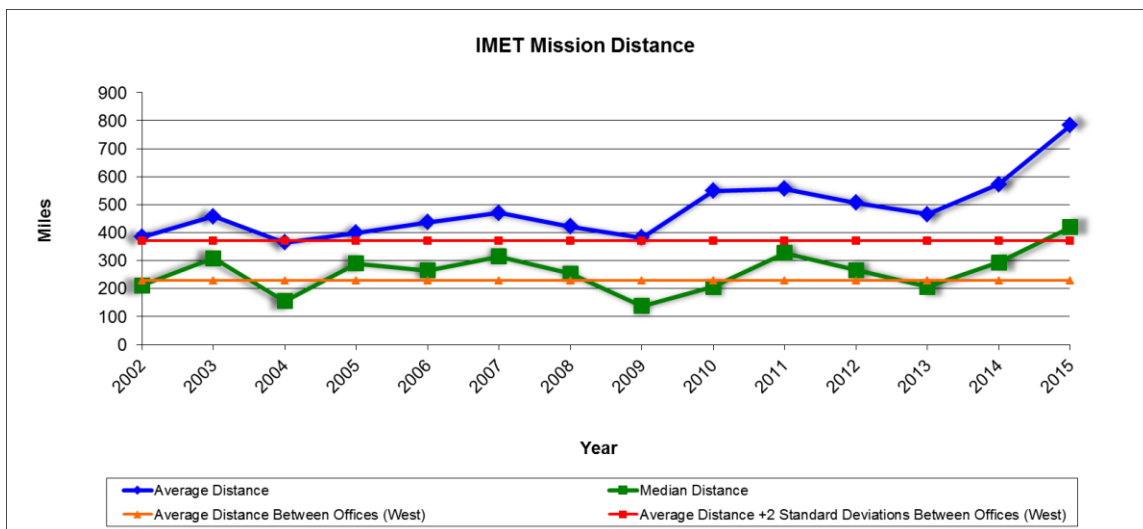


Chart 4. Average and Median Distance from IMET's office to incident since 2002.

Average Time For IMET Dispatch	<i>15.9 hours</i>
Median Time for IMET Dispatch	<i>10.7 hours</i>
Note: The dispatch times for swap outs are defaulted to “0” hours because there is no wait time on the part of the incident team since an IMET is already on site.	

Table 3. 2015 Average and Median time between IMET request and IMET arrival on site.

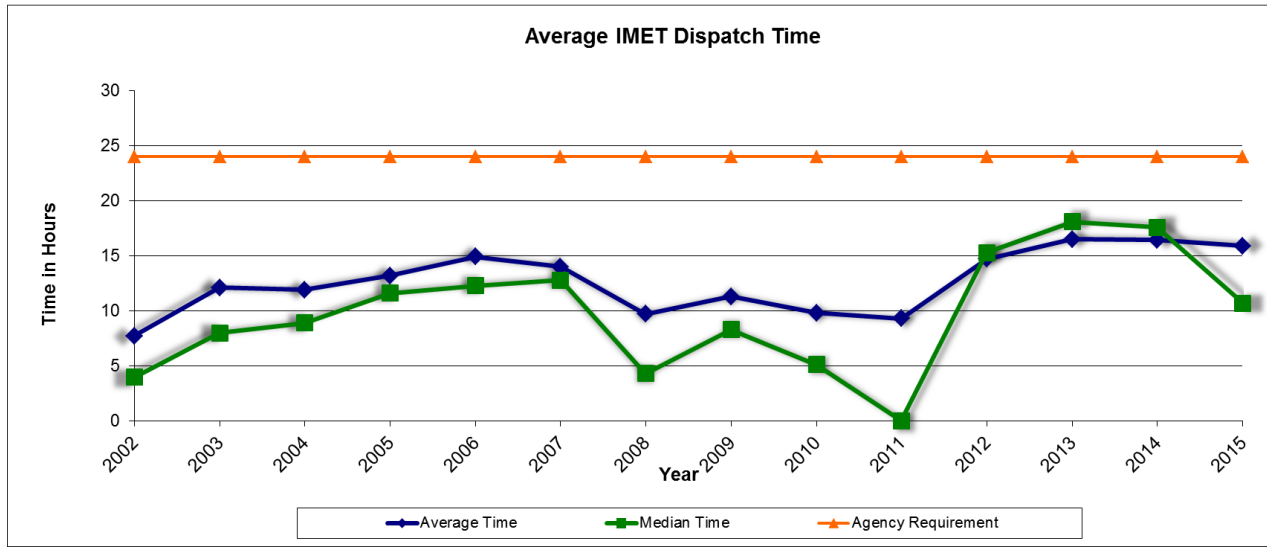


Chart 5. Average and median IMET dispatch times since 2002.

2015 Statistics		Notes
Unique IMETs Dispatched	70	Out of a total of 80 IMETs in the program.
Average Number of Dispatches per Dispatched IMET	2	
Average Number of Days per Dispatch	24	
Percentage of Dispatch Requests Filled	100%	Every request that was received by the National Fire Weather Operations Coordinator (NFWOC) in Boise was filled.
Number of Trainees Completing Training	9	Pacific Region: 1 (recertified) Western Region: 4 (1 recertified) Central Region: 2 Southern Region: 1 (1 recertified) Eastern Region: 1 (1 recertified)

Table 4. Dispatch numbers and days per IMET. Also percentage of requests filled and number of trainees certified in 2015.

The majority of IMETs dispatched in 2015 were from the Western Region.

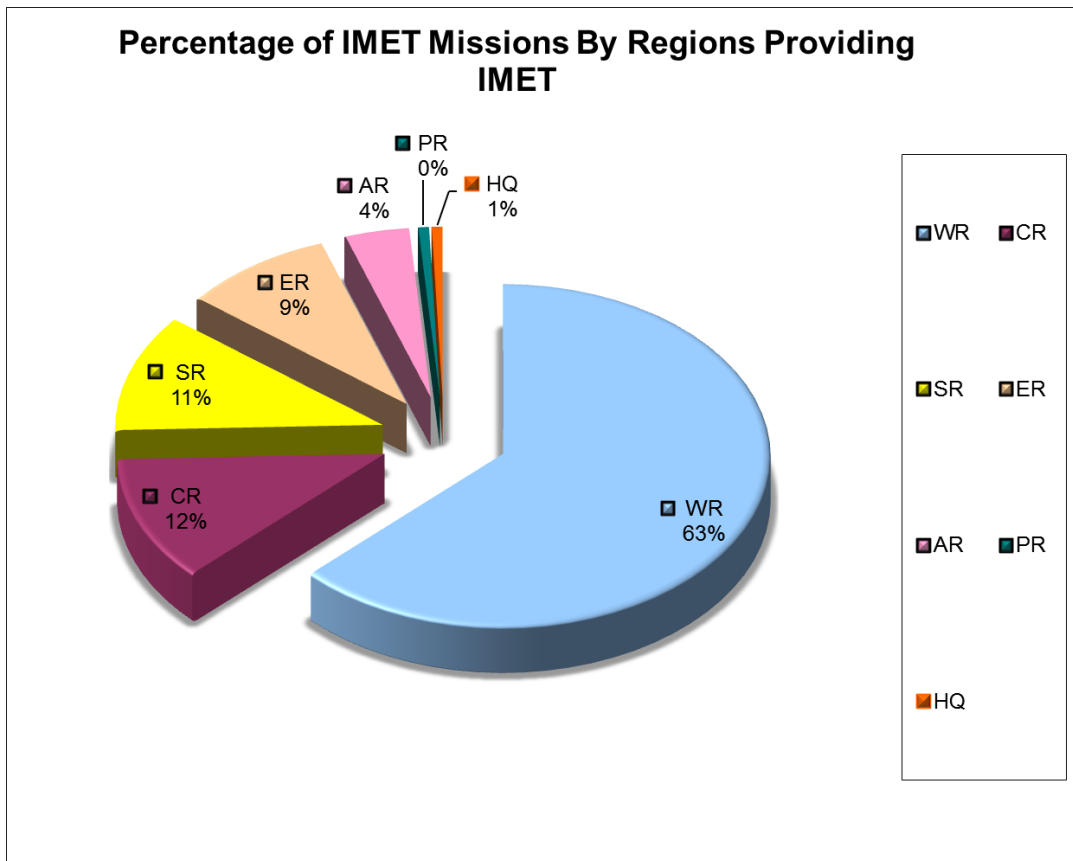


Chart 6. Percentage of IMETs dispatched per NWS Region for 2015.

The majority of incidents over the previous 10 years have been in Western Region.

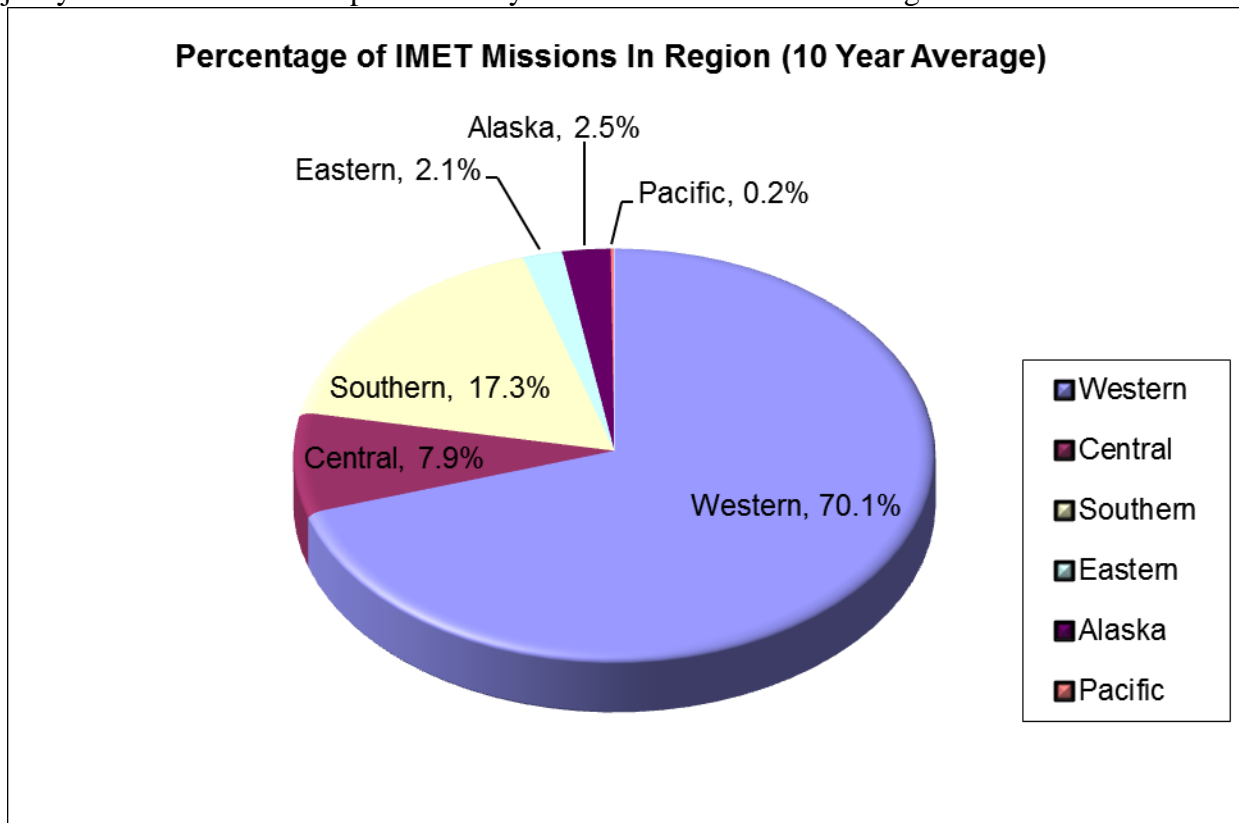


Chart 7. Ten year average percentage of IMET dispatches per NWS Region.

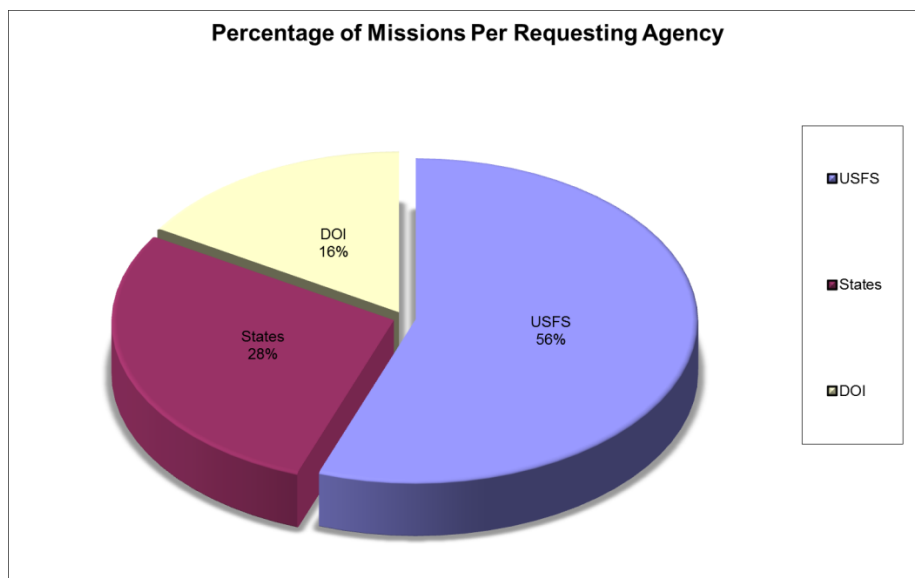


Chart 8. Percentage of total 2015 dispatch requests per agency.

While support for incidents mainly comes from within the same NWS region, there is cooperation between the regions with mutual support. Table 5 shows the within region support and the support external to each region for 2015.

Region	Percentage of Incidents Within Region Covered By Own IMETs	Actual Number	Percentage of Incidents Where IMETs Sent To Another Region to Cover	Actual Number
Western	70%	93 of 139	6%	3
Central	0%	0 of 0	35%	18
Southern	100%	3 of 3	27%	14
Eastern	100%	2 of 2	23%	12
Alaska	33%	3 of 9	6%	3
Pacific	0%	0 of 0	2%	1
NWS HQ	--	--	2%	1

Table 5. IMET support within regions and external to regions for 2015.

Each region of the United States is unique in its fire seasons. These differences are dependent on the fuels available and the climate. The peak fire season times are listed in Table 6 for each NWS region.

Western Region	<i>15 Jun – 15 Sep</i>
Central Region	<i>1 Jun – 15 Sep</i>
Southern Region	<i>1 May – 15 Jul</i>
Eastern Region	<i>1 Jun – 31 Jul, 15 Oct – 15 Nov</i>
Alaska Region	<i>25 May – 15 Aug</i>
Pacific Region	<i>None</i>
Nationally	<i>1 May – 30 Sep</i>

Table 6. Peak fire seasons for each NWS Region.

2015 National Red Flag Warning Verification

NWS offices nationwide issue Red Flag Warnings (RFW) for expected severe fire weather conditions. Table 7 summarizes the verification statistics for 2014 for red flag warnings.

Region	POD	FAR	CSI	Lead Time (hrs)	Number RFWs Issued	Spot Forecasts
Western Region	0.92	0.24	0.71	19.11	1,042	9,801
Central Region	0.92	0.16	0.78	12.74	3,261	4,045
Eastern Region	0.86	0.17	0.73	7.52	793	1,822
Southern Region	0.84	0.20	0.70	11.73	1,236	5,309
Alaska Region	1.00	0.27	0.73	13.36	134	1,100
Pacific Region	1.00	0.00	1.00	0.00	7	57
National	0.90	0.18	0.75	12.78	6,473	22,134

Table 7. POD = Probability of Detection; FAR = False Alarm Rate; CSI = Critical Success Index.

The national performance standard for 2015 was:

POD	0.89
Lead Time	10.55 hours

Table 8. 2015 national performance standards.

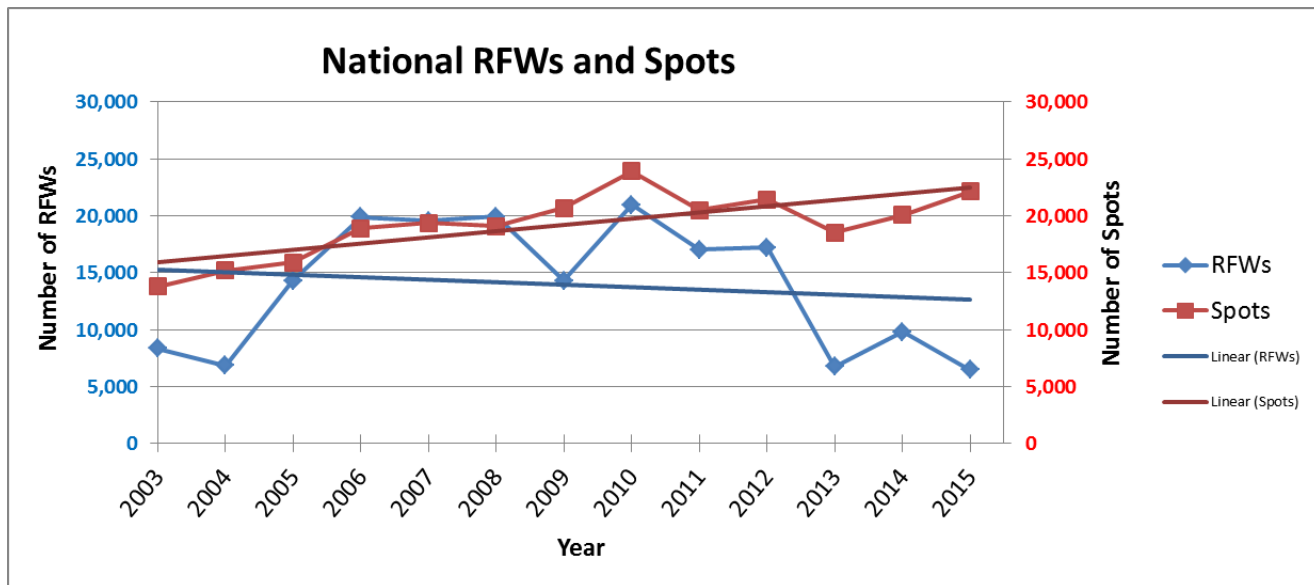


Chart 8. Number of Red Flag Warnings and Spot forecasts issued annually by the NWS since 2003.

The following are the red flag warning national performance standards for the next 5 years:

Year	POD	Lead Time (hours)
2016	<i>0.89</i>	<i>10.55</i>
2017	<i>0.90</i>	<i>10.60</i>
2018	<i>0.90</i>	<i>10.60</i>
2019	<i>0.91</i>	<i>10.65</i>
2020	<i>0.91</i>	<i>10.65</i>

Table 10. NWS fire weather program national performance standards for the next 5 years for red flag warnings.

NWS IMETs utilize specialized equipment to provide their support at incidents called “All Hazard Meteorological Response System” (AMRS). This equipment allows the IMET to set up a virtual Weather Forecast Office (WFO) remotely, including capability to gather and interpret model data, satellite and radar data, upper air radiosonde and surface observations. It also allows for an in-depth analysis of this data to support provision of forecasts, watches and warnings on site at an incident. The NWS has 70 AMRS located at WFOs across the nation, mainly in areas where wildland fire is a threat. Some stations have more than one unit reflecting those areas that are most prone to a wildfire threat and have multiple IMETs on site to deploy to these incidents. The AMRS locations (and the IMETs that use them) are shown below in figure 1.



AMRS Locations 2015



Figure 1. Home location of NWS All Hazard Meteorological Response Systems (AMRS) and their associated IMETs.