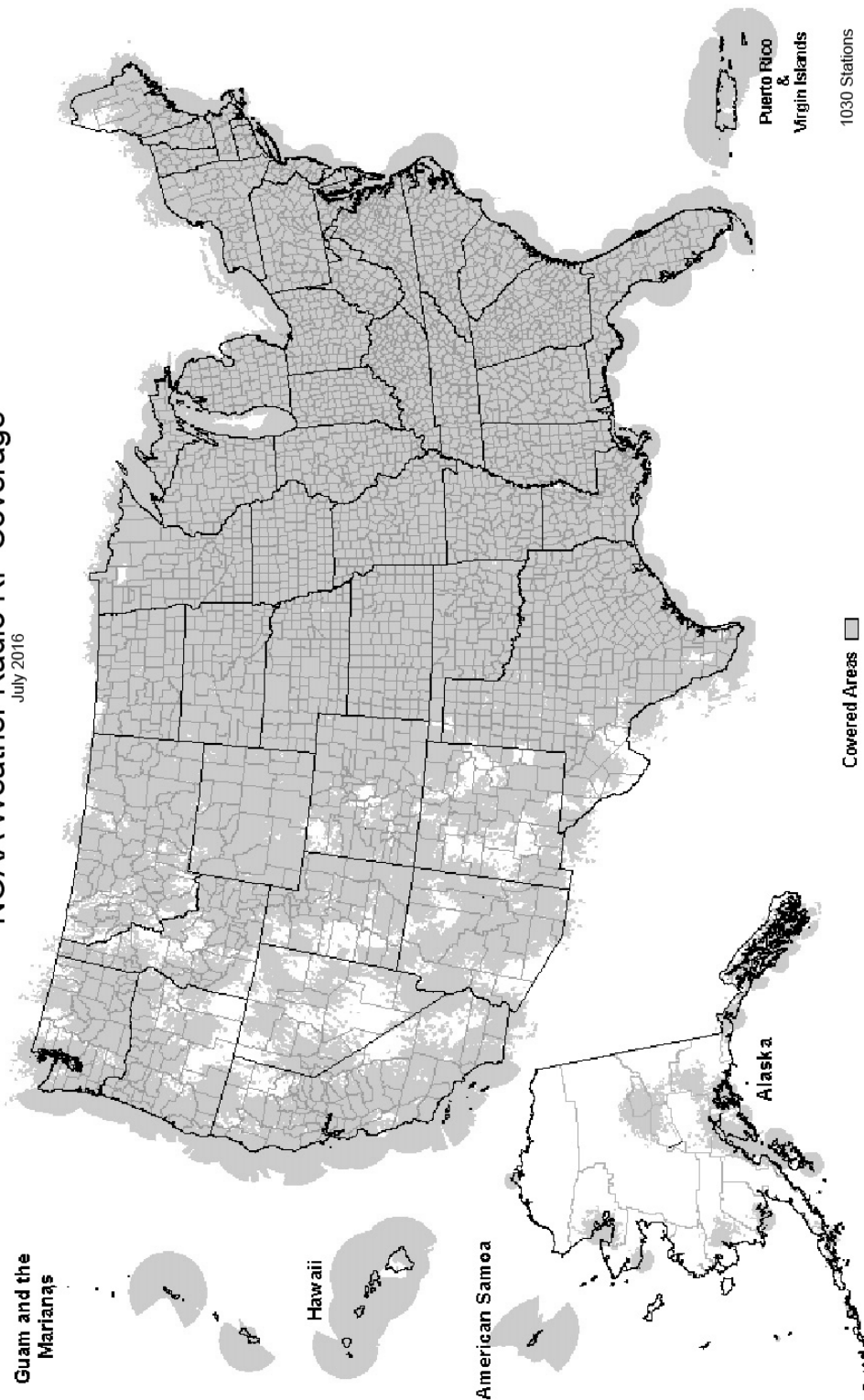
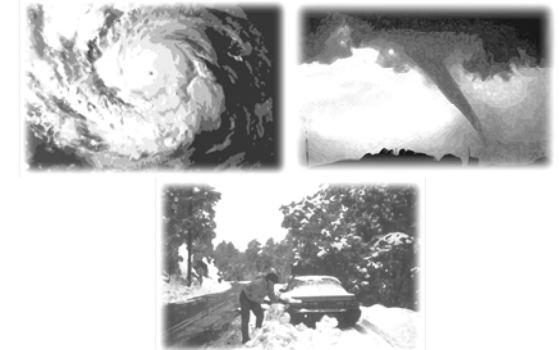


NOAA Weather Radio RF Coverage
July 2016



NOAA/PA 94062
Rev July 2016



**The Voice of NOAA's
National Weather Service**

< Over 1000 Transmitters >

Broadcasting Continuous
Weather Information on the
Following Frequencies:

- 162.400 MHz
- 162.425 MHz
- 162.450 MHz
- 162.475 MHz
- 162.500 MHz
- 162.525 MHz
- 162.550 MHz

U.S. Department of Commerce
National Oceanic and Atmospheric Administration
National Weather Service

<http://www.weather.gov/nwr/>

NOAA WEATHER RADIO

The Voice of NOAA's National Weather Service

<http://www.weather.gov/nwr>

NOAA Weather Radio is a service of the National Oceanic and Atmospheric Administration (NOAA) of the U.S. Department of Commerce. As the "voice of the National Weather Service," it provides continuous broadcasts (24 hours a day) of the latest weather information from local National Weather Service offices. Weather messages are repeated every 4 to 6 minutes and are routinely updated every 1 to 6 hours or more frequently in rapidly changing local weather or if a nearby natural hazardous or manmade condition exists.



The regular broadcasts are specifically tailored to weather information needs of the people within the service area of the transmitter. For example, in addition to general weather information, stations in coastal areas provide information of interest to mariners. Other specialized information, such as hydrological forecasts and other climate data may be broadcast.

During severe weather, National Weather Service

forecasters can interrupt the routine weather broadcasts and insert special warning messages concerning imminent threats to life and property. The forecaster can also add special signals to warnings that trigger "alerting" features of specially equipped receivers. In the simplest case, this signal activates audible or visual alarms, indicating that an emergency condition exists within the broadcast areas of the station being monitored, and alerts the listener to turn up the volume and stay tuned for more information. More sophisticated receivers are automatically turned on and set to an audible volume when an alert is received.

In the most sophisticated alerting system, NOAA Weather Radio Specific Area Message Encoding (SAME), digital coding is employed to activate only those special receivers programmed for specific emergency conditions in specific area, typically a county. SAME can activate specially equipped radio and cable television receivers and provide a short text message that identifies the location and type of emergency. SAME is the primary activator for the FCC Emergency Alert System (EAS).

To program NWR SAME receivers with the proper county(s) and marine area(s) of choice, you need to know the 6-digit SAME code number(s) for that county(s). Once you have your code number(s), follow the manufacturer's directions for programming your NWR SAME receiver. You can obtain your SAME code numbers by dialing:

888-NWR-SAME (888-697-7263) – Voice & TTY/TTD Accessible

Under a January 1975 White House policy statement, NOAA Weather Radio was designated the sole Government-operated radio system to provide direct warning into private homes for both

San Juan	162.400
RHODE ISLAND	
Providence	162.400
SOUTH CAROLINA	
Aiken	162.450
Aynor	162.400
Barnwell	162.500
Beaufort	162.450
Charleston	162.550
Cheraw	162.450
Columbia	162.400
Cross	162.475
Florence	162.550
Georgetown	162.500
Greenville	162.550
Jasper County	162.400
Kirksey	162.425
Orangeburg	162.525
Rock Hill	162.425
Sumter	162.425

SOUTH DAKOTA	
Aberdeen	162.475
Arlington	162.525
Faith	162.475
Firesteel	162.425
Hot Springs	162.425
Lead	162.525
Lowry	162.500
Mitchell	162.450
Philip	162.450
Pickstown	162.425
Pierre	162.400
Porcupine	162.500
Rapid City	162.550
Reliance	162.525
Sioux Falls	162.400
South Shore	162.425
Wessington	162.550
White River	162.550

TENNESSEE	
Bristol	162.550
Centerville	162.450
Chattanooga	162.550
Clarksville	162.500
Clifton	162.500
Cookeville	162.400
Dyersburg	162.500
Hickman	162.500
Jackson	162.550
Knoxville	162.475
La Follette	162.450
Lafayette	162.525
Lawrenceburg	162.425
Lobelville	162.525
Memphis	162.475
Nashville	162.550
Shelbyville	162.475
Spencer	162.450
Vale	162.450
Waverly	162.400
Winchester	162.525

TEXAS	
Abilene	162.400
Alpine	162.550
Amarillo	162.550
Austin	162.400
Bay City	162.425
Beaumont	162.475

Big Spring	162.475
Borger	162.400
Brownsville	162.550
Bryan	162.550
Burkeville	162.425
Carrizo Springs	162.550
Center	162.525
Childress	162.525
Cisco	162.500
Coleman	162.475
Corpus Christi	162.550
Corsicana	162.525
Cumby	162.500
Dallas	162.400
Del Rio	162.400
D'Hanis	162.525
Dickens	162.500
Dilley	162.500
El Paso	162.475
El Paso Spanish	162.550
Fort Worth	162.550
Galveston	162.550
Gilmer	162.425
Gonzales	162.525
Guadalupe Mt Nat'l. Park	162.525
Harlingen Spanish	162.450
Junction	162.475
Kerrville	162.450
La Grange	162.500
Laredo	162.550
Llano	162.425
Lubbock	162.400
Lufkin	162.550
Marietta	162.525
Miami	162.450
Midland/Odessa	162.400
Milano	162.525
Mineral Wells	162.525
Muenster	162.425
New Taiton	162.450
Onalaska	162.500
Ozona	162.500
Palestine	162.450
Paris	162.550
Pecos	162.450
Perryton	162.475
Pharr	162.400
Pharr Spanish	162.475
Plainview	162.450
Port O'Connor	162.475
Richland Springs	162.525
Richmond	162.475
Rio Grande City	162.425
Riviera	162.525
San Angelo	162.550
San Antonio	162.550
Seguin	162.475
Seminole	162.425
Sherman	162.475
Stephenville	162.450
Summerfield	162.500
Sweetwater	162.425
Texarkana	162.550
Three Rivers	162.450
Throckmorton	162.425
Tomball	162.400
Tyler	162.475
Uvalde	162.425
Victoria	162.400
Waco	162.475
Wichita Falls	162.475

UTAH	
Bear Lake	162.500
Castle Dale	162.500
Coalville/ Park City	162.475
Escalante	162.425
Lake Powell	162.550
Logan	162.400
Manti	162.425
Milford/Cedar City	162.400
Moab	162.475
Monticello	162.450
Salt Lake City	162.550
St. George	162.475
Tabiona	162.550
Tooele (South Mountain)	162.450
Tooele (Vernon Hills)	162.525
Vernal	162.400
Wendover	162.475

WISCONSIN	
Ashland	162.525
Baraboo	162.450
Black River Falls	162.500
Coloma	162.400
Crandon	162.450
Dubuque	162.400
Fond Du Lac	162.500
Green Bay	162.550
Gresham	162.500
Janesville	162.425
Ladysmith	162.550
Madison	162.550
Menomonie	162.400
Milwaukee	162.400
New London	162.525
Park Falls	162.500
Prairie Du Chien	162.500
Racine	162.450
Rhineland	162.400
Richland Center	162.475
Sheboygan	162.525
Sister Bay	162.425
Spooner	162.475
Tomah	162.525
Wausau	162.475
Wausaukee	162.400
Winona	162.425
Withee	162.425

VERMONT	
Burlington	162.400
Castleton	162.500
Marlboro	162.425
St. Johnsbury	162.425
Windsor	162.475

VIRGINIA	
Accomack	162.525
Covesville	162.450
Fredericksburg	162.425
Heathsville	162.400
Lynchburg	162.550
Manassas	162.550
Norfolk	162.550
Richlands	162.425
Richmond	162.475
Roanoke	162.475
Sand Mtn	162.450
South Boston	162.525

WASHINGTON	
Astoria	162.400
Capitol Peak	162.475
Cle Elum	162.400
Davis Peak	162.525
Dayton	162.525
Forks	162.425
H Street - Blaine Area	162.525
Neah Bay	162.550
Okanogan	162.525
Plymouth	162.425
Puget Sound Marine	162.425
Randle	162.425
Richland	162.450
Seattle	162.550
Spokane	162.400
Wenatchee	162.475
Yakima	162.550

WEST VIRGINIA	
Backbone Mountain	162.450

The National Weather Service requests your assistance in reporting any outages of NOAA Weather Broadcast Stations.

Please use our Toll Free Number (888) 697-7263 or send an Email to nwroutage@noaa.gov to report the outage.

Crocker	162.500	Ord.....	162.525
Doniphan	162.450	Oshkosh	162.525
El Dorado Springs.....	162.475	Scottsbluff.....	162.475
Fredericktown	162.500	Shubert	162.500
Gainesville	162.425	Sidney	162.500
Hannibal.....	162.475	Superior.....	162.525
Hermitage	162.450	Trenton	162.500
Jamestown	162.425	Valentine.....	162.450
Joplin	162.550	Yankton	162.500
Kansas City.....	162.550		
La Plata.....	162.525		
Lancaster	162.550		
Maryville.....	162.425		
Medill	162.450		
Neosho	162.450		
Piedmont.....	162.425		
Springfield.....	162.400		
St. Louis.....	162.550		
Summersville	162.475		
Trenton	162.500		
Wardell.....	162.525		
West Plains.....	162.525		

MONTANA			
Baker	162.550		
Belgian Hill.....	162.500		
Billings	162.550		
Bozeman	162.500		
Broadus	162.425		
Browning	162.525		
Butte	162.550		
Circle	162.550		
Dillon	162.475		
Ekalaka.....	162.475		
Forsyth.....	162.525		
Glasgow.....	162.400		
Glendive.....	162.475		
Glentana	162.525		
Great Falls	162.550		
Hardin	162.450		
Havre	162.400		
Helena	162.400		
Jordan	162.500		
Kalispell	162.550		
Lewistown	162.500		
Livingston.....	162.525		
Malta	162.475		
Miles City	162.400		
Missoula.....	162.400		
Plentywood	162.475		
Poplar	162.425		
Ryegate	162.450		
Scobey.....	162.450		
Wibaux.....	162.500		
Winnett.....	162.400		

NEW HAMPSHIRE			
Clarksville.....	162.400		
Concord	162.400		
Deerfield	162.450		
Hanover	162.525		
Holderness.....	162.550		
Mt. Washington.....	162.500		
Pack Monadnock	162.525		

NEW JERSEY			
Atlantic City.....	162.400		
Hardyston	162.500		
Southard	162.450		

NEW MEXICO			
Albuquerque	162.400		
Artesia	162.425		
Carlsbad	162.475		
Des Moines.....	162.550		
Farmington.....	162.475		
Hobbs	162.400		
Las Cruces.....	162.400		
Portales	162.475		
Roswell	162.450		
Ruidoso	162.550		
Santa Fe	162.550		
Silver City.....	162.425		

NEW YORK			
Albany	162.550		
Binghamton.....	162.475		
Buffalo	162.550		
Call Hill	162.425		
Cattaraugus	162.425		
Cooperstown.....	162.450		
Elmira	162.400		
Frewsburg.....	162.525		
Gore Mtn.....	162.450		
Highland	162.475		
Ithaca.....	162.500		
Lyons	162.475		
Middleville	162.425		
Mt. Washington.....	162.450		
Mullen	162.425		
Norfolk	162.550		
North Platte.....	162.550		
Omaha	162.400		

Spencerport	162.525		
Stamford.....	162.400		
Syracuse.....	162.550		
Walton	162.425		
Watertown	162.475		
White Hill	162.525		

NORTH CAROLINA			
Asheville	162.400		
Buck Mountain.....	162.500		
Cape Hatteras	162.475		
Chapel Hill	162.550		
Charlotte	162.475		
Ellerbe	162.400		
Garner	162.450		
Henderson	162.500		
Linville	162.450		
Mamie.....	162.425		
Margarettsville	162.450		
Mooreville	162.525		
Mount Jefferson.....	162.500		
New Bern	162.400		
Robbinsville	162.525		
Rocky Mount.....	162.475		
Saint Pauls	162.475		
Warsaw	162.425		
Windsor	162.525		
Winnabow.....	162.550		
Winston-Salem	162.400		

NORTH DAKOTA			
Bismarck	162.475		
Cavalier	162.450		
Dickinson.....	162.400		
Fargo	162.475		
Fort Ransom.....	162.525		
Grand Forks.....	162.475		
Jamestown	162.550		
Langdon	162.500		
Minot	162.400		
New Town.....	162.525		
Petersburg.....	162.400		
Rolla	162.475		
Scranton	162.525		
Sheyenne	162.525		
Steele	162.400		
Webster	162.425		
Williston	162.550		
Willow City.....	162.450		

NORTHERN MARIANA ISLANDS			
Saipan	162.550		

OHIO			
Akron	162.400		
Athens	162.425		
Bridgeport	162.525		
Carey	162.525		
Chillicothe	162.500		
Cleveland	162.550		
Columbus	162.550		
Dayton	162.475		
Grafton	162.500		
High Hill	162.475		
Lima	162.400		
Mansfield	162.450		
Marietta	162.400		
New Philadelphia	162.425		
Otway	162.525		
Sandusky	162.400		
Toledo	162.500		
Youngstown.....	162.500		

OKLAHOMA			
Altus	162.425		
Antlers	162.400		
Ardmore.....	162.525		
Atoka	162.500		
Bartlesville	162.425		
Broken Bow.....	162.450		
Chickasha.....	162.450		
Clinton	162.525		
Enid	162.475		
Grove	162.525		
Guymon.....	162.500		
Lawton	162.550		
McAlester	162.475		
Oklahoma City	162.400		
Oktaha	162.525		
Ponca City	162.450		
Stillwater	162.500		
Tulsa.....	162.550		
Wewoka.....	162.550		
Woodward	162.500		

OREGON			
Bend/Redmond.....	162.500		
Brookings	162.550		
Burns Butte.....	162.475		
Cape Blanco	162.425		
Carney Butte.....	162.475		
Coos Bay.....	162.400		
Eugene	162.400		
Florence	162.500		
Fossil.....	162.550		
Hepner	162.425		
John Day	162.500		
Klamath Falls.....	162.550		
Medford	162.400		
Mt Hebo	162.525		
Mt. Ashland	162.475		
Neahkahnie	162.425		
Newport	162.550		
Portland.....	162.550		
Reedsport.....	162.525		
Roseburg.....	162.550		
Salem	162.475		
Spout Springs.....	162.400		
The Dalles	162.400		
Tillamook	162.475		

PENNSYLVANIA			
Allentown.....	162.400		
Altoona	162.425		
Clearfield	162.550		
Coudersport.....	162.500		
Erie	162.400		
Harrisburg.....	162.550		
Hibernia Park.....	162.425		
Honesdale	162.450		
Huntingdon	162.525		
Johnstown	162.400		
Meadville	162.475		
Parker	162.425		
Philadelphia.....	162.475		
Pittsburgh	162.550		
Reynoldsville	162.500		
State College.....	162.475		
Towanda.....	162.525		
Warren	162.450		
Wellsboro	162.475		
Wilkes-Barre.....	162.550		
Williamsport.....	162.400		

PUERTO RICO			
Maricao.....	162.550		

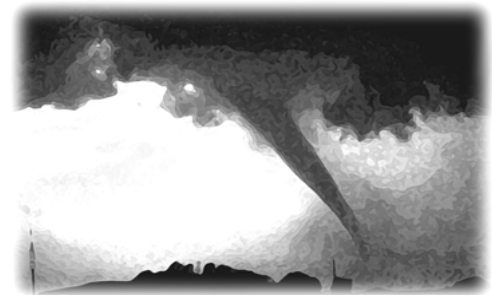
natural disasters and nuclear attack. This concept has been expanded to include warnings for all hazardous conditions that pose a threat to life and safety, both at a local and national level. As a result, NOAA Weather Radio is being better integrated with other National Weather Service systems to provide state and local emergency managers and other warning providers better access to local weather forecast offices, allowing hazard warnings of all types to be broadcast on NOAA Weather Radio within seconds

NOAA Weather Radio currently broadcasts from 1030 stations in fifty states, Puerto Rico, the U.S. Virgin Islands, American Samoa, Guam, and Saipan on seven frequencies in the VHF band, ranging from 162.400 to 162.550 megahertz (MHz). These frequencies are outside the normal AM or FM broadcast bands.

Special radios that receive only NOAA Weather Radio, both with and without special alerting features, are available from numerous manufacturers. In addition, other manufacturers are including NWR capability in a variety of receivers. NOAA Weather Radio capability is currently available on automobile, aircraft, marine, citizens band, and standard AM/FM radios as well as communications receivers, transceivers, scanners, and cable TV.

By nature and design, NOAA Weather Radio coverage is limited to an area within 40 miles of the transmitter. The quality of reception is dictated by transmitter distance, local terrain, and the quality and location of the receiver. In general, those using a high quality receiver on flat terrain or at sea can expect reliable reception beyond 40 miles. Those with standard receivers, surrounded by large buildings in cities and those in mountain valleys may experience little or no reception at considerably less than 40 miles. If possible, a receiver should be tested in the location where it will be used prior to purchase.

NOAA Weather Radio is directly available to a large portion of the U.S. population. The National Weather Service is currently engaged in a program to increase coverage to at least 95 percent of the population.



If you have a question regarding the technical aspects of NOAA Weather Radio such as transmitter location, reception, and characteristics or if you are interested in becoming a partner with the National Weather Service to identify or provide local funding and/or facilities for the installation of a NOAA Weather Radio transmitter, please contact your local National Weather Service Office or send a letter to:

National Weather Service
 Attn: Dissemination Systems Branch, W/OPS17
 1325 East-West Highway
 Silver Spring, MD 20910

The following is a listing of operational stations by state. For specific coverage information for your local area please visit our website at:

<http://www.weather.gov/nwr/>

ALABAMA

Anniston 162.475
 Arab..... 162.525
 Auburn 162.525
 Birmingham 162.550
 Brewton 162.475
 Columbus 162.400
 Cullman 162.450
 Demopolis 162.475
 Dozier 162.550
 Florence 162.475
 Greenville 162.425
 Henagar 162.500
 Huntsville 162.400
 Jackson 162.500
 Louisville 162.475
 Mobile 162.550
 Montgomery 162.400
 Oneonta 162.425
 Selma 162.450
 Tuscaloosa 162.400
 Winfield 162.525

ALASKA

Althorp Peak 162.425
 Anchorage 162.550
 Barrow 162.550
 Bede Mountain 162.450
 Bethel 162.550
 Cape Fanshaw 162.425
 Cape Gull 162.500
 Cape Hinchinbrook 162.525
 Cold Bay 162.425
 Cordova 162.400
 Craig 162.475
 Dillingham 162.500
 Duke Island 162.450
 East Point 162.500
 Fairbanks 162.550
 Glennallen 162.550
 Gravina Island 162.525
 Haines 162.400
 Homer 162.400
 Juneau 162.550
 Ketchikan 162.550
 Kodiak 162.550
 Kotzebue 162.550
 Manleyville 162.500
 Marmot Island 162.500
 Mt. McArthur 162.525
 Mt. Robert Barron 162.450
 Nenana 162.400
 Niniilchik 162.550
 Nome 162.550
 Pillar Mtn. 162.525
 Point Pigot 162.450
 Potato Point 162.425
 Raspberry Island 162.425
 Rugged Island 162.425
 Saint Paul Island 162.525
 Sand Point 162.550
 Seward 162.550
 Sitka 162.550
 Sitkinak Dome 162.450
 Soldotna 162.475

Sukkwan Island 162.425
 Tuklung Mtn. 162.425
 Unalaska 162.550
 Valdez 162.550
 Wasilla 162.400
 Whittier 162.475
 Wrangell 162.400
 Yakutat 162.400
 Zarembo Island 162.450

AMERICAN SAMOA

Mt. Ololete 162.550
 Pago Pago 162.400

ARIZONA

Flagstaff 162.400
 Globe 162.500
 Grand Canyon 162.475
 Greer 162.525
 Kingman 162.425
 Lake Havasu 162.400
 Nogales 162.500
 Payson Gila County N. 162.425
 Phoenix 162.550
 Prescott 162.525
 Safford 162.550
 Show Low 162.400
 Tucson 162.400
 Window Rock 162.550

ARKANSAS

Cherokee Village 162.475
 El Dorado 162.525
 Fayetteville 162.475
 Fort Smith 162.550
 Fountain Hill 162.475
 Gurdon 162.475
 Harrison 162.525
 High Peak 162.425
 Jonesboro 162.550
 Little Rock 162.550
 Marvell 162.525
 Mena 162.400
 Morrilton 162.475
 Mountain View 162.450
 Russell 162.400
 Russellville 162.525
 Springdale 162.400
 Star City 162.400
 Yellville 162.500

CALIFORNIA

Avalon 162.525
 Bakersfield 162.550
 Big Rock Ridge 162.500
 Bishop 162.425
 Coachella 162.400
 Coachella / Spanish 162.525
 Contra Costa County 162.425
 Conway Summit 162.525
 El Paso Mtns. 162.425
 Eureka 162.400
 Fresno 162.400
 Grass Valley 162.400
 Horse Mtn 162.450
 Los Angeles 162.550
 Malibu Marine 162.425
 Monterey 162.550
 Monterey Marine 162.450
 Point Arena 162.550
 Redding 162.550
 Sacramento 162.550
 San Diego 162.400

San Diego Marine 162.425
 San Francisco 162.400
 San Luis Obispo 162.550
 San Simeon 162.525
 Sandberg 162.425
 Santa Ana 162.450
 Santa Barbara 162.400
 Santa Barbara Marine 162.475
 Sonoma County 162.475
 Ukiah 162.525
 Victorville 162.500
 Yosemite 162.450
 Yuma 162.550

COLORADO

Alamosa 162.475
 Anton 162.425
 Bethune 162.525
 Boyero 162.450
 Canon City 162.500
 Colorado Springs 162.475
 Deer Trail 162.500
 Denver 162.550
 Dillon 162.400
 Durango 162.425
 Eagle 162.450
 Fort Collins/Ault 162.450
 Fort Morgan 162.525
 Fowler 162.425
 Franktown 162.450
 Glenwood Springs 162.500
 Grand Junction 162.550
 Greeley 162.400
 La Junta 162.500
 Lamar 162.525
 Mead/Longmont 162.475
 Montrose 162.450
 North Cottonwood 162.500
 Pueblo 162.400
 Springfield 162.400
 Steamboat Springs 162.525
 Sterling 162.400
 Walsenburg 162.450
 Wray 162.475

CONNECTICUT

Cornwall 162.500
 Hartford 162.475
 Meriden 162.400
 New London 162.550

DELAWARE

Lewes 162.550
 Salisbury 162.475

DISTRICT OF COLUMBIA

Washington DC 162.450

FLORIDA

Belle Glade 162.400
 Daytona Beach 162.400
 East Point 162.500
 Fort Myers 162.475
 Fort Pierce 162.425
 Gainesville 162.475
 Hialeah Spanish 162.500
 Inverness 162.400
 Jacksonville 162.550
 Key West 162.400
 Lake City 162.400
 Largo 162.450
 Melbourne 162.550
 Miami 162.550

Morrison 162.550
 Naples 162.525
 Ocala 162.525
 Orlando 162.475
 Palatka 162.425
 Panama City 162.550
 Pensacola 162.400
 Princeton 162.425
 Salem 162.425
 Sebring 162.500
 Sneads 162.425
 Sumterville 162.500
 Tallahassee 162.400
 Tampa Bay 162.550
 Tea Table Key 162.450
 Venice 162.400
 West Palm Beach 162.475
 Westville 162.450

GEORGIA

Americus 162.425
 Ashburn 162.450
 Athens 162.400
 Atlanta 162.550
 Augusta 162.550
 Baxley 162.525
 Blakely 162.525
 Blue Ridge 162.475
 Brasstown Bald 162.500
 Brunswick 162.425
 Buchanan 162.425
 Chatsworth 162.400
 Clayton 162.450
 Cleveland 162.525
 Eastman 162.400
 Eatonton 162.525
 Jesup 162.450
 La Grange 162.450
 Macon 162.475
 Metter 162.425
 Pelham 162.550
 Sandersville 162.450
 Summerville 162.450
 Thomaston 162.500
 Toccoa 162.425
 Valdosta 162.500
 Washington 162.500
 Waycross 162.475
 Waynesboro 162.425

GUAM

Guam 162.400

HAWAII

Hawaii Kai 162.450
 Kauai 162.400
 Kulani Cone 162.550
 Maui 162.400
 North Kohala 162.500
 Oahu 162.550
 South Point 162.550

IDAHO

Boise 162.550
 Bonners Ferry 162.500
 Burley 162.475
 Driggs 162.400
 Grangeville 162.450
 Lewiston 162.550
 McCall 162.475
 Orofino 162.500
 Payette 162.400
 Pocatello 162.550

Salmon 162.500
 Sedgwick Peak 162.425
 Sun Valley 162.450
 Twin Falls 162.400

ILLINOIS

Bloomington 162.525
 Champaign 162.550
 Chester 162.450
 Chicago 162.550
 Crescent City 162.500
 Crystal Lake 162.500
 DeKalb 162.550
 Dixon 162.525
 Freeport 162.450
 Galesburg 162.400
 Hillsboro 162.425
 Jacksonville 162.525
 Jerseyville 162.450
 Kankakee 162.525
 Lockport 162.425
 Macomb 162.500
 Marion 162.425
 McLeansboro 162.400
 Newton 162.450
 Odell 162.450
 Paris 162.525
 Peoria 162.475
 Plano 162.400
 Princeton 162.425
 Quad Cities 162.550
 Rockford 162.475
 Salem 162.475
 Shelbyville 162.500
 Springfield 162.400

INDIANA

Angola 162.425
 Bloomington 162.450
 Edwardsport 162.425
 Evansville 162.550
 Fort Wayne 162.550
 Georgia 162.500
 Hebron 162.450
 Indianapolis 162.550
 Marion 162.450
 Michigan City 162.500
 Monticello/Lafayette 162.475
 Muncie 162.425
 New Albany 162.475
 Newport 162.425
 North Webster 162.500
 Putnamville 162.400
 Richmond 162.500
 Seymour 162.525
 South Bend 162.400

IOWA

Burlington 162.525
 Carroll 162.425
 Cedar Rapids 162.475
 Decorah 162.525
 Delaware 162.450
 Denison 162.550
 Des Moines 162.550
 Essex 162.550
 Fairfield 162.400
 Forest City 162.500
 Fort Dodge 162.400
 Hancock/Pottawattam 162.525
 Iowa Falls 162.525
 Lake Rathbun 162.425
 Lenox 162.450

Maquoketa 162.425
 Marshalltown 162.500
 Milford 162.550
 Montezuma 162.450
 Ottumwa 162.500
 Ringsted 162.475
 Sarnoborn 162.525
 Sioux City 162.475
 St. Ansgar 162.450
 Storm Lake 162.450
 Van Wert 162.475
 Waterloo 162.550

KANSAS

Abilene 162.525
 Beaumont 162.500
 Belvidere 162.525
 Blue Rapids 162.425
 Chanute 162.400
 Concordia 162.550
 Dighton 162.525
 Dodge City 162.475
 Ellsworth 162.400
 Gem 162.400
 Great Bend 162.500
 Halls Summit 162.425
 Hays 162.450
 Kirwin 162.500
 Lenora 162.425
 Meade 162.425
 Parker 162.525
 Saint Joseph 162.400
 Sharon 162.400
 Topeka 162.475
 Tribune 162.550
 Ullyses 162.450
 Wichita 162.550

KENTUCKY

Ashland 162.550
 Beattyville 162.500
 Bowling Green 162.400
 Burkesville 162.475
 Campbellsville 162.525
 Covington 162.550
 East Madison County 162.525
 Edmonton 162.450
 Ekron 162.450
 Elizabethtown 162.550
 Frankfort 162.500
 Frenchburg 162.475
 Harlan 162.450
 Hazard 162.475
 Hopkinsville 162.450
 Horse Cave 162.500
 Irvine 162.475
 Jackson 162.425
 Lexington 162.400
 London 162.475
 Madison County 162.525
 Madisonville 162.525
 Manchester 162.400
 Mayfield 162.475
 Maysville 162.425
 McKee 162.450
 Moberly 162.525
 Monticello 162.425
 Morehead 162.400
 Mount Vernon 162.425
 Owenton 162.450
 Paintsville 162.525
 Phelps 162.500
 Pikeville 162.400

Pineville 162.525
 Somerset 162.550
 Stanton 162.550
 West Liberty 162.450
 West Madison County 162.525
 Whitesville 162.475
 Williamsburg 162.500

LOUISIANA

Alexandria 162.475
 Baton Rouge 162.400
 Bogalusa 162.525
 Buras 162.475
 Lafayette 162.550
 Lake Charles 162.400
 Monroe 162.550
 Morgan City 162.475
 Natchitoches 162.500
 New Orleans 162.550
 Shreveport 162.400

MAINE

Caribou 162.525
 Dresden 162.475
 Ellsworth 162.400
 Falmouth 162.550
 Frenchville 162.475
 Greenville 162.425
 Jonesboro Marine 162.450
 Maddybemps 162.425
 Milo 162.550
 Springfield 162.500
 Sugarloaf Mtn 162.450

MARYLAND

Baltimore 162.400
 Frostburg 162.425
 Hagerstown 162.475
 Sudlersville 162.500

MASSACHUSETTS

Boston 162.475
 Bourne/Hyannis 162.550
 Egremont 162.450
 Gloucester Marine 162.425
 Mt. Greylock 162.525
 Worcester 162.550

MICHIGAN

Adrian / Petersburg 162.450
 Alpena 162.550
 Bad Axe 162.525
 Copper Harbor 162.500
 Crystal Falls 162.475
 Detroit 162.550
 Escanaba 162.500
 Flint 162.475
 Gaylord 162.500
 Grand Marais 162.425
 Grand Rapids 162.550
 Hesperia 162.475
 Houghton 162.400
 Manistiquette 162.525
 Marenisco 162.550
 Marquette 162.550
 Mount Pleasant 162.525
 Munising 162.475
 Newberry 162.450
 Onondaga 162.400
 Petoskey 162.475
 Plainwell 162.475
 Sandusky 162.450
 Sault Ste Marie 162.550

MINNESOTA

Aitkin 162.450
 Appleton 162.550
 Bemidji 162.425
 Clearwater 162.500
 Coleraine 162.400
 Detroit Lakes 162.400
 Duluth 162.550
 Elephant Lake 162.450
 Ely 162.500
 Fergus Falls 162.500
 Finland 162.425
 Fulda 162.425
 Grand Marais 162.450
 Gun Flint Lake 162.525
 International Falls 162.550
 Jeffers 162.450
 Kensington 162.400
 LaCrescent 162.550
 Lake Bronson 162.525
 Leader 162.550
 Long Prairie 162.525
 Mankato 162.400
 Minneapolis/St. Paul 162.550
 New Ulm 162.525
 Norwood 162.425
 Olivia 162.400
 Park Rapids 162.475
 Pine City 162.425
 Red Wing 162.450
 Rochester 162.475
 Roosevelt 162.450
 Russell 162.500
 St. Cloud 162.400
 Thief River Falls 162.550
 Virginia 162.475
 Waubun 162.450
 Willmar 162.475

MISSISSIPPI

Aberdeen 162.450
 Ackerman 162.475
 Booneville 162.400
 Bude 162.550
 Carthage 162.500
 Gulfport 162.400
 Hattiesburg 162.475
 Inverness 162.425
 Jackson 162.400
 Leakesville 162.425
 Magee 162.525
 Meridian 162.550
 Oxford 162.550

MISSOURI

Alton 162.500
 Avilla 162.425
 Bellflower 162.450
 Bloomfield 162.400
 Bourbon 162.525
 Branson 162.550
 Camdenton 162.550
 Cameron 162.475
 Cape Girardeau 162.550
 Carrollton 162.450
 Cassville 162.500
 Clinton 162.500
 Columbia 162.400