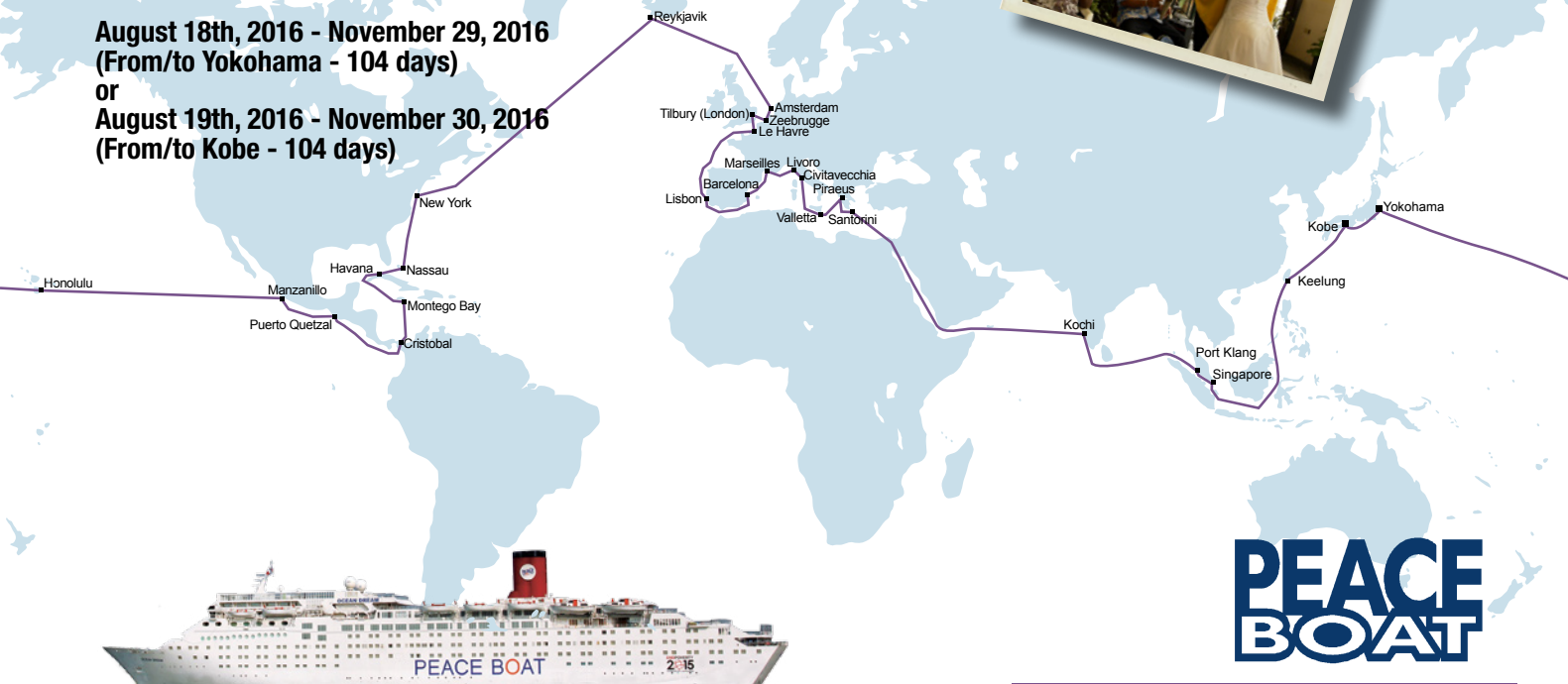


GLOBAL VOYAGE FOR PEACE

August 18th, 2016 - November 29, 2016
(From/to Yokohama - 104 days)

or
August 19th, 2016 - November 30, 2016
(From/to Kobe - 104 days)



Yokohama, Japan	August 18
Kobe, Japan	August 19
Keelung, Taiwan	August 22
Singapore	August 28
Port Klang, Malaysia	August 29, 2016
Kochi, India	September 3
Suez Canal	September 14
Santorini Island, Greece	September 16
Piraeus, Greece	September 17
Valletta, Malta	September 19
Civitavecchia, Italy	September 21
Livorno, Italy	September 22-23
Marseilles, France	September 24
Barcelona, Spain	September 25
Lisbon, Portugal	September 28
Le Havre, France	October 1-2
Tilbury (London), United Kingdom	October 3-4
Zeebrugge, Belgium	October 5
Amsterdam, the Netherlands	October 6
Aurora Belt visibility area	October 8 - 10
Reykjavik, Iceland	October 11-13
New York, United States	October 20-21
Nassau, the Bahamas	October 24
Havana, Cuba	October 26-27
Montego Bay, Jamaica	October 29
Cristobal, Panama	October 31-Nov 1
Panama Canal	November 2
Puerto Quetzal, Guatemala	November 4-5
Manzanillo, Mexico	November 8
Honolulu, USA	November 17-18
Yokohama, Japan	November 29
Kobe, Japan	November 30



Contact: participate@peaceboat.gr.jp • B1, 3-13-1 Takadanobaba, Shinjuku-ku, Tokyo, 169-0075, Japan • Tel: +81-3-3363-7561

www.peaceboat.org

GLOBAL VOYAGE FOR PEACE

August 18th, 2016 - November 29, 2016 (From/to Yokohama - 104 days)
or August 19th, 2016 - November 30, 2016 (From/to Kobe - 104 days)



CABIN TYPES AND VOYAGE FARES

	ROOM CLASS	BEDS	BED TYPE	WINDOW	FLOOR	FARE
Friendly Type (Shared cabins. Fare per person)	A Budget	4	Bunk beds	—	4	1,290,000 JPY
	B Economy	4	Bunk beds	—	5-7	1,490,000 JPY
	C Standard I	4	Bunk beds	□□	4-5	1,590,000 JPY
	D Standard II	4	Bunk beds	□□	6-7	1,690,000 JPY

	ROOM CLASS	BEDS	BED TYPE	WINDOW	FLOOR	FARE
Pair Type (Please apply in a pair. Fare per person)	E Economy	2	Twin beds	—	5-7	2,000,000 JPY
	F Standard I	2	Twin beds	□□	4-5	2,100,000 JPY
	G Standard II	2	Twin beds	□□	6-7	2,200,000 JPY
	H Balcony	2	Twin beds	□□	10	3,950,000 JPY

	ROOM CLASS	BEDS	BED TYPE	WINDOW	FLOOR	FARE
Semi-single Type (Shared cabins with simple partition. Fare per person)	I Economy	2	Twin beds	—	5-7	2,150,000 JPY
	J Standard I	2	Twin beds	□□	4-5	2,250,000 JPY
	K Standard II	2	Twin beds	□□	6-7	2,350,000 JPY

	ROOM CLASS	BEDS	BED TYPE	WINDOW	FLOOR	FARE
Single Type (Fare per person)	L Economy	1	Double	—	4	2,900,000 JPY
	M Standard I	1	Double	□□	5-7	3,000,000 JPY
	N Standard II	1	Double	□□	7	3,100,000 JPY

MEALS INCLUDED: 102 Breakfasts, 102 Lunches, 102 Dinners

- Professional tour escorts, a doctor and a nurse will be joining the entire duration of the voyage.
- The fares shown are for the entire voyage. Please consult with us if you wish to join for a partial voyage.
- All cabins are equipped with a shower and toilet. Pair Balcony (H) cabins are equipped with a bath tub.
- All cabins may be equipped with upper berths. For Friendly Economy (B), and Friendly Standard (C, D), reservations of lower berths maybe made at an additional fee (60,000 JPY). If a child under 13 years old is accompanying you, requests for a Friendly Type cabin cannot be accommodated.
- Single cabins (L/M/N) are equipped with separate twin beds, joined together to make a double bed.
- The differences in cabin types relate only to cabins. All meals and services are the same for all passengers.

OTHER COSTS

Port Charges: 50,400 JPY

Berthing and facility use fees charged by port authorities in each port of call.

Tip Charges: 52,000 JPY (500 JPY/day)

Onboard tips for crew members. Additional tipping not required onboard.

Visa Fees: Visa requirements differ according to nationality. Participants are themselves responsible for obtaining all necessary visas prior to embarkation.

NOTES

*The voyage schedule may be subject to change owing to circumstance such as weather and local conditions. *Some ports of call will be visited using tender boats. In this case, the ship will anchor off the coastline, and passengers will be brought to shore using tender boats. In the case of bad weather conditions, these tender boat operations may be canceled. *The Captain has the authority to change the itinerary and course of the ship if deemed necessary. Passenger Safety is of paramount importance, therefore any unforeseen acts of providence, deterioration of political situations or orders from local authorities will be taken into account, and the itinerary or schedule may be changed due to these factors. Japan Grace Co., Ltd. will do its utmost to inform passengers as early as possible of any changes made. In the case of emergencies, passengers may be notified after changes have been made. *Please kindly note that there will be no refunds made to passengers for changes made as a result of the above-mentioned circumstances. *Optional tours and programs in port (not included in the voyage fare) will be announced at a later day. *Minimum of 600 passengers required.



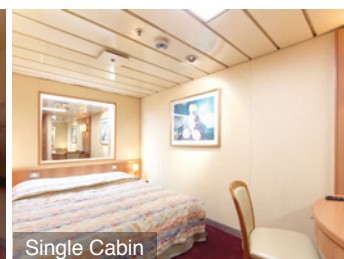
Friendly Cabin



Pair Cabin



Semi-single Cabin



Single Cabin



Reception



Starlight Lounge



Main Restaurant



Pool Deck

Summary of Terms and Conditions

NOTE: The following is a translation/summary of the original Japanese document. If a conflict in meaning between this document and the original shall arise, the original shall prevail.

The following terms and conditions stipulate the business terms and the account of the transaction pursuant to Japanese travel agency law article 12, clause 4 and article 12, clause 5. The following represents part of the terms and conditions of the contractual writing of this engagement.

A) CONTRACTUAL ENGAGEMENT TO PARTICIPATE IN A TRAVEL PROGRAM ON SALE TO THE GENERAL PUBLIC THROUGH PROMOTIONAL MEANS

The travel program is coordinated by the Peace Boat office, and planned and conducted by Japan Grace Co, Ltd. (herein after referred to as "the Company"). Those participating in this travel program will be agreeing to a contractual engagement to participate in a travel program on sale to the general public through promotional means (herein after referred to as the "Travel Contract") with the Company.

B) APPLICATION FOR THE TRAVEL PROGRAM

Official application forms made available from the Company must be filled in along with an initial application fee of 5% of the travel fee. Once the official application form, along with this fee has been received and acknowledged by the Company, the application procedure will be considered legitimate. The application fee will be subtracted from the total cost of the travel program.

C) ITEMS INCLUDED IN THE TRAVEL PROGRAM FEE

1. Cost of voyage as indicated in the travel itinerary. 2. Accommodation onboard (in cabin type stipulated in invoice) and onboard events (in part charged for). 3. Cost of main meals onboard as stipulated in itinerary. 4. Hand luggage transportation fees by ship. 5. Costs for tour escorts, company staff and Peace Boat staff whom will accompany participants during the voyage.

D) ITEMS NOT INCLUDED IN THE TRAVEL PROGRAM FEE

Any items which are not mentioned in Section C are not included in the travel program fee. Please find following a list of examples of costs which are not covered by the travel program fee:

- Optional tour programs fee, 2. Any extra costs that may be incurred by a change in the class of cabin, 3. Costs incurred by procedures deemed necessary for overseas travel (administrative fees for procedures deemed necessary for overseas travel, vaccination fees, visa application fees), 4. Tips for the ship, 5. Port charges, 6. Travel insurance, telephone bills, bar bills or any other personal expenses incurred, 7. Overweight baggage fee, 8. Transportation costs from your home to the port of embarkation and transportation costs from your port of disembarkation to your home, related accommodation and luggage transportation fees. 9. Fuel surcharge fee.

E) CANCELLATION FEES

Through payment of cancellation fees as indicated below, cancellation of the Travel Contract can be made at any time.

- Between 61-90 days prior to the departure date - 5% of travel costs
 - Between 31-60 days prior to the departure date - 10% of travel costs
 - Between 21-30 days prior to the departure date - 20% of travel costs
 - Between 3 -20 days prior to the departure date - 30% of travel costs
 - Between 1-2 days prior to the departure date - 50 % of travel costs
 - Cancellation after commencement of travel, or failing to participate with no notice 100% of travel costs
- This travel is via a chartered vessel, and thus for any reason no refund of travel costs can be made following the commencement of travel.

F) OTHERS

The Ministry of Foreign Affairs of Japan has issued overseas travel safety advisories for Kochi, Istanbul, Cristobal and Puerto Quetzal. For Port Said, Egypt, if political instability continues, the voyage might visit an alternative port. For other ports, the company has confirmed the safety of the ports through local travel agencies, tourism boards and shipping agencies, and the voyage will take place as scheduled. The contents of this pamphlet are the latest as of February 1, 2015.