



COMMUNITY PARTNERSHIPS AND RELATIONSHIPS

TOWSON UNIVERSITY

2015 Status Report

UNIVERSITY-COMMUNITY PARTNERSHIPS ARE CRITICAL TO TU'S MISSION AND CHARGE AS AN ANCHOR INSTITUTION.

TU stands out as one of the most community-engaged universities in the country. Our partnerships and relationships span across our teaching, student activities, athletics, research, and scholarship. These partnerships and relationships make everything we do better, relevant, and impactful.

Identified Partnerships as of July 2014: **97**

Identified Partnerships as of July 2015: **162**

This growth is a reflection of both new partnerships that have been launched over the past year and the university-wide effort to develop a culture of openness and sharing so that more faculty and staff recognize the value of their work and their partners by sharing their story.

WHAT ARE UNIVERSITY-COMMUNITY PARTNERSHIPS AND RELATIONSHIPS?

Partnerships and relationships at Towson University involve collaboration between TU and external organizations to reach common goals. They have significant outcomes and impacts for our neighbors across the state, region, and world, as well as TU.

*Though our partnerships and relationships are happening all over the region and the world, **96%** of them are directly making a difference for citizens in **Central Maryland.***

WHY UNIVERSITY-COMMUNITY PARTNERSHIPS MATTER

"Homelessness is a significant social problem in Baltimore. Working together to address the needs of homeless people matters because it teaches students that all people matter in society. It puts a real face on this vulnerable population that will stay with them as they grow as citizens and human service workers."

- **Cathy Breneman,**
Addressing Homelessness in Baltimore

"This partnership matters to TU because our entire mission, all of the work we do on campus, is wholly irrelevant if it stays on campus. We have to be engaged in the community or we will render ourselves obsolete. It matters to our students who are entering a world that is both increasingly multicultural and increasingly rife with inequality. It matters to the community because the community needs help from those who have the resources to provide it. TU has resources, we can make a difference, and so we must."

- **John McTague,**
Helping Revitalize and Maintain Public Community Spaces in East Baltimore

OUTCOMES OF PARTNERSHIPS AND RELATIONSHIPS

“Many people have a misunderstanding and misinformation about people with disabilities in their community, especially those with autism or intellectual disabilities. The Sprout Film Festival, with its films by and about people with disabilities, educates by focusing on authentic experiences of people from the disability community. One unexpected outcome was seeing the empowerment for the audience members with autism or intellectual disabilities when they were able to view films that starred people with their disabilities.”

– **Charlotte Exner,**
Sprout Film Festival

“Through clinical practice, the Dance Education students gain valuable experience in teaching and writing curriculum and lesson plans. In addition, they serve the Baltimore City community by offering free dance lessons to students at the Webster Kendrick Boys and Girls Club. This experience also informs my scholarship by advising me of what practices worked in a teaching curriculum designed around a book titled Shapesville.”



BOYS & GIRLS CLUB

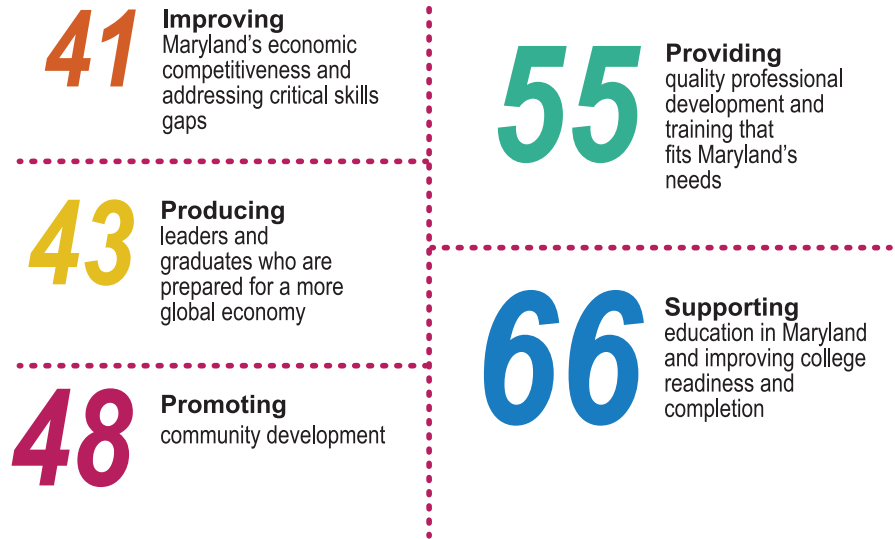
– **Sandra Perez,**
Methods for Teaching Dance

“This partnership uses the most skilled sports medicine professionals in Baltimore to connect student athletes with appropriate healthcare services so that they can ultimately succeed on and off the field. Furthermore, students in the medical fields have opportunities to interact and learn from respected professionals in the sports medicine field. This enhances the overall relationship between Towson University and the medical community in Baltimore.”

– **Nathan Wilder,**
Strategic Partnership in Medical Services and Education

IMPACTS

TU’s partnerships and relationships are interdisciplinary and cross many different program areas. This means that we make a difference in a variety of ways. Most common impacts include:



OUTCOMES

Partnerships and relationships led by TU’s faculty and staff touch teaching, research, and service. Our partnerships and relationships have far-reaching effects on our students, the community, and the faculty and staff leading them.





STUDENT LEARNING

Over the last year, approximately 9,000 Towson University students have been directly involved in TU's community partnerships and relationships. These students had a variety of experiences ranging from service-learning to community service. Outcomes include:

- ✓ Unlearning prejudices and learning how to understand and communicate social justice issues in nuanced and sophisticated ways
- ✓ Promoting awareness of the unique challenges facing homeless and underserved populations, serving as effective advocates on behalf of vulnerable populations, and developing and evaluating programs that benefit the homeless by reducing barriers to health care access and promoting optimum health
- ✓ Writing journals and creating art-integrated lesson plans and prototypes

SERVICE-LEARNING

Service-learning is a form of experiential learning in which students support projects in the community to supplement their learning in the classroom. Most faculty members leading these courses had positive feelings toward teaching service-learning courses and incorporating opportunities into more of their classes.

Approximately **9000**
students have been
directly involved in TU's
community partnerships
and relationships.

Approximately **30%**
of our partnerships
and relationships are
embedded within
service-learning courses.

STANDING WITH BALTIMORE

In April 2015, riots erupted in West Baltimore after the funeral of Freddie Gray, who died in police custody. The unrest left parts of Baltimore City in disarray, people in need of support, and communities in need of rebuilding. As an anchor institution, Towson University knows that our success is tied to the success of Baltimore City. We looked within the university to see what work we were already doing, what impacts the partnerships were having, and what could be scaled up and developed to make immediate and long-term differences in our city.



Students from the Anthropology by the Wire partnership work with residents in disadvantaged communities to tell their stories to bring funding to the neighborhoods, highlight cultural importance, and bring attention to the work of the community members.

86 ACTIVE PARTNERSHIPS WITH BALTIMORE CITY

These partnerships and relationships are making a difference in Baltimore City in many ways. Some examples include:

- ✓ **Revitalizing and Maintaining Public Community Spaces** – Students work with The 6th Branch, a military veteran-led organization that adopts neglected public spaces in East Baltimore and works to improve these spaces to be used by the community.
- ✓ **TU College Readiness Workshops** – These workshops bring middle school students from Baltimore City to TU to meet with students and faculty, attend classes, and tour campus.
- ✓ **Community Health Nursing** – Undergraduate nursing students gain real-world experience through working with Baltimore City Fire Department EMS, providing Bolton Hill residents with health education and screenings, and promoting healthy activities to high schoolers.

LOOKING AHEAD

As a part of the Maryland Unites campaign, TU has granted each employee up to 12 hours of leave to use for community service during 2015.

POSITIVE IMPACT

“It is really a question of, ‘How can we portray this individual within the larger framework, but keep the story centered in their eyes?’”

– **Raul Ceballos**,
student researcher with the Anthropology by the Wire partnership in the Sharp Leadenhall neighborhood of Baltimore

“I love working with the men at the Helping Up Mission, seeing how the students’ negative perceptions of the homeless are shattered by engaging with the clients, and seeing students become inspired to serve a population that they once would never have considered working with.”



– **Mary Lashley**,
Promoting Health Among the Inner City Homeless at the Helping Up Mission

“I enjoy watching teachers and their students directly benefit from Project ASTRO. I have shared our program’s success at the national and international levels and have received many emails regarding the positive impact of the program on the partnering teachers and schools.”

– **Rommel Miranda**,
Project ASTRO

PARTNERSHIP STORIES

TU's partnerships and relationships span across colleges, departments, and administrative divisions. They involve students, faculty, staff, and community members. Some examples of our partnerships and relationships are below, though they are by no means the only great partnerships currently happening:

Promoting Health Among the Inner City Homeless at the Helping Up Mission

This partnership, which began in 2003, engages Towson University and the Helping Up Mission in Baltimore City in developing and implementing programs to promote and maintain the health of the Mission's 500 member resident population. Past programs have included oral health care, TB screening and treatment, and health fairs. Most recently, a faculty member in the Department of Nursing, who also serves on the Board of Directors, is working with Mission leadership to develop the Mission's first ever Center for Health and Wellness, which will create opportunities for students and faculty across the College of Health Professions.



Department of Theatre Arts Reading Encouragement Program

The Department of Theatre Arts Reading Encouragement Program educates majors to use theatre as a tool to inspire third-graders to be life-long readers. Theatre students receive mentorship and training in storytelling techniques along with teaching tools for working with third graders during this important transitional year in reading education. After classroom instruction, theatre students visit Dr. Bernard Harris Sr. Elementary School to put their educational training into practice.



Surfing Exposure Opportunity for Children with Autism

Surfers Healing Our Children with Autism sponsors professional surfers to come to Ocean City, Maryland each August and provide free surfing exposure opportunities to children with autism and a family fun day at the beach. Students in the Honors College and the Department of Occupational Therapy and Occupational Science volunteer and assist with the camp.



Improving Occupational Safety & Health for Maryland's Employers

The Division of Innovation and Applied Research is working with the Division of Labor and Industry (DLI) at the Department of Labor, Licensing, and Regulation to support and promote occupational safety across the state. Initiatives include: facilitating the DLI Occupational Safety Regulation Enforcement Work Group to improve the enforcement of occupational safety and health across the state, developing information videos, and providing marketing and logistical support for the annual Labor and Industry Forum.



TOWSON UNIVERSITY-COMMUNITY PARTNERSHIPS AND RELATIONSHIPS

- ▶ 1524 Hollins Street: An Oral History
- ▶ A Study of the Life Sciences Industry in Maryland
- ▶ Addressing Homelessness in Baltimore
- ▶ Advancing Construction Education and Innovation in Maryland
- ▶ Advancing Education, the Arts, and Special Events
- ▶ Advancing Financial Responsibility, Athletics, the Arts, and STEM Education
- ▶ Advancing STEM and Public Safety
- ▶ AileyCamp Baltimore
- ▶ Anthropology by the Wire
- ▶ Applied Mathematics Laboratory
- ▶ Army Research Laboratory Educational Partnership Agreement
- ▶ Art and the Child Service-Learning Experience
- ▶ Arts Education and Outreach in Towson
- ▶ Assistance with ESL Classes and Interpretation
- ▶ Baltimore County Emergency Management Coalition
- ▶ Baltimore Excellence in STEM Teaching Project
- ▶ Boosting Financial Literacy
- ▶ Bridges to the Baccalaureate Program
- ▶ Building a GIS Tool for Public Libraries
- ▶ Building Information Modeling Course
- ▶ Building STEPS
- ▶ Campus Investments and New Arena
- ▶ Career Center Employer Partnership Program
- ▶ Career Center Internship Partnerships
- ▶ Center Stage Residency
- ▶ Cherry Hill People's Garden
- ▶ City Kids Art Program
- ▶ Community Health Nursing
- ▶ Community Services for Families
- ▶ Consortium for Urban Education
- ▶ Courses for seniors at the Edward A. Myerberg Center
- ▶ Dance Outreach with Deep Vision Dance Company, Inc.
- ▶ Defense Industry Community Adjustment Assistance
- ▶ Developing and Implementing a New Database for DLLR
- ▶ Developing Construction Design & Management Curriculum
- ▶ DLI Safety Outreach
- ▶ Early Childhood Education Student Teaching Internships
- ▶ Early Childhood Learning Research
- ▶ Early Childhood Professional Development
- ▶ Economic and Fiscal Impacts of Rent Control Legislation
- ▶ Economist on Call
- ▶ ECS School Supply Drive
- ▶ Editing as a Social Science
- ▶ Educational Opportunities through the T. Rowe Price Foundation
- ▶ E-Learning and Video Development with MSDE
- ▶ Election Experience in Baltimore County
- ▶ EMF Scholarships, Jobs, and Other Opportunities
- ▶ Elementary Education Internships
- ▶ Evaluating Climate Change with a 3D Visualization Tool
- ▶ Evaluation Metrics and Dashboard for JHU and Community
- ▶ ExPERT Program
- ▶ Feeding Homeless Men Battling Addiction
- ▶ Financial Support for Campus Initiatives
- ▶ Financial Support for STEM Teacher Preparation
- ▶ Geological Society of America Annual Meeting, 2015
- ▶ Girls in the Game After-School Athletic Programs
- ▶ GIS Initiatives at the SHA
- ▶ Grants for Students in the College of Business and Economics
- ▶ Greek Life Blood Drive
- ▶ Habitat for Humanity Annual Build
- ▶ Health Freedom Walk
- ▶ Health Promotion Initiatives in the Community
- ▶ Health Referral Relationships
- ▶ Helping Those in Poverty and Homeless
- ▶ Helping Underprivileged Women
- ▶ History Department Internship Program
- ▶ Increasing College Access for Baltimore City Public School Students
- ▶ Inside-Out Prison Exchange Program
- ▶ Instructional Technology Professional Development Graduate Program leading to a MS degree for School Library Media Specialists
- ▶ Internships and Research with the Baltimore Crime Laboratory
- ▶ Jobs and Scholarships for Accounting and Finance Students
- ▶ Keeping Maryland Safe through GIS
- ▶ Kennedy Krieger Institute Festival of Trees
- ▶ Latino Americans Grant Programming
- ▶ Law and American Civilization Internships
- ▶ Leadership Development with NWADP
- ▶ Let's Talk About It: Muslim Journeys
- ▶ Making Strides Against Breast Cancer
- ▶ Mapping Physical Activity in Baltimore City
- ▶ Marcellus Shale Safe Drilling Initiative Advisory Commission
- ▶ Maryland Chesapeake and Coastal Services
- ▶ Maryland Child Care Mapping Tool
- ▶ Maryland Council on Economic Education
- ▶ Maryland Department of Agriculture Cover Crops
- ▶ Maryland Military Installation Economic Impact Study
- ▶ Math in the Middle
- ▶ Mentoring at Higher Achievement Baltimore
- ▶ Methods for Teaching Dance
- ▶ Mid-Atlantic CIO Forum
- ▶ Model United Nations Conference program
- ▶ Moving to Learn: Growing Up Great with Dance and Environmental Science
- ▶ Northern Map Turtle Partnership
- ▶ Off Campus Living Fair
- ▶ Opera in a Can
- ▶ Physical Education Activities for Homeschool Children
- ▶ Polar Bear Plunge
- ▶ Preparing Urban Teachers
- ▶ Process Analysis for DPSCS
- ▶ Producing the Baltimore Business Review
- ▶ Professional Development Schools
- ▶ Program Evaluation of Maryland's Race to the Top Grant
- ▶ Project ASTRO
- ▶ Project Learning Tree
- ▶ Project Serve
- ▶ Project Wavyleaf
- ▶ Promoting Health Among the Inner City Homeless
- ▶ Providing Database Expertise to the Maryland State Archives
- ▶ Providing Hardware, Software, and In-Kind Gifts
- ▶ Providing Nursing Care in a Hospice Setting
- ▶ Providing Support for the Deaf Population at Project Homeless Connect
- ▶ Providing Swimming Instruction for Special Olympians
- ▶ Providing Transportation Support for the Toys for Tots Stuff-A-Bus
- ▶ Reading Services and Workshops
- ▶ Resource Wars Engaged Learning Experience
- ▶ Revitalize and Maintain Public Community Spaces
- ▶ Shapesville Where You Can Be U
- ▶ Sharp Leadenhall Community Partnership
- ▶ SiteMapping for MDOT
- ▶ Sociology, Anthropology, and Criminal Justice Internship Program
- ▶ Sponsoring TU Incubator
- ▶ Sprout Film Festival
- ▶ St. Mary's County Comprehensive Economic Development Strategy Analysis
- ▶ Strategic Partnership in Medical Services and Education
- ▶ Supporting Entrepreneurial Ecosystem
- ▶ Supporting Health Applications for Stroke Survivors
- ▶ Supporting older adults through health screenings
- ▶ Supporting Teacher Education
- ▶ Supporting Teachers Working with Second Language Learners and Their Families
- ▶ Supporting the Arts in Baltimore
- ▶ Supporting TU through Scholarships, Marketing, and In-Kind Gifts
- ▶ Supporting Women's Leadership
- ▶ Surfing Exposure Opportunities for Children with Autism
- ▶ Swallowing Neurophysiology Lab at Johns Hopkins
- ▶ T. Rowe Price Institute
- ▶ Teacher Academy of Maryland
- ▶ TEDCO Business Assistance Grant
- ▶ The Big Read
- ▶ The Department of Theatre Arts Reading Encouragement Program
- ▶ The Use of Minority- and Women-owned Brokerage and Investment Management Firms by the State of Maryland
- ▶ Towson University Cisco Academy
- ▶ Towson University Field Station
- ▶ Towson UTeach
- ▶ Towson VITA Tax Prep Site
- ▶ Training and Organizational Development with MTA
- ▶ Training for MEMA
- ▶ Training Future Generations of Leaders in Special Education
- ▶ Training with the Maryland Aviation Administration
- ▶ Transportation Safety through GIS Applications
- ▶ TU College Readiness Workshops
- ▶ TUGis Conference
- ▶ Understanding Educational Injustice
- ▶ Universal Design for Learning
- ▶ Upward Bound Program
- ▶ Urban Resources Initiative
- ▶ Video Production for the DLLR
- ▶ Volunteering at the Deafblind Shabbaton
- ▶ Website Design and Support for Maryland Developmental Disabilities Council
- ▶ Website Hosting for State Agencies and Municipalities
- ▶ Workforce Development and Computer Assistance for Families in Need
- ▶ Writing Skills for Teachers