

# RELEASE NOTES

Version 4.4 | November 2015

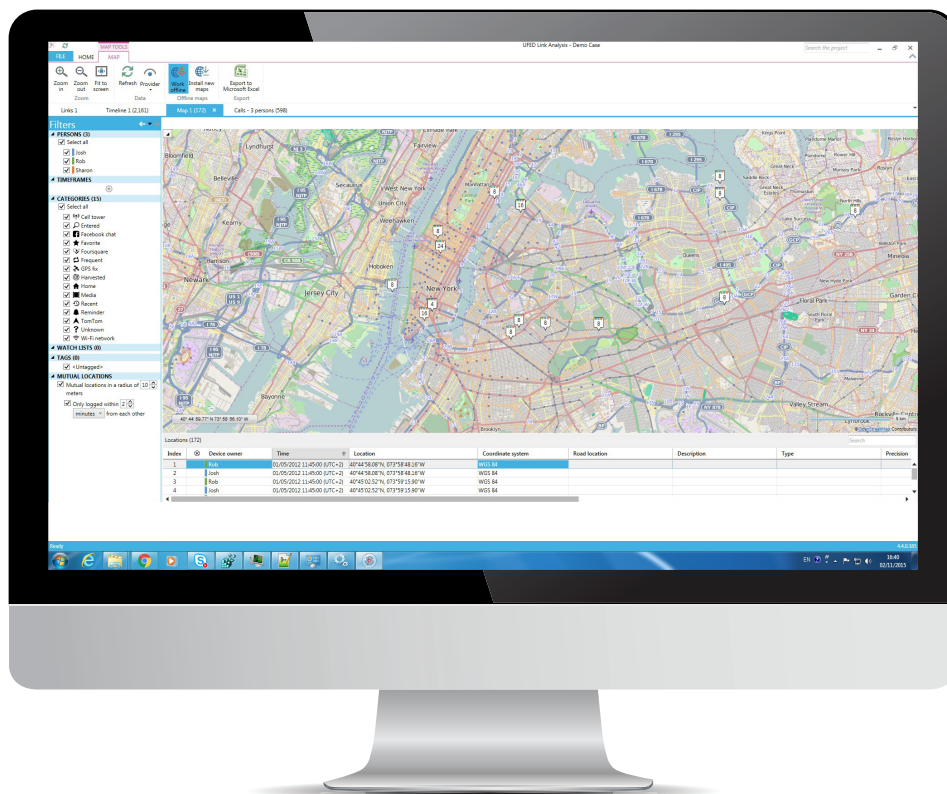
## UFED LINK ANALYSIS

### HIGHLIGHTS

- **Offline Maps:** View locations in the map view even when an Internet connection is not available
- **Summary Information:** View a summary of all the data sources that were imported into UFED Link Analysis

## OFFLINE MAPS: ACCESS LOCATIONS DATA ANYTIME ANYWHERE

UFED Link Analysis now makes it easy to unveil locations. View specific locations in the map view, even without an internet connection.



### To **download** the offline maps package:

1. Login to [My.Cellebrite](#).
2. Click the *Download* tab
3. Download the relevant *Offline Maps Package*

**Note:** The worldwide maps package installation is required prior to installing a specific geographic map package.

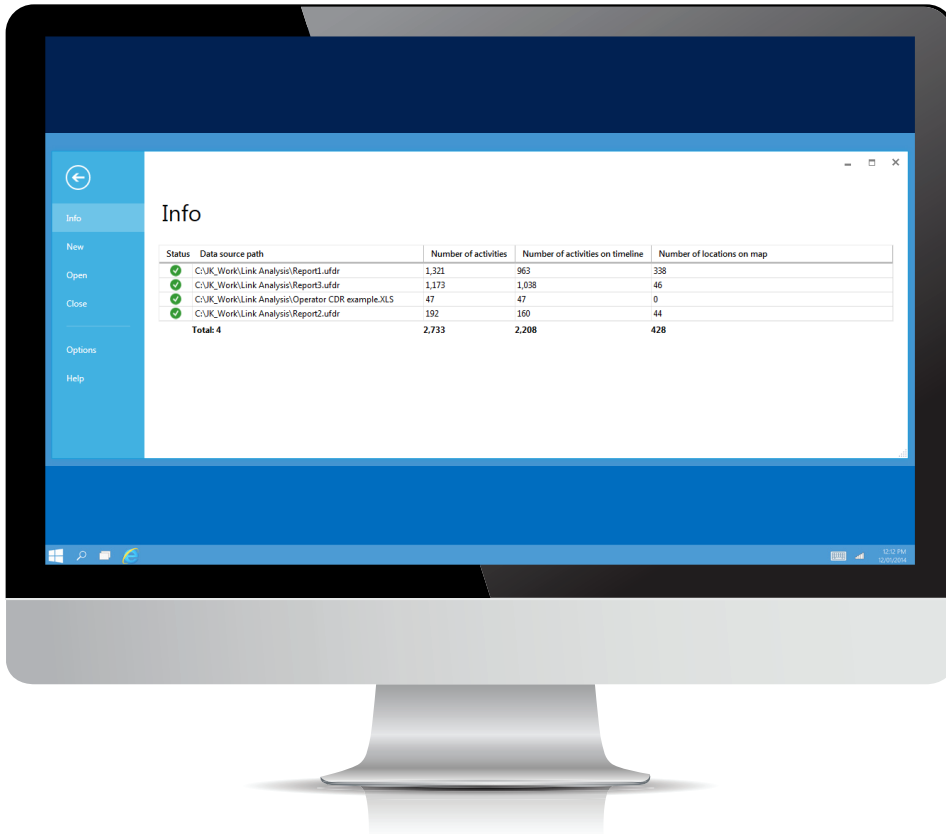
### To **install** the offline maps package:

1. In UFED Link Analysis, go to *Install New Maps*.
1. In the installation window, load the *Offline Maps Package*. The loading process takes some time to complete. The offline maps are installed and ready.

**Note:** The offline maps feature uses a light Windows service that opens and listens to TCP port 3000. To use this feature, you need to select the *Install offline maps service* check box during the installation process.

## QUICK SUMMARY: LOCATION AND TIMELINE EVENTS WITHIN EACH EXTRACTION

An *Info* menu now provides summary information for all the data sources that were imported per extraction into UFED Link Analysis.



The following information is displayed:

- **Status:** An indication of whether the data source was successfully imported or not.
- **Data source path:** The location path for the data source file.
- **Number of activities:** The number of activities in each data source file.
- **Number of activities on timeline:** The number of activities in each data source file that can be presented on the timeline.
- **Number of locations on the map:** The number of locations included in each data source file that can be presented on the map.

## RESOLVED ISSUES

1. Upgrade process from previous version - Users performing an upgrade from the previous UFED Link Analysis version (4.2.5) to this new version (4.4) will NOT lose any data.
2. Missing data in *Mutual Locations* - Some data was not shown in the *mutual locations* feature within the maps function. This issue has now been resolved.