



2014-2015

ANNUAL REPORT



NYU

**SILVER SCHOOL
OF SOCIAL WORK**

Points of Progress

AT NYU SILVER | 2014-2015

Educational Quality and Innovation

BS PROGRAM

In September 2014, McSilver Associate Professor in Poverty Studies **Robert Hawkins** was named assistant dean and director of the undergraduate program. Last year, 129 students enrolled in the program, representing 22 states and 10 countries, with 28 students declaring a social work minor. The program continues to draw non-social work students from across the University: 256 non-social work majors enrolled in NYU Silver courses.

The program's service learning courses remain extremely popular across the University and attract more students from outside NYU Silver than any other courses. They combine classroom learning with weekly volunteer experience at a local nonprofit organization, providing valuable services to the community. Four new, innovative courses were offered, including two service learning courses on youth and community and food insecurity. Two new electives were added to the course offerings on social deviance and taboo, and social media and advocacy.

The program's alumni serve as a testament to the strength of the program's education and training. For the class of 2014, 91 percent were employed full-time or enrolled in graduate or professional school six months after graduation. In May 2015, the program graduated 39 students; 58 new students enrolled in the program for fall 2015.

MSW PROGRAM

In fall 2014, 1,034 students enrolled in the MSW program, as the number of international students at the School continued its dramatic growth in all academic programs. To aid those MSW students from other countries, the MSW program has strengthened its resources for this population, including an eight-part webinar for students to take pre-arrival. Once in New York, students have several support options available, such as English conversation groups and a proofreading program.

In May 2015, the program graduated 466 students, with 39 from the Rockland County campus and 25 from the Westchester County campus. To prepare students for life after NYU Silver, the School has expanded its professional development offerings and resources over the last year. To encourage use of the Silver Career and Professional Development online program, professional development workshops are available to students twice a month. In addition, the School hosted numerous events this past year, such as résumé-writing workshops and presentations by social work agencies and employers.

A total of 491 graduates took the licensure exam for the first time in 2014 and upheld NYU Silver's tradition of outstanding pass rates. For the LMSW exam, NYU Silver's pass rate was 90 percent (national average of 82 percent). For the LCSW exam, NYU Silver's pass rate was 88 percent (national average of 78 percent).

New MSW Options

In September 2015, NYU Silver welcomed its first cohort of students to NYU Shanghai for the MSW program at Shanghai and New York. In March, the School held its first open house in Shanghai with approximately 25 applicants and prospective students attending for a day of presentations by faculty and administrators, a tour of the new NYU Shanghai building, and admissions interviews.

Back in New York, the School welcomed the first class of students in September 2015 for a new dual master's degree program in social work and health advocacy with Sarah Lawrence College. The program combines the theoretical knowledge bases of the two disciplines and prepares graduates to be social workers and health advocates for clinical practice with patients and families in diverse health care settings. In addition, graduates will have in-depth knowledge of macro practice aimed at reducing structural barriers to health care, such as poverty and racism.

PHD PROGRAM

The PhD program has strengthened its research-intensive reputation, positioning graduates for top-tier academic and research opportunities and cultivating independent investigators, scholars, and social work leaders.

The best example of this evolution in 2014-2015: the work and accomplishments of students. Doctoral students authored or co-authored 42 scholarly publications and made 53 conference presentations. These numbers more than doubled in the last year. The program has made a focused effort to increase research funding to students. Six received external funding, including two federally funded awards. Seven students graduated in May 2015, with three securing tenure-track faculty positions at McGill University, Samford University, and UNC-Chapel Hill. Two more students graduated in September 2015 with tenure-track positions at Hunter College and Rutgers University.

Also in September, formal implementation of a revised curriculum began. This curriculum provides more emphasis on quantitative and qualitative methodological training, focused specialization courses establishing substantive expertise in areas related to social welfare, a structured research mentorship program, and intense career preparation with significant involvement in faculty research.

A new dual degree PhD option in Shanghai is closer to its launch as NYU Silver signed a Memorandum of Understanding in March with the School of Social Development at East China Normal University (ECNU). Students are expected to start in fall 2016, and will spend half their time in New York City taking required foundation courses and the other half in Shanghai for their disciplinary specialization coursework. Each student will have a faculty mentor from NYU and ECNU. Upon successful completion, students will be issued a PhD in social work from NYU and an ECNU PhD degree from the School of Social Development.



Social Justice and Diversity

Last fall two grand jury decisions—in Ferguson and Staten Island—deeply touched communities across the United States. NYU Silver sponsored several forums for discussions, and students, faculty, and staff joined the larger New York community in demonstrations protesting issues of systemic, structural injustice. In December, the NYU Silver community held a moment of silence for Michael Brown, Eric Garner, and others who have been victims of injustice, outside of 1 Washington Square North.

Students, administrators, and staff had the opportunity to design and implement programs that address contemporary issues related to social justice, diversity, and social work practice through the spring 2015 Social Justice and Diversity Grant Challenge. This year's grant-sponsored programs were:

- **Contemporary Social Justice Issues: Addressing the Social Hardships that Youth Face in the 21st Century** co-sponsored by the Students of Color Collective, the Student Collective for Global Social Work, and the Phi Alpha National Honor Society - Pi Pi Chapter.
- **Next Step: College** co-sponsored by the Center for Multicultural Education and the McSilver Institute for Poverty Policy and Research.
- **Trans Care Basics: Clinical Work with the Transgender Population** co-sponsored by the OUT Faculty & Staff Group and Pride In Practice.
- **Sexual Violence Awareness and Prevention Conference** co-sponsored by the Students of Color Collective, the Chinese Student Support Group, and the Sexual Violence Awareness Committee.
- **Addressing Victims' Needs: Creating Holistic Models of Support for Victims of Intimate Partner Violence** co-sponsored by the Center on Violence and Recovery, Global Spiritual Life at NYU, and the Latino Social Work Student Organization (LSWSO).
- **Voices of Young Asians and Asian-Americans in the United States** co-sponsored by the Student Collective for Global Social Work and the Chinese Student Support Group.
- **Recruit, Support, and Develop Latino Social Workers** co-sponsored by the LSWSO. The LSWSO was also honored with a 2015 NYU President's Service Award recognizing the group's significant impact on the NYU community.

Faculty members are at the helm of projects promoting issues of diversity at the School. Clinical Assistant Professor **Alison Aldrich** serves as chair on the NYU Silver OUT Faculty & Staff Group—recipient of a 2015 Social Justice and Diversity Grant—whose mission is to promote social justice and to provide education support for students, staff, and faculty on LGBTQ issues.

The NYU Office of the Vice Provost for Faculty, Arts, Humanities and Diversity awarded NYU Silver faculty members **Diane Grodney**, **Robin Miller**, and **Tazuko Shibusawa** funding to create a two-part training to improve instructor skills in facilitating challenging classroom conversations on race and racism. For a year, in collaboration with students and other faculty members, they have been developing a video and content for workshops aimed to assist instructors develop alternative interventions, based on an anti-racist teaching approach and increased self-awareness. The first training will take place in November 2015.

Community Engagement

EVER-GROWING GLOBAL LEARNING OPTIONS

This year's global learning offerings for students spanned the globe with programs in Buenos Aires, Argentina; Paris, France; Puebla, Mexico; Tel Aviv, Israel; and Washington, DC. In total, 68 students enrolled in NYU Silver's global programs in 2014-2015.

In fall 2015, NYU Silver launched its first semester-long study abroad course in Buenos Aires. Students will take four NYU Silver courses plus an elective and have their field placement with one of the McSilver Institute's community-based partners in Argentina. In the spring semester, students will work in New York with the McSilver Institute.

This past winter the Silver School signed a Memorandum of Understanding with the Faculty of Applied Social Sciences at RheinMain University of Applied Sciences in Wiesbaden, Germany, to foster collaborative faculty research and student education between the two schools, including a joint international summer school, expected to take place in 2016.

FIELD LEARNING INNOVATION

As the School grows its international programs, NYU Silver's Office of Field Learning and Community Partnerships has been building relationships with agencies in preparation of two major international initiatives started in fall 2015: the MSW program in Shanghai and New York and the semester-long course in Buenos Aires. Students in both programs will have field placements outside the United States—a first for the School.

In fall 2014, the Health Resources Services Administration (HRSA) awarded NYU Silver a \$1.44 million grant to create a new fellowship program for second-year MSW students to train them in interdisciplinary patient care. The HRSA award provides \$900,000 in financial aid for 99 students over three years, and an opportunity for focused learning in the field and classroom in integrated health and behavioral health for poverty-impacted youth, reflecting the new reality for social workers post-Affordable Care Act.

Starting this September, MSW students now have a more integrated experience relating the theories taught in the classroom with actions put into practice at field placements. Social Work Practice instructors will serve as faculty advisers—liaisons to field agencies—to students in their class.

PROFESSIONAL DEVELOPMENT OPPORTUNITIES GROW AND DIVERSIFY

NYU Silver expanded its educational options for professional social workers to meet new state continuing education requirements for licensed social workers, effective January 1. NYU Silver was one of the first schools recognized by the New York State Education Department's Board for Social Work, as an approved provider of continuing education for licensed social workers. As a result, the School saw a significant growth of participants from 724 in 2013-2014 to 2,835 in 2014-2015.

The School expanded its acclaimed post-master's certificate programs with a new offering consisting of five modules focused on transformations in primary and behavioral healthcare systems in relation to Affordable Care Act changes. In addition, the School hosted or co-hosted 25 seminars and workshops over the year and hosted a major conference last spring on creative arts and social work.

After introducing its first online lecture series last year, the School offered its inaugural set of webinars on dialectical behavior therapy, palliative and end-of-life care, sex addiction, and social workers in public schools, with additional webinars planned for the fall.



DEAR FRIENDS,

I am proud to share with you the NYU Silver School of Social Work's 2014-2015 annual report, showcasing our outstanding accomplishments. We continue to build external funding for faculty research and scholarship, which increased to \$7.96 million for projects that advance evidence-based practices, services to underserved populations, and innovations in the management and organization of health and social services around the globe.

We have grown our strong academic programs and expanded our global presence. We proudly launched three exciting new degree options this September 2015, including the DSW in clinical social work and the global MSW in collaboration with NYU Shanghai. The executive-style DSW program prepares licensed social workers to become leaders in agencies and academic institutions and builds on the School's recognized excellence and history in clinical training. The Shanghai-New York MSW program prepares social workers for practice in a global world. MSW students will also study this year in Mexico, Argentina, France, Israel, and other locations.

Thank you to everyone who generously supported NYU Silver, our students, and our successes this past year!

Sincerely,



Lynn Videka
Dean and Professor



Research and Scholarship

A list of faculty publications can be found online at: socialwork.nyu.edu/our-faculty/faculty-works.

ON THE FRONT LINES IN THE DOMINICAN REPUBLIC'S HIV BATTLE

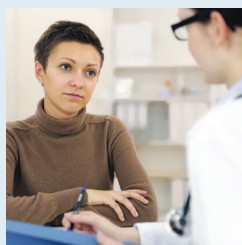
The Caribbean region has the second highest rate of HIV/AIDS prevalence after Sub-Saharan Africa. In a project supported by the MAC AIDS Fund, the **Center for Latino Adolescent and Family Health (CLAFH)** is working to increase HIV testing and reduce infection rates among sex workers in the tourism town of Sosúa, Dominican Republic, a "hot spot" in the fight against HIV. In recent years, the Dominican Republic has seen lowered HIV prevalence, however elevated rates persist among sex workers.

CLAFH will reach out to both female and male sex workers to elicit input and guidance regarding best strategies for developing targeted HIV testing and prevention efforts. Building on past work in Sosúa, CLAFH will recruit sex workers from areas documented as high-risk locations, namely alcohol venues known for commercial and transactional sex between locals and foreign visitors. The project's specific aims are to identify, link, and retain HIV infected sex workers to treatment. Furthermore, the project will seek input from HIV negative sex workers on the feasibility and acceptability of pre-exposure prophylaxis scale up within the sex tourism industry.



TRAINING LEADERS IN INTEGRATED BEHAVIORAL HEALTH CARE

In 2012, the U.S. Department of Health and Human Services' Health Resources and Services Administration placed NYU Silver at the forefront of education in integrated health and behavioral health care with a three-year, \$467,000 grant. NYU Silver—along with the NYU Colleges of Nursing and Dentistry and two community-based organizations—established the NYU Integrated Behavioral Health Project to train social work students committed to working in behavioral health. Specifically, the School developed a unified classroom-field experience for MSW students focused on services for women with serious mental health challenges.



The first cohorts graduated in 2014 and 2015, and the School has evaluated the yearlong program's effectiveness via student and field agency surveys at three stages during and after the program. Students' self-efficacy significantly increased, as well as knowledge and skills in direct service work, ethics, and use of concepts from field instruction. For 2014 alumni, all respondents were employed within three months of graduation. Overall, students felt they benefitted from the program and improved their ability to deliver integrated mental health care—exactly what's needed following the passage of the Affordable Care Act.

ELIMINATING THE STIGMA OF MENTAL ILLNESS FOR BLACK YOUTH

With funding from the National Institute of Mental Health and the Annie E. Casey Foundation, Associate Professor **Michael Lindsey** has spent two years researching ways to reach and engage Black youth and their families who are in need of depression treatment. In many Baltimore communities, these children struggle daily with violence, substance abuse, unstable homes, and under-funded schools.

Over the last two decades, suicide rates for Black boys aged 5 to 11 have doubled. Lindsey's research takes into account the stigma associated with mental health in the Black community, in order to develop effective and applicable methods to reach this population. As a result, Lindsey and school-based clinicians have observed a statistically significant reduction in depression symptoms, increased mental health help-seeking behaviors, and reduced mental illness stigma. With the right interventions, these students benefit from treatment and have better academic outcomes.

Lindsey hopes to scale-up his research and intervention methods across Baltimore's school system to make a larger impact curbing depression rates and, ultimately, suicide rates.



TRANSITIONING OUT OF RESIDENTIAL SUBSTANCE ABUSE TREATMENT

People leaving long-term residential treatment for substance abuse face numerous challenges, all compounded by the lack of formal supportive services available post-care. Assistant Professor **Jennifer Manuel** is working to adapt Critical Time Intervention (CTI)—an evidence-based program providing transitional assistance for individuals with severe mental illness and a history of homelessness—for people exiting long-term residential substance abuse treatment.

The National Institute on Drug Abuse funded the three-phase project over five years. Manuel and her colleagues are finishing the first phase—interviews with clients currently in treatment, former residents, and residential and outpatient staff to learn what helps and hinders those transitioning out of care. Preliminary findings show the biggest obstacles relate to lack of employment and financial and housing security. In addition, mental health needs and felony convictions limit job opportunities.

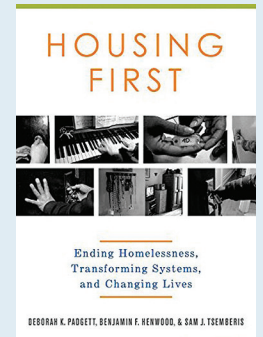
Soon the team will adapt the intervention for residential substance abuse treatment and run a 12-month pilot study. With no government funding for follow-up care, people often head down the road of drug relapses and hospitalization. Manuel believes modifications to CTI will help break this cycle.



THE SUCCESS STORY OF HOUSING FIRST

Housing First: Ending Homelessness, Transforming Systems, and Changing Lives, due out this fall by Oxford University Press, is the first book to tell the story of a paradigm-shifting approach to ending homelessness that combines evidence-based practice and consumer choice. Authors Professor **Deborah Padgett**, Benjamin Henwood, MSW '04, PhD '11; and Sam Tsemberis, founder of Housing First, trace the history of homelessness in the United States and report on the rise of a “homeless industry” of shelters and transitional housing programs. Housing First—established in New York City in 1992 and quickly spread to cities around the world—challenged the standard “staircase approach” by rejecting the usual demands of treatment, sobriety, and housing readiness.

The book summarizes multiple studies on Housing First, including the five-year, \$1.9-million New York Recovery Study led by Padgett and funded by the National Institute of Mental Health. The bottom line: providing immediate access to an apartment and support services to someone with mental illness and addiction is not only humane, but effective.



FAMILY-CENTERED APPROACHES FOR CHILDREN WITH BEHAVIORAL DIFFICULTIES

The National Institute of Mental Health has awarded a four-year, \$3-million grant to the **McSilver Institute for Poverty Policy and Research** to explore innovative family-centered approaches designed to strengthen parenting skills of caregivers to help youth with behavioral difficulties. Childhood behavioral difficulties often result in significant negative outcomes such as educational difficulties, substance use, criminal justice involvement, and interpersonal challenges.

The project builds on prior research by McSilver Director **Mary McKay** and her co-investigators, which established the efficacy of “The 4Rs and 2Ss for Strengthening Families:” Roles, Responsibilities, Respectful communication, Relationships, Stress management, and Social support. This new, wide-ranging study will enable researchers to test the scalability of the intervention across a portion of New York City’s public mental health system and try out modifications to better align with the needs of children and caregivers.



ZELDA FOSTER PROGRAM HOLDS TRAININGS IN CHINA

Over the summer Clinical Professor **Susan Gerbino**, director of the NYU Silver Zelda Foster Studies Program in Palliative and End-of-Life Care, and Esther Chachkes, mentorship director of the Zelda Foster Program, traveled to China to lead two workshops—in Hangzhou and Shanghai—on palliative and end-of-life care and social work. The Zelda Foster Studies Program and three Chinese organizations co-sponsored the Hangzhou workshop.

Approximately 120 social work faculty and practitioners in Hangzhou received an overview of palliative and end-of-life care delivery in the United States, such as ethics, the role of social workers, and work with the dying and bereaved. The session was held concurrently with the Chinese Committee of Rehabilitation and Palliative Care’s annual conference, where Gerbino delivered a keynote address on the role of social work in palliative care. This was the first time a social worker delivered a keynote at this national conference attended primarily by oncologists.

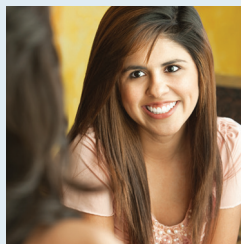


MENTAL HEALTH AND SERVICE USE IN THE LOWER EAST SIDE

The Staying Healthy Feeling Good Project, supported by the Lois and Samuel Silberman Fund, is examining the mental health and decision-making of young adults in a low-resourced community in New York’s Lower East Side. Associate Professor **Michelle Munson** and her colleagues interviewed 100 residents and found that approximately half—average age 25 and 99 percent ethnic minorities—live with depression symptoms and nearly all have experienced at least one traumatic event. Only 46 percent, however, have taken advantage of mental health help, and only 11 percent currently use such services.

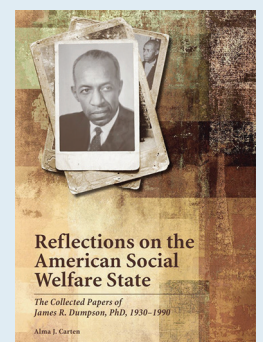
Preliminary data show stories of coping along with mental health challenges. Residents view their resilience at higher levels than college peers. Not surprisingly, participants are more pessimistic about their future, perhaps because 50 percent are neither working nor in school.

Researchers have partnered with the Henry Street Settlement over the project’s first two phases to build a foundation to examine the multiple options young adults can choose to manage their mental health. The ultimate goal: partner with the community to improve the overall health of young adults.



RECLAIMING THE LEGACY OF JAMES R. DUMPSON

Associate Professor **Alma J. Carten**’s historical research study chronicles the life and contributions of one of the profession’s most prominent social workers in her book *Reflections of the American Social Welfare State, The Collected Papers of James R. Dumpson, PhD, 1930-1990*. Published by NASW Press, the book examines Dumpson’s contributions in academia, government, and philanthropy over a 50-year period when social welfare policy was expanded through New Deal and civil rights legislation and the virtual dismantlement of entitlement programs for the poor with the ascendancy of a conservative ideology. Carten envisions the book will be an important teaching resource for social welfare history and social work’s contribution to social policy.



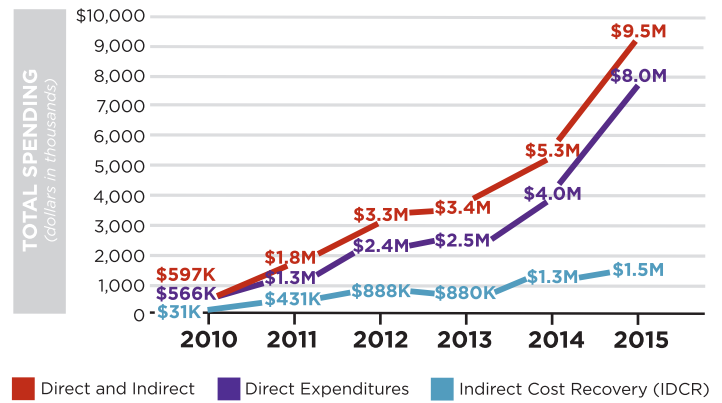
NYU Silver by the Numbers

Research Funding

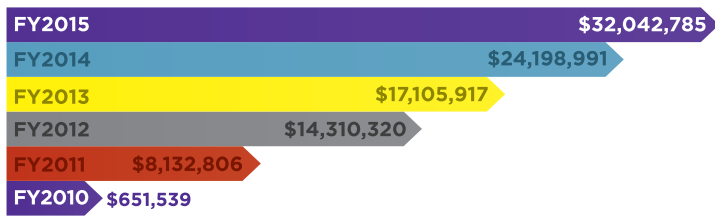
NYU Silver saw a major increase in funding of its externally sponsored projects in 2014-2015. Annual research funding rose to \$9.5 million, up more than \$3 million from 2013-2014. The School's total research portfolio—which includes total awards for active research, evaluation, and training projects—stands at \$32 million.

The following faculty members received major grants: Vincent Guilamo-Ramos, Robert Hawkins, James Jaccard, Mary McKay, Diane Mirabito, Judith Siegel, and Lynn Videka. They received funding from Ample Table for Everyone, Centers for Disease Control and Prevention's Division of Adolescent and School Health, MAC AIDS Fund, Mayor's Fund to Advance New York City, Mori Memorial Foundation, National Institutes of Health, New York State Office of Mental Health, and Robin Hood Foundation.

SPONSORED PROGRAM SPENDING (By fiscal year)



TOTAL RESEARCH PORTFOLIO (By fiscal year)

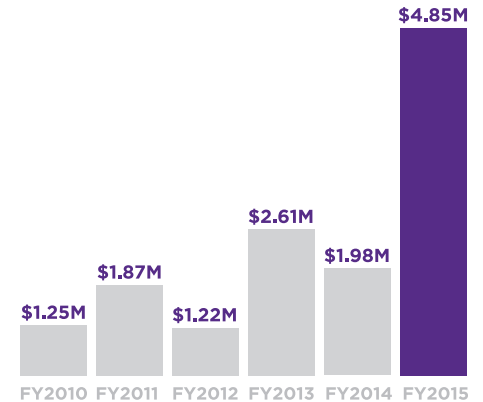


Philanthropy

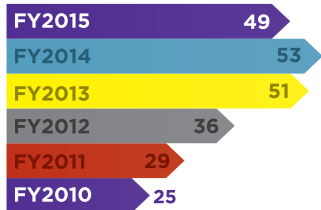
The School's priority during this extraordinarily successful year of fundraising continued to be student scholarships.

Thank you to our generous donors for your support in 2014-2015!

OVERALL FUNDRAISING



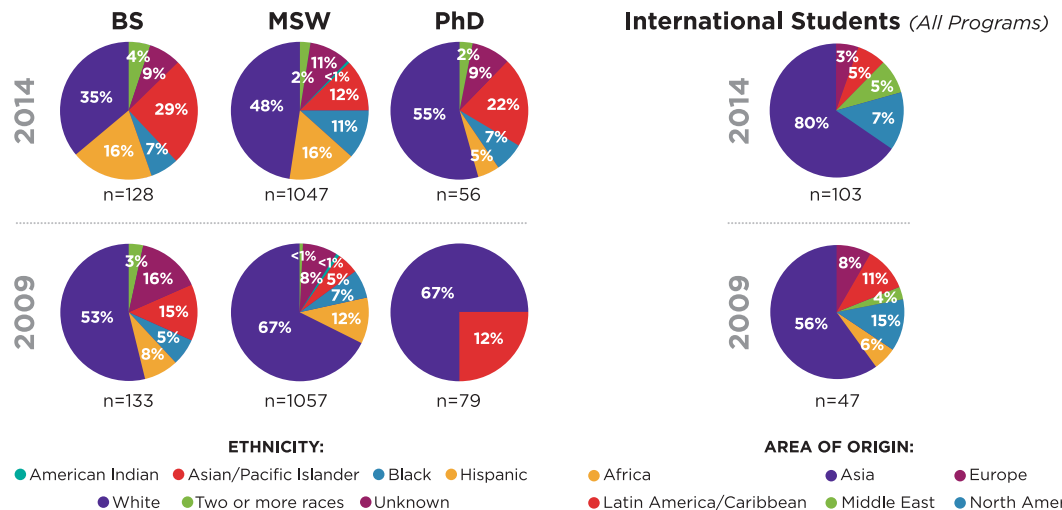
ACTIVE GRANTS (By fiscal year)



Diversity of Silver School Students

The percentage of students of color has grown in all academic programs from 2009 to 2014. The number of international students continues to increase—up to 103 in 2014 from 47 in 2009. This growth is particularly noticeable for students from China. In 2014, 31 Chinese students enrolled at NYU Silver.

NYU SILVER STUDENT DIVERSITY (As of November 1, 2014)



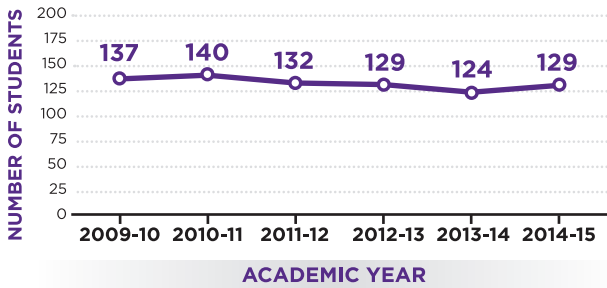
PROGRAM PROFILES

NYU Silver enrolled 1,250 students in fall 2014. The undergraduate program enrolled 42 new students, the master's program 476 new students, and the PhD program 5 new students.

Baccalaureate Program

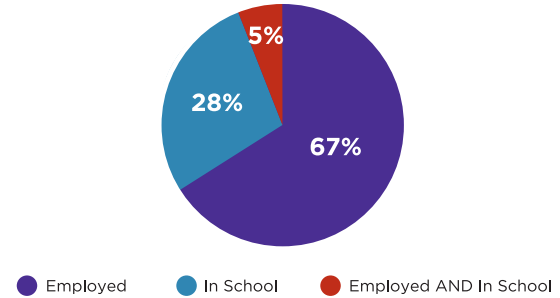
BS ENROLLMENT SUMMARY

Total enrollment per academic year, fall semester start



2014 BS GRADUATE JOB PLACEMENT

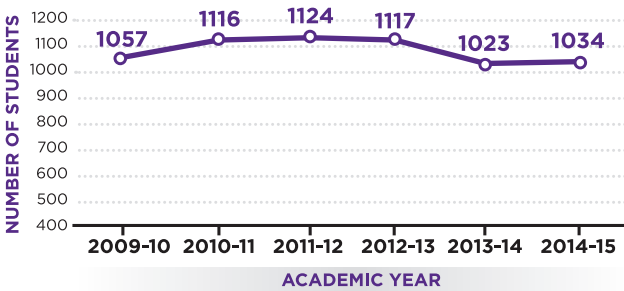
(Within 6 months of graduation)



MSW Program

MSW ENROLLMENT SUMMARY

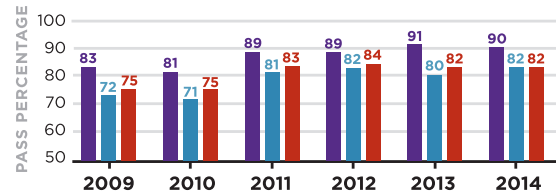
Total enrollment per academic year, fall semester start



LICENSURE PASS RATES

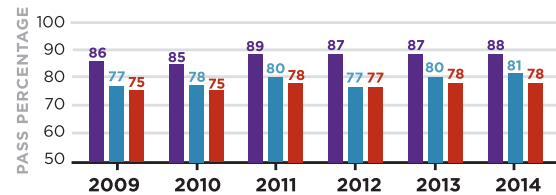
MASTER'S EXAMINATION

(required for licensure as an LMSW in NY)



ASWB CLINICAL EXAMINATION

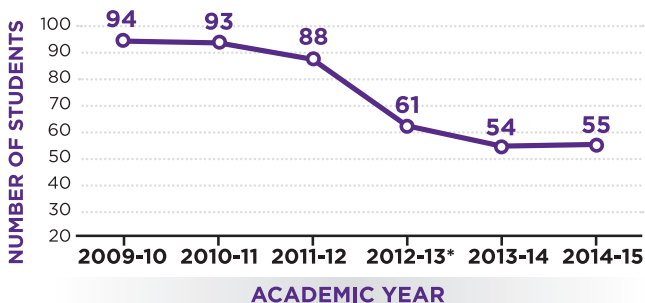
(required for licensure as an LCSW in NY)



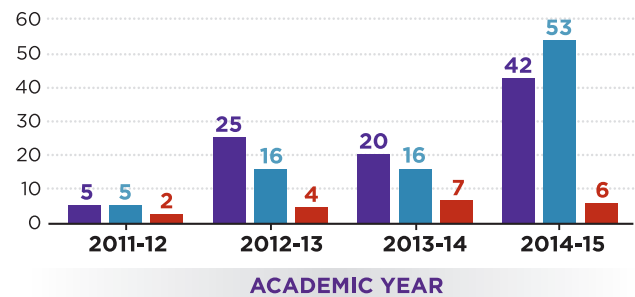
PhD Program

PHD ENROLLMENT SUMMARY

Total enrollment per academic year, fall semester start



PHD STUDENT RESEARCH and SCHOLARSHIP OUTCOMES



* 2012-13 reflects push to graduate ABDs from earlier years and decreased incoming student cohort size.

Legend: Total Publications (dark blue), Total Presentations (medium blue), Total Students Awarded External Funding (red)

NYU Silver Full-Time Faculty

Theresa Aiello, *Retired Associate Professor of Social Work*

Alison Aldrich, *Clinical Assistant Professor of Social Work*

Jeane W. Anastas, *Professor of Social Work; Director, Strategic Planning and New Initiatives*

Briana Barocas, *Research Associate Professor; Director of Research, Center on Violence and Recovery*

Stacey L. Barrenger, *Assistant Professor of Social Work; McSilver Faculty Fellow*

Alma J. Carten, *Associate Professor of Social Work; McSilver Faculty Fellow*

Aminda Heckman Chomanczuk, *Assistant Professor/Faculty Fellow*

Phil Coltoff, *Senior Faculty Fellow; McSilver Faculty Fellow*

Anne C. Dempsey, *Clinical Assistant Professor of Social Work*

Suzanne England, *Professor of Social Work*

Trudy B. Festinger, *Professor of Social Work*

Martha A. Gabriel, *Associate Professor of Social Work*

Susan Gerbino, *Clinical Professor of Social Work; Director, Zelda Foster Studies Program in Palliative and End-of-Life Care; Coordinator, Westchester County Campus*

Liliana Goldin, *Professor of Social Work; McSilver Faculty Fellow; Center for Latino Adolescent and Family Health Faculty Fellow*

Diane Grodney, *Clinical Associate Professor of Social Work*

Vincent Guilamo-Ramos, *Professor of Social Work; Director, PhD Program; Pilot and Mentoring Core Director, Center for Drug Use and HIV Research (CDUHR); Co-director, Center for Latino Adolescent and Family Health*

Wen-Jui Han, *Professor of Social Work; Co-Director, NYU-ECNU Institute for Social Development at NYU Shanghai; Co-Director, MSW Program at NYU Shanghai and New York; McSilver Faculty Fellow*

Robert L. Hawkins, *McSilver Associate Professor in Poverty Studies; Assistant Dean and Director, Undergraduate Program; McSilver Faculty Fellow*

Gary Holden, *Professor of Social Work*

Kimberly Hudson, *Assistant Professor/Faculty Fellow*

James Jaccard, *Professor of Social Work; Associate Dean, Research; Co-director, Center for Latino Adolescent and Family Health*

Minchao Jin, *Assistant Professor of Social Work*

Gerald Landsberg, *Professor of Social Work*

Linda Lausell Bryant, *Clinical Assistant Professor of Social Work; Katherine and Howard Aibel Visiting Professor and Executive-in-Residence; Director, Undergraduate Field and Service Learning*

Michael A. Lindsey, *Associate Professor of Social Work*

Wenhua Lu, *Assistant Professor/Faculty Fellow*

Yuhwa Eva Lu, *Associate Professor of Social Work*

Virgen Luce, *Clinical Associate Professor of Social Work*

Siu-Ping Ma, *Clinical Associate Professor of Social Work*

Jennifer Manuel, *Assistant Professor of Social Work*

James I. Martin, *Associate Professor of Social Work; Associate Dean for Academic Affairs; Director, MSW Program*

Mary McKernan McKay, *McSilver Professor of Poverty Studies; Director, McSilver Institute for Poverty Policy and Research*

Thomas M. Meenaghan, *Professor Emeritus of Social Work*

Darcey Merritt, *Assistant Professor of Social Work*

Robin L. Miller, *Clinical Assistant Professor of Social Work; Assistant Coordinator, Westchester County Campus*

Linda G. Mills, *Lisa Ellen Goldberg Professor; Professor of Social Work, Public Policy, and Law; Executive Director, Center on Violence and Recovery; Vice Chancellor for Global Programs and University Life; Associate Vice Chancellor for Admissions and Financial Support for NYU Abu Dhabi*

Diane Mirabito, *Clinical Associate Professor of Social Work*

Peggy A. Morton, *Clinical Associate Professor of Social Work/Assistant Dean, Field Learning and Community Partnerships*

Michelle R. Munson, *Associate Professor of Social Work; Center for Latino Adolescent and Family Health Faculty Fellow; McSilver Faculty Fellow*

Maryellen Noonan, *Associate Professor of Social Work; Coordinator, Rockland County Campus*

Deborah Padgett, *Professor of Social Work and Global Public Health; Professor of Psychiatry; McSilver Faculty Fellow*

Rohini Pahwa, *Assistant Professor of Social Work*

Dina J. Rosenfeld, *Clinical Associate Professor of Social Work*

Tazuko Shibusawa, *Associate Professor of Social Work*

Judith Siegel, *Associate Professor of Social Work*

Sandy Speier, *Clinical Associate Professor of Social Work*

Victoria Stanhope, *Associate Professor of Social Work*

Shulamith Lala Straussner, *Professor of Social Work*

Carol Tosone, *Associate Professor of Social Work; Director, DSW Program*

Ellen Tuchman, *Associate Professor of Social Work*

Lynn Videka, *Professor of Social Work; Dean, Silver School of Social Work; McSilver Faculty Fellow; Co-Director, MSW Program at NYU Shanghai and New York*

Miriam Villalobos, *Assistant Professor/Faculty Fellow*

Jerome C. Wakefield, *University Professor; Professor of Social Work; Professor of the Conceptual Foundations of Psychiatry, NYU School of Medicine; Faculty Affiliate, InSPIRES (Institute for Social and Psychiatric Initiatives: Research, Education and Service), Department of Psychiatry, NYU School of Medicine; Affiliate Faculty, NYU Center for Bioethics; Affiliate Faculty, NYU Center for Ancient Studies; Honorary Faculty, Institute for Psychoanalytic Education, NYU Medical Center*

Qian Xie, *Coordinator of Field Education and Instructor of Social Work*

Robert Yaffee, *Research Professor*

FACULTY AWARDS AND HONORS

Briana Barocas: Accepted into the National Science Foundation's Innovation Corps program

Alma Carten: Celebrated 25 years at NYU

Susan Gerbino: Quality of Life in Cancer Care Award, Association of Oncology Social Work

Vincent Guilamo-Ramos: Member, Board of Directors of the Latino Commission on AIDS; Nia Faculty Award, NYU Center for Multicultural Education and Programs

Michael A. Lindsey: Member-at-Large, Board of the Society for Social Work and Research

Yuhwa Eva Lu: International Research Fellow, Social Work and Social Policy Research Center, East China University of Science & Technology

Mary McKay: Astor Visiting Lectureship, Oxford University; Member, NY State's Delivery System Reform Incentive Payment Project Approval and Oversight Panel

Dina Rosenfeld: Faculty Partner Award, NYU Global Spiritual Life

Carol Tosone: Visiting Research Fellow, Queens University, Belfast, Northern Ireland; Visiting Professor, Brigham Young University, Provo, Utah

Lynn Videka: Board Chair, New York Council of Nonprofits

Thank You **SILVER SCHOOL HONOR ROLL**

The annual Honor Roll of Donors recognizes the generosity of those who have supported the Silver School of Social Work with gifts in the past year. As you read through the list, you will recognize many familiar names and some new friends who enable NYU Silver to provide scholarships, support faculty and student research, and fund special projects that benefit students. Your investment allows the school to provide a meaningful education to students who graduate as professionals and productive citizens.

We are grateful for your support and hope we can continue to count on you in 2015-2016.

Dean's Circle Founders: \$10,000 Plus

291 Foundation
Howard & Katherine Aibel Foundation Inc.
Howard J. Aibel
Anonymous
Phyllis Barasch*
William B. and Jane Eisner Bram Foundation
William B. and Jane Eisner Bram*
Jan Browne
The Y.C. Ho/Helen & Michael Chiang Foundation
Philip Coltoff
Nancy H. Edelman*
Mary Edlow*
The Edlow Family Fund, Inc.
Harman Family Foundation
Inserra Supermarkets
Bonnie A. Inserra
Lawrence R. Inserra
Lindsey M. Inserra
Jewish Foundation for Education of Women
Lori Greifer Kaufman*
LCU Fund for Women's Education
Lucius N. Littauer Foundation, Inc.
M.A.C. AIDS Fund
Mori Research Foundation
Margaret Munzer-Loeb*
New York Community Trust
Gideon & Claudia Oberweger Family Foundation
Claudia M. Oberweger Frank*
Paola Pardini
The Carroll and Milton Petrie Foundation
Estate of Helen Rehr
Robin Hood Foundation
The Rockefeller Foundation
Elinor A. Seevak*
Jayne M. Silberman*
Constance and Martin Silver*
Jacqueline S. and David E. Simon*
New York State Health Foundation
Clive Tregaskiss
Helena Kornwasser Usdan
Steven Usdan
Nancy L. Wender*
Caroline Williamson
The B. Robert Williamson Jr. Foundation
The Bing-Le Wu Family

Dean's Circle Benefactors: \$5,000-\$9,999

Camille M. Banks-Lee
Elaine V. Cohen
Matt Dinusson
Rachel Foster Kodsi
German Society of the City of New York
Juanita Behrstock Leff
Maverick Capital Foundation
Alice K. Moorhead
Nancy L. Nebeker*
Heidi G. C. Rieger
Lynn Videka*

Dean's Circle Members: \$1,000-\$4,999

Alison Aldrich
The Arnold F. Baggins Foundation Inc.
Robert R. and Sheryl D. Bellick
Bella Browne
Jan Browne
Calvin R. Carver, Jr.
Carver/Delaney Families Foundation, Inc.
Edward J. Costello, Jr.
Anne DeLaney*
Fidelity Charitable
Arlene R. Gellman
Susan B. Gerbino*
Howard W. Goldstein
Cecile Strauss Hanft*
Sharon L. Hawkins
Julia H. Humiston
George & Janet Jaffin Foundation
Jewish Communal Fund
Carol M. Kanarek*
Judith Kellner*
Doris C. Kempner*
Kathleen T. Kennedy*
Lois Jaffin Levine
Tondra and Jeffrey H. Lynford*
Lynford Family Charitable Trust
Maryann Marston
Mary McKay
National Philanthropic Trust
Dwight D. Panozzo
Puerto Rican Family Institute
Salesforce.com Foundation
Robert V. Schwalbe*
Kelly Shaffer
Debra Katz Shapiro
Kathryn Smerling*

Jacob B. Toll
Ronald Toseland
Stephen Barry Ungar
Mindy Utay*
Wells Fargo Foundation
Silkay Moskowitz Wolchok*

Sponsors: \$500-\$999

Arce Law Office PLLC
Darren Arthur*
Blue Sky Consulting, LLC
Wendy Bond
Peter C. Campanelli
Yolanda Castro
Sally Dayton Clement
Kira B. Copperman
Margaret Fluhr*
Nancy Cromer Grayson
Julie Ann Hall
Miriam Klevan
Rai Camille Rance
Ann Rose Simon
Amy K. and Richard M. Sommer
William and Lynn Wild Spector*
James Tela
Carol Tosone*
Sarah Varela
W. M. Foundation
Monica Weiss

Associates: \$100-\$499

Carl L. Algood
Theresa Ann Altilio
Valerie Tate Angel
Karen Appel
Florence Applebaum
Eileen H. Apruzzese
Robin H. Aronow
Eugene Aronowitz
Jacqueline A. Auriemma
Samuel R. Aymer
B McDonald Therapy LLC
Bevinn F. Badenhausen
Mary Lou Baiocco
Christina C. Banks
Marilyn J. Baron
Beth L. Barry
Meredith A. Barton
Bonnie J. Bell-Curran
William Berde
Joan G. Berkowitz
Julie D. Berwick
Joan Berzoff
Caryn R. Bienstock
Alison Stanley Birnbaum

Leslie Black Currie
Matthew W. Braman
Nicole A. Breck
Raymond M. Brown
Yvette Brown and Kevin J. Burke
Lauren M. Capaci-Blake
Lois A. Carey
Francesca Gardner Cendrowski
Christina S. Chapin
Jane Monell Chase
Siu-Wah Chau
Elisa Chow
Roger L. Clinton
Carmen Collado*
William A. Cook*
Tyrone C. Copeland
Erin M. Curran
S. Annette Curtis-Williams
Penelope Damaskos
Moses Deese
Diane DeRosa
Maxime Hadrien Desplan
Bernard Di Lullo, Jr.
Robyn G. Dietz
Dolores M. Dillon
Brigid M. Doyle
Carol A. Dupree
Sally Dwyer
Nancy Dykstra-Powers
William L. Edelman
Gregory B. Eley
Kasey A. Erickson
William and Kristyn Fazzalero
Ann J. Feder-Pomerantz
F.J.C.
Maureen E. Feeney
Jacquelyn Emch Felix
Alejandrina Felizdelesma
Paula Fendall*
Mary L. Francis
Belinda J. Frankel
Aquila Frederick
Cindy L. Freidmutter
Geraldine M. French*
Harriette Friedlander
Carole Friedler
Ariel Friedman
Marlene E. Furtick
Sheri B. Gold
William S. Goldberg
Nancy Golob-Schlessel
Faithe Gomez
Heather A. Gordon
Miriam C. and William J. Grinker
Judith Armour Grosz
Lou Grotta
Sylvia M. Gunn
Renee Roth Hano
Jo R. Hariton

Martha D. Hatcher
Karen G. Helf
Frances E. Heller
Dalma V. Heyn
Alonzo R. Hines
Annemarie Infosino
Linda R. Inwood
Elvira Jacob
Rhonda Jaffee
The Jericho Project
Dorinda M. Johnson-Angelo
Shirley Joan Jones
Wendy Anne Kallman-Frank
Elinor Leah Kass
Jeanette Y. Katz
Rugena King
Robert R. Kirk
Eleanore Korman*
KPMG Foundation
Deborah M. Krulewitch
E. Peter Krulewitch
Catherine La Chapelle
Celia T. and James C. Lang
Joann R. Lang
Latino Support, P.C.
Judith K. Lauterstein
Gloria A. Laycock
Howard Leifman*
David Lemonick & Mary Tuttle
Christopher J. Leonard
George G. Lewert
Trevor F. Lewis II
Joel Levy*
Emily Loft-Wagshal
Lois A. Macri
Johanna E. Maiorano
Delores Malloy
Karen L. Manasse
Noreen Mandell Hochberger
Richard W. Marek
Megan M. Marino
Leland Marks
Michael Marks
Milton Marks
Marilynn A. Mastrella
Cynthia S. May
Isalean McClary
Bailey Creech McDonald
Ellen Avvento-McGuinness
Bruce M. McGuire
Gwendolyn H. McKenzie
Linda A. Messina
Vera Michaels*
Angela Misthal
Allan S. Mohl
Moody's Corporation
Mark Morris
Jerry A. Moye
Rosemary T. Moynihan

The Silver School gratefully acknowledges the continuing support of **Connie** and **Martin Silver**.

* Signifies a member of the Dean's Advisory Council.

Muskingum County Community Foundation
Michele Muto
Cheryl A. Nastasio
Susan A. Nayowith
Marni M. Neuburger
Martin Novikov
Jane A. Ogbara
Trudy Owett
Gloria J. Tosi Paknis
Lisa S. and Joseph D. Paulauskis
David R. Payne
Nancy A. Payne
Amy Lynn Pepper-Mandell
Karla Perlman
Shara H. Perlman
Robert J. Peters
Kristina M. Petersen
Therese D. Piasecki
Peter Poulos
Fumi Matsuki Raith
Roopa S. Raman
Judith J. Rappaport
Lacy Ray, Jr.
Mary Alice Roberts
Yvonne C. Robinson
Jean M. Roemer
Christine Rollet
Gail D. Rosen
Carol L. Rosenberg
Susan Rothenberg Golub
Sharon J. Sakai
Mary Lynne Schiller
Emily J. Schlesinger
Maria T. Schreiber
Edward M. Schwartz
Samuel H. Schwimmer
Diane W. Seessel
Andrew L. Selig
Constance M. Seligman
Frances A. Shaver
Barbara Sicherman
Pamela D. Siemon
Denise Silverstein
Millicent Singer
Sisters of Charity
Yelena Sokolskaya
William Solodow
Sheila Solow
I. Barry Sorkin
Linda D. and David A. Sotnick
Trea A. Stanley
Ellen D. Stern
Susan Dowd Stone
Ilene Posner Sumberg
Robert J. Sweeney
Kristy A. Szemetylo
Ethel Gubkin Taft
Ida Tam
Cindy A. Tanenbaum
Doris S. Taylor
David L. Teicher
Lorraine Tempel
Hildonia M. Thomas
Rebecca Tillinghast
Ferne Traeger*
Allison Tynan Kravitz
Valene V. Valerie
Cindy Belch VanDermark
Gray Joseph Velasquez
Rosa E. Verdesoto
Carol Ann M. Verdi
Regina D. Wadkins
Catherine Ward Rankins
Rita P. Warner
Catherine Ann Warren
von Seggern

Sue S. Watson
Kate Wechsler
Annie R. Weinblatt
Diana Weir
Jayne M. Wesler
Robert West
Lassus Wherley
Guydon E. Wiegand
Kathleen D. Williams
Mary R. Windt
Wendy Winograd
Jeffrey and Deborah F. Wisoff
William J. Wood
Elaine S. Yatzkan
Rosanna Cox Zuckerman
Alice Rymer Zung
Russell L. Zygmunt

**Friends:
Up to \$99**

Helga Abel
Melissa L. Affronti
Mildred Mesch Allen
Scott Samuel Altabet
Nicole A. Altbaum
Steven M. Alvarez
American Express Foundation
Patricia L. Angeles
Judi W. Aronowitz
Ty G. Atkin
Michelle Band
Ashley C. Barney
Mark S. Baum
Stephen M. Baver
Jeanne M. Baykara
Cecilia W. Bell
Marjorie E. Berman
Carolynne J. Bethka
Victor V. Bianco
Philip Charles Bien
Carolyn A. Blake
Barbara P. Bleemer
Sandra E. Boland
Tasi A. Bolima
Judith S. Brauner
Sandra E. Brinkman
Adrienne Brown
Kadeedra C. Browne
Robin G. Burdulis
Janet L. Campbell
Laura and Robert J. Cannon
Susan Caputo
David Cardona-Jimenez
Beverly Pollard Carlock
Bernadette L. Carranza
Leone E. Caspler
Jeanette K. Caurant
Barbara A. Ceccarini
John L. Cella
Joan E. Cerny
Harvey Chambers
I-Ting Cheng
Kathleen Cheslok
Bernadette A. Claps
Jennifer R. Cohen
Janet H. Conciatore
John N. Craig
Ginger O'Dell Culbertson
Naomi V. Cutner
Teresa Ann Daly
Mario Dartayet-Rodriguez
Sheila Davidson
Cambao De Duong
Evelyn De La Cruz
Cynthia Orisel de La Rosa
Angela M. Dean
Panzy H. DeHart

Angela F. DeLuca
Maria DelVecchio Valerian
Gail M. Derivan
Richard R. Dickens
Dawn M. DiNardo-Lippi
Lynne E. Downing
Anne M. Druses
Amanda I. Echevarria
Amber E. Eltaieb
Barbara H. Engelbart
Margot F. Escott
Rosie M. Eugene
Exeter Counseling Center LLC
Robert W. Fasano
Leigh S. Fisher Savar
Carol Reidel Fontinell
Melanie D. Foxx
Alexandra Frank
Berton Klein Frank
Rosemary Galletti
Rhoda Galub
Felicia Gardner
Peter W. Gariti
Barbara J. and David M. George
Alfred S. Ginsberg
Alex Gitterman
Barbara J. Golby
Sara Goldberger
Phyllis C. Goldbetter
Geraldine B. Goldner
Roslyn M. Goldner
Sharon Beskin Goodman
Lawrence S. Graber
Nichole F. Graves-McLeod
Renee B. Gross
Lissa A. Grossman
Greta H. Gustafson
Susan E. Haberman-Cooke
Tana Hacken
Linda D. Hall
Xue Han
Cynthia R. Heller
Janis G. Heller
Gretchel Y. Hinton-Temba
Patricia A. Hopkins-Glatthaar
Rosalyn Novak Houston
Ilona A. Hress
Sandra D. Hudson
Nancy McMaster Hughes
Nicholas Humen
Michelle Cluster Jacobson
Judith Jaffe
Carley A. Jean-Charles
Janet E. Jenkins
Gloria A. Johnson
Marilyn Johnson
Symone Johnson
Arthur J. Kalen
Joseph H. Kames
Gary C. Karshmer
Isabelle H. Kaufman-Mesholam
Kathleen P. Keane
Beth M. Kelley
Aaron A. Kirchner-Loeser
Anuradha D. Kowolik
Tasha Kozak
Nancy J. Krell
Wendy E. Kugelmann
Fran Lacas
Patricia S. Lane
Mary F. Layden
Julia P. Leavitt
Irene Lee
Naomi Leiseroff
Bertram Lev
Amy L. Levine
Kate S. Levine

Young M. and Do Y. Lim
Michelle Y. Lim
Pearl A. Lindenbaum
Rosemarie Lobretto
Brooke K. Mann
Anlee Marcus
Hilary Marshak
Jane Martin
Alicia Martinez
Michael E. Matthews
Paul J. Mayglothling
Eileen McCartin
Elizabeth J. McCloskey
William C. McGrath
Angela McGuire
Joanne McLean
Patricia McVeigh-O'Dell
Joseph Carlos Melendez
Jed W. Metzger
Colleen A. Mielke
Barbara K. Miliano
Naomi L. Miller
Noel Miller
Susan K. Miller
Suzanne B. Miller
Valerie Jean Miller
Diane Mirabito
Patience Moore*
Sacha Evalena Moore
Linda L. Morley
Helen N. Morris
Helena Motyka
Irena Motyka
Ann L. Muder
Abigail Nathanson
Alan S. Neuberger
Janee A. Newsome
Dorene Ng
Rivka Nissel
John D. Oddo
Gwenelle Styles O'Neal
Sylvia T. Ortiz
James R. Pagett
Sandra Parness
Angela R. Passaro
Caroline S. Pence
Elizabeth Perrella
Joseph D. Picini
Cacilda Pinto
Francine Pollack
Heather L. Pollinger
Jean Neuenhaus Preis
Gary M. Prottas
Sandra L. Quiros
Jennifer Raiten
Sharon Rebell
Emely M. Recio
Karen Horowitz Reis
Marjorie A. Rice
Patricia C. Rincon
Sheray M. Roberts
Judy Rogers
Joyce Rose Romm
Joan L. Rosenbaum
Francine S. Rosenstein
Sheila N. Rowe Hall
Helen L. Rozanski
Fern Slovin Rudorfer
Vincent T. Ruisi
Amanda Rose Sacks
Jerry Sander
Frances V. Saxenberg
Winston M. Schepps
Louis Schneider
Frederick F. Schock
Miriam M. Scholl
Gloria E. Schreiner

Marci A. Schwartz
Cynthia M. Schwartzberg
Carole Sclar
Jeremy M. Seaver
Rita B. Seclow
Sandrina Seraphin
Anthony Serio
Gina L. Sharpe
Kate M. Sherman
Shoshana Silverman
James J. Silvestri
Rita Simmons
Robert V. Sindoni
Joan L. Smith
Donna Raucher Snyder
Linda Gayle Snyder
Renee Solomon
Jerome and Joyce Solovay
Lorraine T. Soltis
Yvonne E. Somerville
Christine D. Speck
Elaine Ravel Spiro
Leslie H. Spivak
Tammy L. St. Clair
Margaret Staiano
Sarah F. Stapleton
Jessica Ann Starek
Judith T. Stone
Cynthia M. Strauss
Jane S. Sturges
Jill M. Sukenick
Alan S. Sunshine
Lita M. Talbot
Rachelle M. Tapfar
Kelly M. Taylor
Thomas Scott Taylor
Carol S. Thea
Reginald A. Thompson
Lily M. Tom
Calixta S. Torres
Sarah Urech
Laura A. Van Dyke
Lisa A. Veglia
Inge Wagner
Jocelyn Walls
Lynne Beers Walters
Ann B. Webre
Elinor R. Weidenfeld
Christopher M. Wesolowski
Gwendolyn J. West
Alicia White
Olivia Wilks-Duerr
Kristen Willgren
Holly Dee Wilson
Genie Wing
Carole Anne Winston
Heidi Wiste
LaShell Wooten
Karen Wright*
Jianming H. Wu
Richard L. Zaslow
Shirley Zhang
Rui Zhou
Xin Zhou
Elaine T. Ziegler
Enid L. Zuckerman

Disclaimer:
If you were an NYU Silver contributor between September 1, 2014, and August 31, 2015, and find your name missing, misspelled, or listed under the wrong heading, please accept our apologies. Help us correct our records by contacting Karen Wright at (212) 998-6924 or karen.wright@nyu.edu.

Faculty Publications 2014-2015

Payne, N. A., & **Anastas, J. W.** (2014). The mental health needs of low-income pregnant teens: A nursing-social work partnership in care. *Research on Social Work Practice*. (published online first Aug. 17, 2014). DOI: 10.1177/1049731514545656.

Anastas, J. W. (2015). Clinical social work, science, and doctoral education: Schisms or synergy? *Clinical Social Work Journal*. (published online). DOI: 10.1007/s10615-015-0534-5.

Park, S. Y., **Anastas, J.**, **Shibusawa, T.**, & Nguyen, D. (2014). The impact of acculturation and acculturative stress on alcohol use across Asian immigrant subgroups. *Substance Use and Misuse*, 48(8), 922-931.

England, S., & Rust, M. (2015). Sweet old things: Moral complexities in old age in Muriel Spark's *Memento Mori*. *Journal of Aging Studies*, 33, 76-85.

Festinger, T. (2014). Adoption disruption: Rates, correlates, and service needs. In G. P. Mallon & P. M. Hess (Eds.), *Child Welfare for the 21st Century: A Handbook of Practices, Policies, and Programs* (2nd ed.). New York, NY: Columbia University Press.

Goldin, L., Copeland, R., & Padilla, D. (2015) Behind Maya doors: Gender violence, acceptance, and resistance in Highland Guatemala. *Gendered Perspectives in International Development*, 305.

Guilamo-Ramos, V., Lee, J., & **Jaccard, J.** (2015). Parent-adolescent communication about contraception and condom use: Making the case stronger for why parents matter. *Journal of the American Medical Association, Pediatrics*. In press.

Guilamo-Ramos, V., Lee, J., Ruiz, Y., Hagan, H., Delva, M., Quiñones, Z., Kamler, A., & Robles, G. (2015). Illicit drug use and HIV risk in the Dominican Republic: Tourism areas as drug use opportunities. *Global Public Health*, 1-13. DOI: 10.1080/17441692.2014.966250.

Holloway, I. W., Padilla, M. B., Willner, L., & **Guilamo-Ramos, V.** (2014). Effects of minority stress processes on the mental health of Latino men who have sex with men and women. *Archives of Sexual Behavior*. DOI: 10.1007/s10508-014-0424-x.

Muñoz-Laboy, M., Worthington, N., Perry, A., **Guilamo-Ramos, V.**, Cabassa, L., Lee, J., & Severson, N. (2014). Socio-environmental risks for untreated depression among formerly incarcerated Latino men. *Journal of Immigrant Minority Health*, 16(6), 1183-1192. DOI: 10.1007/s10903-013-9814-8.

Guilamo-Ramos, V., Kim, C., Bowman, A., & Muñoz-Laboy, M. (2015). Culturally appropriate engagement and service delivery with Puerto Ricans: A transnational approach to enhance linkages to HIV primary care. New York, NY: The Center for Latino Adolescent and Family Health, NYU Silver School of Social Work; Transitional Health Care Coordination; NYC DOHMH Correctional Health Services.

Han, W-J., & **Shibusawa, T.** (2015). Trajectory of physical health, cognitive function, and psychological well-being among Chinese elderly. *Archives of Gerontology and Geriatrics*, 60(1), 168-177.

Huerta, M. C., Adema, W., Baxter, J., **Han, W-J.**, Lausten, M., Lee, R., & Waldfogel, J. (2014). Fathers' leave and fathers' involvement: Evidence from four OECD countries. *European Journal of Social Security*, 16(4), 308-346.

Lee, R., Zhai, F., Brooks-Gunn, J., **Han, W-J.**, & Waldfogel, J. (2014). Is participation in Head Start associated with less maternal spanking for boys and girls? *Children and Youth Services Review*, 46, 55-63.

Lee, R., Zhai, F., Brooks-Gunn, J., **Han, W-J.**, & Waldfogel, J. (2014). Head Start participation and school readiness: Evidence from the Early Childhood Longitudinal Study-Birth Cohort. *Developmental Psychology*, 50(1), 202-215.

Li, J., Johnson, S. E., **Han, W-J.**, Kendall, G., Strazdins, L., Dockery, A., & Andrews, S. (2014). Parent's shift work and children's wellbeing: A critical review of the literature. *Journal of Primary Prevention*, 35(1), 53-75.

Holden, G., Barker, K., Kuppens, S., & Rosenberg, G. (in press). Self efficacy regarding social work competencies. *Research on Social Work Practice*.

Blanton, H., Burrows, C., & **Jaccard, J.** (2015). To accurately estimate implicit influences on health behavior, accurately estimate explicit influences. *Health Psychology*. In press.

Pettit, J. W., Silverman, W. K., Rey, Y., Marin, C., & **Jaccard, J.** (2015). Moving to second stage treatments faster: Identifying midtreatment tailoring variables for youth with anxiety disorders. *Journal of Clinical Child and Adolescent Psychology*. In press.

Lackner, J., **Jaccard, J.**, Keefer, L., Firth, R., Carosell, A., Sitrin, M., & Brenner, D. (2015). The accuracy of patient reported measures for GI symptoms: A comparison of real time and retrospective reports. *Neurogastroenterology and Motility*. In press.

Oswald, F. L., Mitchell, G., Blanton, H., **Jaccard, J.**, & Tetlock, P. (2015). Using the IAT to predict ethnic and racial discrimination: Small effect sizes of unknown importance. *Journal of Personality and Social Psychology*, 108, 562-571.

Blanton, H., **Jaccard, J.**, Strauts, E., Mitchell, G., & Tetlock, P. (2014). Toward a meaningful metric of implicit prejudice. *Journal of Applied Psychology*, 100, 1468-1481.

Blanton, H., **Jaccard, J.**, & Burrows, C. (2014). Implications of the IAT D-transformation for psychological assessment. *Assessment*, 22, 429-440.

Zhao, D., & **Jin, M.** (2015). Social innovations on land use in rural China: An asset-based analysis. In M. Sherraden, L. Zou, B. H. Ku, S. Deng, & S. Wang (Eds.), *Asset-Building Policies and Innovations in Asia*. Routledge.

Lieberman, L., **Lausell Bryant, L.**, & Boyce, K. (2015). Family preservation and healthy outcomes for pregnant and parenting teens in foster care: The Inwood House theory of change. *Journal of Family Social Work*, 18(1), 21-39.

Lieberman, L., **Lausell Bryant, L.**, Boyce, K., & Beresford, P. (2014). Pregnant teens in foster care: Challenges and implications for conducting research with vulnerable populations. *Journal of Public Child Welfare*, 8(2), 143-163.

Faculty Publications 2014-2015

Schuler, B. R., Lee, B. R., Kolivoski, K. M., Attman, N. P., & **Lindsey, M. A.** (in press). Implementing a modular evidence based practice in child welfare: Effects and obstacles. *Research on Social Work Practice*.

Smith, M. E., **Lindsey, M. A.**, Williams, C., Medoff, D., Lucksted, A., Fang, L. J., Schiffman, J., Lewis-Fernandez, R., & Dixon, L. (in press). Racial differences in the experiences of family members of persons with mental illness. *American Journal of Community Psychology*.

Rose, T., **Lindsey, M. A.**, & Nebbitt, V. E. (2014). Implications to practice and service use among African American youth living in public housing. In V. E. Nebbitt (Ed.), *Context Matters: Psychological Functioning and Health Behavior in African American Adolescents Living in Public Housing Neighborhoods*. New York, NY: Columbia University Press.

Lever, N., **Lindsey, M. A.**, Grimm, L., & Weist, M. D. (2014). Preservice training for school mental health clinicians. In M. D. Weist et al. (Eds.), *Handbook of School Mental Health: Research, Training, Practice and Policy*. New York, NY: Springer Publishing Company.

Diep, C., **Lu, W.**, Goodson, P., Guidry, J. J., Murano, P. S., Liew, J., & McKyer, E. J. L. (2015). Influences of fruit and vegetable intake among Asian youth on Texas WIC. *Health Behavior and Policy Review*. In press.

Lu, W., Diep C., & McKyer, E. L. J. (2015). Risk factors for childhood obesity among Asian-Americans: A systematic review of literature and recommendations for health care research. *Journal of Health Care for the Poor and Underserved*, 26(2), 171-190. DOI: 10.1353/hpu.2015.0056.

Xu, L., & **Lu, W.** (2015). Emotional factors affecting Taiwanese parents' decision-making regarding autism genetic testing. *International Journal of Recent Scientific Research*, 6(5), 4141-4148.

Lu, W., Lee, C., McKyer, E. L. J., Ory, M. G., Goodson, P., & Wang, S. (2015). Active commuting to school: An interplay of self-efficacy, social economic disadvantage, and environmental constraints. *International Journal of Behavioral Nutrition and Physical Activity*, 12(29). DOI: 10.1186/s12966-015-0190-8.

Lu, W., McKyer, E. L. J., Lee, C., Ory, M. G., Goodson, P., & Wang, S. (2014). Perceived barriers of children's active commuting to school: A systematic review of empirical, methodological and theoretical evidence. *International Journal of Behavioral Nutrition and Physical Activity*, 11(140). DOI: 10.1186/s12966-014-0140-x.

Lu, W., McKyer, E. L. J., Lee, C., Wang, S., Goodson, P., & Ory, M. G. (2014). Active commuting to school: A test of an integrative model of behavior prediction. *American Journal of Health Behavior*, 38(6), 900-913.

Tisone, C. A., Guerra, S. A., **Lu, W.**, McKyer, E. L. J., Ory, M., Dowdy, D., Wang, S., Miao, J., Evans, A., & Hoelscher, D. (2014). Food-shopping environment disparities in Texas WIC vendors: A pilot study. *American Journal of Health Behavior*, 38(5), 726-736.

Lu, W., Miao, J., & McKyer, E. L. J. (2014). A primer on bootstrap factor analysis as applied to health studies research. *American Journal of Health Education*, 45(4), 199-204.

Lu, Y. E., & Liu, H. L. (2014) Indigenization of social work direct-practice in China: From the perspective of Confucianism. *Journal of East China University of Science & Technology*, 14(4).

Abell, M., Shoeneman, A., **Manuel, J. I.**, & Al Khalaf, S. (2015). Student attitudes towards religious diversity and implications for multicultural competence. *Journal of Religion and Spirituality in Social Work*, 34, 91-104.

Finnerty, M., **Manuel, J. I.**, Stellato, C., Zanger, A., Miracle, A., Reddy, H., & Reber, C. (2015). Clinicians' perceptions of challenges and strategies of transition from assertive community treatment to less intensive services. *Community Mental Health Journal*, 1, 85-95.

Manuel, J. I., Gandy, M., & Rieker, D. (2015). Trends in hospital discharges and dispositions for episodes of co-occurring severe mental illness and substance use disorders. *Administration and Policy in Mental Health and Mental Health Services Research*, 42, 168-175.

Walsh, J., & **Manuel, J.** (in press). Clinical case management. In A. R. Roberts (Ed.), *Social Workers' Desk Reference* (3rd ed.). New York, NY: Oxford.

Martin, J. I., & Alessi, E. J. (in press). Self psychology. In N. Coady & P. Lehmann (Eds.), *Theoretical Perspectives in Direct Social Work Practice: An Eclectic-Generalist Approach* (3rd ed.). New York, NY: Springer.

Roh, S., Brown-Rice, K. A., Lee, K. H., Lee, Y. S., Lawler, M. J., & **Martin, J. I.** (2015). Stressors, coping resources, and depression among American Indian older adults. *Social Work in Public Health*. (advance online publication). DOI: 10.1080/19371918.2015.1019174.

Lynn, C. J., Acri, M. C., Goldstein, L., Bannon, W., Beharie, N., & **McKay, M.** (2014). Improving youth mental health through family-based prevention in family homeless shelters. *Children and Youth Services Review*, 44, 243-248.

Olin, S., Chor, B., Weaver, J., Duan, N., Kerker, B., Clark, L., Cleek, A., **McKay, M.**, & Hoagwood, K. (2014). Multilevel predictors of clinic adoption of state-supported trainings. *Psychiatric Services*. (published online first Aug. 1, 2014). DOI:10.1176/appi.ps.201300535.

Mellins, C., Nestadt, D., Bhana, A., Petersen, I., Abrams, E., Alicea, S., Host, H., Myeza, N., John, S., Small, L., & **McKay, M.** (2014). Adapting evidence-based interventions to meet the needs of adolescents growing up with HIV in South Africa: The VUKA case example. *Global Social Welfare: Research Policy & Practice*, 1, 97-110.

Umpierre, M., Meyers, L., Ortiz, A., Paulino, A., Rivera Rodriguez, A., Miranda, A., Rodriguez, R., Kranes, S., & **McKay, M.** (2014). Understanding Latino parents' child mental health literacy: Todos a bordo/All aboard. *Research on Social Work Practice*. (published online first Aug. 28, 2014).

Gopalan, G., Chacko, A., Franco, L., Dean-Assael, K., Rotko, L., Marcus, S., & **McKay, M.** (2014). Multiple family group service delivery model for youth with disruptive behaviors: Child outcomes at 6 month follow-up. *Journal of Child & Family Studies*. (published online first Nov. 23, 2014). DOI: 10.1007/s10826-014-0074-6.

Faculty Publications 2014-2015

Chacko, A., Gopalan, G., Franco, L., Dean-Assael, K., Jackson, J., Marcus, S., & **McKay, M.** (2014). Randomized clinical trial of multiple family group service model for children with disruptive behavior disorders. *Journal of Emotional and Behavioral Disorders*. (published online May 1, 2014). DOI: 10.1177/106346614532690.

Ibrahim, A., Esena, R., Aikins, M., O'Keefe, A., & **McKay, M.** (2015). Assessment of mental distress among prison inmates in Ghana's correctional system: A cross-sectional study using the Kessler Psychological Distress Scale. *International Journal of Mental Health Systems*, 9(17), 1-6.

Beharie, N., Lennon, M., & **McKay, M.** (in press). Assessing the relationship between the perceived shelter environment and mental health among homeless caregivers. *Behavioral Medicine*.

Merritt, D. H., & Snyder, S. (in press). Correlates of optimal behavior among child welfare involved children: Perceived school peer connectedness, activity participation, social skills and peer affiliation. *Journal of Orthopsychiatry*.

Snyder, S., & **Merritt, D. H.** (in press). The effect of child neglect on emerging adults' drinking. *Substance Use and Misuse*.

Snyder, S., & **Merritt, D. H.** (in press). The influence of supervisory neglect on subtypes of emerging adult substance use after controlling for familial factors, relationship status, and individual traits. *Substance Abuse*.

Merritt, D. H., & Klein, S. (2015). Do early care and education services improve language development for maltreated children? Evidence from a national child welfare sample. *Child Abuse and Neglect*, 39, 185-196.

Merritt, D. H., & Snyder, S. (2014). Maltreatment type and behaviors: Does listening matter? *Child Abuse and Neglect*, 38, 2062-2071.

Snyder, S., & **Merritt, D. H.** (2014). Do childhood experiences of neglect affect delinquency among child welfare involved youth? *Children and Youth Services Review*, 46, 64-71.

Cole, A., Kim, H., Lotz, K., & **Munson, M. R.** (in press) Worker's perception of engagement among youth and young adults with mental health difficulties. *Social Work in Mental Health*.

Munson, M. R., Brown, S., Spencer, R., Tracy, E., & Edguer, M. (2015). Supportive relationships during the transition to adulthood among former system youth. *Journal of Adolescent Research*.

Narendorf, S., **Munson, M. R.**, & Floersch, J. (2015) Psychotropic medication treatment among young adults: Thematic and narrative analysis. *Journal of the Society for Social Work and Research*, 6(1).

Munson, M. R., Cole, A., **Jaccard, J.**, Kranke, D., Farkas, K., & Frese, F. (in press, e-publication available). Just Do You: An engagement intervention for young adults utilizing recovery role models. *Journal of Behavioral Health Services and Research*. DOI: 10.1007/s11414-014-9424-9.

Munson, M. R., Narendorf, S., Zajac, K., & Cole, A. (2015). Treating common behavioral health concerns in young adulthood. In C. Juntunen (Ed.), *Counseling Across the Lifespan* (2nd ed.). Thousand Oaks, CA: Sage Publications.

Henwood, B. F., Derejko, K., & **Padgett, D. K.** (2015). Maslow and mental health recovery: A comparative study of homeless programs for adults with serious mental illness. *Administration and Policy in Mental Health*, 42, 222-228.

Henwood, B. F., Stefancic, A., Petering, R., Schreiber, S., **Padgett, D. K.**, & Abrams, C. (online 2014). Social relationships of dual diagnosed homeless following enrollment in housing first or usual treatment services. *Journal of the Society for Social Work and Research*.

Tran Smith, B., **Padgett, D. K.**, Brown, M., & Henwood, B. F. (2015). Rebuilding lives and identities: The role of place in mental health recovery. *Health & Place*, 33, 109-117.

Choy-Brown, M., **Padgett, D.**, Tran Smith, B., & Tiderington, D. (in press). Sorting it out: Eliciting consumer priorities on recovery in supported housing. *American Journal of Psychiatric Rehabilitation*.

Roh, S., Lee, Y-S., Lee, K. H., **Shibusawa, T.**, & Yoo, G. J. (in press). Friends, depressive symptoms, and life satisfaction among older Korean Americans. *Journal of Immigrant and Minority Health*.

Shibusawa, T., Iwano, S., Kaizu, K., & Kawamuro, Y. (2014). Self-reported mistreatment among Japanese elders receiving respite care. *Journal of Maltreatment and Aggression & Trauma*, 23, 67-80.

Siegel, J. P. (2015). Emotional regulation in adolescent substance use disorders: Rethinking risk. *Journal Child & Adolescent Substance Abuse*, 24(2), 67-79.

Siegel, J. P. (in press). Object relations couple therapy. In A. S. Gurman, J. Lebow, & D. Snyder (Eds.), *The Clinical Handbook of Couple Therapy*. New York, NY: Guilford.

Choy-Brown, M., **Stanhope, V.**, Tiderington, E., & **Padgett, D. K.** (2015). Unpacking clinical supervision in transitional and permanent supportive housing: Scrutiny or support?. *Administration and Policy in Mental Health and Mental Health Services Research*, 1-9.

Stanhope, V., **Videka, L.**, Thorning, H., & **McKay, M.** (2015). Moving toward integrated health: An opportunity for social work. *Social Work in Health Care*, 54(5), 383-407. DOI: 10.1080/00981389.2015.1025122.

Stanhope, V., Tondora, J., Davidson, L., Brown, M. C., & Marcus, S. C. (2015). Person-centered care planning and service engagement: A study protocol for a randomized controlled trial. *Trials*, 16(1), 180.

Stanhope, V., & Henwood, B. (2014). Activating people to address their health care needs: Learning from people with lived experience of chronic illnesses. *Community Mental Health Journal*, 50, 656-663.

Faculty Publications 2014-2015

Wiechelt, S., & **Straussner, S. L. A.** (Eds.). (in press). *Examining the Relationship between Trauma and Addiction*. Oxfordshire, England: Taylor & Francis.

Straussner, S. L. A. & Donath, R. (in press). Children and teens with substance-abusing parents. In N. B. Webb (Ed.). *Play Therapy with Children in Crisis* (4th ed.): New York, NY: Guilford Press.

Einstein, S., **Straussner, S. L. A.**, Johnson, T. P., & Gartside, W. (in press). Evidence-informed, evidence not used: A pilot study of a sustained flawed process and unfinished business. *Substance Use and Misuse*.

Guarino, H., Marsch, L., Deren, S., **Straussner, S. L. A.**, & Teper, A. (in press). Opioid use trajectories, injection drug use and HCV risk among young adult immigrants from the former Soviet Union living in New York City. *Journal of Addictive Disorders*.

Tosone, C. (in press). Personal trauma and its impact on professional practice. *Private Practice: NASW Specialty Practice Sections Newsletter*.

McTighe, J., & **Tosone, C.** (2014). In the long shadow of 9/11: Narratives of Manhattan clinicians' efforts to make meaning of a shared trauma. *Social Work in Mental Health*. DOI: 10.1080/15332985.2014.977420.

Tosone, C., Bauwens, J., & Glassman, M. (2014). Measuring shared trauma and professional posttraumatic growth: A preliminary study. *Research on Social Work Practice*. DOI: 10.1177/1049731514549814.

Rosenthal Gelman, C. (Executive Producer/Writer/On Screen Supervisor), **Tosone, C.** (Executive Producer/Writer), & McVeigh, L. (Producer & Director). (2015). *Helping Hands: The Participant Directed Approach to Care*. [Training Film/DVD]. United States: Boston College Center for Participant-Directed Services.

Tuchman, E. (2015). Women's injection drug practices in their own words: A qualitative study. *Harm Reduction Journal*, 12(6), 1-8.

Rajendran, K., Smith, B. D., & **Videka, L.** (2015). Association with caregiver social support, permanency, and well-being of children in child welfare. *Children and Youth Services Review*, 48 (January), 150-158. DOI: 10.1016/j.childyouth.2014.12.012.

Corrigan, M. J., **Videka, L.**, Loneck, B., Newman, L. J., & Rajendran, K. (2014). Characteristics of student assistance and prevention counseling programs in response to environmental impacts. *Journal of Child and Adolescent Substance Abuse*, 23(6), 407-413. DOI: 10.1080/1067828X.2014.928141.

Wakefield, J. C., & Demazeux, S. (in press). Depression: One and many. In J. C. Wakefield, & S. Demazeux (Eds.), *Distinguishing Sadness from Depression: Psychiatric Diagnosis of Depressive Disorder Reconsidered*. Dordrecht, Netherlands: Springer Science, History, Philosophy and Theory of the Life Sciences Series.

Wakefield, J. C., & Schmitz, M. F. (in press). The measurement of mental disorder. In T. Scheid, & T. Brown (Eds.), *A Handbook for the Study of Mental Health: Social Contexts, Theories, and Systems* (3rd ed.). New York, NY: Cambridge University Press.

Wakefield, J. C. (in press). DSM-5 substance use disorder: How conceptual missteps weakened the foundations of the addictive disorders field. *Acta Psychiatrica Scandinavica*.

Wakefield, J. C. (in press). Mental disorder as harmful dysfunction. *Philosophy, Ethics, and Humanities in Medicine*.

Wakefield, J. C. (in press). Social construction, biological design, and mental disorder. *Philosophy, Psychiatry, and Psychology*.

Wakefield, J. C. (2015). DSM-5, psychiatric epidemiology, and the false positives problem. *Epidemiology and Psychiatric Science*, 13, 1-9.

Wakefield, J. C. (2015). Psychological justice: DSM-5, false positive diagnosis, and fair equality of opportunity. *Public Affairs Quarterly*, 29(1), 32-75.

Wakefield, J. C. (2015). The harmful dysfunction model of alcohol use disorder: Revised criteria to improve the validity of diagnosis and prevalence estimates. *Addiction*. (published online first Jan. 26, 2015). DOI: 10.1111/add.12859.

Wakefield, J. C. (2015). Symptom data reanalysis disconfirms Parker et al.'s claim that latent class analysis identifies melancholic depression. *Acta Psychiatrica Scandinavica*. (published online first Mar. 7, 2015). DOI: 10.1111/acps.12413.

Wakefield, J. C. (2014). DSM-5 changes and controversies: The headline news, part 3. *Intersections in Practice 2014*, 20-23. Washington, DC: National Association of Social Workers.

Wakefield, J. C. (2014). DSM-5 changes and controversies: The headline news, part 2. *Intersections in Practice 2014*, 16-19. Washington, DC: National Association of Social Workers.

Wakefield, J. C. (2014). DSM-5 changes and controversies: The headline news, part 1. *Intersections in Practice 2014*, 12-15. Washington, DC: National Association of Social Workers.

Wakefield, J. C., & Schmitz, M. F. (2014). Corrigendum: How many people have alcohol use disorders?: Using the harmful dysfunction analysis to reconcile prevalence estimates in two community surveys. *Frontiers in Psychiatry*, 5(144). DOI: 10.3389/fpsy.2014.00144.

Wakefield, J. C., & Schmitz, M. F. (2014). Uncomplicated depression is normal sadness, not depressive disorder: Further evidence from the NESARC. *World Psychiatry*, 13(3), 317-319.