



Your Neighborhood Association (pg 3-6):

- Arnold Creek
- Ashcreek
- Bridlemile
- Collins View
- Crestwood
- Far Southwest
- Hayhurst
- Hillsdale
- Homestead
- Maplewood
- Markham
- Marshall Park
- Multnomah
- South Burlingame
- South Portland
- Southwest Hills Residential League
- West Portland Park

Westside Candidates Forum



Tuesday, March 29
Multnomah Arts Center 7688
SW Capitol Hwy.

6:15-7:00 pm
Meet-and-greet with candidates
7:00-8:45 pm
Forum

Get to know the candidates for mayor and city council.
Let them know your concerns.

Fill out the online survey to suggest a forum discussion topic:

<https://www.surveymonkey.com/r/JGWV35W>

or, contact SWNI at 503-823-4592 or info@swni.org

Candidates for Mayor

- Ted Wheeler
- Jules Bailey
- Steven J. Entwisle
- Lew Humble
- David Schor
- Trevor Manning
- David 'The Ack' Ackerman
- Jessie Sponberg
- Sean Davis
- Sarah Iannarone
- Bim Ditson
- Deborah Harris

Candidates for City Council Commissioner Position #1

- Amanda Fritz

Candidates for City Council Commissioner Position #4

- Michael Darrow
- Joseph Puckett
- Fred Stewart
- Shannon Estabrook
- James Bernard Lee
- Steve Novick
- Susan Stahl
- Stuart Emmons
- Chloe Eudaly



We have invited ALL the mayoral and city council candidates and have confirmation from the above candidates as of press time.

Nine Small Grant projects awarded funds in 2016!

by Southwest Neighborhoods, Inc. Executive Director Sylvia Bogert

Southwest Neighborhoods, Inc. (SWNI) received 14 proposals totaling \$17,664.84 in grant requests from neighborhood associations and community groups. SWNI was given \$10,676 by the Office of Neighborhood Involvement to distribute as 2016 Neighborhood Small Grants. In addition, SWNI had \$611 in unused 2015 grant dollars so a total of \$11,287 was available for 2016 projects. Southwest Neighborhoods looks forward to working with the following organizations that share our goal of building livable, equitable, and sustainable neighborhoods and communities.

Native American Beading Class: \$600

South Portland Neighborhood Association

Project Coordinator Laura Campos will organize and promote a class that will teach the technical aspects of Native American beading and provide a tangible experience of doing crafts within a native society. Native American beading functions in native society in celebrations, traditional ceremonies and trade. While the participant is shown how to bead, they will listen to stories on the uses of beading, including protocol and manners.

Improving Tech Equity in SW School Families: \$940

SWNI Schools Committee

This project will work toward closing the digital divide by leveraging neighborhood and school resources to improve the use of technology by families of students in our schools who need additional identified resources.

Bringing Collins View Neighbors Together to Restore Native Conifer Canopy: \$1,428

Collins View Neighborhood Association

This project reaches out to neighbors to educate, encourage and organize them to plant more native conifers creating more community cohesiveness, greater interconnectivity with the surrounding natural areas and a better quality of life. The project hopes to involve new neighbors, which include young singles and families, LGBT households, and greater ethnic and racial diversity.

Empowering Seniors to Thrive in their Homes in SW Portland: \$1,229

SW Portland/River West Village

The proposed project has two primary goals: 1) identify and include in our community a larger cross-section of seniors living in SW Portland, especially those who are disadvantaged by virtue of physical limitations related to age or income, and 2) increase the visibility of River West Village in SW Portland among business associations, small businesses, and nonprofit organizations that serve seniors and the general public.

Jackson MS SUN Community School Activity Bus: \$2,000

Neighborhood House, Inc.

The Jackson Middle School SUN program offers academic, extracurricular and social support services on campus for the most vulnerable student populations and their families. Funding for the after-school bus service, ensuring that transportation is not a barrier for SUN access and participation

Continued on page 2

NONPROFIT ORG.
U.S. POSTAGE PAID
PORTLAND, OR
PERMIT NO. 1348

Southwest Neighborhoods, Inc.
7688 SW Capitol Hwy
Portland, OR 97219

Patty Lee Leadership Training

Saturday, March 5, 9:00 am - noon

Multnomah Arts Center, 7688 SW Capitol Hwy.
Room 30, in the Senior Center wing of the building.

Doors open 8:45 am. Enjoy hot beverages, fruit, rolls, and conversation.



Have you ever wondered about the particulars of conflict-of-interest or conflict-of-loyalty issues within your organization? Do you have a code of ethics for your group or would you like to develop one? These are some of the issues that will be discussed at the Patty Lee Leadership training.

Additionally, find out how to have a successful neighborhood event. Share lessons learned - what worked, what didn't work?

Distributed information regarding conflict-of-interest and conflict-of-loyalty was compiled by nonprofit attorney Cindy Cumfer and presented by SWNI Executive Director, Sylvia Bogert.

This training is open to all interested individuals.

Southwest Neighborhoods, Inc. (SWNI) established the Patty Lee Leadership Fund to allow SWNI to provide leadership training for all southwest Portland residents, especially the underrepresented. These trainings aim to make people feel welcome while broadening public participation and citizen involvement.

Patty had a long history of involvement in the Ashcreek Neighborhood Association and on the SWNI board. Her passion was effective, involved, responsible volunteer action for the improvement of Portland neighborhoods and city government.



Patricia Alison Brownell Lee
1923-2012

Sam's Corner



Sam Pearson, president
Southwest Neighborhoods, Inc.
sfjpr1@gmail.com

The sun came up over Siletz Mountain at the coast this morning and it was glorious, bright pinks against the blue sky. The redtail hawk that calls the Fogarty Creek estuary home is just starting to soar as the winds come up, and as we watch this spectacle I could not help but notice that the windows on our place here at the coast need that spring cleaning touch.

The question comes up, do I take care of the windows on a day when the temperature is supposed to be 67 degrees or do I sit down and write my article for the paper? Quite the quandary, because I must also decide what subject to write about.

In the SWNI neighborhood, the mayor has come to our house and sat down

for a little town hall on the Temporary Sears Shelter. We are halfway on our six months as a houseless shelter. The mayor announced that the shelter will close on May 23rd and residents will transition to other yet to be determined sites. The ADA improvements continue to be implemented, including an elevator for the building. Some additional funding for other required ADA improvements will be included in the City's Fiscal Year 16-17 budget. Eventually the facility will open as an Emergency Management Center.

The comprehensive plan is almost done, yet "next phase" implementation projects keep going on. The end of this plan will not really be complete till the end of the year. The Southwest Corridor Plan has been further delayed with much yet to be determined.

Back to thoughts of cleaning. As you may or may not know, SWNI's Spring Cleanup is scheduled for May 7th. Items taking up space in your garage or sitting in the yard can be brought to the cleanup and disposed of properly. We will accept scrap metal, bulky waste, yard debris and reusable household items.

My wife just told me that no matter how I try to improve this article, the windows need some attention. Sorry, got to go...water and Windex on, squeegee off...wipe frames... the calming effect needed in our daily life as a volunteer.

CBO to host budget forums

Jessica Kinard, Principal Financial Analyst, City Budget Office

This year, the City Budget Office (CBO) is hosting two budget forums:

Tuesday, April 5th

6:30-8:30pm
Wilson High School
1151 SW Vermont St

Tuesday, April 12th
6:30-8:30pm
Alice Ott Middle School
12500 SE Ramona St

Our website is a great resource for current and past budget documents:
<http://www.portlandoregon.gov/cbo>

DREAM DESIGN BUILD

What's **your** dream? More room for the family? A larger kitchen? Overcoming your permit or budget constraints? Give us a call! We listen and we welcome design challenges... like this Sandy River Renovation. *Dream Design Build*

NICK WEITZER COMPANY
www.nwcpdx.com (503) 251-9900 2038 SE Cesar Chavez Blvd

Neighborhood Small Grants

Continued from page 1

Tryon Creek Watershed Wide Restoration Event: \$2,000

Tryon Creek Watershed Council
The Watershed Wide Restoration Event is a community-building event centered around watershed stewardship. Through the bringing together of diverse partners, participants will be encouraged to interact with the larger community in Southwest neighborhoods in hands-on restoration work (removing invasive weeds and planting native trees and shrubs) at approximately eight sites.

RGMS SUN MakerSpace

Start-Up: \$530
Hillsdale/Robert Gray Middle School & SUN

The RGMA SUN MakerSpace will increase the number and diversity of people involved in this community and neighborhood, a major focus of SUN Community School. "A makerspace is a physical location where people gather to share resources and knowledge, work on projects, network, and build. Makerspaces provide tools and space in a community environment. Expert advisors may be available some of the time, but often novices get help from other users. The makerspace is often associated with fields such as engineering, computer science, and graphic design. The concept emerges from technology-driven 'maker-culture,' associated with Make magazine and the Make Faires it promotes." (Educause 2013)

South Burlingame NET Cache Box Items for Neighborhood Emergency Preparedness: \$1,416

South Burlingame Neighborhood Association Neighborhood Emergency Team (SBNA NET)

The SBNA NET will conduct an outreach plan to establish relationships with local churches, schools, the fire station, community center, and businesses within SBNA borders. These relationships will be actively developed and maintained so that emergency cooperation and protocols can be created. Specified supplies to fill the medical SBNA NET cache box will also be purchased so the team can stand ready to aid residents in the fragile period of time before professional city emergency responders can respond during a disaster or emergency.

Arnold Creek NET Community Engagement \$1,144

Arnold Creek Neighborhood Association (ACNA)

The goals of this project are two-fold: 1) increase awareness of and participation in the Portland Bureau of Emergency Management (PBEM) Neighborhood Emergency Team (NET) Program, specifically in the Arnold Creek Neighborhood and 2) raise general awareness regarding disaster preparedness and developing community resiliency.

Tree pruning & preservation
Tree & stump removals
Arborist reports & Consulting

MULTNOMAH Tree Experts, LTD.

Peter Torres, M.F.
ISA Certified Arborist (PN-650B)
CCB #154349
Multnomah Village

(503) 452-8160
Peter@MultnomahTree.com
www.multnomahtree.com

RAL BUSINESS SERVICES

PROVIDING PROFESSIONAL TAX PREPARATION IN YOUR NEIGHBORHOOD FOR MORE THAN SEVEN YEARS.

LET ROD TAKE THE WORRY AND HASSEL OUT OF PREPARING YOUR OWN RETURN WITHOUT BUSTING YOUR BUDGET.

PERSONAL AND BUSINESS RETURNS EXPERTLY PREPARED.

ROD LILLY - EA/LICENSED TAX CONSULTANT #33027-C
Bus Phone: (503)539-5368
Email: rod.lilly@ralbusinessservices.com
www.ralbusinessservices.com

The *SW News* is published monthly and distributed free by Southwest Neighborhoods, Inc. (SWNI). Subscribe online at swni.org/subscribe or call our office at (503) 823-4592. All submissions are due by the 15th of each month. Advertising rates can be found at swni.org/newspaper

SWNI is a 501(c)(3) nonprofit neighborhood coalition office providing services to 17 neighborhood associations and three business associations within southwest Portland. Partial funding is from the City of Portland through an annual grant. Donate at swni.org/donate

Our mission: SWNI empowers citizen action to improve and maintain the livability of Southwest neighborhoods.

We are located in the Multnomah Arts Center, 7688 SW Capitol Hwy.,

Room 5. Hours are 9:00 am to 5:00 pm, Monday through Friday. To reach us call 503-823-4592, email sylvia@swni.org.

SWNI staff: Sylvia Bogert, Executive Director; Leonard Gard, Program Manager; Jennifer Seamans, Watershed Resource Center (WRC) Manager; Sharon Keast, Communications; Nancy Biskey, Office Specialist; Sara Freedman, Events Coordinator; and Sanjane Ceesay, WRC Program Specialist.

The 2015-2016 SW Neighborhoods, Inc., board officers are Sam Pearson, President; Ken Love, 1st Vice President; Fran Laird, 2nd Vice President; Mary Schneider, Secretary; and Lee Buhler, Treasurer.

Subscribe or unsubscribe to *SW News* at www.swni.org/subscribe

Pragmatic Services LLC
General Contractor & Certified Arborist
Tel: 503.810.3900
PragmaticLLC@gmail.com

Tree Health Care Service
Certified Arborist Division

- Landscape Planning
- Pruning, Shaping
- Therapeutic Root Fertilization
- Eco Friendly Insect & Disease Control
- Soil Analysis & Enhancement
- Consulting & Reports
- Viewsacing, Cabling
- Mulching, Root Barriers
- Hazard Assessment & Removals
- Transplanting

General Construction Division
Experienced Contractor

- New Construction, Remodels
- Maintenance, Project Management
- Customized Solutions
- Tile & Stonework
- Decks, Fencing, Retaining Walls
- Additions - Conversions
- Water Problems - French Drain
- Painting / Staining
- Windows & Doors, Lighting & Security
- Disability & Access, Senior Safety

License #183855 Bonded & Insured
Satisfaction Guaranteed!
Living in the neighborhood, with 37 Years Experience

Feel free to Call or Email us now for a Complimentary Estimate

Neighborhood Reports

Arnold Creek

Next Board Meeting: Wednesday, March 2, 6:00 PM
 Next General Meeting: Tuesday, March 8, 7:00-8:30 PM
 Stephenson Elementary School, Teacher lounge, 2627 SW Stephenson St.
 Debbie Griffin and Grethe Larson, ArnoldCreek@swni.org
 ArnoldCreek.org

Annual Election Results: Fourteen people were elected to serve on the ACNA board at the annual election held in February. The new officers are Debbie Griffin and Grethe Larson, Co-Presidents; Sue Strater, Vice President; Cindy Jackson, Secretary; and Sue Randall, Treasurer. There are three at-large delegates; Patty Barker, Kathryn Daly, and Julie Rall and six district delegates representing the four quarters of the neighborhood; Hans Steuch from the north, Marshall Hilton from the east, Linda Lawson and Jessica Schimkowitz from the west and Irene Rodegerdts and Elizabeth Marantz from the south. One elected position, E Communications Coordinator, is still open. Thanks to all for agreeing to serve on the board and thanks to Jim Mullins for facilitating the February meeting. Thank you also to the volunteers who helped the election process run smoothly, Sharon Keast, Richard Marantz, Julie Rall and Cindy Jackson. The newly elected board would also like to thank the volunteers who stepped up as caretakers to keep ACNA functioning for the last six months when we were without some key officer positions. Special thanks to Irene Rodegerdts and Maripat Hensel for their work.

Future Plans: The new board is planning upcoming meetings and welcomes ideas and suggestions for topics and speakers. We will continue to follow the Stephenson swales project, the storm water problem on 34th, and the culvert replacement project at the confluence of Tryon and Arnold Creeks (the design is 30% complete, funding has been secured). The board will hold its first board meeting on March 2, for orientation and

planning. We look forward to providing a positive, welcoming environment for our neighborhood meetings and want to attract our residents to attend by offering informative and interesting meetings.

Tryon Creek NET Awarded a Small Grant: Jim Hensel wrote a successful grant proposal to purchase an emergency yurt for our NET team. Way to go, Jim! The yurt will live in the NET cache at Stephenson Elementary School. It can be erected in less than a half hour (even by people doing it for the first time) and it will provide secure shelter after an emergency like an earthquake.

Garlic Mustard: For the past seven years ACNA volunteers have been pulling garlic mustard from the roadsides in our neighborhood. The garlic mustard population has been very much reduced without the use of herbicides, but there is still some out there. If you would like to join the garlic mustard team this April, please email Liz at towhee2@easystreet.net. Last year the team found some previously overlooked and quite large patches on private property and they were able to work on them with permission from the owners. If you have a garlic mustard infestation and would like help in dealing with it, please contact Liz. See pages 7-10 in this newspaper for more information about garlic mustard.

Next General Meeting: The agenda details for the March 8th meeting will be posted on the ACNA website (ArnoldCreek.org) a week before the meeting. The main door to the school is usually locked after 6pm. Please go around to the westside entrance. This door is right by the teacher's lounge which is our meeting room.

We hope to see you in March.

Ashcreek

Next Meeting: Monday, March 14, 7:00 PM
 Multnomah Arts Center, Room 30, 7688 SW Capitol Hwy.
 Dean Smith, smithd1111@comcast.net, 503-351-0521
<http://ashcreek.swni.org>

Smith School may reopen for the Odyssey Program: The District Boundary Review Advisory Committee (DBRAC) is recommending that Smith School in Ashcreek be reopened in 2017-2018 to house the school district's Odyssey program, which is a focus program that uses historical themes to teach students K-8 a wide range of academic content.

Smith School, which formerly was a traditional K-5 neighborhood school, was closed in June 2005 and has been mostly vacant since.

School board member Julie Esparza Brown visited Ashcreek's February meeting and indicated that reopening Smith for this purpose seems now to be a strong likelihood. While most members of the Ashcreek board indicated they would prefer it reopen as a neighborhood school, the next best option would be for it to house a special program such as Odyssey.

It will take at least a year to refurbish the school facility to be able to take on the program, which currently is located at Hayhurst School and has an enrollment of about 300 students.

School Superintendent Carole Smith received DBRAC's report in February and will soon make her recommendations to the school board, which must approve any boundary changes.

Neighborhoods to discuss boundary changes: Ashcreek is meeting with the Multnomah and Crestwood neighborhood associations to discuss proposals to simplify the boundaries between the three neighborhoods and eliminate some confusing boundary overlaps.

The boundaries of the abutting neighborhoods have been the subject of

informal conversations for several years, but this time it appears that a consensus can be reached. The most often discussed changes are to make SW 45th and SW 48th Drive between Multnomah Boulevard and Taylors Ferry Road the boundary between Ashcreek and Multnomah, and to make SW Taylors Ferry Road the boundary between the Crestwood neighborhood to the north and Ashcreek.

If a consensus among the leaders of the three neighborhoods is reached, the proposition will be put before the respective memberships and there would be an opportunity for neighbors to weigh in on the idea. Ashcreek is in the midst of revisions to its bylaws, so the timing is good in that respect.

For more information, contact Ashcreek chair, Dean Smith, at smithd1111@comcast.net.

Google Groups may replace Ashcreek's listserv: The Ashcreek board agreed to try out Google Groups as a way to communicate with its membership. The online service provides for two-way interaction among subscribers and the ability to post information to an Ashcreek group site.

The current ANA listserv, which has served the neighborhood for many years, has been plagued with server problems and has been essentially out of service for a number of months. Recently, SWNI obtained a license to offer Google Groups to its neighborhood associations. Sharon Keast, SWNI's communications director, gave a demonstration of the system at the February meeting, prompting members to agree to give it a try.

Michael Kisor and Jack Klinker are leading the effort to pilot the service.

Bridlemile

Next Board Meeting: Wednesday, March 2, 6:30 PM
 Next General Meeting: Wednesday, March 9, 6:30 PM
 Board and General meet at: Bridlemile School faculty lounge, 4300 SW 47th Dr.
 Steve Mullinax, BridlemileNAParks@swni.org
<http://bridlemile.swni.org>

Bridlemile Board Elections coming at our May 11 annual meeting. The BNA board will fill six board positions at that time. There are many opportunities to make a difference on the board or as a regular member if there is something you are passionate about improving. Please send email to BridlemileNABoard@swni.org to let us know if you are interested. All residents, property owners and individuals who hold a business license within the neighborhood association boundaries are eligible for membership. All members may vote and, if elected, serve on the board. (An eligible person becomes a member of BNA two weeks after providing written consent, which may be done at any general membership meeting.)

Updates on three important projects at our February 10 meeting by representatives of Portland's Bureaus of Environmental Services and Transportation, Jennifer Devlin and Lisa Huntington. The SW 45th culvert replacement (Fanno Creek crossing) will address road flooding and fish passage. There will also be pedestrian improvements along 45th Ave. at the crossing. Stormwater and safety improvements are planned at SW Beaverton-Hillsdale Hwy and Shattuck Road, SW Hamilton roadside swale. Reconfiguration of BHH near this intersection will shorten the distance for pedestrians to cross the highway.

A full 30% plan set for BHH at Shattuck and a 60% for SW 45th culvert is available through a link on the BNA web site.

Construction is underway on the Environmental Services stormwater management project on SW Hamilton Street between SW 40th and 47th avenues. Expect delays on Hamilton. The project will help protect water quality in Fanno Creek. The project is scheduled to be completed in the spring of 2016.

The city's annual budget is in process. All agencies have been asked to submit budgets reflecting a five-percent cut. This has the potential for some damage to popular programs. For example, proposed Parks budget cuts include reductions to the Summer Free for All program and possible elimination of Movie Nights. (BNA Parks Rep Steve Mullinax represented SWNI on the Parks and Recreation Budget Advisory Committee.) You can learn more about the FY 2017-18 requested budgets at the city Budget Office website. Public forums on the proposed budget are scheduled. In SW Portland, there will be a budget forum. Mark your calendars:

Community Budget Forum
 Tuesday, April 5, 2016
 6:30 pm to 8:30 pm
 Wilson High School - Cafeteria
 1151 SW Vermont St.

Collins View



Next Meeting: Wednesday, March 2, 7:00 PM
 Riverdale High School, 9727 SW Terwilliger Blvd.
 Jim Diamond, jimd@linfield.edu
www.collinsview.org and collinsview.nextdoor.com

On January 14, 2016, the Portland City Council voted unanimously to adopt the River View Natural Area (RVNA) management plan. City Council will make a final decision about whether mountain biking will be an allowed use in RVNA after the off-road cycling master plan process is complete. Over the last four years, CVNA has had a continuing interest in RVNA, which is immediately adjacent to our neighborhood.

I am a scientist, a physical chemist at Linfield College in McMinnville. Although I am not an ecologist, I do teach my students about the impacts of global warming, so I have had to learn quite a bit of ecology and sciences related to it. I am also quite used to searching the scientific literature. I am also chair of the Collins View Neighborhood Association. I did my own literature survey on the impact of human activity on natural areas for the benefit of our interested neighbors.

The scientific literature on this subject is sparse, but I recently found a biking-specific literature survey done on behalf of the Canadian National Parks by the Miistakis Institute of the Rockies (Mountain Biking: A Review of the Ecological Effects). This is a very thorough literature study through 2010, and I thought its results would be of interest to many hikers, bikers, and others in SW Portland.

Mountain Biking: A Review of the Ecological Effects <http://www.rockies.ca/files/reports/Mountain Biking A>

Review of the Ecological Effects. pdf

Here are some of their principle conclusions (all emphasis mine):

1. "very low levels of activity are responsible for creating a great deal of environmental degradation" (Page 16)
2. "The linkage between vegetation removal and soil compaction/erosion is so strong that the two phenomena are often studied in tandem... For example, Thurston & Reader (2001) reported vegetation loss of up to 100% within two weeks of introduction of cycling (and hiking) activities on previously undisturbed sample plots. The majority of the deleterious effects is shown to occur during the first stages of trail development, and effects appear to be the same or similar regardless of the type(s) of recreational activity that are present." (Page 19)
3. "This review discovered no published research related to the effects of mountain biking on water resources." (Page 23)

The lack of water quality impact studies is disconcerting. Given the language of the RVNA conservation easement, this is exactly the sort of impact one would like to assess. There is much more to the study, so please read it if you have the time and interest. I am sure it will play a role in the development of City of Portland's Off-Road Cycling Master Plan.

Jim Diamond, CVNA



Crestwood

Next Meeting: Wednesday, March 9, 7:00 PM
 West Portland United Methodist Church library, 4729 SW Taylors Ferry Road
 Chair Tony Hansen, Vice-Chair John Prouty
 CrestwoodNABoard@gmail.com, 503-246-7366
<http://crestwood.swni.org>

Far Southwest

Next Meeting: Tuesday, March 22, 7:00 PM
Comfort Suites, SW 60th & Barbur
Marcia Leslie, mmac_les@yahoo.com, 503-246-9938
http://far_sw.swni.org

PCC Sylvania Access Vote Postponed -- AGAIN: Staff recommendations for the 2/29 vote on HTC Mode (BRT or LRT) and PCC Access Options, specifically whether a light rail tunnel will continue to be studied, were postponed. Although these "recommendations" are supposed to "advise" the Steering Committee's vote, past votes have basically rubber-stamped whatever staff recommended. I'm not aware of any past votes that altered or went against the staff "recommendations." However, the message was that the 2/29 vote (already postponed from 2/8 due to scheduling conflicts) was again put off to April or May because the Steering Committee needed more information on PCC transit options.

This gives all of you another chance to send your thoughts and comments to the "staff" (Chris Ford, Metro, and David Unsworth, TriMet, names on the Contacts List sent in CC message last month) along with the Steering Committee (all other names on the list). Please do so as soon as possible before recommendations are set. Let them know if you want 53rd used in any way as a main connection to PCC. Will the options being considered benefit the n'hood as a whole, or just PCC? What impact will each option have on the

n'hood? Please urge all involved to think of the entire corridor, not just PCC, when making their decisions, and to make sure the SWCP will serve and meet the needs of everyone along the corridor well into the future, as it was intended.

For those of you not on our email list who want more information, go to www.swcorridorplan.org, click on "Project Library" and look for 1) January 7, 2016 Summary of options to improve transit access to PCC; 2) 12/31/15 Southwest Corridor High Capacity Transit Mode Comparison; 3) 12/31/15 PCC Sylvania Enhanced Connection Options, Technical Memo; 4) Light rail or bus rapid transit? Answers to FAQ!, January 2016. Accuracy of ridership projections is questionable, even for 2035. The 1/7/16 "Summary of options..." listed "branded" bus routes providing all day frequent service, and a "local bus hub on PCC Sylvania campus" with links to off campus light rail as options to tunnels and trams.

At our March meeting Jim Gorter will speak on residential infill, we will have the reading of our proposed new bylaws to be voted on in June, will seek more volunteers for the FSW board election in June, and will give the latest information on the SWCP.

Hayhurst

Next Board Meeting: Monday, March 14, 7:00 - 8:30 PM
Hayhurst School, 5037 SW Iowa St.
Janet Hawkins, janetchawkins@msn.com, 503-244-7703
<http://hayhurst.swni.org>

Our March meeting agenda will include the following items:

- Vermont Street Safety Concerns
- Sign Cap Proposal for Hayhurst Neighborhood
- Updates on Proposed Housing Developments on SW 48th Avenue

- & SW 42nd Avenue
- Neighborhood Emergency Team (NET) Update
- SWNI Board Report
- Transportation Committee Report
- SWNI School Committee Report/Changes for Hayhurst School

Hillsdale

Next General Meeting: Wednesday, March 2, 7:00 PM
Both meetings open to the public at St. Barnabas Church, 2201 SW Vermont St.
Duane Hunting, duane.hunting@zgf.com, 503-245-7998
www.hna-pdx.com

Future board and general meetings will be conflated and will begin at 7 pm. Because of other commitments, Carolyn Raz is resigning from the Board.

Brett Matthews of the Neighborhood Emergency Team (NET) is requesting feedback on topics for the June 25 SWNI Emergency Preparedness Fair. Suggestions included: insurance representatives explain earthquake and wind-damage clauses; costs relating to seismic retrofits; Northwest Natural Gas representatives attend; neighborhood maps be available; pet and children's needs during emergencies be addressed; and that Map Your Neighborhood and Nextdoor Hillsdale information be available. Matt Emlen is the NET Community Outreach coordinator.

Matt Bihn of Metro and Dave Aulwes of TriMet presented a Southwest Corridor plan update and timetable of planning, decision-making, environmental impact study activities, and construction schedule and 2035 completion. The bus rapid transit or light rail transit from downtown Portland to Bridgeport options were explained. BRT rush-hour capacity will be reached by 2035; LRT capacity extends beyond that year, representing more room to grow. Options relating to the extension of a new line to Portland Community College-Sylvania were discussed and Erika Nebel of City Commissioner Steve Novick's office stated that he supports the best option for working class students and families to access PCC's campus. More information is available at: <http://www.oregonmetro.gov/sites/default/files/SWCP-ModeComparisonMemo-20151231a.pdf>.

The SWNI Schools Committee has plans to implement TechConnect and make Internet research and study opportunities available to all students, regardless of family income. Beth Woodward, a resident in southwest Portland, is advocating to the Schools Committee that Portland Public Schools change the name of Woodrow Wilson High School. The committee will study the matter and make a recommendation. Barbara Bowers shared information at the school's committee meeting about Hannah Davis and other students from Wilson High giving a presentation at the March 2 meeting on Hillsdale Town Center growth from a student perspective.

The Transportation Committee is following issues including a Nike bike share program. There was a Hillsdale Alliance meeting in January, organized by Sheila Greenlaw-Fink, focusing upon homelessness in metropolitan Portland and the Southwest. Guest speakers included Israel Bayer (Street Roots), Marc Jolin (Home for Everyone), Rick Nitti (Neighborhood House), Rachel Duke (Community Partners for Affordable Housing), and Ruth Adkins.

Bill Garyfallou, the owner of the Golden Touch Restaurant site at 8124 SW Barbur Boulevard, attended the Hillsdale meeting in February and answered members' questions about his construction plans.

SW Trails-PDX will be having a work party in Himes Park, March 3, 9am. Don Baack announced funding for a local trail bridge and provided updates on Southwest in Motion at the February meeting.



Homestead

No meeting in March
Next Meeting: (1st Tuesdays), April 5, 7:00 PM
OHSU Child Development and Rehabilitation Center, 707 SW Gaines
(SW 6th Ave Dr. & Gaines St.), 3rd floor
Ed Fischer, homestead@swni.org
www.HomesteadNA.org

Duniway Park: Stephanus Gunawan, Parks Bureau Community and Public Involvement Assistant, and Commissioner Amanda Fritz attended our February meeting to announce that the city has decided to proceed with artificial turf installation, but will not go forward with the originally proposed field lighting and additional paved parking. These latter additions proved too costly, were opposed by neighbors, and were significantly complicated by the city's own regulatory processes. They may, however, be proposed for addition at a later date.

OHSU: Michael Harrison and OHSU Program Managers Brian Newman from Campus Planning and Scott Perala from Design and Construction shared preliminary OHSU construction plans with the neighborhood. These include:

- **Casey Eye Institute** expansion of pediatric and gene therapy programs requiring additional space to be constructed to the west of the current facility. CEI is on the leading edge of gene therapy for vision preservation.
- **Dornbecher Childrens Hospital** expansion to relocate all OHSU maternity, delivery and newborn child services to one area at Dornbecher. This plan is currently conceptual with construction information yet to be developed.
- Very early planning to replace the aging **Sam Jackson parking structure** involving no net increase of parking spaces.
- Deconstruction of the now vacant old **School of Dentistry** building while maintaining safety of all nearby buildings, slope stability, air quality and noise control.
- Replacing the **Vollum Institute's** failing terra-cotta façade and upgrading the building's energy infrastructure.

Veterans Affairs Medical Center: Margaux Macchiaverna indicated that VAMC construction of new hospital and parking buildings, and seismic improvements project funding were not approved by congress and these projects are delayed. The VAMC did, however, receive funding for schematic design for the projects which may begin the end of 2016.

Schools: Eric Schnell is keeping us updated on controversial school boundary changes proposed for the west side. Many feel that a new school should be built in NW Portland.

Land Use: Pascale Schwab, a NA member, brought up concerns regarding possible development of four lots at end of 13th and Gaines. Property owners there have signed an intent to sell these properties for development. The site in question appears to abut Markham Trail and the neighbors want to ensure that the neighborhood has its interests heard. We are also aware of, and following, at least two other proposed apartment developments, one proposed marijuana retail outlet, and one liquor service license on Marquam Hill.

Homestead Outreach: Thank you to Jackie Phillips who has updated our website. There are two ways to access the site: (1) <http://www.swni.org> select neighborhoods, then Homestead; or (2) www.homesteadna.org The updated site includes our revised bylaws.

Bylaws: We are required to have a formal membership list of voting members. If you want to become a member, you must let us know by writing us c/o SWNI, 7688 SW Capitol Hwy, Portland 97219, or by e-mailing us at homestead@swni.org. You are eligible if you live in the neighborhood (see boundary map <http://swni.org/CMS-Uploads/Homesteadx.pdf>), own property in the neighborhood, have a business license for a neighborhood business or are appointed by an organization in the neighborhood. Let us know which category fits you in your e-mail. Under the bylaws, there is a 21-day period between your notice to us and your being added to the membership list.

The bylaws now reflect SWNI insurance requirements requiring board-centric association operations and other minor changes that were approved by the membership.

If you want to obtain Homestead's detailed meeting announcements and other local updates, please sign up for our e-mail listserv (~ 2-3 emails/month) at SWNI.org click on "Neighborhoods" and then "subscribe" to the contact list (and then pick Homestead).

Milt Jones
Homestead NA Co-Chair

Marshall Park

Next Meeting: Thursday, March 10, 6:00 PM
Capitol Hill School, 8401 SW 17th Ave, Room 108
Mike Charles, marshallparkna@yahoo.com, 503-244-6099
<http://marshallpark.swni.org>



According to Officer Caspar, not many recent crimes were reported, and all were vehicle-related. A motor bike was stolen, and a couple of car break-ins. Remember to lock up your vehicle and park in safe, visible and well lit locations if possible. If you do experience a crime, please report it to the police, even after the fact. You might recover stolen goods and bring a criminal to justice. Also, it really helps Portland police track crimes in the area that might save your neighbors from becoming future victims.

We were hoping to modify our bylaws to reduce the number of neighbors needed for a quorum to pass motions. But first, we need to have a quorum in attendance in order to change the bylaws. Talk about a Catch 22! And no, our quorum is not 22.

Some sad news. On Thursday, January 21, 2016 Jan Weston died of a sudden heart attack. Jan was a major figure in the Marshall Park Neighborhood Association. He was chair for many years, providing strong leadership. He continued to be involved in a variety of

capacities. He served as our representative on many SWNI committees, sometimes two at the same time. He never met a committee he didn't like!

Jan was the neighborhood's representative to SWNI Transportation Committee. He served for many years on the SWNI Public Safety Committee and, even after they appointed a new representative, he still liked to pop in and attend meetings. Jan organized a number of bicycle safety rodeos, served as master of ceremonies at one of SWNI's Police Recognition events, and volunteered at numerous other community events. He also served on the SWNI board for many years.

Jan also advocated for changes at the State Legislature and participated in peace rallies. He enjoyed driving and found employment moving cars around the state for dealers, and more recently as an Uber driver. He loved to tell funny stories, listen to his wife Betsy play the violin, and walk with his dog. He will be missed.

Neighborhood Reports



Maplewood

Next General Meeting (1st Tuesdays): Tuesday, March 1, 6:45 PM
Next Board Meeting has been rescheduled to avoid conflict with candidates forum:
Tuesday, March 22, 7:00 PM
 All meetings at Maplewood Coffee and Tea, 5206 SW Custer St.
maplewood@swni.org
<http://maplewood.swni.org>

Join us at the annual meeting and elections! The new Maplewood website is up and running at: www.maplewoodpdx.org. The March general meeting will include elections to the board. See the website for position descriptions. We would love for new neighbors to join.

The agenda of the February general meeting changed at the last minute from including a mentor from Transition Projects to discuss homelessness, to focusing on The Gabriel, a proposed apartment complex at SW 45th and SW Vermont. Visit the Transition Projects web-site at www.tprojects.org. We hope to reschedule for a future meeting.

Representatives from Winkler Development attended the February meeting to present their apartment proposal, answer questions and hear concerns. The development will be across the street from the SW Community Center at Gabriel Park. This is the first high-density development proposed in Maplewood for years and many neighbors attended the meeting. See the [Maplewoodpdx](http://www.maplewoodpdx.org) website for details on the meeting.

Land Use: The St. Luke's LU application requesting a variety of actions associated with the master plan was heard by the hearings officer in January and February.

Parks: See the April Hill Park update on page 11.

Safety: James Nobles continues to

facilitate the joint Maplewood-Hayhurst Transportation Group to strategize and plan how to address safety on SW Vermont. Proposals being discussed are improved shoulders along SW Vermont, drainage improvements, vegetation management in areas where sight distance is compromised, providing wider shoulders for pedestrian and bicycle safety, and improvements for bus-stop safety, both public transit and school bus pick-up sites.

Transportation: Stephan Lewis is working closely with SW Trails to advance the possibility of a trail connection between Maplewood and Gabriel Park. Please attend the March meeting to hear about this exciting proposal. Two important planning initiatives are happening in SW which may help advance Maplewood's transportation and safety concerns: The Comp Plan TSP (Transportation System Plan), and SW in Motion, a PBOT-led planning project to help prioritize SW transportation needs.

If you have any questions, projects to propose, or wish to volunteer, please contact us at Maplewood@swni.org or visit our new website at www.maplewoodpdx.org. Visit the Maplewood NA Facebook page for updates on what the neighbors are doing at: [Facebook.com/MaplewoodNeighborhoodPortlandOr](https://www.facebook.com/MaplewoodNeighborhoodPortlandOr)



Multnomah

Next General Meeting: Tuesday, March 8, 7:00 PM, Room 30
Board and General meet at Multnomah Arts Center, 7688 SW Capitol Hwy.
 Carol McCarthy, mnachair@gmail.com
<http://multnomah.swni.org>

Portland is amending its "Title 11" tree code. Initially, the city proposed protecting trees with diameters larger than four feet, while the Audubon Society recommended protection for trees larger than 2.5 feet. The MNA and SWNI endorsed the Audubon's position. After hearings, the City changed its proposal to protect trees larger than 3 feet.

Under existing rules, trees on development lots under 5,000 ft² are exempt from protection and can be clear cut. The MNA and SWNI requested this exemption be removed so that development lots would be treated the same as non-development lots. The city is now recommending that trees on development lots under 3,000 ft² be exempt from protection.

Public involvement has made a difference, but there is more to do.

The infill project was ostensibly created to address residents' concern about the bloated infill that is changing neighborhood character - driving up prices, taking away privacy, and blocking sunlight. But instead, their recent handout, Principles for Residential Infill Development (Draft), includes bullets:

- Rename single-family districts where greater diversity of housing types will be allowed.

- Limit single-family districts to single family housing types, with clear and simple exceptions.
- Retain flexibility in allowed lot coverage and floor area.
- Retain flexibility in allowed building envelope.

Under the "Be economically feasible" principle is the bullet:

- Would the approach allow for a reasonable return on investment for homeowners and developers, allowing the market to produce needed new housing to sufficiently accommodate the city's growing population?

Rather than addressing neighborhood concerns, the document reads like a wish list for developers and their investors. It's the infill project, not the investment project.

Over 430 new apartment units are planned within and along Multnomah's boundaries: SW 33rd & Capitol (70); SW Bertha & Capitol Hill Rd. (84); SW 45th & Vermont (60); 8124 SW Barbur (223). Two of these are in environmentally sensitive areas. The city will not require the MNA's adopted minimum acceptable parking ratio of one stall per unit. Why should we allow developers to use our streets as their parking lots?

The four-story, mixed-use residential building planned north of SW Capitol across from the Multnomah Arts Center has raised particular concerns within the MNA, across Portland, and beyond. Over 1,800 people signed an online petition opposing 4-story development in the Village (see <http://tinyurl.com/MultnomahVillagePetition>). Please attend our next meeting and join your neighbors who are working to keep Multnomah Multnomah.



Portland should do better. Photo by Houston Markley.

Markham

Next Meeting: Tuesday, March 8, 7:00 PM
 Jackson Middle School library, 10625 SW 35th
 Donna Herron, (503) 452-0000
Markham.President@gmail.com
<http://markham.swni.org>

A recent judge's ruling may shut down access to Markham Neighborhood's only park, Marigold HyrdPark near 17th and Marigold, as a result of a complaint filed accusing the Water Bureau of misusing funds to pay for the upkeep of HydroPark grounds. MKNA is currently gathering information about this and will update the community on its website and at the March meeting.

Markham Neighborhood Association Inc. (MKNA) welcomes two neighbors to its board: Phil Ford, Public Safety chair and Michael Murphy, Parks and Community Centers chair.

Phil Ford is a newly certified Neighborhood Emergency Team member. Neighbors have most likely seen him smiling and waving next to a "Slow Down" sign at 26th & Taylors Ferry in the morning.



Professor Michael Murphy has been a resident of neighborhood since 2000, is a professional ecologist/ornithologist who studies the population biology and behavioral ecology of birds. He is full professor of Biology at Portland State University (PSU), and since arriving at PSU in 2000 has conducted research on the lives of birds at Malheur National Wildlife Refuge and in Portland's parks, especially those in the Markham and West Portland neighborhoods. In addition to his own research, he advises students working on Masters and Ph.D. degrees, many of whom also work in Portland's parks on a variety of topics that include birds, plants, amphibians and mammals.

Many if not most of you have probably visited neighborhood parks and enjoyed

the wildlife, and some of you may have wondered how well those populations are doing. This is exactly the kind of question that Murphy attempts to address in his research: do Portland's parks and green spaces provide habitat of sufficient quality to allow native species to reproduce and survive at levels high enough to maintain populations without input from surrounding rural habitats? To address this question Murphy and students chose to conduct research on spotted towhees, a local songbird, in Springbrook Park in Lake Oswego, and Maricara, West Portland and Lesser parks from 2004 through 2007. Their recent publication in the journal Urban Ecosystems summarized the four years of work and demonstrated that survival and reproductive rates of towhees are sufficient to not only cover losses, but also produce enough towhees to supply surrounding areas, possibly your backyard, with birds!

While conducting the towhee research, Murphy and students began to realize that important interactions go on between the birds in parks and their human neighbors in the areas surrounding the parks. The PSU bird team with its new members (graduate students Christine Betlinski and Molly Shallman) are therefore hoping to return to the same parks used previously to begin to ask new questions about towhees, the parks, and the human neighbors to gain a better understanding of how the lives of urban birds are affected by people and how people are affected by them. Christine and Molly are just beginning to work on their graduate degrees and we anticipate initiating studies that will continue over at least the next several years. Their upcoming presentation at the Markham Neighborhood Association meeting will delve deeper into the nature of their work and how interested neighbors can become participants.

MKNA set up a charitable nonprofit account with Bottle Drop Centers of Oregon. Neighbors can drop off bags of returnable bottles and cans without having to hand-feed them into machines and, if desired, have the proceeds donated to MKNA's community projects fund. For more information about how to help MKNA raise funds with Bottle Drop Centers and Fred Meyer Community Rewards programs, visit www.MarkhamNeighborhood.Com.

Everyone is welcome to attend MKNA's next meeting on March 8th



South Burlingame

Next Meeting: Thursday, March 10, 7:00 PM
 Capitol Hill School, 8401 SW 17th Ave, Room 111
 Sam Pearson, sfpjr1@gmail.com
<http://burlingame.swni.org>

Every month on the second Thursday of the month, a group of neighbors get together at Capitol Hill School to discuss items of importance to the neighborhood we live in. Sometime it may be the houseless camps that can be found below the Terwilliger Bridge, or maybe the crime statistics that have occurred in the neighborhood as of late. Often we discuss transportation issues concerning what we know as Barbur Blvd, but are recognized by other parts of the Metro area as the Southwest Corridor Plan.

Infill has become a big part of the whole city talk and with it discussions about sidewalks, infrastructure, size and character. This last meeting we were told that as of now the Macadam Ridge Development is still on the drawing board as far as an application going in for review.

Bullying came up once again, and a discussion took place that opened a few eyes concerning the effects this has on a neighborhood that has seen some density growth. We were reminded that growth is occurring and we can either be a part of it, or we can be the bully in the neighborhood who can only accept one outcome.

We all have our views on subjects near and dear to our neighborhood, so please come out and become a part of the neighborhood association. Positions on the board are coming up for election as are a rework on our bylaws. At our meeting in May you could become a board member or possibly the chairperson, volunteering for the good of the neighborhood.

Neighborhood Reports



South Portland

Next Meeting: Wednesday, March 2, 7:00 PM
NCNM Annex, 2719 SW Kelly St.
Ken Love, TLC11@mindspring.com, 503-245-7795
www.southportlandna.org



Ken Love, Chair



Ahoy, South Portland, Thank you to Commissioner Amanda Fritz for coming to our meeting last week and staying for the entire meeting! We had a lot to talk about and it was very helpful to have her experience to help guide us. Also, thank you to everyone who came. It is good to have large attendance. The more input we get, the better the decisions.

South Portal

Thank you to Andrew Aebi from the Portland Department of Transportation who came to talk about the latest design ideas for the south entrance to South Waterfront (South Portal). A design was completed in 2008 but it proved to be too expensive and funding was never found. The challenge is to come up with a design that is fundable and yet also functional. The current ideas are to extend Moody to Hamilton which would make Hamilton another entrance/exit to South Waterfront. Moody would be two way between Bancroft and Hamilton and they would put in a wide bikepath/walkway. As with recent overpass construction at Hood, you could not go across Macadam from Hood into South Waterfront but you could turn left on Macadam. You could then enter South Waterfront on streets such as Lowell, which would be realigned to directly connect east of Moody. The Macadam/Bancroft/Hood intersection would have other minor changes. Several people at the meeting expressed concern that the projects either be done concurrently or that the Moody extension to Hamilton be done first to see how traffic actually flows. This is an important project and we plan to spend most of the March meeting discussing it and South Portland's position. Please attend our meeting and share your ideas. We need to get everyone thinking about this one.

Duniway Park

Thank you to Commissioner Fritz, Elizabeth Kennedy-Wong and Jamie English from Portland Parks for filling us in on the Duniway Park project. The project will be funded by Under Armour who will be moving into the old YMCA building. They will increase the track size to make it regulation size and build a soccer field inside the track using artificial turf. They have decided not to build an additional parking lot and install large lights which is the position SPNA took. (Thank you for listening to us!)

Willamette Park

Thank you to Ross Swanson and Alan Schmidt from Portland Parks for giving us the latest on Willamette Park. They will start habitat reconstruction in the area of the large oak trees soon. The dog off-leash area will be moved

to the field just ahead of the Nebraska entrance. They may put in temporary fencing before the final off-leash area is built. Construction on the final off-leash area will start in about a year. The planned dog off-leash park was reduced by 1300 square feet and will be about a half-acre. The reduction was necessary due to drainage and an access road. Several people expressed concern about the smaller size. They will soon start construction to improve the pathway along the river and the bikeway at the west end of the park. They plan to spend about \$1.5 million for improvements in the park for this project.

Beading Grant

SPNA received a grant from the Southwest Neighborhoods small grant program to host a beading class. (Thank you, SWNI!) The project was developed by Laura Campos on behalf of SPNA's Equity Committee and is intended to increase cultural awareness and be fun. We will let you know as soon as we have a date.

Elections

VERY IMPORTANT: April is the South Portland Neighborhood Association elections. We will have some vacancies. Please come if you have some time to make your neighborhood a better place and have some fun. It is Wednesday, April 6, at The National College of Natural Medicine, Radelet Hall, 2719 SW Kelly St. Please contact me if you have any questions. (503) 720-5683

Summer Concerts

We are starting to work on the summer, fun events for you. If your business wants to be a sponsor, please contact me. It is a great way to get exposure to the neighborhood as we have been having several thousand come each summer. Of course, we always need more volunteers.

IMPORTANT: Please sign up for our email. To sign up go to www.southportlandna.org.

Also, to keep up with SPNA events and neighborhood news, follow us on Facebook: [facebook.com/SouthPortlandNeighbors](https://www.facebook.com/SouthPortlandNeighbors)



Getting ready for summer

Ken Love
President
South Portland Neighborhood Association

South Portland Neighborhood Association Committee Meetings - Everyone welcome!

Transportation/Parking Permit Committee:
Tuesday, March 1, 6:00 pm (usually meets the day before the board meeting)
Ross Island Grocery, 3502 SW Corbett, Contact: Bill Danneman (503) 228-9868

Land Use Committee:
Tuesday, March 15, 6:00 pm (meets the third Tuesday of the month)
Land use meetings are no longer at the Ross Island Grocery. For location each month, Contact: Jim Gardner (503) 227-2096, landuse@southportlandna.org

Communications/Equity/Parks Committees:
Thursday, March 10, 6:00 pm
Ross Island Grocery, 3502 SW Corbett, Contact: Lee Buhler (503) 227-0160

Southwest Hills Residential League

Next Board Meeting: Wednesday, March 16, 6:30-7:00 PM
followed by the General Membership Meeting, 7:00-8:00 PM
Ascension Episcopal Church, 1823 SW Spring St., downstairs meeting room
Nancy Seton, nancyseton@comcast.net, 503-224-3840
<http://swhrl.swni.org>



Vista Springs restoration site a year ago and today.

On March 16th there will be a special general membership meeting for neighborhood emergency preparedness organizing, plus a brief update on Strohecker's and school boundary issue, from 7-8pm.

Strohecker's: Join the conversation with your neighbors on the future of Strohecker's - what comes next, and what we might do. While decisions are in the hands of the Santa Ana, California property owner, SOUTHWEST HILLS LLC, we can still discuss and decide what our neighborhood priorities are, and communicate them to the owner and the city. There has been some interest in community-funded investment in a potential new tenant with grocery anchor. Nancy Seton has written a letter to the property owner, asking what his intentions might be, and emphasizing neighborhood support for a quality grocery. Contact SWHRL swhrl@swni.org, Nancy Seton at 503-224-3840, and/or comment on Nextdoor Southwest Hills: <https://southwesthillsor.nextdoor.com>

SWHRL Vista Spring Restoration Project: We are so grateful to volunteers who have been helping with our project to remove invasives and re-plant with natives at the corner of SW Vista and Spring streets. We've had some surprise angel-donors! Nancy Towne-Smith is funding our stone bench, to be dedicated to her mother Phyllis Towne, who lived just 2 blocks from the restoration site. Phyllis led many hikes for the Mazamas, the Multnomah Athletic Club and SWTrails, of which she was a founding member. Michael Carlson of Habitat Restoration NW donated several hours of site work with his crew - a huge help! Ira Schmitz, a passerby at our weeding site, offered free native plants from his restoration business, The Resource Company, Inc. Trish Green not only weeded, but her husband Rich and son Aiden hauled away our piles of weeds! We plan to finish planting in March. Donations still welcome for path materials. Email swhrl@swni.org or call Nancy Seton at 503-224-3840 for more info.

West Portland Park



Next Meeting: Thursday, March 10, 7:00 PM
Jackson Middle School, (Library) 10625 SW 35th Street
Mike McNamara, mike@mcnamaraconsulting.net
<http://wpp.swni.org>

It's a busy but great time to be in West Portland Park! We're seeing evermore residents join the neighborhood association—but we're always looking for more. Be sure to join us March 10th for our next meeting.

At our February meeting we received a brief update on the SW Corridor. Short story: the plan and any decisionmaking is being moved out into the future so committees have more time to do due diligence and gather research. It also means residents and neighborhoods have more time to add their voices. West Portland Park, being near PCC Sylvania and crossed by Capitol Highway, is at a critical juncture for the proposed plan and options. So we encourage all residents and neighbors to explore the preliminary plans and provide feedback.

Community is hallmark of WPP. As such, we discussed NET (Neighborhood Emergency Team) training for the community. Our own Kieran Downes is NET trained and reminded us that in the wake of an emergency, it's imperative we're individually prepared and the resiliency of our neighborhood is high and tested. The more we can come together now—and early—to learn skills and preparedness, we can quickly recover in case of emergency. It's also a great reminder to get to know others in the neighborhood, to grow our resilience zone. Kieran is teaming with President Mike McNamara to form a committee to keep the ball rolling on this, including working better with other neighborhoods to share resources and band together.

Speaking of which, business is booming in West Portland Park! Well, not exactly, as we're more known for trees than businesses, but we do have a new Black Rock Coffee Bar coming to the corner of Capitol and Barbur, where a Kaady car wash once sat. According to

the Bureau of Development Services, the area is going to receive two new landscape islands, and a plaza or seating area. We proudly support our local businesses and President Mike McNamara and Vice President Ryan Blum have worked diligently to help get a Business Alliance for our nearby businesses off the ground. Be sure to check out many of the fine establishments nearby, and if you shop at Fred Meyer, be sure to link your Rewards card to our neighborhood! This feature allows you to earn Fred Meyer points and Freddie's then matches to our neighborhood association. It's under the Community Rewards link and our non-profit organization number is 86626.

The aforementioned trees were also in discussion, as they are what make and mark our neighborhood. Our tree canopy provides more than beauty and definition, it's also good for the environment and provides natural insulation and cooling. We've noticed a disturbing trend in SW Portland where the city tree code isn't doing enough to preserve the trees. The code mentions many reasons why trees should be preserved, with one being that they're a community asset—and that's precisely what trees are. But without a stronger voice—which trees do not have—they will disappear. Stay tuned for more on this important issue that affects all of SW Portland.

That's all for now, but we hope to see you at March's meeting. Be sure to join our mailing list.



PROGRAM UPDATE



THE MANY STAGES OF GARLIC MUSTARD. It quickly becomes the dominant understory species in our forests, and its roots secrete a chemical that may inhibit native plant growth. That reduces plant diversity.

GARLIC MUSTARD Fighting the Infestation

*By Mitch Bixby
City of Portland Environmental Services*

YOU HAVE TO HAND IT TO GARLIC MUSTARD: IT IS PERSISTENT. Eight years ago, the idea of garlic mustard seeds surviving a decade in the soil was hard to accept. Now, it seems pretty likely. We have also seen unexpected behaviors, such as flowering plants in September or plants that flower twice in a single year. These examples, while rare, point out the variability of garlic mustard. Persistence and variability are a tough combination to beat.

As our understanding of garlic mustard has changed, so have our management activities. What began as a collection of hand pulling events in 2004, developed in 2006 and 2007 into Oregon State Weed Board grants for Portland Parks. Those efforts have grown into multi-partner actions over the last eight years.

As widely distributed and persistent as garlic mustard sometimes appears, there can be no doubt that efforts to control it are making a difference. The numbers of plants are down substantially all over town, and particularly on the west side. In recent years, there were sizeable infestations along roads like Germantown, Skyline, and Burnside. Now plants are scattered, patches are small, and our crews don't have much to treat as they walk miles of roadside. These "walking tours of Portland" will continue into the foreseeable future, to prevent re-infestation and to tamp down flare-ups.

The City of Portland is intensifying its garlic mustard control efforts along creeks with known infestations, while all partner organizations continue to increase surveys in peripheral areas. The West Multnomah Soil & Water Conservation District and Portland Parks have made important gains tracking down and treating garlic mustard deep in previously unmanaged areas.

In addition, a few neighborhoods have committed to hand pulling certain stretches of road. These efforts have been quite successful, setting a model for other neighborhoods to adopt. Please contact Mitch Bixby at the City of Portland to discuss roadside pulling projects and avoid conflicts with spray treatments.

WHAT'S NEXT? For several years, Environmental Services has offered quite a bit of garlic mustard information on its website. We encourage you to visit www.portlandoregon.gov/bes/garlicmustard and have a look. You will find several resources including some of the lookalike species, garlic mustard's current growth phase, an up-to-date list of recent roadside treatments, and our thoughts about this season's control methods and timing. Our treatment season usually starts in April and wraps up in June.

The partnership of Portland Parks & Recreation, Environmental Services, the West Multnomah Soil & Water Conservation District, Clean Water Services, and the Johnson Creek Watershed Council has benefited from consistent staffing commitments, and the substantial support of the Oregon State Weed Board and Oregon Watershed Enhancement Board.



ENVIRONMENTAL SERVICES
CITY OF PORTLAND
working for clean rivers

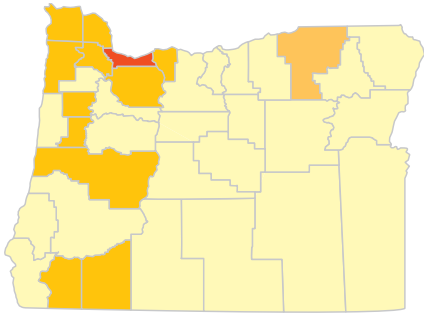


Nick Fish, Commissioner • Michael Jordan, Director

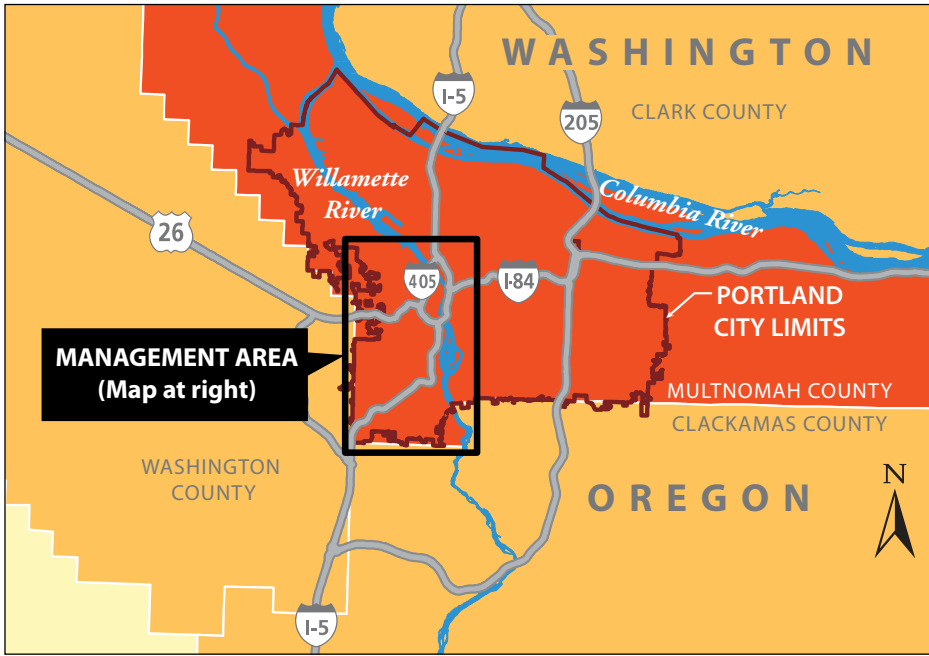
Efforts to Control and Contain Garlic Mustard

GARLIC MUSTARD SPREADS EXCLUSIVELY BY SEED

On its own, garlic mustard seeds are spread primarily by water flowing in stream corridors and off roads. For our part, people and their pets spread seeds in boots, tires and paws. Clean your shoes, tires and dogs after traveling in areas of known garlic mustard infestations so you don't spread seed to yards and parks. Stay on trails and keep dogs on leash to prevent accidental contamination.



Garlic mustard distribution in Oregon



SOURCE: OREGON DEPARTMENT OF AGRICULTURE GARLIC MUSTARD BROCHURE
Garlic mustard distribution in Portland Metro area

Do you want to know more about garlic mustard in Portland?

Ongoing updates about current phase and recent treatment are available online at www.portlandoregon.gov/bes/garlicmustard

More information about other target invasive plant species available at www.portlandoregon.gov/bes/edrr

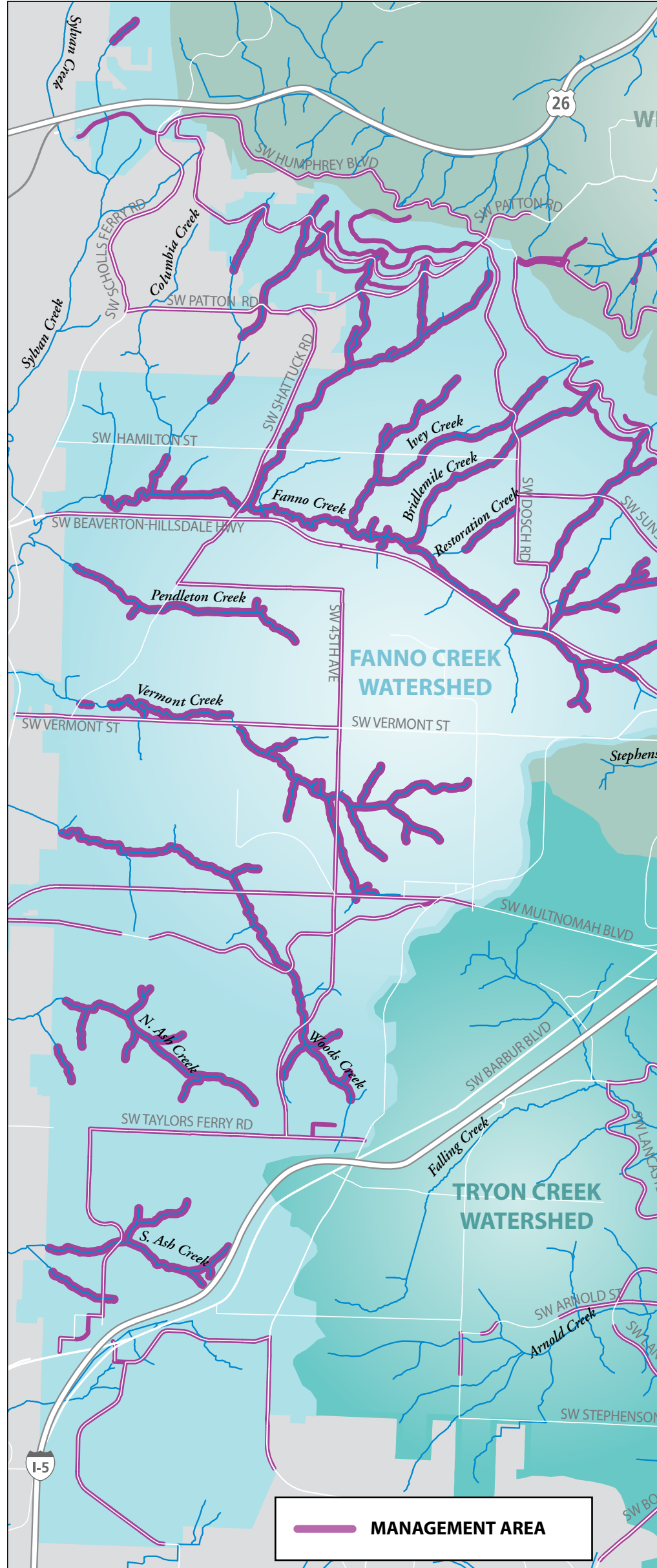


ENVIRONMENTAL SERVICES
CITY OF PORTLAND
working for clean rivers



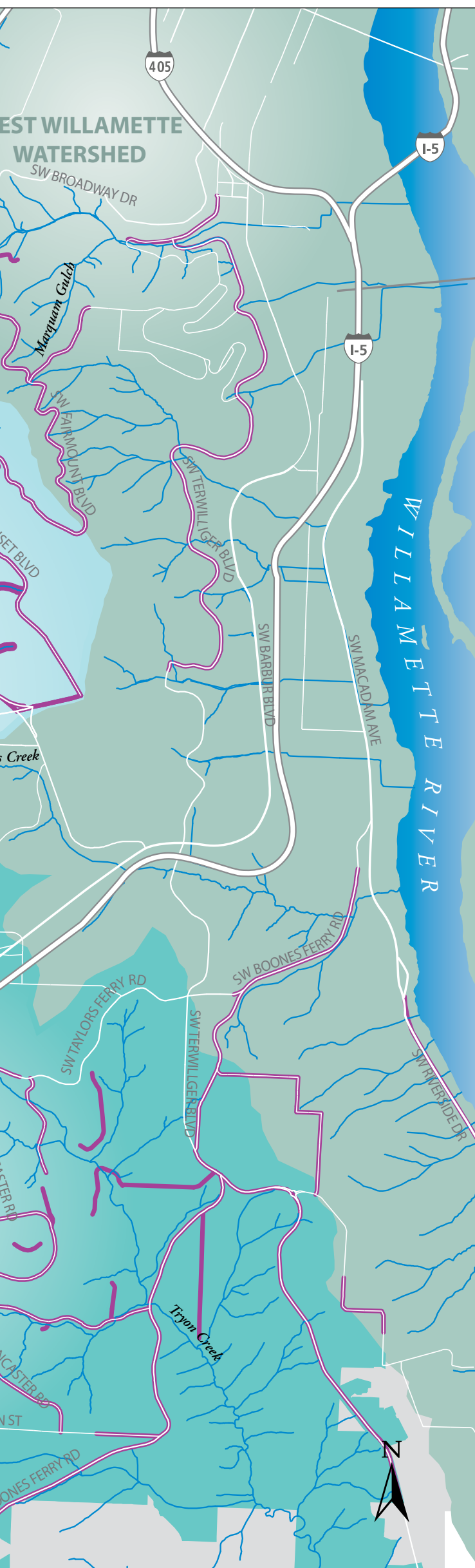
Stormwater runoff can impact water quality in rivers and streams. Natural resources, like urban streams, forests, and wetlands manage stormwater naturally to protect water quality, public health, and the environment. Green infrastructure reduces flooding and erosion, provides cool, clean water to our rivers and streams, and adds wildlife habitat and urban green space for healthier watersheds.

Garlic Mustard Management Areas



If you see garlic mustard that looks untreated, report it to Mitch Bixby at 503-823-2989 or mitch.bixby@portlandoregon.gov

Garlic Mustard



MAP COURTESY OF OREGON DEPARTMENT OF AGRICULTURE GARLIC MUSTARD BROCHURE

SOUTHWEST PORTLAND VOLUNTEER COORDINATORS:

Southwest Watershed Resource Center – Jen Seamans, 503-823-2862, watershed@swni.org
 Portland Parks West Side Stewardship Coordinator – Mary Verrilli, 503-823-3681
 Willamette River Stewardship Coordinator – Mary Verrilli, 503-823-3681

West Willamette Watershed

Current Program and Partners

The City of Portland, West Multnomah Soil & Water Conservation District and local and volunteer organizations work together to control invasive weeds through the West Willamette Restoration Partnership (WWRP). WWRP's focus is the southwest hills from OHSU to River View Natural Area. WWRP members are working to control garlic mustard on trails, in road rights-of-way and in stream corridors as noted on the map.

From April through June, expect to see licensed contractors controlling garlic mustard using treatment methods consistent with the City of Portland Integrated Pest Management Strategy. They will hand-pull garlic mustard and apply herbicide.

Get Involved

You can get involved in restoration efforts in your watershed. Contact one of the organizations below to learn more.

Friends of Marquam Nature Park

Robin Jensen, 503-799-8435

Friends of River View Natural Area

Fran Laird,
 friendsofriverviewnaturalarea@gmail.com

Friends of Terwilliger

Robin Vesey, 503-293-1069

West Willamette Restoration Partnership

Jalene Littlejohn,
 wwrpcoordinator@gmail.com

South Portland Riverbank Partners

Mary Verrilli, 503-823-3681

Fanno Creek Watershed

Current Program and Partners

As in previous years, Environmental Services will survey for and treat garlic mustard on roadsides and along the banks of Upper Fanno Creek and its tributaries. Environmental Services staff contacts property owners along target creeks for permission to look for garlic mustard on their property and treat it, if necessary. The city will also mail reminders of upcoming treatment to property owners with current agreements.

If you own streamside property in the mapped area and you have not yet signed up to have your property inspected or treated, please call Mitch Bixby at Environmental Services, 503-823-2989.

Get Involved

You can get involved in restoration efforts in your watershed. Contact one of the organizations below to learn more.

Bridlemile Creek Stewards

Steve Mullinax, 503-768-9065

Friends of April Hill Park

Jill Gaddis, aprilhillpark@gmail.com

Friends of Dickinson Park

Tony Hansen, 503-317-3914

Friends of Gabriel Park

friendsofgabrielpark@gmail.com

Friends of Woods Park

Jesse Johnston, jesse@teamjohnston.net

Multnomah Village Gateway Project

Randy Bonella, 503-803-5963

PCC Habitat Team at Sylvania

Natural Area Park

April Ann Fong, afong@pcc.edu

Tryon Creek Watershed

Current Program and Partners

Garlic mustard efforts in the Tryon Creek watershed again focus on roadside infestations in the neighborhoods around Tryon Creek State Natural Area, Maricara Park and Marshall Park. Volunteers with the Friends of Tryon Creek State Park and Portland Parks & Recreation staff will remove garlic mustard in Marshall Park and Foley Balmer Natural Area.

Get Involved

You can get involved in restoration efforts in your watershed. Contact one of the organizations below to learn more.

Friends of Tryon Creek State Park

Lizzy Miskell, lizzy@tryonfriends.org or 503-636-4398

Tryon Creek Watershed Council

Adra Lobdell, volunteer@tryoncreek.org or 503-636-4398

Friends of Marshall and Maricara Parks

John DeLance, friendsom2p@gmail.com

Report sightings after May 31st, please report to mitchbixby@portlandoregon.gov.

HOW TO IDENTIFY

Alliaria petiolata Garlic Mustard

GARLIC MUSTARD is a cool season herb, native to Eurasia, that European settlers brought to North America as a garden herb. In Portland, garlic mustard's greatest threat is to native woodland wildflowers. It dominates and displaces most native understory species, reduces plant diversity and decreases forage for native wildlife, such as the Columbian black-tailed deer. Garlic mustard that invades road rights-of-way reduces visibility and significantly increases invasive vegetation control costs.

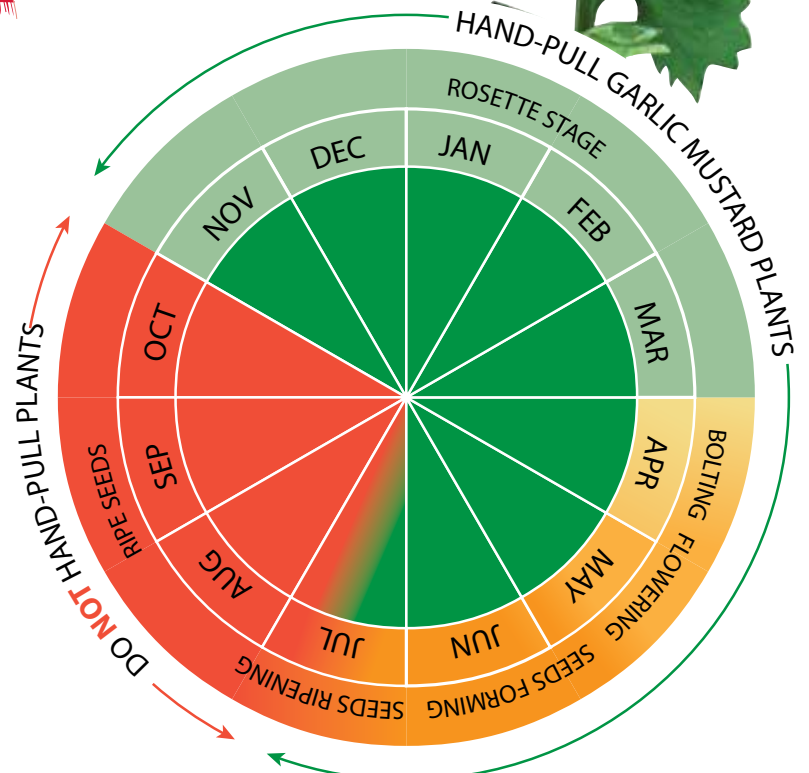
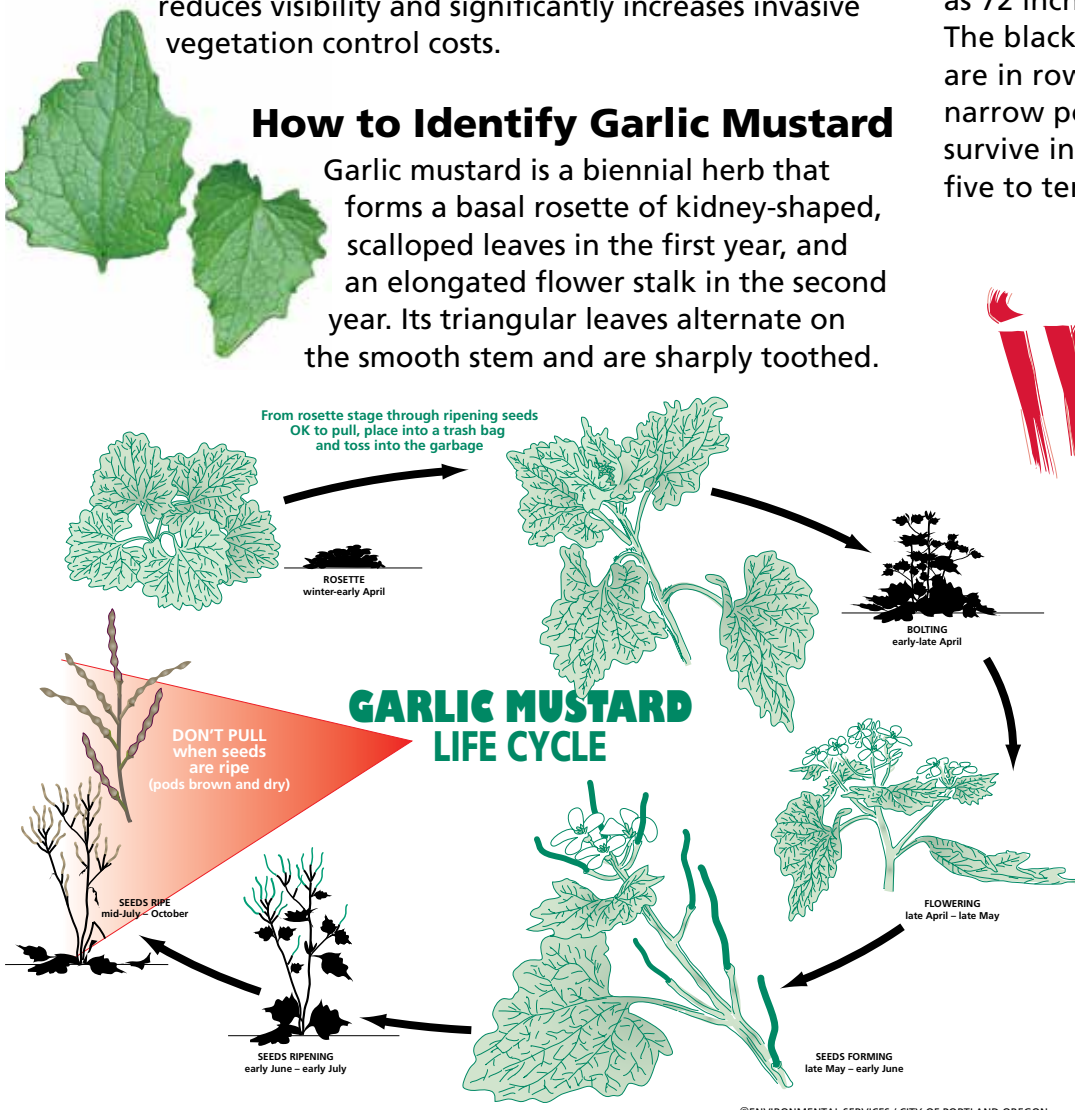
Garlic mustard flowers between April and May and forms seeds in early June, which ripen after several weeks. Plants generally have one flowering stem with numerous four-petaled white flowers. Crushed leaves and roots often have a distinct garlic odor. Plant height ranges from 12 to 48 inches, though plants as short as 1 inch or as tall as 72 inches are not unusual. The black, oblong seeds are in rows within a long, narrow pod and can survive in the soil for five to ten years.



invasive!

How to Identify Garlic Mustard

Garlic mustard is a biennial herb that forms a basal rosette of kidney-shaped, scalloped leaves in the first year, and an elongated flower stalk in the second year. Its triangular leaves alternate on the smooth stem and are sharply toothed.



Clip and save these tips. ✂

GARLIC MUSTARD

REMEMBER!

DO

- **DIG** – Getting the root out reduces the number of re-sprouting plants.
- **BAG** – Be sure your plants don't cause a problem for someone else.
- **HELP** – Neighborhood groups listed here may be sponsoring work parties.
- **WATCH** – Keeping your patch clear prevents new seed from forming, even if the plants are past flowering.

DON'T

- **MOW** – Mowing does NOT effectively control garlic mustard, since flowers and roots are still free to make seed.
- **THROW** – Throwing pulled plants on ground or street allows them to continue flowering and setting seed.
- **COMPOST** – Putting garlic mustard in compost or yard debris bins risks spreading plants to new locations.

How to Control Garlic Mustard

HAND-PULLING: Hand-pulling garlic mustard requires care and persistence, and thoughtful disposal of the plants. When pulling garlic mustard, be sure to get as much of the root as possible. Roots left in the soil typically re-flower as shorter plants, making the infestation harder to manage. Mowing is just as bad. A small percentage of newly-sprouted plants flower in May or June, requiring additional hand-pulling.



PLANT DISPOSAL: Put pulled plants in trash bags and put bags in your garbage. Yard debris bins or composting may not fully kill the plants, risking spread to new locations. Be sure to tie the bags tightly so pieces don't fall out and start a new infestation.

MONITORING: It's critical to watch for new plants to prevent formation of more seeds. Garlic mustard plants flower for several weeks, and then green seeds ripen for several more weeks. You can safely pull ripening plants until the seed pods begin to dry and seeds turn black. Then the risk of spreading new seed outweighs the benefit of pulling the plants.

Watershed



Watershed Stewards Connection

Jennifer Seamans, Watershed Resource Center, 503-823-2862 or watershed@swni.org

For more watershed events and workshops, sign up for the SW Watersheds email newsletter by emailing Jen at watershed@swni.org or call 503-823-2862. For watershed stewardship resources for landowners or volunteers, see <http://wrc.swni.org>

Watershed Groups Contacts and events

Dickinson Park Stewards

Tony Hansen, 503-317-3914 or tony@projectconniption.com.

Friends of April Hill Park

Jill Gaddis, aprilhillpark@gmail.com or <http://swni.org/aprilhillpark>

Friends of Falling Creek

Sally Willson, sallyshappygarden@yahoo.com

Friends of Gabriel Park

February meeting, 3rd Wednesday (3/16), 7:00 pm, SW Community Center. Contact friendsofgabrielpark@gmail.com or www.friendsofgabrielpark.com

Friends of Marquam Nature Park

Robin Jensen, fmnp@comcast.net, 503-799-8435. www.fmnp.org

Friends of Marshall & Maricara Parks

John DeLance, FriendsOM2P@gmail.com. <http://swni.org/fommp>.

Friends of River View Natural Area

Fran Laird, Collins View Parks chair, friendsofriverviewnaturalarea@gmail.com, www.riverviewfriends.org

Friends of Terwilliger

Robin Vesey, jack-robin@spiritone.com or 503-293-1069.

Friends of Tryon Creek State Park

Lizzy Miskell, Volunteer Coordinator, lizzy@tryonfriends.org, 503-636-4398. www.tryonfriends.org Work parties every Saturday, 9-noon.

Friends of Woods Park

Jesse Johnston, jesse@teamjohnston.net

Multnomah Village Park

Randy Bonella, rmbonella@comcast.net, 503-293-9460

PCC Habitat Team

April Fong, afong@pcc.edu, 971-722-4422

Shomrei Teva at Neveh Shalom

Jordan Epstein, 503-245-6580, yaakovm@comcast.net. Work party: 3rd Sundays (3/20), 9:45-noon, meet next to lower parking lot of Congregation Neveh Shalom, off of SW Dosch just north of Beaverton-Hillsdale Highway.

Southwest Trails PDX

Don Baack, 503-246-2088. Work party: 1st Thursdays (3/3), 9-noon. For location, check swtrails.org. SWTrails meeting Thursday, (3/24), 7 pm at The Watershed at Hillsdale, 6388 SW Capitol Hwy.

Tryon Creek Watershed Council

Meeting, 2nd Monday (3/14), 6pm, Tryon Creek State Natural Area Nature Center, 11321 SW Terwilliger Blvd. Adra Lobdell, volunteer@tryoncreek.org.



Landscaping with Native Plants

Date: Thursday, March 31

Time: 6:00 pm - 8:00 pm

Location: Gregg Pavilion/Lewis & Clark College, 0615 SW Palatine Hill Road

Join Lewis & Clark, the Collins View Neighborhood Association (CVNA) and the West Multnomah Soil & Water Conservation District for an exciting workshop on landscaping with native plants and trees.

Learn the basics about why and how to plant with native plants and see some of the most beautiful options! Carefully selected native plants create wildlife habitat, conserve water, enhance stormwater management, and reduce the need for pesticides and fertilizers that can pollute local rivers and streams. Hear from CVNA neighbors and other local practitioners about "best practices" and success stories in our area.

For more information, contact Amy Dvorak, Sustainability Director for Lewis & Clark, 503-768-7794 or advorak@lclark.edu.

RSVP: <https://www.lclark.edu/live/events/131581-landscaping-with-natives> (Location & parking details available online)



Portland Parks & Recreation

For details, contact PPR Stewardship Coordinator Mary Verrilli, 503-823-9423, mary.verrilli@portlandoregon.gov

Marquam Nature Park

2nd Wednesday work party (3/9), 9-noon. Native planting. Register with Hands On Portland. Meet at the Marquam Trailhead located at SW Sherwood Drive.

Last Saturday work party (3/26), 9-noon. Register with Hands On Portland. Meet at the Marquam Trailhead located at SW Sherwood Drive.

Terwilliger Parkway

3rd Saturday work party (3/19), 9-noon. Native planting. Register with Hands On Portland. Meet by bathrooms on SW Terwilliger Blvd at SW Hamilton.

Woods Park

4th Saturday work party (3/26), 9-noon. Native planting. Meet at Stairway trail head located off of SW Woods Parkway.

Crossroads Community Garden

Work Party: March 15

Construction of the Crossroads Community Garden, located at Hillsdale Community Church (United Church of Christ) is expected to finish in March. The tool shed was installed in February; join us for a work party on Tuesday, March 15 starting at 1:00pm

to assemble the raised beds and any other tasks remaining. The new garden space will have three ADA accessible plots. Contact Laura Niemi at 503-823-1612 if you are interested in a plot.

Save the Date!
April 22 Dedication Planned

April Hill Park Work Party



**SATURDAY,
MARCH 12
9AM TO 12-NOON**

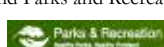
Invasive plant removal
Come help with the start of the
April Hill Park
Wetland Protection Project

This is a Community Event all are welcomed
Children must bring an adult

Dress for weather &
Tools provided

Portland Parks and Recreation

Friends of April Hill Park
AprilHillPark@swni.org



Maplewood Neighborhood
Association
maplewood@swni.org

Get Published
inkwater.com
INKWATER.COM

local, author-friendly
503.968.6777
publishing, marketing, editing, design



Stop paying high
printing costs!

For inkjet & laser toner cartridges - great selection & pricing..

Cartridge-Network
The perfect choice for Home & Office
6800 SW Beaverton Hillsdale Hwy, Portland 97225 · 503-246-0665

Free Cartridge
NEW CUSTOMER PROMOTION*
In Raleigh Hills!

New customer promotion* Buy 4 get 5th FREE
Special pricing applies to factory remanufactured or compatible ink & toner cartridges

Printer Sales and Service



April Hill Park Update *Jill Gaddis, Friends of April Hill Park*

April Hill Park Wetland Protection Project will start construction of the soft trails, boardwalk and bridges this summer, 2016. We are so excited about how the project is moving forward. We are looking forward to construction starting in July.

A work party is scheduled for Saturday, March 12, 9am to 12pm. We will be removing invasive plants and preparing the site for new plantings this coming fall and winter, while preparing for a trail change. Tools are provided. This is a community activity, all are welcomed.

Children must bring an adult. Check out our site at swni.org/AprilHillPark. Thank you to all the volunteers who come out to work together with Portland Parks and Recreation. Your hard work is bringing the April Hill Park Wetland Protection Project closer to a realization.

This project is funded by the Metro Natural Areas Bond Measure's Nature in the Neighborhood Capital Grants Program, Portland Parks & Recreation, and generous donations by neighbors. Contact us at: AprilHillPark@swni.org.

We'll miss you Jan... and thank you!

by the City of Portland Crime Prevention Program



Jan Weston at a Marshall Park National Night Out party with his dog Pepper

Wherever Jan Weston showed up to a community event, his dog was right by his side. Watching him interact with his beloved dogs revealed a lot about the man. Fortunately, we saw a similar devotion to his community work, including years of work on the SW Neighborhoods Inc. (SWNI) Public Safety Committee. It was a sad day to learn that he passed away in January. To say that we'll miss him is an understatement.

Jan recommended that we include Margaret Mead's quote on the agenda for the safety committee:

"Never doubt that a small group of thoughtful, committed citizens can change the world; indeed, it's the only thing that ever has".

He was one of those committed citizens. According to Sylvia Bogert, Executive Director of SWNI, Jan's work for SWNI got into full swing when he volunteered to help fix their computers over two decades ago. Says Sylvia, "He was always on hand with whatever needed to be done." Some of the other events besides the committee he was involved in include:

- Fanno/Tryon Creek Watershed Management Plan Advisory Committee
- Marshall Park Neighborhood Association
- Ride-share volunteer transporting seniors to appointments
- SWNI board member
- Chief's Forum
- Advocacy on safety issues. He testified in Salem on issues that he cared about and would benefit our community

On the SW Public Safety Committee that he served on since 1995, he regularly volunteered for subcommittees and other projects. He helped organize the bike rodeo and safety fairs that were held at Bridlemile, Maplewood and Markham Elementary schools. He loved the Community Policing Reception that the public safety committee put on every

October. He helped with the planning of that event and MCed the ceremony twice.

The City's Crime Prevention Program recognized his efforts in establishing Neighborhood Watches in the Marshall Park neighborhood at an awards ceremony in 2012. Not only did he establish a watch on his block, but performed outreach to residents living on other streets in his neighborhood to get them involved as well. At least one other group was formed as a result of his efforts. Stefanie Adams, Crime Prevention Coordinator, and Officer (now Sergeant) Hughes led the watch training on his street and were impressed by how organized his block was at their first neighbor meeting with a contact list already prepared. His enthusiasm for the program was infectious.

Jan Weston cared about the safety of his community and his SW neighbors. Marcia Leslie, sums up his contributions nicely:

"Jan Weston was one of the most cheerful people to work and associate with. When anyone would ask how he was, his reply was always said with a grin, 'Almost perfect!' He was passionate about personal, bike and transportation safety, and frequently lobbied in Salem for safety-related legislation. He served on Portland Police advisory boards and oversight committees, and believed strongly that the majority of the officers were truly 'Sworn to Protect, Dedicated to Serve' the city of Portland. He was always willing to lend a helping hand, and pitch in to organize and run community events -- from Neighborhood Watch training to bike safety rodeos for children (he could repair bikes practically blind-folded) and much more. He 'walked the walk', being alert to suspicious activity in his neighborhood while walking his dog, and reporting it when appropriate. He will be greatly missed."

It's hard to see such a congenial person who gave so much to our community leave us. It's with heavy hearts that we say goodbye and thank you.

Do dogs prevent burglary?

by the City of Portland Crime Prevention Program

We typically don't mention dogs as a security strategy in our crime prevention materials. This is despite residents occasionally questioning whether dogs are an effective intervention.

We won't advise someone to adopt a dog because they want to further secure their residence. With the money required to care for one, a resident can direct those funds to other forms of home security such as alarms and camera surveillance. However, if a neighbor has an affinity to this wonderful animal, then a dog's contribution to home security can be an added benefit.

Having a dog may or may not deter a burglar. One officer interviewed a prolific offender who stated that dogs weren't a deterrent in the homes he targets. Another long-time burglar who shared his secrets on the television show 20/20 stated that he would avoid any home where dogs were present whether that was indicated by a sign posted or barking. In other cases, officers have taken police reports where burglars entered a home through a doggy door. As you can see, whether a dog scares off a criminal depends on that individual. It will also depend on the dog.

The presence of dogs can be preventive if:

- They bark when they hear someone approach the home. Like the annunciator on an alarm system, barking calls attention to a home, which is more exposure for an offender. A criminal doesn't want to be caught and this added disturbance makes that home a riskier choice.
- Their behavior indicates some unpredictability. If it's not clear whether an offender can safely enter and exit a residence, there is greater risk.

There are some breeds that aren't inclined to bark or protect a household.



Sam broadcasts to all neighbors when he hears a knock on the door.

A docile Labrador retriever may not stop a thief. Whereas talkative German shepherd may inspire fear in a would be intruder. However, a resident may not be compatible with a breed geared toward protection. If a dog barking at the delivery or garbage truck provokes frustration, that breed may not a good fit for the household. Of course training can help in any of these areas.

If you want to increase the security of your home, consider other security options. If you do want a dog, their presence can be beneficial, but should not be the only strategy you use to protect your home.

Crime Prevention Contacts

- Do you have concerns about ongoing crime or crime-related livability issues in your SW Portland neighborhood? Contact Jenni Pullen, Jenni.pullen@portlandoregon.gov, 503-823-4257.
- Want to form a Neighborhood Watch or Foot Patrol? Contact Mark Wells, Mark.Wells@portlandoregon.gov, 503-823-2781
- Visit our website at www.portlandoregon.gov/oni/cp for prevention materials.

Moda Insurance scam calls

by the City of Portland Crime Prevention Program



Over the last month, scammers have attempted to capitalize on consumers' confusion with the Moda Health Plan. According to the state of Oregon Department of Consumer and Business Services, the company was recently under supervision by the state due to "excessive operating losses and inadequate capital." For a few weeks at the end of January and early February, there was real uncertainty about the future of this company. Naturally, consumers were concerned about how the instability would impact their health plans. This is where scammers came in.

Residents in Oregon received calls from scammers impersonating Moda representatives who claimed that they could help them sort out their plans. The offenders asked call recipients to verify

their personal information including Social Security numbers. It was a classic phishing scam where the goal is to collect information that can be used for identity theft.

The scams that play on victims' emotions tend to be the most successful. For example, if a victim feels frantic or confused based on a scammer's pitch, they will be more vulnerable. In response, they may act before having a chance to research and evaluate the information that's being presented. Being skeptical about all unsolicited emails, phone calls, mail and texts is a good practice. Never provide information immediately in response to unsolicited communications. If you are concerned about what the person is communicating, find a phone number listed on your statements or from a reliable resource online and contact the company directly to check out the facts.

Moda Health Plan has reached an agreement with the state of Oregon and will implement a plan to stabilize its financial condition. According to the state, there should be no disruption in service to policy holders. If you receive a call from someone claiming to be with Moda, be wary and don't disclose personal information.

The website for the State of Oregon Department of Consumer and Business Services is <http://www.oregon.gov/DCBS/Insurance>.

Sign Up for publicalerts.org

PublicAlerts is administered by the Portland Bureau of Emergency Management on behalf of the region. The lead partners are the City of Portland and Clackamas, Clark, Columbia, Multnomah and Washington counties. If you want to receive real-time emergency communications by text, email and/or phone, sign up at publicalerts.org. The types of notifications you may receive:

- Boil water notices
- Chemical leaks
- Police critical incidents. If the police are responding to a critical incident in your area that is a danger to the neighborhood, you may be contacted to stay inside or delay your return

home. Because you include your address, emergency dispatch at the Bureau of Communication can communicate to impacted areas.

If you are mobility-impaired or may need some assistance in the event of an emergency, there is a place to include this information when you register.

Update your information as needed. If you move or change your phone number, go to your online account and enter the new information.

PublicAlerts provides real-time information that can keep you and your family informed in the event of an emergency. Sign up today and encourage your neighbors to do so as well.

Business Identity Theft

by the City of Portland Crime Prevention Program



Business Identity Theft is increasing with time. Business id theft occurs when a criminal impersonates a business for illicit gain. This may include filing false records in the name of the company, taking out loans or opening business accounts with suppliers, perpetrating wire fraud or in some cases using business information to create W-2's for individual tax refund fraud. This kind of activity is increasing because business information can often be obtained online and there are typically more resources to exploit.

A lot of information on the company is available to the public. The Federal Employer Identification Number (EIN), which is the business equivalent of a social security number, officer and other information can be researched online through various channels. Many fraudulent accounts can be established using the business' name, address and EIN.

Some suggestions for being proactive in your business as advised by BusinessIDTheft.org:

- Understand the provisions of your banking agreements. What are the reporting timelines and liability coverage for fraud? This will bring to light what your potential exposure may be if there is fraud. It is important to know since consumer and business protections differ. You may need to check your accounts more frequently to detect problem activity.
- Institute security measures wherever possible. If you wire transfer money regularly, see if you can implement two-factor authentication. If you don't wire transfer funds, see if your bank can block these financial transactions altogether.
- Check your financial accounts daily.
- Be protective over your EIN. Consider that information as you would a social security number. Does the other party need this information? Limit the company information that you provide to only what's needed.
- Keep all business identifiers and sensitive information in a secure location that is only accessible by authorized individuals.
- Enroll in positive pay. When you write checks, you communicate to the bank the check numbers and amounts. Where the amounts you report and the checks presented for payment at your bank differ, the discrepant transactions will be flagged as an exception and the bank won't pay.

- Monitor your business registry with the Secretary of State to ensure that there have been no changes to your company address or business information.
- Micro-shred all documents containing business identifiers and financial information. Timely shred all unneeded documents that include personal information for business, customers and employees.
- Review your business credit reports and enroll in credit monitoring. The major agencies that provide these services are Dun & Bradstreet, Equifax, Experian and TransUnion. Do your research on the best monitoring; ideally they alert you immediately when any loans are opened in your business's name. If you don't need to establish any new accounts, you may consider implementing a security freeze.
- Train your employees on how to protect sensitive information. Only grant access to certain information if the employee needs it.
- If you receive correspondence about a purchase you didn't make, investigate immediately. Be careful for phishing scams, of course, but you may need to directly contact the supplier to check out the information.
- If you receive mail correspondence from the IRS after you file your business return referring to your filing as an amendment, immediately follow up with them directly.
- Establish business computer security practices including installing and updating firewall and anti-virus protection, requiring long and complicated passwords of employees that must change regularly; updating software timely; having strong passwords on company Wi-Fi or eliminating Wi-Fi; and compartmentalizing access so that employees only have access to the information that's relevant to their job.
- If you allow employees to access your network remotely, ensure that the employee has firewalls, anti-virus and other protections in place. Utilize a virtual private network.

There are many more security considerations. Be proactive as much as possible. Running a small business is challenging enough. Fraud can be a significant event that can debilitate a company if it's not detected and dealt with immediately.

Spring Into Action! Register to Vote or Update Your Registration

Catherine McMullen, Multnomah County Elections

Here comes spring!

It is the perfect season to start a garden, clear out clutter, and register to vote! If you are a first time voter or new to Oregon, you'll be pleased to learn that Oregon is a vote by mail state. That means all registered voters are mailed a ballot before each election. You'll return your voted ballot by mail or to any official drop site in Multnomah County.

Official Ballot Drop Sites on the west side include all library locations, A-Boy Supply at 7365 SW Barbur Blvd. (24-hour) and a walkup location in Pioneer Courthouse Square downtown (24-hour). Voted ballots must be received by 8:00 pm on Election Day.

You can register to vote if you are a resident of Oregon, if you are a US citizen, and if you are at least 17 years old. If you register to vote at age 17 you will receive your first ballot when you turn 18.

To vote in an election you must be registered 21 days before Election Day. The May 17, 2016 Primary Election registration deadline is April 26, 2016. The November 8, 2016 General Election deadline is October 18, 2016. You can update your registration information anytime.

There are three ways to register to vote. 1) Register to vote online at oregonvotes.org. 2) Complete a paper Voter Registration Card. 3) Be registered to vote through Oregon Motor Voter automatic registration.

The Secretary of State (SOS), DMV, and Multnomah County Elections

have partnered to provide automatic voter registration to eligible Oregonians. You can be automatically registered to vote if you recently applied for your original, renewal, or replacement license or ID card at the DMV. After one of these interactions at the DMV you will be contacted by mail, giving you the opportunity to sign up with a political party or to opt out of registration. If you choose not to respond, you will be automatically registered as a non-affiliated voter (not a member of a political party). Learn more at sos.oregon.gov.

When should I update my voter registration information? You should update your voter registration information any time you change your home or mailing address or if you will be away on election day. You should also update your registration if you change your name or to select a political party. You can check voter registration information online at oregonvotes.org or call Multnomah County Elections. If you have not received your ballot for an election please call right away so we can help you get your ballot in time.

Questions? If you would like more information please visit us online at mcelections.org, email elections@multco.us, call 503-988-3720, or visit the Multnomah County Elections Office at 1040 SE Morrison St. Portland, OR 97214. Each voter's situation may be different and we can help.

Public Safety Committee
James Nobles, 503-936-3065, james@vacantfuture.com

Jenni Pullen, Crime Prevention Coordinator with the Office of Neighborhood Involvement, was our guest speaker in February. The subject was identity theft and general safety tips for using your credit/debit card.

Tips: Do not give out your social security number, even to companies such as cell phone companies. They can be hacked and your details end up in the hands of criminals. Ask companies requesting your social security number to use a different piece of identification.

Shred everything that might contain personal and/or financial data. No matter how small or insignificant it might be.

When using public ATM, gas pumps, etc...check the card reader for tampering. Criminals create their own card readers that fit over the card reader on public ATM's for example. This allows them to read the data off your card and create copies. If a card reader looks damaged or tampered with, find another to use and report it to the company operating the device.

Emergency Preparedness Fair: The date for the emergency fair has been set for June 25th, location is the Multnomah Arts Center. Brett Matthews from the Hillsdale neighborhood is coordinating the event on behalf of the Public Safety

Committee. An update on planning will be available at the next meeting.

March Guest Speakers: A staff member from the Portland Bureau of Emergency Management will be on hand for a general update and Q & A.

Jenni Pullen will be a guest speaker as well with prevention information regarding burglaries.

WomenStrength Classes: The next WomenStrength class is scheduled for Thursdays on June 2nd, 9th and 16th at Jackson Middle School from 5:45-9:00 pm. Registration opens on May 3rd. Women can call 503-823-0260 or signup online at <http://www.portlandoregon.gov/police/58060>. Seats are on first-come, first-served basis.

The WomenStrength Program is also looking for more volunteers to teach the classes. If you are interested in being a volunteer, contact:

Sara Johnson
WomenStrength Director
Portland Police Bureau
Family Services Division
Ph: 503-823-0262
sara.johnson@portlandoregon.gov

Next Meeting:
Thursday, March 3, 7 PM
Multnomah Arts Center, Room 33
7688 SW Capitol Hwy

South Portland Business Association

WWW.SOUTHPORTLANDBA.COM
American College of HealthCare Sciences invites you to join them in Greece! Date: June 13 - 18, 2016. Step off the beaten path and immerse yourself in an aromatic, botanical, and wellness experience on the island of Syros, Greece. You'll spend 5 nights, 6 days discovering the essential oils and herbs of the Mediterranean, learning new tools to achieve vitality and wellness, and experiencing all that this rich culture has to offer. Open to the public and lead by Dorene Petersen, President of ACHS - Hurry, **Early Bird pricing ends March 6th.** more info. visit: <http://hubs.ly/H0246Cg0> or phone Stephanie

Torres; Community Programs & Events Manager at 503.244.0726

FREE Electronics Recycling Collection Saturday, April 9th, from 10 am - 2 pm at Sunstone Montessori School is teaming up with Green Century Electronics Recycling 6318 SW Corbett Ave. Items accepted/ drop off on the school's black top: VCR's, DVD's, stereos, computers, laptops, monitors, printers, scanners, fax machines, keyboards, ink cartridges, televisions, smart phones, cameras, telephones, washers & dryers, ovens & stoves + misc. electronics.

Happy Spring!
~ Malea, SPBA board member/Event chair/secretary

Equity and Inclusion Action Team

Glenn Bridger, 503-245-0729, gbridger@teleport.com

The Oregon Symphony selects new orchestra members through blind auditions in the early rounds of tryouts. This allows performance to dominate, and appearance, gender, and race to remain behind the curtain. The first impressions are made based on music, rather than visual qualities. This positive introduction provides a foundation for more insightful later auditions towards selection.

Would it not be wonderful were we able to absorb similar positive impressions of all people around us, before opening our eyes and placing a visual name to who we see? Listening to radio announcers; talking with people on the phone; reading the written word. These all provide a chance to see the depth of a person's character without coloring it with the visual signs that may take equal weight in our analysis of who a person is. They can give us the needed "blind audition" to see the real person.

Day by day, we do not have this option of hearing before seeing. A long-time standard accepted by many is to "ignore"

race or other attribute. Sorry. That may work for some people, but I know from my own experience, and from the equity statistics I have seen, that this does not work.

The impressions of many years rest within each of our minds, and for many those impressions are to not trust or revere people who are not like us. We have years of experience in not talking about these embedded impressions on race, gender, and ability. That has left us with the dramatic inequity we have today. Let's open discussion on these topics within our families and communities, and talk through our feelings and observations. Will it solve the inequities? No, but it is a start. We already know that not talking has left its bad mark on our society.

Respectfully
Glenn Bridger

Next Meeting:
Monday, March 28, 5:30 PM
Multnomah Arts Center, Rm 4
7688 SW Capitol Hwy

Land Use

John Gibbon, 503-708-6708, jtgorygun@aol.com

Jim Gorter was the committee's guest in February for our discussion of a demolition/development resolution produced by the United Neighborhoods for Reform (UNR). Forty three of City of Portland neighborhoods have supported the resolution. Issues include the current 35-day delay on issuance of permits (allegations that some builders intentionally time their applications to make it difficult for neighborhood associations to respond), rules related to asbestos, the dismantling of houses instead of their demolition, the need for a single source of information from the city. Jim reported that UNR has door hangers with information on demolitions, including contact information to the state Department of Environmental Quality (DEQ). Jim also noted that there is a proposal to require that all houses built before 1916 should be "deconstructed" rather than demolished.

Committee members next discussed the update of Portland's comprehensive plan. One committee member expressed concern that the city may be moving away from using neighborhood associations as a primary vehicle for public involvement and moving toward a process that focuses more on an effort to

engage people who have historically not participated in planning and decision making. This focus grows out of the city's emphasis on equity. But there is still language in state statutes regarding notice to neighborhoods when land in those neighborhoods are subject to land use cases. So there's a balance to be found in seeking equity without derogating the role of neighborhoods.

City Council is now holding work sessions on their commissioner-sponsored amendments. There will be a public hearing on April 14, 6 to 9 pm, on those amendments.

In neighborhood reports, Claire Coleman-Evans reported that in Brilemile there is a proposal to develop a four-lot land division. An environmental review will be required; there is a confluence of two creeks on the site. Robert Lennox of South Burlingame gave a report on the proposed development at the site of the Golden Touch restaurant. See the detailed information in the Transportation article on this page.

Next Meeting:
Tuesday, March 15, 7:15 pm
Multnomah Arts Center, Rm 4
7688 SW Capitol Hwy

Parks and Community Centers

Kirky Doblje, 503-246-7970, kdobseven@gmail.com

Astrid Dragoy of PP&R was our guest in February. She thanked SWNI for participating in PP&R's fundraiser selling holiday wreaths to raise money for PP&R's Environmental Education program. In all, \$16,000 was raised. She reported on recent stewardship work to remove ivy and plant plants at sites including Sylvania Natural Area Park and Marshall and Gabriel parks. Friends of Marquam Nature Park and Friends of Woods Park did work in their namesake parks. Astrid also reported on work to maintain and improve trails.

Butterfly Park, a very small park just south of Willamette Park. The idea was to create habitat there for butterflies. But the site keeps evolving back to its more natural riverine habitat and PP&R has decided to let that evolution proceed. A new butterfly-friendly habitat will be created in the centennial oaks grove in Willamette Park.

Astrid also reported on the PP&R re-organization. One of the big changes is to drop the distinction between natural areas and developed parks. It was somewhat of an artificial distinction because many parks have both natural and developed components. Astrid will be in charge of the westside parks. Terri Davis will be in charge of all the community

centers city-wide. Brian Aptekar will lead the lands group. Eileen Argentina will lead recreation services. Rachel Felice will still be our natural areas contact.

In neighborhood reports, Jill Gaddis reported that the groundbreaking for natural area improvements in April Hill Park will start in July. Events coming up include a "bird walk" in April and a work party in May. Fran Laird reported on the River View Natural Area (RVNA). In January, City Council approved the RVNA Management Plan.

PP&R is taking cuts in the upcoming fiscal year. The Parks Budget Advisory Committee (BAC) sent a January 31, 2016 letter to City Council criticizing those cuts and noted that to foster equity, money is needed for SUN schools and park rangers to address growing homelessness.

Changes to Duniway Park remain an issue. Both Homestead and South Portland neighborhood associations are directly affected. Issues include artificial turf, parking, and lighting.

Next Meeting:
Thursday, March 3, 7 PM
Multnomah Arts Center
7688 SW Capitol Hwy



Schools

Will Fuller, 503-764-5501, schools@swni.org

Promoting the BEST possible schools for ALL students in Southwest Portland through STRONG neighborhood involvement.

School Boundary – Superintendent recommendations coming this month

On February 9, DBRAC (District Boundary Review Advisory Committee) gave their recommendations "2B" to Superintendent Smith, and she MAY HAVE given the school board her proposed changes. The board will vote sometime this month. One of the problems with early press deadlines on fast-moving news is that we are having to guess, but right now further changes in SW Portland should be minor, to address under-enrollment in Hayhurst and Bridlemile and some crowding at Maplewood. Some may be delayed until 2017-18. So, as you read this in March, how did the crystal ball do?

Go to swni.org/schools or to the www.pps.net website and click on the Boundary Review link for more.

Techquity Project New Grant Proposal Approved

We were fortunate to have received full funding for our follow-up project to promote equity in tech access, and we are beginning work on consulting the community and a spring activity. The exact nature of the activities will be determined after consultation with affected families and partners like the SUN programs and Stephens Creek Crossing. Visit swni.org/schools for pictures and other materials from TechConnect and the latest on Techquity.

PPS long-range projects for SW Portland

Bond Round 2: Look for the start of a campaign to pass a ballot measure in November for a second bond in the series of six to modernize buildings in Portland Public Schools. Not much for SWNI-area schools yet. Lincoln, Madison and Benson are slated for this grant, with less extensive upgrades to other buildings. Our time is coming.

Smarter Balanced Tests in perspective: With a favorable review of the Smarter Balanced tests, they will be integrated into a more comprehensive evaluation program, but not abandoned. The issue isn't really with the tests, but with the weaknesses in school programs that are revealed by test results.

Getting serious about equity: There's been a lot of talk about equity, and little or no change in disparate results for students of color and low-income students. Time for a change, even here where disparities are similar to other parts of the city.

Emphasis on early education. High school graduation rates begin in kindergarten. The results of such early emphasis should be starting to show up in later grades, and our local schools are all strong in the early grades.

Next Schools Committee meeting:
Thursday, March 17, 7 PM
Multnomah Arts Center, Rm 4
7688 SW Capitol Hwy., at 31st

Transportation

Roger Averbeck, 503-679-1447, transportation@swni.org

The committee met on Wednesday February 17. Committee members were disappointed by the recent news that SW Portland will not have a Sunday Parkway event this year. Ideas were discussed for alternative events with a bike/walk component. One idea was to hold a bike/walk event as part of the Multnomah Days celebration. Another idea was to hold such an event along the fairly level and very beautiful Terwilliger Parkway. A similar bike/walk event occurred several years ago to celebrate the Terwilliger Parkway centennial. Concern was expressed that the Portland Bureau of Transportation (PBOT) may have a bias against bike/walk events in SW Portland because of the hilly terrain. In addition to the Terwilliger Parkway, there are some flat stretches of roadway in SW Portland like Multnomah Blvd and South Waterfront. Committee members supported SWNI joining with PBOT in hosting a Sunday Parkway event in 2017, in southwest Portland, if the SW business associations support this event.

The committee reviewed and discussed a draft updated inter-governmental agreement (IGA) between the City of Portland and Metro regarding the SW Corridor Plan. Concern was expressed that the wording of the IGA was vague and could support various planning positions such as "provide a new range of housing choices". The current draft IGA deletes important language and references to, for example, the Barbur Concept Plan. Committee members supported writing more specific language that: Requests that Metro provide annual progress reports; strengthens the IGA's commitment to the city's approved land use vision expressed in the Barbur Concept Plan; and includes comments and letters from SWNI and its neighborhood associations in Metro's public community involvement documents.

The transportation committee encourages individual comments on the Portland Transportation System Plan (TSP) Stage 2, particularly Chapters 12 and 13 to make sure those past

planning efforts are accurately included in the TSP to guide future land use and transportation planning decisions. Hearings before the Planning and Sustainability Commission (PSC) are on March 8 and March 22, with a comment deadline to PSC of March 22. For more information and how to comment:

<https://www.portlandoregon.gov/transportation/68805>

The committee discussed the proposed redevelopment of the Golden Touch restaurant property at the intersection of SW 19th Ave and Barbur Blvd. The proposal is for a building with approximately 223 dwelling units, 45,000 square feet of commercial space, and 452 parking spaces. The zoning is CG (General Commercial) and generally allows such use. There is support for this type of development, but from a transportation perspective, one of the committee's main concerns is how the extra traffic created by the development will be managed. In 2015 a consultant did a traffic impact analysis (TIA) that considered motor vehicle traffic impacts with recommendations such as widening Barbur Blvd to provide a center left turn lane between SW 19th and Moss; and extending SW 17th up to a new intersection with Barbur. Concerns were expressed that the TIA and the current land use proposal did not adequately consider active transportation modes; and whether the proposal is properly coordinated with the funded Barbur Demonstration Project that enters design phase in 2016, with construction expected in 2017. The committee supports full city standard sidewalks on all frontages; a bike lane on SW 19th; and a protected bike lane on the Barbur Blvd frontage. The committee recommended that PBOT further study impacts on active transportation in the area, including Barbur, Spring Garden, SW 19th and SW Capitol Hill Rd.

Next Meeting:
Monday, March 21, 7:00 pm
Multnomah Arts Center, Rm 29
7688 SW Capitol Hwy

Community



Senior Center

7688 SW Capitol Hwy.
503-244-5204
9 AM - 3:30 PM, M-F

Senior Center Registration: Annual registration is \$20 for an individual and \$30 for a couple. Registration includes our monthly newsletter and is required for participation in most activities, classes and trips. Registration is open to all individuals 55 & older, or if the spouse is 55 years of age. Limited scholarships are available.

Buddhist Meditation
Carole Melkonian, RN, L.Ac.
9:00 - 10:15 AM, Mondays

QiGong
Carole Melkonian, RN, L.Ac.
10:15 - 11:00 AM, Mondays

Stability Ball & Yoga
Peggy Frieze (\$3)
9:10 - 10:10 AM, Tues. & Thurs.

Yoga
Peggy Frieze (\$3)
10:00 - 11:30 AM, Fridays

Rhythmic Exercise
Peggy Frieze (\$3)
10:15 - 11:15 AM, Tues. & Thurs.

Foot Clinic
2nd Wednesday (\$35)
Call for appointment

Acupuncture
Carole Melkonian, RN, L.Ac.
Mondays (\$40/\$50)
Call for appointment

AARP 55 Alive Driving Safety Program (\$15/\$20)
Next class April 11 and 12.
Call to register

Senior Law Project
2nd and 4th Tuesdays
Call for appointment

Senior Health Insurance Benefits Assistance (SHIBA)
12:00 - 3:00 PM, Thursdays
Call for appointment

Volunteers Involved for the Emotional Well-being of Seniors (VIEWS) Support Group
Thursdays 10:30 to 11:30 AM
A program of Cascadia Behavioral Healthcare's Older Adult Services
Call (503) 261-6181 to be pre-screened. Spaces are reserved.

SW HOPE: Local Food Drive

Connects with Global Hunger-Awareness Movement to Feed Hungry People in SW Portland



Volunteers collect SW HOPE donations at Neighborhood House's emergency food pantry.

Rider's Club Trips: Public transportation can open the doors to so many opportunities to enjoy what Portland has to offer. Join us as we explore free and low-cost events around Portland, such as concerts, theatre and art exhibits. TriMet bus tickets for all Rider's Club trips are free and escorted by our Ride Ambassador who is trained to assist you. Come to the center to sign up.

Thursday, March 17 Portland Art Museum, Art and Conversation.

- FREE!
- 8:35 Meet at Senior Center (back parking lot door)
 - 8:55 Board #45 in Multnomah Village
 - 9:30 Coffee, tea, conversation in Mark Building
 - 10:00 Museum opens. Meet in Whitsell Auditorium
 - 10:15 Lecture: Contemporary Native Art and Edward Curtis legacy photos. Julia Dolan, curator of photography and Deanna Dartt curator of Native American Art
 - 11:15 View exhibits

- 11:55 Meet in main lobby for those going to lunch as a group
- 12:10 Lunch at Pastini
- 1:22 Board #44 at SW 5th/Alder
- 1:40 Arrive at Senior Center

SW RideAbout Shuttle

Offered in partnership with Ride Connection.

To/from Senior Center:
Monday through Thursday
8:30 - 10:00 AM pick up
12:45 - 2:15 PM take home

- March Shopping Schedule**
9:45 AM - 12:15 PM
- 3-1 Raleigh Hills Fred Meyer or New Seasons
 - 3-2 Safeway or Dollar Tree
 - 3-7 Costco or Winco

- 3-8 Value Village or Joann Fabrics
- 3-9 Raleigh Hills Fred Meyer or New Seasons
- 3-14 Uwajimaya or Target
- 3-15 Burlingame Fred Meyer or Barbur World Foods
- 3-16 Walmart or Winco
- 3-21 Thriftway
- 3-22 Walmart or Winco
- 3-23 Raleigh Hills Fred Meyer or New Seasons
- 3-28 Grocery Outlet or Target
- 3-29 Trader Joe's or Beaverton Fred Meyer
- 3-30 Neighborhood House Food Box Program Site (3445 SW Moss Street)

March Trips: Registration begins Tuesday, March 1 at 9:30 am. Come in person to register for recreational trips. Exact change is requested. Current Senior Center Registration required for all recreational trips.

Troutdale Historical Society Museums

Tuesday, March 8
10:30am - 2:45pm

\$8.00 suggested donation
\$8.00 admission
\$\$ for lunch at Tippy Canoe
We'll tour the Harlow House, Depot Rail Museum, and the Barn Exhibit Hall. Currently featured is "King of Roads," celebrating the 100th birthday of the Historic Columbia River Highway.

Fort Dalles Museum

Wednesday, March 9
9:00 am - 3:45 pm

\$12.00 suggested donation
Admission: \$4.00 seniors 55+, \$5.00 general
\$3.00 for Meals on Wheels sack lunch, or bring your own
Step into the world of the Wild West! Built in 1856, the Fort Dalles military fort stood at one of the old west's most pivotal places in history.

Oregon Jewish Museum

Tuesday, March 15
10:00am - 2:00pm

\$4.00 suggested donation
\$3.00 admission
\$\$ for lunch at Matzalan Mexican Restaurant
The Oregon Jewish Museum is unique as the only Jewish museum in the Pacific Northwest. Explore on your own, or take a guided tour of the museum's newest exhibit, Ruth Gruber, Photojournalist.

Gruber captured 50 years of groundbreaking images, including the Soviet Arctic in the 1930s and Jewish refugees on the ship Exodus 1947.

Antique Alley

Wednesday, March 16
11:30am - 2:00pm

\$4.00 suggested donation
Antique Alley features 100 dealers displaying an enormous selection of vintage housewares, furniture items, estate & costume jewelry, home décor, kitchenware, textiles, original prints & paintings, militaria, advertising, clothing, music, books, toys and collectables of every genre. Whew! Bring a sack lunch, or visit one of the nearby eateries.

Trappist Abbey and Brigittine Monks

Wednesday, March 23
10:00am - 3:45pm

\$8.00 suggested donation
\$\$ for lunch at Blue Goat
Get ready for a delicious day: our first stop is at the Trappist Abbey, specializing in delicious fruitcake, date-nut cake, and honey. Then we'll sample wood-fired dishes at the Blue Goat for lunch. Last stop is the Brigittine Monastery and Confectionary, where the monks quietly go about producing some of the most delicious fudge and gourmet chocolate truffles in the world.

L.O.M. Vista Spring Café

Tuesday, March 29
11:15am - 2:00pm

\$3.00 suggested donation
\$\$ for lunch. Exact change or card, no checks please.
This cozy joint serves up pizza & other Italian eats, plus American chow!

The tenth annual SW HOPE: Feed the Hungry community food drive is underway and runs through March 27. As in previous years, the six-week drive offers several opportunities for community involvement, including family-friendly events at local restaurants to raise awareness and eliminate hunger in the SW Portland community. In addition to these dine-out-to-donate events, SW HOPE organizers will launch two new events: an Empty Bowls Community Soup Dinner on Sunday, March 6, from 4-6 pm, and a 5K/1K Family Fun Run bonus event on Saturday, April 2 starting at 9am at Gabriel Park. Proceeds benefit the Neighborhood House Emergency Food Box Program, which operates the largest pantry on Portland's west side.

The event was inspired by the Empty Bowls Project—a 25-year-old global, hunger-awareness movement that has gained popularity in many communities across the country. Local artists and Lewis & Clark College students will provide handmade bowls to be purchased along with a soup dinner to raise funds to prevent hunger in the community. The event takes place at Multnomah Arts Center at 7768 SW Capitol Highway. A donation of \$10-20 will be collected for a gourmet soup dinner and a hand-made ceramic bowl. Dinner will be followed by a showing of the

hunger-related documentary "A Place at the Table."

Another first-time event that supports SW HOPE is the 5K Family Fun Run organized by the Missio Community. The family-friendly event will start at the Gabriel Park soccer field and will include an arts and crafts activities corner, plus a 1K run for younger participants. Admission is \$35 for adults and includes a t-shirt. Joel To, one of the Missio Fun Run organizers, shared his optimism about this first-ever, community fun-run event, "We are so excited to be able to include this new family-friendly bonus event to the SW HOPE community fundraising efforts. We feel people of all ages will enjoy it!"

For more information about these events as well as the food and fundraising drive and how you can help, contact Ann Rogers-Williams, Neighborhood House Development Coordinator, at 503-246-1663 x2118 or awilliams@nhpdx.org, or go to www.nhpdx.org.

Cash and food donations can be made at any of the faith locations displaying a SW HOPE banner. A complete list of community partners and participating congregations can be found at www.swhope.org. Supporters can also make food and cash donations at Neighborhood House, located at 7780 SW Capitol Hwy., or online at www.swhope.org.

Not a Place but a Plan for Remaining Independent in Your Home



invites you an introductory talk on
The Village Movement in SW Portland

Saturday, March 12, 2016
10:00 am - 12:00 pm

St. Luke Lutheran Church
4595 SW California St, Portland

(The meeting will be held in the lower level off of the Vermont St. entrance)

Free of charge, no RSVP needed. Bring a neighbor!
live a fully engaged rich life while staying in your own home
belong to a caring community of support-not a real estate development
neighbor helping neighbor-being useful, making friends

River West Village is open to anyone 18+

It is a program of Villages NW, a 501c3 non-profit
For more information contact: info@riverwestvillage.org

Multnomah Village

The Village in the Heart of Portland

First Friday

March 4th 2016!

Eat~Open late~Shop

Childcare provided by Riversgate Church from 6-8pm
Childcare questions: 503-244-3224

Find us on
Facebook
facebook.com/multnomahvillage

multnomahvillage.org

ventureportland.org

PRINTING PROVIDED BY ACTION FAST PHOTO

The Studio Theatre Presents

Spotlight Parade

A tribute to the musical comedies of the 1930's.

Friday, March 21st 7:00pm
Saturday, March 22nd 7:00pm
Sunday, March 23rd 2:30pm

Entertainment for the Entire Family,
and it won't cost you a dime.
Gee, that's Swell!

★ Multnomah Arts Center ★
7688 SW Capitol Highway ★ Portland OR 97219
503.823.2787 ★ www.MultnomahArtsCenter.org

MULTNOMAH ARTS CENTER
7688 SW Capitol Hwy. Portland, OR 97219
MultnomahArtsCenter.org • 503.823.2787

PORTLAND PARKS & RECREATION
Healthy Parks, Healthy Portland

SW Urban Trails Walk: Saturday, March 12th, 9:00 am

The March walk will be led by Rick Kappler. This walk, which is 6.2 miles with 430 feet elevation gain, takes us into the far southern and western reaches of Portland and into Tigard. We will walk through five natural area parks and one developed park including West Portland Park, Dickenson Park,

Holly Farm Park, and PCC Sylvania campus, partially on Trail #7. Although we cross I-5 and highway 99 twice, the route is on quiet back streets with little traffic. Meet behind the bleachers, near the food carts, at Wilson High School (SW Sunset Blvd. and SW Capitol Highway)

and be ready to car pool at 9:00 am. We will car pool to Western Bike Works in the Winco-Petco parking lot in Tigard where we will start our walk. Bring a snack and water and dress for the weather. Well behaved dogs are allowed. They must be on leash. For health reasons, there is no smoking on

SW Trails walks. For more information or to volunteer to lead a future walk in your neighborhood, contact Sharon Fekety, fekety@hevanet.com.
Co-sponsored by SW Trails PDX and Hillsdale Neighborhood Association

Southwest Neighborhoods March 2016 Calendar

Sunday	Monday	Tuesday	Wednesday	Thursday	Friday	Saturday
28	29	1 6:00 PM SPNA Trans/Parking 6:45 PM Maplewood	2 6:00 PM Arnold Creek Board 6:30 PM Bridlemile Board 7:00 PM Hillsdale 7:00 PM South Portland 7:00 PM Collins View	3 9:00 AM SW Trails Work Party 7:00 PM SWNI Public Safety 7:00 PM SWNI Parks and Community Centers	4	5 9:00 AM Patty Lee Leadership Training 10:00 AM Friends of Tryon Creek Work Party
6	7 7:00 PM SWNI Communications	8 12:00 PM SP Riverbak 7:00 PM Markham 7:00 PM Multnomah 7:00 PM Arnold Creek	9 9:00 AM Friends of Marquam Nature Park Work Party 6:30 PM Bridlemile 7:00 PM Crestwood	10 6:00 PM Marshall Park 6:00 PM SPNA Comm/Equity/Parks 7:00 PM West Portland Park 7:00 PM South Burlingame	11	12 9:00 AM SW Urban Trails Walk 10:00 AM Friends of Tryon Creek Work Party
13 6:00 PM Tryon Creek Watershed Council 7:00 PM Ashcreek 7:00 PM Hayhurst	14 6:00 PM SPNA Land Use 7:15 PM SWNI Land Use	15 6:00 PM SWNI Finance 6:30 PM SW Hills Residential League 7:00 PM Friends of Gabriel Park 7:00 PM SWNI Executive	16 7:00 PM SWNI Schools	17	18	19 9:00 AM Friends of Terwilliger Work Party 9:00 AM South Portland Riverbank Work Party 10:00 AM Friends of Tryon Creek Work Party
20 9:45 AM Shomrei Teva at Neveh Shalom Work Party	21 7:00 PM SWNI Transportation	22 7:00 PM Far Southwest 7:00 PM Maplewood Board	23 7:00 PM SWNI Board	24	25	26 9:00 AM Friends of Woods Park Work Party 9:00 AM Friends of Marquam Nature Park Work Party 10:00 AM Friends of Tryon Creek Work Party
27	28 5:30 PM SWNI Equity and Inclusion	29 6:15 PM Westside Candidates forum	30	31 6:00 PM Landscaping with Native Plants	1	2 9:00 AM Friends of Marquam Nature Park Work Party 10:00 AM Friends of Tryon Creek Work Party