

**1.8**  
million  
affected people in  
the Gaza Strip

**3,993**  
Injured  
1,213 Children  
698 Women

**140,000**  
displaced (at least)  
seeking shelter in  
UNRWA schools

**1.2**  
million  
People with no or  
very limited access to  
water or sanitation  
services

**80%**  
receive electricity for  
only four hours a day

### Situation Overview

The killing of multiple members of the same families as a result of the targeting of homes became increasingly frequent in the past few days, with at least five families (36 individuals) almost completely erased during the previous reporting period alone. The Israeli military targeted and destroyed or severely damaged over 530 residential properties, including many multi-storey buildings, causing civilian casualties and displacing the survivors.

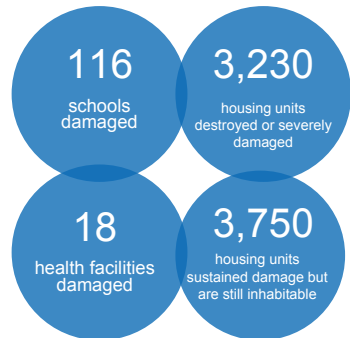
Intense overcrowding, compounded by the limited access of humanitarian staff to certain areas, is increasingly undermining the living conditions at many shelters and raising protection concerns. Water supply has been particularly challenging, with more than 117,000 IDPs in need of water for drinking and domestic use.

#### Humanitarian priorities

**Protection of civilians:** ensuring respect for International Humanitarian Law  
**New humanitarian pause:** to complete search and rescue operations, repair critical infrastructure, and reach isolated areas.

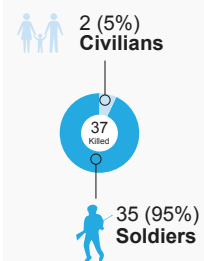
**Scale up response to IDPs:** by adding shelters and replenishing food, water, and NFI stocks.

### Damaged structures



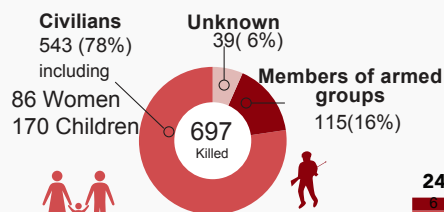
### Israeli Fatalities

#### Fatalities by status

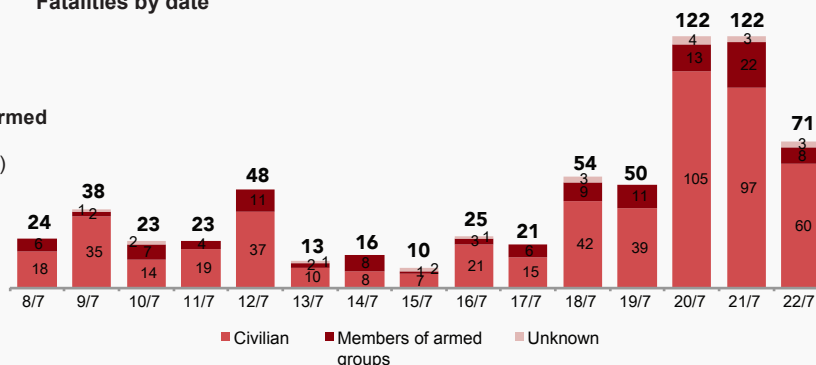


### Palestinian Casualties \*

#### Fatalities by status



#### Fatalities by date



### Needs, response and funding

#### Needs

#### Response

Category	Needs	Response
<b>Protection</b>	170,000 children require specialised support services. Approx. 100 unexploded bombs have been reported.	Psychosocial teams have reached 1,196 children, in addition to a free 24-hour Sawa helpline.
<b>Shelter and NFI</b>	135,000 individuals are in need of shelter and NFI assistance, including 2,655 families displaced and 3,175 families whose houses sustained damages but are still inhabitable.	83 UNRWA schools are serving as shelters for 117,000 individuals, also other 12 government schools have been used as shelters. 9,157 individuals have been provided with NFIs.
<b>Health</b>	Shifa hospital urgently needs neurosurgeons, anesthesiologists, plastic and general surgeons, and orthopedic specialists, as well as 20 ICU beds, a digital C-ARM machine for orthopedic surgeries, 3 operation tables and a lighting system for the 5 operation rooms.	WHO is coordinating with MoH and health sector partners on the most urgent needs for donations, informing donors and facilitating procurement and delivery to Gaza.
<b>WASH</b>	Repair of wells, sewage pumping station and water and sewage lines damaged. Emergency water tankering to over 117,000 IDPs is required.	UNRWA is providing water tankering to IDPs in UNRWA schools and delivered 40,000 tonnes of diesel to water and sewage pump stations. Oxfam GB is supplying water to IDPs in 18 schools.
<b>Food</b>	Over 135,000 IDPs are in need of emergency food assistance.	WFP, in cooperation with UNRWA, continues to provide daily emergency food rations to IDPs, and hospital patients and staff across the Gaza Strip.

### oPt Funding by sector

(in million US\$)

#### HCT will begin preparation of a flash appeal for Gaza

Projects targeting Gaza specifically in the 2014 Strategic Response Plan (SRP) are requesting \$221 million, of which 32 per cent (\$70 million) has been received. Nearly 90 per cent of 1.9 million vulnerable people targeted in the SRP are in Gaza. A further \$68 million is requested for projects targeting the Gaza Strip and the West Bank jointly.

Cluster	Required	Mobilized as of 23 July	Percentage
Education	6.7	2.2	32%
Food Security	183.7	60.5	28%
Health and Nutrition	9.9	1.2	9%
Protection	7.3	3.2	44%
Shelter and NFIs	3.5	0.3	12%
WASH	10.2	2.9	33%
<b>TOTAL</b>	<b>221.3</b>	<b>70.3</b>	<b>33%</b>