



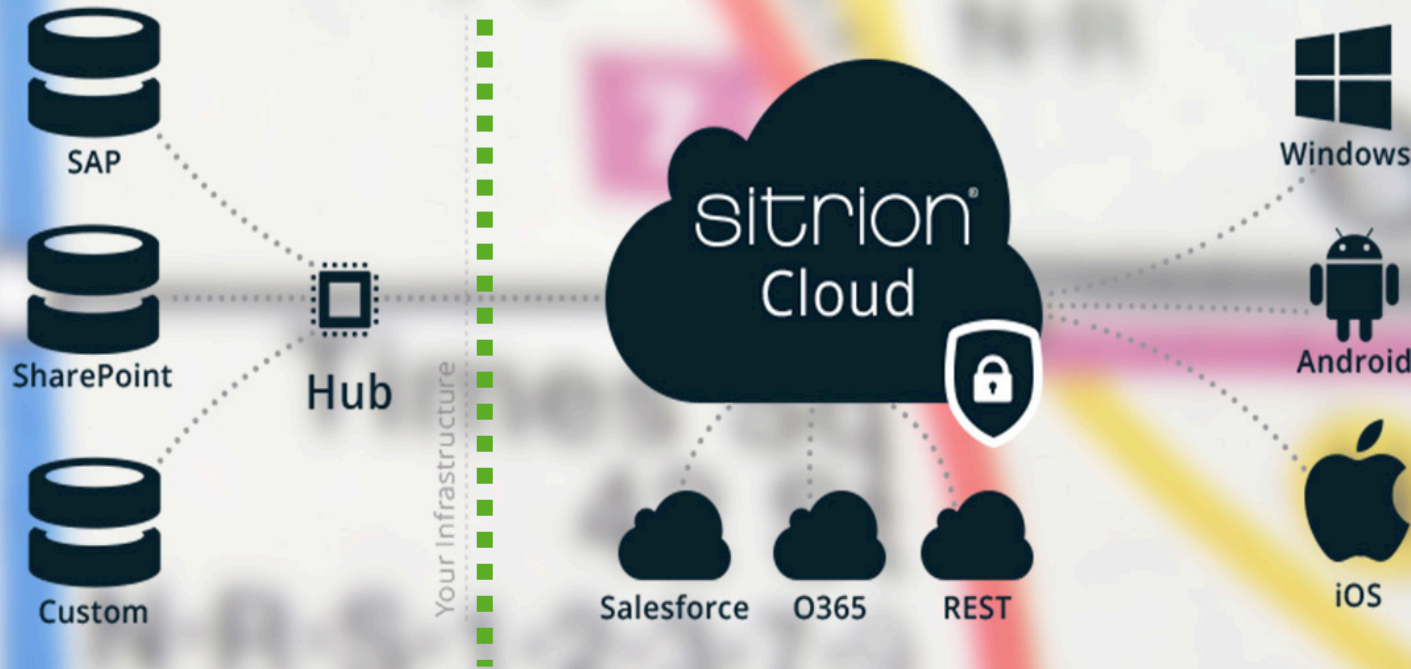
# Sitrion ONE



## Infrastructure & Security



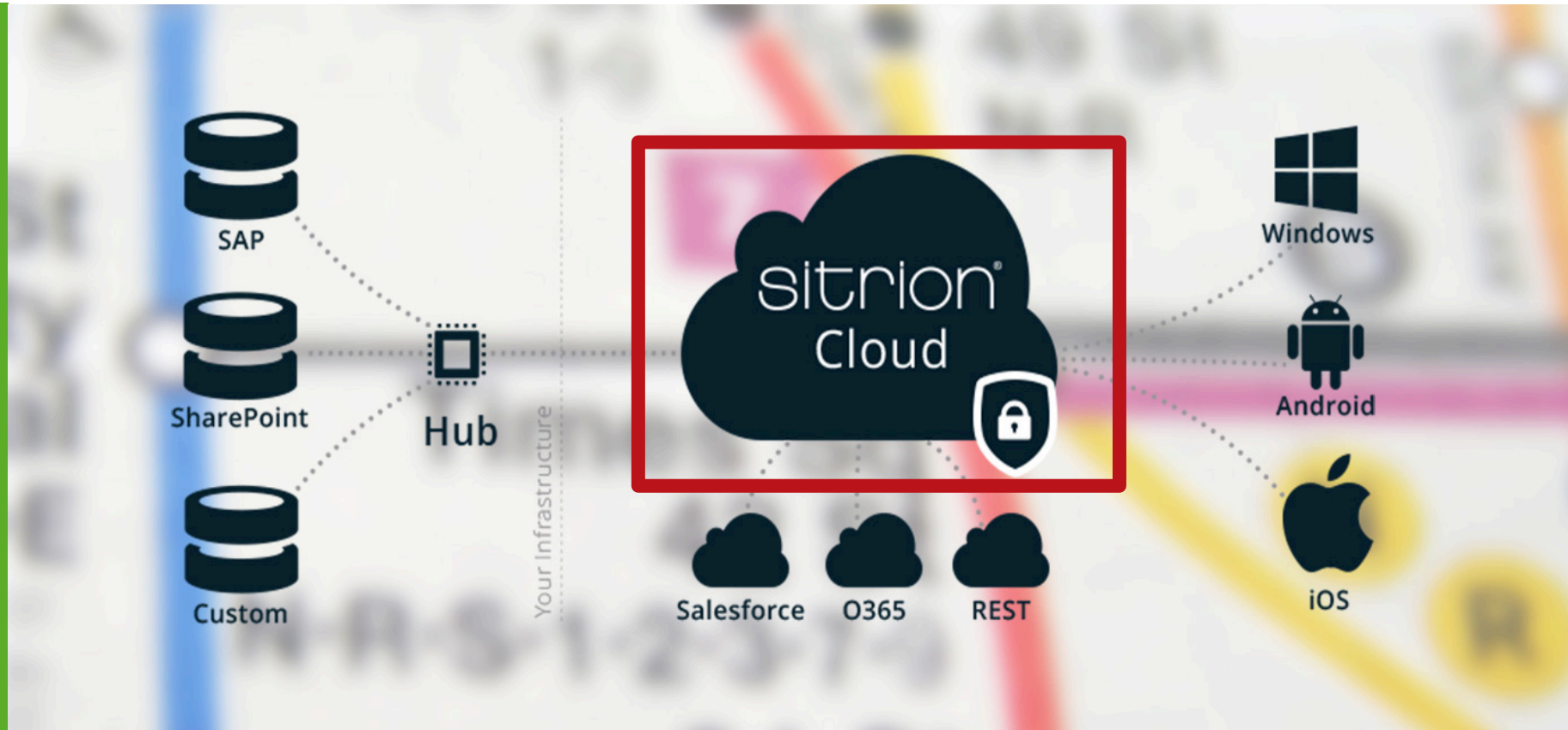
# Sitrion ONE Infrastructure (Overview)



- Hosted on Microsoft Azure
- Isolated Tenants for every Customer
- No data storage on mobile devices and the cloud (except Push-Content-Cache)
- Encryption of all communication and messages
- Real-Time access, no Offline storage

# Sitrion ONE Infrastructure (Hosting)

- No replication of backend data, no data storage (except Push-Content-Cache)
- Cache-Content of Push-Data (Cards) leverages Rijndael (AES 128 Bit) Encryption. Dynamically generated keys per tenant-> Sitrion doesn't know the keys and has no access to the customer tenant

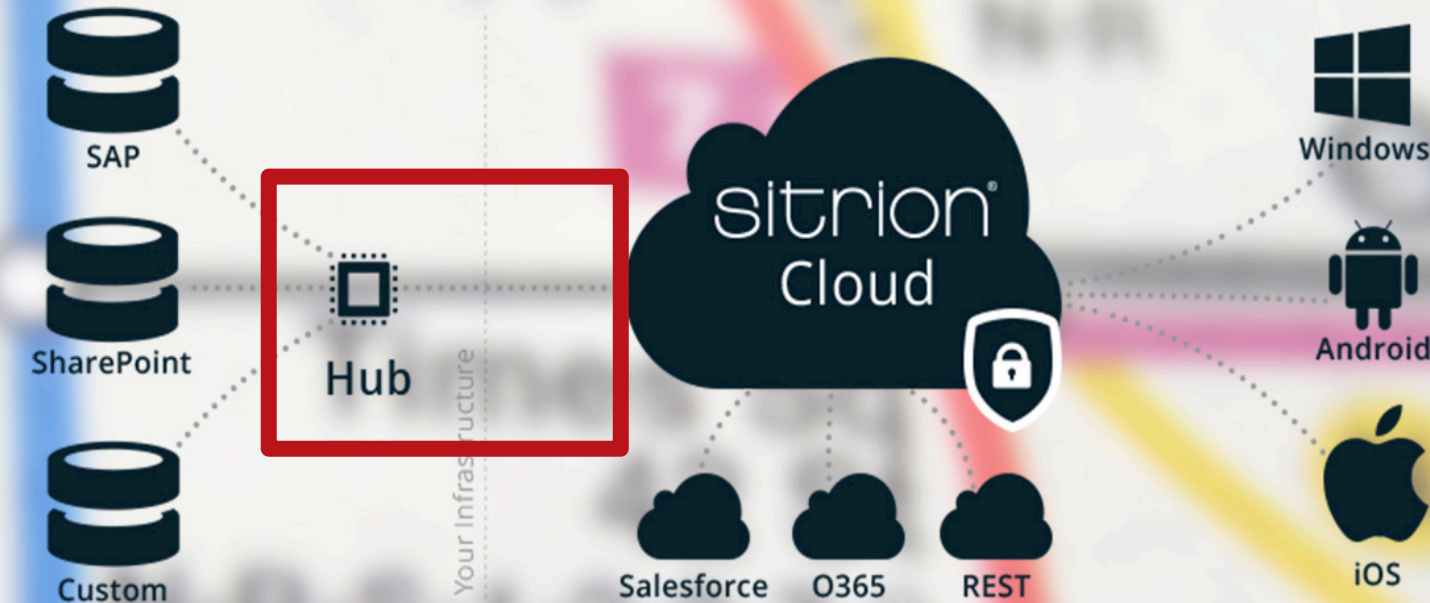


Microsoft Azure Certifications:

<https://azure.microsoft.com/en-us/support/trust-center/compliance/>

sitrion

# Sitrion ONE Infrastructure (Hub)



- The hub contains the connectors to the backend systems (SharePoint, SAP etc.)
- Connectivity from the hub to the customer tenant via Azure Service Bus (Outbound only TCP to dedicated Azure IP ranges)
- Encrypted communication between Hub and Cloud via Secure Relay Access Token



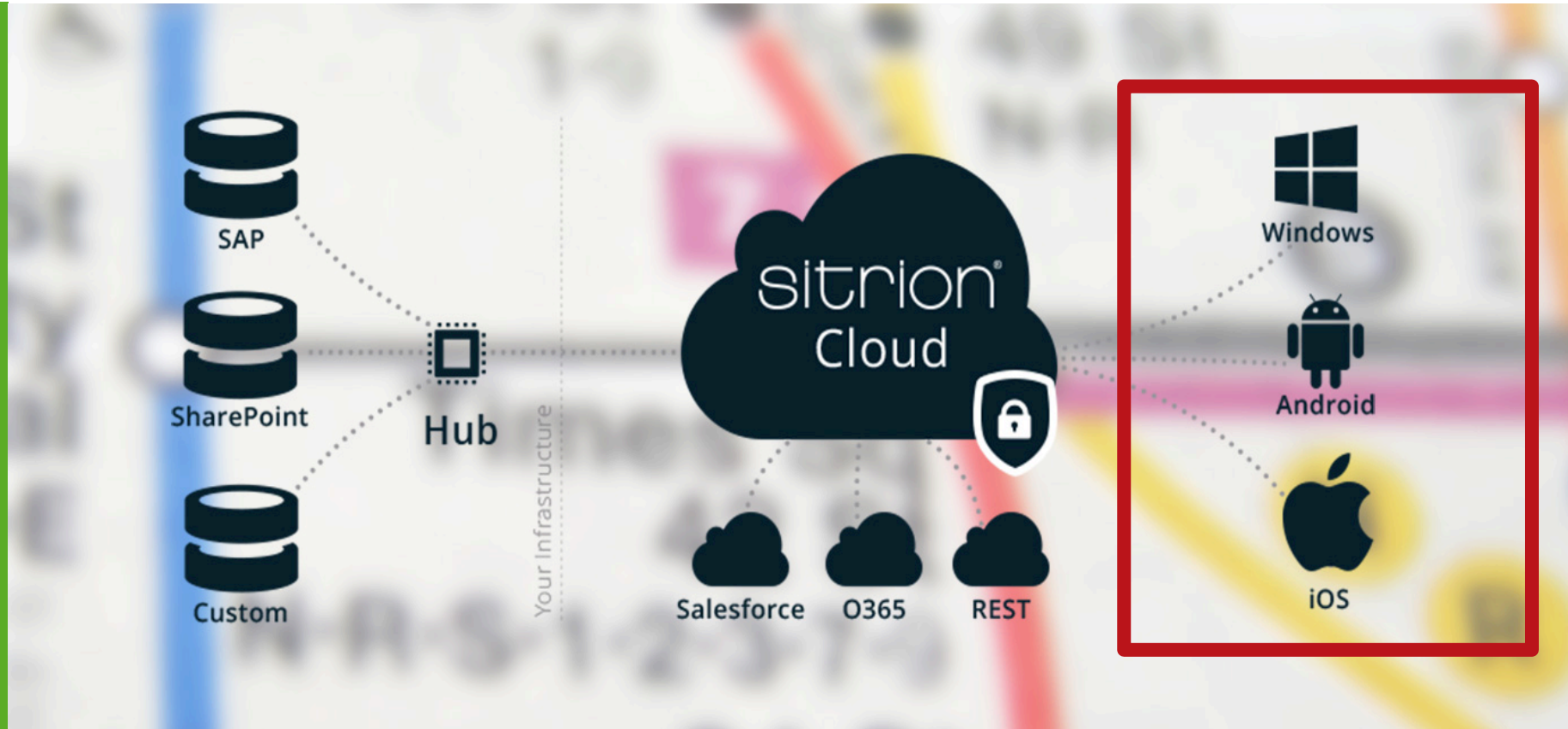
Microsoft Azure Service Bus:

<https://azure.microsoft.com/en-us/services/service-bus/>

sitrion

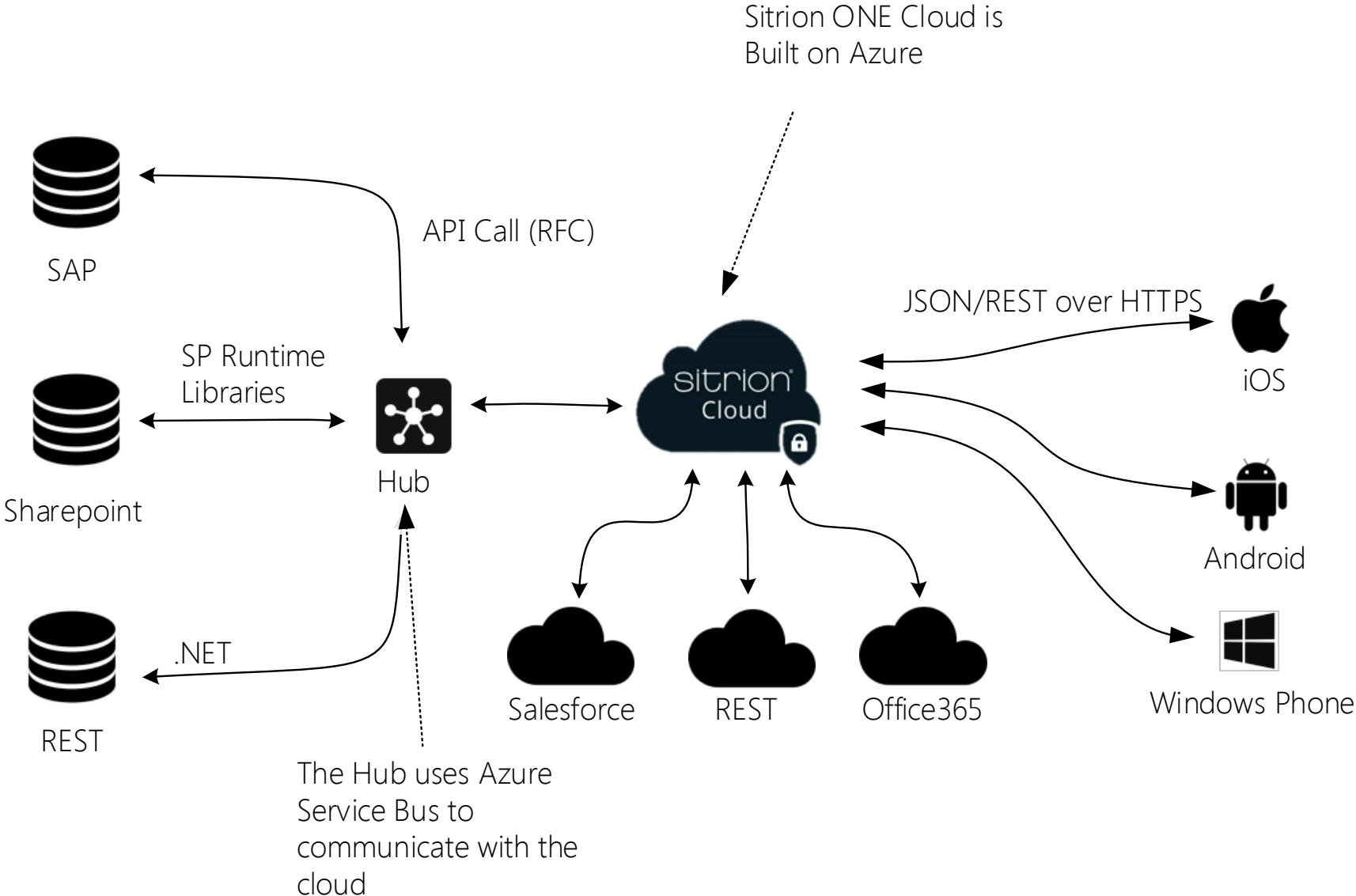
# Sitrion ONE Infrastructure (Device)

- No data storage on the mobile device
- No offline access
- Encrypted communication with the customer tenant via SSL (TLS 1.2, AES 256 CBC, SHA1 & ECDHE RSA)
- Authentication of users leveraging ADFS or Generic Sitrion ONE-Login



# Backend Integration

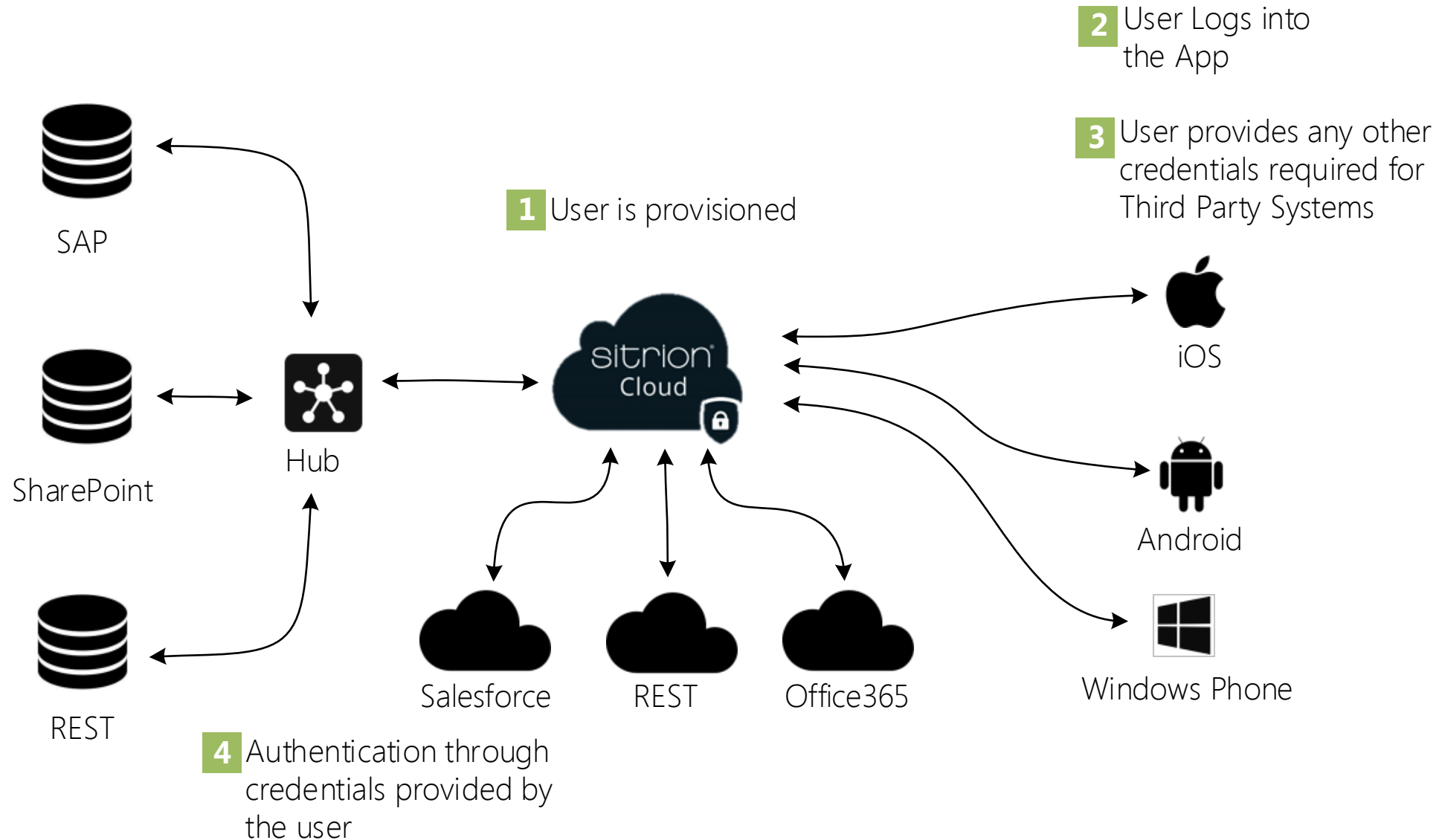
# Integration Details



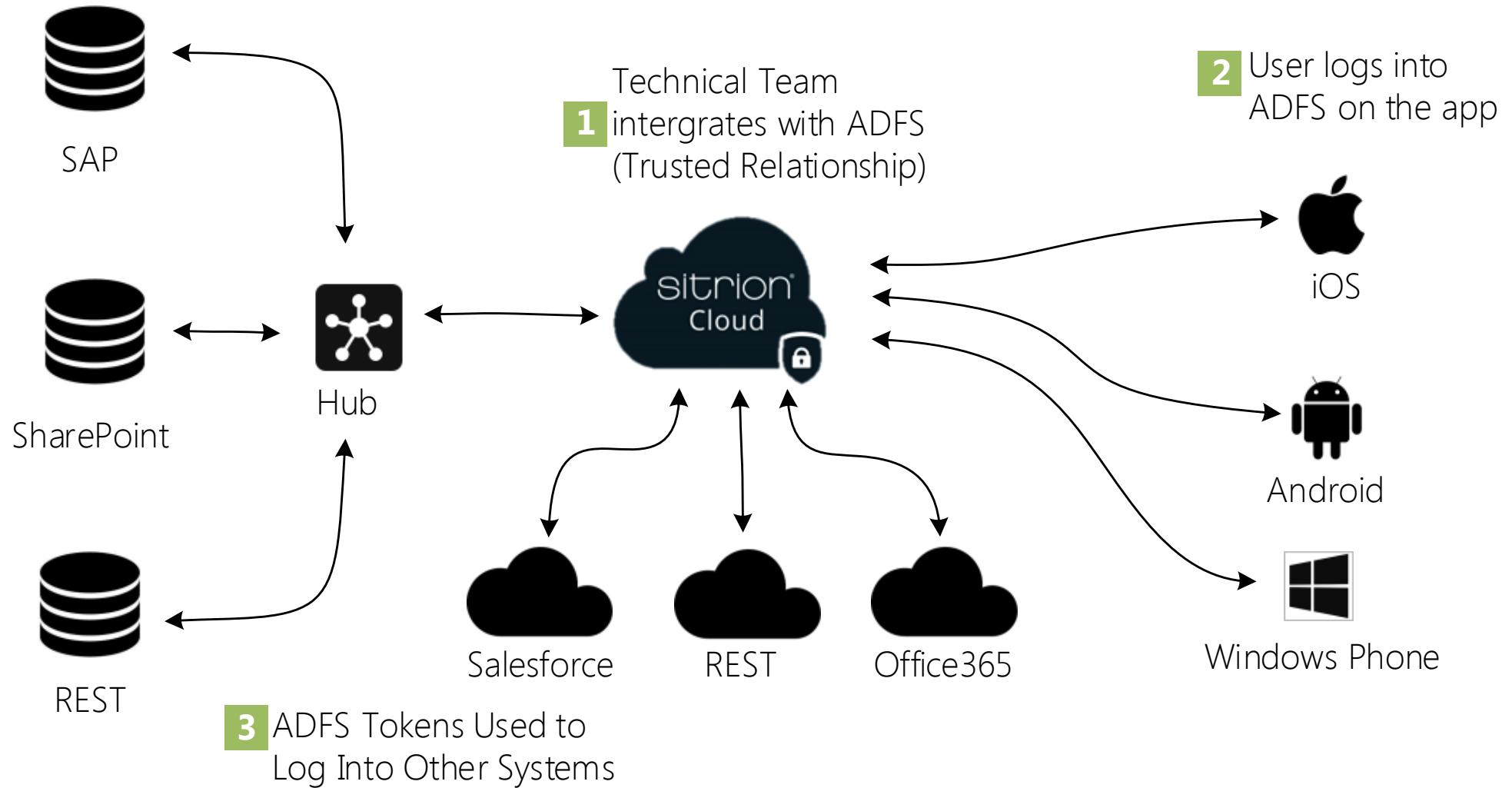
Authentication



# Option 1: Sitrion ONE-Authentication



# Option 2: Microsoft ADFS-Authentication



(depending on the backend configuration)

# Technical Resources

General Technical Overview

<http://devcentral.sitrion.com>

Security/Architecture

<http://www.sitrion.com/one/developer/documentation/security-guide>

<http://www.sitrion.com/one/developer/documentation/integration-guide>

Development

<http://www.sitrion.com/one/developer/documentation/getting-started/build-your-first-app>

<http://www.sitrion.com/one/developer/documentation/development-guide>

Application Owners

<http://www.sitrion.com/one/developer/documentation/integration-guide>