



MySQL ENTERPRISE EDITION

THE WORLD'S MOST POPULAR
OPEN SOURCE DATABASE

HIGHLIGHTS

- MySQL Database
- MySQL Enterprise Backup
- MySQL Enterprise High Availability
- MySQL Enterprise Scalability
- MySQL Enterprise Authentication
- MySQL Enterprise Encryption
- MySQL Enterprise Firewall
- MySQL Enterprise Audit
- MySQL Enterprise Monitor
- Enterprise Manager for MySQL
- MySQL Query Analyzer
- 225+ MySQL Advisors
- 600+ Monitored Variables
- 60+ Performance Graphs
- MySQL Workbench
- Oracle Premier Support

"With the MySQL Query Analyzer, we were able to identify and analyze problematic SQL code, and triple our database performance. More importantly, we were able to accomplish this in three days, rather than taking weeks."

—Keith Souhrada,
Software Development Engineer,
Big Fish Games

MySQL Enterprise Edition includes the most comprehensive set of advanced features, management tools and technical support to achieve the highest levels of MySQL scalability, security, reliability, and uptime.

MySQL Enterprise Edition reduces the risk, cost, and complexity in developing, deploying, and managing business-critical MySQL applications. Only MySQL Enterprise Edition enables you to:

- **Achieve database high availability** using certified and supported high availability solutions
- **Meet exponential growth** in users and data with MySQL Enterprise Scalability
- **Reduce risk of data loss** with MySQL Enterprise Backup for hot backup and recovery
- **Leverage existing security infrastructures** with MySQL Enterprise Authentication
- **Protect sensitive data** using encryption, key generation, and digital signatures.
- **Block database attacks** such as an SQL Injection with MySQL Enterprise Firewall
- **Implement policy-based auditing compliance** to existing MySQL applications
- **Improve database performance and availability** with MySQL Enterprise Monitor
- **Pinpoint SQL code that is impacting database performance** with MySQL Query Analyzer
- **Implement MySQL best practices** using more than 225 MySQL Advisors
- **Visually design, develop, administer and migrate databases**, with MySQL Workbench
- **Migrate databases to MySQL** using the MySQL Workbench Migration Wizard

MySQL Database

MySQL is the world's most popular open source database for cost-effectively delivering reliable, high-performance and scalable e-commerce, online transaction processing, and embedded database applications. It is an integrated, transaction safe, ACID-compliant database with full commit, rollback, crash recovery, and row-level locking capabilities. MySQL delivers the ease of use, scalability, and high performance, as well as a full suite of database drivers and visual tools to help developers and DBAs build and manage their MySQL applications. The MySQL Database provides the following features:

- **High Performance & Scalability** to meet the demands of exponentially growing data loads and users.
- **Self-healing Replication Clusters** to improve scalability, performance and availability.
- **Online Schema Changes** to meet changing business requirements.
- **Performance Schema** for monitoring user & application level performance and resource consumption.
- **SQL & NoSQL Access** for performing complex queries and simple, fast Key Value operations.
- **Platform Independence** giving you flexibility to develop and deploy on multiple operating systems.
- **Big Data Interoperability** using MySQL as the operational data store for Hadoop and Cassandra.

MySQL Enterprise Backup

MySQL Enterprise Backup performs online, non-blocking backups of your MySQL databases. Perform full, incremental and partial backups for all InnoDB data while MySQL is fully available for transactional operations. All backup operations are executed in parallel for quick results and also support compression options that reduce the size of backup images by 90%. Recovery options include backward compatible full recovery, precise one-click, point-in-time recovery and partial recovery for restoring a specific set of objects.

MySQL Enterprise High Availability

MySQL Enterprise High Availability enables you to meet the availability requirements of even the most demanding, mission-critical applications. MySQL provides you with certified and supported solutions, including MySQL Replication, MySQL Fabric, MySQL Router, Oracle VM Templates for MySQL Enterprise Edition, Oracle Linux with DRBD, Oracle Clusterware, Oracle Solaris Clustering and Windows Failover Clustering for MySQL Enterprise Edition.

MySQL Enterprise Scalability

MySQL Enterprise Scalability enables you to meet the sustained performance and scalability requirements of ever increasing user, query and data loads. MySQL Thread Pool provides an efficient thread-handling model, designed to reduce overhead in managing client connections and statement execution threads.

MySQL Enterprise Authentication

MySQL Enterprise Authentication provides ready to use external authentication modules to easily integrate with existing security infrastructures including Linux Pluggable Authentication Modules (PAM) and Windows Active Directory. MySQL Enterprise Authentication enables organizations to implement a Single Sign On mechanism and leverage existing security rules and process from centralized directories.

MySQL Enterprise Encryption

To protect sensitive data throughout its lifecycle, MySQL Enterprise Encryption provides industry standard functionality for asymmetric encryption (Public Key Cryptography). MySQL Enterprise Encryption provides encryption, key generation, digital signatures and other cryptographic features to help organizations protect confidential data and comply with regulatory requirements such as HIPAA, Sarbanes-Oxley, and the PCI Data Security Standard.

MySQL Enterprise Firewall

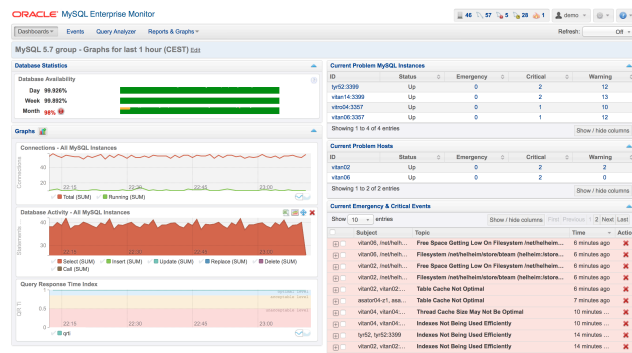
MySQL Enterprise Firewall blocks SQL Injection attacks that can result in loss of valuable personal and financial data. Whitelist creation, real-time threat monitoring, SQL statement blocking and alerting enable DBAs protect data assets. Acting as an intrusion detection system, MySQL Enterprise Firewall notifies administrators to SQL statement activity that does not match an approved whitelist.

MySQL Enterprise Audit

MySQL Enterprise Audit enables you to quickly and seamlessly add policy-based auditing compliance to existing applications. You can dynamically enable user level activity logging, implement activity-based policies, manage audit log files and integrate MySQL auditing with Oracle and third-party solutions.

MySQL Enterprise Monitor

The MySQL Enterprise Monitor and MySQL Query Analyzer enable you to improve the performance and availability of your MySQL instances, the applications that use them, and the supporting infrastructure. The MySQL Enterprise monitor continuously monitors MySQL queries and performance related server metrics and alerts developers and DBAs on significant deviations from the baseline performance trends. Best practice Advisors recommend changes to configuration and variable settings to improve performance. Harnessing the power of trend analysis, MySQL Enterprise Monitor can alert you to problems before they become critical and accurately predict future capacity requirements.

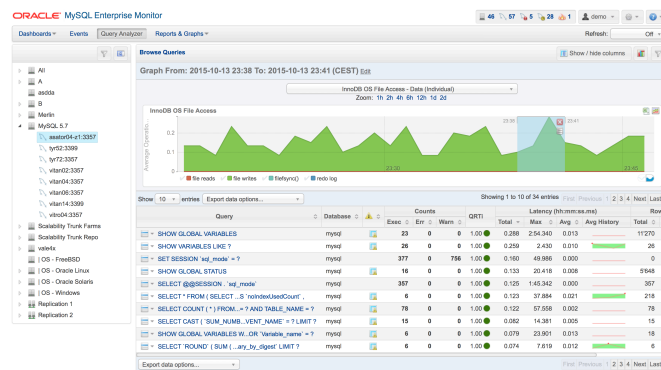


MySQL Enterprise Monitor provides real-time visibility into the performance and availability of MySQL servers.

MySQL Query Analyzer

The MySQL Query Analyzer provides a consolidated view of query activities and execution details enabling developers and DBAs to quickly find performance tuning opportunities. MySQL Query Analyzer enables developers to:

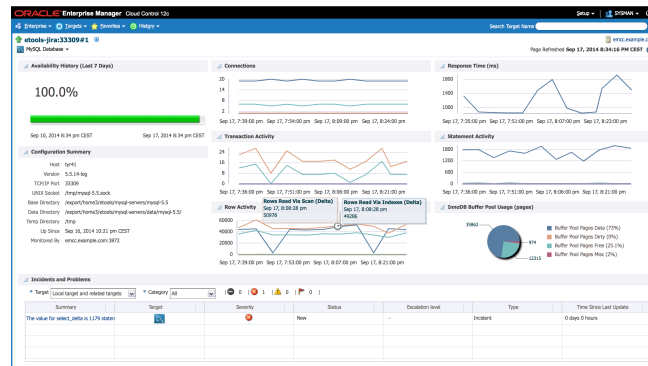
- **Quickly identify the most problematic queries** that impact the performance of their applications
- **Filter for specific query problems** like full table scans and bad indexes using advanced search
- **Visually correlate query executions with MySQL server activity** during a selected time period
- **Drill Down into detailed query statistics** to quickly determine why the query is problematic



The MySQL Query Analyzer allows developers to highlight a time slice on a graph to quickly expensive queries.

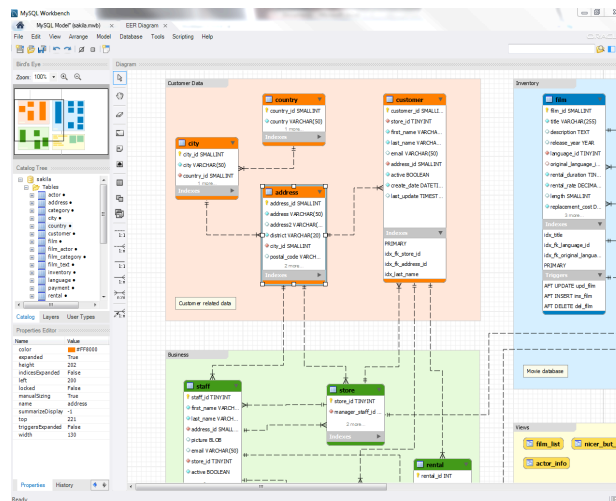
Oracle Enterprise Manager for MySQL

The Oracle Enterprise Manager for MySQL provides Oracle developers and DBAs with real-time monitoring and delivers comprehensive performance, availability and configuration information for your MySQL databases. Enterprise Manager collects more than 500 metrics covering various MySQL components. Custom critical and warning thresholds can then be set for each of the collected metrics. Plus, DBAs can track configuration details over time to easily keep track of configuration changes.



MySQL Workbench

MySQL Workbench is a unified visual development and administration platform that includes advanced tools for database modeling and design, query development and testing, server configuration and monitoring, user and security administration, backup and recovery automation, audit data inspection, and wizard-driven database migrations.



MySQL Workbench provides data modeling, SQL development, administration, and migration tools.

Oracle Premier Support

Oracle offers 24x7, global support for MySQL. The MySQL Support team is composed of seasoned MySQL developers, who are database experts and understand the issues and challenges you face.

Oracle Premier Support for MySQL includes the following features:

- 24 x 7 production support
- Unlimited support incidents
- Knowledge Base
- Maintenance releases, bug fixes, patches and updates
- MySQL consultative support

MySQL Editions

MySQL is available in 4 commercial editions:

- MySQL Enterprise Edition
- MySQL Standard Edition
- MySQL Cluster Carrier Grade Edition
- MySQL Classic Edition (only available for ISVs/OEMs)

About MySQL

MySQL is the world's most popular open source database software. Many of the world's largest and fastest-growing organizations use MySQL to save time and money powering their high-volume Websites, business-critical systems, and packaged software.

Partial List of MySQL Customers		
Web/End-User Customers	Embedded/ISV Customers	Telecom Customers
<ul style="list-style-type: none"> • Amazon.com • Bank of America • BBC News • Disney • Facebook • Google • Lufthansa • NASA • Priceline.com • Puma • Shopatron • Twitter • Walmart • YouTube • Zappos 	<ul style="list-style-type: none"> • Adobe • Airbus • CA NetQoS • Dell Kace • EMC • F-Secure • F5 Networks • Hewlett Packard • Intel • McAfee • Motorola • Sage Group • SAP BusinessObjects • SonicWALL • Symantec 	<ul style="list-style-type: none"> • Alcatel-Lucent • AT&T Wireless • BT Plusnet • Cable & Wireless • Cell C • Cisco • Comcast • Ericsson • France Telecom • Italtel • Oi Telecom • Motorola • Siemens • Telenor • Teligent

Contact Us

For more information about MySQL visit mysql.com. To contact MySQL online or via telephone, visit mysql.com/contact.



Copyright © 2015, Oracle and/or its affiliates. All rights reserved.

This document is provided for information purposes only and the contents hereof are subject to change without notice. This document is not warranted to be error-free, nor subject to any other warranties or conditions, whether expressed orally or implied in law, including implied warranties and conditions of merchantability or fitness for a particular purpose. We specifically disclaim any liability with respect to this document and no contractual obligations are formed either directly or indirectly by this document. This document may not be reproduced or transmitted in any form or by any means, electronic or mechanical, for any purpose, without our prior written permission.

Oracle and Java are registered trademarks of Oracle and/or its affiliates. Other names may be trademarks of their respective owners.