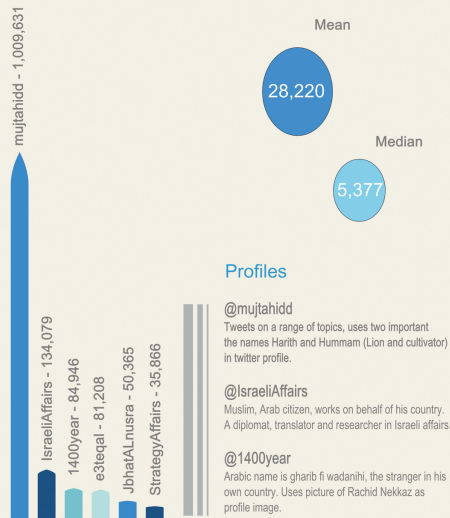


66 Important Jihadi on Twitter

Locating important Jihadi

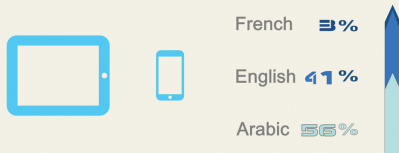
A recent posting on *Shumukh al-Islam* identified "The most important jihadi and support sites for jihad and the mujahideen on Twitter"

Followers



Language used

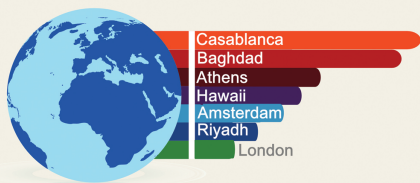
The majority of the users set their Twitter language to Arabic. This data was ascertained from the Twitter API.



It should be noted some users will tweet in more than one language - this shows which language they set up their twitter account with.

Location of timezone

When creating a Twitter account users set a timezone, used to determine the time of tweets in their timeline.



To ease this process users are given the option of entering a nearby city to set the timezone.

Year Jihadi accounts were created

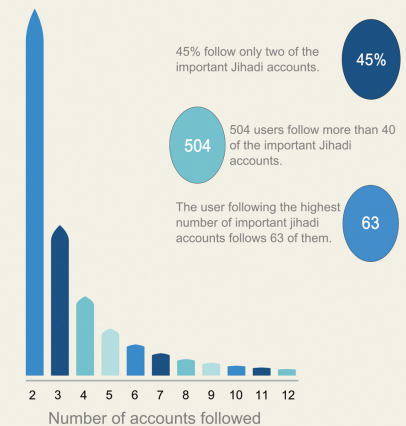
The role of the 'media mujahid' has been promoted since the death of Osama bin Laden in May 2011.



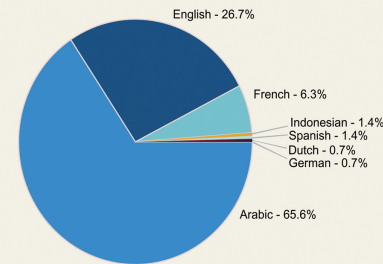
During 2011 members of Jihadist forums, including al-Ansar, issued media strategies and advisory to fellow members. However, as the data shows it took a while for Jihadi Twitter activism to gather pace as the Syrian conflict turned violent.

Followers of important Jihadi

129,905 users follow more than one 'important Jihadi' account
79% of those users follow between two and five of the important Jihadi accounts.

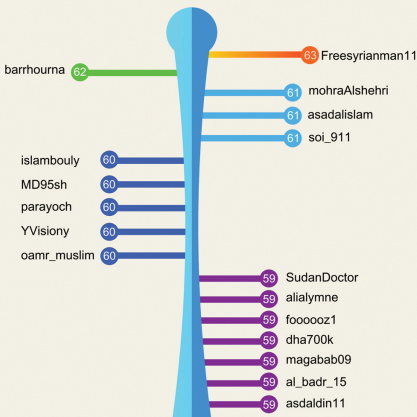


Language used by followers of important Jihadi



Based on the language set on Twitter by the 504 users which follow 40 or more important Jihadi accounts.

Most frequent followers of important Jihadi

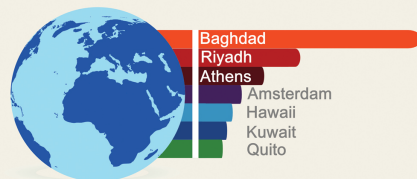


Most frequent followers is calculated using the followers of 65 important jihadi. Mujtahidd was excluded as this account alone had more followers than the other 65 Jihadi combined.

Note:

The inclusion of users here is on the basis of appearing in the recent posting "The most important jihadi and support sites for jihad and the mujahideen on Twitter" on *Shumukh al-Islam*. These users are being promoted as important jihadi or supporters, whether or not they would self-define that way. Equally, following important jihadi should not betaken by itself as an indication of allegiance.

Location of timezone for frequent followers of important Jihadi

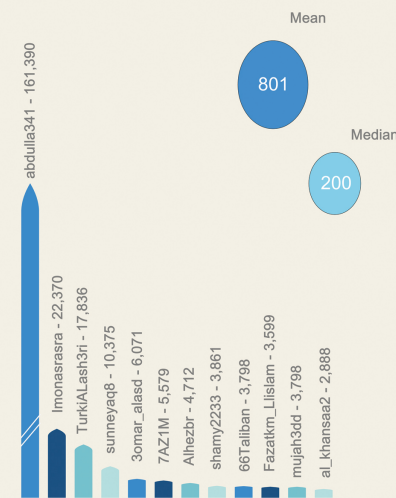


Based on the location used to set timezone for the 504 users that follow more than 40 important jihadi on Twitter

Frequent followers of important Jihadi with the greatest followers

These are users with the greatest number of followers from the group who follow 40 or more important Jihadi.

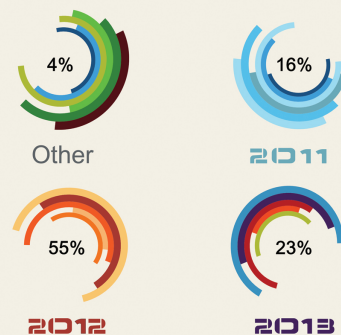
Followers



The mean (801) and Median (200) number of followers is lower amongst this group of users than for the 66 important jihadi accounts. This indicates this group of users are individual users or those with lower appeal, than the 66 important jihadi.

Year frequent followers of important Jihadi created accounts

While 2012 was a key year for the creation of accounts by the 'media mujahid' and the majority of the frequent follower group were also created in 2012, nearly a quarter have been created more recently.



Infographic drawn by Ali Fisher, including analysis by Nico Prucha

This work is licensed under a Creative Commons Attribution-NonCommercial-ShareAlike 3.0 Unported License

