

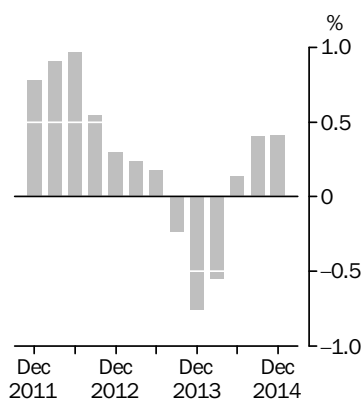
BUSINESS INDICATORS

AUSTRALIA

EMBARGO: 11.30AM (CANBERRA TIME) MON 2 MAR 2015

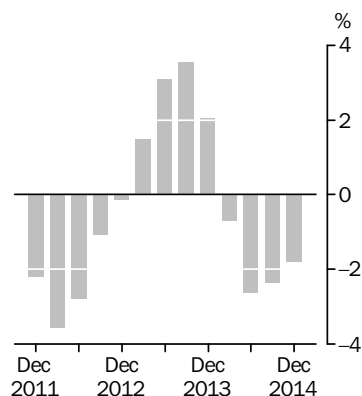
Inventories (volume terms)

Trend estimates



Company gross operating profits

Trend estimates



INQUIRIES

Inquiries about these and related statistics, contact the National Information and Referral Service on 1300 135 070. The ABS Privacy Policy outlines how the ABS will handle any personal information that you provide to us.

KEY FIGURES

	Sep Qtr 14 to Dec Qtr 14 %	Dec Qtr 13 to Dec Qtr 14 %
Sales of goods and services (Chain volume measures)		
Manufacturing		
Trend	-0.3	-2.1
Seasonally Adjusted	0.0	-2.5
Wholesale trade		
Trend	0.3	1.1
Seasonally Adjusted	0.3	0.7
Inventories (Chain volume measures)		
Trend	0.4	0.4
Seasonally Adjusted	-0.8	-0.5
Company gross operating profits		
Trend	-1.8	-7.3
Seasonally Adjusted	-0.2	-5.9
Wages and salaries		
Seasonally Adjusted	0.3	1.8

KEY POINTS

CHAIN VOLUME ESTIMATES

- The trend estimate for inventories rose 0.4% in the December quarter 2014. The seasonally adjusted estimate fell 0.8% this quarter.
- The trend estimate for Manufacturing sales of goods and services fell 0.3% this quarter. The seasonally adjusted estimate was relatively unchanged.
- The trend estimate for Wholesale trade sales of goods and services rose 0.3% this quarter. The seasonally adjusted estimate rose 0.3%.

CURRENT PRICE ESTIMATES

- The seasonally adjusted estimate for company gross operating profits fell 0.2% in the December quarter 2014.
- The seasonally adjusted estimate for wages and salaries rose 0.3% in the December quarter 2014.

NOTES

FORTHCOMING ISSUES

<i>ISSUE (Quarter)</i>	<i>RELEASE DATE</i>
March 2015	1 June 2015
June 2015	31 August 2015
September 2015	30 November 2015
December 2015	29 February 2016

COMPARISON BETWEEN COMPANY GROSS OPERATING PROFITS AND GROSS OPERATING SURPLUS

Valuation changes have had an impact on the value of inventories held by Australian businesses this quarter. An inventories valuation adjustment (IVA) is applied in the calculation of the gross operating surplus of private non-financial corporations (GOS) estimate in the Australian National Accounts. The IVA for the December quarter 2014 is -\$602m which is \$148m higher than the September quarter 2014 IVA of -\$750m.

No adjustment is made to the company gross operating profits (CGOP) estimate in this publication and, as a result, users should exercise caution when comparing CGOP and GOS. It should be noted that there are other differences between the two series. In particular, changes are made to GOS when annual benchmarks are applied and slightly different seasonal factors apply to the two series. Given this, while CGOP movements are an appropriate indicator for GOS, the two series will not have equivalent seasonally adjusted movements from quarter to quarter.

ABBREVIATIONS

ABN	Australian Business Number
ABS	Australian Bureau of Statistics
ANZSIC	Australian and New Zealand Standard Industrial Classification
CGOP	company gross operating profits
GOS	gross operating surplus
PAYGW	pay-as-you-go withholding
QBIS	Quarterly Business Indicators Survey
SISCA	Standard Institutional Sector Classification of Australia
TAU	type of activity unit

David Kalisch
Australian Statistician

CONTENTS

page

COMMENTARY

Analysis by Industry	5
----------------------	---

TABLES

INVENTORIES

1 Chain volume measures	23
2 Chain volume measures, Percentage change from previous quarter	24
3 Current prices	25

SALES OF GOODS AND SERVICES

4 Chain volume measures	26
5 Chain volume measures, Percentage change from previous quarter	28
6 Current prices	30
7 By state, Current prices	32
8 By state, Current prices, Percentage change from the previous quarter	33

COMPANY PROFITS BEFORE INCOME TAX

9 Current prices	34
10 Current prices, Percentage change from previous quarter	36

COMPANY GROSS OPERATING PROFITS

11 Current prices	38
12 Current prices, Percentage change from previous quarter	40

UNINCORPORATED GROSS OPERATING PROFITS

13 Current prices	42
14 Current prices, Percentage change from previous quarter	44

BUSINESS GROSS OPERATING PROFITS

15 Current prices	46
16 Current prices, Percentage change from previous quarter	48

WAGES AND SALARIES

17 Current prices	50
18 Current prices, Percentage change from previous quarter	52
19 By state, Current prices	54
20 By state, Current prices, Percentage change from the previous quarter	55

SELECTED OPERATING RATIOS

21 Sales of goods and services/Wages and salaries, Current prices, Original	56
22 Business gross operating profits/Sales of goods and services, Current prices, Original	57
23 Inventories/Sales of goods and services, Current prices, Original	58

CONTENTS *continued*

page

ADDITIONAL INFORMATION

What if...? Revisions to trend estimates 59
Explanatory Notes 60
Technical Notes 66

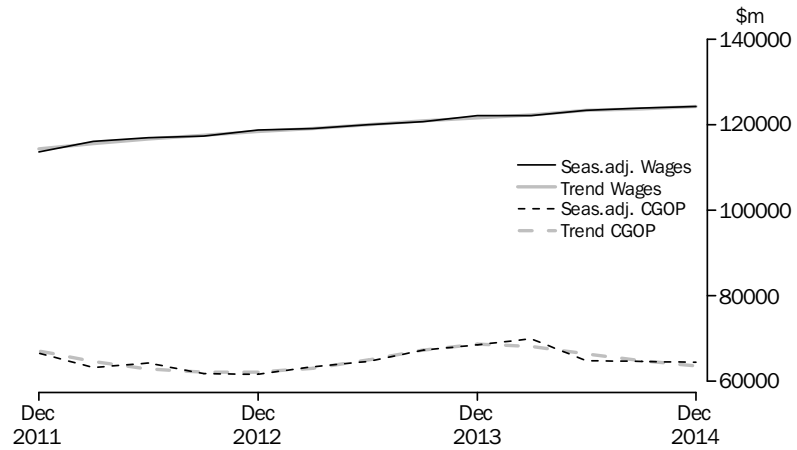
ANALYSIS BY INDUSTRY

FEATURED SERIES

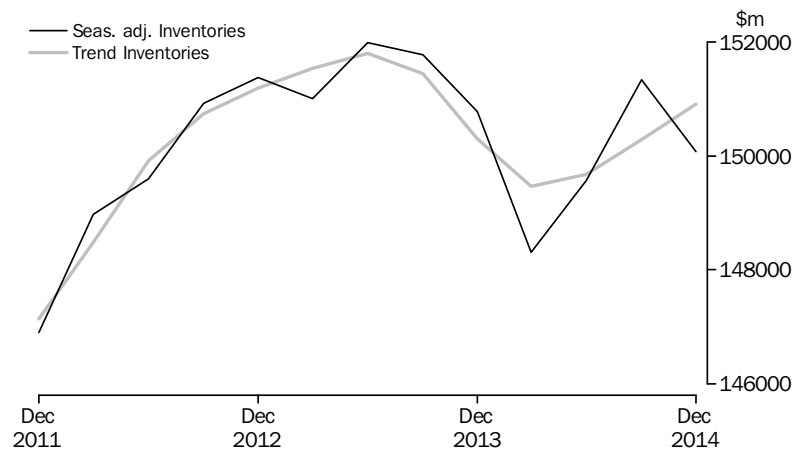
The following graphs and commentary refer to seasonally adjusted and trend estimates for sales of goods and services and inventories in volume terms, and wages and salaries and company gross operating profits in current price terms.

TOTAL ALL INDUSTRIES

In current prices, the trend estimate for company gross operating profits fell 1.8% this quarter. The seasonally adjusted estimate fell 0.2%. In current price terms, the trend estimate for wages and salaries rose 0.4%. The seasonally adjusted estimate rose 0.3%.



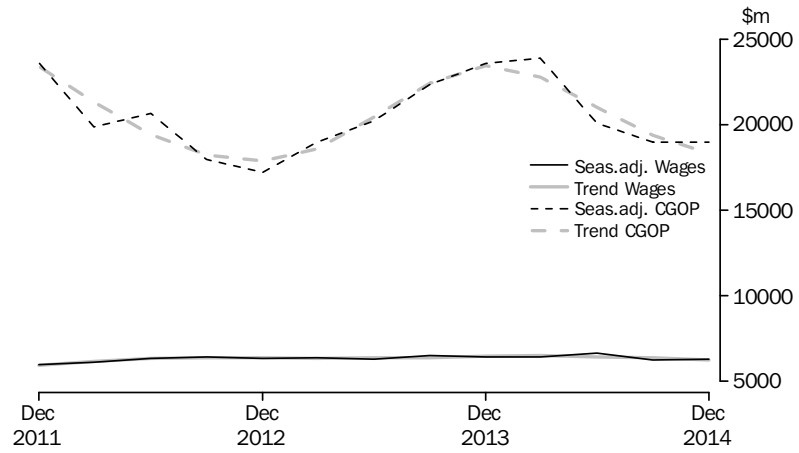
In volume terms, the trend estimate for total inventories rose 0.4% this quarter. The seasonally adjusted estimate fell 0.8%.



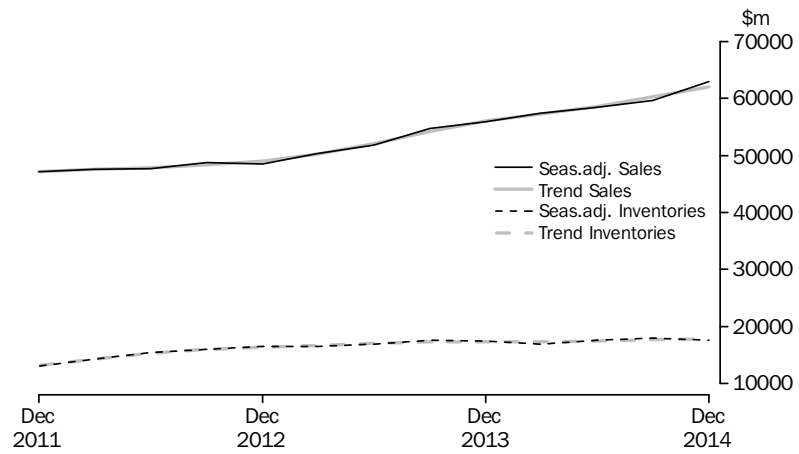
ANALYSIS BY INDUSTRY *continued*

MINING

In current prices, the trend estimate for company gross operating profits fell 5.5% this quarter. The seasonally adjusted estimate rose 0.1%. In current price terms, the trend estimate for wages and salaries fell 1.6% this quarter. The seasonally adjusted estimate rose 0.9%.



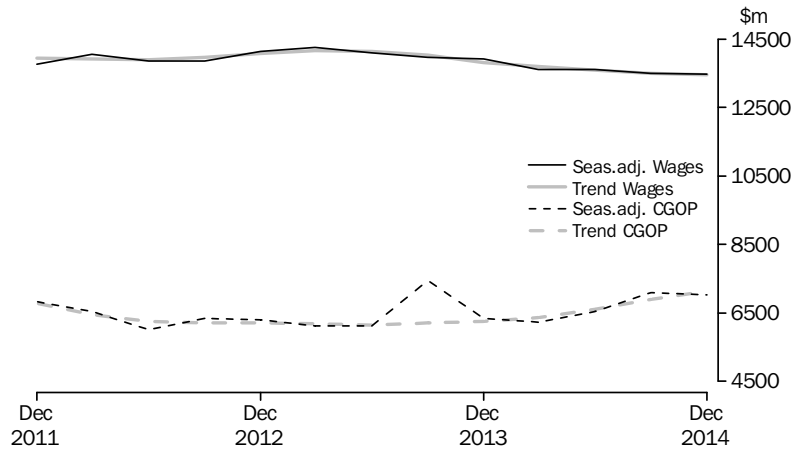
In volume terms, the trend estimate for sales of goods and services rose 2.9% this quarter. The seasonally adjusted estimate rose 5.6%. In volume terms, the trend estimate for inventories rose 1.0% this quarter. The seasonally adjusted estimate fell 2.7%.



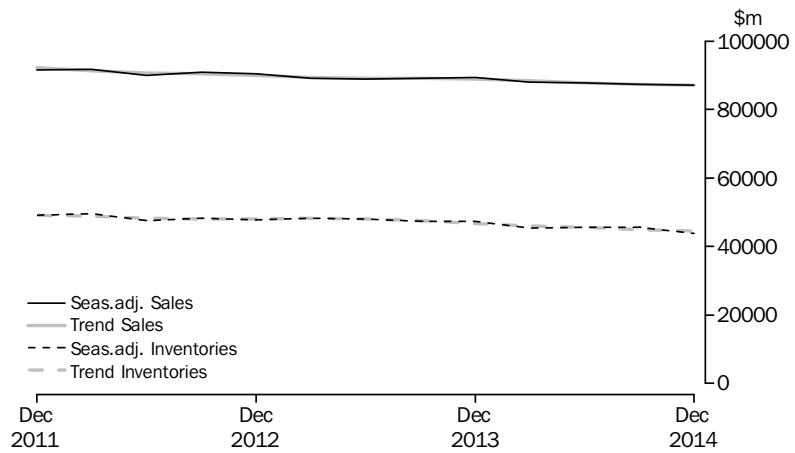
ANALYSIS BY INDUSTRY *continued*

MANUFACTURING

In current prices, the trend estimate for company gross operating profits rose 3.5% this quarter. The seasonally adjusted estimate fell 1.1%. In current price terms, the trend estimate for wages and salaries fell 0.3% this quarter. The seasonally adjusted estimate fell 0.2%.



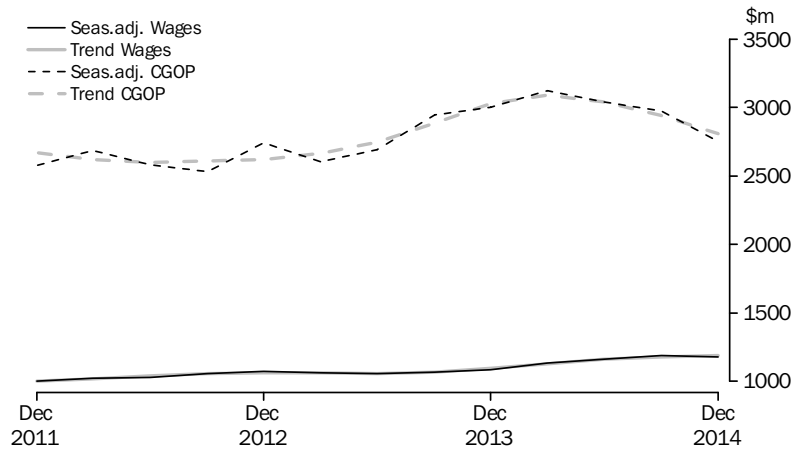
In volume terms, the trend estimate for sales of goods and services fell 0.3% this quarter. The seasonally adjusted estimate remained relatively unchanged. In volume terms, the trend estimate for inventories fell 1.2% this quarter. The seasonally adjusted estimate fell 3.5%.



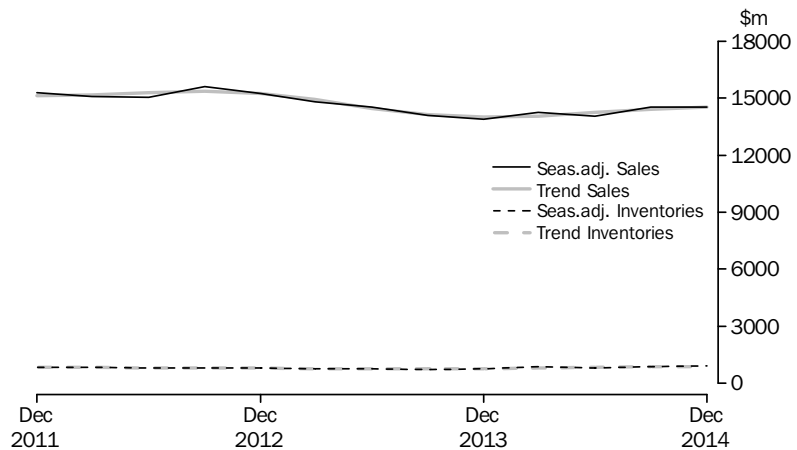
ANALYSIS BY INDUSTRY *continued*

ELECTRICITY, GAS, WATER AND WASTE SERVICES

In current prices, the trend estimate for company gross operating profits fell 4.5% this quarter. The seasonally adjusted estimate fell 7.3%. In current price terms, the trend estimate for wages and salaries rose 0.6% this quarter. The seasonally adjusted estimate fell 1.3%.



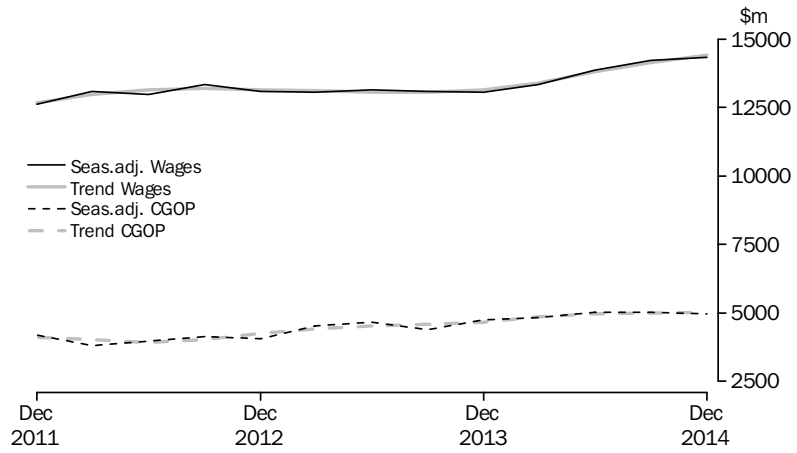
In volume terms, the trend estimate for sales of goods and services rose 1.0% this quarter. The seasonally adjusted estimate remained relatively unchanged. In volume terms, the trend estimate for inventories rose 2.5% this quarter. The seasonally adjusted estimate rose 5.9%.



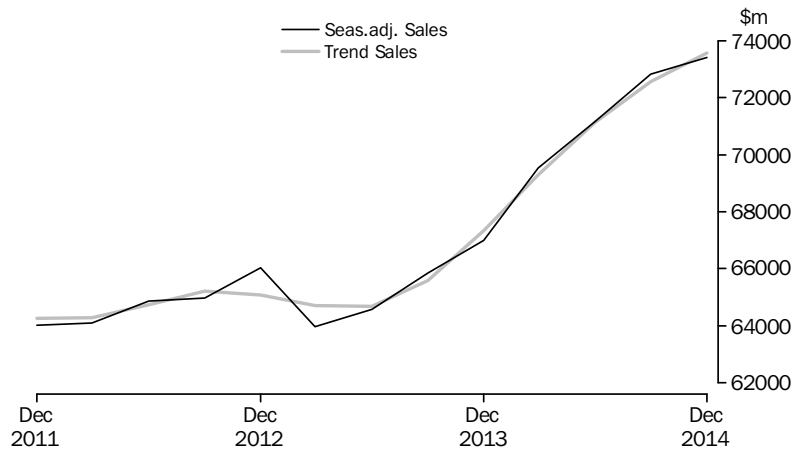
ANALYSIS BY INDUSTRY *continued*

CONSTRUCTION

In current prices, the trend estimate for company gross operating profits remained relatively unchanged this quarter. The seasonally adjusted estimate fell 0.8%. In current price terms, the trend estimate for wages and salaries rose 1.9% this quarter. The seasonally adjusted estimate rose 0.9%.



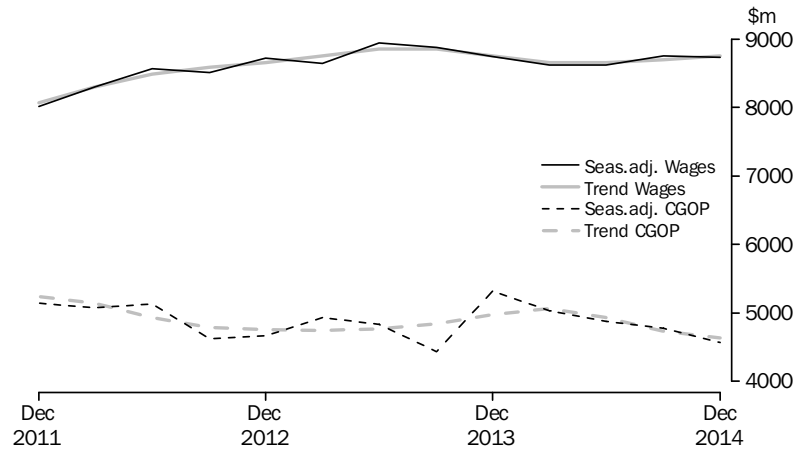
In volume terms, the trend estimate for sales of goods and services rose 1.4% this quarter. The seasonally adjusted estimate rose 0.8%.



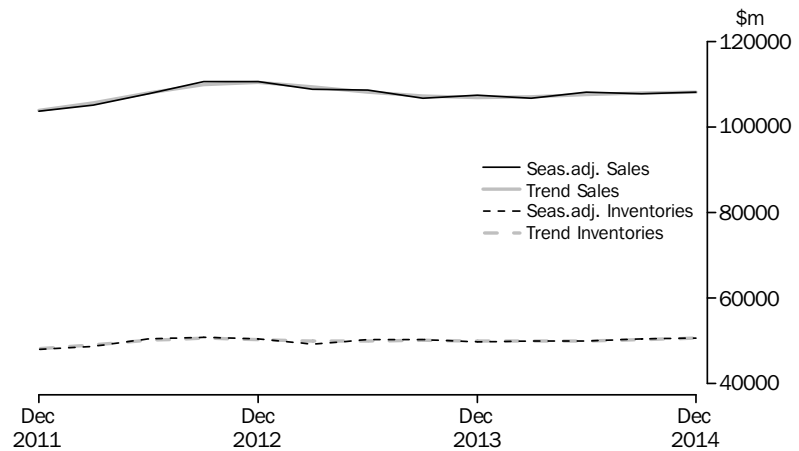
ANALYSIS BY INDUSTRY *continued*

WHOLESALE TRADE

In current prices, the trend estimate for company gross operating profits fell 2.0% this quarter. The seasonally adjusted estimate fell 4.3%. In current price terms, the trend estimate for wages and salaries rose 0.5% this quarter. The seasonally adjusted estimate fell 0.3%.



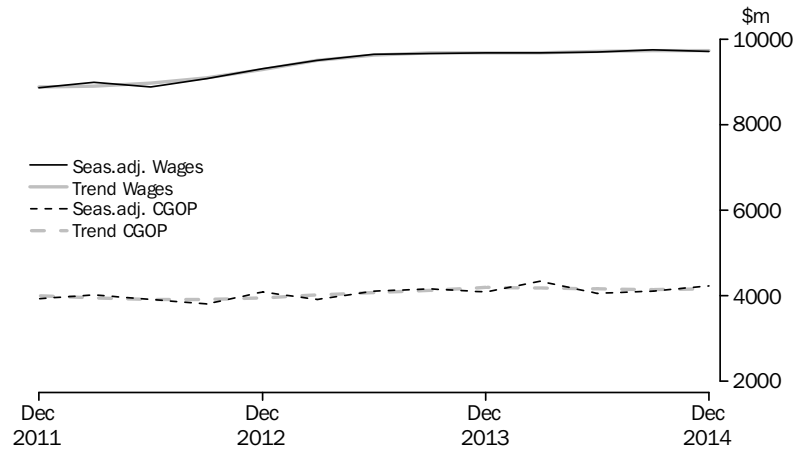
In volume terms, the trend estimate for sales of goods and services rose 0.3% this quarter. The seasonally adjusted estimate rose 0.3%. In volume terms, the trend estimate for inventories rose 0.6% this quarter. The seasonally adjusted estimate rose 0.5%.



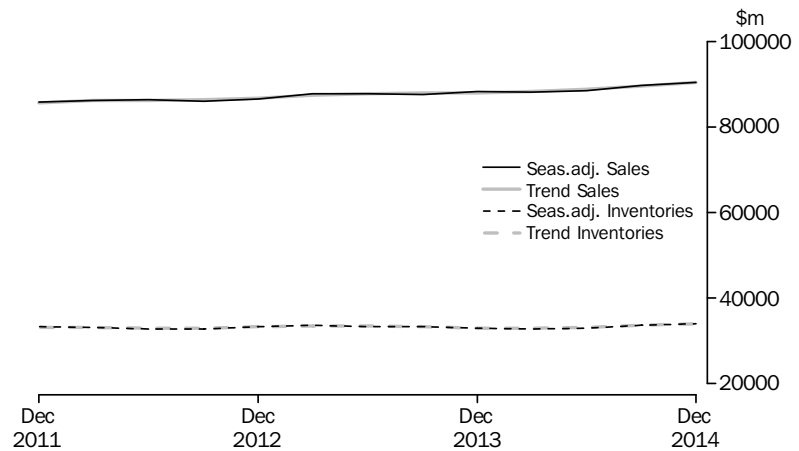
ANALYSIS BY INDUSTRY *continued*

RETAIL TRADE

In current prices, the trend estimate for company gross operating profits rose 0.2% this quarter. The seasonally adjusted estimate rose 2.8%. In current price terms, the trend estimate for wages and salaries rose 0.1% this quarter. The seasonally adjusted estimate fell 0.4%.



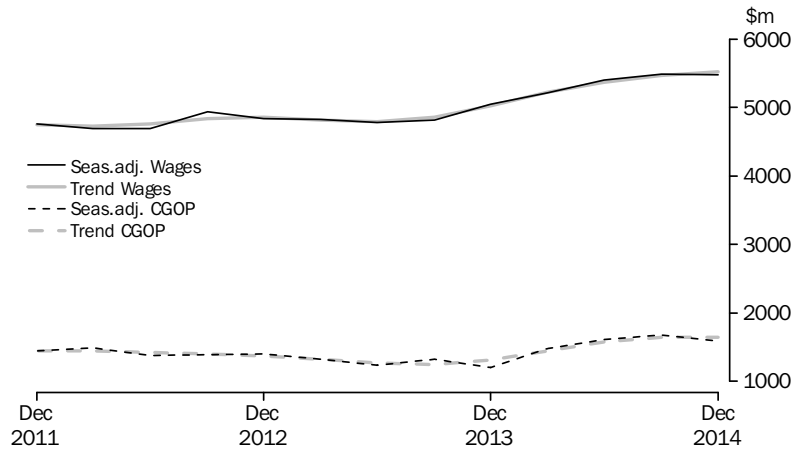
In volume terms, the trend estimate for sales of goods and services rose 0.9% this quarter. The seasonally adjusted estimate rose 0.6%. In volume terms, the trend estimate for inventories rose 1.3% this quarter. The seasonally adjusted estimate rose 0.8%.



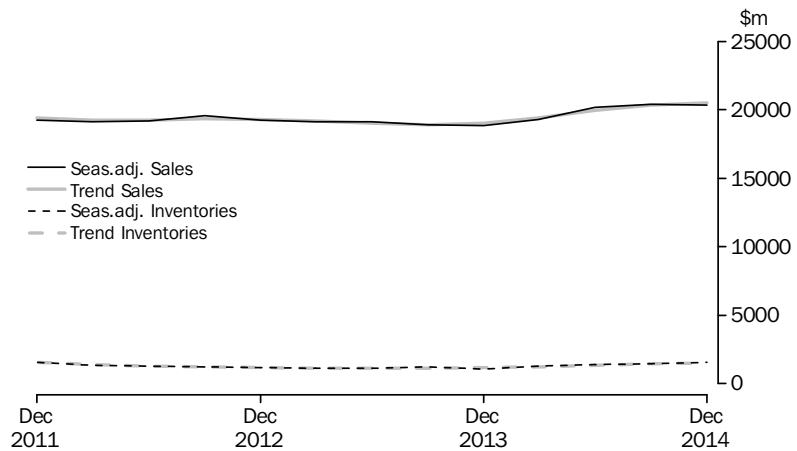
ANALYSIS BY INDUSTRY *continued*

ACCOMMODATION AND FOOD SERVICES

In current prices, the trend estimate for company gross operating profits fell 0.1% this quarter. The seasonally adjusted estimate fell 5.1%. In current price terms, the trend estimate for wages and salaries rose 1.0% this quarter. The seasonally adjusted estimate fell 0.3%.



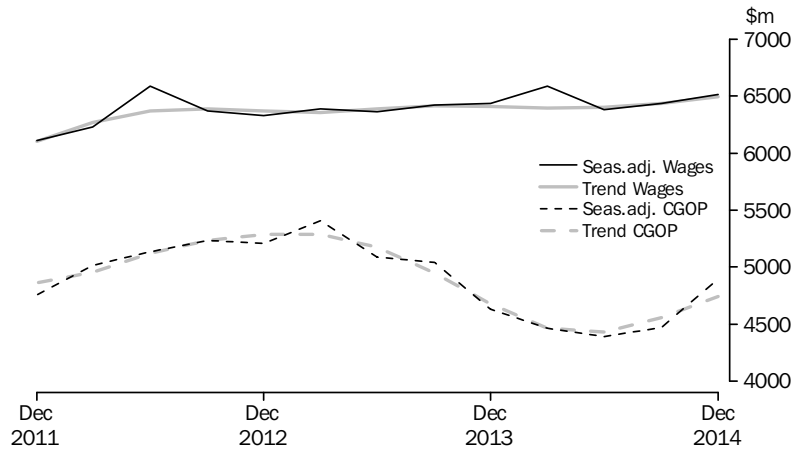
In volume terms, the trend estimate for sales of goods and services rose 0.9% this quarter. The seasonally adjusted estimate fell 0.3%. In volume terms, the trend estimate for inventories rose 5.0% this quarter. The seasonally adjusted estimate rose 7.6%.



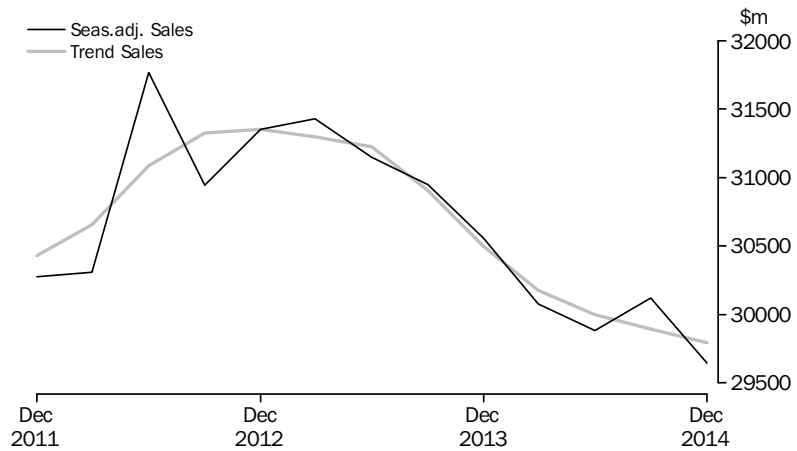
ANALYSIS BY INDUSTRY *continued*

TRANSPORT, POSTAL AND WAREHOUSING

In current prices, the trend estimate for company gross operating profits rose 4.0% this quarter. The seasonally adjusted estimate rose 9.5%. In current price terms, the trend estimate for wages and salaries rose 0.8% this quarter. The seasonally adjusted estimate rose 1.2%.



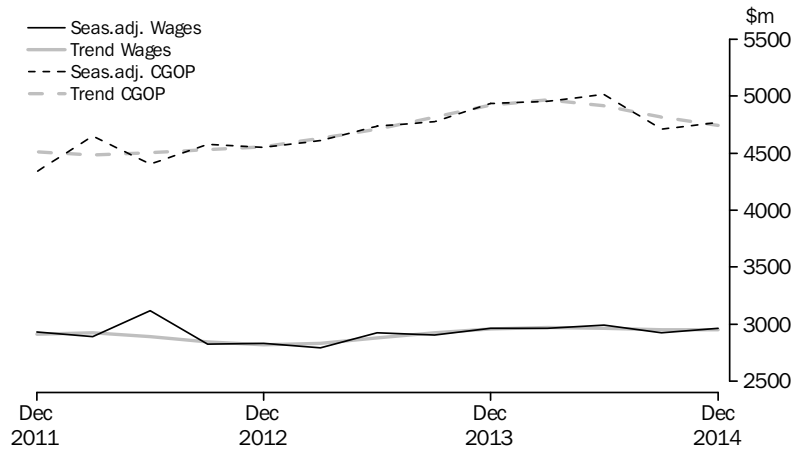
In volume terms, the trend estimate for sales of goods and services fell 0.3% quarter. The seasonally adjusted estimate fell 1.6%.



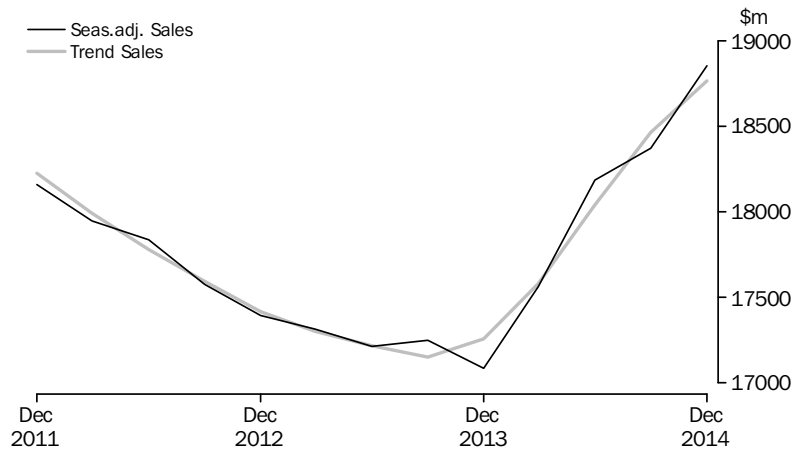
ANALYSIS BY INDUSTRY *continued*

INFORMATION MEDIA AND TELECOMMUNICATIONS

In current prices, the trend estimate for company gross operating profits fell 1.5% this quarter. The seasonally adjusted estimate rose 1.3%. In current price terms, the trend estimate for wages and salaries fell 0.1% this quarter. The seasonally adjusted estimate rose 1.3%.



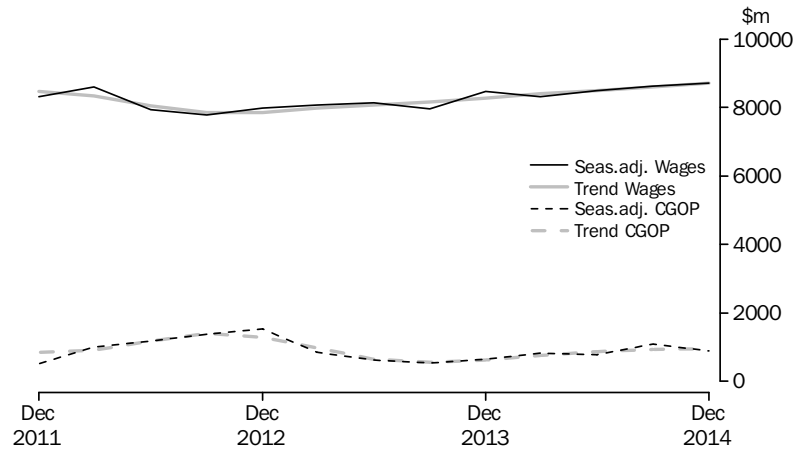
In volume terms, the trend estimate for sales of goods and services rose 1.6% this quarter. The seasonally adjusted estimate rose 2.6%.



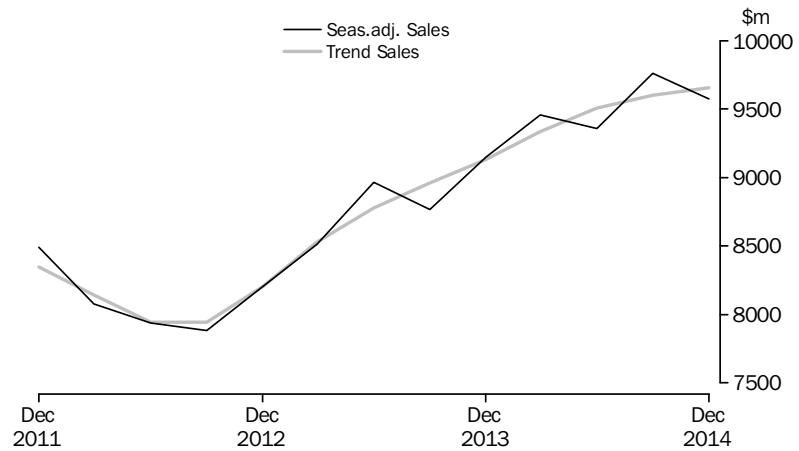
ANALYSIS BY INDUSTRY *continued*

FINANCIAL AND INSURANCE SERVICES

In current prices, the trend estimate for company gross operating profits rose 2.6% this quarter. The seasonally adjusted estimate fell 17.6%. In current price terms, the trend estimate for wages and salaries rose 1.3% this quarter. The seasonally adjusted estimate rose 1.1%.



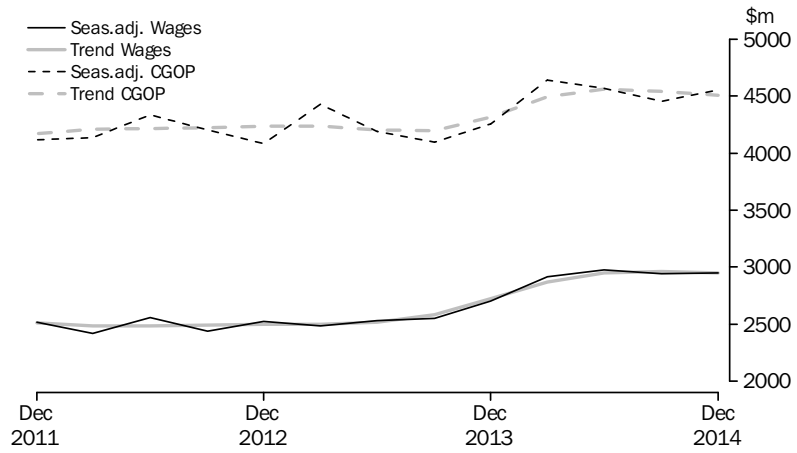
In volume terms, the trend estimate for sales of goods and services rose 0.6% this quarter. The seasonally adjusted estimate fell 1.9%.



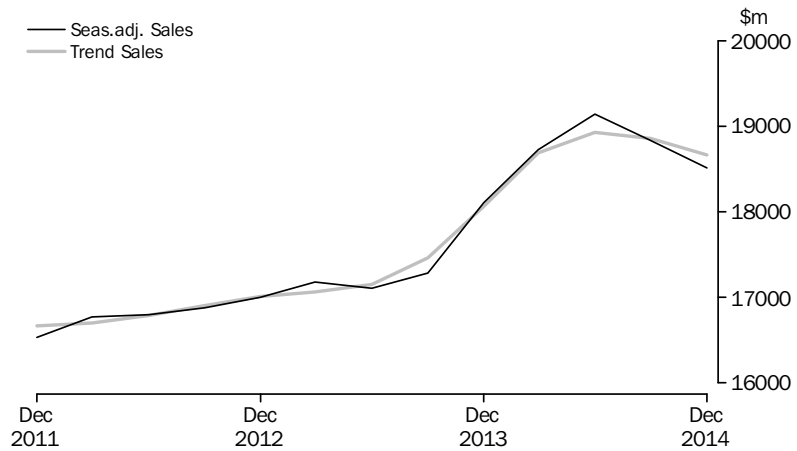
ANALYSIS BY INDUSTRY *continued*

RENTAL, HIRING AND REAL ESTATE SERVICES

In current prices, the trend estimate for company gross operating profits fell 0.8% this quarter. The seasonally adjusted estimate rose 2.1%. In current price terms, the trend estimate for wages and salaries fell 0.4% this quarter. The seasonally adjusted estimate rose 0.4%.



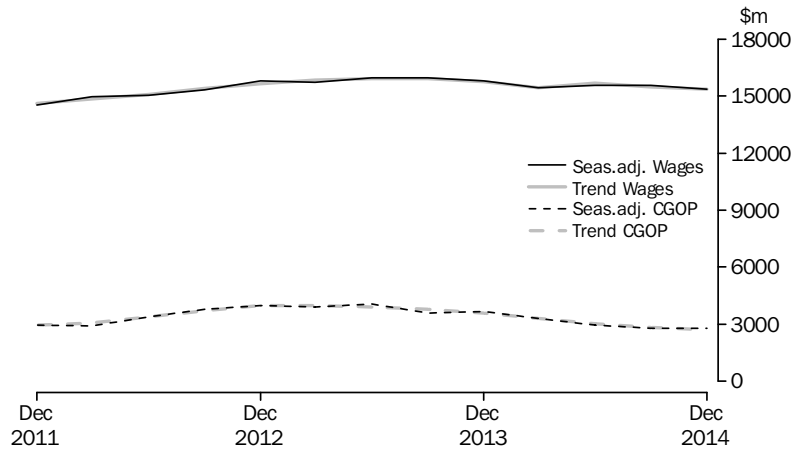
In volume terms, the trend estimate for sales of goods and services fell 1.0% this quarter. The seasonally adjusted estimate fell 1.7%.



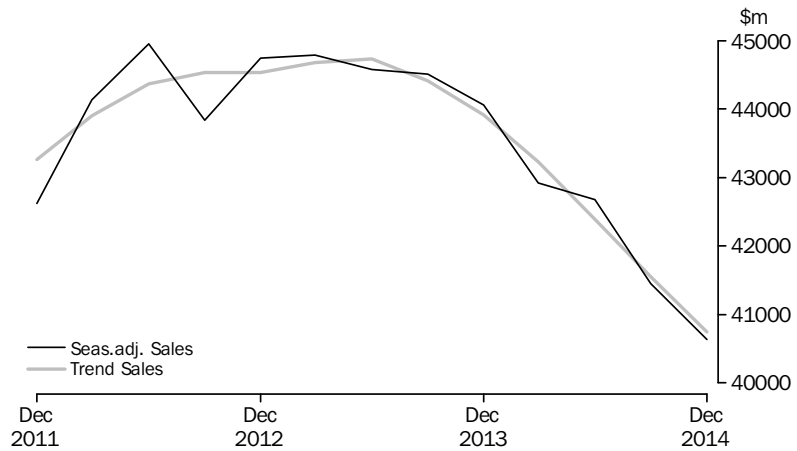
ANALYSIS BY INDUSTRY *continued*

**PROFESSIONAL,
SCIENTIFIC AND
TECHNICAL SERVICES**

In current prices, the trend estimate for company gross operating profits fell 3.9% this quarter. The seasonally adjusted estimate fell 0.3%. In current price terms, the trend estimate for wages and salaries fell 0.9% this quarter. The seasonally adjusted estimate fell 1.3%.



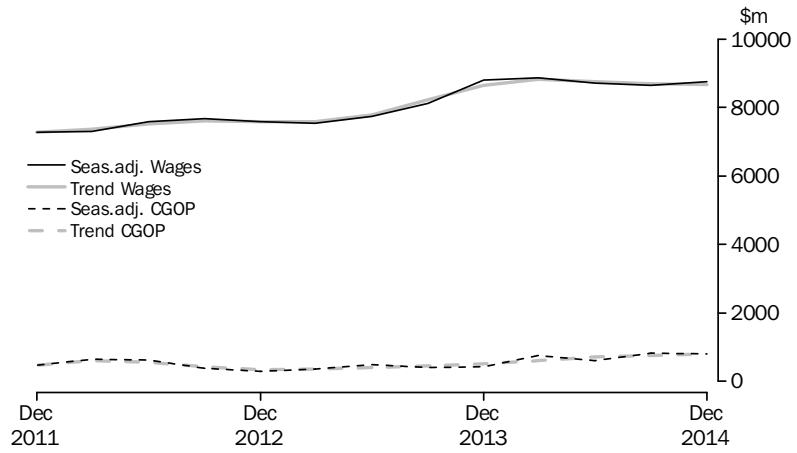
In volume terms, the trend estimate for sales of goods and services fell 1.9% this quarter. The seasonally adjusted estimate fell 2.0%.



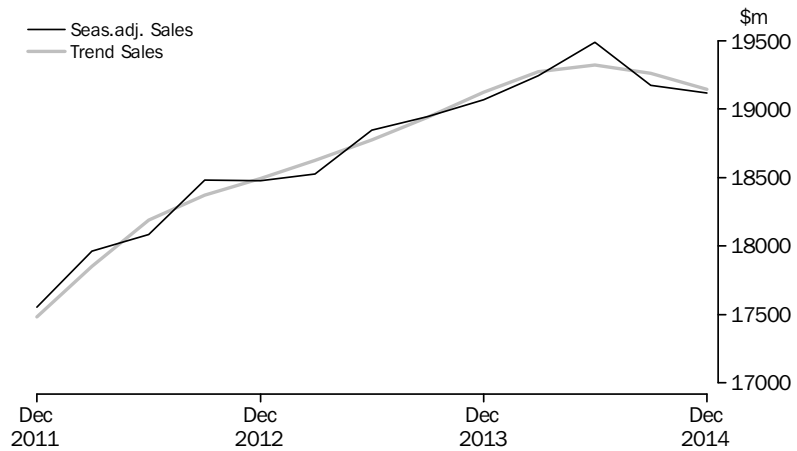
ANALYSIS BY INDUSTRY *continued*

ADMINISTRATIVE AND SUPPORT SERVICES

In current prices, the trend estimate for company gross operating profits rose 4.5% this quarter. The seasonally adjusted estimate fell 0.9%. In current price terms, the trend estimate for wages and salaries fell 0.2% this quarter. The seasonally adjusted estimate rose 1.3%.



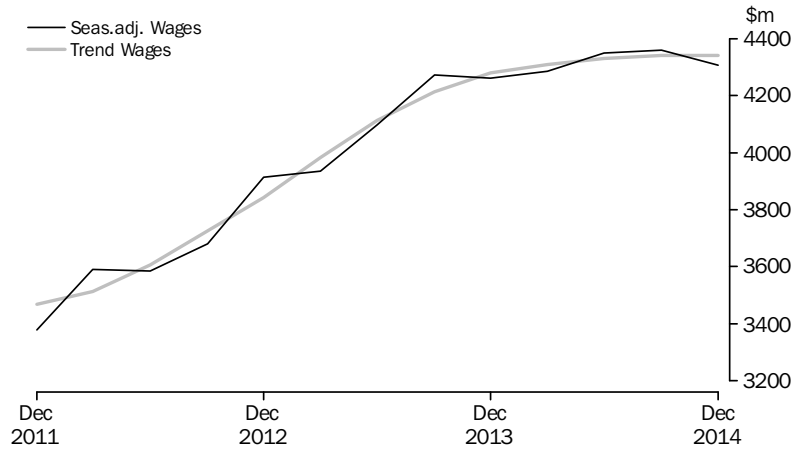
In volume terms, the trend estimate for sales of goods and services fell 0.6% this quarter. The seasonally adjusted estimate fell 0.3%.



ANALYSIS BY INDUSTRY *continued*

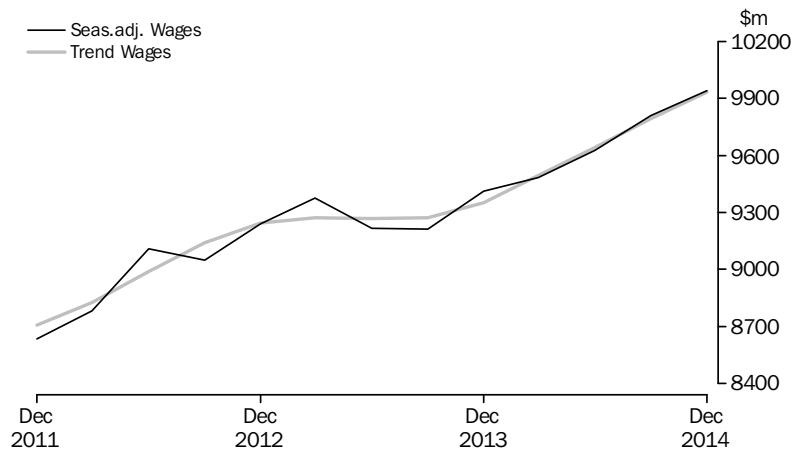
EDUCATION AND TRAINING

In current price terms, the trend estimate for wages and salaries remained relatively unchanged this quarter. The seasonally adjusted estimate fell 1.2%.



HEALTH CARE AND SOCIAL ASSISTANCE

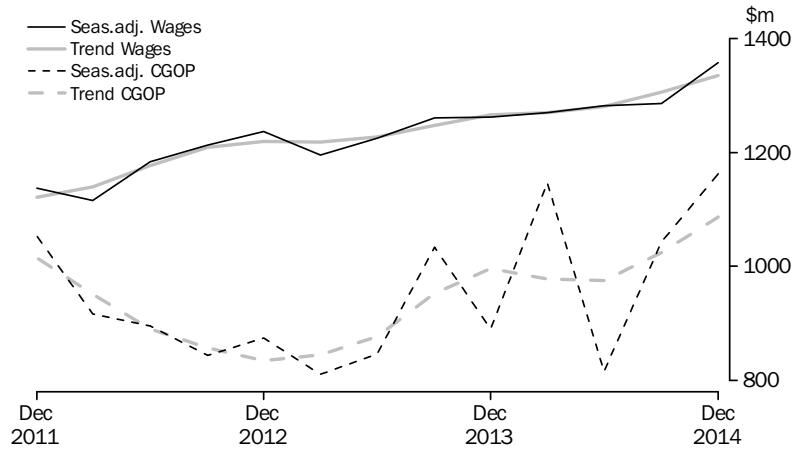
In current price terms, the trend estimate for wages and salaries rose 1.4% this quarter. The seasonally adjusted estimate rose 1.3%.



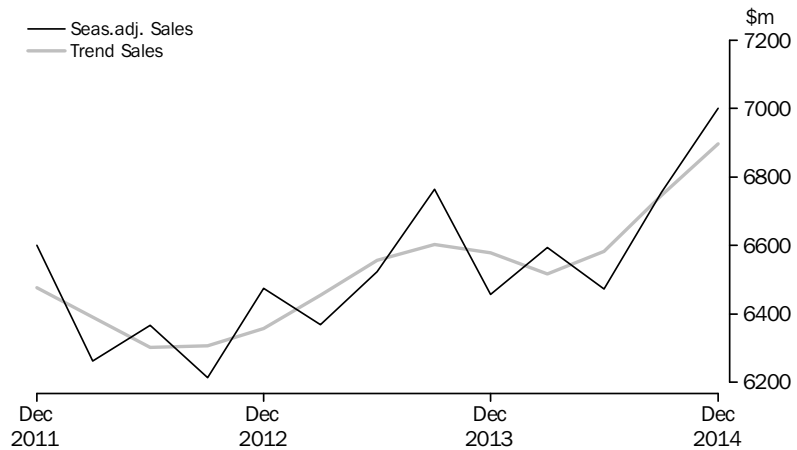
ANALYSIS BY INDUSTRY *continued*

ARTS AND RECREATION SERVICES

In current prices, the trend estimate for company gross operating profits rose 6.2% this quarter. The seasonally adjusted estimate rose 11.5%. In current price terms, the trend estimate for wages and salaries rose 2.3%. The seasonally adjusted estimate rose 5.6%.



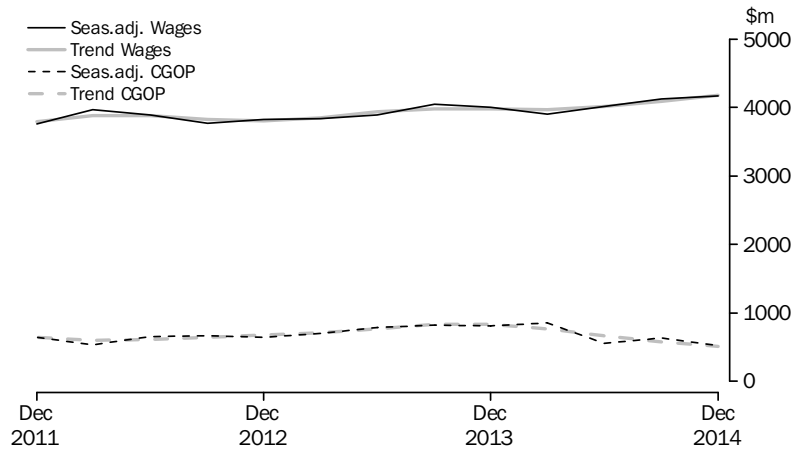
In volume terms, the trend estimate for sales of goods and services rose 2.2% this quarter. The seasonally adjusted estimate rose 3.6%.



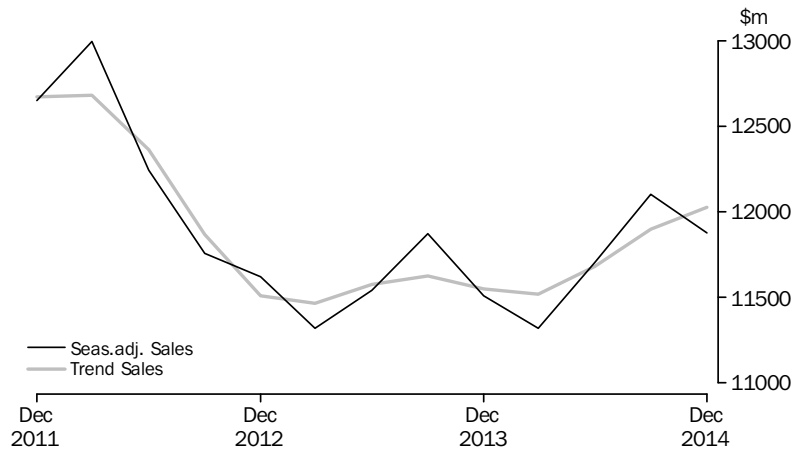
ANALYSIS BY INDUSTRY *continued*

OTHER SERVICES

In current prices, the trend estimate for company gross operating profits fell 11.3% this quarter. The seasonally adjusted estimate fell 17.8%. In current price terms, the trend estimate for wages and salaries rose 2.0% this quarter. The seasonally adjusted estimate rose 1.3%.



In volume terms, the trend estimate for sales of goods and services rose 1.1% this quarter. The seasonally adjusted estimate fell 1.9%.



INVENTORIES, Chain volume measures(a)

	<i>Mining</i>	<i>Manufacturing</i>	<i>Electricity, gas, water and waste services</i>	<i>Wholesale trade</i>	<i>Retail trade</i>	<i>Accommodation and food services</i>	<i>Total</i>
	\$m	\$m	\$m	\$m	\$m	\$m	\$m
ORIGINAL							
2012-13							
December	16 207	47 267	784	51 668	33 828	1 217	152 205
March	16 613	48 555	796	49 459	33 544	1 121	151 406
June	16 825	48 280	779	49 425	32 371	1 119	150 148
2013-14							
September	17 948	47 274	742	49 932	33 979	1 207	152 429
December	17 198	46 676	749	51 040	33 520	1 110	151 634
March	16 888	45 669	888	49 932	32 605	1 263	148 559
June	17 426	45 819	820	49 052	31 941	1 364	147 680
2014-15							
September	18 482	45 448	877	50 124	34 457	1 398	152 066
December	17 236	43 395	913	51 862	34 583	1 619	151 092
SEASONALLY ADJUSTED							
2012-13							
December	16 472	47 861	797	50 528	33 306	1 168	151 375
March	16 554	48 222	787	49 249	33 750	1 134	150 997
June	16 958	48 039	785	50 309	33 379	1 120	151 987
2013-14							
September	17 553	47 305	735	50 249	33 305	1 247	151 765
December	17 511	47 308	759	49 861	32 972	1 062	150 775
March	16 861	45 347	877	49 866	32 798	1 275	148 316
June	17 544	45 600	827	49 929	32 997	1 369	149 566
2014-15							
September	18 049	45 497	872	50 428	33 741	1 442	151 329
December	17 570	43 908	923	50 672	34 006	1 552	150 070
TREND							
2012-13							
December	16 407	47 997	800	50 330	33 242	1 166	151 182
March	16 685	48 098	788	49 974	33 522	1 145	151 535
June	17 076	47 972	763	49 966	33 512	1 145	151 802
2013-14							
September	17 330	47 528	759	50 074	33 244	1 148	151 444
December	17 326	46 726	784	50 009	32 953	1 174	150 298
March	17 316	46 048	822	49 865	32 888	1 241	149 466
June	17 479	45 510	855	50 041	33 144	1 350	149 677
2014-15							
September	17 715	44 983	879	50 341	33 573	1 459	150 288
December	17 894	44 465	901	50 665	34 025	1 533	150 903

(a) Reference year for chain volume estimates is 2012-13

INVENTORIES, Chain volume measures - Percentage change from previous quarter(a)

	Mining	Manufacturing	Electricity, gas, water and waste services	Wholesale trade	Retail trade	Accommodation and food services	Total
	%	%	%	%	%	%	%
ORIGINAL							
2012-13							
December	-1.1	-1.9	-4.7	2.7	1.5	2.0	0.5
March	2.5	2.7	1.5	-4.3	-0.8	-7.9	-0.5
June	1.3	-0.6	-2.2	-0.1	-3.5	-0.2	-0.8
2013-14							
September	6.7	-2.1	-4.8	1.0	5.0	7.9	1.5
December	-4.2	-1.3	1.0	2.2	-1.4	-8.1	-0.5
March	-1.8	-2.2	18.6	-2.2	-2.7	13.8	-2.0
June	3.2	0.3	-7.7	-1.8	-2.0	8.1	-0.6
2014-15							
September	6.1	-0.8	7.0	2.2	7.9	2.4	3.0
December	-6.7	-4.5	4.1	3.5	0.4	15.9	-0.6
SEASONALLY ADJUSTED							
2012-13							
December	2.6	-0.7	-1.9	-0.5	1.8	-5.3	0.3
March	0.5	0.8	-1.2	-2.5	1.3	-2.9	-0.2
June	2.4	-0.4	-0.3	2.2	-1.1	-1.2	0.7
2013-14							
September	3.5	-1.5	-6.3	-0.1	-0.2	11.4	-0.1
December	-0.2	0.0	3.2	-0.8	-1.0	-14.8	-0.7
March	-3.7	-4.1	15.5	0.0	-0.5	20.0	-1.6
June	4.1	0.6	-5.7	0.1	0.6	7.4	0.8
2014-15							
September	2.9	-0.2	5.4	1.0	2.3	5.3	1.2
December	-2.7	-3.5	5.9	0.5	0.8	7.6	-0.8
TREND							
2012-13							
December	2.1	0.1	-0.6	-0.5	0.9	-4.9	0.3
March	1.7	0.2	-1.4	-0.7	0.8	-1.8	0.2
June	2.3	-0.3	-3.2	0.0	0.0	-0.1	0.2
2013-14							
September	1.5	-0.9	-0.5	0.2	-0.8	0.3	-0.2
December	0.0	-1.7	3.3	-0.1	-0.9	2.3	-0.8
March	-0.1	-1.5	4.8	-0.3	-0.2	5.7	-0.6
June	0.9	-1.2	4.0	0.4	0.8	8.8	0.1
2014-15							
September	1.3	-1.2	2.8	0.6	1.3	8.1	0.4
December	1.0	-1.2	2.5	0.6	1.3	5.0	0.4

(a) Reference year for chain volume estimates is 2012-13

INVENTORIES, Current prices

	<i>Mining</i>	<i>Manufacturing</i>	<i>Electricity, gas, water and waste services</i>	<i>Wholesale trade</i>	<i>Retail trade</i>	<i>Accommodation and food services</i>	<i>Total</i>
	\$m	\$m	\$m	\$m	\$m	\$m	\$m
ORIGINAL							
2012-13							
December	15 939	47 100	796	51 481	33 928	1 227	150 472
March	16 426	48 572	824	49 548	33 406	1 132	149 909
June	16 310	48 461	806	49 682	32 316	1 122	148 697
2013-14							
September	18 236	48 218	776	51 678	34 381	1 222	154 511
December	17 450	47 744	806	52 868	34 077	1 142	154 088
March	17 474	47 575	972	52 395	33 341	1 304	153 061
June	16 410	47 607	912	51 043	32 708	1 397	150 077
2014-15							
September	16 514	47 258	947	52 266	35 257	1 444	153 685
December	14 866	45 322	984	54 354	35 049	1 703	152 278
SEASONALLY ADJUSTED							
2012-13							
December	16 285	47 694	809	50 355	33 404	1 177	149 724
March	16 540	48 177	815	49 357	33 611	1 145	149 645
June	16 340	48 202	812	50 570	33 323	1 123	150 368
2013-14							
September	17 697	48 259	769	52 012	33 699	1 262	153 698
December	17 831	48 375	817	51 648	33 520	1 093	153 284
March	17 586	47 180	959	52 325	33 539	1 317	152 905
June	16 479	47 342	920	51 952	33 789	1 402	151 885
2014-15							
September	16 002	47 315	941	52 576	34 524	1 490	152 849
December	15 187	45 843	995	53 119	34 464	1 632	151 239
TREND							
2012-13							
December	16 247	47 750	807	50 096	33 251	1 170	149 323
March	16 389	48 039	811	50 018	33 471	1 153	149 881
June	16 831	48 276	800	50 597	33 554	1 154	151 212
2013-14							
September	17 418	48 295	798	51 445	33 533	1 165	152 654
December	17 736	47 993	809	51 989	33 518	1 202	153 246
March	17 460	47 668	933	52 070	33 632	1 276	153 040
June	16 689	47 288	941	52 228	33 912	1 391	152 448
2014-15							
September	15 928	46 847	952	52 574	34 275	1 512	152 088
December	15 187	46 373	973	52 947	34 615	1 608	151 702

SALES OF GOODS AND SERVICES, Chain volume measures(a)

	Mining	Manufacturing	Electricity, gas, water and waste services	Construction	Wholesale trade	Retail trade	Accommodation and food services	Transport, postal and warehousing
	\$m	\$m	\$m	\$m	\$m	\$m	\$m	\$m
ORIGINAL								
2012-13								
December	50 245	93 739	14 653	69 361	113 756	93 663	20 298	32 580
March	47 098	83 962	14 167	58 256	104 022	83 731	18 695	30 360
June	52 651	88 942	14 731	66 751	109 630	85 746	18 491	30 725
2013-14								
September	55 233	90 567	14 978	66 162	107 330	86 294	18 952	31 182
December	58 012	92 818	13 334	70 342	110 332	95 488	19 890	31 718
March	53 734	83 124	13 623	63 336	102 456	84 198	18 868	29 018
June	59 234	87 864	14 231	73 477	108 459	86 491	19 493	29 536
2014-15								
September	60 222	88 681	15 503	73 232	108 321	88 507	20 430	30 382
December	65 285	90 467	13 938	77 101	111 386	97 730	21 462	30 749
SEASONALLY ADJUSTED								
2012-13								
December	48 509	90 367	15 230	66 046	110 567	86 569	19 228	31 350
March	50 323	88 993	14 813	63 979	108 834	87 702	19 120	31 431
June	51 814	88 901	14 531	64 574	108 658	87 681	19 149	31 147
2013-14								
September	54 637	89 013	14 072	65 842	106 646	87 543	18 925	30 946
December	55 917	89 380	13 884	66 979	107 273	88 222	18 843	30 554
March	57 379	88 083	14 239	69 536	106 624	88 159	19 311	30 075
June	58 455	87 831	14 045	71 164	108 071	88 459	20 184	29 881
2014-15								
September	59 541	87 212	14 525	72 822	107 661	89 756	20 399	30 120
December	62 889	87 178	14 523	73 404	108 018	90 315	20 333	29 647
TREND								
2012-13								
December	48 951	89 994	15 246	65 097	110 320	86 728	19 300	31 351
March	50 215	89 402	14 898	64 701	109 418	87 304	19 186	31 299
June	52 106	89 008	14 435	64 684	108 159	87 688	19 029	31 224
2013-14								
September	54 227	89 022	14 139	65 586	107 234	87 832	18 909	30 906
December	55 994	88 922	13 999	67 334	106 912	87 926	18 994	30 498
March	57 235	88 399	14 051	69 303	107 100	88 225	19 421	30 175
June	58 519	87 781	14 227	71 128	107 546	88 777	19 956	29 998
2014-15								
September	60 206	87 337	14 396	72 571	107 834	89 503	20 322	29 893
December	61 963	87 085	14 538	73 569	108 105	90 309	20 503	29 794

(a) Reference year for chain volume estimates is 2012-13

SALES OF GOODS AND SERVICES, Chain volume measures(a) *continued*

	<i>Information media and tele- communications</i>	<i>Financial and insurance services(b)</i>	<i>Rental, hiring and real estate services</i>	<i>Professional, scientific and technical services</i>	<i>Administrative and support services</i>	<i>Arts and recreation services</i>	<i>Other services</i>
	\$m	\$m	\$m	\$m	\$m	\$m	\$m
ORIGINAL							
2012-13							
December	17 781	8 770	17 513	46 845	19 126	6 737	11 750
March	16 798	7 863	16 647	41 406	18 100	6 219	10 935
June	17 486	9 069	17 100	45 449	18 674	6 417	11 546
2013-14							
September	17 116	8 711	17 297	44 914	18 890	6 748	12 148
December	17 448	9 798	18 624	46 077	19 737	6 735	11 622
March	17 058	8 734	18 170	39 721	18 800	6 444	10 928
June	18 454	9 459	19 148	43 570	19 309	6 350	11 704
2014-15							
September	18 236	9 694	18 812	41 789	19 121	6 740	12 408
December	19 232	10 262	19 031	42 427	19 773	7 309	11 980
SEASONALLY ADJUSTED							
2012-13							
December	17 395	8 201	16 997	44 738	18 477	6 474	11 621
March	17 315	8 512	17 179	44 784	18 527	6 368	11 320
June	17 214	8 968	17 108	44 574	18 848	6 524	11 540
2013-14							
September	17 249	8 765	17 283	44 508	18 946	6 763	11 871
December	17 085	9 146	18 103	44 054	19 069	6 457	11 507
March	17 561	9 456	18 725	42 917	19 242	6 593	11 319
June	18 186	9 359	19 134	42 672	19 489	6 472	11 703
2014-15							
September	18 373	9 757	18 829	41 453	19 172	6 754	12 103
December	18 851	9 573	18 511	40 633	19 114	7 000	11 875
TREND							
2012-13							
December	17 416	8 203	17 007	44 537	18 495	6 358	11 508
March	17 303	8 529	17 061	44 670	18 623	6 454	11 465
June	17 216	8 775	17 151	44 736	18 772	6 556	11 576
2013-14							
September	17 149	8 961	17 459	44 411	18 942	6 604	11 627
December	17 256	9 129	18 059	43 912	19 121	6 579	11 548
March	17 579	9 336	18 692	43 223	19 273	6 517	11 520
June	18 039	9 507	18 929	42 394	19 319	6 582	11 683
2014-15							
September	18 465	9 598	18 857	41 550	19 258	6 746	11 900
December	18 764	9 657	18 661	40 742	19 144	6 897	12 027

(a) Reference year for chain volume estimates is 2012-13

(b) See paragraph 7 of Explanatory Notes for limited scope and coverage of this industry

SALES OF GOODS AND SERVICES, Chain volume measures - Percentage change from previous quarter(a)

	Mining	Manufacturing	Electricity, gas, water and waste services	Construction	Wholesale trade	Retail trade	Accommodation and food services	Transport, postal and warehousing
	%	%	%	%	%	%	%	%
ORIGINAL								
2012-13								
December	1.9	1.3	-11.9	6.3	2.1	10.7	3.8	4.5
March	-6.3	-10.4	-3.3	-16.0	-8.6	-10.6	-7.9	-6.8
June	11.8	5.9	4.0	14.6	5.4	2.4	-1.1	1.2
2013-14								
September	4.9	1.8	1.7	-0.9	-2.1	0.6	2.5	1.5
December	5.0	2.5	-11.0	6.3	2.8	10.7	5.0	1.7
March	-7.4	-10.4	2.2	-10.0	-7.1	-11.8	-5.1	-8.5
June	10.2	5.7	4.5	16.0	5.9	2.7	3.3	1.8
2014-15								
September	1.7	0.9	8.9	-0.3	-0.1	2.3	4.8	2.9
December	8.4	2.0	-10.1	5.3	2.8	10.4	5.1	1.2
SEASONALLY ADJUSTED								
2012-13								
December	-0.5	-0.5	-2.5	1.6	0.0	0.8	-1.6	1.3
March	3.7	-1.5	-2.7	-3.1	-1.6	1.3	-0.6	0.3
June	3.0	-0.1	-1.9	0.9	-0.2	0.0	0.2	-0.9
2013-14								
September	5.4	0.1	-3.2	2.0	-1.9	-0.2	-1.2	-0.6
December	2.3	0.4	-1.3	1.7	0.6	0.8	-0.4	-1.3
March	2.6	-1.5	2.6	3.8	-0.6	-0.1	2.5	-1.6
June	1.9	-0.3	-1.4	2.3	1.4	0.3	4.5	-0.6
2014-15								
September	1.9	-0.7	3.4	2.3	-0.4	1.5	1.1	0.8
December	5.6	0.0	0.0	0.8	0.3	0.6	-0.3	-1.6
TREND								
2012-13								
December	1.4	-0.5	-0.6	-0.2	0.5	0.6	-0.1	0.1
March	2.6	-0.7	-2.3	-0.6	-0.8	0.7	-0.6	-0.2
June	3.8	-0.4	-3.1	0.0	-1.2	0.4	-0.8	-0.2
2013-14								
September	4.1	0.0	-2.1	1.4	-0.9	0.2	-0.6	-1.0
December	3.3	-0.1	-1.0	2.7	-0.3	0.1	0.4	-1.3
March	2.2	-0.6	0.4	2.9	0.2	0.3	2.2	-1.1
June	2.2	-0.7	1.3	2.6	0.4	0.6	2.8	-0.6
2014-15								
September	2.9	-0.5	1.2	2.0	0.3	0.8	1.8	-0.4
December	2.9	-0.3	1.0	1.4	0.3	0.9	0.9	-0.3

(a) Reference year for chain volume estimates is 2012-13

SALES OF GOODS AND SERVICES, Chain volume measures - Percentage change from previous quarter(a) *continued*

	Information media and tele- communications	Financial and insurance services(b)	Rental, hiring and real estate services	Professional, scientific and technical services	Administrative and support services	Arts and recreation services	Other services
	%	%	%	%	%	%	%
ORIGINAL							
2012-13							
December	1.9	11.8	3.2	5.8	3.8	8.8	-2.1
March	-5.5	-10.3	-4.9	-11.6	-5.4	-7.7	-6.9
June	4.1	15.3	2.7	9.8	3.2	3.2	5.6
2013-14							
September	-2.1	-3.9	1.2	-1.2	1.2	5.2	5.2
December	1.9	12.5	7.7	2.6	4.5	-0.2	-4.3
March	-2.2	-10.9	-2.4	-13.8	-4.7	-4.3	-6.0
June	8.2	8.3	5.4	9.7	2.7	-1.5	7.1
2014-15							
September	-1.2	2.5	-1.8	-4.1	-1.0	6.1	6.0
December	5.5	5.9	1.2	1.5	3.4	8.5	-3.5
SEASONALLY ADJUSTED							
2012-13							
December	-1.0	4.0	0.7	2.1	0.0	4.2	-1.1
March	-0.5	3.8	1.1	0.1	0.3	-1.6	-2.6
June	-0.6	5.4	-0.4	-0.5	1.7	2.4	1.9
2013-14							
September	0.2	-2.3	1.0	-0.1	0.5	3.7	2.9
December	-1.0	4.3	4.7	-1.0	0.6	-4.5	-3.1
March	2.8	3.4	3.4	-2.6	0.9	2.1	-1.6
June	3.6	-1.0	2.2	-0.6	1.3	-1.8	3.4
2014-15							
September	1.0	4.3	-1.6	-2.9	-1.6	4.4	3.4
December	2.6	-1.9	-1.7	-2.0	-0.3	3.6	-1.9
TREND							
2012-13							
December	-1.0	3.3	0.6	0.0	0.7	0.8	-3.0
March	-0.6	4.0	0.3	0.3	0.7	1.5	-0.4
June	-0.5	2.9	0.5	0.1	0.8	1.6	1.0
2013-14							
September	-0.4	2.1	1.8	-0.7	0.9	0.7	0.4
December	0.6	1.9	3.4	-1.1	0.9	-0.4	-0.7
March	1.9	2.3	3.5	-1.6	0.8	-0.9	-0.2
June	2.6	1.8	1.3	-1.9	0.2	1.0	1.4
2014-15							
September	2.4	1.0	-0.4	-2.0	-0.3	2.5	1.9
December	1.6	0.6	-1.0	-1.9	-0.6	2.2	1.1

(a) Reference year for chain volume estimates is 2012-13

(b) See paragraph 7 of Explanatory Notes for limited scope and coverage of this industry

SALES OF GOODS AND SERVICES, Current prices

	Mining	Manufacturing	Electricity, gas, water and waste services	Construction	Wholesale trade	Retail trade	Accommodation and food services	Transport, postal and warehousing
	\$m	\$m	\$m	\$m	\$m	\$m	\$m	\$m
ORIGINAL								
2012-13								
December	50 235	93 792	14 761	69 155	113 217	93 966	20 377	32 396
March	47 243	84 330	14 456	58 416	104 439	83 230	18 795	30 658
June	51 234	89 379	15 005	67 296	110 822	85 569	18 496	31 071
2013-14								
September	56 269	92 460	15 699	67 120	112 594	86 842	19 115	31 973
December	59 085	95 136	13 983	71 680	115 231	96 532	20 350	33 050
March	55 712	87 007	14 412	64 856	108 871	85 347	19 374	30 383
June	54 460	91 661	15 014	75 653	113 655	87 910	19 901	30 985
2014-15								
September	51 582	92 560	15 573	75 825	112 305	89 940	21 025	32 168
December	53 480	94 561	14 041	79 678	115 754	98 622	22 441	32 844
SEASONALLY ADJUSTED								
2012-13								
December	48 948	90 386	15 332	65 857	110 001	86 742	19 322	31 114
March	49 822	89 405	15 073	64 137	109 243	87 289	19 237	31 787
June	50 751	89 329	14 798	65 102	109 893	87 362	19 152	31 483
2013-14								
September	55 560	90 886	14 736	66 791	111 872	88 278	19 050	31 735
December	57 389	91 596	14 540	68 253	112 017	89 093	19 309	31 754
March	58 608	92 117	15 055	71 196	113 267	89 526	19 843	31 477
June	54 150	91 643	14 799	73 269	113 252	89 768	20 591	31 419
2014-15								
September	50 869	91 054	14 598	75 400	111 616	91 411	20 954	31 926
December	51 960	90 993	14 592	75 849	112 049	91 020	21 294	31 551
TREND								
2012-13								
December	49 233	89 781	15 184	64 917	109 713	86 792	19 300	31 171
March	49 518	89 607	15 115	64 861	109 664	87 109	19 250	31 477
June	51 766	89 801	14 851	65 223	110 242	87 602	19 116	31 699
2013-14								
September	54 998	90 607	14 697	66 502	111 289	88 266	19 107	31 710
December	57 457	91 570	14 744	68 620	112 476	88 888	19 363	31 620
March	57 159	91 920	14 825	71 013	112 986	89 547	19 880	31 578
June	54 662	91 636	14 801	73 223	112 773	90 174	20 463	31 583
2014-15								
September	52 317	91 252	14 688	74 972	112 309	90 806	20 951	31 650
December	50 761	90 877	14 530	76 248	111 691	91 380	21 345	31 715

SALES OF GOODS AND SERVICES, Current prices *continued*

	Information media and tele- communications	Financial and insurance services(a)	Rental, hiring and real estate services	Professional, scientific and technical services	Administrative and support services	Arts and recreation services	Other services
	\$m	\$m	\$m	\$m	\$m	\$m	\$m
ORIGINAL							
2012-13							
December	17 820	8 748	17 505	46 840	19 118	6 731	11 732
March	16 834	7 873	16 672	41 472	18 148	6 225	10 981
June	17 599	9 117	17 151	45 624	18 746	6 443	11 622
2013-14							
September	17 207	8 859	17 412	45 277	19 149	6 860	12 342
December	17 644	10 041	18 785	46 827	20 083	6 899	11 816
March	17 331	9 002	18 362	40 493	19 184	6 634	11 174
June	18 369	9 796	19 449	44 491	19 748	6 562	11 996
2014-15							
September	18 114	10 087	19 219	43 069	19 767	6 999	12 822
December	18 883	10 697	19 593	43 452	20 480	7 605	12 438
SEASONALLY ADJUSTED							
2012-13							
December	17 407	8 179	17 020	44 823	18 475	6 427	11 601
March	17 376	8 523	17 224	44 910	18 577	6 412	11 366
June	17 306	9 014	17 206	44 690	18 892	6 577	11 615
2013-14							
September	17 361	8 914	17 312	44 804	19 232	6 854	12 060
December	17 264	9 373	18 273	44 815	19 400	6 572	11 698
March	17 869	9 746	18 934	43 844	19 638	6 836	11 573
June	18 055	9 691	19 490	43 568	19 905	6 712	11 993
2014-15							
September	18 282	10 152	19 156	42 631	19 848	6 988	12 506
December	18 487	9 979	19 050	41 584	19 788	7 237	12 328
TREND							
2012-13							
December	17 388	8 183	16 993	44 511	18 473	6 337	11 481
March	17 355	8 543	17 104	44 774	18 670	6 474	11 508
June	17 307	8 838	17 220	44 920	18 890	6 610	11 677
2013-14							
September	17 303	9 101	17 543	44 795	19 172	6 696	11 784
December	17 452	9 349	18 204	44 569	19 443	6 725	11 752
March	17 737	9 624	18 916	44 116	19 670	6 723	11 770
June	18 047	9 846	19 237	43 393	19 804	6 818	11 993
2014-15							
September	18 296	9 978	19 252	42 586	19 856	6 988	12 284
December	18 460	10 072	19 146	41 755	19 848	7 142	12 508

(a) See paragraph 7 of Explanatory Notes for limited scope and coverage of this industry

SALES OF GOODS AND SERVICES BY STATE(a), Current prices

	<i>New South Wales</i>	<i>Victoria</i>	<i>Queensland</i>	<i>South Australia</i>	<i>Western Australia</i>	<i>Tasmania</i>	<i>Northern Territory</i>	<i>Australian Capital Territory</i>
	\$m	\$m	\$m	\$m	\$m	\$m	\$m	\$m
ORIGINAL								
2012-13								
December	182 646	147 267	123 273	37 017	102 318	8 522	7 813	7 536
March	166 547	132 729	108 502	34 330	96 098	8 642	6 690	6 234
June	177 456	139 649	116 357	36 546	102 016	8 424	7 908	6 819
2013-14								
September	182 706	142 224	119 557	37 742	103 506	8 510	8 341	6 592
December	190 611	148 765	123 676	40 462	109 514	9 155	8 277	6 621
March	179 937	134 387	110 961	36 980	104 010	8 707	7 303	5 857
June	189 633	142 613	117 675	38 567	108 772	8 155	7 685	6 551
2014-15								
September	192 229	144 254	119 423	36 954	106 468	8 053	7 758	5 917
December	198 473	150 962	123 923	39 220	108 848	8 526	8 510	6 106
SEASONALLY ADJUSTED								
2012-13								
December	175 738	140 638	117 320	35 613	99 118	8 256	7 335	7 390
March	175 084	140 266	116 748	35 711	100 134	8 621	7 280	6 713
June	177 369	139 507	116 611	36 349	101 496	8 526	8 142	6 516
2013-14								
September	181 091	141 493	117 128	38 001	103 202	8 710	8 001	6 572
December	183 507	141 910	117 556	38 868	106 107	8 868	7 751	6 467
March	188 969	142 098	119 245	38 516	108 376	8 683	7 947	6 328
June	189 557	142 583	118 090	38 356	108 185	8 254	7 914	6 245
2014-15								
September	190 582	143 451	117 067	37 205	106 185	8 244	7 449	5 917
December	191 120	143 943	117 687	37 658	105 455	8 258	7 960	5 947
TREND								
2012-13								
December	174 888	139 871	116 666	35 767	99 303	8 432	7 210	7 060
March	175 642	140 089	116 926	35 830	100 075	8 463	7 595	6 809
June	177 548	140 447	116 780	36 627	101 513	8 603	7 856	6 627
2013-14								
September	180 635	140 982	117 136	37 785	103 625	8 749	7 968	6 490
December	184 476	141 747	117 978	38 615	106 118	8 762	7 960	6 465
March	187 725	142 273	118 404	38 643	107 797	8 622	7 842	6 346
June	189 622	142 701	118 146	38 128	107 712	8 397	7 787	6 177
2014-15								
September	190 662	143 321	117 660	37 675	106 712	8 249	7 748	6 022
December	191 177	143 949	117 160	37 392	105 418	8 188	7 740	5 891

(a) State sales data should be used with caution. See paragraph 13 of the Technical Note.

SALES OF GOODS AND SERVICES BY STATE(a), Current prices - Percentage change from previous quarter

	<i>New South Wales</i>	<i>Victoria</i>	<i>Queensland</i>	<i>South Australia</i>	<i>Western Australia</i>	<i>Tasmania(b)</i>	<i>Northern Territory(b)</i>	<i>Australian Capital Territory(b)</i>
	%	%	%	%	%	%	%	%
ORIGINAL								
2012-13								
December	3.7	6.1	3.9	2.6	3.8	2.3	6.9	8.5
March	-8.8	-9.9	-12.0	-7.3	-6.1	1.4	-14.4	-17.3
June	6.6	5.2	7.2	6.5	6.2	-2.5	18.2	9.4
2013-14								
September	3.0	1.8	2.8	3.3	1.5	1.0	5.5	-3.3
December	4.3	4.6	3.4	7.2	5.8	7.6	-0.8	0.4
March	-5.6	-9.7	-10.3	-8.6	-5.0	-4.9	-11.8	-11.5
June	5.4	6.1	6.1	4.3	4.6	-6.3	5.2	11.8
2014-15								
September	1.4	1.2	1.5	-4.2	-2.1	-1.3	1.0	-9.7
December	3.2	4.7	3.8	6.1	2.2	5.9	9.7	3.2
SEASONALLY ADJUSTED								
2012-13								
December	0.8	1.8	1.1	-1.9	0.8	-3.1	4.9	7.1
March	-0.4	-0.3	-0.5	0.3	1.0	4.4	-0.7	-9.2
June	1.3	-0.5	-0.1	1.8	1.4	-1.1	11.8	-2.9
2013-14								
September	2.1	1.4	0.4	4.5	1.7	2.2	-1.7	0.9
December	1.3	0.3	0.4	2.3	2.8	1.8	-3.1	-1.6
March	3.0	0.1	1.4	-0.9	2.1	-2.1	2.5	-2.2
June	0.3	0.3	-1.0	-0.4	-0.2	-4.9	-0.4	-1.3
2014-15								
September	0.5	0.6	-0.9	-3.0	-1.8	-0.1	-5.9	-5.3
December	0.3	0.3	0.5	1.2	-0.7	0.2	6.9	0.5
TREND								
2012-13								
December	-0.5	0.5	0.6	-0.9	1.0	-0.9	4.6	-3.3
March	0.4	0.2	0.2	0.2	0.8	0.4	5.3	-3.5
June	1.1	0.3	-0.1	2.2	1.4	1.7	3.4	-2.7
2013-14								
September	1.7	0.4	0.3	3.2	2.1	1.7	1.4	-2.1
December	2.1	0.5	0.7	2.2	2.4	0.2	-0.1	-0.4
March	1.8	0.4	0.4	0.1	1.6	-1.6	-1.5	-1.8
June	1.0	0.3	-0.2	-1.3	-0.1	-2.6	-0.7	-2.7
2014-15								
September	0.5	0.4	-0.4	-1.2	-0.9	-1.8	-0.5	-2.5
December	0.3	0.4	-0.4	-0.8	-1.2	-0.7	-0.1	-2.2

(a) State sales data should be used with caution. See paragraph 13 of the Technical Note.

(b) The relative standard error on the movement estimates for these states are significantly higher than those for the larger states, and the quarterly movement estimates should be used with caution.

COMPANY PROFITS BEFORE INCOME TAX, Current prices

	Mining	Manufacturing	Electricity, gas, water and waste services	Construction	Wholesale trade	Retail trade	Accommodation and food services	Transport, postal and warehousing
	\$m	\$m	\$m	\$m	\$m	\$m	\$m	\$m
ORIGINAL								
2012-13								
December	8 317	3 147	1 157	3 970	4 298	4 982	1 441	3 253
March	11 821	2 247	970	^ 3 098	3 672	2 486	862	2 509
June	14 562	^ 1 155	1 198	4 037	4 078	2 972	^ 638	2 487
2013-14								
September	15 075	6 001	1 784	3 732	^ 2 916	2 789	957	2 458
December	14 323	4 016	^ 607	4 649	3 629	4 904	934	2 775
March	13 436	4 266	1 384	3 138	^ 2 725	2 786	936	1 688
June	10 461	3 109	1 314	4 437	3 860	2 306	844	1 320
2014-15								
September	11 862	4 977	1 953	4 715	3 598	2 687	1 262	1 717
December	3 965	3 946	1 119	4 825	3 826	5 003	1 161	2 777
SEASONALLY ADJUSTED								
2012-13								
December	9 291	3 042	1 504	3 532	3 920	3 322	1 276	2 645
March	12 413	2 627	1 105	3 923	4 174	3 161	896	3 019
June	13 730	1 276	1 215	4 000	4 088	3 380	884	2 743
2013-14								
September	13 692	4 967	1 304	3 462	2 777	3 362	832	2 392
December	16 370	3 885	787	4 152	3 261	3 252	785	2 242
March	13 877	4 997	1 573	3 975	3 227	3 533	967	2 040
June	9 894	3 458	1 350	4 350	3 856	2 652	1 090	1 451
2014-15								
September	10 786	4 097	1 417	4 413	3 461	3 231	1 126	1 679
December	4 565	3 820	1 457	4 306	3 476	3 310	1 026	2 240
TREND								
2012-13								
December	11 092	3 060	1 270	3 662	4 113	3 221	1 071	2 894
March	11 551	2 888	1 284	3 778	4 054	3 270	1 005	2 835
June	13 310	2 903	1 183	3 841	3 716	3 305	880	2 717
2013-14								
September	14 907	3 462	1 116	3 823	3 283	3 377	804	2 508
December	14 876	4 021	1 172	3 898	3 127	3 346	849	2 197
March	13 802	4 246	1 280	4 111	3 344	3 186	952	1 873
June	11 384	4 118	1 402	4 285	3 571	3 086	1 054	1 697
2014-15								
September	8 658	3 899	1 451	4 350	3 577	3 101	1 094	1 765
December	6 731	3 732	1 421	4 384	3 528	3 192	1 079	1 928

^ estimate has a relative standard error of 10% to less than 25% and should be used with caution

COMPANY PROFITS BEFORE INCOME TAX, Current prices *continued*

	Information media and tele- communications	Financial and insurance services(a)	Rental, hiring and real estate services	Professional, scientific and technical services	Administrative and support services	Arts and recreation services	Other services	Total
	\$m	\$m	\$m	\$m	\$m	\$m	\$m	\$m
ORIGINAL								
2012-13								
December	3 250	^ 2 648	3 708	3 784	**127	784	^ 531	45 397
March	2 317	2 645	3 091	^ 2 444	**124	^ 534	^ 620	39 441
June	996	*-671	3 145	^ 4 258	**10	^ 456	^ 347	39 669
2013-14								
September	2 133	3 349	3 217	^ 2 803	^ 433	829	928	49 404
December	2 375	^ 1 855	4 309	5 254	**141	793	^ 570	51 133
March	3 143	2 599	3 482	^ 1 310	^ 547	824	^ 739	43 004
June	1 922	1 929	3 934	*1 919	**160	^ 403	^ 124	38 042
2014-15								
September	2 004	^ 812	3 787	3 658	^ 974	893	999	45 899
December	2 435	2 574	5 385	^ 2 999	^ 743	1 023	^ 637	42 421
SEASONALLY ADJUSTED								
2012-13								
December	3 170	2 648	2 943	3 235	85	664	561	41 840
March	2 316	2 645	3 513	3 161	121	602	579	44 255
June	915	-671	3 257	4 668	206	596	614	40 901
2013-14								
September	2 294	3 349	3 455	2 221	273	743	664	45 788
December	2 309	1 855	3 549	4 677	117	665	611	48 519
March	3 124	2 599	3 896	2 056	533	895	696	47 988
June	1 841	1 929	4 031	2 365	360	551	392	39 568
2014-15								
September	2 167	812	4 033	3 041	808	803	729	42 602
December	2 378	2 574	4 643	2 403	729	892	686	38 504
TREND								
2012-13								
December	2 092	2 524	3 221	3 084	80	625	577	42 586
March	2 315	1 858	3 263	3 534	132	621	588	42 977
June	2 366	1 402	3 347	3 710	177	630	612	44 099
2013-14								
September	2 467	1 769	3 450	3 639	220	694	636	46 154
December	2 539	2 383	3 608	3 235	264	741	651	46 907
March	2 480	2 316	3 809	2 811	369	730	671	45 980
June	2 323	1 771	4 004	2 613	525	725	692	43 249
2014-15								
September	2 185	1 703	4 222	2 517	670	767	705	40 663
December	2 148	1 793	4 407	2 698	763	828	702	39 334
<p>^ estimate has a relative standard error of 10% to less than 25% and should be used with caution</p> <p>* estimate has a relative standard error of 25% to 50% and should be used with caution</p> <p>** estimate has a relative standard error greater than 50% and is considered too unreliable for general use</p> <p>(a) See paragraph 7 of Explanatory Notes for limited scope and coverage of this industry</p>								

	Mining	Manufacturing	Electricity, gas, water and waste services	Construction	Wholesale trade	Retail trade	Accommodation and food services	Transport, postal and warehousing
	%	%	%	%	%	%	%	%
ORIGINAL								
2012-13								
December	-37.1	-27.9	-26.4	9.0	0.0	92.0	35.2	7.6
March	42.1	-28.6	-16.1	-22.0	-14.6	-50.1	-40.2	-22.9
June	23.2	-48.6	23.5	30.3	11.0	19.6	-25.9	-0.9
2013-14								
September	3.5	419.8	48.9	-7.5	-28.5	-6.2	50.0	-1.2
December	-5.0	-33.1	-66.0	24.6	24.5	75.8	-2.5	12.9
March	-6.2	6.2	128.2	-32.5	-24.9	-43.2	0.3	-39.2
June	-22.1	-27.1	-5.1	41.4	41.6	-17.2	-9.8	-21.8
2014-15								
September	13.4	60.1	48.6	6.3	-6.8	16.5	49.5	30.1
December	-66.6	-20.7	-42.7	2.3	6.3	86.2	-8.0	61.7
SEASONALLY ADJUSTED								
2012-13								
December	-23.5	-16.6	29.7	5.5	-5.8	6.2	33.5	-9.5
March	33.6	-13.7	-26.5	11.1	6.5	-4.9	-29.8	14.1
June	10.6	-51.4	9.9	2.0	-2.1	6.9	-1.3	-9.1
2013-14								
September	-0.3	289.3	7.3	-13.5	-32.1	-0.5	-5.9	-12.8
December	19.6	-21.8	-39.6	19.9	17.4	-3.3	-5.7	-6.3
March	-15.2	28.6	99.8	-4.3	-1.0	8.6	23.2	-9.0
June	-28.7	-30.8	-14.2	9.4	19.5	-24.9	12.8	-28.9
2014-15								
September	9.0	18.5	5.0	1.5	-10.2	21.8	3.3	15.7
December	-57.7	-6.8	2.9	-2.4	0.4	2.4	-8.9	33.4
TREND								
2012-13								
December	-6.4	-4.2	-0.7	6.9	1.5	-0.1	1.3	1.3
March	4.1	-5.6	1.1	3.2	-1.4	1.5	-6.2	-2.0
June	15.2	0.5	-7.9	1.7	-8.3	1.1	-12.4	-4.2
2013-14								
September	12.0	19.3	-5.7	-0.4	-11.7	2.2	-8.7	-7.7
December	-0.2	16.1	5.1	1.9	-4.7	-0.9	5.7	-12.4
March	-7.2	5.6	9.1	5.5	6.9	-4.8	12.1	-14.8
June	-17.5	-3.0	9.6	4.2	6.8	-3.2	10.7	-9.4
2014-15								
September	-23.9	-5.3	3.5	1.5	0.2	0.5	3.7	4.0
December	-22.3	-4.3	-2.0	0.8	-1.4	2.9	-1.4	9.2

	Information media and tele- communications	Financial and insurance services(a)	Rental, hiring and real estate services	Professional, scientific and technical services	Administrative and support services	Arts and recreation services	Other services	Total
	%	%	%	%	%	%	%	%
ORIGINAL								
2012-13								
December	83.0	-19.6	18.2	29.0	-42.3	12.2	-37.3	-2.8
March	-28.7	-0.1	-16.6	-35.4	-2.7	-31.9	16.8	-13.1
June	-57.0	-125.4	1.8	74.2	-91.6	-14.5	-44.0	0.6
2013-14								
September	114.1	598.9	2.3	-34.2	4 060.7	81.6	167.5	24.5
December	11.3	-44.6	34.0	87.5	-67.5	-4.3	-38.6	3.5
March	32.3	40.1	-19.2	-75.1	288.7	3.9	29.7	-15.9
June	-38.8	-25.8	13.0	46.4	-70.8	-51.1	-83.3	-11.5
2014-15								
September	4.3	-57.9	-3.7	90.6	510.8	121.6	707.2	20.7
December	21.5	217.0	42.2	-18.0	-23.8	14.5	-36.3	-7.6
SEASONALLY ADJUSTED								
2012-13								
December	64.2	-19.6	-11.6	35.1	11.0	6.7	-5.6	-4.3
March	-26.9	-0.1	19.4	-2.3	42.5	-9.4	3.2	5.8
June	-60.5	-125.4	-7.3	47.7	69.3	-1.0	6.2	-7.6
2013-14								
September	150.8	598.9	6.1	-52.4	33.0	24.8	8.1	11.9
December	0.7	-44.6	2.7	110.6	-57.3	-10.5	-8.0	6.0
March	35.3	40.1	9.8	-56.0	357.2	34.6	13.9	-1.1
June	-41.1	-25.8	3.5	15.0	-32.6	-38.5	-43.7	-17.5
2014-15								
September	17.7	-57.9	0.1	28.6	124.7	45.7	86.0	7.7
December	9.7	217.0	15.1	-21.0	-9.8	11.1	-5.9	-9.6
TREND								
2012-13								
December	12.2	-12.6	-0.5	36.5	-45.2	-1.7	0.6	0.1
March	10.7	-26.4	1.3	14.6	65.7	-0.6	2.0	0.9
June	2.2	-24.5	2.6	5.0	33.8	1.4	3.9	2.6
2013-14								
September	4.3	26.2	3.1	-1.9	24.3	10.1	4.0	4.7
December	2.9	34.7	4.6	-11.1	20.0	6.8	2.3	1.6
March	-2.3	-2.8	5.6	-13.1	39.8	-1.4	3.1	-2.0
June	-6.3	-23.6	5.1	-7.0	42.5	-0.7	3.2	-5.9
2014-15								
September	-5.9	-3.8	5.5	-3.7	27.5	5.8	1.8	-6.0
December	-1.7	5.3	4.4	7.2	14.0	8.0	-0.4	-3.3

(a) See paragraph 7 of Explanatory Notes for limited scope and coverage of this industry

	Mining	Manufacturing	Electricity, gas, water and waste services	Construction	Wholesale trade	Retail trade	Accommodation and food services	Transport, postal and warehousing
	\$m	\$m	\$m	\$m	\$m	\$m	\$m	\$m
ORIGINAL								
2012-13								
December	17 208	6 717	2 542	4 527	5 080	5 684	*1 586	5 825
March	18 001	5 459	2 389	^ 3 612	4 464	3 207	1 272	4 908
June	20 016	5 934	2 681	4 890	4 652	3 805	1 048	4 916
2013-14								
September	23 599	7 954	3 412	4 552	4 615	3 582	1 406	5 064
December	23 674	6 811	2 789	5 309	5 795	5 724	1 363	5 216
March	22 739	5 535	2 862	3 826	4 606	3 546	1 422	4 042
June	19 772	6 322	3 014	5 284	4 682	3 749	1 362	4 234
2014-15								
September	20 054	7 612	3 462	5 222	4 945	3 544	1 782	4 490
December	18 928	7 493	2 543	5 510	4 933	5 876	1 794	5 493
SEASONALLY ADJUSTED								
2012-13								
December	17 217	6 293	2 741	4 055	4 662	4 085	1 406	5 211
March	18 957	6 118	2 603	4 535	4 930	3 921	1 326	5 409
June	20 214	6 110	2 691	4 651	4 836	4 106	1 234	5 092
2013-14								
September	22 352	7 452	2 944	4 385	4 433	4 162	1 328	5 040
December	23 549	6 339	3 001	4 753	5 323	4 095	1 204	4 634
March	23 891	6 230	3 122	4 827	5 033	4 330	1 480	4 462
June	20 063	6 543	3 041	5 017	4 876	4 057	1 607	4 396
2014-15								
September	18 973	7 093	2 972	5 013	4 773	4 116	1 680	4 471
December	18 996	7 016	2 754	4 975	4 566	4 229	1 594	4 895
TREND								
2012-13								
December	17 867	6 217	2 618	4 243	4 756	3 944	1 364	5 286
March	18 585	6 180	2 664	4 416	4 742	4 021	1 330	5 287
June	20 410	6 153	2 745	4 530	4 765	4 071	1 273	5 178
2013-14								
September	22 403	6 201	2 883	4 588	4 838	4 132	1 252	4 951
December	23 436	6 244	3 029	4 674	4 977	4 191	1 312	4 680
March	22 791	6 366	3 090	4 848	5 060	4 178	1 447	4 465
June	20 992	6 608	3 041	4 973	4 934	4 154	1 576	4 435
2014-15								
September	19 394	6 890	2 939	5 005	4 732	4 145	1 645	4 561
December	18 332	7 130	2 806	5 006	4 636	4 154	1 643	4 743

^ estimate has a relative standard error of 10% to less than 25% and should be used with caution

* estimate has a relative standard error of 25% to 50% and should be used with caution

	Information media and tele- communications	Financial and insurance services(a)	Rental, hiring and real estate services	Professional, scientific and technical services	Administrative and support services	Arts and recreation services	Other services	Total
	\$m	\$m	\$m	\$m	\$m	\$m	\$m	\$m
ORIGINAL								
2012-13								
December	4 753	^ 1 298	4 417	4 289	^ 323	1 007	^ 592	65 848
March	4 435	^ 820	4 095	3 316	**320	736	^ 724	57 758
June	4 956	^ 775	4 042	4 111	**321	700	^ 587	63 436
2013-14								
September	4 514	^ 640	4 202	3 812	^ 587	1 120	1 055	70 116
December	5 149	*411	4 603	^ 4 049	^ 435	1 033	^ 740	73 099
March	4 774	^ 803	4 297	^ 2 708	^ 740	1 066	^ 894	63 861
June	5 253	^ 921	4 426	^ 3 018	*442	660	^ 356	63 495
2014-15								
September	4 432	1 195	4 565	^ 3 016	^ 986	1 137	^ 867	67 308
December	4 943	*653	4 882	3 156	^ 809	1 302	**437	68 755
SEASONALLY ADJUSTED								
2012-13								
December	4 550	1 535	4 082	3 983	295	875	649	61 639
March	4 612	840	4 424	3 905	357	811	695	63 444
June	4 732	618	4 187	4 067	482	846	785	64 651
2013-14								
September	4 778	539	4 098	3 596	413	1 033	825	67 378
December	4 936	644	4 251	3 690	421	891	807	68 539
March	4 955	823	4 642	3 333	768	1 147	859	69 904
June	5 013	783	4 569	2 974	599	816	556	64 908
2014-15								
September	4 705	1 079	4 455	2 802	813	1 042	629	64 617
December	4 768	888	4 550	2 794	806	1 162	518	64 511
TREND								
2012-13								
December	4 560	1 298	4 234	3 966	343	835	673	62 134
March	4 630	985	4 237	3 994	362	845	710	63 060
June	4 708	659	4 200	3 912	399	878	766	65 004
2013-14								
September	4 811	555	4 193	3 779	449	952	828	67 318
December	4 920	635	4 314	3 577	516	997	829	68 687
March	4 965	765	4 495	3 305	613	979	764	68 202
June	4 913	877	4 560	3 049	706	976	668	66 410
2014-15								
September	4 818	943	4 538	2 841	764	1 024	582	64 826
December	4 744	967	4 503	2 730	798	1 087	516	63 670

^ estimate has a relative standard error of 10% to less than 25% and should be used with caution

* estimate has a relative standard error of 25% to 50% and should be used with caution

** estimate has a relative standard error greater than 50% and is considered too unreliable for general use

(a) See paragraph 7 of Explanatory Notes for limited scope and coverage of this industry

	Mining	Manufacturing	Electricity, gas, water and waste services	Construction	Wholesale trade	Retail trade	Accommodation and food services	Transport, postal and warehousing
	%	%	%	%	%	%	%	%
ORIGINAL								
2012-13								
December	-9.3	-0.2	-12.8	6.0	4.8	73.2	7.8	10.6
March	4.6	-18.7	-6.0	-20.2	-12.1	-43.6	-19.8	-15.7
June	11.2	8.7	12.3	35.4	4.2	18.6	-17.6	0.2
2013-14								
September	17.9	34.1	27.2	-6.9	-0.8	-5.8	34.2	3.0
December	0.3	-14.4	-18.3	16.6	25.6	59.8	-3.1	3.0
March	-3.9	-18.7	2.6	-27.9	-20.5	-38.0	4.4	-22.5
June	-13.0	14.2	5.3	38.1	1.7	5.7	-4.3	4.7
2014-15								
September	1.4	20.4	14.9	-1.2	5.6	-5.5	30.9	6.1
December	-5.6	-1.6	-26.5	5.5	-0.2	65.8	0.7	22.3
SEASONALLY ADJUSTED								
2012-13								
December	-4.1	-0.7	8.3	-1.8	0.8	7.4	1.5	-0.5
March	10.1	-2.8	-5.0	11.9	5.8	-4.0	-5.7	3.8
June	6.6	-0.1	3.4	2.5	-1.9	4.7	-6.9	-5.9
2013-14								
September	10.6	22.0	9.4	-5.7	-8.3	1.4	7.6	-1.0
December	5.4	-14.9	1.9	8.4	20.1	-1.6	-9.3	-8.1
March	1.5	-1.7	4.0	1.6	-5.4	5.8	23.0	-3.7
June	-16.0	5.0	-2.6	3.9	-3.1	-6.3	8.5	-1.5
2014-15								
September	-5.4	8.4	-2.2	-0.1	-2.1	1.4	4.6	1.7
December	0.1	-1.1	-7.3	-0.8	-4.3	2.8	-5.1	9.5
TREND								
2012-13								
December	-2.0	0.1	0.4	5.3	-0.6	0.8	-2.4	1.0
March	4.0	-0.6	1.7	4.1	-0.3	2.0	-2.5	0.0
June	9.8	-0.4	3.1	2.6	0.5	1.2	-4.2	-2.1
2013-14								
September	9.8	0.8	5.0	1.3	1.5	1.5	-1.7	-4.4
December	4.6	0.7	5.1	1.9	2.9	1.4	4.8	-5.5
March	-2.8	2.0	2.0	3.7	1.7	-0.3	10.3	-4.6
June	-7.9	3.8	-1.6	2.6	-2.5	-0.6	8.9	-0.7
2014-15								
September	-7.6	4.3	-3.4	0.6	-4.1	-0.2	4.4	2.8
December	-5.5	3.5	-4.5	0.0	-2.0	0.2	-0.1	4.0

	Information media and tele- communications	Financial and insurance services(a)	Rental, hiring and real estate services	Professional, scientific and technical services	Administrative and support services	Arts and recreation services	Other services	Total
	%	%	%	%	%	%	%	%
ORIGINAL								
2012-13								
December	9.4	-10.5	2.3	6.4	-42.7	9.6	-33.7	2.4
March	-6.7	-36.8	-7.3	-22.7	-0.9	-27.0	22.3	-12.3
June	11.8	-5.5	-1.3	24.0	0.4	-4.8	-18.9	9.8
2013-14								
September	-8.9	-17.4	4.0	-7.3	82.6	59.9	79.7	10.5
December	14.1	-35.9	9.5	6.2	-26.0	-7.8	-29.8	4.3
March	-7.3	95.6	-6.6	-33.1	70.3	3.2	20.8	-12.6
June	10.0	14.7	3.0	11.5	-40.2	-38.1	-60.3	-0.6
2014-15								
September	-15.6	29.7	3.1	-0.1	122.8	72.4	143.8	6.0
December	11.5	-45.3	6.9	4.7	-17.9	14.5	-49.6	2.1
SEASONALLY ADJUSTED								
2012-13								
December	-0.6	11.6	-2.9	4.6	-24.0	3.7	-3.2	-0.4
March	1.4	-45.3	8.4	-2.0	21.1	-7.3	7.2	2.9
June	2.6	-26.4	-5.4	4.2	34.8	4.3	12.9	1.9
2013-14								
September	1.0	-12.8	-2.1	-11.6	-14.3	22.1	5.2	4.2
December	3.3	19.4	3.8	2.6	2.1	-13.8	-2.2	1.7
March	0.4	27.9	9.2	-9.7	82.3	28.7	6.5	2.0
June	1.2	-4.9	-1.6	-10.8	-22.0	-28.8	-35.3	-7.1
2014-15								
September	-6.1	37.8	-2.5	-5.8	35.6	27.7	13.2	-0.4
December	1.3	-17.6	2.1	-0.3	-0.9	11.5	-17.8	-0.2
TREND								
2012-13								
December	0.6	-7.5	0.3	6.4	-20.5	-2.7	4.2	-0.2
March	1.5	-24.2	0.1	0.7	5.6	1.3	5.5	1.5
June	1.7	-33.1	-0.9	-2.0	10.3	3.8	7.9	3.1
2013-14								
September	2.2	-15.8	-0.2	-3.4	12.5	8.5	8.2	3.6
December	2.3	14.5	2.9	-5.3	14.7	4.7	0.0	2.0
March	0.9	20.4	4.2	-7.6	18.9	-1.8	-7.8	-0.7
June	-1.1	14.7	1.4	-7.7	15.1	-0.3	-12.5	-2.6
2014-15								
September	-1.9	7.4	-0.5	-6.8	8.3	4.9	-12.8	-2.4
December	-1.5	2.6	-0.8	-3.9	4.5	6.2	-11.3	-1.8

(a) See paragraph 7 of Explanatory Notes for limited scope and coverage of this industry

	Mining	Manufacturing	Electricity, gas, water and waste services	Construction	Wholesale trade	Retail trade	Accommodation and food services	Transport, postal and warehousing
	\$m	\$m	\$m	\$m	\$m	\$m	\$m	\$m
ORIGINAL								
2012-13								
December	*30	^ 589	**2	^ 1 749	^ 483	1 706	^ 989	^ 525
March	*72	^ 499	**26	^ 1 484	^ 441	1 040	^ 665	^ 444
June	**37	^ 507	**51	^ 1 731	^ 392	1 124	601	^ 435
2013-14								
September	**8	^ 692	**29	^ 1 150	^ 457	1 205	^ 752	^ 524
December	**17	^ 633	^ 66	^ 1 575	^ 472	^ 1 520	^ 696	^ 590
March	**1	^ 491	^ 80	^ 1 179	^ 388	1 063	^ 617	489
June	**32	^ 582	^ 117	^ 2 001	^ 352	^ 767	597	^ 533
2014-15								
September	**24	^ 585	*90	^ 1 552	^ 581	^ 926	787	^ 491
December	^ 31	^ 524	**50	^ 1 321	^ 699	^ 1 184	^ 940	^ 517
SEASONALLY ADJUSTED								
2012-13								
December	30	546	3	1 635	428	1 328	830	476
March	72	616	26	1 781	475	1 173	693	525
June	37	501	46	1 617	484	1 307	721	430
2013-14								
September	8	630	27	1 075	400	1 255	739	501
December	17	589	82	1 475	424	1 171	585	539
March	1	599	79	1 477	418	1 204	643	574
June	32	580	103	1 869	432	892	720	528
2014-15								
September	24	530	88	1 485	507	970	770	468
December	31	490	62	1 225	632	905	790	477
TREND								
2012-13								
December	28	556	18	1 690	495	1 247	756	488
March	53	560	22	1 676	462	1 257	748	482
June	42	573	33	1 510	446	1 259	720	477
2013-14								
September	20	585	49	1 337	433	1 255	676	497
December	8	600	67	1 371	411	1 209	646	536
March	13	600	87	1 575	412	1 103	648	554
June	21	569	93	1 646	455	1 006	703	526
2014-15								
September	27	535	84	1 524	519	934	762	491
December	33	501	75	1 362	578	892	795	462
^ estimate has a relative standard error of 10% to less than 25% and should be used with caution * estimate has a relative standard error of 25% to 50% and should be used with caution ** estimate has a relative standard error greater than 50% and is considered too unreliable for general use								

	Information media and telecom.	Financial and insurance services(a)	Rental, hiring and real estate services	Professional, scientific and technical services	Administrative and support services	Arts and recreation services	Other services	Total
	\$m	\$m	\$m	\$m	\$m	\$m	\$m	\$m
ORIGINAL								
2012-13								
December	**32	^ 410	3 228	^ 1 231	**63	^ 80	^ 353	11 470
March	*56	*165	3 400	^ 834	*94	**5	^ 574	9 799
June	*52	*180	3 014	^ 1 099	*20	** -16	^ 340	9 566
2013-14								
September	*28	**9	3 486	^ 970	*122	^ 103	^ 509	10 043
December	*54	**40	3 437	^ 1 043	^ 162	^ 105	^ 304	10 716
March	*61	** -58	3 537	^ 774	^ 209	^ 143	^ 573	9 546
June	*115	*92	3 716	^ 1 193	^ 197	** -47	^ 296	10 545
2014-15								
September	*70	** -2	3 237	^ 1 210	^ 257	**57	^ 611	10 475
December	*40	** -7	3 258	^ 1 036	^ 243	^ 202	^ 326	10 363
SEASONALLY ADJUSTED								
2012-13								
December	32	351	3 200	1 142	39	30	409	10 477
March	56	254	3 423	1 129	66	10	501	10 800
June	52	148	3 109	997	76	17	475	10 017
2013-14								
September	28	7	3 393	860	116	117	393	9 551
December	54	-15	3 423	963	141	49	367	9 864
March	61	32	3 553	1 067	176	151	494	10 530
June	115	57	3 796	1 090	259	-10	414	10 877
2014-15								
September	70	-5	3 152	1 099	247	69	469	9 944
December	40	-58	3 255	958	225	142	401	9 575
TREND								
2012-13								
December	44	360	3 272	1 150	57	8	435	10 606
March	44	260	3 262	1 099	62	20	461	10 468
June	45	131	3 276	991	79	41	455	10 077
2013-14								
September	41	35	3 317	928	108	76	420	9 778
December	51	3	3 472	955	146	95	407	9 976
March	75	21	3 597	1 044	194	75	433	10 430
June	85	28	3 534	1 084	229	59	449	10 489
2014-15								
September	75	1	3 383	1 061	245	73	440	10 155
December	58	-41	3 229	1 011	243	97	418	9 714
^	estimate has a relative standard error of 10% to less than 25% and should be used with caution			** estimate has a relative standard error greater than 50% and is considered too unreliable for general use				
*	estimate has a relative standard error of 25% to 50% and should be used with caution			(a) See paragraph 7 of Explanatory Notes for limited scope and coverage of this industry				

	Mining	Manufacturing	Electricity, gas, water and waste services	Construction	Wholesale trade	Retail trade	Accommodation and food services	Transport, postal and warehousing
	%	%	%	%	%	%	%	%
ORIGINAL								
2012-13								
December	594.4	2.7	-94.1	5.2	-29.9	50.0	32.2	6.9
March	139.2	-15.4	1 024.5	-15.1	-8.7	-39.1	-32.8	-15.4
June	-48.9	1.7	94.9	16.6	-11.1	8.1	-9.5	-2.0
2013-14								
September	-77.3	36.4	-44.2	-33.5	16.5	7.2	25.1	20.3
December	103.1	-8.4	130.8	36.9	3.4	26.2	-7.5	12.6
March	-96.2	-22.5	21.9	-25.2	-17.7	-30.1	-11.4	-17.0
June	4 895.3	18.7	46.1	69.8	-9.4	-27.9	-3.2	9.0
2014-15								
September	-25.8	0.5	-23.3	-22.4	65.0	20.8	31.9	-8.0
December	27.6	-10.5	-44.3	-14.9	20.4	27.8	19.4	5.2
SEASONALLY ADJUSTED								
2012-13								
December	594.4	4.1	-92.2	4.2	-29.7	12.8	12.3	1.3
March	139.2	12.8	823.4	8.9	11.2	-11.7	-16.5	10.4
June	-48.9	-18.6	73.9	-9.2	1.7	11.5	4.0	-18.1
2013-14								
September	-77.3	25.8	-40.6	-33.6	-17.4	-4.0	2.5	16.5
December	103.1	-6.5	201.0	37.3	6.1	-6.7	-20.9	7.6
March	-96.2	1.7	-2.8	0.1	-1.3	2.9	9.9	6.4
June	4 895.3	-3.2	29.4	26.5	3.3	-26.0	12.0	-8.0
2014-15								
September	-25.8	-8.5	-14.4	-20.5	17.5	8.8	6.9	-11.5
December	27.6	-7.5	-29.8	-17.5	24.6	-6.7	2.6	1.9
TREND								
2012-13								
December	216.9	1.9	-21.9	9.5	-11.1	0.7	-3.4	4.2
March	91.3	0.7	20.3	-0.9	-6.8	0.7	-1.0	-1.3
June	-21.9	2.4	47.6	-9.9	-3.3	0.2	-3.7	-0.9
2013-14								
September	-52.7	2.1	48.8	-11.4	-2.9	-0.3	-6.1	4.2
December	-59.3	2.5	37.9	2.5	-5.1	-3.7	-4.4	7.9
March	58.2	0.0	30.4	14.9	0.1	-8.7	0.4	3.3
June	64.9	-5.3	6.5	4.5	10.5	-8.8	8.4	-5.1
2014-15								
September	30.2	-5.9	-9.1	-7.4	14.2	-7.2	8.4	-6.6
December	19.5	-6.5	-11.8	-10.6	11.3	-4.4	4.3	-6.0

	Information media and tele- communications	Financial and insurance services(a)	Rental, hiring and real estate services	Professional, scientific and technical services	Administrative and support services	Arts and recreation services	Other services	Total
	%	%	%	%	%	%	%	%
ORIGINAL								
2012-13								
December	-14.1	-2.7	-3.1	0.9	-41.0	463.1	-21.4	5.5
March	77.3	-59.6	5.3	-32.2	49.1	-93.5	62.4	-14.6
June	-7.7	8.7	-11.3	31.7	-79.2	-413.2	-40.7	-2.4
2013-14								
September	-45.7	-95.1	15.7	-11.7	520.2	729.4	49.7	5.0
December	90.0	354.5	-1.4	7.6	33.3	2.2	-40.2	6.7
March	13.1	-244.7	2.9	-25.8	28.6	35.7	88.3	-10.9
June	90.7	258.2	5.0	54.1	-5.4	-133.1	-48.3	10.5
2014-15								
September	-39.2	-102.6	-12.9	1.4	30.0	219.7	106.3	-0.7
December	-43.0	-187.5	0.6	-14.4	-5.5	256.8	-46.6	-1.1
SEASONALLY ADJUSTED								
2012-13								
December	-14.1	-16.9	-0.7	2.2	-62.1	543.0	16.1	1.1
March	77.3	-27.6	7.0	-1.2	67.5	-65.5	22.5	3.1
June	-7.7	-41.6	-9.2	-11.7	15.0	66.5	-5.3	-7.3
2013-14								
September	-45.7	-95.0	9.1	-13.7	53.0	589.8	-17.2	-4.7
December	90.0	-297.4	0.9	12.0	21.6	-58.6	-6.5	3.3
March	13.1	320.3	3.8	10.8	24.9	210.2	34.4	6.7
June	90.7	76.6	6.8	2.2	46.5	-106.9	-16.2	3.3
2014-15								
September	-39.2	-108.6	-17.0	0.8	-4.5	761.6	13.3	-8.6
December	-43.0	-1 081.2	3.3	-12.8	-8.8	106.2	-14.6	-3.7
TREND								
2012-13								
December	-6.0	-3.5	1.2	7.9	-18.7	10.5	10.3	2.7
March	1.2	-27.9	-0.3	-4.5	8.5	142.1	5.9	-1.3
June	3.1	-49.6	0.4	-9.9	26.7	99.1	-1.5	-3.7
2013-14								
September	-10.2	-73.2	1.3	-6.3	37.3	87.2	-7.7	-3.0
December	23.9	-91.3	4.7	2.9	34.1	24.4	-2.9	2.0
March	48.4	572.9	3.6	9.3	33.2	-20.7	6.2	4.6
June	14.0	36.5	-1.8	3.9	18.3	-20.9	3.9	0.6
2014-15								
September	-12.1	-96.3	-4.3	-2.1	6.7	22.5	-2.1	-3.2
December	-23.3	-3 959.7	-4.5	-4.7	-0.6	34.1	-5.0	-4.3

(a) See paragraph 7 of Explanatory Notes for limited scope and coverage of this industry

	Mining	Manufacturing	Electricity, gas, water and waste services	Construction	Wholesale trade	Retail trade	Accommodation and food services	Transport, postal and warehousing
	\$m	\$m	\$m	\$m	\$m	\$m	\$m	\$m
ORIGINAL								
2012-13								
December	17 238	7 306	2 545	6 275	5 562	7 391	^ 2 575	6 349
March	18 073	5 958	2 415	5 096	4 904	4 247	1 937	5 353
June	20 053	6 441	2 733	6 621	5 044	4 929	1 650	5 352
2013-14								
September	23 607	8 646	3 441	5 702	5 072	4 787	2 159	5 588
December	23 690	7 444	2 855	6 884	6 267	7 244	2 059	5 806
March	22 739	6 026	2 943	5 005	4 994	4 609	2 039	4 531
June	19 804	6 905	3 131	7 285	5 034	4 516	1 959	4 767
2014-15								
September	20 078	8 197	3 552	6 774	5 526	4 470	2 569	4 981
December	18 959	8 017	2 593	6 831	5 633	7 060	2 733	6 010
SEASONALLY ADJUSTED								
2012-13								
December	17 247	6 839	2 744	5 689	5 089	5 413	2 236	5 687
March	19 029	6 734	2 630	6 316	5 406	5 094	2 019	5 934
June	20 251	6 611	2 737	6 268	5 320	5 413	1 955	5 522
2013-14								
September	22 360	8 082	2 971	5 460	4 832	5 417	2 067	5 541
December	23 566	6 928	3 083	6 228	5 747	5 266	1 789	5 173
March	23 892	6 829	3 201	6 304	5 451	5 535	2 123	5 036
June	20 096	7 123	3 143	6 885	5 307	4 949	2 327	4 924
2014-15								
September	18 998	7 623	3 060	6 499	5 280	5 086	2 450	4 939
December	19 027	7 506	2 816	6 200	5 198	5 135	2 384	5 371
TREND								
2012-13								
December	17 895	6 773	2 637	5 934	5 252	5 191	2 120	5 775
March	18 639	6 740	2 686	6 092	5 204	5 278	2 078	5 769
June	20 451	6 727	2 778	6 040	5 211	5 330	1 994	5 656
2013-14								
September	22 423	6 786	2 932	5 925	5 271	5 387	1 928	5 449
December	23 444	6 844	3 096	6 045	5 388	5 400	1 958	5 216
March	22 803	6 966	3 177	6 422	5 472	5 281	2 095	5 019
June	21 013	7 177	3 134	6 620	5 388	5 160	2 279	4 961
2014-15								
September	19 422	7 425	3 023	6 529	5 252	5 079	2 407	5 052
December	18 364	7 631	2 880	6 368	5 214	5 047	2 438	5 205

^ estimate has a relative standard error of 10% to less than 25% and should be used with caution

(a) This is the sum of company and unincorporated gross operating profits.

	Information media and tele- communications	Financial and insurance services(b)	Rental, hiring and real estate services	Professional, scientific and technical services	Administrative and support services	Arts and recreation services	Other services	Total
	\$m	\$m	\$m	\$m	\$m	\$m	\$m	\$m
ORIGINAL								
2012-13								
December	4 784	^ 1 708	7 645	5 520	^ 386	1 087	^ 945	77 317
March	4 491	^ 986	7 494	4 150	*414	741	1 297	67 556
June	5 008	^ 955	7 056	5 210	**341	684	928	73 002
2013-14								
September	4 542	^ 649	7 688	4 782	^ 709	1 223	1 564	80 160
December	5 203	*451	8 040	5 093	^ 597	1 138	^ 1 045	83 815
March	4 835	^ 745	7 834	3 482	^ 949	1 209	1 468	73 407
June	5 369	^ 1 013	8 142	^ 4 212	^ 640	613	^ 652	74 039
2014-15								
September	4 502	1 192	7 803	4 226	1 242	1 194	^ 1 478	77 783
December	4 983	*647	8 140	4 192	^ 1 052	1 504	*763	79 118
SEASONALLY ADJUSTED								
2012-13								
December	4 582	1 886	7 281	5 126	335	905	1 058	72 116
March	4 668	1 094	7 846	5 033	424	821	1 197	74 244
June	4 784	767	7 296	5 064	558	863	1 259	74 668
2013-14								
September	4 806	547	7 491	4 456	529	1 151	1 218	76 929
December	4 990	629	7 674	4 654	563	940	1 174	78 403
March	5 015	856	8 195	4 401	945	1 298	1 353	80 434
June	5 128	840	8 366	4 064	858	806	970	75 784
2014-15								
September	4 775	1 074	7 608	3 901	1 060	1 111	1 099	74 561
December	4 808	830	7 806	3 752	1 031	1 304	918	74 086
TREND								
2012-13								
December	4 603	1 658	7 506	5 116	400	843	1 109	72 740
March	4 674	1 244	7 499	5 093	424	866	1 171	73 528
June	4 753	790	7 476	4 903	478	918	1 220	75 082
2013-14								
September	4 852	590	7 511	4 707	558	1 028	1 248	77 096
December	4 971	638	7 786	4 533	661	1 091	1 236	78 663
March	5 040	786	8 092	4 349	807	1 054	1 196	78 632
June	4 998	906	8 093	4 134	935	1 035	1 118	76 899
2014-15								
September	4 893	944	7 920	3 902	1 009	1 096	1 023	74 981
December	4 801	926	7 733	3 741	1 042	1 185	935	73 385

^ estimate has a relative standard error of 10% to less than 25% and should be used with caution

* estimate has a relative standard error of 25% to 50% and should be used with caution

** estimate has a relative standard error greater than 50% and is considered too unreliable for general use

(a) This is the sum of company and unincorporated gross operating profits.

(b) See paragraph 7 of Explanatory Notes for limited scope and coverage of this industry

	Mining	Manufacturing	Electricity, gas, water and waste services	Construction	Wholesale trade	Retail trade	Accommodation and food services	Transport, postal and warehousing
	%	%	%	%	%	%	%	%
ORIGINAL								
2012-13								
December	-9.2	0.0	-13.9	5.8	0.5	67.2	16.0	10.3
March	4.8	-18.5	-5.1	-18.8	-11.8	-42.5	-24.8	-15.7
June	11.0	8.1	13.1	29.9	2.8	16.0	-14.8	0.0
2013-14								
September	17.7	34.2	25.9	-13.9	0.6	-2.9	30.9	4.4
December	0.4	-13.9	-17.0	20.7	23.6	51.3	-4.6	3.9
March	-4.0	-19.1	3.1	-27.3	-20.3	-36.4	-1.0	-22.0
June	-12.9	14.6	6.4	45.6	0.8	-2.0	-3.9	5.2
2014-15								
September	1.4	18.7	13.4	-7.0	9.8	-1.0	31.2	4.5
December	-5.6	-2.2	-27.0	0.8	1.9	57.9	6.4	20.7
SEASONALLY ADJUSTED								
2012-13								
December	-3.9	-0.3	6.8	-0.2	-2.7	8.7	5.3	-0.3
March	10.3	-1.5	-4.2	11.0	6.2	-5.9	-9.7	4.3
June	6.4	-1.8	4.1	-0.8	-1.6	6.3	-3.2	-6.9
2013-14								
September	10.4	22.2	8.6	-12.9	-9.2	0.1	5.7	0.4
December	5.4	-14.3	3.8	14.1	18.9	-2.8	-13.4	-6.6
March	1.4	-1.4	3.8	1.2	-5.1	5.1	18.7	-2.6
June	-15.9	4.3	-1.8	9.2	-2.6	-10.6	9.6	-2.2
2014-15								
September	-5.5	7.0	-2.6	-5.6	-0.5	2.8	5.3	0.3
December	0.2	-1.5	-8.0	-4.6	-1.6	0.9	-2.7	8.8
TREND								
2012-13								
December	-1.8	0.2	0.2	6.5	-1.7	0.8	-2.8	1.3
March	4.2	-0.5	1.9	2.7	-0.9	1.7	-2.0	-0.1
June	9.7	-0.2	3.4	-0.9	0.1	1.0	-4.0	-2.0
2013-14								
September	9.6	0.9	5.6	-1.9	1.2	1.1	-3.3	-3.7
December	4.6	0.9	5.6	2.0	2.2	0.2	1.6	-4.3
March	-2.7	1.8	2.6	6.3	1.6	-2.2	7.0	-3.8
June	-7.9	3.0	-1.4	3.1	-1.5	-2.3	8.8	-1.2
2014-15								
September	-7.6	3.5	-3.5	-1.4	-2.5	-1.6	5.6	1.8
December	-5.4	2.8	-4.7	-2.5	-0.7	-0.6	1.3	3.0

(a) This is the sum of the company and unincorporated gross operating profits.

	Information media and tele- communications	Financial and insurance services(b)	Rental, hiring and real estate services	Professional, scientific and technical services	Administrative and support services	Arts and recreation services	Other services	Total
	%	%	%	%	%	%	%	%
ORIGINAL								
2012-13								
December	9.2	-8.7	0.0	5.1	-42.4	21.2	-29.6	2.9
March	-6.1	-42.3	-2.0	-24.8	7.3	-31.9	37.3	-12.6
June	11.5	-3.1	-5.9	25.5	-17.7	-7.6	-28.5	8.1
2013-14								
September	-9.3	-32.1	9.0	-8.2	107.8	78.8	68.7	9.8
December	14.5	-30.5	4.6	6.5	-15.8	-6.9	-33.2	4.6
March	-7.1	65.3	-2.6	-31.6	59.0	6.2	40.5	-12.4
June	11.0	36.0	3.9	21.0	-32.6	-49.3	-55.6	0.9
2014-15								
September	-16.1	17.7	-4.2	0.3	94.2	94.9	126.8	5.1
December	10.7	-45.8	4.3	-0.8	-15.3	26.0	-48.4	1.7
SEASONALLY ADJUSTED								
2012-13								
December	-0.7	4.9	-1.9	4.1	-32.1	8.1	3.4	-0.2
March	1.9	-42.0	7.8	-1.8	26.6	-9.2	13.1	3.0
June	2.5	-29.9	-7.0	0.6	31.8	5.1	5.2	0.6
2013-14								
September	0.5	-28.7	2.7	-12.0	-5.2	33.3	-3.3	3.0
December	3.8	15.1	2.5	4.4	6.4	-18.3	-3.6	1.9
March	0.5	36.0	6.8	-5.4	67.9	38.1	15.2	2.6
June	2.2	-1.8	2.1	-7.6	-9.2	-37.9	-28.3	-5.8
2014-15								
September	-6.9	27.8	-9.1	-4.0	23.5	37.9	13.3	-1.6
December	0.7	-22.7	2.6	-3.8	-2.7	17.4	-16.4	-0.6
TREND								
2012-13								
December	0.6	-6.7	0.7	6.8	-20.3	-2.6	6.5	0.2
March	1.5	-25.0	-0.1	-0.5	6.0	2.7	5.6	1.1
June	1.7	-36.5	-0.3	-3.7	12.7	6.1	4.2	2.1
2013-14								
September	2.1	-25.3	0.5	-4.0	16.6	12.0	2.3	2.7
December	2.4	8.2	3.7	-3.7	18.5	6.1	-1.0	2.0
March	1.4	23.1	3.9	-4.1	22.1	-3.5	-3.2	0.0
June	-0.8	15.2	0.0	-5.0	15.9	-1.8	-6.6	-2.2
2014-15								
September	-2.1	4.2	-2.1	-5.6	7.9	5.9	-8.5	-2.5
December	-1.9	-1.8	-2.4	-4.1	3.3	8.0	-8.6	-2.1

(a) This is the sum of the company and unincorporated gross operating profits.

(b) See paragraph 7 of Explanatory Notes for limited scope and coverage of this industry

	Mining	Manufacturing	Electricity, gas, water and waste services	Construction	Wholesale trade	Retail trade	Accom. and food services	Transport, postal and warehousing	Information media and telecom.
	\$m	\$m	\$m	\$m	\$m	\$m	\$m	\$m	\$m
ORIGINAL									
2012-13									
December	6 286	14 565	1 076	13 501	8 826	9 727	4 998	6 445	2 884
March	6 438	13 730	1 035	12 392	8 493	9 228	4 745	6 178	2 715
June	6 277	14 079	1 056	13 391	9 010	9 569	4 755	6 403	2 948
2013-14									
September	6 527	14 055	1 092	13 085	8 848	9 563	4 764	6 473	2 910
December	6 335	14 336	1 090	13 455	8 841	10 102	5 210	6 553	3 021
March	6 499	13 123	1 103	12 668	8 480	9 411	5 127	6 358	2 880
June	6 598	13 587	1 166	14 125	8 695	9 621	5 365	6 428	3 023
2014-15									
September	6 270	13 563	1 216	14 218	8 730	9 660	5 429	6 491	2 925
December	6 205	13 885	1 180	14 752	8 828	10 141	5 658	6 629	3 015
SEASONALLY ADJUSTED									
2012-13									
December	6 357	14 147	1 071	13 088	8 723	9 303	4 840	6 328	2 832
March	6 372	14 239	1 062	13 044	8 641	9 490	4 820	6 384	2 791
June	6 298	14 091	1 055	13 148	8 941	9 644	4 784	6 361	2 925
2013-14									
September	6 495	13 969	1 070	13 076	8 870	9 660	4 818	6 422	2 909
December	6 416	13 911	1 085	13 062	8 745	9 666	5 041	6 435	2 965
March	6 430	13 595	1 134	13 333	8 623	9 674	5 216	6 584	2 964
June	6 627	13 606	1 164	13 855	8 620	9 697	5 393	6 379	2 992
2014-15									
September	6 235	13 491	1 191	14 206	8 755	9 749	5 491	6 435	2 925
December	6 291	13 462	1 176	14 328	8 732	9 714	5 473	6 513	2 964
TREND									
2012-13									
December	6 390	14 080	1 065	13 145	8 656	9 284	4 860	6 365	2 822
March	6 356	14 166	1 064	13 109	8 757	9 491	4 817	6 355	2 833
June	6 372	14 135	1 060	13 066	8 852	9 617	4 789	6 387	2 881
2013-14									
September	6 404	14 016	1 068	13 060	8 850	9 667	4 862	6 411	2 926
December	6 462	13 809	1 093	13 131	8 756	9 673	5 019	6 410	2 960
March	6 492	13 685	1 130	13 395	8 655	9 681	5 220	6 394	2 970
June	6 450	13 578	1 162	13 786	8 658	9 704	5 370	6 398	2 967
2014-15									
September	6 370	13 504	1 180	14 135	8 701	9 723	5 461	6 437	2 956
December	6 267	13 458	1 188	14 410	8 749	9 736	5 518	6 491	2 954

	<i>Financial and insurance services</i>	<i>Rental, hiring and real estate services</i>	<i>Professional, scientific and technical services</i>	<i>Administrative and support services</i>	<i>Education and Training</i>	<i>Health Care and Social Assistance</i>	<i>Arts and recreation services</i>	<i>Other services</i>	<i>Total</i>
	\$m	\$m	\$m	\$m	\$m	\$m	\$m	\$m	\$m
ORIGINAL									
2012-13									
December	8 195	2 616	16 196	7 694	4 199	9 319	1 270	3 850	121 647
March	8 024	2 371	15 174	7 266	3 617	9 082	1 177	3 736	115 400
June	7 999	2 556	16 128	7 866	4 143	9 364	1 213	3 956	120 713
2013-14									
September	7 901	2 559	15 916	8 155	4 257	9 278	1 256	4 052	120 694
December	8 702	2 797	16 200	8 942	4 570	9 475	1 299	4 031	124 957
March	8 277	2 780	14 887	8 533	3 944	9 193	1 250	3 801	118 315
June	8 334	3 005	15 733	8 850	4 394	9 780	1 270	4 073	124 047
2014-15									
September	8 559	2 943	15 514	8 672	4 349	9 886	1 279	4 119	123 824
December	8 957	3 052	15 754	8 905	4 597	10 000	1 399	4 211	127 169
SEASONALLY ADJUSTED									
2012-13									
December	7 987	2 527	15 793	7 577	3 915	9 238	1 236	3 821	118 783
March	8 075	2 488	15 733	7 546	3 935	9 374	1 195	3 835	119 027
June	8 137	2 534	15 951	7 734	4 097	9 216	1 224	3 896	120 037
2013-14									
September	7 947	2 552	15 944	8 123	4 270	9 212	1 260	4 046	120 645
December	8 464	2 704	15 780	8 795	4 261	9 409	1 262	3 998	122 001
March	8 317	2 914	15 433	8 868	4 285	9 484	1 270	3 900	122 024
June	8 486	2 974	15 565	8 702	4 348	9 626	1 282	4 009	123 325
2014-15									
September	8 616	2 942	15 545	8 638	4 359	9 810	1 285	4 117	123 791
December	8 706	2 952	15 340	8 749	4 306	9 940	1 357	4 171	124 174
TREND									
2012-13									
December	7 842	2 497	15 636	7 590	3 841	9 243	1 219	3 798	118 332
March	7 971	2 497	15 840	7 576	3 983	9 273	1 217	3 845	119 151
June	8 073	2 519	15 934	7 783	4 113	9 268	1 227	3 930	120 006
2013-14									
September	8 161	2 586	15 917	8 214	4 214	9 271	1 247	3 982	120 856
December	8 265	2 726	15 740	8 634	4 280	9 353	1 265	3 981	121 557
March	8 393	2 870	15 431	8 814	4 310	9 496	1 269	3 967	122 173
June	8 497	2 948	15 682	8 763	4 329	9 643	1 280	4 008	123 222
2014-15									
September	8 591	2 964	15 483	8 695	4 340	9 791	1 305	4 093	123 730
December	8 704	2 952	15 339	8 676	4 339	9 930	1 335	4 176	124 223

	Mining	Manufacturing	Electricity, gas, water and waste services	Construction	Wholesale trade	Retail trade	Accom. and food services	Transport, postal and warehousing	Information media and telecom.
	%	%	%	%	%	%	%	%	%
ORIGINAL									
2012-13									
December	-2.9	4.4	-0.2	1.2	4.0	8.3	2.4	0.6	1.7
March	2.4	-5.7	-3.8	-8.2	-3.8	-5.1	-5.1	-4.1	-5.9
June	-2.5	2.5	2.0	8.1	6.1	3.7	0.2	3.6	8.6
2013-14									
September	4.0	-0.2	3.4	-2.3	-1.8	-0.1	0.2	1.1	-1.3
December	-2.9	2.0	-0.2	2.8	-0.1	5.6	9.3	1.2	3.8
March	2.6	-8.5	1.2	-5.8	-4.1	-6.8	-1.6	-3.0	-4.7
June	1.5	3.5	5.7	11.5	2.5	2.2	4.6	1.1	5.0
2014-15									
September	-5.0	-0.2	4.3	0.7	0.4	0.4	1.2	1.0	-3.3
December	-1.0	2.4	-3.0	3.8	1.1	5.0	4.2	2.1	3.1
SEASONALLY ADJUSTED									
2012-13									
December	-1.4	2.2	1.1	-1.8	2.5	2.5	-1.9	-0.6	0.1
March	0.2	0.6	-0.8	-0.3	-0.9	2.0	-0.4	0.9	-1.4
June	-1.2	-1.0	-0.7	0.8	3.5	1.6	-0.8	-0.4	4.8
2013-14									
September	3.1	-0.9	1.4	-0.5	-0.8	0.2	0.7	1.0	-0.5
December	-1.2	-0.4	1.4	-0.1	-1.4	0.1	4.6	0.2	1.9
March	0.2	-2.3	4.5	2.1	-1.4	0.1	3.5	2.3	0.0
June	3.1	0.1	2.7	3.9	0.0	0.2	3.4	-3.1	1.0
2014-15									
September	-5.9	-0.8	2.3	2.5	1.6	0.5	1.8	0.9	-2.2
December	0.9	-0.2	-1.3	0.9	-0.3	-0.4	-0.3	1.2	1.3
TREND									
2012-13									
December	-0.2	0.8	0.8	-0.3	0.8	2.2	0.5	-0.3	-1.0
March	-0.5	0.6	-0.1	-0.3	1.2	2.2	-0.9	-0.1	0.4
June	0.2	-0.2	-0.4	-0.3	1.1	1.3	-0.6	0.5	1.7
2013-14									
September	0.5	-0.8	0.8	0.0	0.0	0.5	1.5	0.4	1.6
December	0.9	-1.5	2.3	0.5	-1.1	0.1	3.2	0.0	1.2
March	0.5	-0.9	3.4	2.0	-1.1	0.1	4.0	-0.2	0.3
June	-0.7	-0.8	2.8	2.9	0.0	0.2	2.9	0.1	-0.1
2014-15									
September	-1.2	-0.6	1.6	2.5	0.5	0.2	1.7	0.6	-0.4
December	-1.6	-0.3	0.6	1.9	0.5	0.1	1.0	0.8	-0.1

	<i>Financial and insurance services</i>	<i>Rental, hiring and real estate services</i>	<i>Professional, scientific and technical services</i>	<i>Administrative and support services</i>	<i>Education and Training</i>	<i>Health Care and Social Assistance</i>	<i>Arts and recreation services</i>	<i>Other services</i>	<i>Total</i>
	%	%	%	%	%	%	%	%	%

ORIGINAL

2012-13									
December	5.9	6.5	6.1	-0.1	14.5	2.4	5.1	1.7	3.6
March	-2.1	-9.4	-6.3	-5.6	-13.9	-2.5	-7.3	-3.0	-5.1
June	-0.3	7.8	6.3	8.3	14.6	3.1	3.0	5.9	4.6
2013-14									
September	-1.2	0.1	-1.3	3.7	2.8	-0.9	3.6	2.4	0.0
December	10.1	9.3	1.8	9.7	7.3	2.1	3.4	-0.5	3.5
March	-4.9	-0.6	-8.1	-4.6	-13.7	-3.0	-3.7	-5.7	-5.3
June	0.7	8.1	5.7	3.7	11.4	6.4	1.6	7.1	4.8
2014-15									
September	2.7	-2.1	-1.4	-2.0	-1.0	1.1	0.7	1.1	-0.2
December	4.7	3.7	1.5	2.7	5.7	1.2	9.4	2.2	2.7

SEASONALLY ADJUSTED

2012-13									
December	2.7	3.6	3.2	-1.2	6.3	2.1	1.9	1.3	1.3
March	1.1	-1.5	-0.4	-0.4	0.5	1.5	-3.3	0.4	0.2
June	0.8	1.8	1.4	2.5	4.1	-1.7	2.4	1.6	0.8
2013-14									
September	-2.3	0.7	0.0	5.0	4.2	0.0	2.9	3.9	0.5
December	6.5	6.0	-1.0	8.3	-0.2	2.1	0.1	-1.2	1.1
March	-1.7	7.8	-2.2	0.8	0.6	0.8	0.6	-2.4	0.0
June	2.0	2.0	0.9	-1.9	1.5	1.5	0.9	2.8	1.1
2014-15									
September	1.5	-1.1	-0.1	-0.7	0.3	1.9	0.3	2.7	0.4
December	1.1	0.4	-1.3	1.3	-1.2	1.3	5.6	1.3	0.3

TREND

2012-13									
December	0.0	0.2	1.7	-0.2	3.1	1.1	0.9	-0.8	0.7
March	1.6	0.0	1.3	-0.2	3.7	0.3	-0.2	1.2	0.7
June	1.3	0.9	0.6	2.7	3.3	-0.1	0.8	2.2	0.7
2013-14									
September	1.1	2.7	-0.1	5.5	2.5	0.0	1.6	1.3	0.7
December	1.3	5.4	-1.1	5.1	1.6	0.9	1.5	0.0	0.6
March	1.6	5.3	-2.0	2.1	0.7	1.5	0.3	-0.4	0.5
June	1.2	2.7	1.6	-0.6	0.4	1.6	0.9	1.0	0.9
2014-15									
September	1.1	0.6	-1.3	-0.8	0.3	1.5	1.9	2.1	0.4
December	1.3	-0.4	-0.9	-0.2	0.0	1.4	2.3	2.0	0.4

	<i>New South Wales</i>	<i>Victoria</i>	<i>Queensland</i>	<i>South Australia</i>	<i>Western Australia</i>	<i>Tasmania</i>	<i>Northern Territory</i>	<i>Australian Capital Territory</i>	<i>Total</i>
	\$m	\$m	\$m	\$m	\$m	\$m	\$m	\$m	\$m
ORIGINAL									
2012-13									
December	38 654	30 136	22 838	7 202	17 872	1 744	1 175	2 027	121 647
March	36 931	28 485	21 811	6 693	16 924	1 716	1 031	1 808	115 400
June	38 854	29 504	22 815	7 027	17 606	1 764	1 230	^ 1 914	120 713
2013-14									
September	38 802	28 958	23 102	7 330	17 459	1 784	1 407	1 853	120 694
December	40 841	29 963	23 578	7 416	18 221	1 805	1 341	1 791	124 957
March	39 127	27 377	22 326	6 947	17 835	1 763	1 269	1 672	118 315
June	41 032	28 841	23 408	7 244	18 578	1 734	1 349	^ 1 861	124 047
2014-15									
September	40 727	28 592	23 710	7 352	18 481	1 753	1 504	1 705	123 824
December	42 045	29 635	23 988	7 642	18 847	1 845	1 505	1 663	127 169
SEASONALLY ADJUSTED									
2012-13									
December	37 724	29 233	22 329	7 039	17 534	1 714	1 134	2 022	118 783
March	38 025	29 399	22 625	6 904	17 425	1 735	1 133	1 878	119 027
June	38 480	29 393	22 692	7 028	17 447	1 757	1 225	1 863	120 037
2013-14									
September	39 033	29 078	22 921	7 275	17 452	1 803	1 338	1 842	120 645
December	39 855	29 048	23 061	7 239	17 878	1 774	1 293	1 782	122 001
March	40 263	28 253	23 139	7 182	18 370	1 781	1 396	1 742	122 024
June	40 648	28 730	23 307	7 245	18 397	1 730	1 350	1 805	123 325
2014-15									
September	40 980	28 728	23 512	7 290	18 479	1 770	1 423	1 698	123 791
December	41 025	28 713	23 466	7 454	18 495	1 812	1 452	1 652	124 174
TREND									
2012-13									
December	37 677	29 157	22 344	6 999	17 509	1 723	1 109	1 919	118 332
March	38 004	29 360	22 576	6 979	17 466	1 734	1 162	1 919	119 151
June	38 502	29 375	22 745	7 068	17 421	1 762	1 230	1 875	120 006
2013-14									
September	39 107	29 143	22 902	7 180	17 567	1 785	1 294	1 818	120 856
December	39 741	28 823	23 035	7 237	17 894	1 784	1 338	1 793	121 557
March	40 286	28 609	23 182	7 222	18 232	1 764	1 357	1 774	122 173
June	40 643	28 598	23 315	7 241	18 415	1 757	1 382	1 752	123 222
2014-15									
September	40 902	28 678	23 436	7 319	18 481	1 771	1 414	1 715	123 730
December	41 120	28 804	23 535	7 415	18 504	1 794	1 442	1 667	124 223

^ estimate has a relative standard error of 10% to less than 25% and should be used with caution

	New South Wales	Victoria	Queensland	South Australia	Western Australia	Tasmania(a)	Northern Territory(a)	Australian Capital Territory(a)	Total
	%	%	%	%	%	%	%	%	%
ORIGINAL									
2012-13									
December	3.8	5.0	2.3	1.9	2.7	1.8	6.1	10.2	3.6
March	-4.5	-5.5	-4.5	-7.1	-5.3	-1.6	-12.2	-10.8	-5.1
June	5.2	3.6	4.6	5.0	4.0	2.8	19.2	5.8	4.6
2013-14									
September	-0.1	-1.9	1.3	4.3	-0.8	1.1	14.4	-3.2	0.0
December	5.3	3.5	2.1	1.2	4.4	1.2	-4.7	-3.3	3.5
March	-4.2	-8.6	-5.3	-6.3	-2.1	-2.4	-5.4	-6.7	-5.3
June	4.9	5.4	4.8	4.3	4.2	-1.6	6.3	11.3	4.8
2014-15									
September	-0.7	-0.9	1.3	1.5	-0.5	1.1	11.5	-8.4	-0.2
December	3.2	3.6	1.2	4.0	2.0	5.2	0.1	-2.5	2.7
SEASONALLY ADJUSTED									
2012-13									
December	0.8	1.6	0.7	0.2	0.8	-1.1	7.2	11.0	1.3
March	0.8	0.6	1.3	-1.9	-0.6	1.2	-0.1	-7.1	0.2
June	1.2	0.0	0.3	1.8	0.1	1.2	8.1	-0.8	0.8
2013-14									
September	1.4	-1.1	1.0	3.5	0.0	2.7	9.2	-1.1	0.5
December	2.1	-0.1	0.6	-0.5	2.4	-1.6	-3.4	-3.2	1.1
March	1.0	-2.7	0.3	-0.8	2.8	0.4	7.9	-2.3	0.0
June	1.0	1.7	0.7	0.9	0.1	-2.9	-3.2	3.7	1.1
2014-15									
September	0.8	0.0	0.9	0.6	0.4	2.3	5.4	-5.9	0.4
December	0.1	-0.1	-0.2	2.3	0.1	2.4	2.0	-2.7	0.3
TREND									
2012-13									
December	0.1	0.9	1.1	-0.8	1.0	-0.9	2.8	1.8	0.7
March	0.9	0.7	1.0	-0.3	-0.2	0.6	4.8	0.0	0.7
June	1.3	0.1	0.7	1.3	-0.3	1.7	5.8	-2.3	0.7
2013-14									
September	1.6	-0.8	0.7	1.6	0.8	1.3	5.3	-3.0	0.7
December	1.6	-1.1	0.6	0.8	1.9	-0.1	3.3	-1.4	0.6
March	1.4	-0.7	0.6	-0.2	1.9	-1.1	1.5	-1.1	0.5
June	0.9	0.0	0.6	0.3	1.0	-0.4	1.8	-1.2	0.9
2014-15									
September	0.6	0.3	0.5	1.1	0.4	0.8	2.4	-2.1	0.4
December	0.5	0.4	0.4	1.3	0.1	1.3	2.0	-2.8	0.4

(a) The relative standard errors on movement estimates for these states are significantly higher than those of the larger states, and the quarterly movement estimates should be used with caution.

SALES/WAGES AND SALARIES RATIO(a)(b), Current prices - Original

	Mining	Manufacturing	Electricity, gas, water and waste services	Construction	Wholesale trade	Retail trade	Accommodation and food services	Transport, postal and warehousing
2012-13								
December	7.99	6.44	13.71	5.12	12.83	9.66	4.08	5.03
March	7.34	6.14	13.97	4.71	12.30	9.02	3.96	4.96
June	8.16	6.35	14.21	5.03	12.30	8.94	3.89	4.85
2013-14								
September	8.62	6.58	14.37	5.13	12.72	9.08	4.01	4.94
December	9.33	6.64	12.83	5.33	13.03	9.56	3.91	5.04
March	8.57	6.63	13.06	5.12	12.84	9.07	3.78	4.78
June	8.25	6.75	12.88	5.36	13.07	9.14	3.71	4.82
2014-15								
September	8.23	6.82	12.80	5.33	12.86	9.31	3.87	4.96
December	8.62	6.81	11.90	5.40	13.11	9.73	3.97	4.95

(a) Sales refer to Sales of goods and services.

(b) Ratio is calculated by dividing Sales by Wages and salaries.

SALES/WAGES AND SALARIES RATIO(a)(b), Current prices - Original *continued*

	Information media and tele- communications	Financial and insurance services (c)	Rental, hiring and real estate services	Professional, scientific and technical services	Administrative and support services	Arts and recreation services	Other services
2012-13							
December	6.18	1.07	6.69	2.89	2.48	5.30	3.05
March	6.20	0.98	7.03	2.73	2.50	5.29	2.94
June	5.97	1.14	6.71	2.83	2.38	5.31	2.94
2013-14							
September	5.91	1.12	6.80	2.84	2.35	5.46	3.05
December	5.84	1.15	6.72	2.89	2.25	5.31	2.93
March	6.02	1.09	6.60	2.72	2.25	5.31	2.94
June	6.08	1.18	6.47	2.83	2.23	5.17	2.95
2014-15							
September	6.19	1.18	6.53	2.78	2.28	5.47	3.11
December	6.26	1.19	6.42	2.76	2.30	5.44	2.95

(a) Sales refer to Sales of goods and services.

(b) Ratio is calculated by dividing Sales by Wages and salaries.

(c) See paragraph 7 of Explanatory Notes for limited scope and coverage of this industry

BUSINESS GROSS OPERATING PROFITS/SALES RATIO(a)(b), Current prices - Original

	Mining	Manufacturing	Electricity, gas, water and waste services	Construction	Wholesale trade	Retail trade	Accommodation and food services	Transport, postal and warehousing
2012-13								
December	0.34	0.08	0.17	0.09	0.05	0.08	0.13	0.20
March	0.38	0.07	0.17	0.09	0.05	0.05	0.10	0.17
June	0.39	0.07	0.18	0.10	0.05	0.06	0.09	0.17
2013-14								
September	0.42	0.09	0.22	0.08	0.05	0.06	0.11	0.17
December	0.40	0.08	0.20	0.10	0.05	0.08	0.10	0.18
March	0.41	0.07	0.20	0.08	0.05	0.05	0.11	0.15
June	0.36	0.08	0.21	0.10	0.04	0.05	0.10	0.15
2014-15								
September	0.39	0.09	0.23	0.09	0.05	0.05	0.12	0.15
December	0.35	0.08	0.18	0.09	0.05	0.07	0.12	0.18

(a) Sales refers to Sales of goods and services.

(b) Ratio is calculated by dividing Business gross operating profits by Sales.

BUSINESS GROSS OPERATING PROFITS/SALES RATIO(a)(b), Current prices - Original

continued

	Information media and tele- communications	Financial and insurance services(c)	Rental, hiring and real estate services	Professional, scientific and technical services	Administrative and support services	Arts and recreation services	Other services
2012-13							
December	0.27	0.20	0.44	0.12	0.02	0.16	0.08
March	0.27	0.13	0.45	0.10	0.02	0.12	0.12
June	0.28	0.10	0.41	0.11	0.02	0.11	0.08
2013-14							
September	0.26	0.07	0.44	0.11	0.04	0.18	0.13
December	0.29	0.04	0.43	0.11	0.03	0.16	0.09
March	0.28	0.08	0.43	0.09	0.05	0.18	0.13
June	0.29	0.10	0.42	0.09	0.03	0.09	0.05
2014-15							
September	0.25	0.12	0.41	0.10	0.06	0.17	0.12
December	0.26	0.06	0.42	0.10	0.05	0.20	0.06

(a) Sales refers to Sales of goods and services.

(c) See paragraph 7 of Explanatory Notes for limited scope and coverage of this industry

(b) Ratio is calculated by dividing Business gross operating profits by Sales.

INVENTORIES/SALES RATIO(a)(b), Current prices - Original

	<i>Mining</i>	<i>Manufacturing</i>	<i>Electricity, gas, water and waste services</i>	<i>Wholesale trade</i>	<i>Retail trade</i>	<i>Accommodation and food services</i>
2012-13						
December	0.32	0.50	0.05	0.45	0.36	0.06
March	0.35	0.58	0.06	0.47	0.40	0.06
June	0.32	0.54	0.05	0.45	0.38	0.06
2013-14						
September	0.32	0.52	0.05	0.46	0.40	0.06
December	0.30	0.50	0.06	0.46	0.35	0.06
March	0.31	0.55	0.07	0.48	0.39	0.07
June	0.30	0.52	0.06	0.45	0.37	0.07
2014-15						
September	0.32	0.51	0.06	0.47	0.39	0.07
December	0.28	0.48	0.07	0.47	0.36	0.08

(a) Sales refers to Sales of goods and services.

(b) Ratio is calculated by dividing Inventories by Sales.

WHAT IF...? REVISIONS TO TREND ESTIMATES

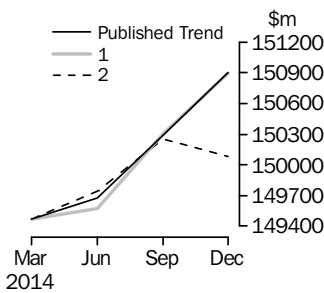
EFFECT OF NEW SEASONALLY ADJUSTED ESTIMATES ON TREND ESTIMATES

TREND REVISIONS

The most recent seasonally adjusted and trend estimates are likely to be revised when original estimates for subsequent quarters become available. To assess reliability of the trend estimate at the current end, the 'what-if' chart presents trend estimates under different scenarios for the next quarter. The approximate effect of two possible scenarios on the current and previous trend estimates for total company gross operating profits and total inventories are presented below.

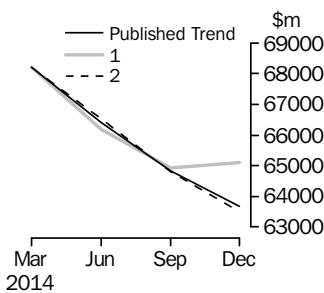
1. Next quarter's seasonally adjusted estimate of total inventories, and seasonally adjusted estimate for company gross operating profits respectively, are higher than the current quarter's estimate by the percentage shown.
2. Next quarter's seasonally adjusted estimate of total inventories, and seasonally adjusted estimate for company gross operating profits respectively, are lower than the current quarter's estimate by the percentage shown.

INVENTORIES (CHAIN VOLUME MEASURES)



	Trend as published		WHAT IF NEXT QUARTER'S SEASONALLY ADJUSTED ESTIMATE:			
	\$m	%	rises by 1.0% on this quarter (1)		falls by 1.0% on this quarter (2)	
	\$m	%	\$m	%	\$m	%
2014						
March	149 466	-0.6	149 466	-0.6	149 466	-0.6
June	149 677	0.1	149 574	0.1	149 743	0.2
September	150 288	0.4	150 308	0.5	150 251	0.3
December	150 903	0.4	150 897	0.4	150 083	-0.1

COMPANY GROSS OPERATING PROFITS (CURRENT PRICES)



	Trend as published		WHAT IF NEXT QUARTER'S SEASONALLY ADJUSTED ESTIMATE:			
	\$m	%	rises by 4.2% on this quarter (1)		falls by 4.2% on this quarter (2)	
	\$m	%	\$m	%	\$m	%
2014						
March	68 202	-0.7	68 202	-0.7	68 202	-0.7
June	66 410	-2.6	66 191	-2.9	66 524	-2.5
September	64 826	-2.4	64 921	-1.9	64 805	-2.6
December	63 670	-1.8	65 113	0.3	63 509	-2.0

EXPLANATORY NOTES

INTRODUCTION

1 This publication contains estimates of sales of goods and services, wages and salaries (from the December quarter 2001 issue), company profits, and the book value of inventories for selected industries in Australia. The series have been compiled from data collected by the Australian Bureau of Statistics (ABS) in its Quarterly Business Indicators Survey. The survey, which was fully implemented in the March quarter 2001, collects data from private sector businesses.

SCOPE AND COVERAGE

2 The Quarterly Business Indicators Survey, like most ABS economic collections, takes its frame from Employing and Non-Employing Units on the ABS Business Register which is primarily based on ABN registrations to the Australian Business Register, which is managed by the Australian Taxation Office (ATO). The frame is updated quarterly to take account of new businesses and changes in the characteristics of businesses, such as industry and size.

3 Businesses are removed from the frame when their ABN has been cancelled by the ATO. This may occur when the business requests for its ABN to be cancelled or otherwise does not remit either Income Tax Withholding, or Goods and Services Tax, for the previous five quarters.

4 The statistics in this publication exclude micro non-employed businesses. Though there are a substantial number of these businesses, it is expected that they would not contribute significantly to the estimates, although the impact would vary from industry to industry.

5 Inventories data are not collected from businesses with fewer than 20 employees, as smaller businesses generally have difficulty in providing accurate quarterly information on the level of their inventories. Estimates for these businesses are derived by applying sales information to an estimated inventories to sales ratio.

6 Profits data are not collected from employing businesses with less than 20 employees. Estimates for these businesses are derived by applying sales information to an estimated profits to sales ratio.

7 The industries and the data items collected, classified according to the Australian and New Zealand Standard Industrial Classification (ANZSIC), 2006 (cat. no. 1292.0), included in this publication are:

EXPLANATORY NOTES *continued*

SCOPE AND COVERAGE

continued

<i>Industries</i>	<i>Sales of goods and services</i>	<i>Wages and salaries</i>	<i>Profits</i>	<i>Inventories</i>
Mining (Division B)	Y	Y	Y	Y
Manufacturing (Division C)	Y	Y	Y	Y
Electricity, Gas, Water and Waste Services (Division D)				
Electricity Supply (26)	Y	Y	Y	Y
Gas Supply (27)	Y	Y	Y	Y
Water Supply, Sewerage and Drainage Services (28)	Y	Y	Y	N
Waste Collection, Treatment and Disposal Services (29)	Y	Y	Y	N
Construction (Division E)	Y	Y	Y	N
Wholesale Trade (Division F)	Y	Y	Y	Y
Retail Trade (Division G)	Y	Y	Y	Y
Accommodation and Foods Services (Division H)	Y	Y	Y	Y
Transport, Postal and Warehousing (Division I)	Y	Y	Y	N
Information Media and Telecommunications (Division J)	Y	Y	Y	N
Finance and Insurance Services (Div. K)				
Depository Financial Intermediation (622)	N	Y	N	N
Non-Depository Financing (623)	Y	Y	Y	N
Financial Asset Investing (624)	Y	Y	Y	N
Insurance and Super. Funds (63)	N	Y	N	N
Auxiliary Finance and Insurance Services (64)	Y	Y	Y	N
Rental, Hiring and Real Estate Services (Division L)	Y	Y	Y	N
Professional, Scientific and Technical Services (Division M)	Y	Y	Y	N
Administrative and Support Services (Division N)	Y	Y	Y	N
Education and Training (Division P)	N	Y	N	N
Health Care and Social Assistance (Division Q)	N	Y	N	N
Arts and Recreational Services (Division R)	Y	Y	Y	N
Other Services (Division S)	Y	Y	Y	N

STATISTICAL UNIT

8 In the Quarterly Business Indicators Survey the statistical unit used to represent businesses, and for which statistics are reported, is the Australian Business Number (ABN) unit, in most cases. The ABN unit is the business unit which has registered for an ABN, and thus appears on the ATO administered Australian Business Register. This unit is suitable for ABS statistical needs when the business is simple in structure.

9 For more significant and diverse businesses where the ABN unit is not suitable for ABS statistical needs, the statistical unit used is the Type of Activity Unit (TAU). A TAU is comprised of one or more business entities, sub-entities or branches of a business entity within an Enterprise Group that can report production and employment data for similar economic activities. When a minimum set of data items is available, a TAU is created which covers all the operations within an industry subdivision (and the TAU is classified to the relevant subdivision of the Australian and New Zealand Standard Industrial Classification (ANZSIC)). Where a business cannot supply adequate data for each industry, a TAU is formed which contains activity in more than one industry subdivision and the TAU is classified to the predominant ANZSIC subdivision. The businesses that contribute to the statistics in this publication are classified:

- by institutional sector, in accordance with the Standard Institutional Sector Classification of Australia (SISCA), which is detailed in Standard Economic Sector Classifications of Australia (SESCA) (cat. no. 1218.0)
- by industry, in accordance with the Australian and New Zealand Standard Industrial Classification (ANZSIC), 2006 (cat. no. 1292.0), 2006 (cat.no.1292.0)

EXPLANATORY NOTES *continued*

CLASSIFICATIONS

10 The Australian and New Zealand Standard Industrial Classification has been developed for use in both countries for the production and analysis of industry statistics. For more information, users are referred to Australian and New Zealand Standard Industrial Classification (ANZSIC), 2006 (cat. no. 1292.0).

11 In order to classify data by industry, each statistical unit (as defined above) is classified to the Australian and New Zealand Standard Industrial Classification industry in which it mainly operates.

SURVEY METHODOLOGY

12 The survey is conducted by mail on a quarterly basis. It is based on a random sample of approximately 16,000 units which is stratified by industry, state/territory and number of employees. All private sector units with over 300 employees, and other statistically significant units, such as joint venture partners, are included in the sample.

13 Respondents are asked to provide data on the same basis as their own management accounts. Where a selected unit does not respond in a given survey period, a value is estimated. If data are subsequently provided, the estimated value is replaced with the reported data. Aggregates are calculated from all data using the 'number raised' estimation technique. Data are edited at both individual unit level and aggregate level.

TIMING OF SURVEY CYCLE

14 Surveys are conducted in respect of each quarter and returns are completed during the eight or nine week period after the end of the quarter to which survey data relate e.g. December quarter survey returns are completed during January and February.

SAMPLE REVISION

15 The survey frames and samples are revised each quarter to ensure that they remain representative of the survey population. The timing for creating each quarter's survey frame is consistent with that of other ABS business surveys. This provides for greater consistency when comparing data across surveys.

16 Additionally, with these revisions to the sample, some of the units from the sampled sector are rotated out of the survey and are replaced by others, to spread the reporting workload equitably.

SEASONAL ADJUSTMENT

17 The quarterly original estimates in this publication are affected in varying degrees by seasonal influences. The seasonal adjustment process estimates and removes the effects of normal seasonal variations from the original estimates so that the effects of other influences can be more clearly recognised.

18 In the seasonal adjustment process, account has been taken of normal seasonal factors (e.g. increase in retail sales due to the Christmas period) to produce the seasonally adjusted estimates. Particular care should be taken in interpreting quarterly movements in the seasonally adjusted estimates because seasonal adjustment does not remove the effect of irregular or non-seasonal influences (e.g. change in interest rates) and reflects the sampling and other errors to which the original estimates are subject.

19 In this publication, the seasonally adjusted estimates are produced by the concurrent seasonal adjustment method which takes account of the latest available original estimates. This method improves the estimation of seasonal factors, and therefore, the seasonally adjusted and trend estimates for the current and previous quarters. As a result of this improvement, revisions to the seasonally adjusted and trend estimates will be observed for recent periods. A more detailed review is conducted annually prior to the September quarter release using data up to and including the June quarter.

20 The revision properties of the seasonally adjusted and trend estimates can be improved by the use of autoregressive integrated moving average (ARIMA) modelling. ARIMA modelling relies on the characteristics of the series being analysed to project future period data. The projected values are temporary, intermediate values, that are only used internally to improve the estimation of the seasonal factors. The projected data

EXPLANATORY NOTES *continued*

SEASONAL ADJUSTMENT

continued

do not affect the original estimates and are discarded at the end of the seasonal adjustment process. The Quarterly Business Indicators Survey uses ARIMA modelling where appropriate for individual time series. The ARIMA model is assessed as part of the annual reanalysis and following the 2013 annual reanalysis, 40% of the Quarterly Business Indicators Survey eligible series use an ARIMA model. For more information on the details of ARIMA modelling see **Feature article: Use of ARIMA modelling to reduce revisions** in the October 2004 issue of **Australian Economic Indicators (cat. no. 1350.0)**.

TREND ESTIMATES

21 The trend estimates are derived by applying a 7-term Henderson moving average to the seasonally adjusted estimates. The 7-term Henderson moving average is symmetric, but as the end of a time series is approached, asymmetric forms of the moving average are applied. The asymmetric moving average has been tailored to suit the particular characteristics of individual series and enable trend estimates for recent quarters to be produced. Estimates of the trend will be improved at the current end of the time series as additional observations become available. This improvement is due to the combined effect of the concurrent seasonal adjustment methodology and the application of different asymmetric moving averages for the most recent three quarters. As a result of the improvement, revisions to the trend estimates will generally be observed for the most recent three quarters. ABS research shows that about 75% of the total revision to the trend estimate at the current end is due to the use of different asymmetric moving averages when the original estimate is available for the next quarter.

22 There may also be revisions because of changes in the original estimates. As a result of these revisions, the seasonally adjusted and trend estimates will also be revised. For further information, see Information Paper: A Guide to Interpreting Time Series — Monitoring Trends (cat. no. 1349.0) or contact the Assistant Director, Time Series Analysis on Canberra (02) 6252 6345 or email <time.series.analysis@abs.gov.au>.

CHAIN VOLUME MEASURES

23 The chain volume measures appearing in this publication are annually reweighted chain Laspeyres indexes referenced to current price values in the chosen reference year (currently 2011-12). The current price values may be thought of as being the product of a price and quantity. The value in chain volume terms can be derived by linking together movements in volumes, calculated using the average prices of the previous financial year and applying compound movements to the current price estimates of the reference year. Each year's quarter-to-quarter growth rates in the chain volume series are based on the prices of the previous financial year, except for those quarters of the latest incomplete year which are based upon the second most recent financial year. Quarterly chain volume estimates are benchmarked to annual chain volume estimates, so that the quarterly estimates for a financial year sum to the corresponding annual estimate.

24 With each release of the September quarter issue of this publication, a new base year is introduced and the reference year is advanced one year to coincide with it. This means that with the release of the September quarter 2014 issue of this publication, the chain volume measures for 2013-14 will have 2012-13 (the previous financial year) as their base year rather than 2011-12, and the reference year is 2012-13. A change in the reference year changes levels but not growth rates for all periods. A change in the base year can result in revisions, small in most cases, to growth rates for the last year.

25 Chain volume measures are not generally additive. In other words, component chain volume measures do not, in general, sum to a total in the way original current price components do. For inventories and sales data, this means that the chain volume estimates for industry groups will not add to the total for Australia. In order to minimise the impact of this, the ABS uses the latest base year as the reference year. By adopting this approach, additivity does exist for the quarters following the reference year and non-additivity is relatively small for the quarters in the reference year and those

EXPLANATORY NOTES *continued*

CHAIN VOLUME MEASURES

continued

immediately preceding it. For further information on chain volume measures, refer to the Information Paper: Introduction of Chain Volume Measures in the Australian National Accounts (cat. no. 5248.0).

COMPARABILITY WITH NATIONAL ACCOUNTS AND OTHER ABS ESTIMATES

26 The data collected in the Quarterly Business Indicators Survey are used in the compilation of the quarterly estimates of the Australian National Accounts. Inventories data are used to compile estimates of the increase in book value of non-farm inventories. Estimates of sales of goods and services are used to help derive quarterly chain volume measures of gross value added for selected industries. Company gross operating profits data are used to compile estimates of gross operating surplus of private non-financial corporations. From March quarter 2002, estimates of wages and salaries are being used to compile estimates for compensation of private sector employees. For further details see Australian National Accounts: Concepts, Sources and Methods (cat. no. 5216.0).

27 However the statistics in this publication will differ from corresponding statistics in the quarterly Australian National Accounts for the following reasons:

- The national accounts estimates are benchmarked to annual supply and use tables which are based on annual Economy Wide Survey and taxation data.
- The national accounts estimates include estimates for businesses classified to industries not in scope of the Quarterly Business Indicators Survey.
- The national accounts estimates for gross operating surplus of private non-financial corporations are after deduction of the inventory valuation adjustment which measures the portion of income attributable to holding gains or losses resulting from inventory valuation practices.
- In many cases, the processes used to seasonally adjust national accounts estimates are different to those used for the seasonally adjusted estimates in this publication.

28 The estimates for sales of goods and services by Retail trade in this publication will differ from turnover estimates included in Retail Trade, Australia (cat. no. 8501.0). The latter publication presents monthly estimates of the value of turnover of retail businesses, and is sourced from the Retail Business Survey. Estimates for sales of goods and services in this publication exclude the Goods and Services Tax, while turnover collected in the Retail Business Survey includes the Goods and Services Tax. In addition, the Retail Business Survey includes some businesses classified to ANZSIC divisions other than the Retail trade division, and includes retail establishments associated with management units that are not classified to the Retail trade division. The use of different samples in the Retail Business Survey and Quarterly Business Indicators Survey will also contribute to differences.

AUSTRALIAN INTERNATIONAL FINANCIAL REPORTING STANDARDS

29 The new Australian equivalents to International Financial Reporting Standards (AIFRS) began to be progressively implemented in Australia from 1 January 2005. As a result, a number of items in the financial accounts of Australian businesses have been affected by changed definitions which have in turn impacted upon both Income Statements and Balance Sheets. A range of ABS economic collections source data from financial accounts of businesses and use those data to derive economic statistics. There have been no changes in the associated economic definitions.

30 After monitoring data items since March quarter 2005 it has been concluded that most affected published data series have been impacted by data breaks, but that the magnitude of such breaks cannot be determined without imposing disproportionate load upon data providers to ABS surveys and other administratively collected data. ABS will continue to monitor developments and report any significant identified impacts or changes in methodology as a result of AIFRS.

EXPLANATORY NOTES *continued*

GENERAL ACKNOWLEDGMENT

31 ABS publications draw extensively on information provided freely by individuals, businesses, governments and other organisations. Their continued cooperation is very much appreciated; without it, the wide range of statistics published by the ABS would not be available. Information received by the ABS is treated in strict confidence as required by the *Census and Statistics Act 1905*.

RELATED PUBLICATIONS

32 Users may also wish to refer to the following publications:

- Australian National Accounts: Concepts, Sources and Methods (cat. no. 5216.0)
- Australian National Accounts: National Income, Expenditure and Product (cat. no. 5206.0)
- Australian Industry (cat. no. 8155.0)
- Information Paper: Introduction of Chain Volume Measures in the Australian National Accounts (cat. no. 5248.0)
- Information Paper: Improvements to Australian Bureau of Statistics Quarterly Business Indicators (cat. no. 5677.0)
- Manufacturing Production, Australia (cat. no. 8301.0)
- Private New Capital Expenditure and Expected Expenditure, Australia (cat. no. 5625.0)
- Retail Trade, Australia (cat. no. 8501.0)

ABS WEB SITE

33 Information on the Quarterly Business Indicators Survey and survey outputs are published on this web site: see the Topics @ a Glance pages.

DATA AVAILABLE ON REQUEST

34 As well as the statistics included in this and related publications, the ABS may have other relevant data available on request. These series include more detailed industry data (e.g. Manufacturing subdivision), and wages and salaries by state/territory by industry. The availability of more detailed data are subject to confidentiality and quality checks. Inquiries should be made to the National Information and Referral Service on 1300 135 070.

TECHNICAL NOTE DATA QUALITY

RELIABILITY OF THE ESTIMATES

1 Estimates provided in this publication are subject to non-sampling and sampling error. The most common way of quantifying sampling error is to calculate the standard error for the published estimate. This is discussed in paragraphs 6 to 9 below.

2 Estimates that have an estimated relative standard error between 10% and 25% are annotated with the symbol '^'. These estimates should be used with caution as they are subject to sampling variability too high for some purposes. Estimates with an RSE between 25% and 50% are annotated with the symbol '*', indicating that the estimate should be used with caution as it is subject to sampling variability too high for most practical purposes. Estimates with an RSE greater than 50% are annotated with the symbol '**' indicating that the sampling variability causes the estimates to be considered too unreliable for general use. These annotations have only been applied to estimates from the March quarter 2009.

3 Non-sampling errors may arise as a result of errors in the reporting, recording or processing of the data and can occur even if there is a complete enumeration of the population. These errors can be introduced through inadequacies in the questionnaire, treatment of non-response, inaccurate reporting by respondents, errors in the application of survey procedures, incorrect recording of answers, and errors in data entry and processing. Inventories data for businesses with less than 20 employees are derived and could therefore be subject to error (although this error is estimated to be less than the sampling and non-sampling error resulting from directly collecting these data).

4 Estimates for the latest quarter presented in this publication are considered preliminary and revised estimates will be released with the next issue. As discussed in paragraphs 20 and 21 of the Explanatory Notes, seasonally adjusted and trend estimates are also subject to revision as more data are revised and more data becomes available.

5 It is difficult to measure the size of non-sampling errors. However, every effort is made in the design of the survey and development of survey procedures to minimise their effects.

STANDARD ERRORS

6 The estimates in this publication are based on a sample drawn from units in the surveyed population. Because the entire population is not surveyed, the published estimates are subject to sampling error. In calculating the standard error for the statistics in this publication, the ABS would prefer to produce a smoothed standard error for the major published aggregates as this approach takes account of the variability in standard error estimates for quarterly statistics. This estimated standard error would then be used as an indication of the sampling error for the current published series. Standard errors are based upon the data in the currently published quarter. Details of standard errors are available below.

TECHNICAL NOTE DATA QUALITY *continued*

LEVEL ESTIMATES

7 To illustrate, let us say that the published level estimate for company profits before income tax is \$8,900m and the calculated standard error in this case is \$200m. The standard error is then used to interpret the level estimate of \$8,900m. For instance, the standard error of \$200m indicates that:

- There are approximately two chances in three that the real value falls within the range \$8,700m to \$9,100m ($\$8,900\text{m} \pm \200m).
- There are approximately nineteen chances in twenty that the real value falls within the ranges \$8,500m and \$9,300m ($\$8,900\text{m} \pm \400m).
- The true value in this case is the result we would obtain if we could enumerate the total population.

8 The following table shows the standard errors for national and state quarterly level estimates based upon the data in the current quarter.

	<i>Company gross operating profits</i>	<i>Company profits before income tax</i>	<i>Sales of goods and services</i>	<i>Inventories</i>	<i>Wages and salaries</i>
	\$m	\$m	\$m	\$m	\$m
Mining	99	88	378	109	52
Manufacturing	183	172	1 548	920	226
Electricity, gas, water and waste services	58	52	212	39	23
Construction	335	335	3 111	na	535
Wholesale trade	270	264	2 461	1 246	175
Retail trade	160	158	1 918	835	189
Accommodation and food services	121	106	886	86	214
Transport, postal and warehousing	109	98	756	na	164
Information media and telecommunications	57	54	335	na	64
Financial and insurance services	168	217	662	na	221
Rental, hiring and real estate services	221	235	678	na	121
Professional, scientific and technical services	355	353	1 609	na	529
Administrative and support services	116	115	927	na	361
Education and Training	na	na	na	na	135
Health Care and Social Assistance	na	na	na	na	397
Arts and recreation services	52	51	183	na	52
Other services	190	95	787	na	252
Total	726	725	5 044	1 766	1 140
New South Wales	na	na	2 572	na	607
Victoria	na	na	2 845	na	453
Queensland	na	na	2 188	na	549
South Australia	na	na	1 307	na	311
Western Australia	na	na	1 754	na	432
Tasmania	na	na	325	na	96
Northern Territory	na	na	334	na	94
Australian Capital Territory	na	na	329	na	103
Australia	726	725	5 044	1 766	1 140

na not available

TECHNICAL NOTE DATA QUALITY *continued*

MOVEMENT ESTIMATES

9 The following example illustrates how to use the standard error to interpret a movement estimate. Let us say that one quarter the published level estimate for inventories is \$90,000m, and the next quarter the published level estimate is \$92,000m. In this example the calculated standard error for the movement estimate is \$850m. The standard error is then used to interpret the published movement estimate of +\$2,000m. For instance, the standard error of \$850m indicates that:

- There are approximately two chances in three that the real movement over the two quarter period falls within the range \$1,150m to \$2,850m ($\$2,000m \pm \$850m$).
- There are approximately nineteen chances in twenty that the real movement falls within the range \$300m to \$3,700m ($\$2,000m \pm \$1,700m$).

10 The following table shows the standard errors for national quarterly movement estimates based upon the data in the current quarter.

	<i>Company gross operating profits</i>	<i>Company profits before income tax</i>	<i>Sales of goods and services</i>	<i>Inventories</i>	<i>Wages and salaries</i>
	\$m	\$m	\$m	\$m	\$m
Mining	99	116	287	64	66
Manufacturing	181	175	726	404	106
Electricity, gas, water and waste services	57	57	88	18	18
Construction	341	344	2 123	na	341
Wholesale trade	227	216	1 299	669	113
Retail trade	153	155	785	351	78
Accommodation and food services	86	84	547	54	143
Transport, postal and warehousing	113	113	594	na	84
Information media and telecommunications	61	57	177	na	38
Financial and insurance services	143	252	280	na	101
Rental, hiring and real estate services	116	133	367	na	72
Professional, scientific and technical services	267	292	996	na	283
Administrative and support services	88	87	539	na	167
Education and Training	na	na	na	na	80
Health Care and Social Assistance	na	na	na	na	208
Arts and recreation services	48	47	151	na	24
Other services	77	80	444	na	94
Total	702	709	3 187	904	619

na not available

ADJUSTMENTS TO ESTIMATES

11 Adjustments are included in the estimates to allow for lags in processing new businesses to the Australian Business Register. The following table shows the adjustments made to the current quarter's original estimates in current price terms:

	<i>December Quarter 2014</i>
	%
Company gross operating profits	1.0
Company profits before income tax	1.0
Sales of goods and services	1.4
Inventories	0.8
Wages and salaries	1.7

TECHNICAL NOTE DATA QUALITY *continued*

ADJUSTMENTS TO ESTIMATES

continued

12 As previously discussed, the estimates presented in this publication are partial indicators used in the compilation of the quarterly national accounts. The movements in the Business Indicators estimates will not always be the same as the movements in the comparable national accounts series but they should be reasonably consistent after taking account of differences in concepts, scope and methodology described in paragraph 26 of the Explanatory Notes. If after taking account of these differences, there are concerns about data quality and coherence, the national accounts area provides feedback to the survey area. This process may result in adjustments being applied to the Business Indicators estimates prior to release in this publication. The objective use of the national accounts framework to provide data coherence across all ABS economic statistics ensures that a common understanding of recent economic developments is presented.

SALES OF GOODS AND SERVICES TIME SERIES

13 This publication includes estimates of sales of goods and services, by industry, and by state/territory, but estimates of national total sales of goods and services are not published. Total sales of goods and services is not an adequate indicator of the performance of the Australian economy as it includes duplication; for example, goods sold by retailers may also be included in goods sold by wholesalers in the same period. However this publication does include total sales of goods and services, by state/territory, as it is considered that there may be interest in this item as a measure of relative activity. This data should be used with caution given the potential for the data to include duplication across industries.

PROFITS TIME SERIES

14 Estimates of gross operating profits are compiled by deducting estimates of items that do not involve the production of goods and services from estimates of profits before income tax. These items include: depreciation, net interest paid, net foreign exchange gains/losses and unrealised gains/losses on the revaluation of assets. These items are considered out of scope of the national accounts item gross operating surplus.

15 As indicated in paragraph 6 of the Explanatory Notes, income items (other than sales of goods and services), expense items (other than labour costs) and profits are only collected for businesses employing 20 or more persons in the Quarterly Business Indicators Survey (QBIS).

WAGES TIME SERIES

16 The Introduction of the Quarterly Business Indicators Survey from March quarter 2001 included the collection of private sector wages and salaries by industry.

PRIVATISED MARKETING AUTHORITIES

17 Three significant privatised marketing authorities came into scope of the estimates in this publication from the September quarter 1999. The introduction of these units resulted in a break in series for estimates for inventories and sales of goods and services between the June and September quarters 1999 and comparison of the series over time should be undertaken with care.

18 The methodology used by the ABS has ensured that the trend series has not been distorted by the introduction of these units, although there is a trend break evident between the June and September quarters 1999. For this reason, the trend estimates of movement have not been released for the Wholesale trade inventories, Total inventories and Wholesale trade sales series in respect of the September quarter 1999.

PRIVATISATION OF TELSTRA CORPORATION

19 Telstra Corporation was effectively privatised on 20 November 2006. For the purposes of ABS statistics this change from public sector to private sector was effective from March quarter 2007. This has impacted on some data series presented in this publication, particularly the March quarter 2007 movements. The data items affected are sales of goods and services, wages and salaries, company gross operating profits and the related profits series in the Manufacturing and Information media and telecommunications industry. The introduction of Telstra has resulted in a break in series for some series in this publication between the December quarter 2006 and March quarter 2007. The movement trend estimates, in percentage terms, have therefore not been released for the March quarter 2007.

TREND BREAK

20 In the June quarter 2010 release, trend break corrections were applied to Mining and Total company gross operating profits, company profits before income tax, business gross operating profits and Mining sales. These corrections were necessary due to very large mining commodity contract price rises that occurred on 1st April 2010. Trend break corrections were also applied to Manufacturing and Western Australian Sales of goods and services due to the movement of a major manufacturing business from the private to public sector. When a trend break occurs in a time series it is important that the trend movement estimate be treated with caution, hence the suppression of the quarterly and annual movement estimates for June 2010.

GLOSSARY

A company	The definition of company has been expanded to include quasi-corporations as well as incorporated private sector business enterprises. For the purpose of the survey, branches of overseas companies operating in Australia are included but overseas branches of Australian companies are excluded.
Business gross operating profit	The sum of unincorporated gross operating profit and company gross operating profit.
Company gross operating profits	Selected items are excluded from company profits before income tax to provide a measure of underlying company profits. These items include interest income and expenses; depreciation and amortisation; and selected items which do not involve the production of goods and services such as net foreign exchange gains/losses, gains/losses arising from the sale of non-current assets, and net unrealised gains/losses from the revaluation of current or non-current assets.
Company profits before income tax	Net operating profit or loss before income tax and extraordinary items and is net of capital profits or losses arising from the sale of businesses' own capital goods and dividends received.
Inventories	All inventories of materials etc., work in progress and finished goods owned by the business, whether held at locations of the business or elsewhere. Inventories are recorded at book value at the end of the quarter.
Quasi-corporations	Large and easily identified unincorporated enterprises such as partnerships of companies or unit trusts of companies.
Sales of goods and services	This item includes sales of goods by the business and income from services provided such as commission income, repair and service income and fees, management fees, rent leasing and hiring income, delivery and installation charges, income from consulting services, sponsorship income, membership/subscription fees and royalties income. State/territory income from sales of goods and services is reported by businesses for the sales of goods and services from each state/territory in which the business operates.
Unincorporated businesses	Businesses not in the corporate sector as defined under the glossary term 'a company'.
Unincorporated gross operating profit	Same definition as company gross operating profit except it includes only unincorporated businesses.
Wages and salaries	Gross earnings before taxation and other deductions. Includes provisions for employee entitlements.

FOR MORE INFORMATION . . .

INTERNET **www.abs.gov.au** the ABS website is the best place for data from our publications and information about the ABS.

INFORMATION AND REFERRAL SERVICE

Our consultants can help you access the full range of information published by the ABS that is available free of charge from our website. Information tailored to your needs can also be requested as a 'user pays' service. Specialists are on hand to help you with analytical or methodological advice.

PHONE 1300 135 070

EMAIL client.services@abs.gov.au

FAX 1300 135 211

POST Client Services, ABS, GPO Box 796, Sydney NSW 2001

FREE ACCESS TO STATISTICS

All statistics on the ABS website can be downloaded free of charge.

WEB ADDRESS www.abs.gov.au