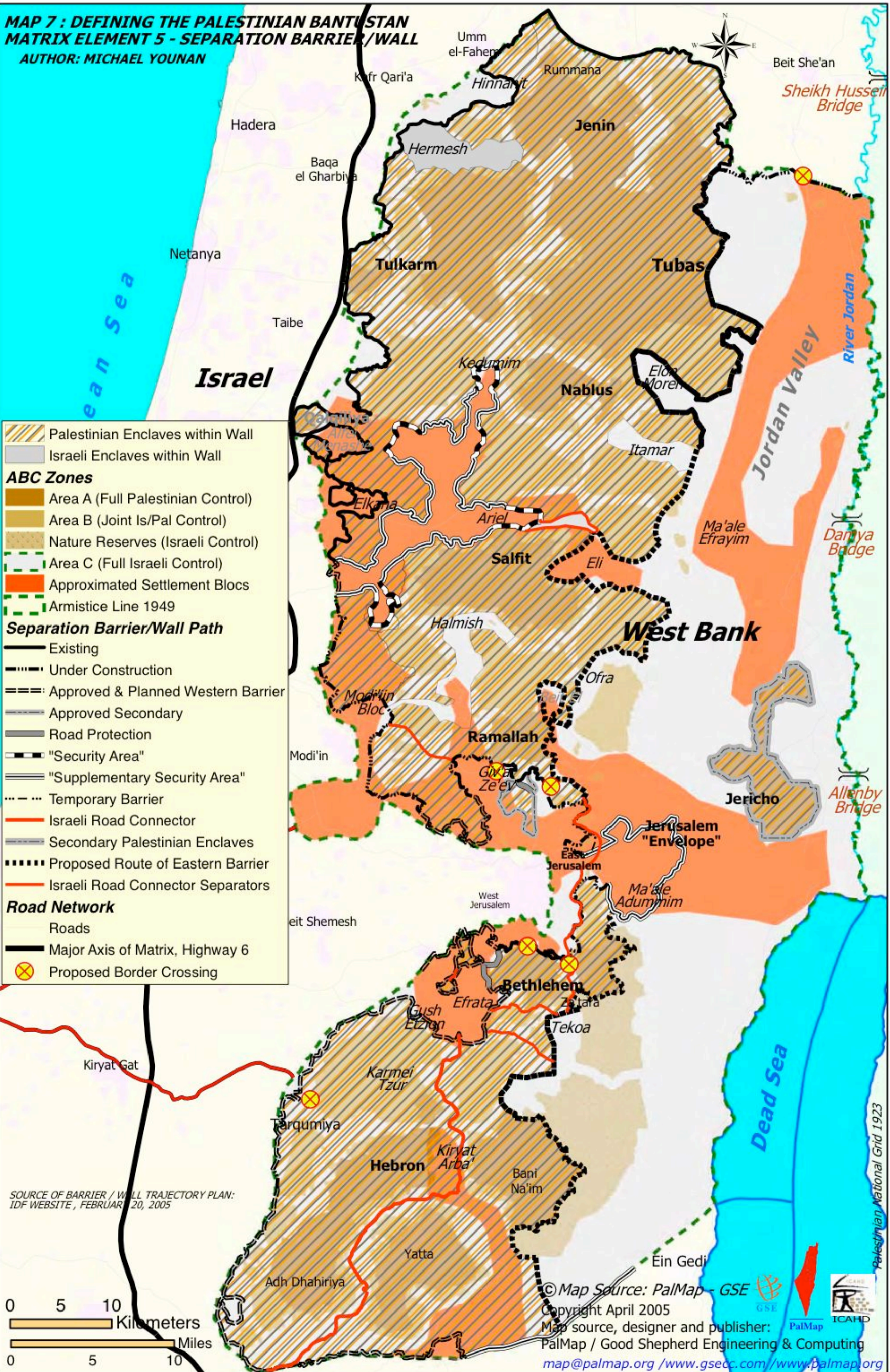


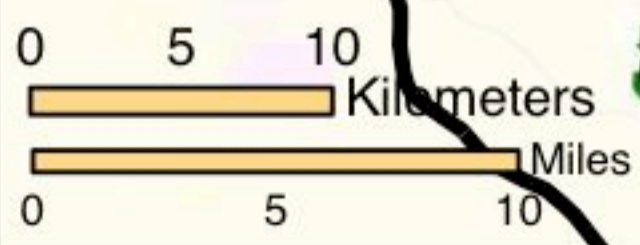
**MAP 7 : DEFINING THE PALESTINIAN BANTUSTAN
MATRIX ELEMENT 5 - SEPARATION BARRIER/WALL**
AUTHOR: MICHAEL YOUNAN

Legend

- Palestinian Enclaves within Wall
- Israeli Enclaves within Wall
- ABC Zones**
 - Area A (Full Palestinian Control)
 - Area B (Joint Is/Pal Control)
 - Nature Reserves (Israeli Control)
 - Area C (Full Israeli Control)
- Approximated Settlement Blocs
- Armistice Line 1949
- Separation Barrier/Wall Path**
 - Existing
 - Under Construction
 - Approved & Planned Western Barrier
 - Approved Secondary
 - Road Protection
 - "Security Area"
 - "Supplementary Security Area"
 - Temporary Barrier
 - Israeli Road Connector
 - Secondary Palestinian Enclaves
 - Proposed Route of Eastern Barrier
 - Israeli Road Connector Separators
- Road Network**
 - Roads
 - Major Axis of Matrix, Highway 6
 - Proposed Border Crossing



SOURCE OF BARRIER / WALL TRAJECTORY PLAN:
IDF WEBSITE, FEBRUARY 20, 2005



© Map Source: PalMap - GSE
Copyright April 2005
Map source, designer and publisher:
PalMap / Good Shepherd Engineering & Computing
map@palmap.org / www.gsec.com / www.palmap.org

Palestinian National Grid 1923